

STATE OF ILLINOIS
DEPARTMENT OF TRANSPORTATION

| ROUTE NO. | SECTION | COUNTY | TOTAL SHEETS | SHEET NO. |
|---------------------|----------------|-----------------------------|--------------|-----------|
| T.R. 380 | 13-10133-00-BR | WHITE | 22 | 1 |
| FED. ROAD DIST. NO. | | ILLINOIS CONTRACT NO. 99644 | | |

INDEX OF SHEETS

| SHEET NO. | DESCRIPTION |
|-----------|-----------------------------------------|
| 1. | COVER SHEET |
| 2. | SUMMARY OF QUANTITIES AND GENERAL NOTES |
| 3. | TYPICAL CROSS SECTIONS |
| 4. | PLAN AND PROFILE |
| 5-11. | BRIDGE PLANS |
| 12-13. | BORINGS |
| 14-22. | STATION CROSS SECTIONS |

HIGHWAY STANDARDS:

| | |
|-----------|-----------------------------------------------------------------------------------------|
| 000001-07 | STANDARD SYMBOLS, ABBREVIATIONS, AND PATTERNS |
| 515001-04 | NAME PLATE FOR BRIDGES |
| 701901-08 | TRAFFIC CONTROL DEVICES |
| 725001-01 | OBJECT AND TERMINAL MARKERS |
| BLR 21-9 | TYPICAL APPLICATION OF TRAFFIC CONTROL DEVICES FOR CONSTRUCTION ON RURAL LOCAL HIGHWAYS |

**PLANS FOR PROPOSED
SURFACE TRANSPORTATION PROGRAM
OFF SYSTEM BRIDGE**

**PROJECT XVWR(269)
SECTION 13-10133-00-BR
PHILLIPS ROAD DISTRICT
WHITE COUNTY
T.R. 380 / 1750 E ROAD
PROPOSED STRUCTURE NO. 097-3295
C-94-509-14**

UTILITIES

CROSSVILLE GAS
107 W. MAIN STREET
CROSSVILLE, IL 62827

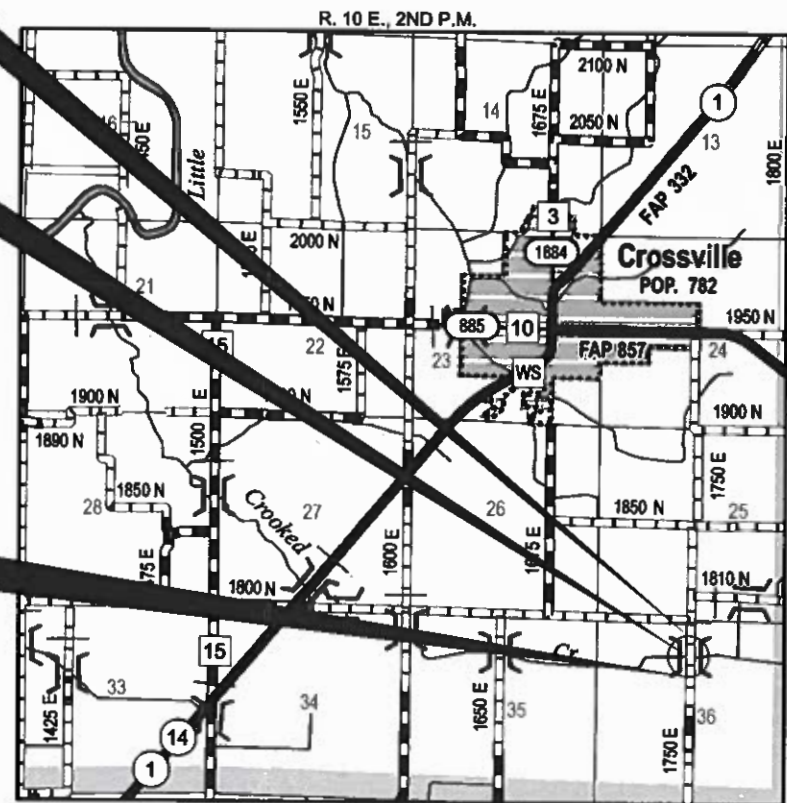
CROSSVILLE TELEPHONE
302 W. MAIN STREET
CROSSVILLE, IL 62827

WAYNE / WHITE ELECTRIC CO-OP
1501 WEST MAIN
FAIRFIELD, IL 62837

STA. 9+98
PRECAST PRESTRESSED CONCRETE DECK BEAM
BRIDGE, SINGLE SPAN AT 60'-0"
24'-0" RDWY.; SKEW = 0°
EXISTING STRUCTURE NO. 097-3139
PROPOSED STRUCTURE NO. 097-3295

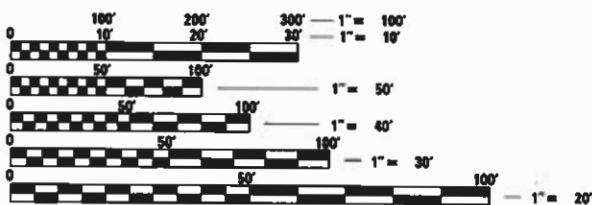
IMPROVEMENT ENDS
STATION 12+10

IMPROVEMENT BEGINS
STATION 7+75



LOCATION MAP

APPROXIMATE SCALE: 0 1/2 MILE
NET LENGTH OF SECTION = 435 FEET = 0.082 MILES



FULL SIZE PLANS HAVE BEEN PREPARED USING STANDARD ENGINEERING SCALES. REDUCED SIZED PLANS WILL NOT CONFORM TO STANDARD SCALES. IN MAKING MEASUREMENTS ON REDUCED PLANS, THE ABOVE SCALES MAY BE USED.

FUNCTIONAL CLASSIFICATION: LOCAL ROAD
DESIGN SPEED: 30 MPH
DESIGN TRAFFIC: 50 ADT

CONTRACT NO. 99644 PRINTED BY THE AUTHORITY OF THE STATE OF ILLINOIS



ILLINOIS DEPARTMENT OF TRANSPORTATION

APPROVED February 13, 2020
Brian Ray
COUNTY ENGINEER

APPROVED 3-9-2020
Dennis Coston
TOWNSHIP COMMISSIONER

PASSED 03/27/2020
Keith Kulets
DISTRICT NINE ENGINEER OF LOCAL ROADS & STREETS

STATE OF ILLINOIS
DEPARTMENT OF TRANSPORTATION



WARNING

CALL 811
BEFORE YOU DIG
DIG NO: X1340892

DATE: 02/10/2020

EXPIRES: 11/30/2021

HAMPTON, LENZINI AND RENWICK, INC.
CIVIL ENGINEERS • STRUCTURAL ENGINEERS • LAND SURVEYORS

3085 STEVENSON DRIVE, SUITE 201
SPRINGFIELD, ILLINOIS 62703
217.546.3400 www.hrengineering.com

184.000659
ILLINOIS PROFESSIONAL DESIGN FIRM LS / PE / SE CORPORATION

PROJECT NUMBER: 17.0694.130 DATE: 02/10/2020

SUMMARY OF QUANTITIES

| CODE NO. | ITEM | CONSTRUCTION TYPE CODE 0010 | |
|------------|-----------------------------------------------------|-----------------------------|----------------|
| | | UNIT | TOTAL QUANTITY |
| 20100110 | TREE REMOVAL (6 TO 15 UNITS DIAMETER) | UNIT | 45 |
| 20200100 | EARTH EXCAVATION | CU YD | 472 |
| 20300100 | CHANNEL EXCAVATION | CU YD | 315 |
| 28100807 | STONE DUMPED RIPRAP, CLASS A4 | TON | 210 |
| 40200800 | AGGREGATE SURFACE COURSE, TYPE B | TON | 588 |
| 50100100 | REMOVAL OF EXISTING STRUCTURES | EACH | 1 |
| 50300225 | CONCRETE STRUCTURES | CU YD | 24.2 |
| 50300280 | CONCRETE ENCASEMENT | CU YD | 2.8 |
| 50400505 | PRECAST PRESTRESSED CONCRETE DECK BEAMS (27" DEPTH) | SQ FT | 1,440 |
| 50800205 | REINFORCEMENT BARS, EPOXY COATED | POUND | 2,990 |
| * 50900205 | STEEL RAILING, TYPE S1 | FOOT | 116 |
| 51201400 | FURNISHING STEEL PILES HP10X42 | FOOT | 360 |
| 51202305 | DRIVING PILES | FOOT | 360 |
| 51500100 | NAME PLATES | EACH | 1 |
| 542D0223 | PIPE CULVERTS, CLASS D, TYPE 1 18" | FOOT | 104 |
| 542D0229 | PIPE CULVERTS, CLASS D, TYPE 1 24" | FOOT | 64 |
| 67100100 | MOBILIZATION | L SUM | 1 |
| * 72501000 | TERMINAL MARKER - DIRECT APPLIED | EACH | 4 |
| ^ X2501000 | SEEDING, CLASS 2 (SPECIAL) | ACRE | 0.3 |

^ SEE SPECIAL PROVISIONS

* SPECIALTY ITEMS

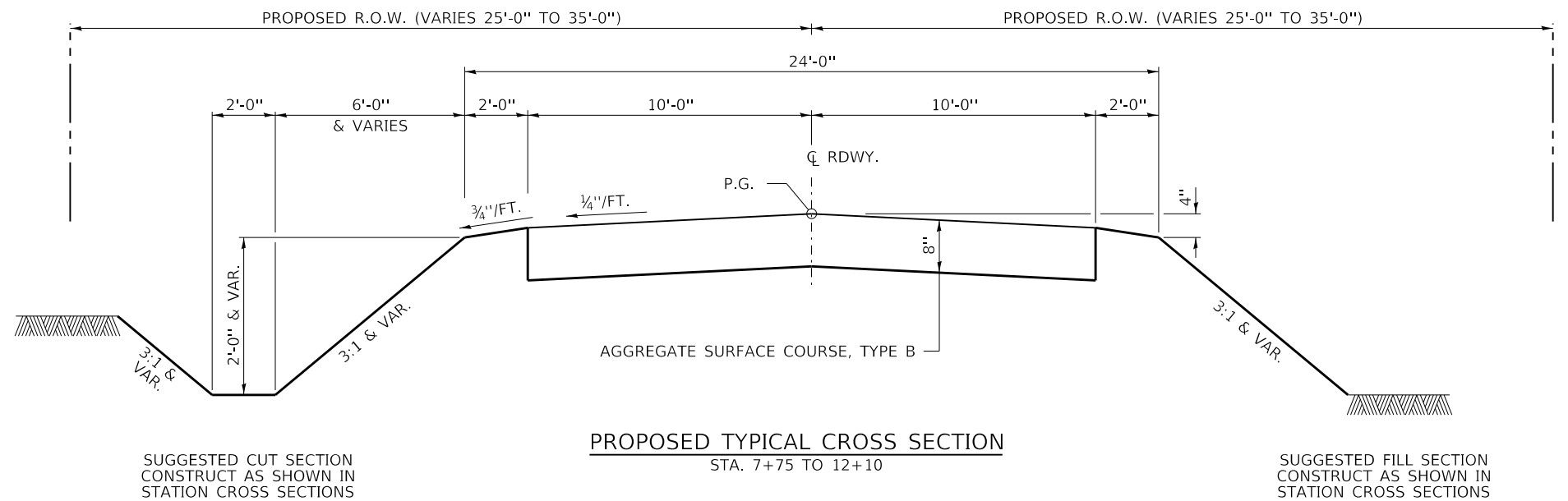
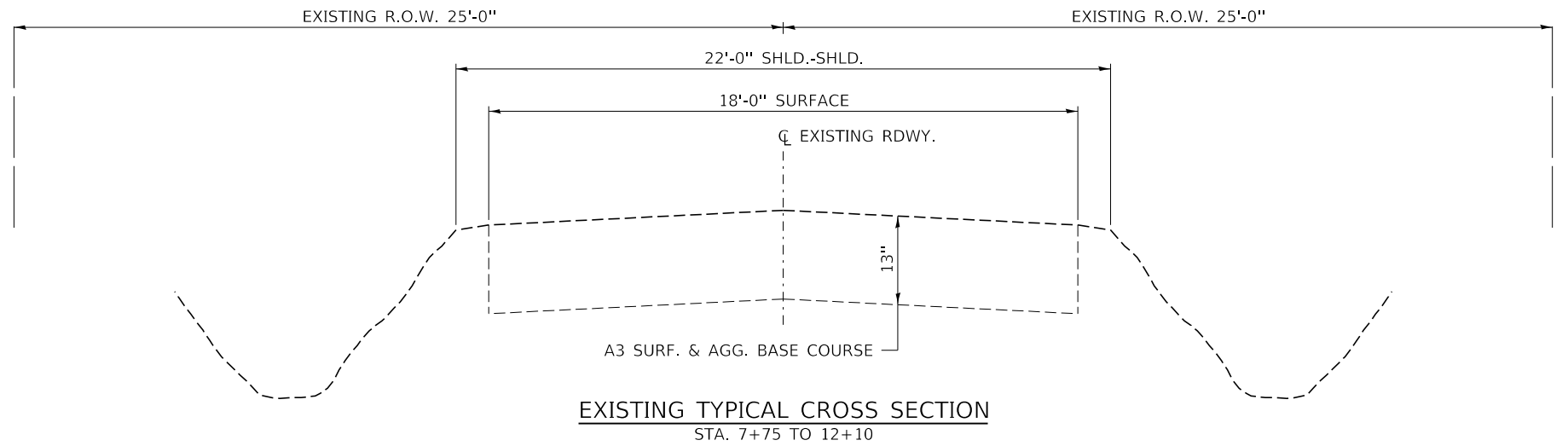
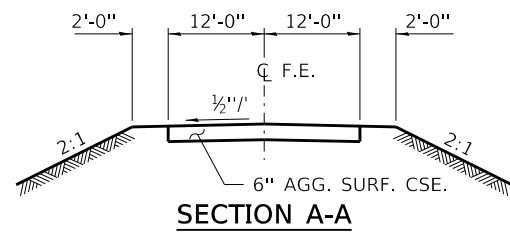
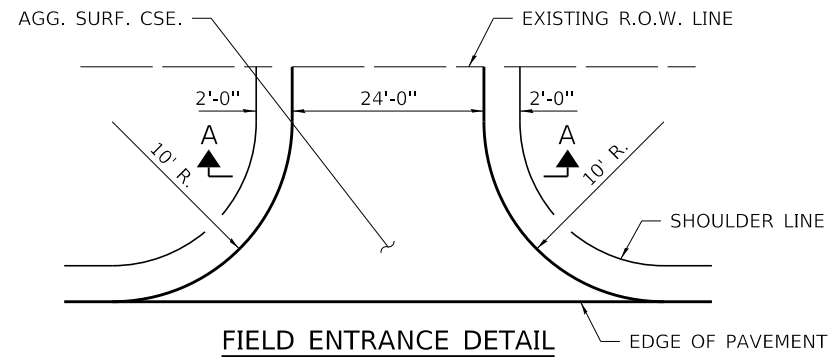
GENERAL NOTES

- 1) ALL CONSTRUCTION SHALL BE DONE IN ACCORDANCE WITH THE STATE OF ILLINOIS "STANDARD SPECIFICATIONS FOR ROAD AND BRIDGE CONSTRUCTION, ADOPTED APRIL 1, 2016", (HERE IN AFTER REFERRED TO AS THE STANDARD SPECIFICATIONS; THE "SUPPLEMENTAL SPECIFICATIONS AND RECURRING SPECIAL PROVISIONS" ADOPTED JANUARY 1, 2020; THE LATEST EDITION OF THE "ILLINOIS MANUAL ON UNIFORM TRAFFIC CONTROL DEVICES FOR STREETS AND HIGHWAYS"; THE DETAILS IN THE PLANS AND THE "SPECIAL PROVISIONS" INCLUDED IN THE DOCUMENTS.
- 2) ALL CLEARING, GRUBBING, FENCE REMOVAL, PAVEMENT REMOVAL, AND REMOVAL OF EXISTING DRAINAGE STRUCTURES SHALL BE INCLUDED IN THE COST OF EARTH EXCAVATION. ALL AGGREGATE AND BITUMINOUS PAVEMENT SHALL BE REMOVED AND PROPERLY DISPOSED OF BY THE CONTRACTOR IN A METHOD APPROVED BY THE ENGINEER. REMOVAL AND DISPOSAL OF PAVEMENT SHALL BE INCLUDED IN THE COST OF EARTH EXCAVATION AND NO ADDITIONAL COMPENSATION WILL BE ALLOWED.
- 3) WHERE SECTION OR SUBSECTION MONUMENTS ARE ENCOUNTERED, THE ENGINEER SHALL BE NOTIFIED BEFORE SUCH MONUMENTS ARE REMOVED. THE CONTRACTOR SHALL PROTECT AND CAREFULLY PRESERVE ALL PROPERTY MARKS AND MONUMENTS UNTIL THE OWNER, AN AUTHORIZED SURVEYOR OR AGENT HAS WITNESSED OR OTHERWISE REFERENCED THEIR LOCATION.
- 4) ANY REFERENCE TO STANDARDS THROUGHOUT THE PLANS OR SPECIAL PROVISIONS SHALL BE INTERPRETED TO BE THE LATEST STANDARD OF THE DEPARTMENT.
- 5) THE LOCATION ON THE PLANS OF EXISTING DRAINAGE STRUCTURES, TELEPHONE LINES, ELECTRIC LINES, WATER SERVICE LINES, GAS MAINS, AND OTHER UTILITY FACILITIES AS SHOWN ON THE PLANS ARE BASED ON FIELD INVESTIGATIONS AND THE BEST INFORMATION AVAILABLE, BUT THE LOCATIONS ARE NOT GUARANTEED. IT SHALL BE THE CONTRACTOR'S RESPONSIBILITY TO ASCERTAIN THEIR EXACT LOCATION FROM THE INDIVIDUAL UTILITY COMPANIES AND BY FIELD INSPECTION.
- 6) THE FOLLOWING RATES OF APPLICATION HAVE BEEN USED IN CALCULATING PLAN QUANTITIES
 AGGREGATE SURFACE COURSE 2.05 TON/CU YD
 STONE DUMPED RIPRAP 1.75 TON/CU YD
- 7) THE FINAL SURFACE OF ALL EMBANKMENT AREAS SHALL BE SEEDED. THE TOP 4 INCHES OF THE SEEDED AREAS SHALL BE TOPSOIL SUBJECT TO THE APPROVAL OF THE ENGINEER. THE COST OF SHAPING THE SLOPES AND PROVIDING TOP SOIL WILL NOT BE PAID FOR SEPARATELY BUT SHALL BE INCLUDED IN THE COST OF EARTH EXCAVATION.
- 8) THE AREA TO BE SEEDED SHALL CONSIST OF ALL DISTURBED EARTH SURFACES WITHIN THE RIGHT OF WAY OR AS DIRECTED BY THE ENGINEER.
 SEEDING, CLASS 2 (SPECIAL) = 0.3 ACRES
- 9) ALL WASTE MATERIAL FROM EXCAVATIONS SHALL BE DISPOSED OF BY THE CONTRACTOR. NO ADDITIONAL COMPENSATION WILL BE ALLOWED.
- 10) COMMITMENTS:
 - 1) TREES SHALL NOT BE CLEARED BETWEEN APRIL 1 TO SEPTEMBER 30.
 - 2) A BAT ASSESSMENT SHALL BE CONDUCTED IF WORK OCCURS TO EXISTING STRUCTURE AFTER JANUARY 9, 2021.

EARTHWORK SCHEDULE

| LOCATION | EARTH EXCAVATION | CHANNEL EXCAVATION | SHRINKAGE FACTOR | PERCENT USED | EXCAVATION ADJUSTED FOR SHRINKAGE | EMBANKMENT REQUIRED | EARTHWORK BALANCE |
|--------------------------------|------------------|--------------------|------------------|--------------|-----------------------------------|---------------------|-------------------|
| | CU.YD. | CU.YD. | | | CU.YD. | CU.YD. | CU.YD. |
| T.R. 380 / 1750E | | | | | | | |
| STA. 7+75.00 TO STA. 9+67.33 | 254 | | 25.00% | 100.00% | 190 | 234 | -44 |
| STA. 9+67.33 TO STA. 10+28.67 | | 315 | 25.00% | 70.00% | 165 | | 165 |
| STA. 10+28.67 TO STA. 12+10.00 | 218 | | 25.00% | 100.00% | 164 | 90 | 74 |
| ENTRANCES | | | | | | 64 | -64 |
| TOTAL | 472 | 315 | | | 519 | 388 | 131 |
| USE | 472 | 315 | | | | | 131 |

WASTE 131 CU YDS



TRANSITIONS FROM THE PROPOSED ROADWAY TO THE EXISTING ROADWAY ARE TO BE CONSTRUCTED FROM STA. 7+75 TO STA. 8+25 AND FROM STA. 11+60 TO STA. 12+10. SEE SHEET 5 FOR TRANSITION AT BRIDGE.

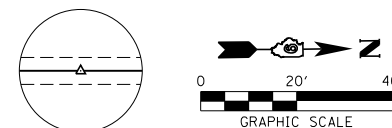
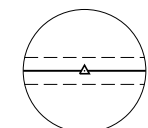
| | | | |
|----------------------------------------------------------------------------------------------------------------------------------------------------------------------------|------------------------|-------------------|-----------|
| FILE NAME = 170694-shit-typsections.dgn | USER NAME = rhosick | DESIGNED - J.W.F. | REVISED - |
| HAMPTON, LENZINI AND RENWICK, INC. 3035 STEVENSON DRIVE, SUITE 201 SPRINGFIELD, ILLINOIS 62703 ILLINOIS PROFESSIONAL DESIGN FIRM LS / PE / SE CORP. 184.000959 | PLOT SCALE = \$SCALE\$ | DRAWN - M.M.P. | REVISED - |
| PLOT DATE = 2/12/2020 | DATE = 02/10/2020 | CHECKED - S.W.M. | REVISED - |
| | | DATE = 02/10/2020 | REVISED - |

STATE OF ILLINOIS
WHITE COUNTY HIGHWAY DEPARTMENT

TYPICAL CROSS SECTIONS

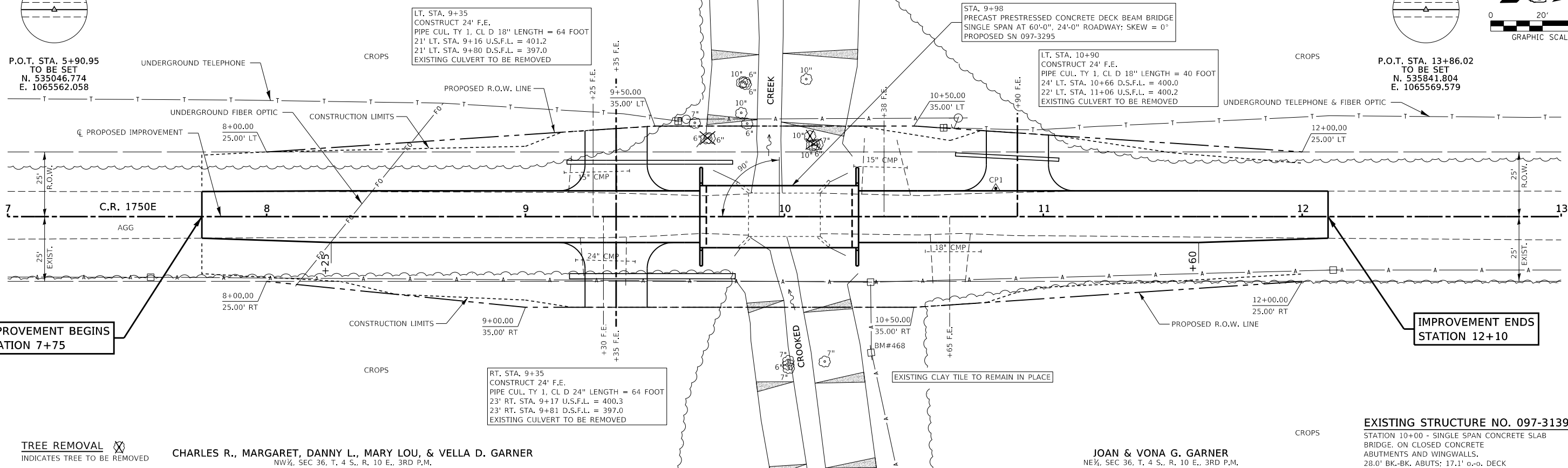
SCALE: SHEET NO. 1 OF 1 SHEETS STA. TO STA.

| | | | | |
|-------------------------------------|----------------|--------------------|--------------|-----------|
| T.R. | SECTION | COUNTY | TOTAL SHEETS | SHEET NO. |
| 380 | 13-10133-00-BR | WHITE | 22 | 3 |
| PHILLIPS ROAD DISTRICT | | CONTRACT NO. 99644 | | |
| ILLINOIS FED. AID PROJECT XWVR(289) | | | | |



| | |
|----------|--|
| DATE | |
| BY | |
| REVIEWED | |
| PLANNED | |
| NOTED | |
| NO. | |

| | |
|----------|--|
| DATE | |
| BY | |
| REVIEWED | |
| PLANNED | |
| NOTED | |
| NO. | |

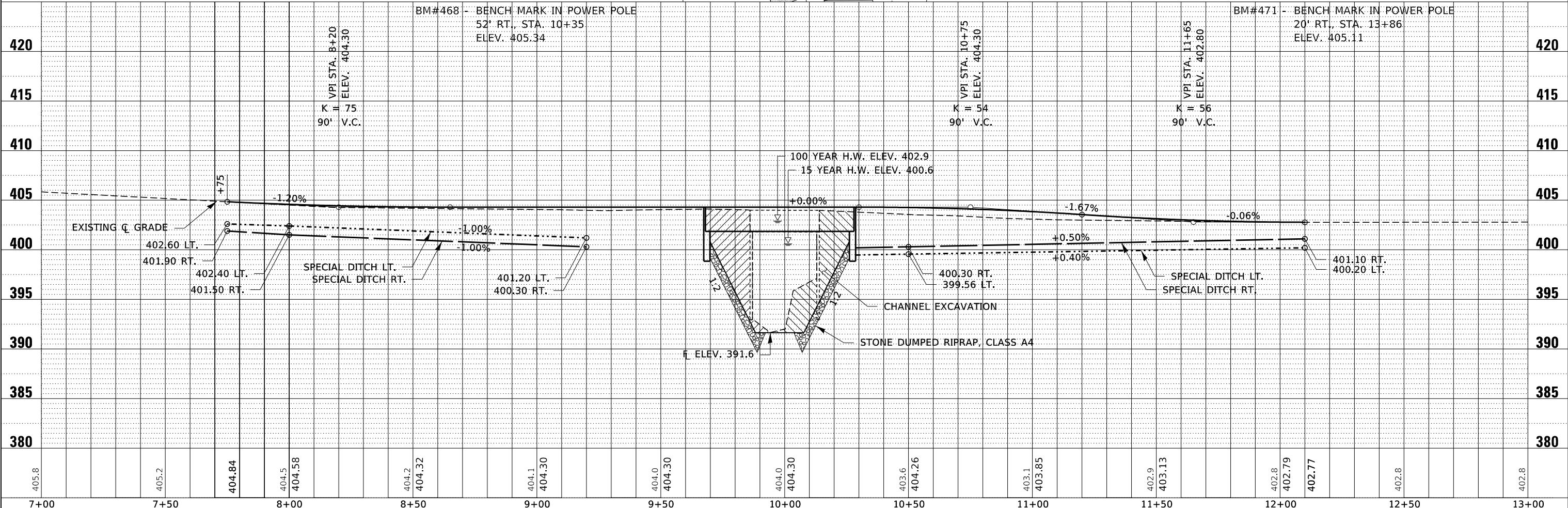


TREE REMOVAL INDICATES TREE TO BE REMOVED

CHARLES R., MARGARET, DANNY L., MARY LOU, & VELLA D. GARNER
 NW¼, SEC 36, T. 4 S., R. 10 E., 3RD P.M.

JOAN & VONA G. GARNER
 NE¼, SEC 36, T. 4 S., R. 10 E., 3RD P.M.

EXISTING STRUCTURE NO. 097-3139
 STATION 10+00 - SINGLE SPAN CONCRETE SLAB BRIDGE ON CLOSED CONCRETE ABUTMENTS AND WINGWALLS. 28.0' BK-BK. ABUTS: 17.1' o-c-o. DECK



| | | | | | | | | | | |
|------------------------------------------------------------------------------------------------------------------------------------------------------------------------------|--------------------------|-------------------|-----------|--------------------------------------------------------------------------------------------|-------------------------------------------------|------------------------|-------------------------|--------------------|------------------|-----------|
| FILE NAME = 170694-shi-planprf.dgn | USER NAME = rmosick | DESIGNED - S.A.A. | REVISED - | <p align="center">STATE OF ILLINOIS WHITE COUNTY HIGHWAY DEPARTMENT</p> | <p align="center">PLAN & PROFILE</p> | T.R. | SECTION | COUNTY | TOTAL SHEETS | SHEET NO. |
| HAMPTON, LENZINI AND RENWICK, INC. 3085 STEVENSON DRIVE, SUITE 201 SPRINGFIELD, ILLINOIS 62703 ILLINOIS PROFESSIONAL DESIGN FIRM L.S./P.E./S.E. CORP. 184.000959 | PLOT SCALE = \$\$\$CALE5 | DRAWN - T.W.K. | REVISED - | | | 380 | 13-10133-00-BR | WHITE | 22 | 4 |
| PLOT DATE = 2/12/2020 | CHECKED - J.W.F. | DATE = 02/10/2020 | REVISED - | | | PHILLIPS ROAD DISTRICT | | CONTRACT NO. 99644 | | |
| | | | | | | SCALE: 5V:20H | SHEET NO. 1 OF 1 SHEETS | STA. 7+00.00 | TO STA. 13+00.00 | |

BENCHMARK: Nail in Power Pole 52' Rt. Sta. 10+35, Elev. 405.34

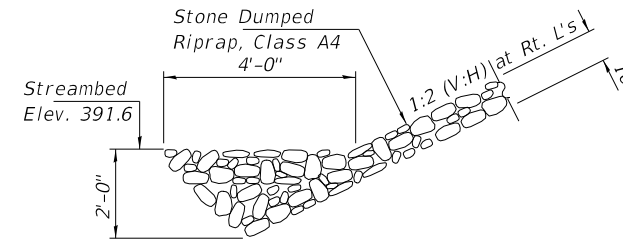
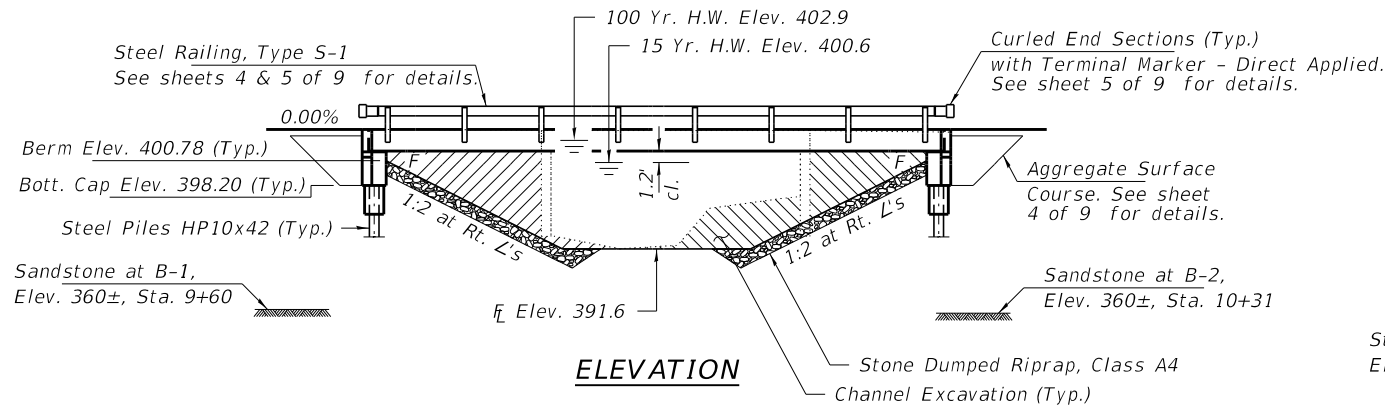
EXISTING STRUCTURE NO. 097-3139: Sta. 10+00 - Single span concrete slab bridge on closed concrete abutments and wingwalls. 28.0' bk.-bk.; 17.1' o.-o. deck.

Structure closed to traffic during construction.

No Salvage.

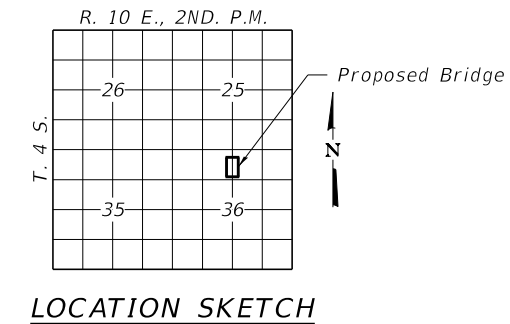
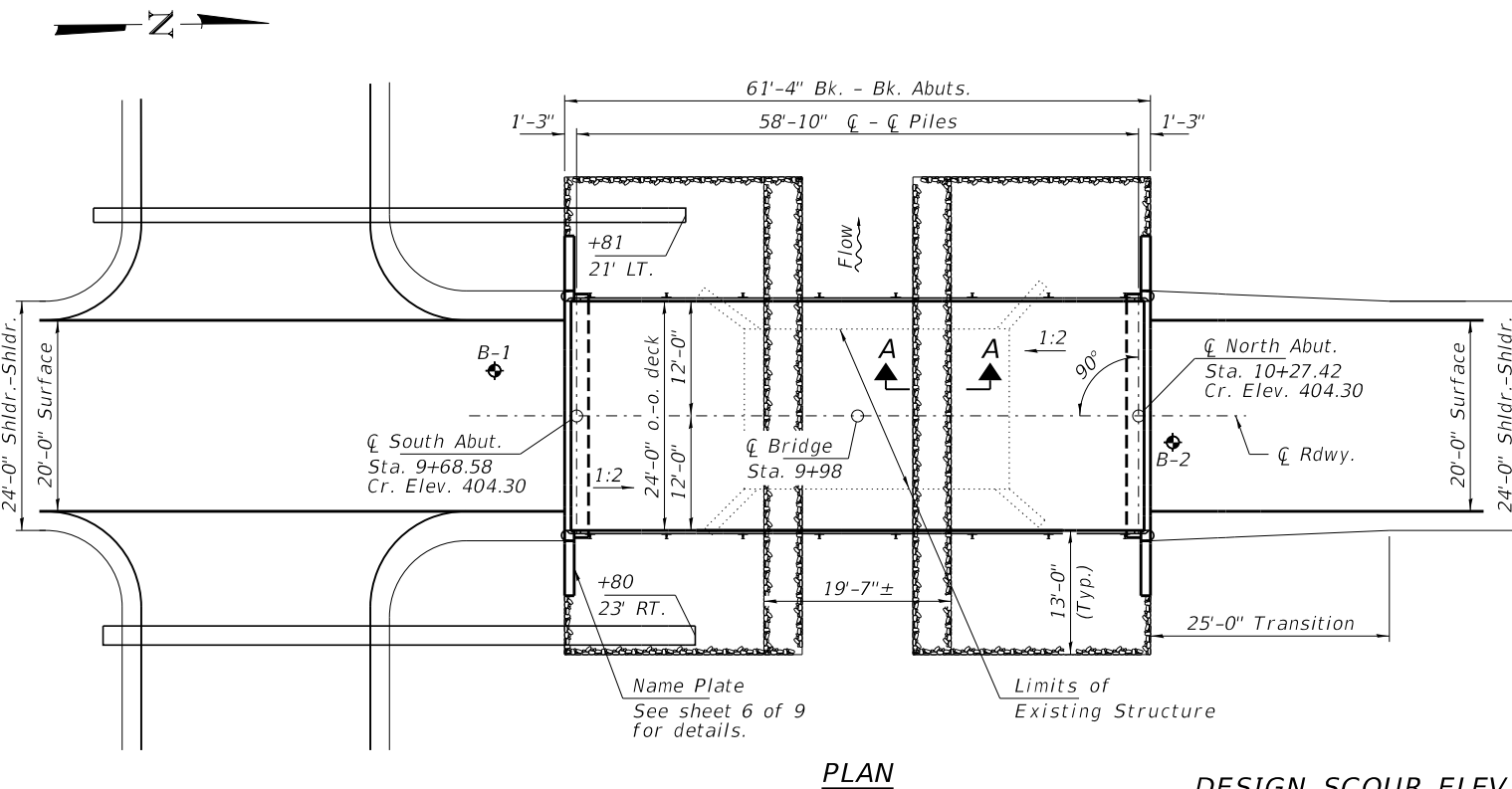
GENERAL NOTES

Layout of the slope protection system may be varied to suit ground conditions in the field as directed by the Engineer.
 Excavation behind existing abutment walls shall be performed to balance front and back soil pressure before removing the existing superstructure.
 Reinforcement bars shall conform to the requirements of ASTM A 706 Gr 60 (IL Modified). See Special Provisions.
 All bars to be epoxy coated.
 Excavation required to construct the Abutments shall be included in the cost of Concrete Structures. No additional compensation will be allowed for Structure Excavation.
 All proposed construction activities shall be in accordance with Nationwide Permit number 14 of the Department of the Army authorized under Section 404 of the Clean Water Act.
 The IEPA has issued Section 401 Water Quality Certification for this activity. See Special Provisions for conditions.



INDEX OF STRUCTURE SHEETS

1. General Plan & Elevation
2. 27"x48" PPC Deck Beam
3. 27"x48" PPC Deck Beam Details
4. Superstructure Details
5. Steel Railing, Type S-1
6. Abutments
7. HP Pile Details
- 8-9. Borings



NAME PLATE

See Std. 515001

CROOKED CREEK
 BUILT 202 BY
 WHITE COUNTY
 SEC. 13-10133-00-BR
 PHILLIPS ROAD DISTRICT
 STR. NO. 097-3295
 LOADING HL-93

DESIGN SPECIFICATIONS

2017 AASHTO LRFD Bridge Design Specifications, 8th Edition with all interims.

LOADING HL-93

Allow 50#/sq. ft. for future wearing surface.

DESIGN STRESSES

FIELD UNITS

f'c = 3,500 psi
 fy = 60,000 psi (Reinf.)

PRECAST PRESTRESSED UNITS

f'c = 6,000 psi
 f'ci = 5,000 psi
 fpu = 270,000 psi (1/2"Ø low lax. strands)
 fpbt = 201,960 psi (1/2"Ø low lax. strands)
 fy = 60,000 psi (Reinf.)

SEISMIC DATA

Seismic Performance Zone (SPZ) = 2
 Design Spectral Acceleration at 1.0 sec. (SD1) = 0.286g
 Design Spectral Acceleration at 0.2 sec. (SD5) = 0.681g
 Soil Site Class = D

WATERWAY INFORMATION

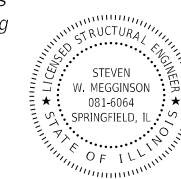
| Flood | Freq. Yr. | Q C.F.S. | Opening Sq. Ft. | | Nat. H.W.E. | | Head - Ft. | | Headwater El. | |
|----------------------------------------------------|-----------|----------|-----------------|-------|-------------|-------|------------|--------|---------------|----------------------------------------------------|
| | | | Exist. | Prop. | Exist. | Prop. | Exist. | Prop. | Exist. | Prop. |
| Design | 10 | 1030 | 140 | 310 | 400.07 | 0.46 | 0.13 | 400.53 | 400.20 | |
| Base | 15 | 1190 | 150 | 340 | 400.63 | 0.53 | 0.15 | 401.16 | 400.78 | |
| Scour Check | 100 | 2030 | 180 | 410 | 402.90 | 0.93 | 0.36 | 403.83 | 403.26 | |
| Max. Calc. | 200 | 2350 | 180 | 410 | 403.43 | 0.66 | 0.38 | 404.09 | 403.81 | |
| 10 Year Velocity through Existing Bridge = 7.4 fps | 500 | 2820 | 180 | 410 | 403.78 | 0.54 | 0.45 | 404.32 | 404.23 | 10 Year Velocity through Proposed Bridge = 3.3 fps |

DESIGN SCOUR ELEVATION TABLE

| Event/Limit State | Design Scour Elev. (ft.) | | Item 113 |
|-------------------|--------------------------|----------|----------|
| | S. Abut. | N. Abut. | |
| Q100 | 398.3 | 398.3 | 8 |
| Q500 | 398.3 | 398.3 | |
| Design | 398.3 | 398.3 | |
| Check | 398.3 | 398.3 | |

I certify that to the best of my knowledge, information and belief, this bridge design is structurally adequate for the design loading shown on the plans. The design is an economical one for the style of structure and complies with requirements of the current "AASHTO LRFD Specifications."

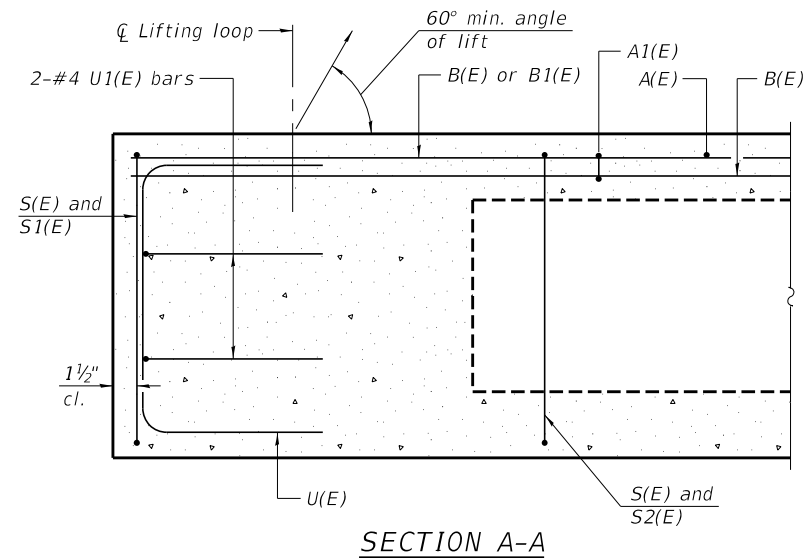
Steven W. Megginson 02/10/2020
 ILLINOIS STRUCTURAL ENGINEER NO. 081-6064



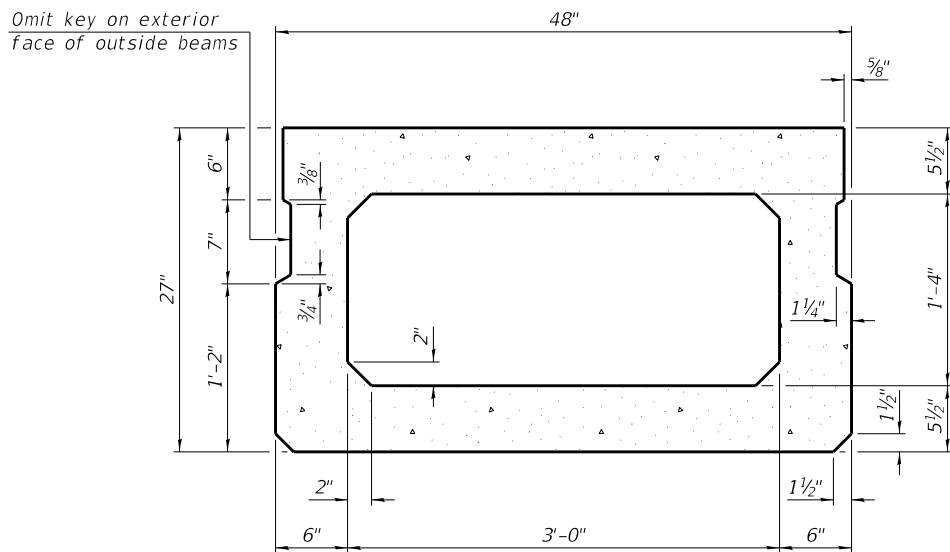
Expires 11-30-2020

TOTAL BILL OF MATERIAL

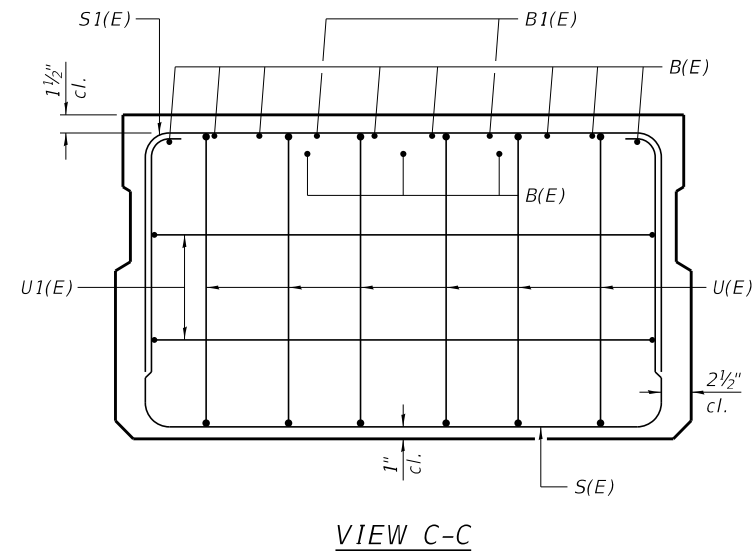
| ITEM | UNIT | SUPER | SUB | TOTAL |
|--------------------------------------------------|---------|-------|-------|-------|
| Channel Excavation | Cu. Yd. | | | 315 |
| Stone Dumped Riprap, Class A4 | Ton | | | 210 |
| Aggregate Surface Course, Type B | Ton | | | 110 |
| Removal of Existing Structures | Each | | | 1 |
| Concrete Structures | Cu. Yd. | | 24.2 | 24.2 |
| Concrete Encasement | Cu. Yd. | | 2.8 | 2.8 |
| Precast Prestressed Conc. Deck Beams (27" Depth) | Sq. Ft. | 1,440 | | 1,440 |
| Reinforcement Bars, Epoxy Coated | Pound | | 2,990 | 2,990 |
| Steel Railing, Type S-1 | Foot | 116 | | 116 |
| Furnishing Steel Piles HP10x42 | Foot | | 360 | 360 |
| Driving Piles | Foot | | 360 | 360 |
| Name Plates | Each | | 1 | 1 |
| Terminal Marker - Direct Applied | Each | 4 | | 4 |



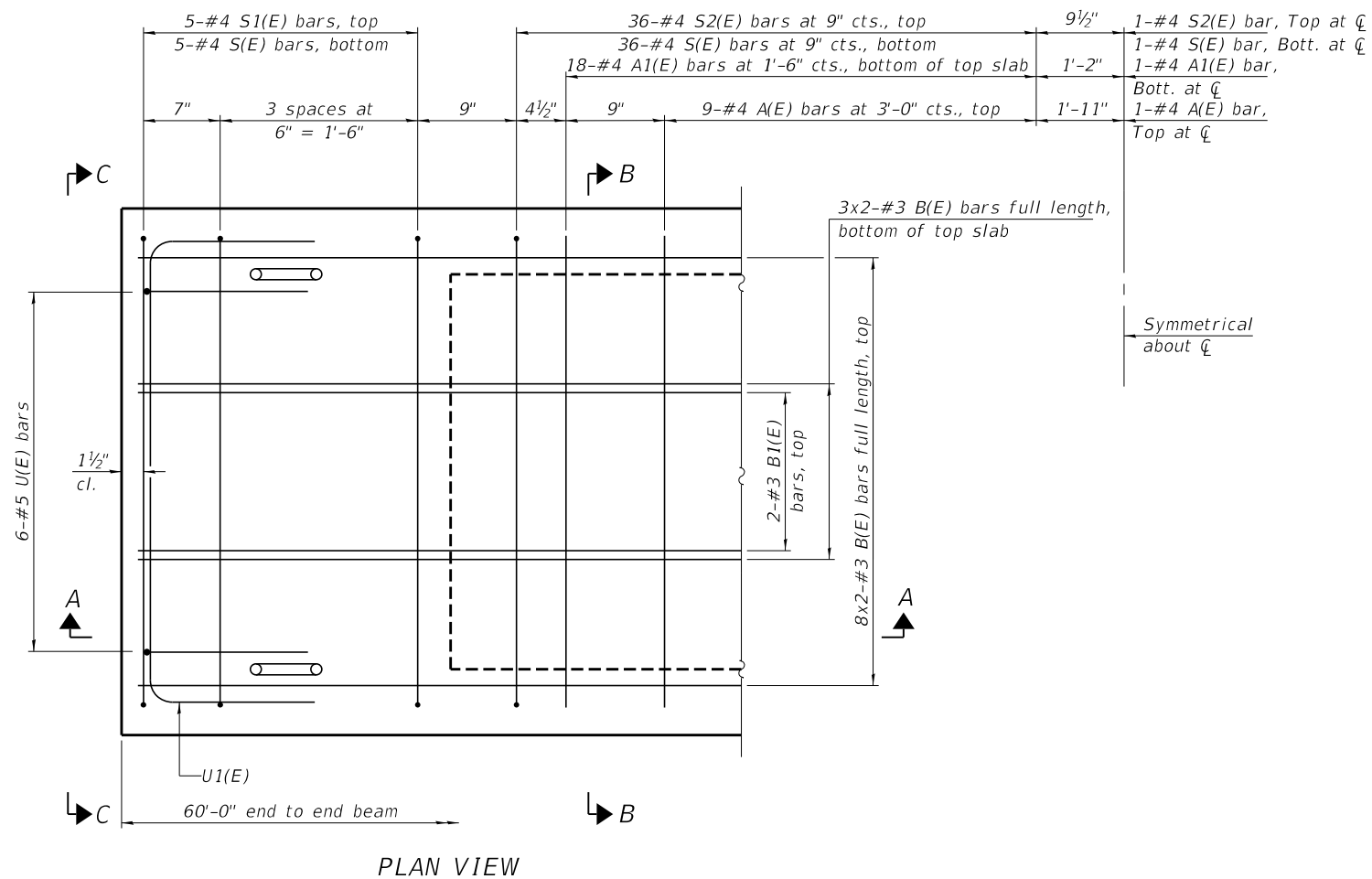
SECTION A-A



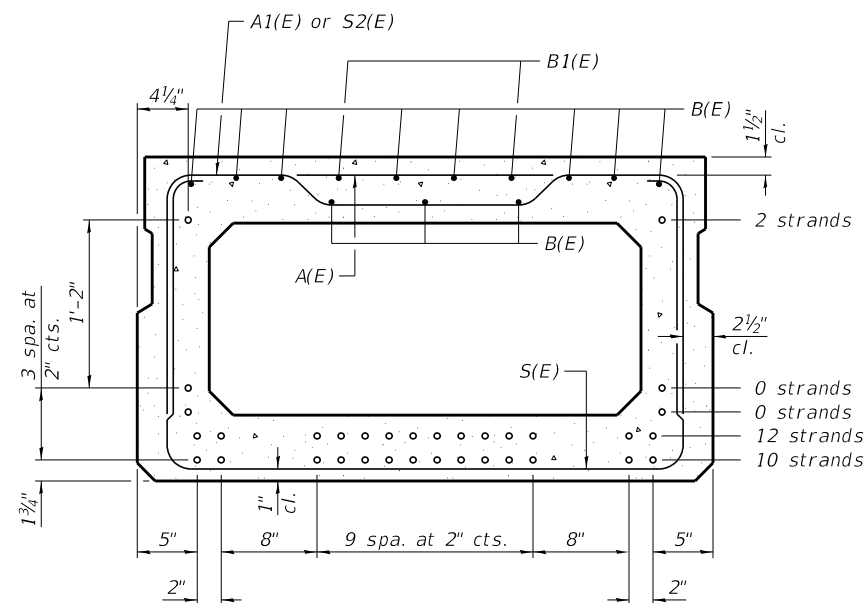
SECTION B-B
(Showing dimensions)



VIEW C-C



PLAN VIEW



SECTION B-B
(Showing reinforcement and permissible strand locations)

Note:
Place the number of strands specified in each row symmetrically about the centerline of beam in the permissible strand locations shown.

BAR LIST
ONE BEAM ONLY
(For information only)

| Bar | No. | Size | Length | Shape |
|-------|-----|------|--------|-------|
| A(E) | 19 | #4 | 3'-7" | — |
| A1(E) | 37 | #4 | 3'-10" | — |
| B(E) | 22 | #3 | 30'-8" | — |
| B1(E) | 4 | #3 | 10'-0" | — |
| S(E) | 83 | #4 | 8'-5" | □ |
| S1(E) | 10 | #4 | 6'-11" | □ |
| S2(E) | 73 | #4 | 7'-2" | □ |
| U(E) | 12 | #5 | 4'-6" | □ |
| U1(E) | 4 | #4 | 6'-0" | □ |

Note:
See sheet 3 & 4 of 9 for additional details and Bill of Material.

MINIMUM BAR LAP
#3 bar = 1'-6"

Notes:
Spacing of S(E) and S2(E) bars may be adjusted up to 4" in the immediate area of the transverse tie diaphragms to miss the block outs for the transverse ties.
Bars indicated thus 8x2-#3 etc. indicates 8 lines of bars with 2 lengths per line.

PD-2748-0

1-1-2020

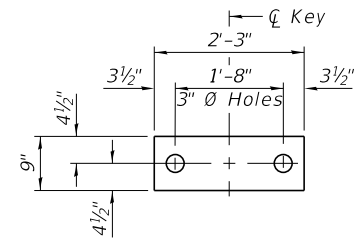
| | | | |
|----------------------------------------------------------------------------------------------------------------------------------------------------------------------------|-----------------------|-------------------|-----------|
| FILE NAME = 170694-shl-brdgn | USER NAME = rmosck | DESIGNED - J.W.F. | REVISED - |
| HAMPTON, LENZINI AND RENWICK, INC. 3035 STEVENSON DRIVE, SUITE 201 SPRINGFIELD, ILLINOIS 62703 ILLINOIS PROFESSIONAL DESIGN FIRM LS / PE / SE CORP. 184.000959 | PLOT SCALE = | CHECKED - S.W.M. | REVISED - |
| | PLOT DATE = 2/12/2020 | DRAWN - M.M.P. | REVISED - |
| | | CHECKED - S.W.M. | REVISED - |

STATE OF ILLINOIS
WHITE COUNTY HIGHWAY DEPARTMENT

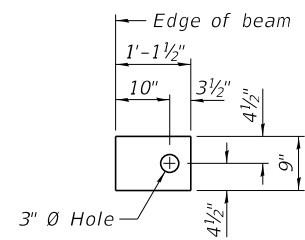
27" x 48" PPC DECK BEAM
STRUCTURE NO. 097-3295

SHEET NO. 2 OF 9 SHEETS

| | | | | |
|-------------------------------------|----------------|--------------------|--------------|-----------|
| T.R. | SECTION | COUNTY | TOTAL SHEETS | SHEET NO. |
| 380 | 13-10133-00-BR | WHITE | 22 | 6 |
| PHILLIPS ROAD DISTRICT | | CONTRACT NO. 99644 | | |
| ILLINOIS FED. AID PROJECT XWVR(269) | | | | |



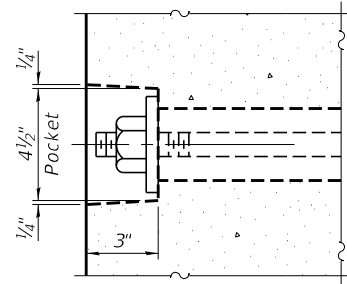
FABRIC BEARING PAD
(Interior - 10 Req'd)



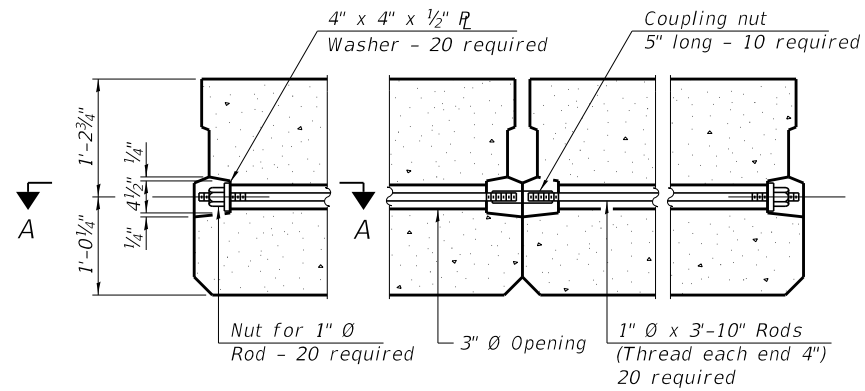
FABRIC BEARING PAD
(Exterior - 4 Req'd)

FIXED

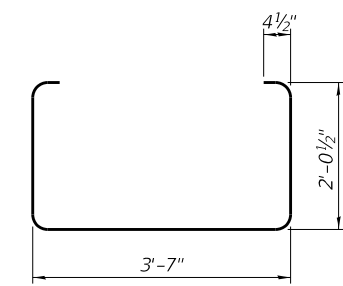
Notes:
All bearing pads shall be 1" thick.
Omit holes when using expansion bearings.
Expansion bearing pads shall be bonded to the substructure.



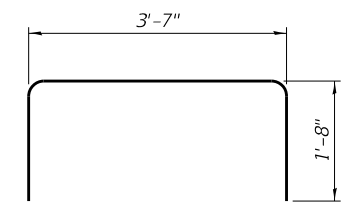
SECTION A-A



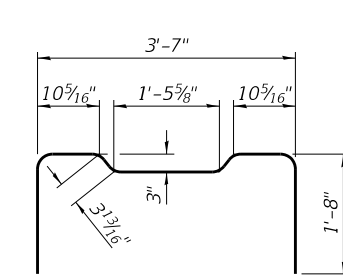
TYPICAL TRANSVERSE TIE ASSEMBLY



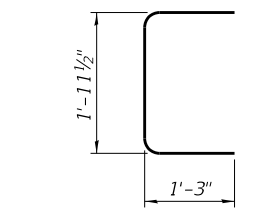
BAR S(E)



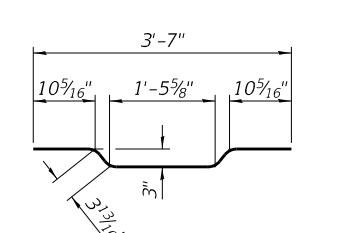
BAR S1(E)



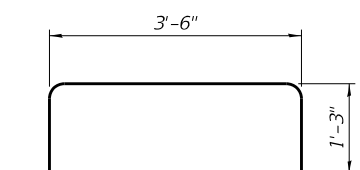
BAR S2(E)



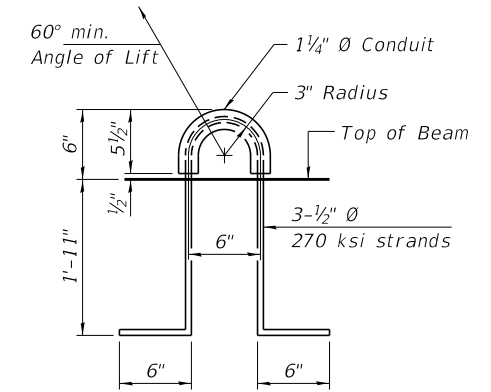
BAR U(E)



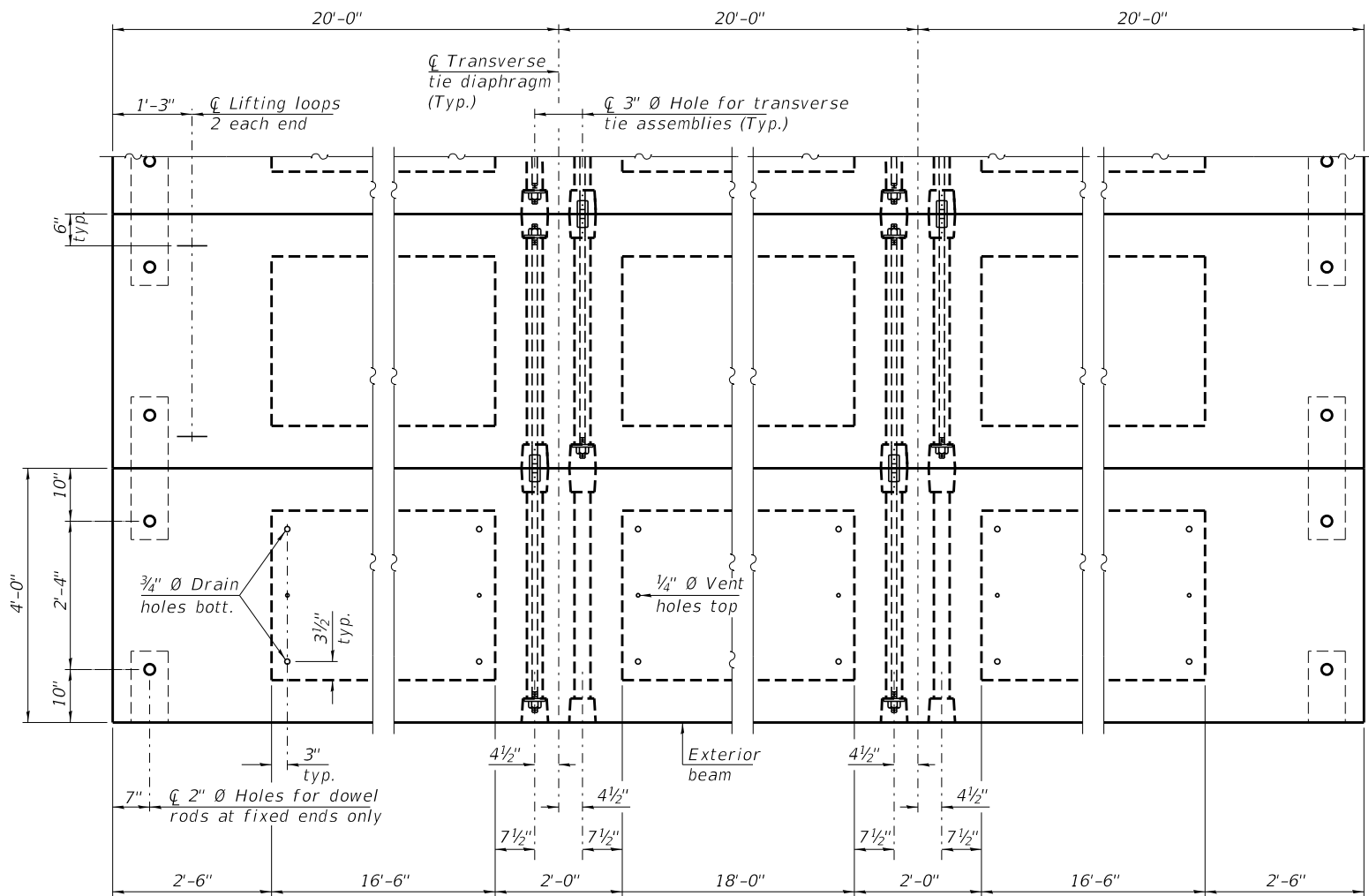
BAR A1(E)



BAR U1(E)



LIFTING LOOP DETAIL



NOTES

Prestressing steel shall be uncoated high strength, low relaxation 7-wire strand, Grade 270. The nominal diameter shall be 1/2" and the nominal cross-sectional area shall be 0.153 sq. in.
The 1" diameter rods in the transverse tie assembly shall be tightened to a snug fit and the threads set. Pockets on exterior faces of bridge shall be filled with grout after transverse tie assembly is in place.
Two 1/8" fabric adjusting shims of the dimensions of the exterior bearing pad shall be provided for each bearing pad location.
A minimum 2 1/2" diameter lifting pin shall be used to engage the lifting loops during handling.
Corrosion Inhibitor, per Article 1020.05(b)(10) and 1021.07 of the Standard Specifications, shall be used in the concrete for precast prestressed concrete deck beams.
Compressive strength of prestressed concrete, f'c, shall be 6000 psi.
Compressive strength of prestressed concrete at release, f'ci, shall be 5000 psi.
Reinforcement bars designated (E) shall be epoxy coated.

BILL OF MATERIAL

| | |
|-------------------------------------------------|---------------|
| Precast Prestressed Conc. Deck Bms. (27" depth) | Sq. Ft. 1,440 |
|-------------------------------------------------|---------------|

PDD-2748-0 1-1-2020

| | | | |
|----------------------------------------------------------------------------------------------------------------------------------------------------------------------------|-----------------------|-------------------|-----------|
| FILE NAME = 170694-shl-bridge.dgn | USER NAME = rmosick | DESIGNED - J.W.F. | REVISED - |
| HAMPTON, LENZINI AND RENWICK, INC. 3035 STEVENSON DRIVE, SUITE 201 SPRINGFIELD, ILLINOIS 62703 ILLINOIS PROFESSIONAL DESIGN FIRM LS / PE / SE CORP. 184.000959 | PLOT SCALE = | CHECKED - S.W.M. | REVISED - |
| | PLOT DATE = 2/12/2020 | DRAWN - M.M.P. | REVISED - |
| | | CHECKED - S.W.M. | REVISED - |

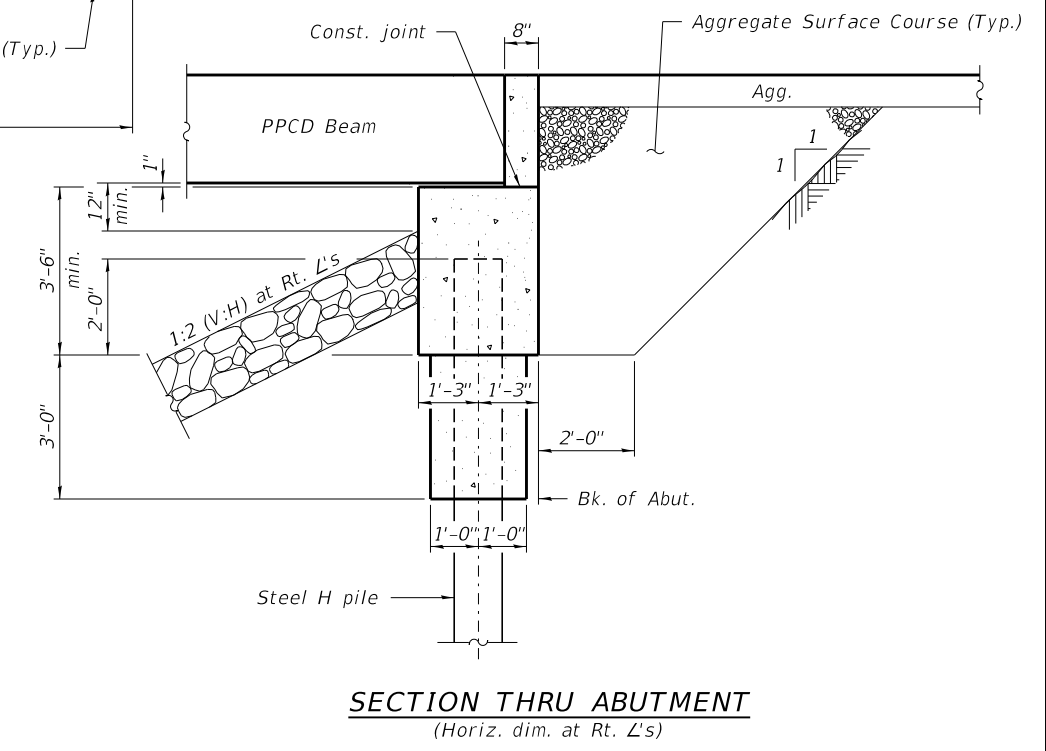
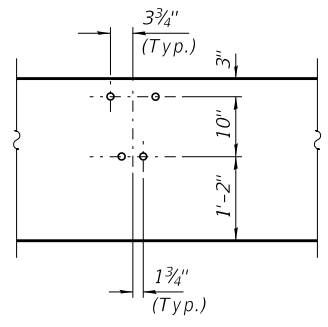
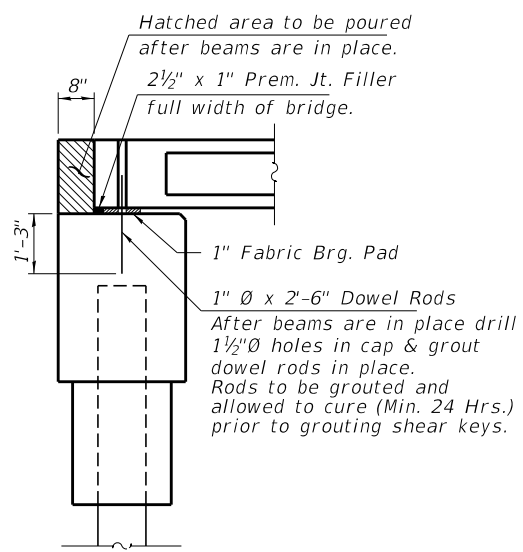
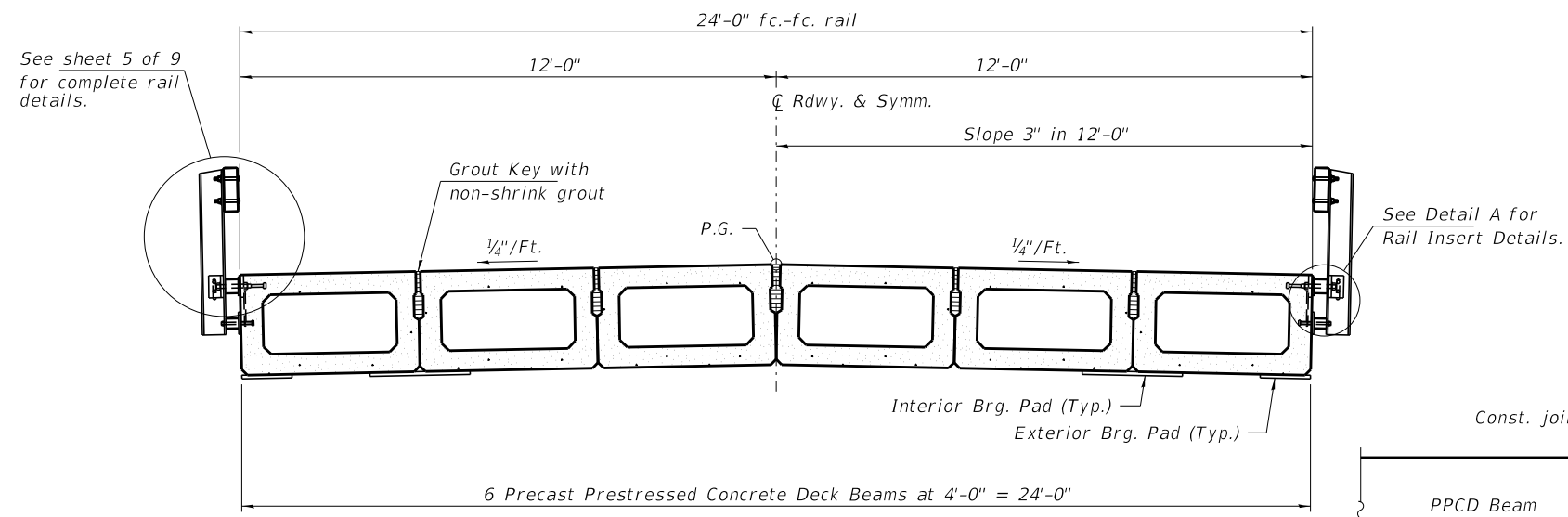
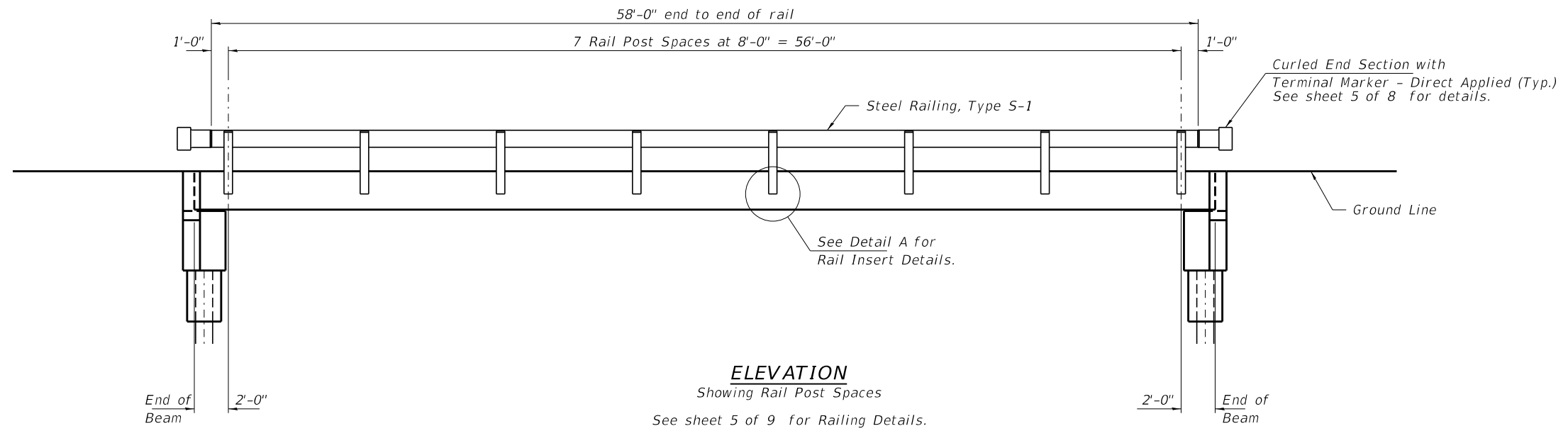
STATE OF ILLINOIS
WHITE COUNTY HIGHWAY DEPARTMENT

27" x 48" PPC DECK BEAM DETAILS
STRUCTURE NO. 097-3295

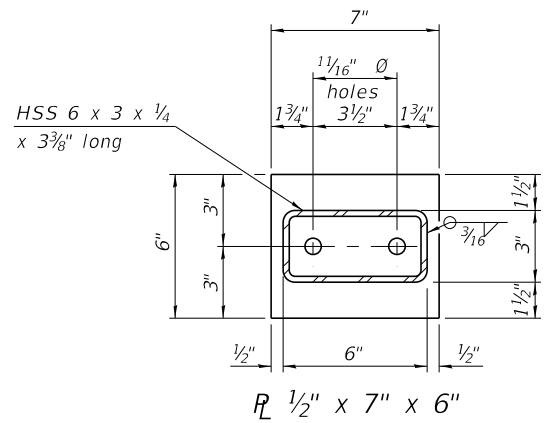
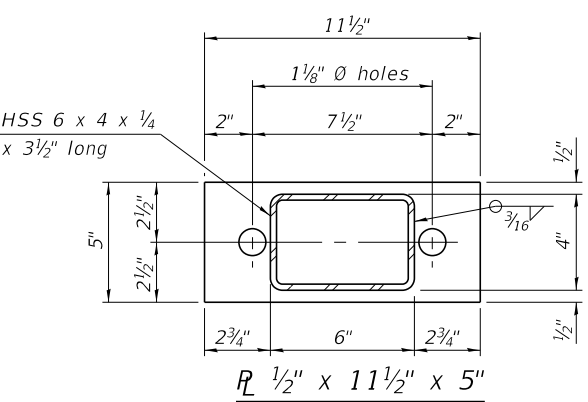
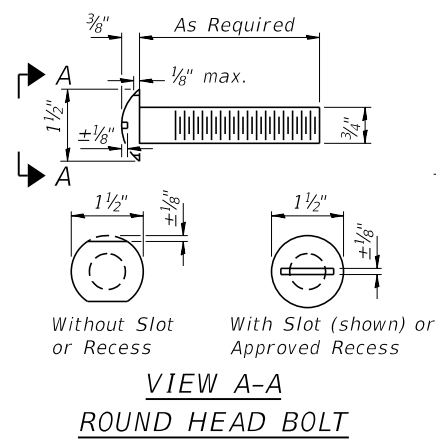
SHEET NO. 3 OF 9 SHEETS

| | | | | |
|------------------------|----------------|--------------------|--------------|-----------|
| T.R. | SECTION | COUNTY | TOTAL SHEETS | SHEET NO. |
| 380 | 13-10133-00-BR | WHITE | 22 | 7 |
| PHILLIPS ROAD DISTRICT | | CONTRACT NO. 99644 | | |

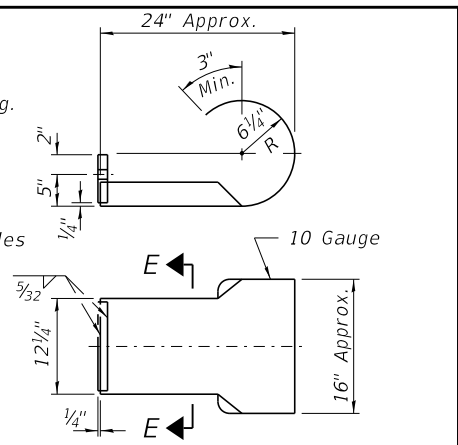
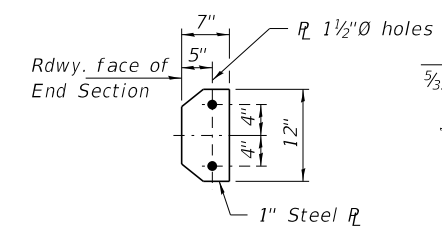
ILLINOIS FED. AID PROJECT XWWR(269)



| | | | | | | | | | | |
|-----------------------------------------------------------------------------------------------------------------------------------------------------------------------------------|---------------------|-------------------|-----------|--------------------------------------------------------------|----------------------------------------------------------|-------------------------|----------------|--------------------|--------------|---------------------------------------|
| FILE NAME = 170694-shl-bridge.dgn | USER NAME = rmosick | DESIGNED - J.W.F. | REVISED - | STATE OF ILLINOIS WHITE COUNTY HIGHWAY DEPARTMENT | SUPERSTRUCTURE DETAILS STRUCTURE NO. 097-3295 | T.R. | SECTION | COUNTY | TOTAL SHEETS | SHEET NO. |
| HAMPTON, LENZINI AND RENWICK, INC. 3035 STEVENSON DRIVE, SUITE 201 SPRINGFIELD, ILLINOIS 62703 ILLINOIS PROFESSIONAL DESIGN FIRM LS / PE / SE CORP. 184.000959 | PLOT SCALE = | CHECKED - S.W.M. | REVISED - | | | 380 | 13-10133-00-BR | WHITE | 22 | 8 |
| PLOT DATE = 2/12/2020 | DRAWN - M.M.P. | CHECKED - S.W.M. | REVISED - | | | PHILLIPS ROAD DISTRICT | | CONTRACT NO. 99644 | | ILLINOIS FED. AID PROJECT XVWR(269) |
| | | | | | | SHEET NO. 4 OF 9 SHEETS | | | | |

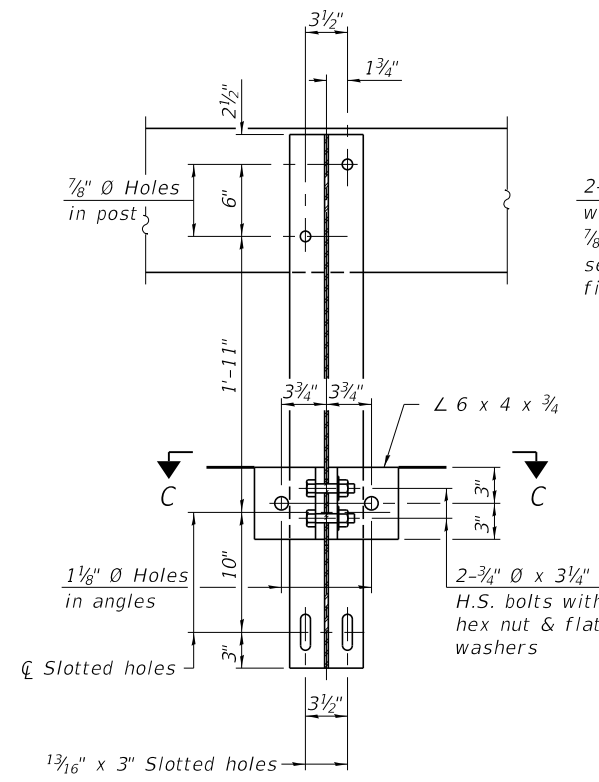


Note: Cost of curled end sections shall be included with the Steel Railing. (4 Required)

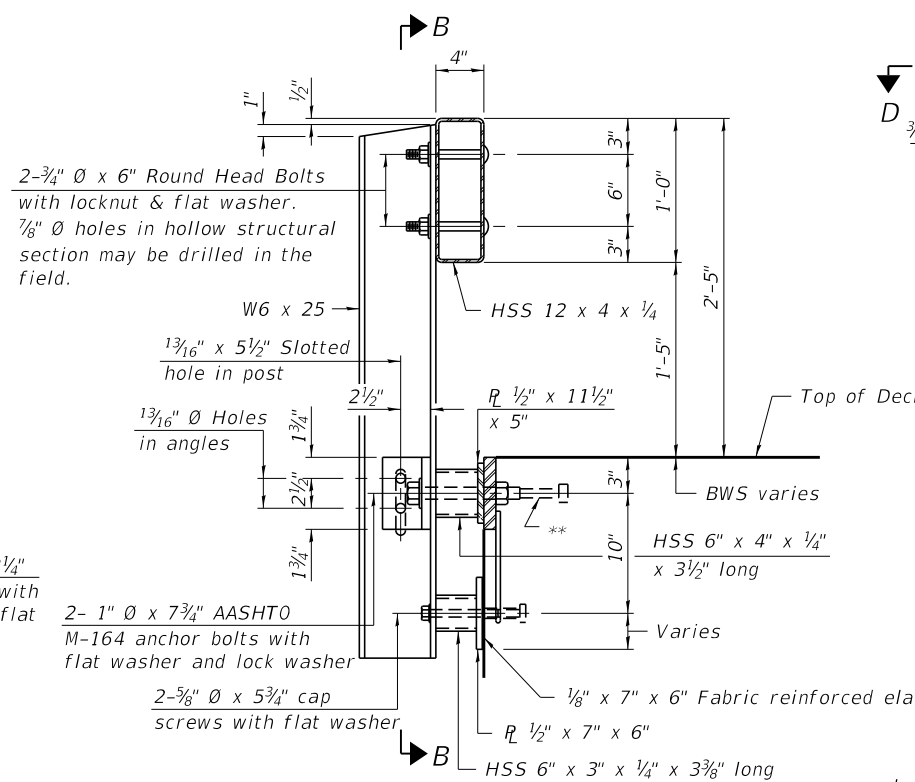


SECTION E-E

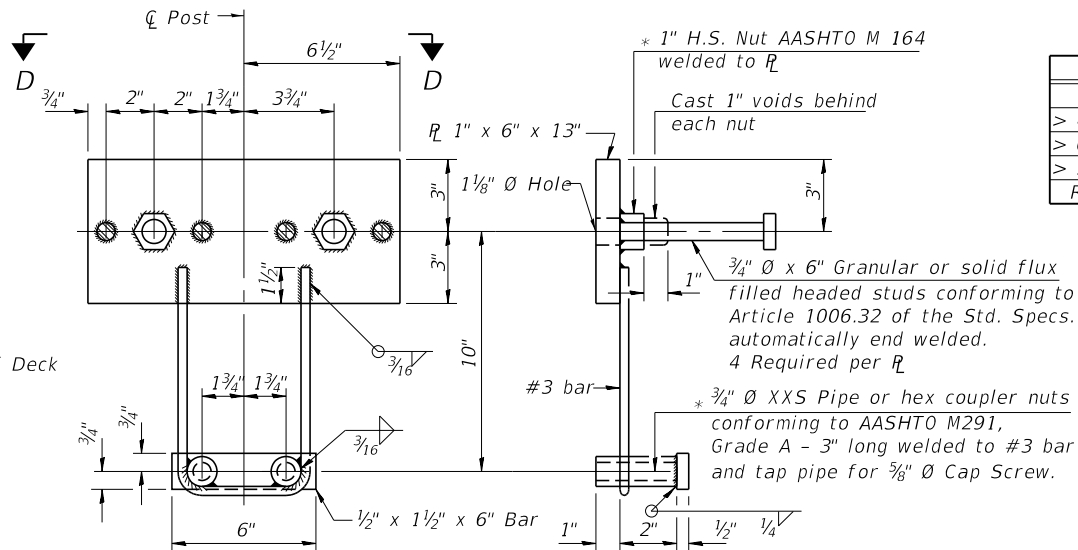
CURLED END SECTION DETAILS



SECTION B-B



SECTION AT RAILING POST



ANCHOR DEVICE

* Threaded areas shall be plugged or blocked off during casting of beam.

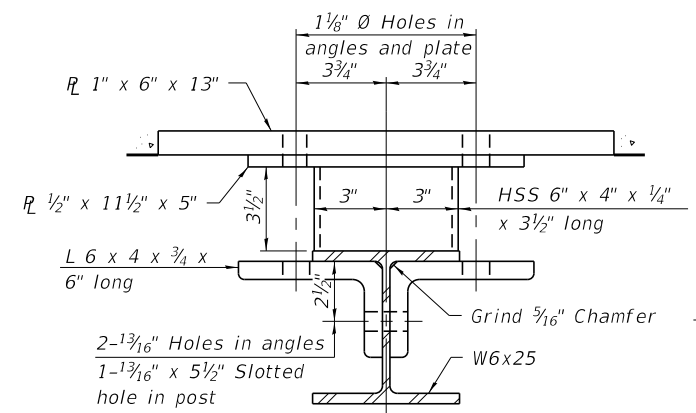
SPLICE DIMENSIONS

| T | D | A | B | C | E |
|---------------|--------|--------|--------|--------|--------|
| ≤ 4" | 2 1/2" | 1'-8" | 2" | 4" | 2 1/2" |
| > 4" ≤ 6 1/2" | 3 3/4" | 2'-0" | 2 1/2" | 5 1/2" | 3 1/2" |
| > 6 1/2" ≤ 9" | 5" | 2'-4" | 3 1/2" | 6 1/2" | 9" |
| > 9" ≤ 13" | 7" | 2'-10" | 4 1/2" | 8 1/2" | 11" |
| Rail Splice | 1/4" | 1'-8" | 2" | 4" | — |

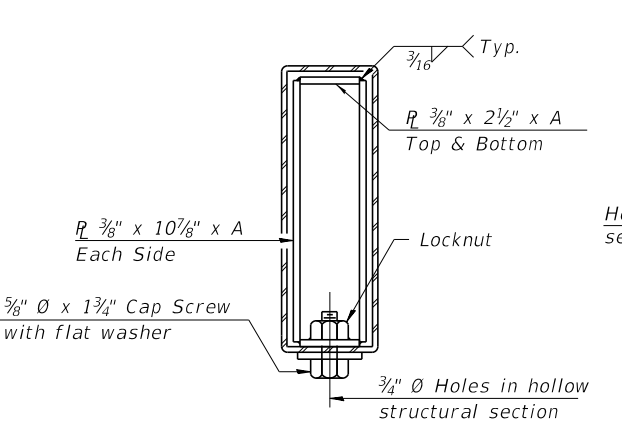
T = Total movement at expansion joint as shown on the design plans.

Notes:
For multi-span bridges, sufficient 1/4" x 6" x 1'-2" galvanized steel shims shall be provided to align rail between adjacent spans. Cost included with Steel Railing, Type S-1.
All steel rail elements shall be galvanized according to Article 509.05 of the Standard Specifications.

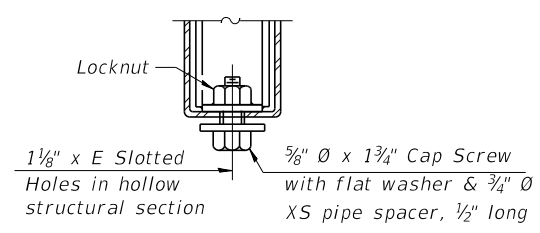
**The studs of the anchor devices shall be placed below the top reinforcement bars and the outermost longitudinal reinforcement bar shall be placed directly above the studs of the rail post anchor device. The anchorage studs may be bent down 1/2" to accommodate the top reinforcement bar placement.



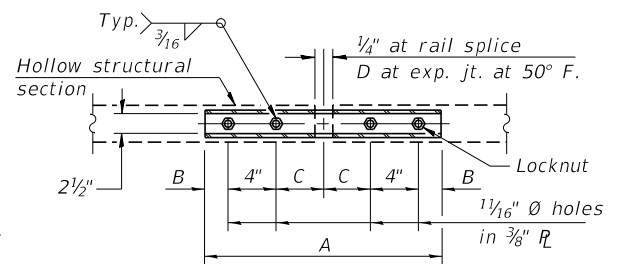
SECTION C-C



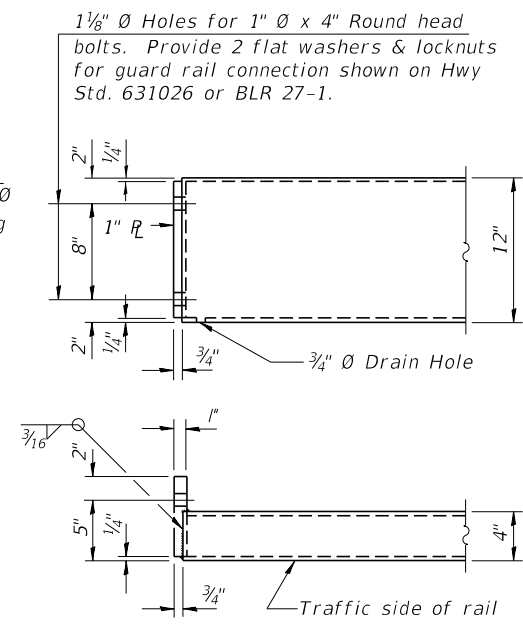
SECTIONS AT RAIL SPLICE



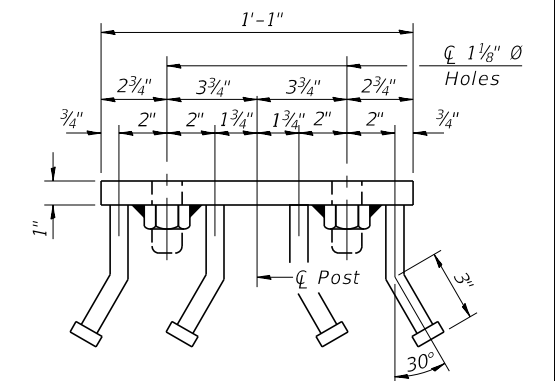
RAIL SPLICE CONNECTION AT EXPANSION JT.



PLAN-BOTT. SPLICE R TYPICAL



END OF RAIL DETAILS



VIEW D-D

BILL OF MATERIAL

| Item | Unit | Quantity |
|-------------------------|------|----------|
| Steel Railing, Type S-1 | Foot | 116 |

R-23A 8-11-2017 (10'-9" Maximum Post Spacing)

| | | | |
|------------------------------------|--------------------|-------------------|-----------|
| FILE NAME = 170694-shl-bridge.dgn | USER NAME = rmosck | DESIGNED - J.W.F. | REVISED - |
| HAMPTON, LENZINI AND RENWICK, INC. | | CHECKED - S.W.M. | REVISED - |
| 3035 STEVENSON DRIVE, SUITE 201 | | DRAWN - M.M.P. | REVISED - |
| SPRINGFIELD, ILLINOIS 62703 | | CHECKED - S.W.M. | REVISED - |
| ILLINOIS PROFESSIONAL DESIGN FIRM | | | |
| LS / PE / SE CORP. 184.009959 | | | |

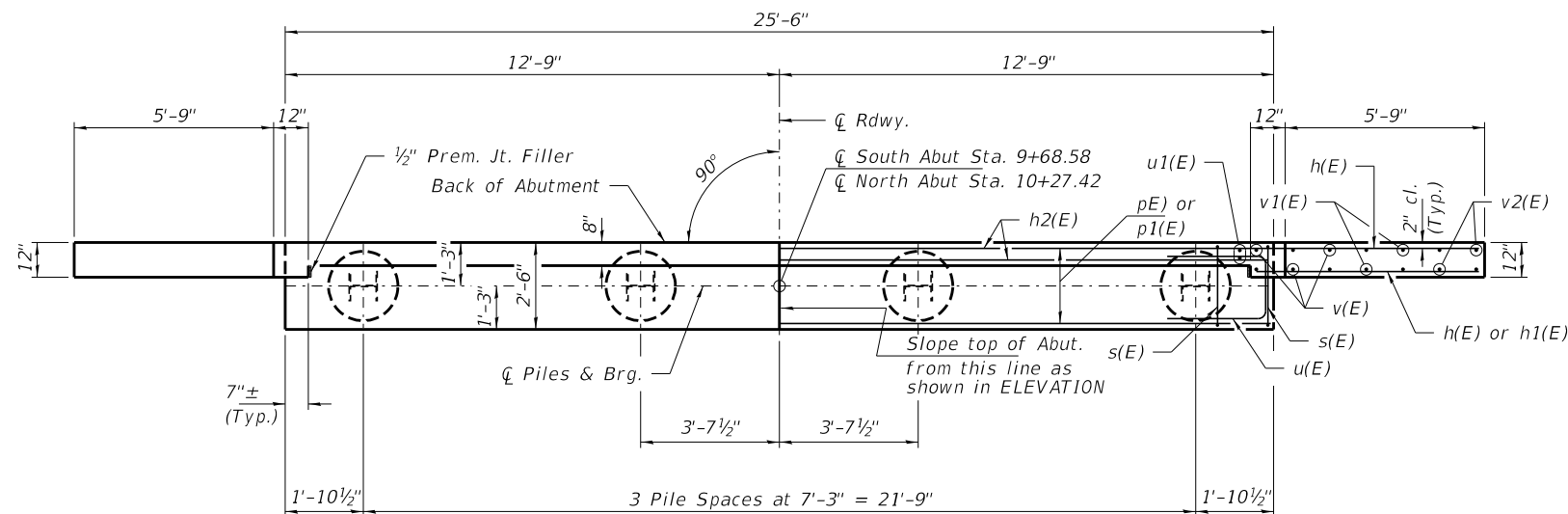
STATE OF ILLINOIS
WHITE COUNTY HIGHWAY DEPARTMENT

RAILING DETAILS
STRUCTURE NO. 097-3295

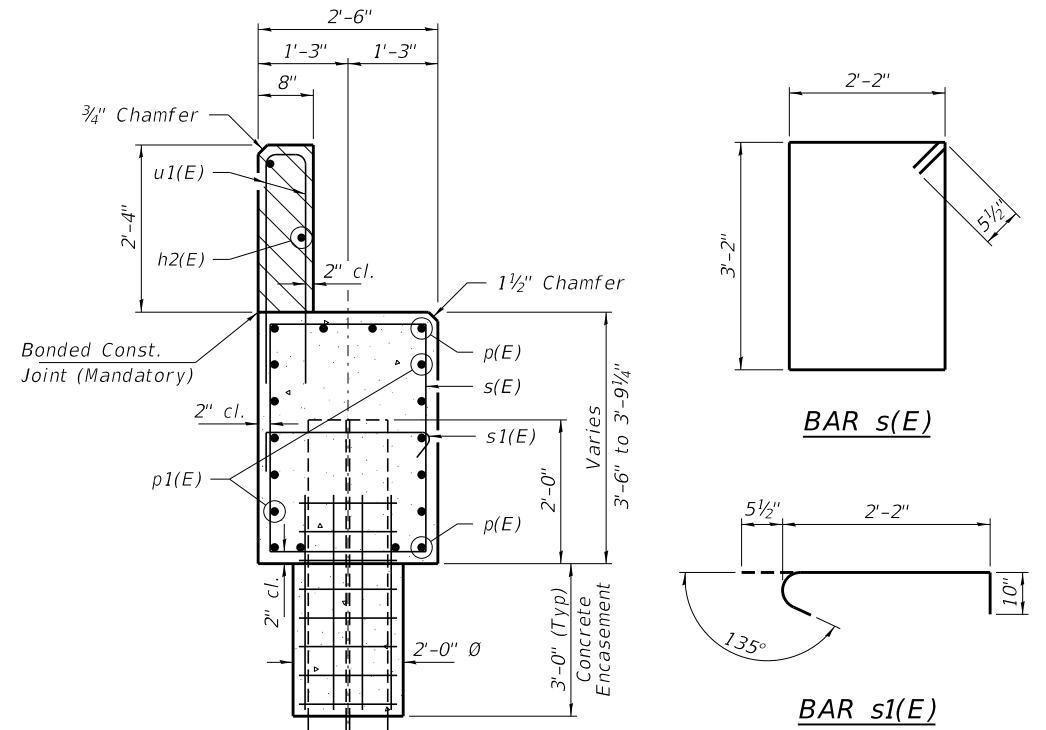
SHEET NO. 5 OF 9 SHEETS

| | | | | |
|------------------------|----------------|--------------------|--------------|-----------|
| T.R. | SECTION | COUNTY | TOTAL SHEETS | SHEET NO. |
| 380 | 13-10133-00-BR | WHITE | 22 | 9 |
| PHILLIPS ROAD DISTRICT | | CONTRACT NO. 99644 | | |

ILLINOIS FED. AID PROJECT XWVR(269)

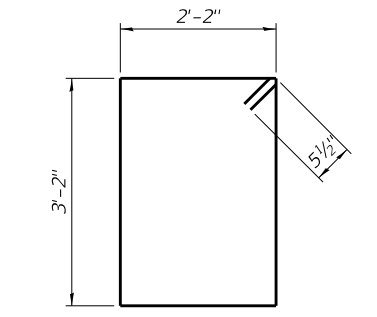


PLAN

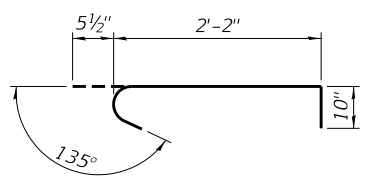


SECTION A-A

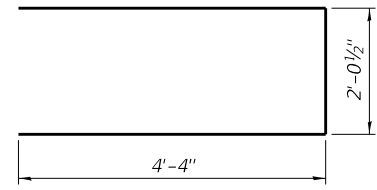
Hatched area to be poured after beams are in place.
Cast top of wingwall flush with exterior beam face after beams have been erected.



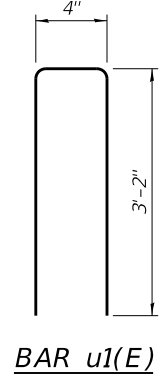
BAR s(E)



BAR s1(E)



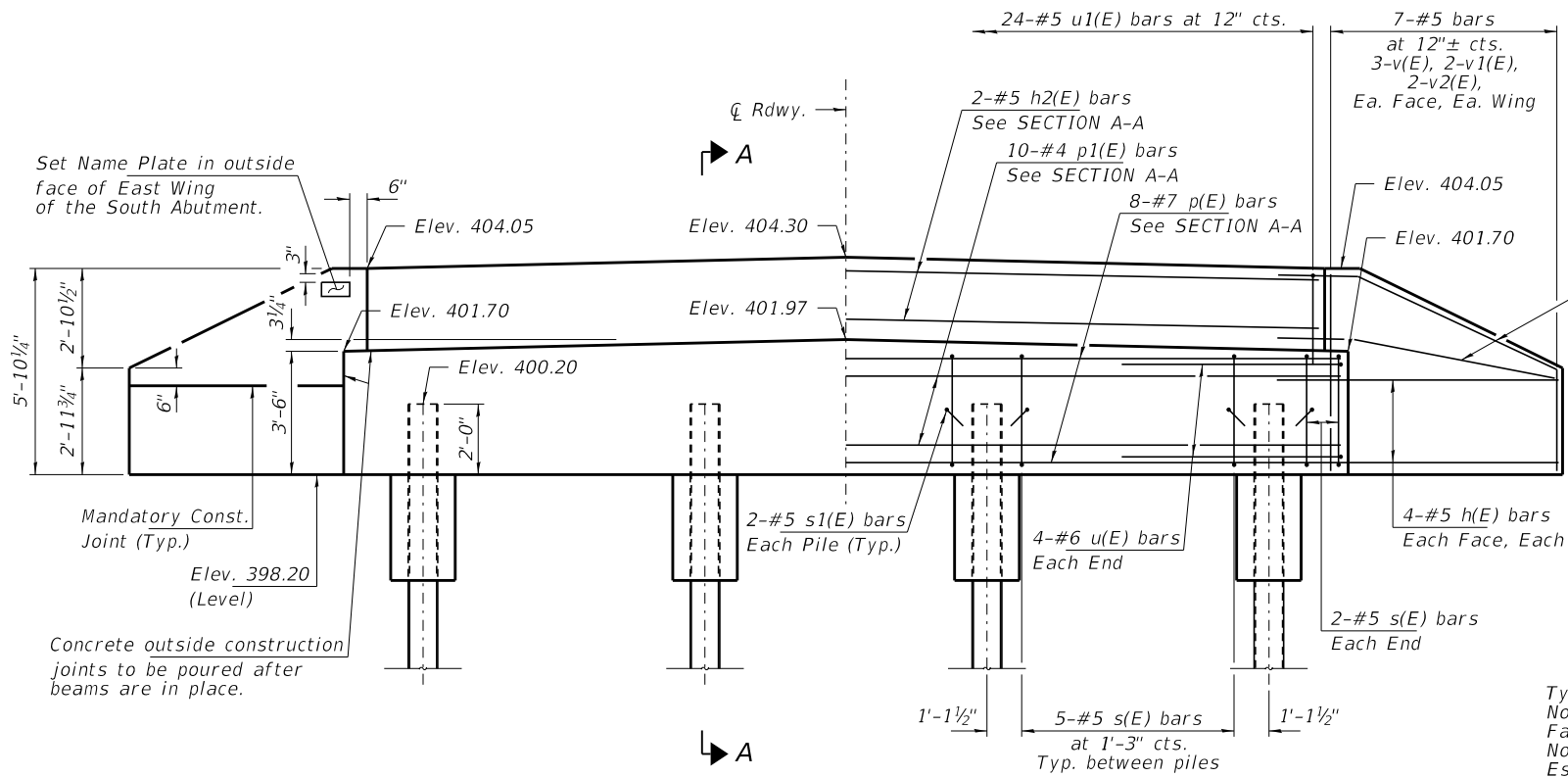
BAR u(E)



BAR u1(E)

BILL OF MATERIAL - 2 ABUTS.

| BAR | NO. | SIZE | LENGTH | SHAPE |
|---------------------------|-----|------|---------|-------|
| h(E) | 40 | #5 | 8'-0" | — |
| h1(E) | 8 | #5 | 6'-6" | — |
| h2(E) | 4 | #5 | 25'-2" | — |
| p(E) | 16 | #7 | 25'-2" | — |
| p1(E) | 20 | #4 | 25'-2" | — |
| s(E) | 38 | #5 | 11'-7" | □ |
| s1(E) | 16 | #5 | 3'-6" | ┌ |
| u(E) | 16 | #6 | 10'-9" | U |
| u1(E) | 48 | #5 | 6'-8" | U |
| v(E) | 24 | #5 | 4'-10" | — |
| v1(E) | 16 | #5 | 3'-9" | — |
| v2(E) | 16 | #5 | 2'-8" | — |
| Concrete Structures | | | Cu. Yd. | 24.2 |
| Concrete Encasement | | | Cu. Yd. | 2.8 |
| Reinf. Bars, Epoxy Coated | | | Pound | 2,990 |
| Steel Piles HP10x42 | | | Foot | 360 |
| Name Plates | | | Each | 1 |



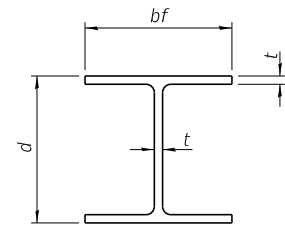
ELEVATION

Note: Extend h(E) bars into abutment cap.

Fan 2-#5 h(E) bars (B.F.)
Fan 2-#5 h1(E) bars (F.F.)
Each Wing, Bend in field.

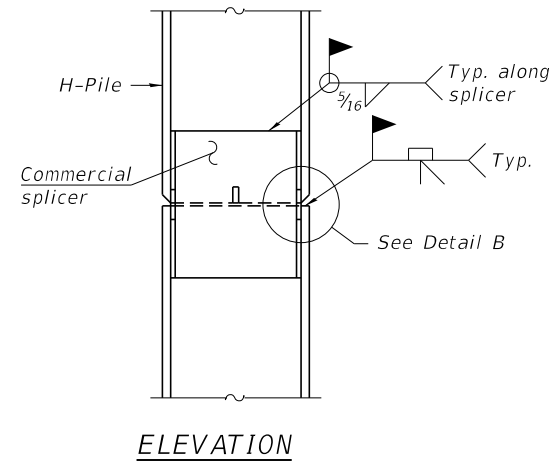
PILE DATA

Type _____ Steel HP10x42
No. Req'd. (2 Abuts.) _____ 8
Factored Resistance Available (Rf) _____ 184 Kips/Pile
Nominal Required Bearing (Rn) _____ 335 Kips/Pile
Est. Length _____ 45 Ft/Pile

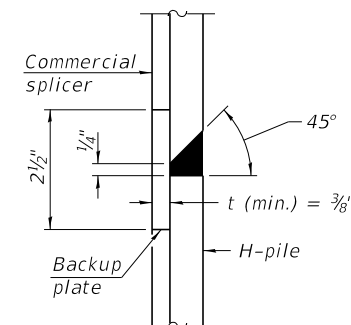


STEEL PILE TABLE

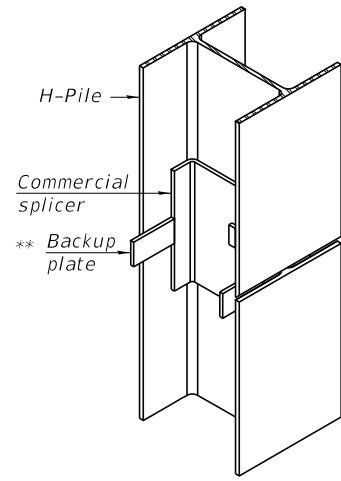
| Designation | Depth d | Flange width bf | Web and Flange thickness t | Encasement diameter A |
|-------------|---------|-----------------|----------------------------|-----------------------|
| HP 14x117 | 14 1/4" | 14 7/8" | 1 3/16" | 30" |
| x102 | 14" | 14 3/4" | 1 1/16" | 30" |
| x89 | 13 7/8" | 14 3/4" | 5/8" | 30" |
| x73 | 13 3/8" | 14 3/8" | 1/2" | 30" |
| HP 12x84 | 12 1/4" | 12 1/4" | 1 1/16" | 24" |
| x74 | 12 1/8" | 12 1/4" | 5/8" | 24" |
| x63 | 12" | 12 1/8" | 1/2" | 24" |
| x53 | 11 3/4" | 12" | 7/16" | 24" |
| HP 10x57 | 10" | 10 1/4" | 9/16" | 24" |
| x42 | 9 3/4" | 10 1/8" | 7/16" | 24" |
| HP 8x36 | 8" | 8 1/8" | 7/16" | 18" |



ELEVATION

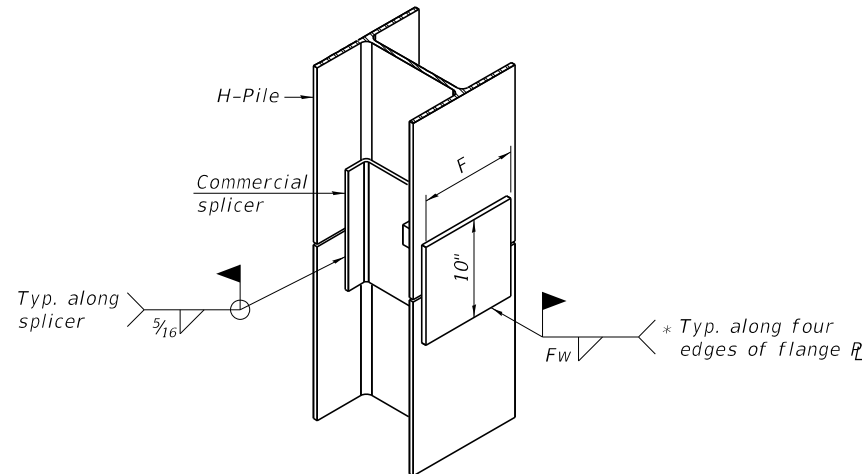


DETAIL "B"



ISOMETRIC VIEW

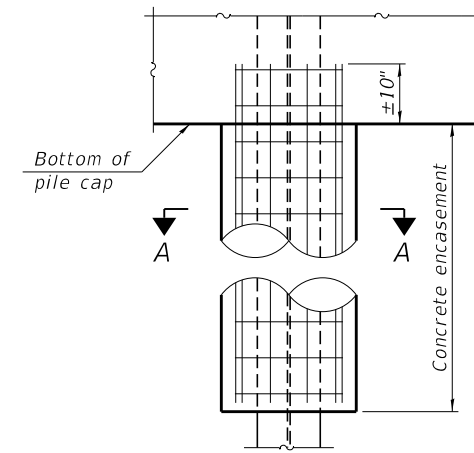
WELDED COMMERCIAL SPLICE



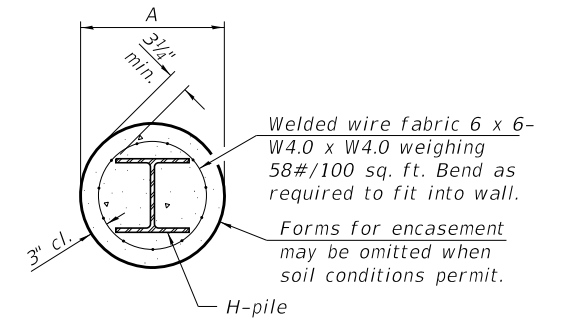
ISOMETRIC VIEW

WELDED COMMERCIAL SPLICE ALTERNATE

- * Interrupt welds 1/4" from end of web and/or each flange.
- ** Remove portions of backup plates that extend outside the flanges.
- *** Weld size per pile shoe manufacturer (5/16" min.).

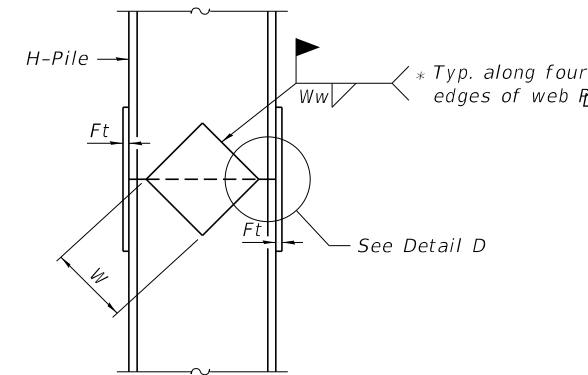


ELEVATION

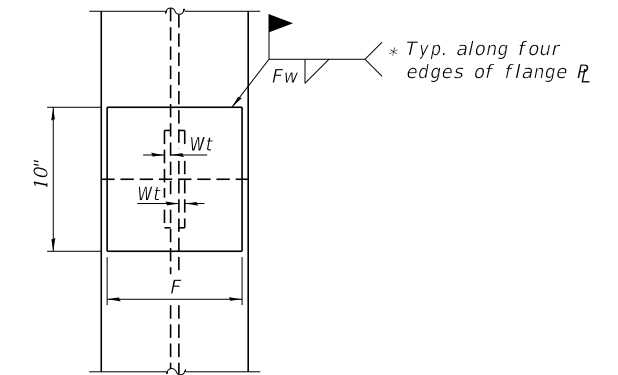


SECTION A-A

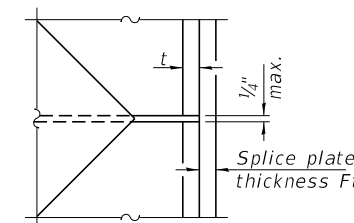
INDIVIDUAL PILE CONCRETE ENCASUREMENT (when specified)



ELEVATION



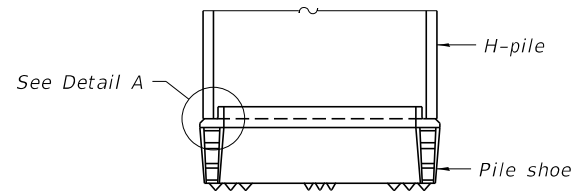
END VIEW



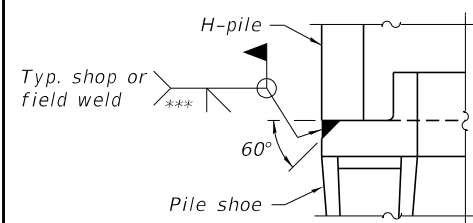
DETAIL D

WELDED PLATE FIELD SPLICE

| Designation | F | Ft | Fw | W | Wt | Ww |
|-------------|---------|------|---------|--------|------|------|
| HP 14x117 | 12 1/2" | 1" | 7/8" | 7 3/4" | 5/8" | 1/2" |
| x102 | 12 1/2" | 7/8" | 3/4" | 7 3/4" | 5/8" | 1/2" |
| x89 | 12 1/2" | 3/4" | 1 1/16" | 7 3/4" | 5/8" | 1/2" |
| x73 | 12 1/2" | 5/8" | 9/16" | 7 3/4" | 5/8" | 1/2" |
| HP 12x84 | 10" | 7/8" | 1 1/16" | 6 1/2" | 5/8" | 1/2" |
| x74 | 10" | 7/8" | 1 1/16" | 6 1/2" | 5/8" | 1/2" |
| x63 | 10" | 5/8" | 1/2" | 6 1/2" | 1/2" | 3/8" |
| x53 | 10" | 5/8" | 1/2" | 6 1/2" | 1/2" | 3/8" |
| HP 10x57 | 8" | 3/4" | 9/16" | 5 1/4" | 1/2" | 3/8" |
| x42 | 8" | 5/8" | 9/16" | 5 1/4" | 1/2" | 3/8" |
| HP 8x36 | 7" | 5/8" | 7/16" | 4 1/4" | 1/2" | 3/8" |



ELEVATION



DETAIL A

SHOE ATTACHMENT

Note:
The steel H-piles shall be according to AASHTO M270 Grade 50.

F-HP 1-1-2020

| | | | | | | | | | | |
|------------------------------------------------------------------------------------------------------------------------------------------------------------------------------|-----------------------|-------------------|-----------|--------------------------------------------------------------|---------------------------------------------------|------------------------|----------------|----------------------------|--------------|-----------|
| FILE NAME = 170694-shl-brldge.dgn | USER NAME = rmosck | DESIGNED - J.W.F. | REVISED - | STATE OF ILLINOIS WHITE COUNTY HIGHWAY DEPARTMENT | HP PILE DETAILS STRUCTURE NO. 097-3295 | T.R. | SECTION | COUNTY | TOTAL SHEETS | SHEET NO. |
| HAMPTON, LENZINI AND RENWICK, INC. 3035 STEVENSON DRIVE, SUITE 201 SPRINGFIELD, ILLINOIS 62703 ILLINOIS PROFESSIONAL DESIGN FIRM L.S./P.E./S.E. CORP. 184.000959 | PLOT SCALE = | CHECKED - S.W.M. | REVISED - | | | 380 | 13-10133-00-BR | WHITE | 22 | 11 |
| | PLOT DATE = 2/12/2020 | DRAWN - M.M.P. | REVISED - | | | PHILLIPS ROAD DISTRICT | | CONTRACT NO. 99644 | | |
| | | CHECKED - S.W.M. | REVISED - | | | ILLINOIS | | FED. AID PROJECT XVWR(269) | | |

SHEET NO. 7 OF 9 SHEETS

| | | | | | | | | | | | |
|--------------------------------------------------------------------------------------------------------------------------------------------------------------------------------------------------------------------------------------------|--|---|------|----|-----------------------|----------------------------|-----------|----|------|-----|-----|
| HOLCOMB FOUNDATION ENGINEERING INC. 393 Wood Road 618-529-5262 Carbondale, Il. 62901 618-457-8991 fax Page 1 of 2 | | | | | | | | | | | |
| Bridge Foundation Boring Log Project: H-17172 Bridge Co Road 1750 E over Crooked Creek Date: 9/5/2017 Section: 13-10133-00-BR Station _____ Bored by: B. Schwartz Structure: _____ Checked By: T. Holcomb County: White | | | | | | | | | | | |
| Boring No. 2 | | | | | | Surface Water Elev. _____ | Elevation | N | Qu | tsf | w % |
| Station: _____ | | | | | | Ground Water Elev. _____ | | | | | |
| Offset: _____ | | | | | | During Drilling 394.9 91.0 | | | | | |
| | | | | | | Upon Completion 385.4 81.5 | | | | | |
| Ground Surface 403.4 99.5 0 | | | | | | Gray Sandy CLAY (A-6) | | | | | |
| 3" Asphalt over 13" Crushed Stone | | | | | | | | | | | |
| Gray Mottled Brown Silty CLAY (A-6) | | 5 | 1.5B | 20 | | | -25 | 6 | 0.5S | 22 | |
| | | | | | 403.8 73.5 | | | | | | |
| | | | | | Gray Sandy SILT (A-4) | | | | | | |
| | | 4 | 1.2B | 21 | | | -5 | 17 | 0.5S | 25 | |
| | | | | | 403.8 93.5 | | | | | | |
| Gray Mottled Brown Silty CLAY (A-6) | | 4 | 1.2B | 18 | | | -30 | 33 | 1.5S | 19 | |
| | | | | | | | | | | | |
| | | 3 | 1.7B | 24 | | | -10 | | | | |
| | | | | | 392.4 88.5 | | | | | | |
| Gray Mottled Brown SILT (A-4) | | 2 | 1.5B | 29 | | | -35 | 41 | -- | 10 | |
| | | | | | 369.9 66.0 | | | | | | |
| | | 2 | 0.7B | 27 | | | -15 | | | | |
| | | | | | 387.4 83.5 | | | | | | |
| Gray Sandy CLAY (A-6) | | 0 | 0.4B | 22 | | | -40 | 33 | -- | 14 | |
| | | | | | 364.9 61.0 | | | | | | |
| | | 0 | 0.2B | 23 | | | -20 | | | | |
| | | | | | 382.4 78.5 | | | | | | |
| Gray Mottled Brown Sandy CLAY (A-6) | | 7 | 1.9B | 19 | | | -100 | 3 | -- | 14 | |
| | | | | | 359.9 56.0 | | | | | | |
| | | | | | Brown SANDSTONE | | | | | | |

N = Standard Penetration Test Blows per foot to drive 2" O.D. Split Spoon Sampler 12" with a 140 lbs. hammer falling 30"
 Qu - Unconfined Compressive Strength in tons/sq.ft.
 w - Water Content - percentage of oven dry weight-%
 B = Bulge Failure
 S = Shear Failure
 E = Estimated Value
 P = Penetrometer

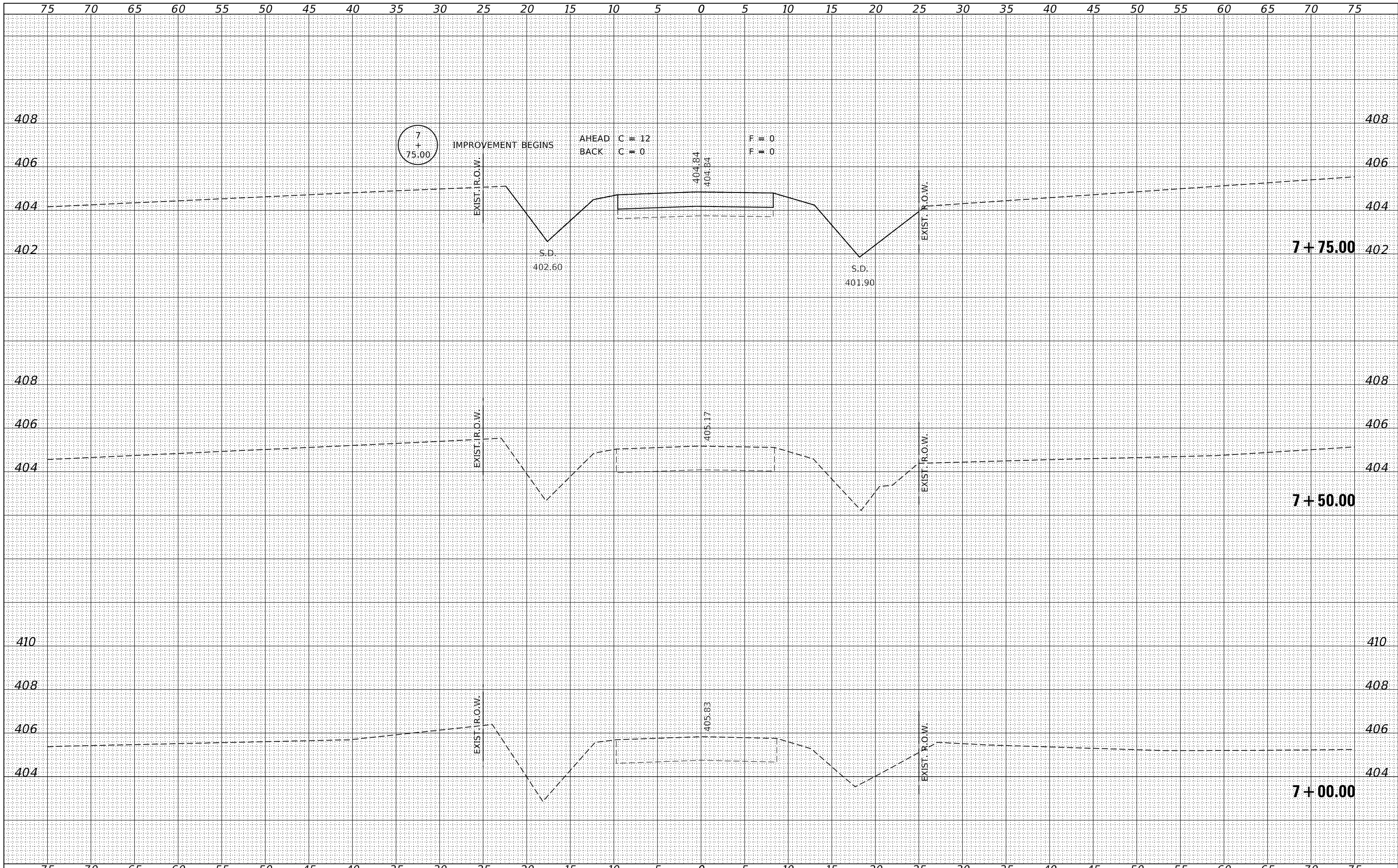
| | | | | | | | | | | | |
|--------------------------------------------------------------------------------------------------------------------------------------------------------------------------------------------------------------------------------------------|--|--|--|--|------------------------|----------------------------|-----------|---|----|-----|-----|
| HOLCOMB FOUNDATION ENGINEERING INC. 393 Wood Road 618-529-5262 Carbondale, Il. 62901 618-457-8991 fax Page 2 of 2 | | | | | | | | | | | |
| Bridge Foundation Boring Log Project: H-17172 Bridge Co Road 1750 E over Crooked Creek Date: 9/5/2017 Section: 13-10133-00-BR Station _____ Bored by: B. Schwartz Structure: _____ Checked By: T. Holcomb County: White | | | | | | | | | | | |
| Boring No. 2 | | | | | | Surface Water Elev. _____ | Elevation | N | Qu | tsf | w % |
| Station: _____ | | | | | | Ground Water Elev. _____ | | | | | |
| Offset: _____ | | | | | | During Drilling 394.9 91.0 | | | | | |
| | | | | | | Upon Completion 385.4 81.5 | | | | | |
| sandstone (continued) | | | | | | | | | | | |
| | | | | | 357.4 53.5 | | | | | | |
| Gray Sandy SHALE | | | | | | | | | | | |
| | | | | | 354.4 50.5 | | | | | | |
| | | | | | End of Boring @ -49.0' | | | | | | |
| | | | | | | | | | | | |
| | | | | | | | | | | | |
| | | | | | | | | | | | |
| | | | | | | | | | | | |
| | | | | | | | | | | | |
| | | | | | | | | | | | |
| | | | | | | | | | | | |
| | | | | | | | | | | | |
| | | | | | | | | | | | |
| | | | | | | | | | | | |
| | | | | | | | | | | | |
| | | | | | | | | | | | |
| | | | | | | | | | | | |
| | | | | | | | | | | | |
| | | | | | | | | | | | |
| | | | | | | | | | | | |

N = Standard Penetration Test Blows per foot to drive 2" O.D. Split Spoon Sampler 12" with a 140 lbs. hammer falling 30"
 Qu - Unconfined Compressive Strength in tons/sq.ft.
 w - Water Content - percentage of oven dry weight-%
 B = Bulge Failure
 S = Shear Failure
 E = Estimated Value
 P = Penetrometer

BORING 2

| | |
|--------------|--|
| DATE | |
| BY | |
| SURVEYED | |
| PLOTTED | |
| TEMPLATE | |
| AREAS | |
| CHECKED | |
| FINAL SURVEY | |
| NOTE BOOK | |
| NO. | |

| | |
|-----------------|--|
| DATE | |
| BY | |
| SURVEYED | |
| PLOTTED | |
| TEMPLATE | |
| AREAS | |
| CHECKED | |
| ORIGINAL SURVEY | |
| NOTE BOOK | |
| NO. | |



FILE NAME = 170694-cht-xssheets.dgn
 DESIGNED - S.A.A.
 DRAWN - T.W.K.
 CHECKED - J.W.F.
 DATE - 02/10/2020

USER NAME = rmosck
 PLOT SCALE = \$Scales
 PLOT DATE = 2/12/2020

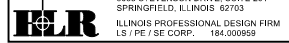
REVISIED -
 REVISIED -
 REVISIED -
 REVISIED -

**STATE OF ILLINOIS
 WHITE COUNTY HIGHWAY DEPARTMENT**

STATION CROSS SECTIONS

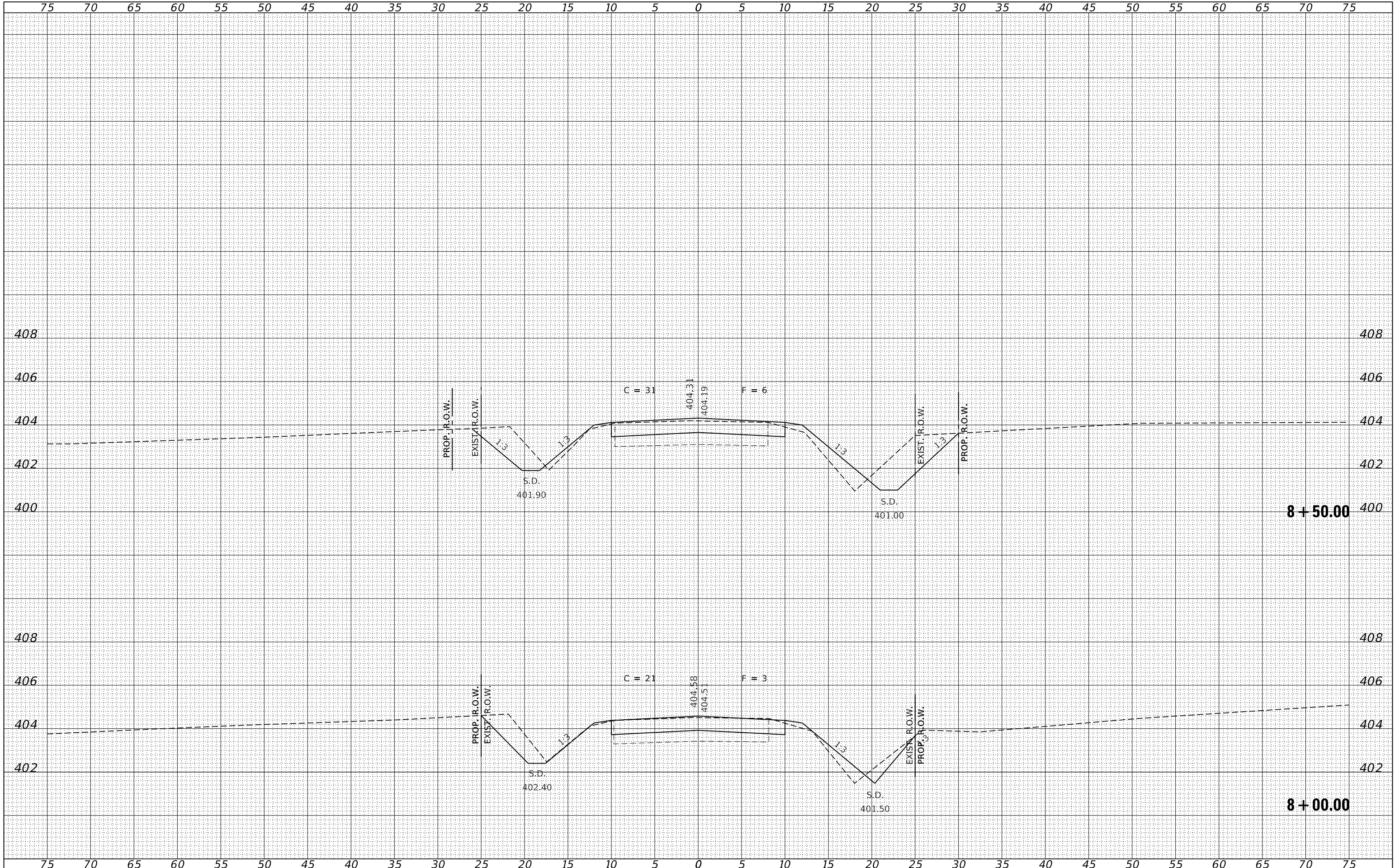
SCALE: 5H:2V SHEET NO. 1 OF 9 SHEETS STA. 7+00.00 TO STA. 7+75.00

| T.R. | SECTION | COUNTY | TOTAL SHEETS | SHEET NO. |
|-------------------------------------|----------------|--------|--------------------|-----------|
| 380 | 13-10133-00-BR | WHITE | 22 | 14 |
| PHILLIPS ROAD DISTRICT | | | CONTRACT NO. 99644 | |
| ILLINOIS FED. AID PROJECT XWVR(269) | | | | |



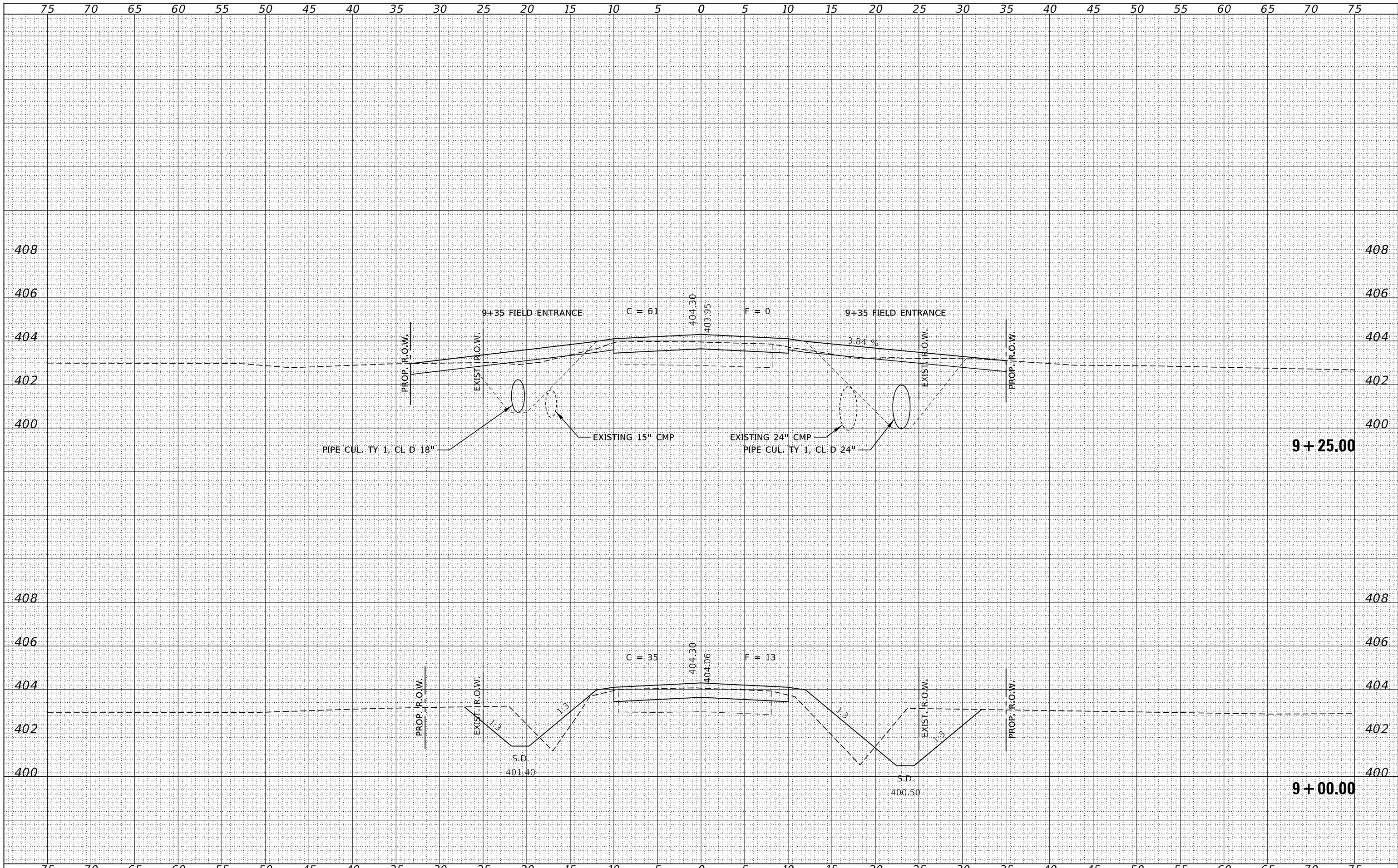
| | |
|--------------|---------------|
| BY | DATE |
| | |
| FINAL SURVEY | SURVEYED |
| NOTE BOOK | PLOTTED |
| NO. | TEMPLATE |
| | AREAS CHECKED |
| | AREAS CHECKED |

| | |
|-----------------|---------------|
| BY | DATE |
| | |
| ORIGINAL SURVEY | SURVEYED |
| NOTE BOOK | PLOTTED |
| NO. | TEMPLATE |
| | AREAS CHECKED |
| | AREAS CHECKED |



| | |
|--------------|----------|
| DATE | |
| BY | |
| FINAL SURVEY | SURVEYED |
| NOTE BOOK | PLOTTED |
| NO. | TEMPLATE |
| | AREAS |
| | CHECKED |

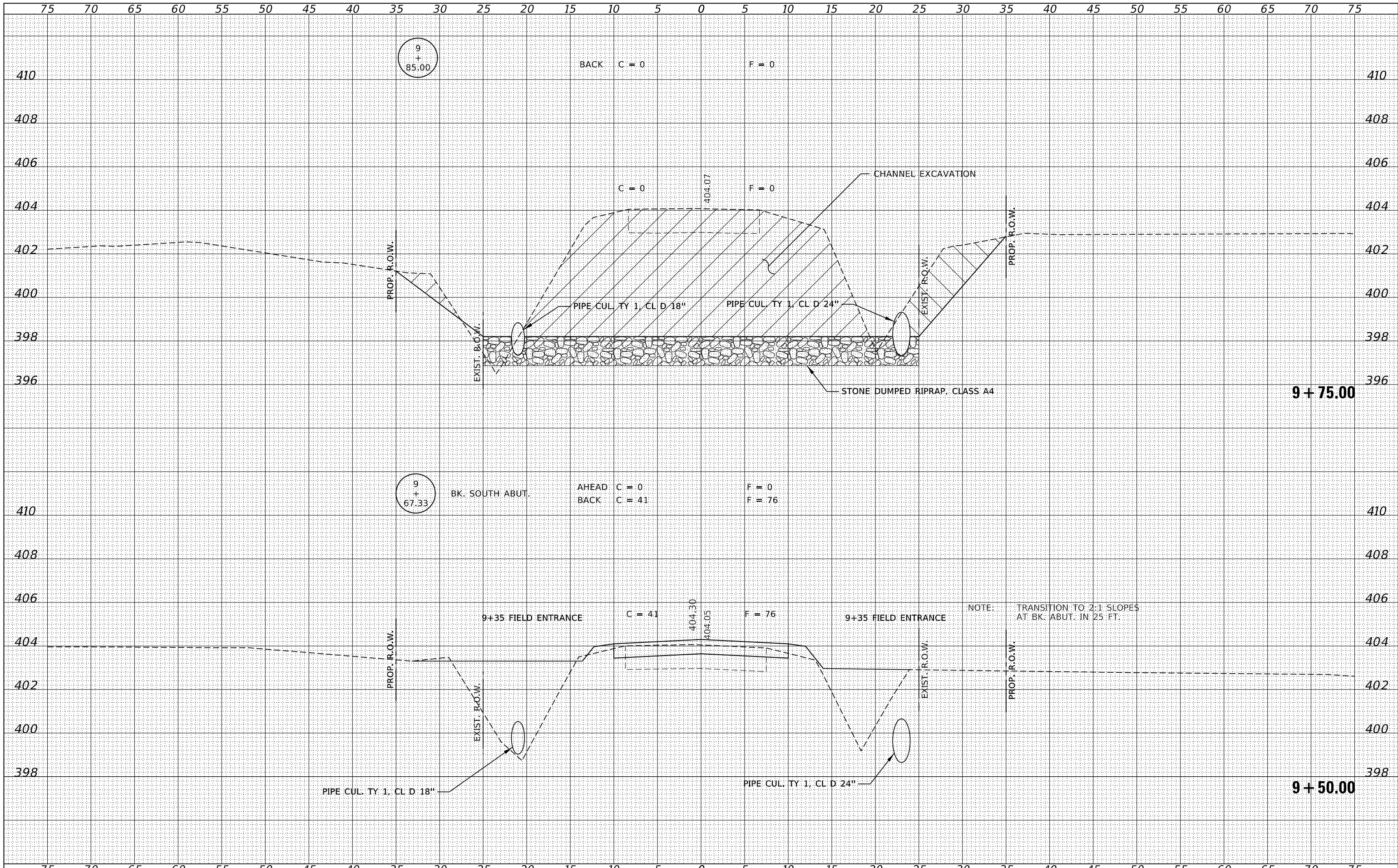
| | |
|-----------------|----------|
| DATE | |
| BY | |
| ORIGINAL SURVEY | SURVEYED |
| NOTE BOOK | PLOTTED |
| NO. | TEMPLATE |
| | AREAS |
| | CHECKED |



| | | | | | | | | | | | | |
|----------------------------------------------------------------------------------------------------------------------------------------------------------------------------------|-------------------------|-------------------|----------|--------------------------------------------------------------------|-------------------------------|------------------|-----------|--------------------|---------|--------|--------------|-----------|
| FILE NAME = 170694-cht-xssheets.dgn | USER NAME = rmosck | DESIGNED - S.A.A. | REVISD - | STATE OF ILLINOIS WHITE COUNTY HIGHWAY DEPARTMENT | STATION CROSS SECTIONS | | | T.R. | SECTION | COUNTY | TOTAL SHEETS | SHEET NO. |
| HAMPTON, LENZINI AND RENWICK, INC. 3885 STEVENSON DRIVE, SUITE 201 SPRINGFIELD, ILLINOIS 62703 ILLINOIS PROFESSIONAL DESIGN FIRM L.S. / P.E. / S.E. CORP. 184.000958 | PLOT SCALE = \$S\$CALES | DRAWN - T.W.K. | REVISD - | | 380 | 13-10133-00-BR | WHITE | 22 | 16 | | | |
| PLOT DATE = 2/12/2020 | DATE - 02/10/2020 | CHECKED - J.W.F. | REVISD - | | PHILLIPS ROAD DISTRICT | | | CONTRACT NO. 99644 | | | | |
| | | DATE - 02/10/2020 | REVISD - | | ILLINOIS | FED. AID PROJECT | XVWR(269) | | | | | |

| | |
|---------------|--|
| DATE | |
| BY | |
| FINAL SURVEY | |
| SURVEYED | |
| PLOTTED | |
| TEMPLATE | |
| NOTE BOOK | |
| AREAS CHECKED | |
| AREAS CHECKED | |

| | |
|-----------------|--|
| DATE | |
| BY | |
| ORIGINAL SURVEY | |
| SURVEYED | |
| PLOTTED | |
| TEMPLATE | |
| NOTE BOOK | |
| AREAS CHECKED | |
| AREAS CHECKED | |



FILE NAME = 170694-cht-xssheets.dgn
 USER NAME = rmosick
 DESIGNED - S.A.A.
 DRAWN - T.W.K.
 CHECKED - J.W.F.
 DATE - 02/10/2020
 PLOT SCALE = \$Scales
 PLOT DATE = 2/12/2020

REVISIED -
 REVISIED -
 REVISIED -
 REVISIED -

STATE OF ILLINOIS
 WHITE COUNTY HIGHWAY DEPARTMENT

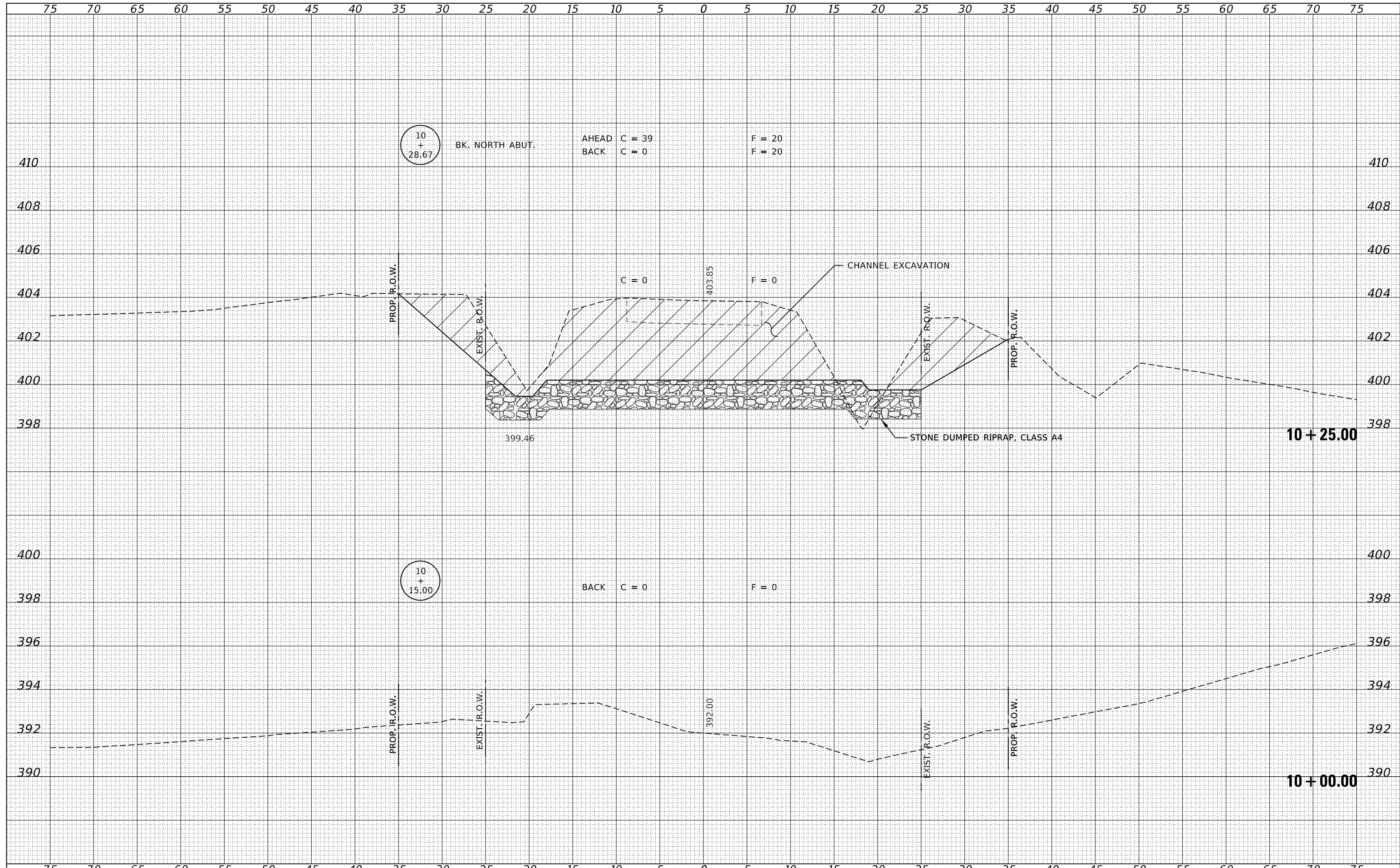
STATION CROSS SECTIONS

SCALE: 5H:2V
 SHEET NO. 4 OF 9 SHEETS
 STA. 9+50.00 TO STA. 9+75.00

| T.R. | SECTION | COUNTY | TOTAL SHEETS | SHEET NO. |
|-------------------------------------|----------------|--------|--------------------|-----------|
| 380 | 13-10133-00-BR | WHITE | 22 | 17 |
| PHILLIPS ROAD DISTRICT | | | CONTRACT NO. 99644 | |
| ILLINOIS FED. AID PROJECT XWVR(269) | | | | |

| | |
|--------------|---------------|
| DATE | |
| BY | |
| FINAL SURVEY | SURVEYED |
| NOTE BOOK | PLOTTED |
| NO. | TEMPLATE |
| | AREAS CHECKED |

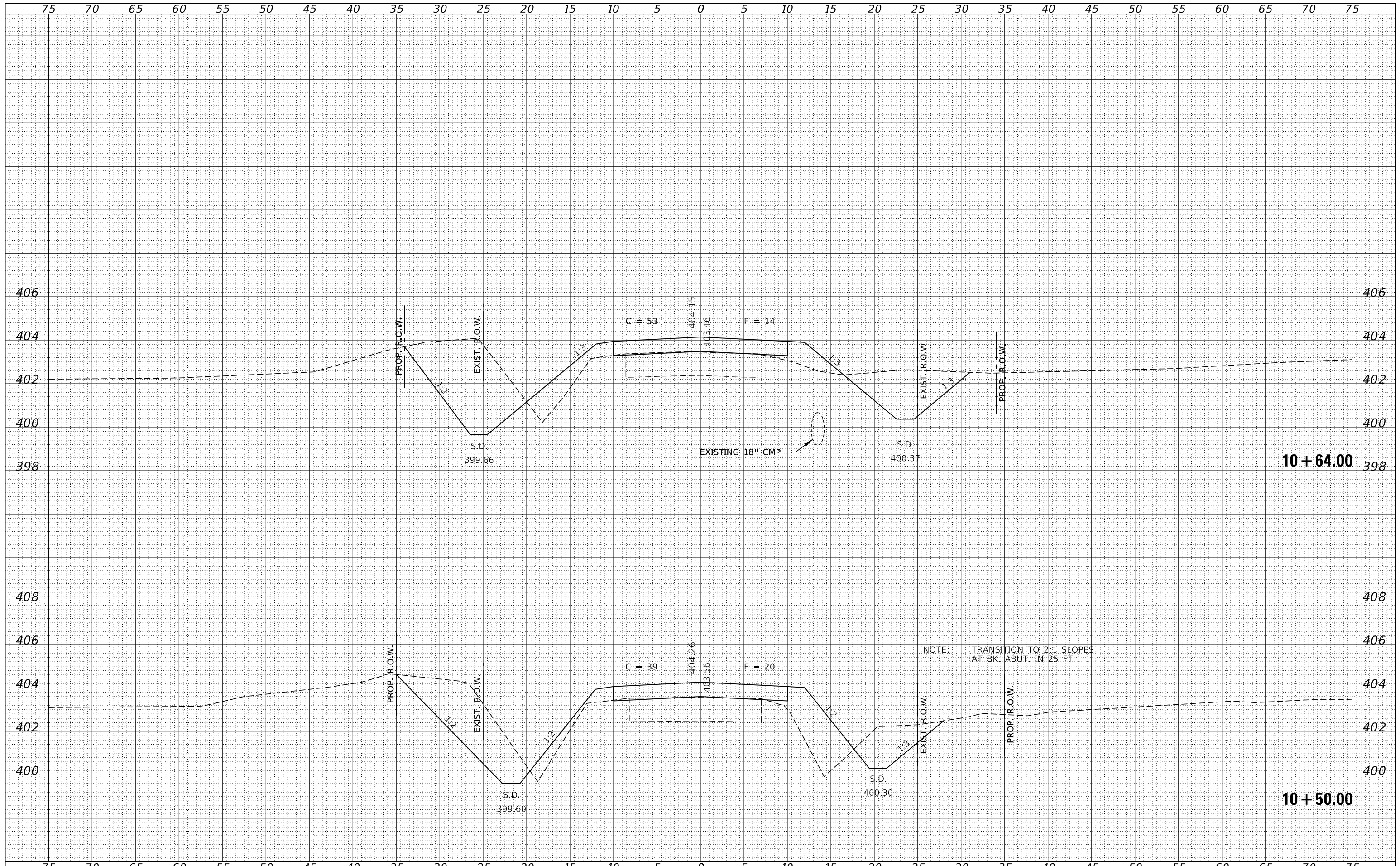
| | |
|-----------------|---------------|
| DATE | |
| BY | |
| ORIGINAL SURVEY | SURVEYED |
| NOTE BOOK | PLOTTED |
| NO. | TEMPLATE |
| | AREAS CHECKED |



| | | | | | | | | | | | | |
|----------------------------------------------------------------------------------------------------------------------------------------------------------------------------|-----------------------|-------------------|-----------|--------------------------------------------------------------------|-------------------------------|-------------------------|--------------------------------|-------------------------------------|---------|--------|--------------|-----------|
| FILE NAME = 170694-cht-xssheets.dgn | USER NAME = rmosck | DESIGNED - S.A.A. | REVISED - | STATE OF ILLINOIS WHITE COUNTY HIGHWAY DEPARTMENT | STATION CROSS SECTIONS | | | T.R. | SECTION | COUNTY | TOTAL SHEETS | SHEET NO. |
| HAMPTON, LENZINI AND RENWICK, INC. 3885 STEVENSON DRIVE, SUITE 201 SPRINGFIELD, ILLINOIS 62703 ILLINOIS PROFESSIONAL DESIGN FIRM LS / PE / SE CORP. 184.009958 | PLOT SCALE = \$SCALES | DRAWN - T.W.K. | REVISED - | | 380 | 13-10133-00-BR | WHITE | 22 | 18 | | | |
| PLOT DATE = 2/12/2020 | DATE - 02/10/2020 | CHECKED - J.W.F. | REVISED - | | PHILLIPS ROAD DISTRICT | | | CONTRACT NO. 99644 | | | | |
| | | DATE - 02/10/2020 | REVISED - | | SCALE: 5H:2V | SHEET NO. 5 OF 9 SHEETS | STA. 10+00.00 TO STA. 10+25.00 | ILLINOIS FED. AID PROJECT XWVR(269) | | | | |

| | |
|----|------|
| BY | DATE |
| | |
| | |
| | |
| | |
| | |
| | |
| | |
| | |
| | |
| | |

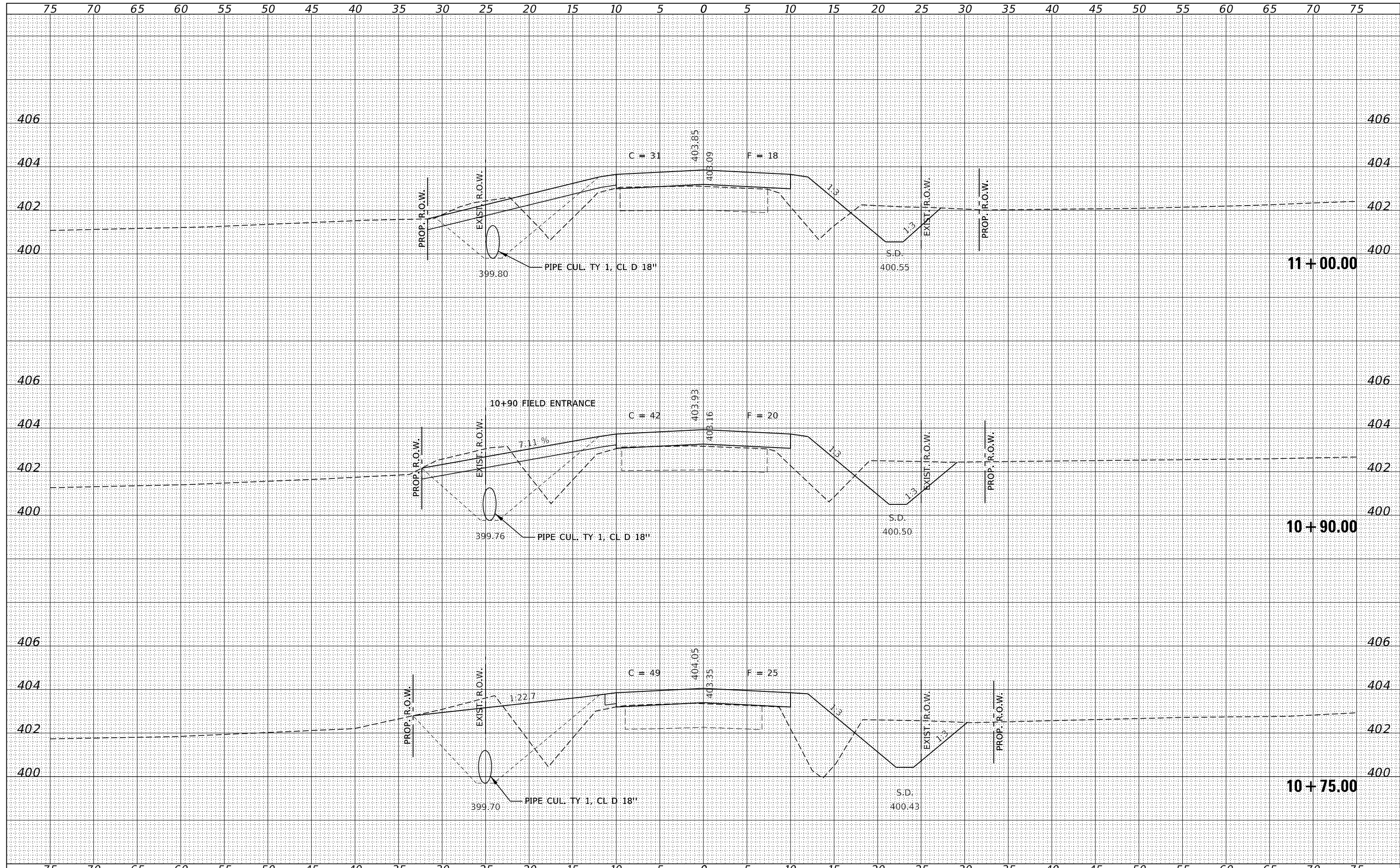
| | |
|----|------|
| BY | DATE |
| | |
| | |
| | |
| | |
| | |
| | |
| | |
| | |
| | |
| | |



| | | | | | | | | | | | | |
|----------------------------------------------------------------------------------------------------------------------------------------------------------------------------------|--------------------|-------------------|-----------|--------------------------------------------------------------|--------------------------------|--|----------------------------|---------|--------------------|--------------|-----------|----|
| FILE NAME = 170694-cht-xssheets.dgn | USER NAME = rmosck | DESIGNED - S.A.A. | REVISED - | STATE OF ILLINOIS WHITE COUNTY HIGHWAY DEPARTMENT | STATION CROSS SECTIONS | | T.R. | SECTION | COUNTY | TOTAL SHEETS | SHEET NO. | |
| HAMPSON, LENZINI AND RENWICK, INC. 3885 STEVENSON DRIVE, SUITE 201 SPRINGFIELD, ILLINOIS 62703 ILLINOIS PROFESSIONAL DESIGN FIRM L.S. / P.E. / S.E. CORP. 184.000958 | | DRAWN - T.W.K. | REVISED - | | SCALE: 5H:2V | | SHEET NO. 6 OF 9 SHEETS | 380 | 13-10133-00-BR | WHITE | 22 | 19 |
| PLOT SCALE = \$SCALES | | CHECKED - J.W.F. | REVISED - | | STA. 10+50.00 TO STA. 10+64.00 | | PHILLIPS ROAD DISTRICT | | CONTRACT NO. 99644 | | | |
| PLOT DATE = 2/12/2020 | | DATE - 02/10/2020 | REVISED - | | ILLINOIS | | FED. AID PROJECT XWVR(269) | | | | | |

| | |
|--------------|--|
| DATE | |
| BY | |
| SURVEYED | |
| PLOTTED | |
| TEMPLATE | |
| AREAS | |
| CHECKED | |
| FINAL SURVEY | |
| NOTE BOOK | |
| NO. | |

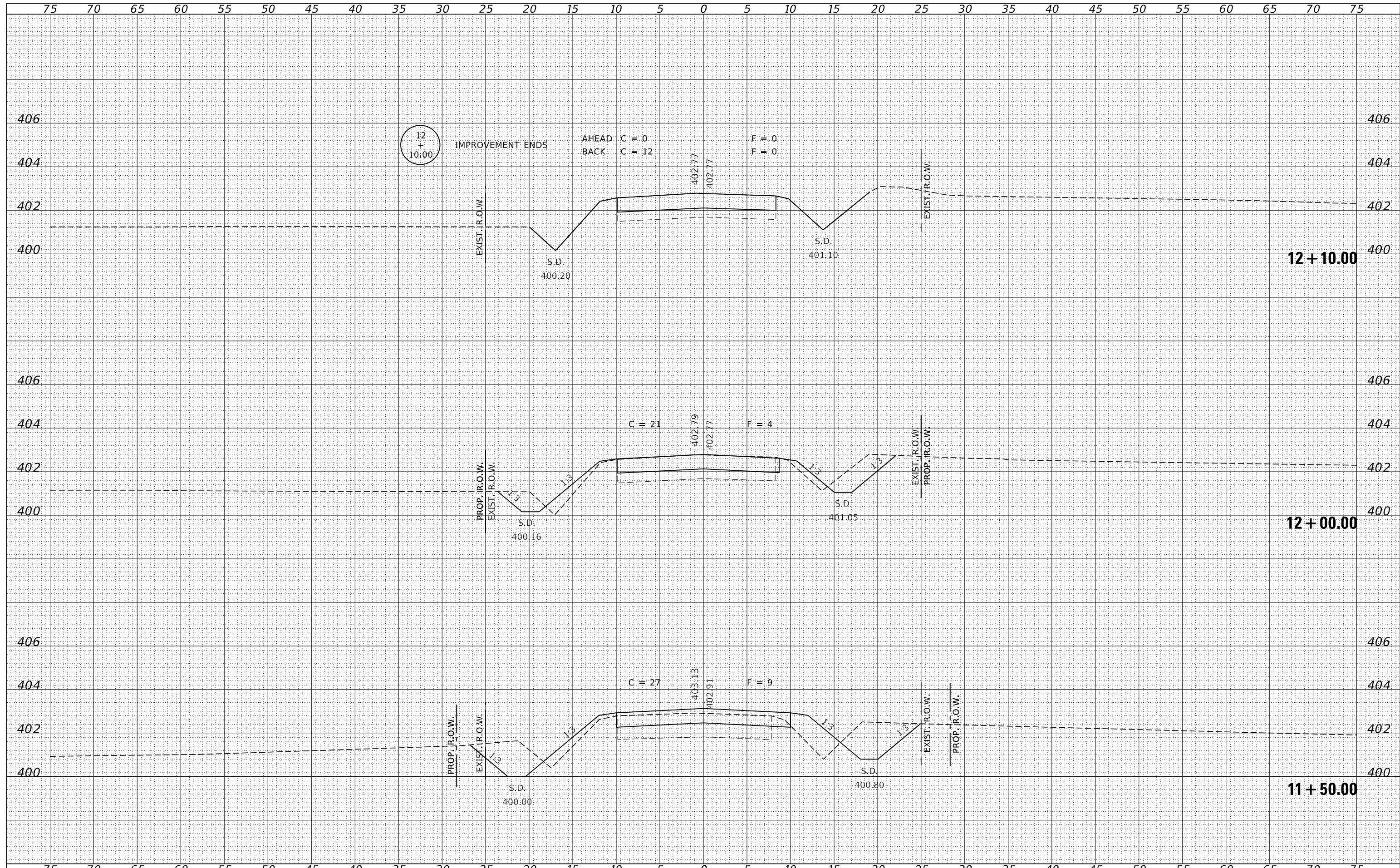
| | |
|-----------------|--|
| DATE | |
| BY | |
| SURVEYED | |
| PLOTTED | |
| TEMPLATE | |
| AREAS | |
| CHECKED | |
| ORIGINAL SURVEY | |
| NOTE BOOK | |
| NO. | |



| | | | | | | | | | | | |
|----------------------------------------------------------------------------------------------------------------------------------------------------------------------------------|-----------------------|-------------------|-----------|--------------------------------------------------------------------|-------------------------------|-------------------------|--------------------------------|---------|-------------------------------------|--------------|-----------|
| FILE NAME = 170694-cht-xssheets.dgn | USER NAME = rmosck | DESIGNED - S.A.A. | REVISED - | STATE OF ILLINOIS WHITE COUNTY HIGHWAY DEPARTMENT | STATION CROSS SECTIONS | | T.R. | SECTION | COUNTY | TOTAL SHEETS | SHEET NO. |
| HAMPTON, LENZINI AND RENWICK, INC. 3885 STEVENSON DRIVE, SUITE 201 SPRINGFIELD, ILLINOIS 62703 ILLINOIS PROFESSIONAL DESIGN FIRM L.S. / P.E. / S.E. CORP. 184.009958 | PLOT SCALE = \$SCALES | DRAWN - T.W.K. | REVISED - | | 380 | 13-10133-00-BR | WHITE | 22 | 20 | | |
| PLOT DATE = 2/12/2020 | DATE = 02/10/2020 | CHECKED - J.W.F. | REVISED - | | PHILLIPS ROAD DISTRICT | | CONTRACT NO. 99644 | | ILLINOIS FED. AID PROJECT XVWR(269) | | |
| | | DATE = 02/10/2020 | REVISED - | | SCALE: 5H:2V | SHEET NO. 7 OF 9 SHEETS | STA. 10+75.00 TO STA. 11+00.00 | | | | |

| | |
|--------------|--|
| DATE | |
| BY | |
| SURVEYED | |
| PLOTTED | |
| TEMPLATE | |
| AREAS | |
| CHECKED | |
| FINAL SURVEY | |
| NOTE BOOK | |
| NO. | |

| | |
|-----------------|--|
| DATE | |
| BY | |
| SURVEYED | |
| PLOTTED | |
| TEMPLATE | |
| AREAS | |
| CHECKED | |
| ORIGINAL SURVEY | |
| NOTE BOOK | |
| NO. | |



| | | | | | | | | | | | |
|----------------------------------------------------------------------------------------------------------------------------------------------------------------------------------|-----------------------|-------------------|-----------|--------------------------------------------------------------------|--------------------------------|----------------|-------------------------------------|---------|--------------------|--------------|-----------|
| FILE NAME = 170694-cht-xssheets.dgn | USER NAME = rmosck | DESIGNED - S.A.A. | REVISED - | STATE OF ILLINOIS WHITE COUNTY HIGHWAY DEPARTMENT | STATION CROSS SECTIONS | | T.R. | SECTION | COUNTY | TOTAL SHEETS | SHEET NO. |
| HAMPTON, LENZINI AND RENWICK, INC. 3885 STEVENSON DRIVE, SUITE 201 SPRINGFIELD, ILLINOIS 62703 ILLINOIS PROFESSIONAL DESIGN FIRM L.S. / P.E. / S.E. CORP. 184.009958 | PLOT SCALE = \$SCALES | DRAWN - T.W.K. | REVISED - | | 380 | 13-10133-00-BR | WHITE | 22 | 21 | | |
| PLOT DATE = 2/12/2020 | DATE = 02/10/2020 | CHECKED - J.W.F. | REVISED - | | SCALE: 5H:2V | | SHEET NO. 8 OF 9 SHEETS | | CONTRACT NO. 99644 | | |
| | | DATE = 02/10/2020 | REVISED - | | STA. 11+50.00 TO STA. 12+10.00 | | ILLINOIS FED. AID PROJECT XWVR(269) | | | | |

