

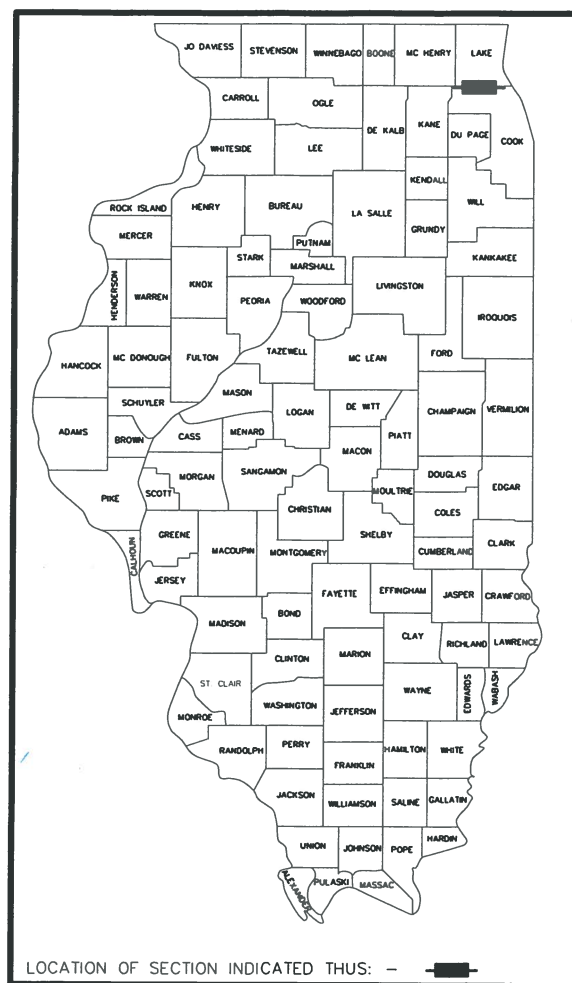
06-12-2020 LETTING ITEM 164

FOR INDEX OF SHEETS, SEE SHEET NO. 2

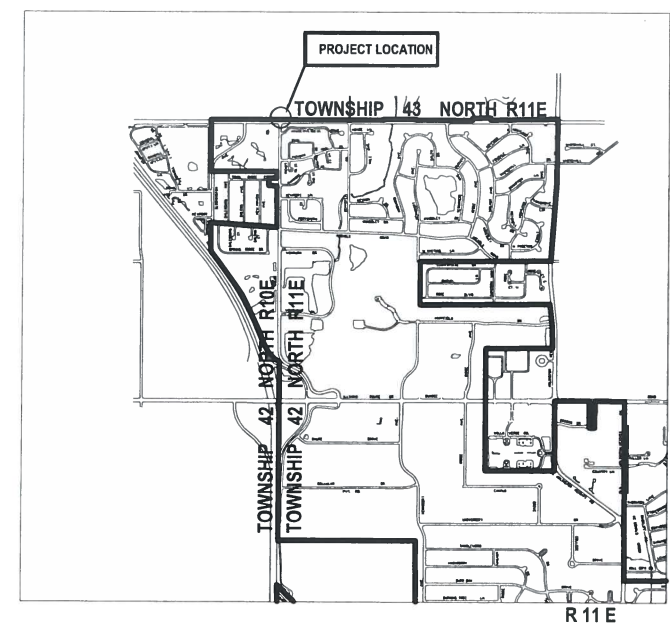
FOR LIST OF HIGHWAY STANDARDS, SEE SHEET NO. 2

F.A.P. RTE.	SECTION	COUNTY	SHEET NO.
379	19-00212-00-BT	COOK	1
FED. ROAD DIST. NO.		ILLINOIS	FED. AID PROJECT

STATE OF ILLINOIS
DEPARTMENT OF TRANSPORTATION
DIVISION OF HIGHWAYS
**PLANS FOR PROPOSED
FEDERAL AID HIGHWAY**
BUFFALO CREEK MULTI-USE TRAIL EXTENSION
AT FAP ROUTE 379 LAKE COOK ROAD AT WILKE ROAD
SECTION 19-00212-00-BT
PROJECT HW18(056)
VILLAGE OF ARLINGTON HEIGHTS
WHEELING TOWNSHIP
COOK COUNTY
C-91-179-20



LOCATION MAP
NOT TO SCALE
TOWNSHIP 42 N RANGE 11 E WHEELING TOWNSHIP



PROJECT LENGTH

NET LENGTH = 0.1 MILES
GROSS LENGTH = 0.1 MILES

TRAFFIC DATA

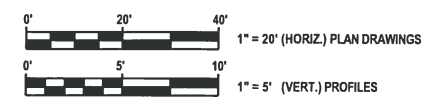
LAKE COOK ROAD	41,600 ADT
WILKE ROAD	11,500 ADT
BIKE PATH	<100 ADT

POSTED SPEED

LAKE COOK ROAD	45 MPH
WILKE ROAD	30 MPH
BIKE PATH	NOT POSTED

CLASSIFICATION

LAKE COOK ROAD	URBAN STREET
WILKE ROAD	URBAN STREET



FULL SIZE PLANS HAVE BEEN PREPARED USING STANDARD ENGINEERING SCALES. REDUCED SIZED PLANS WILL NOT CONFORM TO STANDARD SCALES, IN MAKING MEASUREMENTS ON REDUCED PLANS USE THE GRAPHIC SCALES ON DRAWINGS

J.U.L.I.E.
JOINT UTILITY LOCATION INFORMATION FOR EXCAVATION
1-800-892-0123

CONTRACT NO. 61G52



PROFESSIONAL ENGINEER'S SIGN & SEAL
Briget F. Schwab
BRIGET SCHWAB, P.E.
CIVIL ENGINEER
VILLAGE OF ARLINGTON HEIGHTS
LICENSES EXPIRES 11-30-21

STATE OF ILLINOIS
DEPARTMENT OF TRANSPORTATION
APPROVED *FEB 20, 2020*
Michael J. Ryan
VILLAGE ENGINEER
VILLAGE OF ARLINGTON HEIGHTS, ILLINOIS

APPROVED *February 21, 2020*
Samuel P. ...
DIRECTOR OF PLANNING AND LAND PRESERVATION
LAKE COUNTY FOREST PRESERVES

PASSED *3-16-2020*
Chris ...
DISTRICT ONE ENGINEER OF LOCAL ROADS AND STREETS
RELEASING FOR BID
BASED ON LIMITED REVIEW *March 17, 2020*
Anthony A. ...
REGIONAL ENGINEER

**PRINTED BY THE AUTHORITY
OF THE STATE OF ILLINOIS**

FEDERAL AID PROGRAM ENGINEER: CARMEN E RAMOS, P.E. SCHAUMBURG, ILLINOIS
DRAWING NAME: I:\Users\carmenramos\OneDrive\Engineering\61G52\61G52-11.dwg

INDEX OF SHEETS	
Sheet Number	Sheet Title
1	TITLE SHEET
2	INDEX OF SHEETS & HIGHWAY STANDARDS
3	GENERAL NOTES
4	SUMMARY OF QUANTITIES
5	SUMMARY OF QUANTITIES
6	SUMMARY OF QUANTITIES
7	TYPICAL SECTION
8	ALIGNMENT - TIES AND BENCHMARKS
9	LAKE COUNTY FOREST PRESERVE GRADING PLAN & PROFILE
10	LAKE COUNTY FOREST PRESERVE LANDSCAPE AND EROSION CONTROL
11	COOK COUNTY INTERSECTION IMPROVEMENT PLAN
12	COOK COUNTY ADA CROSS WALK
13	COOK COUNTY ADA CROSS WALK
14	COOK COUNTY TRAFFIC SIGNAL SHEET
15	COOK COUNTY SIGNAL CABLE PLAN
16	DISTRICT ONE STANDARD TRAFFIC SIGNAL DESIGN DETAILS
17	DISTRICT ONE STANDARD TRAFFIC SIGNAL DESIGN DETAILS
18	DISTRICT ONE STANDARD TRAFFIC SIGNAL DESIGN DETAILS
19	DISTRICT ONE STANDARD TRAFFIC SIGNAL DESIGN DETAILS
20	DISTRICT ONE STANDARD TRAFFIC SIGNAL DESIGN DETAILS
21	DISTRICT ONE STANDARD TRAFFIC SIGNAL DESIGN DETAILS
22	DISTRICT ONE STANDARD TRAFFIC SIGNAL DESIGN DETAILS
23	DISTRICT ONE TRAFFIC CONTROL DETAIL
24	DISTRICT ONE TRAFFIC CONTROL DETAIL
25	DISTRICT ONE TRAFFIC CONTROL DETAIL
26	LAKE COUNTY STORMWATER COMMISSION DETAILS
27	LAKE COUNTY FOREST PRESERVE CROSS SECTION SHEET
28	LAKE COUNTY FOREST PRESERVE CROSS SECTION SHEET
29	LAKE COUNTY FOREST PRESERVE CROSS SECTION SHEET

HIGHWAY STANDARDS

- 000001-07 STANDARD SYMBOLS, ABBREVIATION, & PATTERNS
- 280001-07 TEMPORARY EROSION CONTROL SYSTEMS
- 424001-11 PERPENDICULAR CURB RAMPS FOR SIDEWALKS
- 424011-04 CORNER PARALLEL CURB RAMPS FOR SIDEWALKS
- 424016-05 MID-BLOCK CURB RAMPS FOR SIDEWALKS
- 424021-05 DEPRESSED CORNER FOR SIDEWALKS
- 542401-03 METAL FLARED END SECTION FOR PIPE CULVERTS
- 606001-07 CONCRETE CURB TYPE B AND COMBINATION CONCRETE CURB AND GUTTER
- 701101-05 OFF-RD OPERATIONS, MULTI LANE, 15' (4.5m) TO 24" (600mm) FROM PAVEMENT EDGE
- 701106-02 OFF-RD OPERATIONS, MULTILANE, MORE THAN 15' (4.5m) AWAY
- 701426-09 LANE CLOSURES, MULTILANE INTERMITTENT OR MOVING OPERATION FOR SPEED >45 MPH
- 701427-05 LANE CLOSURES, MULTILANE INTERMITTENT OR MOVING OPERATION FOR SPEEDS <40 MPH
- 701701-10 URBAN LANE CLOSURE, MULTILANE INTERSECTION
- 701801-06 SIDEWALK, CORNER OR CROSSWALK CLOSURE
- 701901-08 TRAFFIC CONTROL DEVICES
- 720001-01 SIGN PANEL MOUNTING DETAILS
- 720006-04 SIGN PANEL ERECTION DETAILS
- 720011-01 METAL POSTS FOR SIGNS, MARKERS & DELIVERIES
- 728001-01 TELESCOPING STEEL SIGN SUPPORT
- 880006-01 TRAFFIC SIGNAL MOUNTING DEAILS

DISTRICT ONE TRAFFIC CONTROL STANDARDS

- TC-10 TRAFFIC CONTROL AND PROTECTION FOR SIDE ROADS, INTERSECTIONS, AND DRIVEWAYS
- TC-13 DISTRICT ONE TYPICAL PAVEMENT MARKINGS
- TC-16 SHORT TERM PAVEMENT MARKING LETTERS AND SYMBOLS

DATE	
BY	
DESIGNED	
CHECKED	
IN CHARGE	
STRUCTURE	
NOTATIONS	
CHKD	
PLAN	
NOTE BOOK	
NO.	

DATE	
BY	
DESIGNED	
CHECKED	
IN CHARGE	
STRUCTURE	
NOTATIONS	
CHKD	
PROFILE	
NOTE BOOK	
NO.	

T:\Bicycle Advisory Commission\QMAO\FY-2008\

GENERAL NOTES

ALL CONSTRUCTION SHALL BE IN ACCORDANCE WITH THE "STANDARD SPECIFICATIONS FOR ROAD AND BRIDGE CONSTRUCTION" (HEREIN REFERRED TO AS STANDARD SPECIFICATIONS), ADOPTED APRIL 1, 2016; THE "SUPPLEMENTAL SPECIFICATIONS AND RECURRING SPECIAL PROVISIONS", ADOPTED JANUARY 1, 2020; THE LATEST EDITION OF THE "ILLINOIS MANUAL ON UNIFORM TRAFFIC CONTROL DEVICES FOR STREET AND HIGHWAYS" (MUTCD); THE STANDARD SPECIFICATIONS FOR WATER AND SEWER MAIN CONSTRUCTION IN ILLINOIS; THE "STANDARD SPECIFICATIONS FOR TRAFFIC CONTROL ITEMS"; AND THE "MANUAL OF TEST PROCEDURES FOR MATERIALS".

THE CONTRACTOR SHALL NOTIFY THE ENGINEER (847) 368-5250 72 HOURS PRIOR TO THE COMMENCEMENT OF WORK.

THE CONTRACTOR SHALL NOTIFY AS NECESSARY, ALL TESTING AGENCIES A MINIMUM OF 24 HOURS IN ADVANCE OF CONSTRUCTION. FAILURE OF THE CONTRACTOR TO ALLOW PROPER NOTIFICATION TIME WHICH RESULTS IN TESTING COMPANIES BEING UNABLE TO VISIT THE SITE AND PERFORM TESTING WILL CAUSE THE CONTRACTOR TO SUSPEND OPERATIONS TO BE TESTED UNTIL TESTING AGENCY CAN SCHEDULE TESTING OPERATIONS. COSTS OF SUSPENSION OF WORK WILL BE ABSORBED BY THE CONTRACTOR.

ALL ELEVATIONS SHOWN ON THESE PLANS ARE ON USGS DATUM.

WHERE SECTION OR SUBSECTION MONUMENTS ARE ENCOUNTERED, THE ENGINEER SHALL BE NOTIFIED BEFORE SUCH MONUMENTS ARE REMOVED. THE CONTRACTOR SHALL CAREFULLY PRESERVE ALL PROPERTY MARKERS AND MONUMENTS UNTIL THE OWNER, AND AUTHORIZED SURVEYOR OR AGENT HAS WITNESSED OR OTHERWISE REFERENCED THEIR LOCATION.

IT SHALL BE THE CONTRACTOR'S RESPONSIBILITY TO VERIFY ALL DIMENSIONS AND CONDITIONS EXISTING IN THE FIELD PRIOR TO ORDERING MATERIALS AND BEGINNING CONSTRUCTION.

PAY ITEMS IN THE SUMMARY OF QUANTITIES HAVE BEEN ESTIMATED. IF, IN THE ENGINEER'S OPINION, THE WORK IS NOT REQUIRED, THE ITEM WILL BE DEDUCTED FROM THE CONTRACT AND NO ADDITIONAL COMPENSATION WILL BE ALLOWED. PAYMENT WILL BE MADE ONLY FOR THE ACTUAL WORK COMPLETED.

CONSTRUCTION ACTIVITIES MAY OCCUR BETWEEN 7:00AM AND 5:00PM MONDAY THROUGH FRIDAY AND 8:00AM TO 5:00PM ON SATURDAYS. CONSTRUCTION ACTIVITIES ON SUNDAY ARE PROHIBITED. NO WORK WILL BE PERFORMED ON HOLIDAYS OBSERVED IN ILLINOIS. CONSTRUCTION ACTIVITIES ARE IDENTIFIED AS THE OPERATION OF HEAVY EQUIPMENT, INCLUDING BUT NOT LIMITED TO THE WARMING UP OF ANY PIECE OF EQUIPMENT OR TURNING ON ENGINES.

MATERIALS RESULTING FROM THE REMOVAL OF PAVEMENT, DRIVEWAYS, HMA SURFACE, ETC. SHALL BE REMOVED AT THE END OF EACH DAY TO AN APPROVED SITE.

MATERIAL AND EQUIPMENT MUST BE STORED IN AN AREA APPROVED BY THE ENGINEER.

ADDITIONAL AREAS USED FOR STORAGE MUST BE REVIEWED BY THE ENGINEER PRIOR TO USE. ALL AREAS USED SHALL BE RESTORED TO ORIGINAL CONDITION AND TO THE SATISFACTION OF THE ENGINEER.

THE CONTRACTOR SHALL BE RESPONSIBLE FOR ANY DAMAGE OR DESTRUCTION OF PUBLIC OR PRIVATE PROPERTY IN ACCORDANCE WITH THE SPECIAL PROVISIONS AND ARTICLE 107.20 OF THE "STANDARD SPECIFICATIONS", AND SHALL RESTORE SUCH PROPERTY AT HIS OWN EXPENSE.

THE LOCATIONS OF PUBLIC OR PRIVATE UTILITIES SHOWN ON THE PLANS ARE APPROXIMATE AND THE VILLAGE DOES NOT GUARANTEE THEIR ACCURACY, THE CONTRACTOR SHALL HAVE THE RESPECTIVE UTILITY COMPANIES FIELD LOCATE ALL THEIR FACILITIES PRIOR TO BEGINNING CONSTRUCTION. THE CONTRACTOR SHALL ALSO VERIFY THE DEPTHS OF THE EXISTING UTILITIES IF NECESSARY, ANY RELOCATION OR LOWERING OF UTILITIES SHALL BE COORDINATED BY THE CONTRACTOR.

THE CONTRACTOR SHALL BE RESPONSIBLE FOR THE PROTECTION OF ALL UNDERGROUND OR SURFACE UTILITIES EVEN THOUGH THEY MAY NOT BE SHOWN ON THE PLANS; ANY UTILITY THAT IS DAMAGED DURING CONSTRUCTION SHALL BE REPAIRED OR REPLACED TO THE SATISFACTION OF THE ENGINEER.

COORDINATION OF ALL UTILITY WORK INVOLVED IN THE CONSTRUCTION AREA WILL BE DISCUSSED AT A PRE-CONSTRUCTION CONFERENCE. THE CONTRACTOR SHALL USE ALL NECESSARY PRECAUTIONS AND PROTECTIVE MEASURES REQUIRED TO MAINTAIN EXISTING UTILITIES, SEWERS, AND APPURTENANCES THAT MUST BE KEPT IN OPERATION. IN PARTICULAR, THE CONTRACTOR WILL TAKE ADEQUATE MEASURES TO PREVENT UNDERMINING OF UTILITIES AND SEWERS WHICH ARE STILL IN SERVICE.

BEFORE STARTING ANY EXCAVATION, THE CONTRACTOR SHALL CALL "JULIE" AT 1-800-892-0123 FOR FIELD LOCATIONS OF BURIED ELECTRIC, TELEPHONE, GAS AND CABLE TELEVISION FACILITIES IN ACCORDANCE WITH STATE LAW.

EMERGENCY VEHICLE ACCESS MUST BE MAINTAINED DURING CONSTRUCTION.

RUBBER TIRE EQUIPMENT SHALL BE USED DURING TOPSOIL AND SODDING INSTALLATION. CARE SHALL BE TAKEN TO PROTECT THE CONDITION ANY NEW AND EXISTING CONCRETE AND ASPHALT SURFACES. IT IS THE CONTRACTOR'S RESPONSIBILITY TO REMOVE ANY MARKINGS MADE BY EQUIPMENT USED DURING THESE OPERATIONS INCLUDING BUT NOT LIMITED TO RUBBER MARKS AND HEAVY DIRT.

EXCAVATION, SURPLUS, AND WASTE MATERIALS RESULTING FROM SEEDING OPERATIONS SHALL BE IMMEDIATELY LOADED AND HAULED AWAY AND SHALL NOT BE STORED IN THE STREET OR PARKWAY AREA.

EXISTING PAVEMENT AND SIDEWALK TO REMAIN SHALL BE SAWCUT FULL DEPTH TO PROVIDE A NEAT VERTICAL FACE BETWEEN THE PROPOSED AND EXISTING FACES,

REMOVAL AND DISPOSAL OF UNSUITABLE MATERIAL, POROUS GRANULAR EMBANKMENT, FURNISHED EXCAVATION, AND SUBBASE GRANULAR MATERIAL, TYPE B, HAS BEEN PROVIDED FOR SOILS WHICH TEND TO BE UNSUITABLE WHEN WET. THE ACTUAL NEED OR REMOVAL AND REPLACEMENT WILL BE DETERMINED IN THE FIELD AT THE TIME OF CONSTRUCTION BY THE ENGINEER (BY USE OF A CONE PENETROMETER IN CONJUNCTION WITH THE IDOT STABILITY MANUAL AND PROOF ROLLS). NO ADDITIONAL COMPENSATION WILL BE DUE TO THE CONTRACTOR FOR ANY ADDITIONS OR DEDUCTIONS FROM THE CONTRACT AMOUNT. IF NO ADDITIONAL UNSUITABLE SOILS ARE ENCOUNTERED, THEN THE EXCESS QUANTITY SHALL BE DEDUCTED AND NO ADDITIONAL COMPENSATION WILL BE DUE TO THE CONTRACTOR.

THE CONTRACTOR SHALL TAKE APPROPRIATE MEASURES TO CONTROL EROSION THROUGHOUT THE ENTIRE PROJECT. REFERENCE SHOULD BE MADE TO "PROCEDURES AND STANDARDS FOR URBAN SOIL EROSION AND SEDIMENTATION CONTROL" PUBLISHED BY THE NORTHEASTERN ILLINOIS SOIL EROSION AND SEDIMENTATION CONTROL STEERING COMMITTEE, FOR APPROPRIATE EROSION CONTROL MEASURES.

ALL TEMPORARY EROSION AND SEDIMENT CONTROL MEASURES SHALL BE REMOVED WITHIN 30 DAYS AFTER FINAL SITE STABILIZATION IS ACHIEVED OR AFTER THE TEMPORARY MEASURES ARE NO LONGER NEEDED.

ALL TEMPORARY AND PERMANENT EROSION CONTROL MEASURES MUST BE MAINTAINED AND REPAIRED AS NEEDED.

IF DEWATERING SERVICES ARE USED, ADJOINING PROPERTIES AND DISCHARGE LOCATIONS SHALL BE PROTECTED FOR EROSION. DISCHARGES SHALL BE ROUTED THROUGH AN EFFECTIVE SEDIMENT CONTROL MEASURE (e.g. SEDIMENT TRAP, SEDIMENT BASIN, OR OTHER APPROPRIATE MEASURE).

THE EROSION CONTROL MEASURES INDICATED ON THE PLANS ARE THE MINIMUM REQUIREMENTS. ADDITIONAL MEASURES MAY BE REQUIRED AS DIRECTED BY THE ENGINEER OR GOVERNING AGENCY DUE TO UNFORESEEN FIELD CONDITIONS.

THE CONTRACTOR SHALL TAKE APPROPRIATE MEASURES TO CONTROL DUST AT ALL TIMES ALONG THE ENTIRE PROJECT BY MEANS SUCH AS MECHANICAL SWEEPER, WATER TRUCK, OR AS DIRECTED BY THE ENGINEER.

THE CONTRACTOR SHALL CAREFULLY REMOVE AND RE-ERECT ALL SIGNS, POLES AND MAIL BOXES INTERFERING WITH CONSTRUCTION ACTIVITIES.

THE CONTRACTOR SHALL PROTECT ALL SIDEWALKS AND CURB AND GUTTER FROM DAMAGE AND VANDALISM. ANY PROPOSED OR EXISTING SIDEWALK AND CURB AND GUTTER DAMAGED OR VANDALIZED DURING CONSTRUCTION SHALL BE REPAIRED OR REPLACED TO THE SATISFACTION OF THE ENGINEER.

THE CONTRACTOR SHALL MAINTAIN ALL DRAINAGE FACILITIES DURING CONSTRUCTION AND SHALL REPAIR ANY DRAINAGE FACILITIES DAMAGED DURING CONSTRUCTION.

UTILITY SERVICES TO RESIDENTS OR BUSINESSES WHICH ARE INTERRUPTED BY CONSTRUCTION SHALL BE RESTORED AT THE EXPENSE OF THE CONTRACTOR SO THAT NO SERVICE IS INTERRUPTED FOR MORE THAN FOUR (4) HOURS.

THE CONTRACTOR SHALL BE SOLELY RESPONSIBLE FOR THE USE, STORAGE AND TRANSPORTATION OF ANY POTENTIAL CONTAMINANTS DURING THE EXECUTION OF THE CONTRACT. FUELS, OILS, PESTICIDES, CHEMICALS OR ANY OTHER MATERIAL THAT MAY CAUSE HARM TO THE SITE SHALL BE CLEANED, REMOVED AND DISPOSED OF ACCORDING TO LOCAL, STATE AND FEDERAL GUIDELINES. ALL EQUIPMENT AND VEHICLES SHALL BE PROPERLY MAINTAINED TO PREVENT CONTAMINATION AND SHALL BE PROMPTLY REMOVED FROM THE SITE UPON FIRST EVIDENCE OF LEAKAGE OR SPILLS. UNDER NO CIRCUMSTANCES SHALL FUELS OF ANY TYPE BE STORED ON THE SITE.

IF THE CONTRACTOR DOES NOT TAKE SUFFICIENT PRECAUTIONS IN THE OPINION OF THE ENGINEER TO SAFEGUARD THE SITE FROM CONTAMINATION OR ADEQUATELY MITIGATE CONTAMINANT DAMAGE, THE ENGINEER RESERVES THE RIGHT TO STOP THE CONTRACTOR'S WORK WITHOUT EXTENSION TO THE CONTRACT AND REMEDY THE CONTAMINATION BY OTHER MEANS.

COOK COUNTY DEPARTMENT OF TRANSPORTATION AND HIGHWAYS GENERAL NOTES

THE CONTRACTOR SHALL NOTIFY THE COOK COUNTY PERMIT DIVISION, MR. MICHAEL STERR AT (312)-603-1670 AND THE CDDOTH DESIGN ENGINEER AT (312)-603-1730 AT PRIOR TO THE START OF ANY WORK ON THE CONTRACT. A MINIMUM OF FIVE (5) WORKING DAYS ADVANCE NOTICE IS REQUIRED.

COOK COUNTY IS NOT PART OF JULIE FOR LOCATION OF TRAFFIC SIGNAL EQUIPMENT, CONTACT THE MECHANICAL, ELECTRICAL, ARCHITECTURAL AND LANDSCAPING DIVISION AT 312-603-1730 PRIOR TO THE START OF ANY WORK ON THE CONTRACT. A MINIMUM OF FIVE (5) WORKING DAYS ADVANCE NOTICE IS REQUIRED.

DURING CONSTRUCTION IMPROVEMENTS, TWO-WAY TRAFFIC ON LAKE COOK ROAD AND WILKE ROAD MUST BE MAINTAINED AT ALL TIMES. IF ANY ACTIVITY REQUIRES A LANE CLOSURE ON LAKE COOK ROAD THE WORK MUST BE RESTRICTED TO BETWEEN THE HOURS OF 9AM TO 3PM BY FOLLOWING THE APPLICABLE IDOT-DISTRICT 1 TRAFFIC CONTROL STANDARDS FOR DAYTIME OPERATIONS UTILIZING FLAGGERS.

THE CONTRACTOR MUST PROVIDE A MINIMUM OF FIVE WORKING DAYS ADVANCE NOTICE TO THE VILLAGE BEFORE INSTALLATION OF THE NEW CONTROLLER CABINET.

INSTALLATION OF THE NEW CONTROLLER CABINET MUST BE COMPLETED WITHIN ONE WORKING DAY TO MINIMIZE DISRUPTION TO TRAFFIC FLOW.

CARE IS TO BE TAKEN AS NOT TO DAMAGE ANY OF THE EXISTING TRAFFIC SIGNAL CONDUITS, FIBER CABLES AND EQUIPMENT. IF ANY OF THE OTHER TRAFFIC SIGNAL CONDUITS, CABLES AND/OR EQUIPMENT IS DAMAGED, THE CONTRACTOR SHALL REPAIR AND/OR REPLACE THE CONDUITS, CABLES AND/OR EQUIPMENT.

PRIOR TO CONSTRUCTION A MEETING WILL BE HELD AT THE JOB SITE WITH REPRESENTATIVES OF THE COOK COUNTY HIGHWAY DEPARTMENT, TRAFFIC SIGNAL SECTION TO FIELD VERIFY AND TO CONFIRM INSTRUCTIONS FOR REWIRING THE RETROFITTED SIGNAL HEADS.

THE CONTRACTOR WILL BE RESPONSIBLE TO ACQUIRE ALL NECESSARY PERMITS OR BONDS AND TO SATISFY THE REQUIREMENTS OF THE COOK COUNTY HIGHWAY DEPARTMENT AND LAKE COUNTY FOREST PRESERVE DISTRICT.

THE CONTRACTOR SHALL SUBMIT FOUR (4) HARD COPIES AND ONE (1) PDF VERSION OF THE TRAFFIC SIGNAL CUTS PRIOR TO INSTALLATION IN ACCORDANCE WITH THE "TRAFFIC SIGNAL GENERAL WORK" SPECIAL PROVISION.

TRENCH BACKFILL MEETING THE REQUIREMENTS OF ARTICLE 208.02 OF THE IDOT STANDARD SPECIFICATIONS IS REQUIRED FOR ANY OPEN TRENCHES WITHIN THE COUNTY RIGHT-OF-WAY.

LAKE COUNTY STORMWATER MANAGEMENT COMMISSION SOIL EROSION AND SEDIMENT CONTROL CONSTRUCTION NOTES

- A. SEDIMENT CONTROL MEASURES SHALL BE INSTALLED PRIOR TO THE COMMENCEMENT OF HYDROLOGIC DISTURBANCE OF UPLAND AREAS.
- B. FOR THOSE DEVELOPMENTS THAT REQUIRE A DESIGNATED EROSION CONTROL INSPECTOR (DECI), INSPECTIONS AND DOCUMENTATION SHALL BE PERFORMED, AT A MINIMUM:
 - UPON COMPLETION OF SEDIMENT AND RUNOFF CONTROL MEASURES (INCLUDING PERIMETER CONTROLS AND DIVERSIONS), PRIOR TO PROCEEDING WITH ANY OTHER EARTH DISTURBANCE OR GRADING.
 - AFTER EVERY SEVEN (7) CALENDAR DAYS OR STORM EVENT WITH GREATER THAN 0.5 INCH OF RAINFALL OR LIQUID EQUIVALENT PRECIPITATION.
- C. SOIL DISTURBANCE SHALL BE CONDUCTED IN SUCH A MANNER AS TO MINIMIZE EROSION. IF STRIPPING, CLEARING, GRADING, OR LANDSCAPING ARE TO BE DONE IN PHASES, THE PERMITTEE SHALL PLAN FOR APPROPRIATE SOIL EROSION AND SEDIMENT CONTROL MEASURES.
- D. A STABILIZED MAT OF CRUSHED STONE MEETING IDOT GRADATION CA-1 UNDERLAIN WITH FILTER FABRIC AND IN ACCORDANCE WITH THE ILLINOIS URBAN MANUAL, OR OTHER APPROPRIATE MEASURE(S) AS APPROVED BY THE ENFORCEMENT OFFICER, SHALL BE INSTALLED AT ANY POINT WHERE TRAFFIC WILL BE ENTERING OR LEAVING A CONSTRUCTION SITE. SEDIMENT OR SOIL REACHING AN IMPROVED PUBLIC RIGHT-OF-WAY, STREET, ALLEY OR PARKING AREA SHALL BE REMOVED BY SCRAPING OR STREET CLEANING AS ACCUMULATIONS WARRANT AND TRANSPORTED TO A CONTROLLED SEDIMENT DISPOSAL AREA.
- E. TEMPORARY DIVERSIONS SHALL BE CONSTRUCTED AS NECESSARY TO DIRECT ALL RUNOFF FROM HYDROLOGICALLY DISTURBED AREAS TO AN APPROPRIATE SEDIMENT TRAP OR BASIN.
- F. DISTURBED AREAS SHALL BE STABILIZED WITH TEMPORARY OR PERMANENT MEASURES WITHIN SEVEN (7) CALENDAR DAYS FOLLOWING THE END OF ACTIVE HYDROLOGIC DISTURBANCE OR REDISTURBANCE.
- G. ALL STOCKPILES SHALL HAVE APPROPRIATE MEASURES TO PREVENT EROSION. STOCKPILES SHALL NOT BE PLACED IN FLOOD PRONE AREAS OR WETLANDS AND DESIGNATED BUFFERS.
- H. SLOPES STEEPER THAN 3H:1V SHALL BE STABILIZED WITH APPROPRIATE MEASURES AS APPROVED BY THE ENFORCEMENT OFFICER.
- I. APPROPRIATE EROSION CONTROL BLANKET SHALL BE INSTALLED ON ALL INTERIOR DETENTION BASIN SIDE SLOPES BETWEEN THE NORMAL WATER LEVEL AND HIGH WATER LEVEL.
- J. STORM SEWERS THAT ARE OR WILL BE FUNCTIONING DURING CONSTRUCTION SHALL BE PROTECTED BY AN APPROPRIATE SEDIMENT CONTROL MEASURE.
- K. IF DEWATERING SERVICES ARE USED, ADJOINING PROPERTIES AND DISCHARGE LOCATIONS SHALL BE PROTECTED FROM EROSION AND SEDIMENTATION. DISCHARGES SHALL BE ROUTED THROUGH AN APPROVED ANIONIC POLYMER DEWATERING SYSTEM OR A SIMILAR MEASURE AS APPROVED BY THE ENFORCEMENT OFFICER. DEWATERING SYSTEMS SHOULD BE INSPECTED DAILY DURING OPERATIONAL PERIODS. THE ENFORCEMENT OFFICER, OR APPROVED REPRESENTATIVE, MUST BE PRESENT AT THE COMMENCEMENT OF DEWATERING ACTIVITIES.
- L. IF INSTALLED SOIL EROSION AND SEDIMENT CONTROL MEASURES DO NOT MINIMIZE SEDIMENT LEAVING THE DEVELOPMENT SITE, ADDITIONAL MEASURES SUCH AS ANIONIC POLYMERS OR FILTRATION SYSTEMS MAY BE REQUIRED BY THE ENFORCEMENT OFFICER.
- M. ALL TEMPORARY AND PERMANENT EROSION CONTROL MEASURES MUST BE MAINTAINED AND REPAIRED AS NEEDED. THE PROPERTY OWNER SHALL BE ULTIMATELY RESPONSIBLE FOR MAINTENANCE AND REPAIR.
- N. ALL TEMPORARY SEDIMENT CONTROL MEASURES SHALL BE REMOVED WITHIN 30 DAYS AFTER FINAL SITE STABILIZATION IS ACHIEVED OR AFTER THE TEMPORARY MEASURES ARE NO LONGER NEEDED.
- O. THE EROSION CONTROL MEASURES INDICATED ON THE PLANS ARE THE MINIMUM REQUIREMENTS. ADDITIONAL MEASURES MAY BE REQUIRED, AS DIRECTED BY THE ENGINEER, ENFORCEMENT OFFICER, OR OTHER GOVERNING AGENCY.

PLAN	REVISIONS	DATE
	BY	
NOTE BOOK NO.	GRADES CHECKED	
	STRUCTURE NOTATIONS CHNG	

PROFILE	REVISIONS	DATE
	BY	
NOTE BOOK NO.	GRADES CHECKED	
	STRUCTURE NOTATIONS CHNG	

BENCHMARKS

BRASS PLUG AT THE SE CORNER OF LAKE COOK AND WILKE ROAD LOCATED BEHIND THE SIDEWALK
ELEV = 735.52

FIRE HYDRANT AT THE SOUTH EAST CORNER OF LAKE COOK RD AND WILKE ROAD NNE TOP BOLT
ELEV = 737.26

HOT-MIX ASPHALT MIXTURE REQUIREMENTS

MIXTURE TYPE	AIR VOIDS
PATCHING	
CLASS D PATCHES (HMA BINDER IL-19 mm)	4% @ 50 GYR

NOTE 1: THE UNIT WEIGHT USED TO CALCULATE ALL HMA SURFACE MIXTURE QUANTITIES IS 112 LBS/SY/IN

NOTE 2: THE "AC TYPES" FOR POLYMERIZED HMA MIXES SHALL BE "SBS/SBR PG 76-22" AND FOR NON-POLYMERIZED

HMA THE "AC TYPE" SHALL BE "PG 64-22" UNLESS MODIFIED BY DISTRICT ONE SPECIAL PROVISIONS.

FOR HMA FULL DEPTH "AC TYPE" SEE SPECIAL PROVISIONS.

FOR USE OF RECYCLED MATERIALS SEE SPECIAL PROVISIONS

FILE NAME = Buffalo_Creek QUANTITIES-GENERAL NOTES.dwg	USER NAME = chomuth	DESIGNED -- BS	REVISED --	STATE OF ILLINOIS DEPARTMENT OF TRANSPORTATION	BUFFALO CREEK MULTI-USE TRAIL EXTENSION GENERAL NOTES / BENCHMARKS	F.A.U. RTE.	SECTION	COUNTY	TOTAL SHEETS	SHEET NO.
	LAYOUT NAME = GENERAL NOTES	DRAWN -- CH	REVISED --			19-00212-00-BT	COOK	29	3	
	PLOT SCALE = 20.00' / IN.	CHECKED -- MP	REVISED --			CONTRACT NO. 61G52				
	PLOT DATE = Apr 22, 2020-12:59pm	DATE -- 09/12/2019	REVISED --			ILLINOIS FED. AID PROJECT				
				SCALE: VERT. N/A SHEET NO. 3 OF 29 SHEETS						

SUMMARY OF QUANTITIES

SI	CODE NUMBER	ITEM	UNIT	TOTAL QUANTITY	CONSTRUCTION CODE	
					80% FEDERAL 20% LOCAL	0021 URBAN
	20101000	TEMPORARY FENCE	FOOT	50		50
	20201200	REMOVAL AND DISPOSAL OF UNSUITABLE MATERIAL	CU YD	200		200
	20400800	FURNISHED EXCAVATION	CU YD	287		287
	20700220	POROUS GRANULAR EMBANKMENT	CU YD	200		200
	28000510	INLET FILTERS	EACH	2		2
	21001000	GEOTECHNICAL FABRIC FOR GROUND STABILIZATION	SQ YD	200		200
	21101615	TOPSOIL FURNISH AND PLACE, 4"	SQ YD	400		400
	21101625	TOPSOIL FURNISH AND PLACE, 6"	SQ YD	1750		1750
*	25200110	SODDING, SALT TOLERANT	SQ YD	400		400
*	25000400	NITROGEN FERTILIZER NUTRIENT	POUND	11		11
*	25000600	POTASSIUM FERTILIZER NUTRIENT	POUND	11		11
*	25100125	MULCH, METHOD 3	ACRE	0.25		0.25
*	25100630	EROSION CONTROL BLANKET	SQ YD	600		600
*	25200200	SUPPLEMENTAL WATERING	UNIT	5		5
	28000400	PERIMETER EROSION BARRIER	FOOT	425		425
	31101100	SUBBASE GRANULAR MATERIAL, TYPE B	CU YD	150		150

* SPECIALTY ITEM

SI	CODE NUMBER	ITEM	UNIT	TOTAL QUANTITY	CONSTRUCTION CODE	
					80% FEDERAL 20% LOCAL	0021 URBAN
	31101200	SUBBASE GRANULAR MATERIAL, TYPE B 4"	SQ YD	120		120
	35101700	AGGREGATE BASE COURSE, TYPE B 5"	SQ YD	600		600
	42400200	PORTLAND CEMENT CONCRETE SIDEWALK 5 INCH	SQ FT	604		604
	42400410	PORTLAND CEMENT CONCRETE SIDEWALK 8 INCH	SQ FT	465		465
	44003100	MEDIAN REMOVAL	SQ FT	45		45
	44000100	PAVEMENT REMOVAL	SQ YD	22		22
	44000500	COMBINATION CURB AND GUTTER REMOVAL	FOOT	100		100
	44000600	SIDEWALK REMOVAL	SQ FT	869		869
	44201337	CLASS C PATCHES, TYPE I, 9 INCH	SQ YD	5		5
	44201692	CLASS D PATCHES, TYPE II, 4 INCH	SQ YD	20		20
	54213660	PRECAST REINFORCED CONCRETE FLARED END SECTIONS 15"	EACH	2		2
	542A0220	PIPE CULVERTS, CLASS A, TYPE 1 15"	FOOT	32		32
	60265700	VALVE VAULTS TO BE ADJUSTED	EACH	1		1
	60603800	COMBINATION CONCRETE CURB AND GUTTER, TYPE B-6.12	FOOT	80		80
	60604400	COMBINATION CONCRETE CURB AND GUTTER, TYPE B-6.18	FOOT	20		20
	60619200	CONCRETE MEDIAN, TYPE SB-6.06	SQ FT	30		30

* SPECIALTY ITEM

PLAN	DATE	BY
NO.		

PROFILE	DATE	BY
NO.		

T:\Bicycle Advisory Commission\2019\2019-20001

FILE NAME = Buffalo_Creek QUANTITIES-GENERAL NOTES.dwg	USER NAME = chomuth	DESIGNED - BS	REVISED -	STATE OF ILLINOIS DEPARTMENT OF TRANSPORTATION	BUFFALO CREEK MULTI-USE TRAIL EXTENSION SUMMARY OF QUANTITIES	F.A.U. RTE.	SECTION	COUNTY	TOTAL SHEETS	SHEET NO.
LAYOUT NAME = SQ 1 of 3	DRAWN - CH	REVISED -	19-00212-00-BT			COOK	29	4		
PLOT SCALE = 20.00' / IN.	CHECKED - MP	REVISED -	CONTRACT NO. 61G52							
PLOT DATE = Apr 22, 2020-12:59pm	DATE - 09/12/2019	REVISED -	ILLINOIS FED. AID PROJECT							

SUMMARY OF QUANTITIES

* SPECIALTY ITEM

CONSTRUCTION
CODE
80% FEDERAL
20% LOCAL

SI	CODE NUMBER	ITEM	UNIT	TOTAL QUANTITY	CONSTRUCTION CODE	
					0021	URBAN
	67100100	MOBILIZATION	L SUM	1		
	70102635	TRAFFIC CONTROL AND PROTECTION, STANDARD 701701	L SUM	1		
	70102640	TRAFFIC CONTROL AND PROTECTION, STANDARD 701801	L SUM	1		
*	72000100	SIGN PANEL - TYPE 1	SQ FT	15		
*	72800100	TELESCOPING STEEL SIGN SUPPORT	FOOT	10		
	72900100	METAL POST - TYPE A	FOOT	30		
*	78000650	THERMOPLASTIC PAVEMENT MARKING - LINE 24"	FOOT	25		
*	78009000	MODIFIED URETHANE PAVEMENT MARKING - LETTERS AND SYMBOLS	SQ FT	73		
*	78009006	MODIFIED URETHANE PAVEMENT MARKING - LINE 6"	FOOT	280		
*	78009012	MODIFIED URETHANE PAVEMENT MARKING - LINE 12"	FOOT	420		
*	78009024	MODIFIED URETHANE PAVEMENT MARKING - LINE 24"	FOOT	70		
*	81028200	UNDERGROUND CONDUIT, GALVANIZED STEEL, 2" DIA.	FOOT	46		
*	85000200	MAINTENANCE OF EXISTING TRAFFIC SIGNAL INSTALLATION	EACH	1		
*	85700200	FULL-ACTUATED CONTROLLER AND TYPE IV CABINET	EACH	1		
*	87300010	GROUNDING EXISTING HANDHOLE FRAME AND COVER	EACH	7		
*	87301215	ELECTRIC CABLE IN CONDUIT, SIGNAL NO. 14 2C	FOOT	683		

* SPECIALTY ITEM

CONSTRUCTION
CODE
80% FEDERAL
20% LOCAL

SI	CODE NUMBER	ITEM	UNIT	TOTAL QUANTITY	CONSTRUCTION CODE	
					0021	URBAN
*	87301225	ELECTRIC CABLE IN CONDUIT, SIGNAL NO. 14 3C	FOOT	1266		
*	87301155	ELECTRIC CABLE IN CONDUIT, SIGNAL NO. 12 7C	FOOT	384		
*	87301900	ELECTRIC CABLE IN CONDUIT, EQUIPMENT GROUNDING CONDUCTOR, NO. 6 1C	FOOT	1170		
*	87502500	TRAFFIC SIGNAL POST, GALVANIZED STEEL 16 FT.	EACH	2		
*	87502520	TRAFFIC SIGNAL POST, GALVANIZED STEEL 18 FT.	EACH	1		
*	87900200	DRILL EXISTING HANDHOLE	EACH	3		
*	88030100	SIGNAL HEAD, LED, 1-FACE, 5-SECTION, BRACKET MOUNTED	EACH	2		
*	88102717	PEDESTRIAN SIGNAL HEAD, LED, 1-FACE, BRACKET MOUNTED WITH COUNTDOWN TIMER	EACH	4		
*	88600100	DETECTOR LOOP, TYPE I	FOOT	182		
*	88700200	LIGHT DETECTOR	EACH	2		
*	88700300	LIGHT DETECTOR AMPLIFIER	EACH	1		
*	88800100	PEDESTRIAN PUSH-BUTTON	EACH	4		
*	89502375	REMOVE EXISTING TRAFFIC SIGNAL EQUIPMENT	EACH	1		
*	89502376	REBUILD EXISTING HANDHOLE	EACH	1		
	Z0013797	STABILIZED CONSTRUCTION ENTRANCE	SQ YD	250		
	Z0013798	CONSTRUCTION LAYOUT	L SUM	1		

PLAN

DATE: _____ BY: _____

DESIGNED: _____ CHECKED: _____

NOTE BOOK NO. _____

STRUCTURE NOTATION CHFD

PROFILE

DATE: _____ BY: _____

DESIGNED: _____ CHECKED: _____

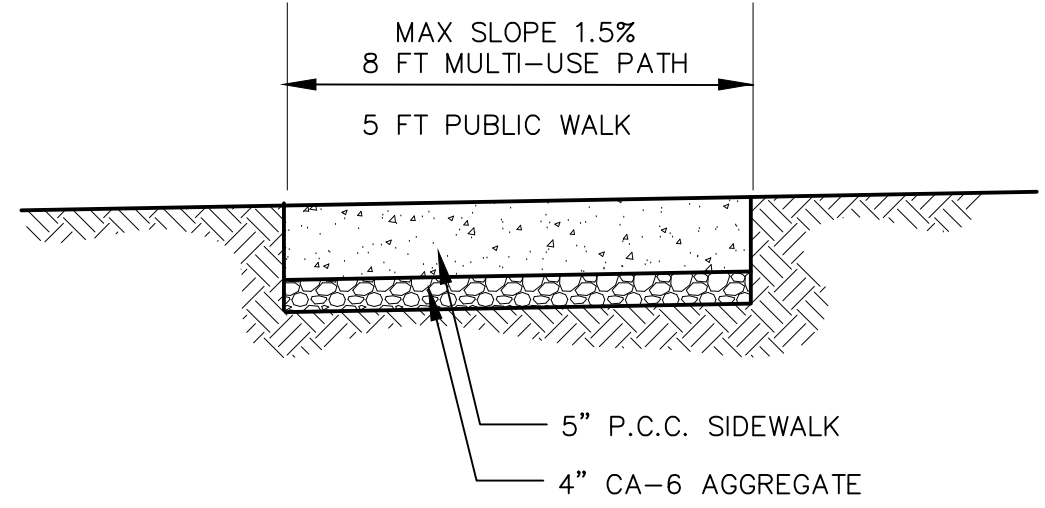
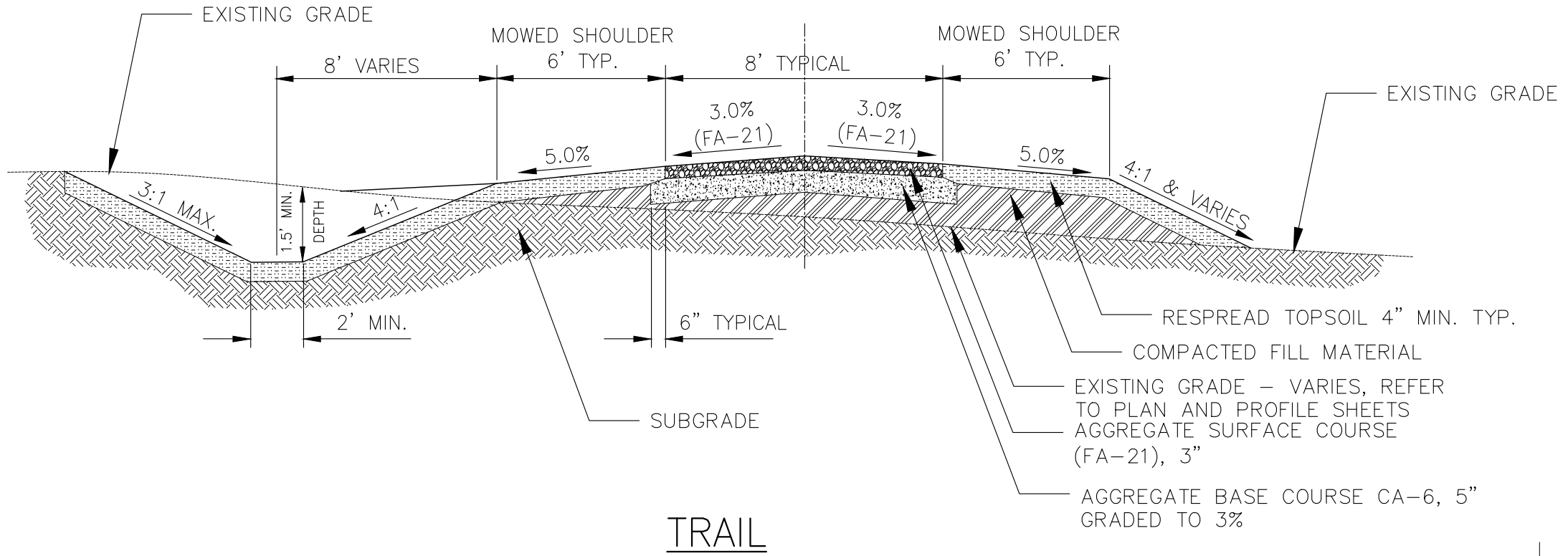
NOTE BOOK NO. _____

STRUCTURE NOTATION CHFD

I:\Borish\Adrian\Commuter\CMQ\20-0001

DATE	
BY	
DESIGNED	
CHECKED	
IN CHARGE	
STRUCTURE NOTATIONS CHKD	
PLAN	
NOTE BOOK NO.	

DATE	
BY	
DESIGNED	
CHECKED	
IN CHARGE	
STRUCTURE NOTATIONS CHKD	
PROFILE	
NOTE BOOK NO.	



TRAIL - OPEN AREA NOTES

- SPECIFIC TRAIL LOCATIONS MAY NOT REQUIRE THE DITCHING SHOWN OR MAY REQUIRE DITCHING ON BOTH SIDES OF THE TRAIL. REFER TO OTHER PLAN SHEETS FOR DITCHING REQUIREMENTS AND LOCATIONS.
- ALL AGGREGATE BASE AND AGGREGATE SURFACE SHALL BE INSTALLED USING A PAVING MACHINE. AGGREGATE TRAIL SURFACES SHALL BE COMPACTED WITH A ROLLER NO WIDER THAN HALF THE TRAIL WIDTH TO MAINTAIN THE CROWNED PROFILE.
- THE EXISTING GRADE LINES SHOWN IN THE SECTIONS ARE FOR ILLUSTRATIVE PURPOSES ONLY. REFER TO THE PLAN AND PROFILE SHEETS FOR EXISTING AND PROPOSED ELEVATIONS AND CUT AND FILL REQUIREMENTS ALONG THE TRAIL LENGTH.
- A WOVEN GEOTEXTILE FOR GROUND STABILIZATION MAY BE REQUIRED UPON DIRECTION BY THE OWNER WHEN UNSUITABLE SOIL CONDITIONS ARE ENCOUNTERED AND IS NOT SHOWN ON THE SECTION.
- THE FINISHED TOPSOIL GRADE DIRECTLY ADJACENT TO THE PAVED TRAIL EDGES MUST BE EQUAL TO OR SLIGHTLY (1/4") LOWER THAN THE EDGE OF TRAIL TO ASSURE POSITIVE DRAINAGE.
- PROVIDE A SOFT GRADUAL TRANSITION BETWEEN EXISTING AND PROPOSED GRADING.

LANDSCAPE NOTES

- TRAIL SHOULDERS SHALL BE SEEDED WITH SEEDING CLASS 1B (MODIFIED).
- ALL OTHER AREAS SHALL BE SEEDED WITH SEEDING CLASS 4 (MODIFIED).

TRAIL

CONCRETE SIDEWALK TYPICAL SECTION

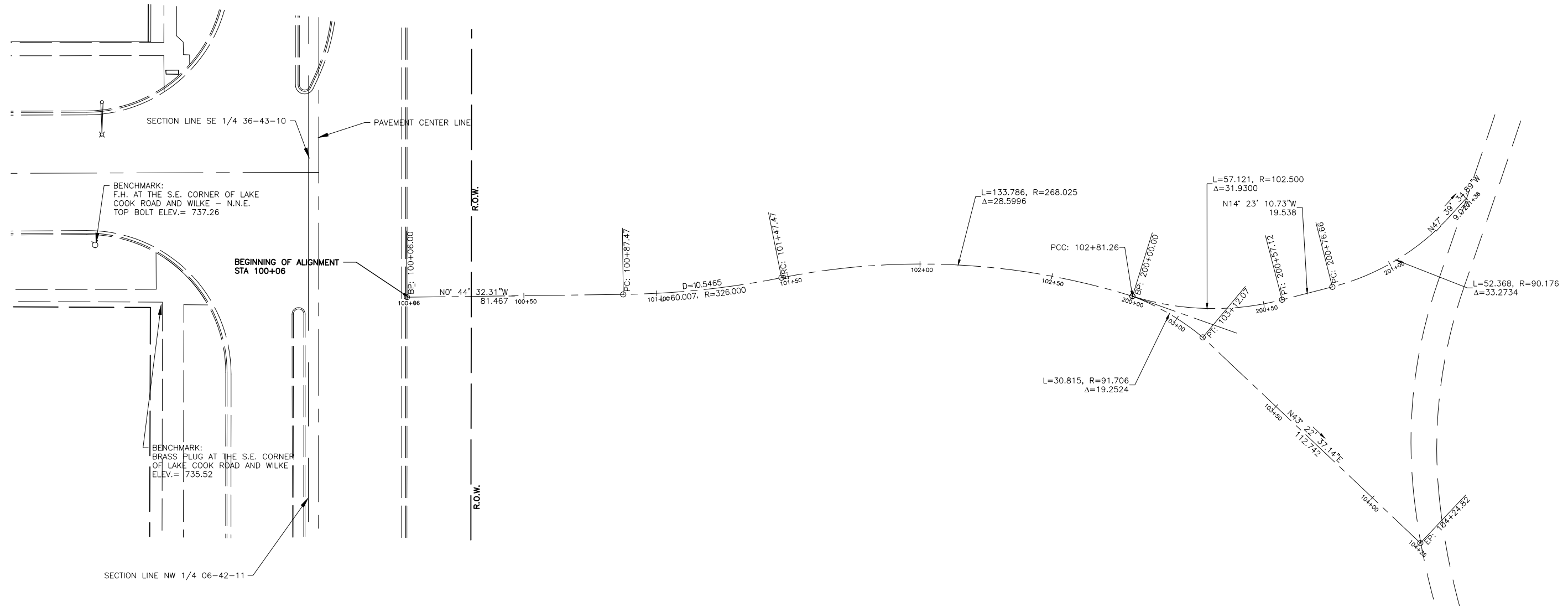
* SIDEWALK THICKNESS INCREASED TO 8" UNDER DETECTABLE WARNINGS

FILE NAME = Buffalo_Creek_title_sht2019.dwg	USER NAME = chomuth	DESIGNED - BS	REVISED -	STATE OF ILLINOIS DEPARTMENT OF TRANSPORTATION	BUFFALO CREEK MULTI-USE TRAIL EXTENSION TYPICAL SECTION		F.A.U. RTE.	SECTION	COUNTY	TOTAL SHEETS	SHEET NO.
	LAYOUT NAME = TYPICAL SECTION	DRAWN - CH	REVISED -		SCALE: VERT. N.T.S.	SHEET NO. 7 OF 29 SHEETS	STA. TYPICA TO STA. ECTION	19-00212-00-BT	COOK	29	7
	PLOT SCALE = 20.00' / IN.	CHECKED - MP	REVISED -		CONTRACT NO. 61G52						
	PLOT DATE = Apr 22, 2020-12:59pm	DATE - 09/12/2019	REVISED -		ILLINOIS FED. AID PROJECT						

T:\Bicycle Advisory Commission\QMAO\FY-2008\

PLAN	
DATE	BY
REVISIONS	
GRADES CHECKED	
B.M. NOTED	
STRUCTURE NOTATIONS CHKD	
NO.	

PROFILE	
DATE	BY
REVISIONS	
GRADES CHECKED	
B.M. NOTED	
STRUCTURE NOTATIONS CHKD	
NO.	



FILE NAME = Buffalo_Creek_Design2019.dwg

USER NAME = chomuth	DESIGNED - BS	REVISED -
LAYOUT NAME = ALIGNMENT	DRAWN - CH	REVISED -
PLOT SCALE = 20.00' / IN.	CHECKED - MP	REVISED -
PLOT DATE = Apr 22, 2020-12:59pm	DATE - 09/12/2019	REVISED -

**STATE OF ILLINOIS
DEPARTMENT OF TRANSPORTATION**

**BUFFALO CREEK MULTI-USE TRAIL EXTENSION
LAKE COUNTY FOREST PRESERVE TRAIL ALIGNMENT AND TIE**

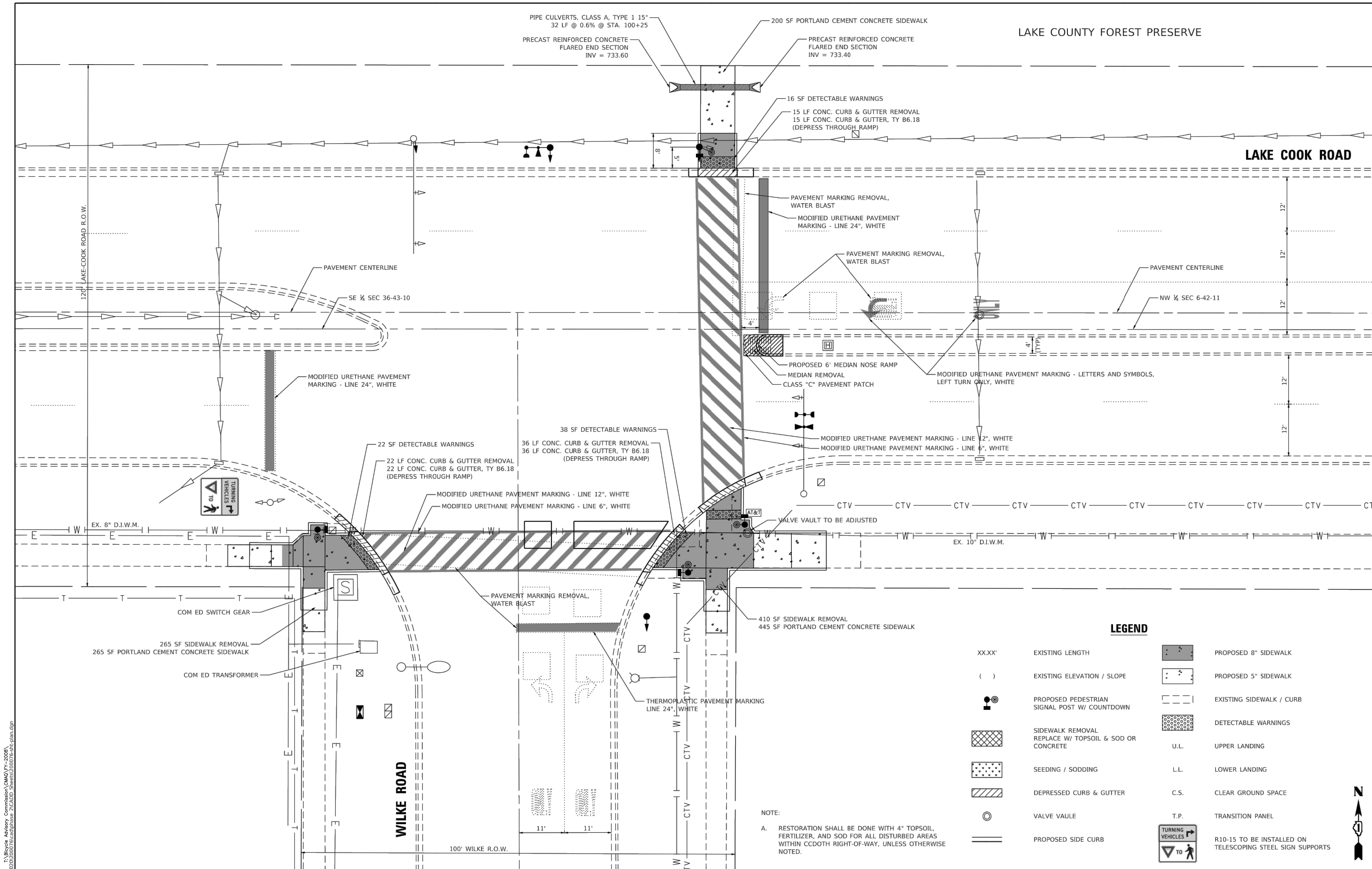
HORIZ. 1"=20'
SCALE: VERT. 1"=5' | SHEET NO. 8 OF 29 SHEETS | STA. TO STA.

F.A.U. RTE.	SECTION	COUNTY	TOTAL SHEETS	SHEET NO.
	19-00212-00-BT	COOK	29	8
CONTRACT NO. 61G52				
ILLINOIS FED. AID PROJECT				

T:\Bicycle Advisory Commission\CMAQ\FY-2008\Buffalo_Creek_Design2019.dwg

LAKE COOK ROAD

WILKE ROAD



LEGEND

- XX.XX' EXISTING LENGTH
- () EXISTING ELEVATION / SLOPE
- PROPOSED PEDESTRIAN SIGNAL POST W/ COUNTDOWN
- SIDWALK REMOVAL REPLACE W/ TOPSOIL & SOD OR CONCRETE
- SEEDING / SODDING
- DEPRESSED CURB & GUTTER
- VALVE VAULE
- PROPOSED SIDE CURB
- PROPOSED 8" SIDWALK
- PROPOSED 5" SIDWALK
- EXISTING SIDWALK / CURB
- DETECTABLE WARNINGS
- U.L. UPPER LANDING
- L.L. LOWER LANDING
- C.S. CLEAR GROUND SPACE
- T.P. TRANSITION PANEL
- TURNING VEHICLES
- R10-15 TO BE INSTALLED ON TELESCOPING STEEL SIGN SUPPORTS

NOTE:
 A. RESTORATION SHALL BE DONE WITH 4" TOPSOIL, FERTILIZER, AND SOD FOR ALL DISTURBED AREAS WITHIN CCDOTH RIGHT-OF-WAY, UNLESS OTHERWISE NOTED.

MODEL Default: T:\Bicycle Advisory Commission\CMQAQ\FY-2008\FILE NAME P1020200076r\cdg\phase 2\CADD_Sheets\20076r-3r-plan.dgn
 FILE NAME = Buffalo_Creek_Design2019.dwg

FILE NAME =	USER NAME = nhalan
DESIGNED -	DRAWN -
CHECKED -	DATE -
REVISIONS	
REVISIONS	
REVISIONS	
REVISIONS	

DESIGNED -	REVISIONS
DRAWN -	REVISIONS
CHECKED -	REVISIONS
DATE -	REVISIONS

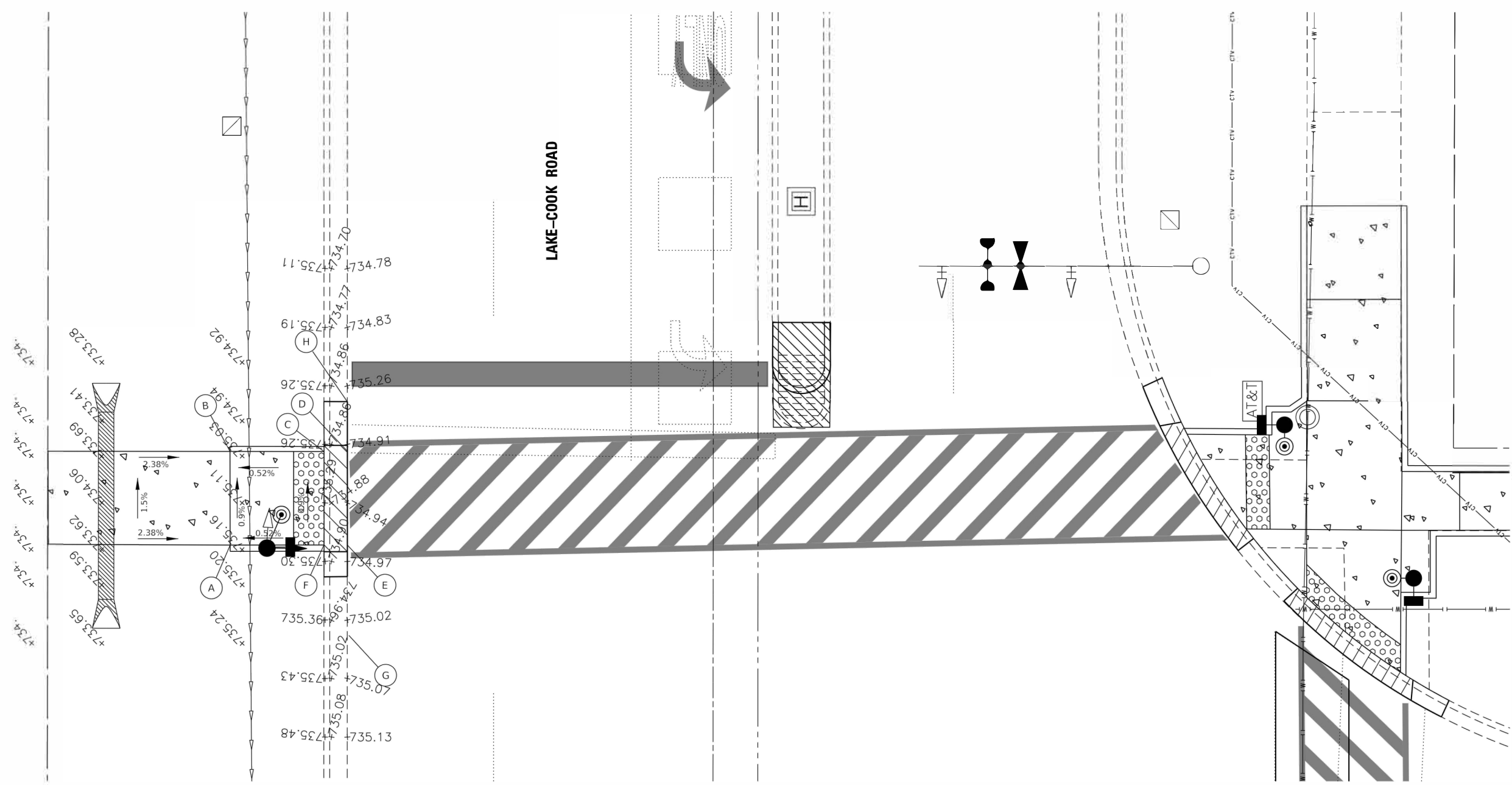
COOK COUNTY DEPARTMENT OF TRANSPORTATION & HIGHWAYS

BUFFALO CREEK MULTI-USE TRAIL EXTENSION
COOK COUNTY INTERSECTION IMPROVEMENT PLAN

SCALE: 1"=10' SHEET OF SHEETS STA. TO STA.

F.A.U. RTE.	SECTION	COUNTY	TOTAL SHEETS	SHEET NO.
	19-00212-00-BT	COOK	29	11
ILLINOIS FED. AID PROJECT			CONTRACT NO. 61G52	





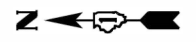
LAKE-COOK ROAD

LEGEND

- XX.XX' EXISTING LENGTH PROPOSED 5" SIDEWALK
- () EXISTING ELEVATION / SLOPE EXISTING SIDEWALK / CURB
- PROPOSED PEDESTRIAN SIGNAL POST W/ COUNTDOWN DETECTABLE WARNINGS
- SIDEWALK REMOVAL REPLACE W/ TOPSOIL & SOD OR CONCRETE U.L. UPPER LANDING
- SEEDING / SODDING L.L. LOWER LANDING
- DEPRESSED CURB & GUTTER C.S. CLEAR GROUND SPACE
- VALVE VAULE T.P. TRANSITION PANEL
- PROPOSED SIDE CURB

	Existing	Proposed
A	724.99	735.07
B	734.54	735
C	735.26	734.88
D	734.91	734.9
E	734.96	734.97
F	735.3	734.95
G	735.02	735.02
H	735.26	735.26

- NOTES
- A. ALL PEDESTRIAN PUSH-BUTTON LOCATIONS SHALL MEET ADA/PROWAG REQUIREMENTS.
 - B. COORDINATION BETWEEN ELECTRICAL CONTRACTOR AND SIDEWALK CONTRACTOR IS REQUIRED BEFORE THE SIDEWALK CONSTRUCTION. THE CONTRACTOR SHALL CONTACT CCDOTH AT 312-603-1730 BEFORE CONSTRUCTION.
 - C. THE PEDESTRIAN PUSH-BUTTON SHALL BE 36" ABOVE PAVEMENT.
 - D. RESTORATION SHALL BE DONE WITH 4" TOPSOIL, FERTILIZER, AND SOD FOR ALL DISTURBED AREAS WITHIN CCDOTH RIGHT-OF-WAY.

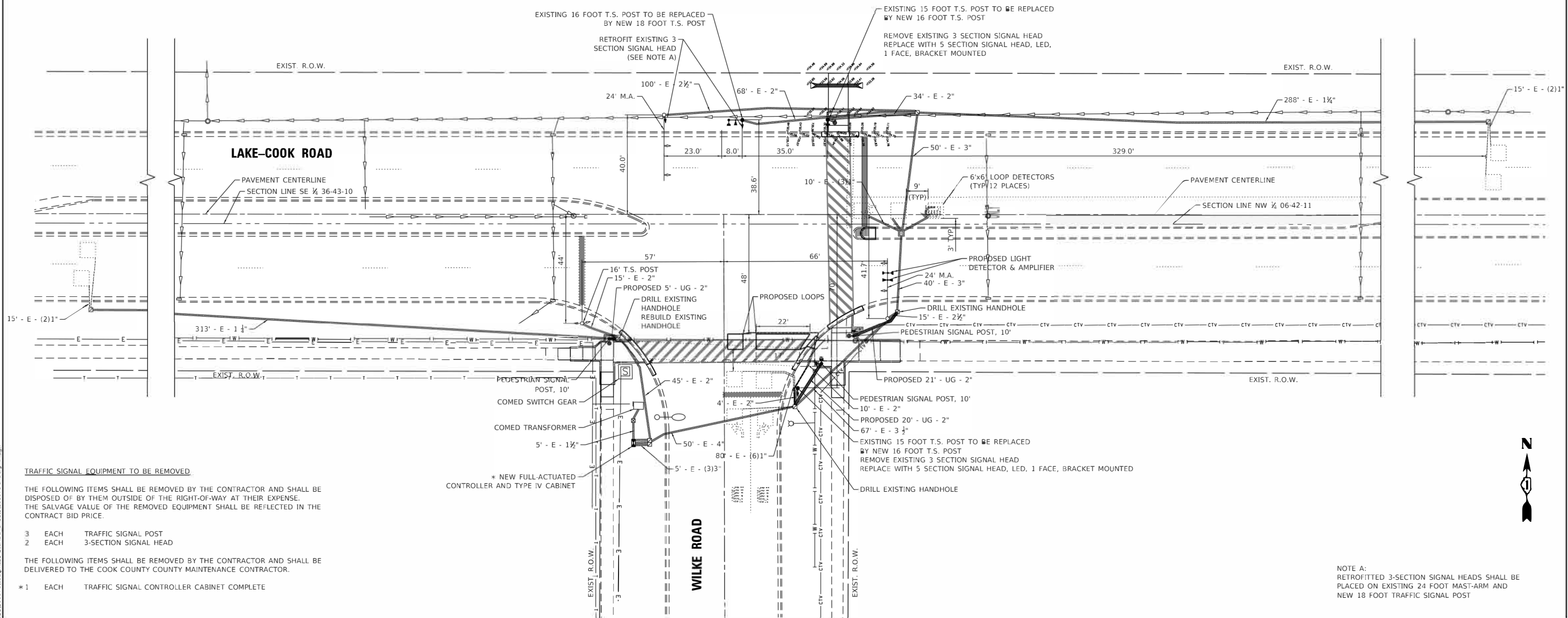


MODEL: D:\Bicycle Advisory Commission\COMAO\17-2009\Buffalo_Creek_Design\2019.dwg
 FILE NAME: P:\2020\0076\adign\2019.dwg
 SHEET: 29 OF 13

FILE NAME = Buffalo_Creek_Design2019.dwg	USER NAME = nh lan	DESIGNED - DRAWN -	REVISED - REVISED -	COOK COUNTY DEPARTMENT OF TRANSPORTATION & HIGHWAYS	BUFFALO CREEK MULTI-USE TRAIL EXTENSION LAKE COOK ROAD & WILKE ROAD	F.A.U. RTE. 19-00212-00-BT	COUNTY COOK	TOTAL SHEETS 29	SHEET NO. 13
PLOT SCALE = 5.0000' / in. PLOT DATE = 4/3/2020				SCALE: 1"=5' SHEET OF SHEETS STA. TO STA.		CONTRACT NO. 61652 ILLINOIS FED. AID PROJECT			

TRAFFIC SIGNAL GENERAL NOTES:

- A. THE CONTRACTOR SHALL INFORM THE CCDOH DESIGN ENGINEER AT (312) 603-1730 PRIOR TO THE START OF ANY WORK ON THE CONTRACT. A MINIMUM OF FIVE (5) WORKING DAYS ADVANCE NOTICE IS REQUIRED.
- B. THE CONTRACTOR SHALL MARK LOCATIONS OF LOOPS AND CONTACT THE COUNTY DESIGN ENGINEER AT (312) 603-1730 FOR LOCATION APPROVAL PRIOR TO THE CUTTING OF THE LOOPS. A MINIMUM OF FIVE (5) WORKING DAYS ADVANCE NOTICE IS REQUIRED.
- C. ALL MAST ARM MOUNTED SIGNAL HEADS ARE TO BE ATTACHED 2'-0" FROM THE END OF MAST ARM UNLESS OTHERWISE NOTED.
- D. ALL SIGNAL POSTS SHALL BE SET BACK 4 FEET MINIMUM AND ALL MAST ARM POLES SHALL BE SET BACK 6 FEET MINIMUM FROM THEIR CENTER TO THE BACK OF CURB UNLESS OTHERWISE NOTED. IN NON-CURBED AREAS THE MAST ARM POLE AND THE SIGNAL POST SHALL BE LOCATED A MINIMUM OF 10 FEET BEHIND THE EDGE OF PAVEMENT OR 2 FEET BEHIND THE EDGE OF THE SHOULDER, WHICHEVER DISTANCE IS GREATER.
- E. THE EXACT LOCATIONS OF ALL UTILITIES SHALL BE FIELD VERIFIED BY THE CONTRACTOR BEFORE THE INSTALLATION OF ANY COMPONENTS OF THE TRAFFIC SIGNAL SYSTEM. FOR THE LOCATIONS OF THE UTILITIES, CALL JULIE TOLL FREE AT 1-800-892-0123.
- F. ALL ELECTRICAL CABLE SHALL HAVE A POLYVINYL CHLORIDE JACKET.
- G. ALL PEDESTRIAN PUSH-BUTTON LOCATIONS SHALL FOLLOW THE GUIDELINES FROM ADA/PROWAG.
- H. THE LOCATION OF THE PEDESTRIAN PUSHBUTTON MUST BE PARALLEL TO THE CROSSWALK.
- I. COORDINATION BETWEEN THE ELECTRICAL CONTRACTOR AND SIDEWALK CONTRACTOR IS REQUIRED BEFORE THE SIDEWALK CONSTRUCTION. THE CONTRACTOR SHALL CONTACT CCDOH AT 312-603-1730.
- J. IF PEDESTRIAN PUSH BUTTONS ARE CHANGED DUE TO ADA/PROWAG REQUIREMENTS, THE EXISTING HOLES IN THE POST AND/OR MAST ARM POLE SHALL BE PLUGGED.
- K. A PEDESTRIAN PUSHBUTTON EXTENSION MAY BE NEEDED FOR THE ACCESSIBILITY AND CORRECT ALIGNMENT OF PEDESTRIAN PUSHBUTTON. THE EXTENSION SHALL BE INCLUDED IN COST OF THE PAY ITEM "PEDESTRIAN PUSH-BUTTON".
- L. ALL WORK TO CHANGE FROM THE EXISTING SIGNALS TO THE NEW SIGNALS AND MAKE THEM OPERATIONAL SHALL BE COMPLETED ON THE SAME WORKING DAY. CONTRACTOR SHALL MINIMIZE DISRUPTIONS TO TRAFFIC.
- M. EACH DETECTOR LOOP SHALL HAVE ITS OWN 1" COILABLE NON-METALLIC CONDUIT BETWEEN THE EDGE OF PAVEMENT AND THE ADJACENT HANDHOLE AS SHOWN ON THE PLANS AND AS STATED IN THE TRAFFIC SIGNAL SPECIFICATIONS



TRAFFIC SIGNAL EQUIPMENT TO BE REMOVED.

THE FOLLOWING ITEMS SHALL BE REMOVED BY THE CONTRACTOR AND SHALL BE DISPOSED OF BY THEM OUTSIDE OF THE RIGHT-OF-WAY AT THEIR EXPENSE. THE SALVAGE VALUE OF THE REMOVED EQUIPMENT SHALL BE REFLECTED IN THE CONTRACT BID PRICE.

- 3 EACH TRAFFIC SIGNAL POST
- 2 EACH 3-SECTION SIGNAL HEAD

THE FOLLOWING ITEMS SHALL BE REMOVED BY THE CONTRACTOR AND SHALL BE DELIVERED TO THE COOK COUNTY COUNTY MAINTENANCE CONTRACTOR.

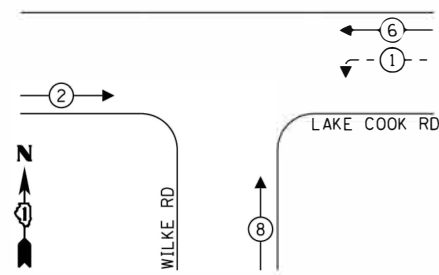
- * 1 EACH TRAFFIC SIGNAL CONTROLLER CABINET COMPLETE

NOTE A:
RETROFITTED 3-SECTION SIGNAL HEADS SHALL BE PLACED ON EXISTING 24 FOOT MAST-ARM AND NEW 18 FOOT TRAFFIC SIGNAL POST

MODEL: D:\dtd\11 - T.Boyle Advisory Commission\QMAO\17-208\FILE NAME: P1202000\FedAid\2019\2019-04-03\signal.dwg

FILE NAME = Buffalo_Creek_Design2019.dwg	USER NAME = nhalan	DESIGNED =	REVISED =	COOK COUNTY DEPARTMENT OF TRANSPORTATION & HIGHWAYS	BUFFALO CREEK MULTI-USE TRAIL EXTENSION COOK COUNTY TRAFFIC SIGNAL IMPROVEMENTS	F.A.U. RTE.	SECTION	COUNTY	TOTAL SHEETS	SHEET NO.
	PLOT SCALE = 20.0000' / 1 in.	CHECKED =	REVISED =			19-00212-00-BT	COOK	29	14	
PLOT DATE = 4/3/2020	DATE =	REVISED =	SCALE: 1"=20'	SHEET	OF	SHEETS	STA.	TO	STA.	ILLINOIS FED. AID PROJECT

EXISTING CONTROLLER SEQUENCE



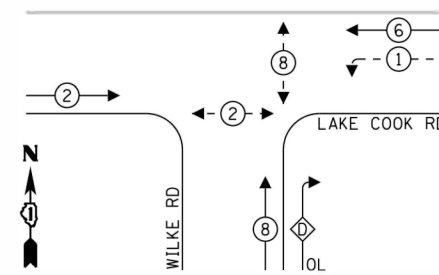
LEGEND:

- ⊛ PROTECTED PHASE
- ⊛- PROTECTED/PERMITTED PHASE
- ⊛ PEDESTRIAN PHASE
- ⊛ OL OVERLAP

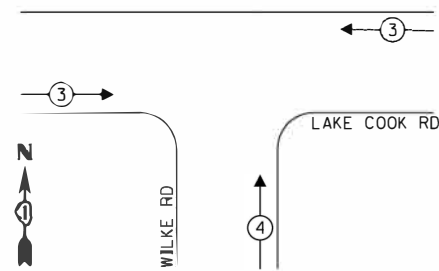
RIGHT TURN OVERLAP PHASE DESIGNATION:

OVERLAP LETTER	PERMISSIVE PHASE	PROTECTED PHASE
D	= 8	+ 1

PROPOSED CONTROLLER SEQUENCE



PROPOSED EMERGENCY VEHICLE PREEMPTION SEQUENCE

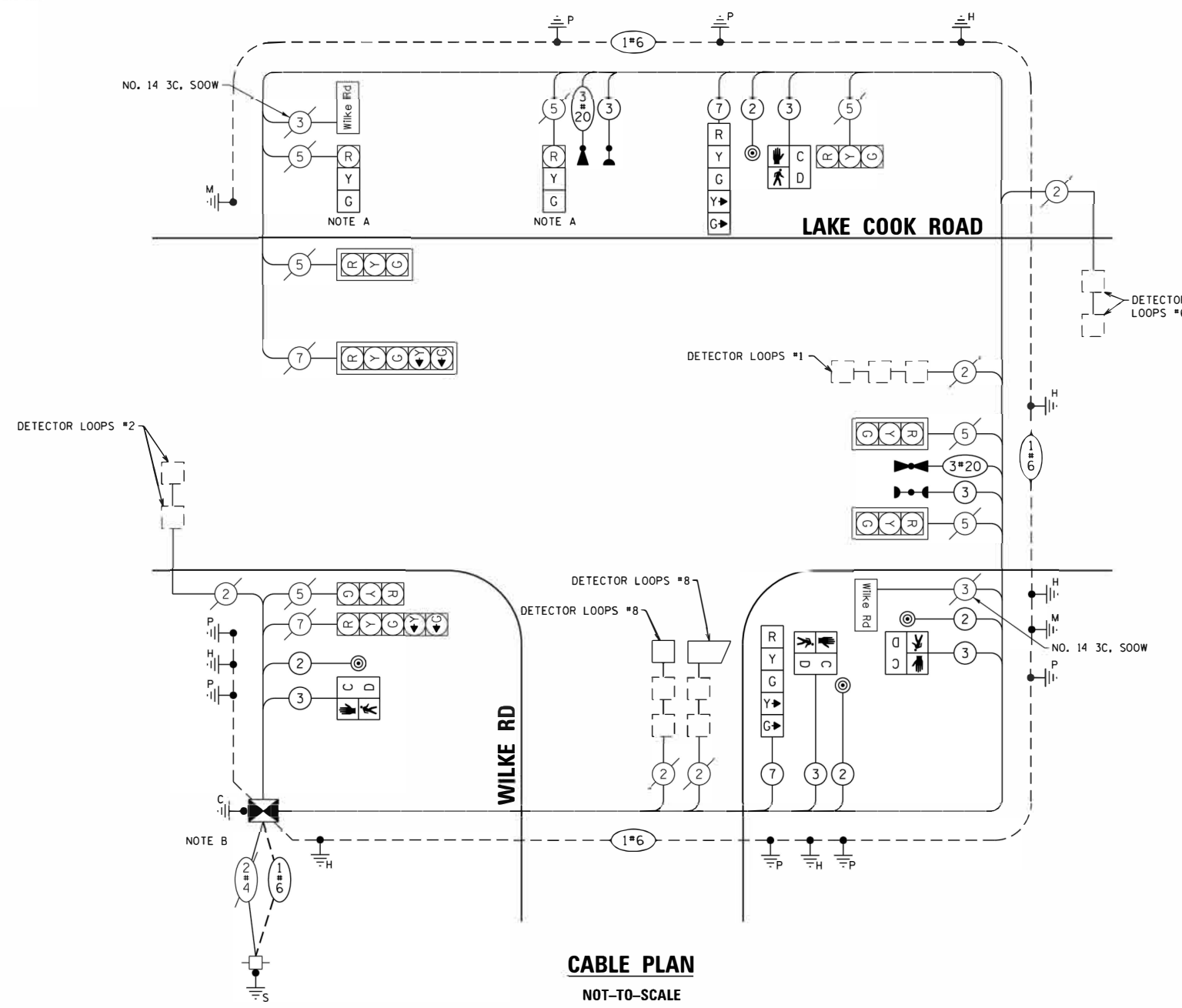


PROPOSED EMERGENCY VEHICLE PREEMPTORS		
PROPOSED EMERGENCY VEHICLES PREEMPTORS	3	4
MOVEMENT	← →	↑

COOK COUNTY DEPT. OF TRANSPORTATION AND HIGHWAYS TRAFFIC SIGNAL INSTALLATION ELECTRICAL SERVICE REQUIREMENTS				TOTAL WATTAGE
TYPE	NO. OF LAMPS X	WATTAGE	% OPERATIONS	
SIGNAL (RED)	11	17	0.50	93.50
(YELLOW)	11	25	0.05	13.75
(GREEN)	11	15	0.45	74.25
ARROW	8	12	0.10	9.60
PED. SIGNAL	4	25	1.00	100.00
CONTROLLER	1	100	1.00	100.00
VEHICLE DETECT.	5	5	1.00	25.00
HEATER	1	200	0.40	80.00
LED ILLUMINATED STREET SIGN 6'	2	108	0.40	86.40
TOTAL =				496.10

ENERGY COSTS TO: COOK COUNTY BUREAU OF ADMINISTRATION 118 N. CLARK STREET, ROOM 801 CHICAGO, IL 60602
 ENERGY COST SHARE COOK COUNTY: 67%
 TOWER ACCOUNT NO. 1143025228 SUPPLEMENT NO. NC150357
 VILLAGE OF ARLINGTON HEIGHTS 33 S. ARLINGTON HEIGHTS ROAD ARLINGTON HEIGHTS, ILLINOIS 60005
 ARLINGTON HEIGHTS: 33%
 ENERGY SUPPLY - CONTACT: COMED PHONE: (866) 639-3532 COMPANY: EFFECTIVE DATE: TO BE DETERMINED

FOUNDATION (DEPTH)	FT. (m)	CABLE SLACK	FT. (m)	VERTICAL	FT. (m)
TYPE A - POST	4 (1.2)	HANDHOLE	6.5 (2.0)	ALL FOUNDATIONS	3.5
C - CONTROLLER W/UPS	4 (1.2)	DOUBLE HANDHOLE	13 (4.0)	MAST ARM (L) POLE	20' + 1'-2" = (6M+L-0.6M) =
D - CONTROLLER	4 (1.2)	SIGNAL POST	2 (1.0)	BRACKET MOUNTED	13 (4.0)
E - M. ARM POLE	15 (4.6)	CONTROLLER CAB.	1 (0.5)	PED. PUSHBUTTON	6 (1.5)
30" (750mm)	15 (4.6)	FIBER OPTIC	13 (4.0)	ELECTRIC SERVICE	13.5 (4.1)
35" (900 mm)	15 (4.6)	ELECTRIC SERVICE	1 (0.5)	SERVICE TO GROUND	13.5 (4.1)
42" (1050 mm)	25 (7.6)	GROUND CABLE	1 (0.5)	POST MOUNTED	6 (1.8)



CABLE PLAN
NOT-TO-SCALE

NOTE A: THE EXISTING 3-SECTION SIGNAL HEAD SHALL BE RETROFITTED BY REMOVING THE YELLOW AND GREEN ARROW SIGNAL INDICATIONS AND REPLACING THEM WITH CIRCULAR SIGNAL LENSES. DIALIGHT SIGNAL HEADS SHALL BE USED FOR RETROFITTING THE SIGNAL INDICATIONS TO MATCH EXISTING. PAID FOR AS LED SIGNAL FACE RETROFIT, GREEN BALL AND LED SIGNAL FACE RETROFIT, YELLOW BALL.

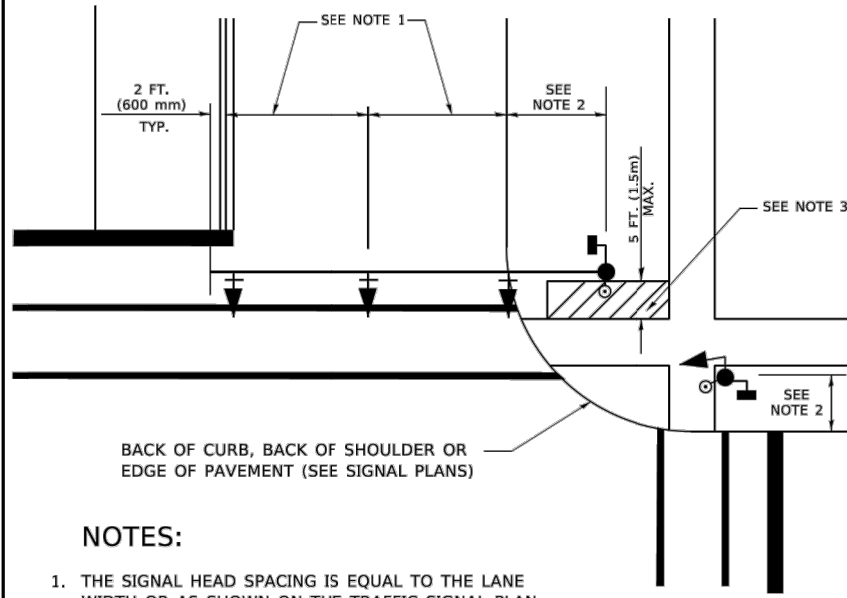
NOTE B: THE TRAFFIC SIGNAL CONTROLLER AND CABINET SHALL BE ECONOLITE TO MATCH THE EXISTING SYSTEM.

MODEL: D:\bldg - Tl\Byzche Advisory Committee\COMAD\Yr-2020\... FILE NAME: 19-00212-00-11-001-001.dwg

FILE NAME = Buffalo_Creek_Design2019.dwg	USER NAME = nhatan	DESIGNED -	REVISED -	COOK COUNTY DEPARTMENT OF TRANSPORTATION & HIGHWAYS BUFFALO CREEK MULTI-USE TRAIL EXTENSION COOK COUNTY TRAFFIC SIGNAL IMPROVEMENTS SCALE: NONE SHEET OF SHEETS STA. TO STA.	F.A.U. RTE. SECTION COUNTY TOTAL SHEETS SHEET NO. 19-00212-00-11 COOK 29 15 CONTR.ACTNO. 61.632 ILLINOIS FED. AID PROJECT
PLOT SCALE = 1:0000' / in.	CHECKED -	REVISED -			
PLOT DATE = 2/19/2020	DATE -	REVISED -			

TRAFFIC SIGNAL MAST ARM AND SIGNAL POST

MAST ARM MOUNTED SIGNALS IN EXISTING, PROPOSED OR FUTURE SIDEWALK/BICYCLE PATH AREA. INTERSECTION SHOWN WITH PEDESTRIAN SIGNALS AND PEDESTRIAN PUSHBUTTON DETECTORS.

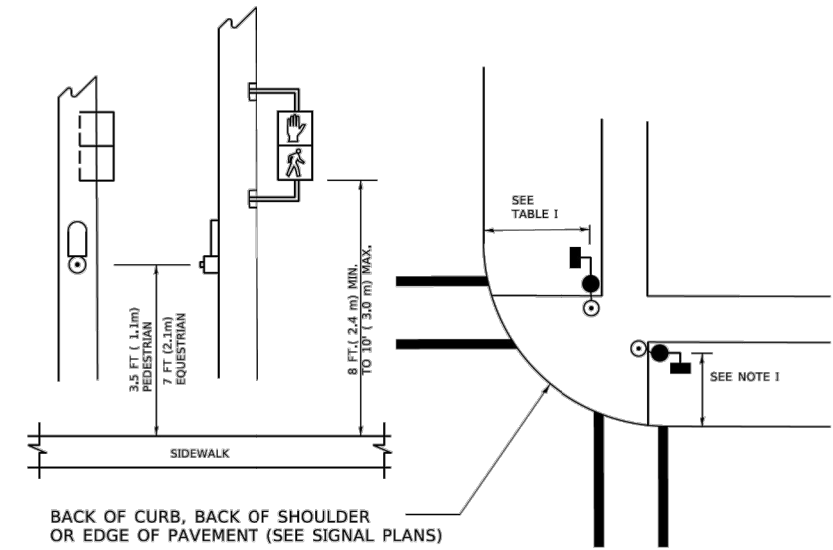


BACK OF CURB, BACK OF SHOULDER OR EDGE OF PAVEMENT (SEE SIGNAL PLANS)

NOTES:

1. THE SIGNAL HEAD SPACING IS EQUAL TO THE LANE WIDTH OR AS SHOWN ON THE TRAFFIC SIGNAL PLAN.
2. REFER TO THE TRAFFIC SIGNAL EQUIPMENT OFFSET TABLE.
3. PROVIDE A LEVEL ALL-WEATHER SURFACE (CONCRETE SIDEWALK, ASPHALT BICYCLE PATH SURFACE OR MATCHING MATERIAL TO THE ADJACENT SURFACE) UP TO THE MAST ARM SHAFT OR THE SIGNAL POST.
4. THE FACE OF THE PEDESTRIAN PUSHBUTTON SHALL BE PARALLEL TO THE CROSSWALK TO BE USED.
5. THE LOCATIONS AND INSTALLATION OF PEDESTRIAN SIGNAL HEADS AND PEDESTRIAN PUSHBUTTONS SHALL MEET THE REQUIREMENTS OF THE MUTCD AND INFORMATION FOUND IN THE "AMERICANS WITH DISABILITIES ACT ACCESSIBILITY GUIDELINES FOR BUILDINGS AND FACILITIES."

PEDESTRIAN SIGNAL POST AND PEDESTRIAN PUSH BUTTON POST

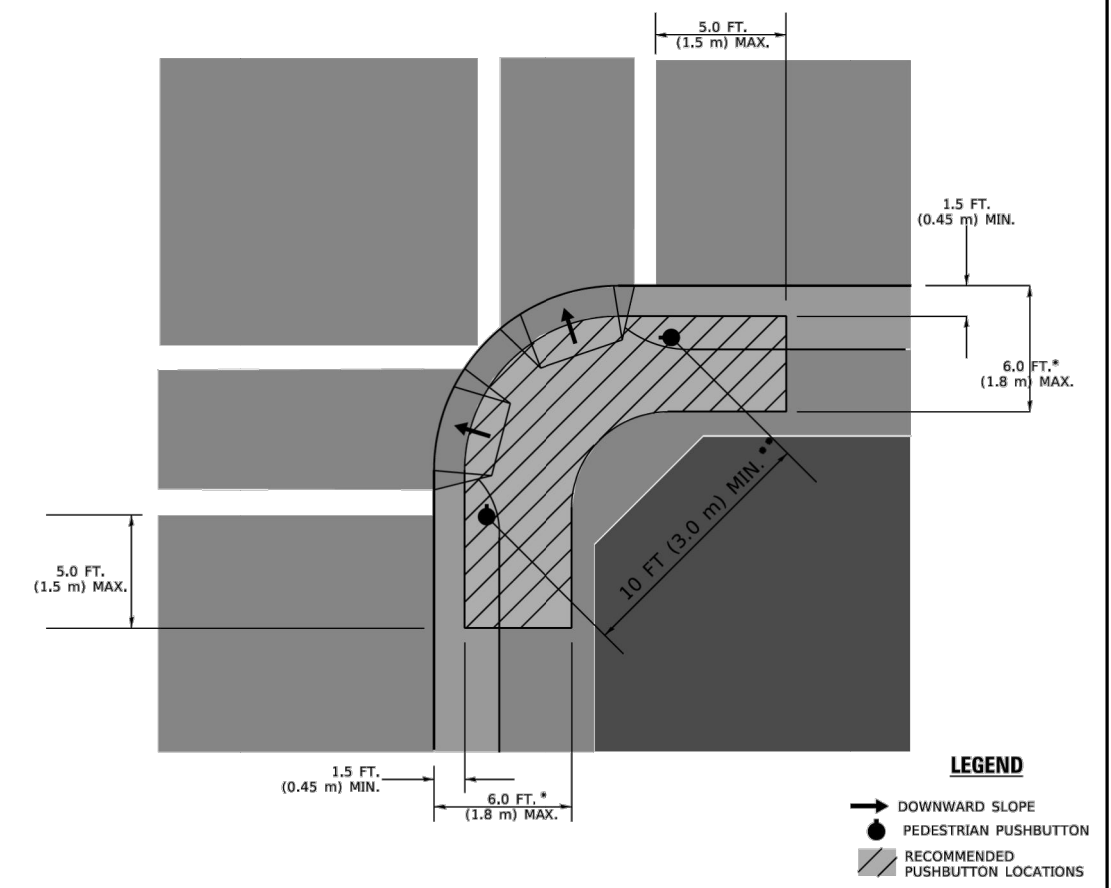


BACK OF CURB, BACK OF SHOULDER OR EDGE OF PAVEMENT (SEE SIGNAL PLANS)

NOTES:

1. REFER TO THE TRAFFIC SIGNAL EQUIPMENT OFFSET TABLE.
2. PROVIDE A LEVEL ALL-WEATHER SURFACE (CONCRETE SIDEWALK, ASPHALT BICYCLE PATH SURFACE OR MATCHING MATERIAL TO THE ADJACENT SURFACE) UP TO THE PEDESTRIAN SIGNAL POST OR THE PEDESTRIAN PUSH BUTTON POST.
3. THE FACE OF THE PEDESTRIAN PUSHBUTTON SHALL BE PARALLEL TO THE CROSSWALK TO BE USED.
4. THE LOCATIONS AND INSTALLATION OF PEDESTRIAN SIGNAL HEADS AND PEDESTRIAN PUSHBUTTONS SHALL MEET THE REQUIREMENTS OF THE MUTCD AND INFORMATION FOUND IN THE "AMERICANS WITH DISABILITIES ACT ACCESSIBILITY GUIDELINES FOR BUILDINGS AND FACILITIES."

RECOMMENDED PUSHBUTTON LOCATIONS



* WHERE THERE ARE CONSTRAINTS THAT MAKE IT IMPRACTICAL TO PLACE THE PEDESTRIAN PUSHBUTTON BETWEEN 1.5 FT (0.45 m) AND 6 FT (1.8 m) FROM THE EDGE OF THE CURB, SHOULDER, OR PAVEMENT, IT SHOULD NOT BE FURTHER THAN 10 FT (3 m) FROM THE EDGE OF CURB, SHOULDER, OR PAVEMENT.

** WHERE THERE ARE CONSTRAINTS ON A PARTICULAR CORNER THAT MAKE IT IMPRACTICAL TO PROVIDE THE 10 FT (3 m) SEPERATION BETWEEN THE TWO PEDESTRIAN PUSHBUTTONS, THE PUSHBUTTONS MAY BE PLACED CLOSER TOGETHER OR ON THE SAME POLE.

NOTES:

1. PEDESTRIAN SIGNAL HEADS SHALL BE MOUNTED WITH THE BOTTOM OF THE SIGNAL HOUSING INCLUDING BRACKETS NOT LESS THAN 8 FT (2.4 m) OR MORE THAN 10 FT (3 m) ABOVE SIDEWALK LEVEL, AND SHALL BE POSITIONED AND ADJUSTED TO PROVIDE MAXIMUM VISIBILITY AT THE BEGINNING OF THE CONTROLLED CROSSWALK.
2. THE BOTTOM OF THE SIGNAL HOUSING (INCLUDING BRACKETS) OF A VEHICULAR SIGNAL FACE THAT IS NOT LOCATED OVER A HIGHWAY SHALL BE AT LEAST 8 FT (2.4 m) BUT NOT MORE THAN 19 FT (5.8 m) ABOVE THE SIDEWALK OR, IF THERE IS NO SIDEWALK, ABOVE THE PAVEMENT GRADE AT THE CENTER OF THE ROADWAY.
3. THE BOTTOM OF THE SIGNAL HOUSING AND ANY RELATED ATTACHMENTS TO A SIGNAL FACE LOCATED OVER ANY PORTION OF A HIGHWAY SHALL BE ACCORDING TO CURRENT STATE STANDARDS 877001, 877002, 877006, 877011 AND 877012 WITH A MINIMUM OF 16 FT (5.0 m) AND A MAXIMUM OF 18 FT. (5.5 m) FROM THE HIGHEST POINT OF PAVEMENT.
4. THE BOTTOM OF THE TEMPORARY SPAN WIRE MOUNTED SIGNAL HOUSING AND ANY RELATED ATTACHMENTS TO A SIGNAL FACE LOCATED OVER ANY PORTION OF A HIGHWAY SHALL BE ACCORDING TO CURRENT STATE STANDARD 880001 WITH A MINIMUM OF 17 FT (5.18 m) FROM THE HIGHEST POINT OF PAVEMENT.
5. THE TOP OF THE SIGNAL HOUSING OF A SIGNAL FACE LOCATED OVER ANY PORTION OF A HIGHWAY SHALL NOT BE MORE THAN 25.6 FT (7.8 m) ABOVE THE PAVEMENT.

TRAFFIC SIGNAL EQUIPMENT OFFSET

TRAFFIC SIGNAL EQUIPMENT	COMBINATION CONCRETE CURB AND GUTTER (MINIMUM DISTANCE FROM BACK OF CURB TO CENTERLINE OF FOUNDATION)	SHOULDER/NON-CURBED AREA (MINIMUM DISTANCE FROM EDGE OF PAVEMENT TO CENTERLINE OF FOUNDATION)
TRAFFIC SIGNAL MAST ARM POLE	6 FT (1.8m)	SHOULDER WIDTH + 2 FT (0.6m), MINIMUM 10 FT (3.0m)
TRAFFIC SIGNAL POST	4 FT (1.2m)	SHOULDER WIDTH + 2 FT (0.6m), MINIMUM 10 FT (3.0m)
PEDESTRIAN SIGNAL POST	4 FT (1.2m)	SHOULDER WIDTH + 2 FT (0.6m), MINIMUM 10 FT (3.0m)
PEDESTRIAN PUSHBUTTON POST	4 FT (1.2m)	SHOULDER WIDTH + 2 FT (0.6m), MINIMUM 10 FT (3.0m)
TEMPORARY WOOD POLE	6 FT (1.8m)	SHOULDER WIDTH + 2 FT (0.6m), MINIMUM 10 FT (3.0m)
CONTROLLER CABINET	6 FT (1.8m) MINIMUM DISTANCE SEE NOTE 2	SHOULDER WIDTH + 6 FT (1.8m), MINIMUM 16 FT (4.9m) SEE NOTE 3.
SERVICE INSTALLATION, GROUND MOUNT	6 FT (1.8m) MINIMUM DISTANCE SEE NOTE 2	SHOULDER WIDTH + 6 FT (1.8m), MINIMUM 16 FT (4.9m) SEE NOTE 3.

NOTES:

1. CONTACT THE "AREA TRAFFIC SIGNAL MAINTENANCE AND OPERATIONS ENGINEER" FOR ASSISTANCE IN LOCATING THE TRAFFIC SIGNAL EQUIPMENT WHEN THERE ARE CONFLICTS WITH DITCHES OR THE MINIMUM OFFSET DISTANCES CANNOT BE MET.
2. MINIMUM DISTANCE FROM THE BACK OF CURB TO THE ROADWAY SIDE OF THE FOUNDATION.
3. MINIMUM DISTANCE FROM THE EDGE OF PAVEMENT TO THE ROADWAY SIDE OF THE FOUNDATION.
4. ANY CHANGES TO THE OFFSETS OF THE FOUNDATIONS, FROM THE MINIMUM DISTANCES LISTED IN THE "TRAFFIC SIGNAL EQUIPMENT OFFSET" CHART AND THE TRAFFIC SIGNAL INSTALLATION PLAN, COULD EFFECT THE PLACEMENT OF THE SIGNAL HEADS, PEDESTRIAN SIGNAL HEADS AND THE PEDESTRIAN PUSHBUTTONS. THE SIGNAL HEAD PLACEMENT ON THE MAST ARMS SHALL REMAIN AS PER THE TRAFFIC SIGNAL INSTALLATION PLAN AND THE "TRAFFIC SIGNAL MAST ARM AND SIGNAL POST" DETAIL ABOVE. THE PROPOSED MAST ARM LENGTHS MAY NEED TO BE REVISED TO MEET THE ABOVE REQUIREMENTS. THE PEDESTRIAN SIGNAL HEADS AND PEDESTRIAN PUSHBUTTONS MUST MEET THE REQUIREMENTS UNDER THE DETAILS ON THIS SHEET.

MODEL: Default; T:\Bicycle Advisory Commission\CMO\FY-2008\FILE NAME: pwr\118484\BIDDING\TECH\Roads\gov\PWD\DOT\Documents\DOT - Offices\District 1\Projects\0616\SH22\234\CAD\Drawings\CAD\sheet1505.dgn

FILE NAME = Buffalo_Creek_Design2019.dwg

USER NAME = footemj
 PLOT SCALE = 50,0000 ' / in.
 PLOT DATE = 3/4/2019

DESIGNED -
 DRAWN -
 CHECKED -
 DATE -

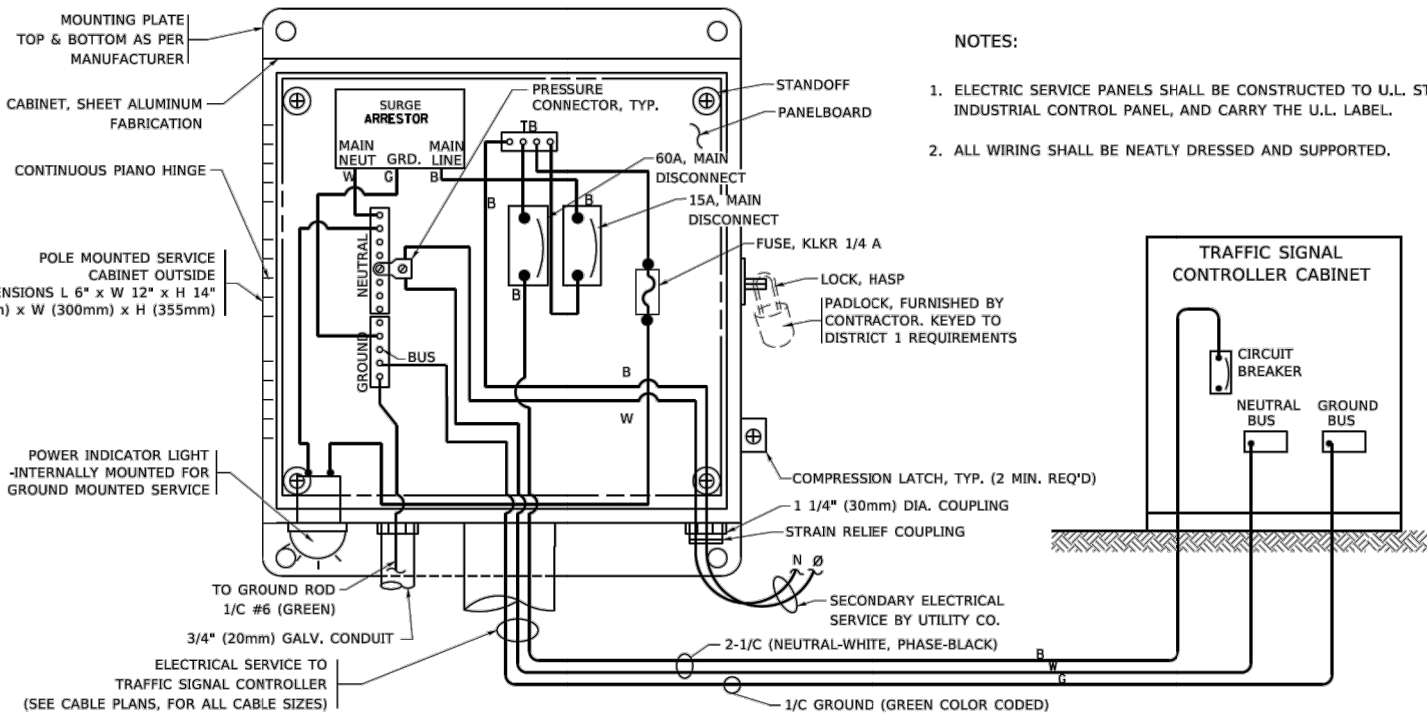
REVISED -
 REVISED -
 REVISED -
 REVISED -

**STATE OF ILLINOIS
 DEPARTMENT OF TRANSPORTATION**

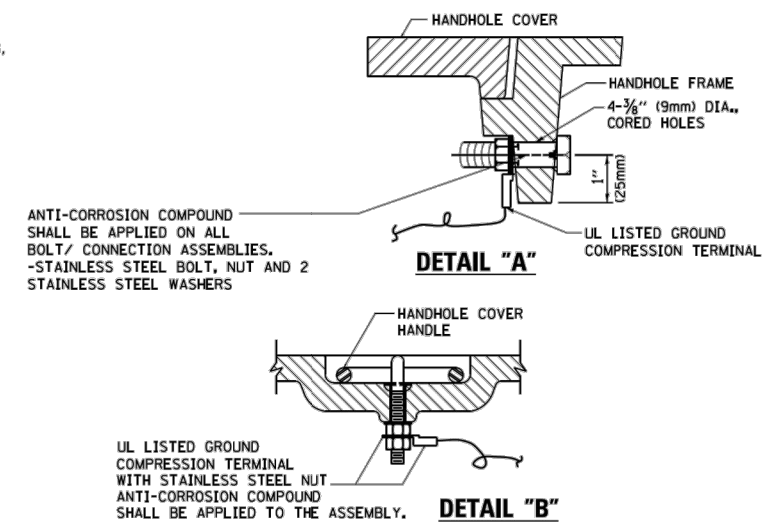
**DISTRICT ONE
 STANDARD TRAFFIC SIGNAL DESIGN DETAILS**

SCALE: NONE SHEET 3 OF 7 SHEETS STA. TO STA.

F.A.U. RTE.	SECTION	COUNTY	TOTAL SHEETS	SHEET NO.
	19-00212-00-BT	COOK	29	18
TS-05		CONTRACT NO.	61652	
ILLINOIS FED. AID PROJECT				

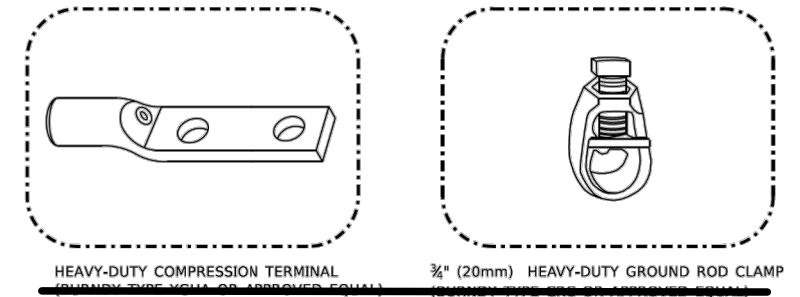


ELECTRICAL SERVICE - PANEL DIAGRAM (TYPICAL FOR POLE AND GROUND MOUNTED SERVICE)
SERVICE INSTALLATION POLE MOUNT (SHOWN)
 (NOT TO SCALE)



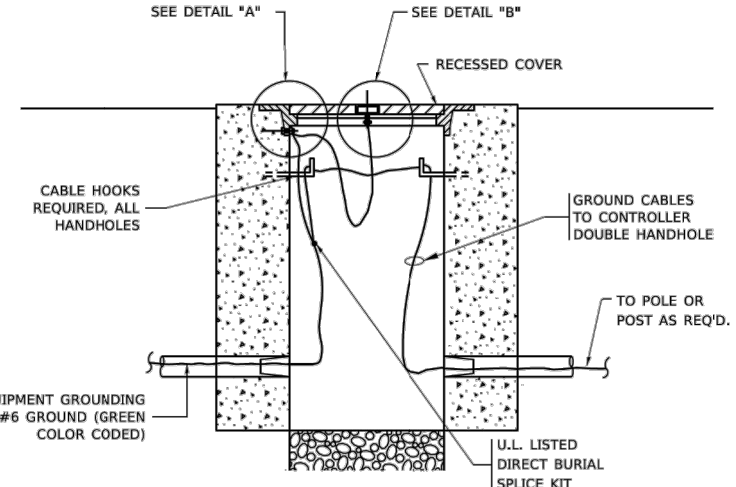
NOTES:
GROUNDING SYSTEM

- THE GROUNDING SYSTEM SHALL CONSIST OF AN INSULATED CONDUCTOR TYPE XLP, NO. 6 A.W.G., STRANDED COPPER TO BE INSTALLED IN RACEWAYS. THE GROUNDING CABLE SHALL BE INSTALLED IN A CONTINUOUS MANNER AS SHOWN ON THE CABLE PLAN PROVIDED. ALL GROUNDING CONDUCTORS SHALL BE BONDED TO METAL ENCLOSURE (HANDHOLE, POST, MAST ARM, CONTROLLER, ETC.). GROUND ROD SHALL BE 3/4" DIA. x 10'-0" (20mm x 3.0m) LONG, COPPER CLAD. ONE GROUND ROD SHALL BE INSTALLED AT ALL POST FOUNDATIONS, POLE FOUNDATIONS, CONTROLLER CABINET FOUNDATION AND ELECTRICAL SERVICE INSTALLATION AS INDICATED ON THE CABLE PLAN. IF THERE ARE ANY SPECIAL CONDITIONS SUCH AS SUB-SURFACE CONDITIONS OR INSTALLATION PROBLEMS, THE RESIDENT ENGINEER SHALL BE NOTIFIED OR CONTACT THE BUREAU OF TRAFFIC, ILLINOIS DEPARTMENT OF TRANSPORTATION DISTRICT ONE AT (847) 705-4139.
- THE NEUTRAL CONDUCTOR AND THE GROUND CONDUCTOR SHALL BE CONNECTED IN THE SERVICE INSTALLATION. AT NO OTHER POINT IN THE TRAFFIC SIGNAL SYSTEM SHALL THE NEUTRAL AND GROUND CONDUCTORS BE CONNECTED.
- ALL EQUIPMENT GROUNDING CONDUCTORS SHALL TERMINATE AT THE GROUND BUS IN THE CONTROLLER CABINET.
- THE CONTRACTOR SHALL PROVIDE A GROUND CABLE WITH CONNECTORS BETWEEN THE HANDHOLE COVER AND HANDHOLE FRAME.

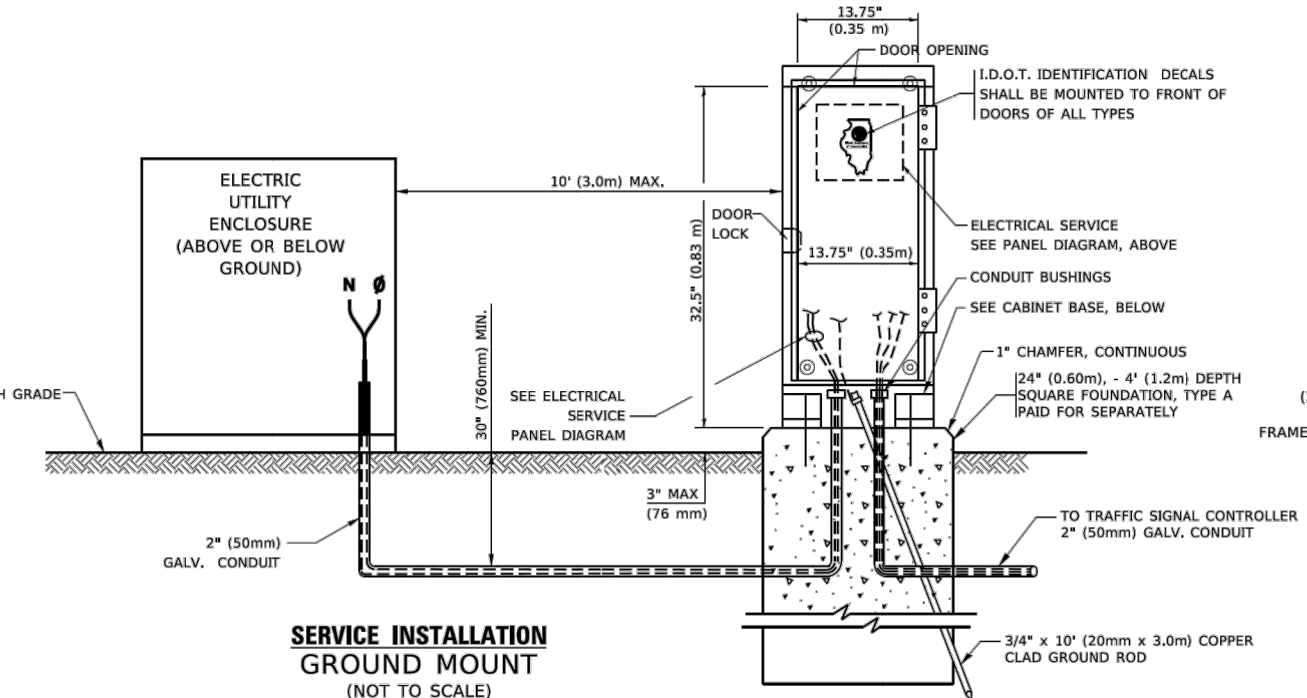
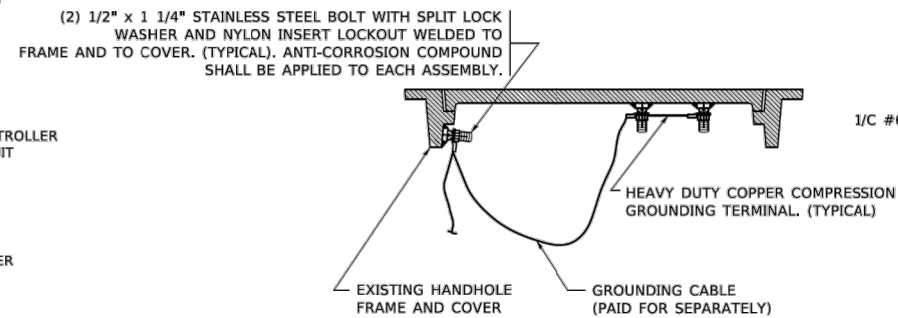


NOTES:

- ALL CLAMPS SHALL BE BRONZE OR COPPER, UL APPROVED.
- GROUND CABLE SHALL BE LOOPED OVER HOOKS IN THE HANDHOLES 6.5' (2.0m) SLACK SHALL BE PROVIDED IN SINGLE HANDHOLES 13' (4.0m) OF SLACK SHALL BE PROVIDED IN DOUBLE HANDHOLES. 5' (1.4m) OF SLACK SHALL BE PROVIDED BETWEEN FRAME AND COVER.

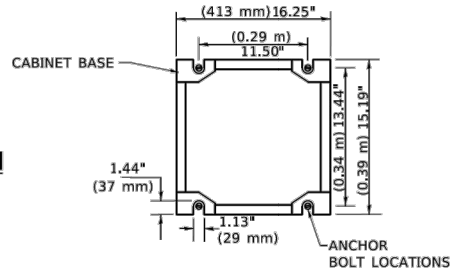


EXISTING HANDHOLE COVER & FRAME - GROUNDING DETAIL
 (NOT TO SCALE)



SERVICE INSTALLATION GROUND MOUNT
 (NOT TO SCALE)

CABINET - BASE BOLT PATTERN
 (NOT TO SCALE)



MODEL Default: T:\Bicycle Advisory Commission\CAQ\FY-2008\FILE NAME: pvt\11084EBID\NTEG\Illinois.pvt\DOT\Documents\DOT Office\District 1\Projects\Dist1\222234\CADData\CAQ\sheet1505.dgn

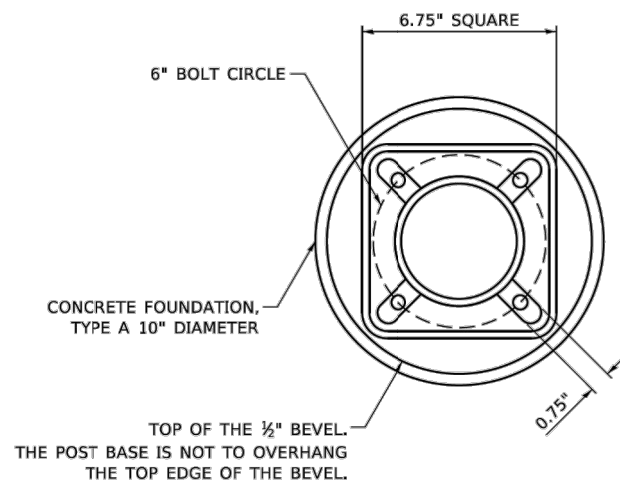
FILE NAME = Buffalo_Creek_Design2019.dwg	USER NAME = footejm	DESIGNED -	REVISED -
PLOT SCALE = 50,0000' / in.	CHECKED -	REVISOR -	REVISOR -
PLOT DATE = 3/4/2019	DATE -	REVISOR -	REVISOR -

STATE OF ILLINOIS
DEPARTMENT OF TRANSPORTATION

DISTRICT ONE			
STANDARD TRAFFIC SIGNAL DESIGN DETAILS			
SCALE: NONE	SHEET 4	OF 7 SHEETS	STA. TO STA.

F.A.U. RTE.	SECTION	COUNTY	TOTAL SHEETS	SHEET NO.
	19-00212-00-BT	COOK	29	19
TS-05		CONTRACT NO.	61652	
ILLINOIS FED. AID PROJECT				

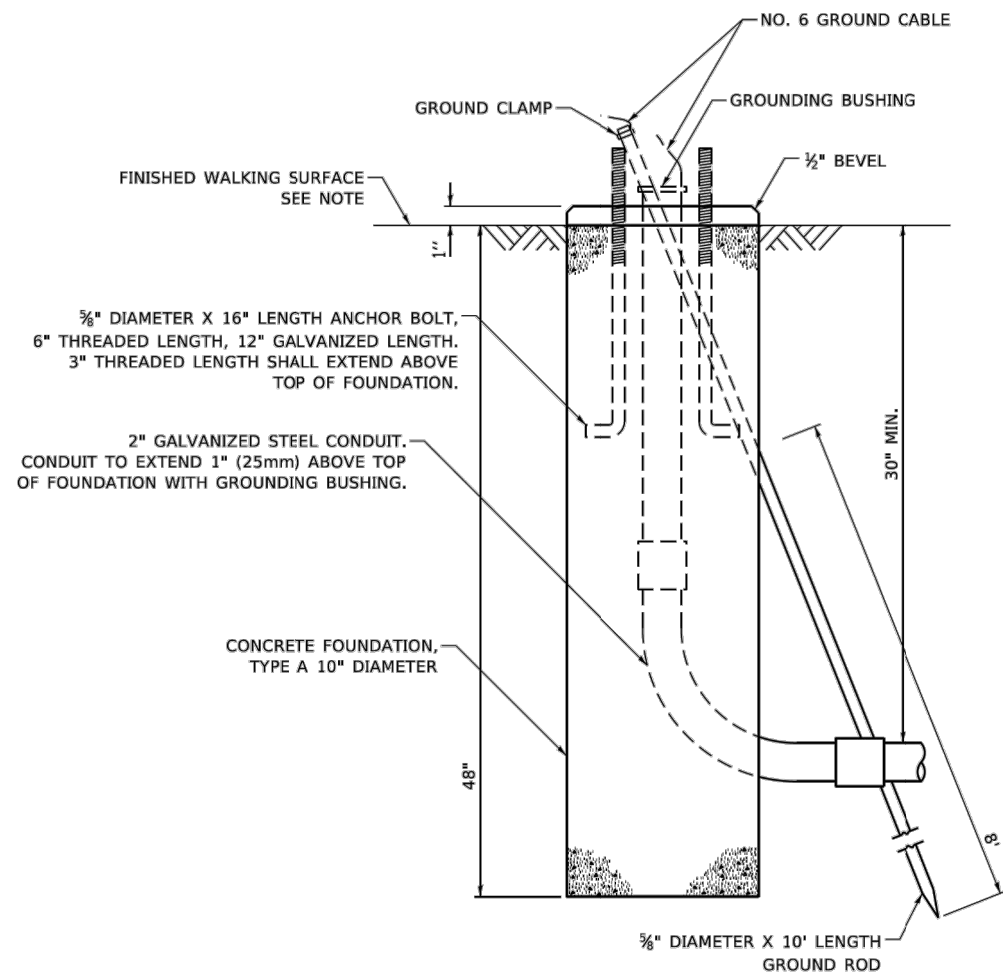




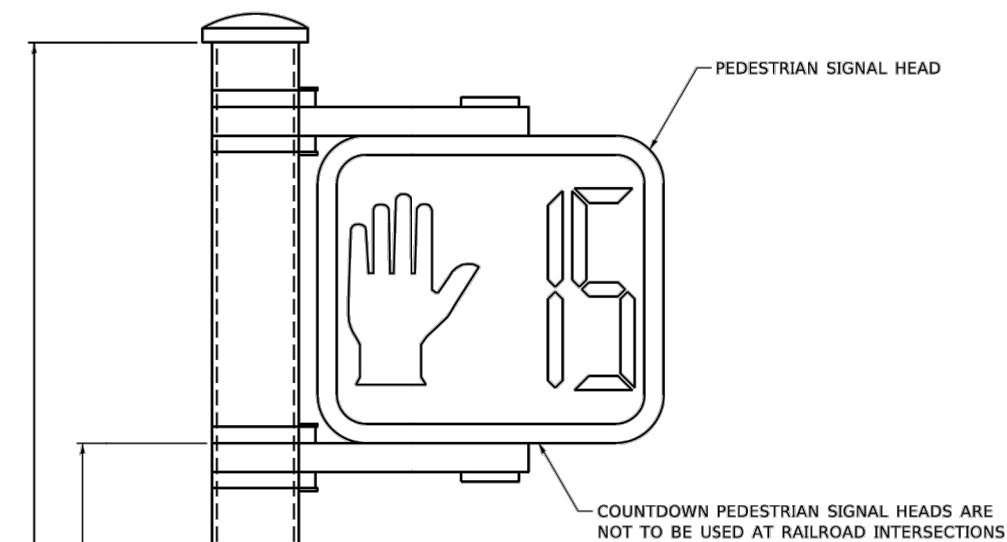
BOLT PATTERN

NOTE:

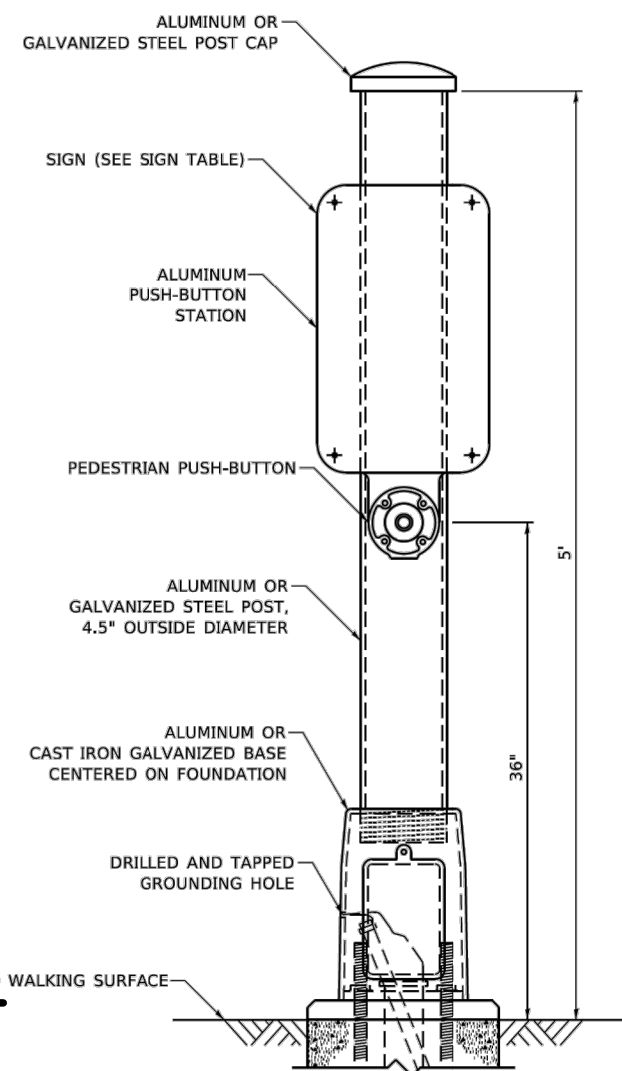
1. IF THE PEDESTRIAN SIGNAL POST FOUNDATION IS INSTALLED WITHIN OR BEHIND A BARRIER CURB, THE TOP OF THE FOUNDATION SHALL BE INSTALLED FLUSH WITH THE TOP OF THE BARRIER CURB.



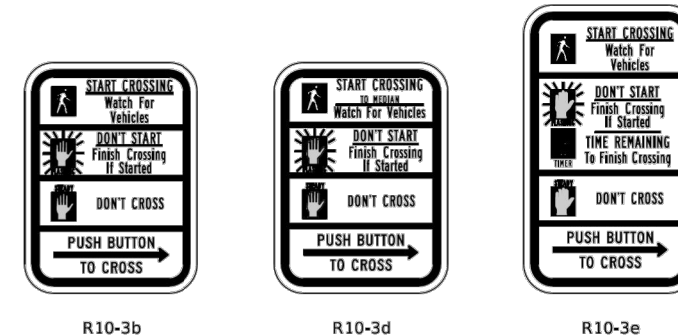
**CONCRETE FOUNDATION,
TYPE A 10-INCH DIAMETER**



PEDESTRIAN SIGNAL POST, 10 FT.



PEDESTRIAN SIGNAL POST, 5 FT.



SIGN TABLE

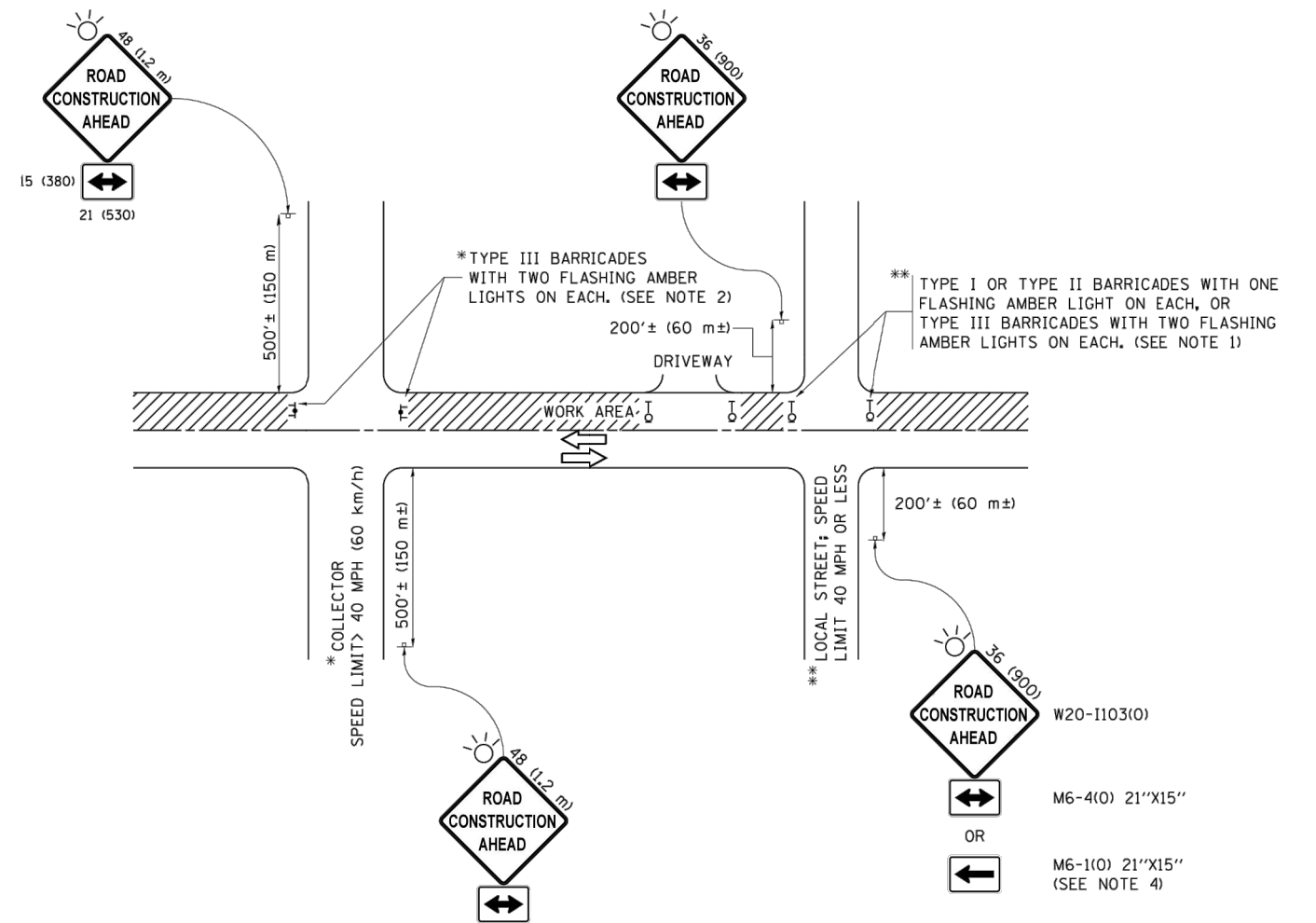
SIGN	DIMENSIONS
R10-3b (RAILROAD ONLY)	9" X 12"
R10-3d (RAILROAD ONLY)	9" X 12"
R10-3e	9" X 15"

NOTES:

1. THE SIGN PANELS SHALL BE TYPE AP SHEETING.
2. THE ARROW ON SIGNS FOR PUSH-BUTTONS SERVING TWO DIRECTIONS ON THE SAME PHASE SHALL BE BI-DIRECTIONAL.
3. THE SIGN FOR DUAL-CALL PUSH-BUTTONS SHALL HAVE NO ARROW.

MODEL: Default; T:\Bicycle Advisory Commission\CAD\FY-2008\FILE NAME: SWIP\Design\00ant11_01\01\pedestrianSignalPost.dgn

FILE NAME = Buffalo_Creek_Design2019.dwg	USER NAME = plascencia1	DESIGNED - IP	REVISED -	STATE OF ILLINOIS DEPARTMENT OF TRANSPORTATION	DISTRICT ONE STANDARD TRAFFIC SIGNAL DESIGN DETAILS	F.A.U. RTE.	SECTION	COUNTY	TOTAL SHEETS	SHEET NO.
PLOT SCALE = 100,0000' / in.	CHECKED - LP	REVISIED -	REVISIED -			19-00212-00-BT	COOK	29	22	
PLOT DATE = 4/10/2019	DATE - 10/15/2018	REVISIED -	REVISIED -			TS-05		CONTRACT NO. 61652		
						SCALE: NTS	SHEET NO. 7 OF 7 SHEETS	STA.	TO STA.	ILLINOIS FED. AID PROJECT



NOTES:

1. SIDE ROAD WITH A SPEED LIMIT OF 40 MPH (60 km/h) OR LESS AS SHOWN ON THE DRAWING AND AS DIRECTED BY THE ENGINEER:
 - a) ONE "ROAD CONSTRUCTION AHEAD" SIGN 36 x 36 (900x900) WITH A FLASHER MOUNTED ON IT APPROXIMATELY 200' (60 m) IN ADVANCE OF THE MAIN ROUTE.
 - b) THE CLOSED PORTION OF THE MAIN ROUTE SHALL BE PROTECTED BY BLOCKING WITH TYPE I, TYPE II OR TYPE III BARRICADES, 1/3 OF THE CROSS SECTION OF THE CLOSED PORTION.
2. SIDE ROAD WITH A SPEED LIMIT GREATER THAN 40 MPH (60 km/h) AS SHOWN ON THE DRAWING AND AS DIRECTED BY THE ENGINEER:
 - a) ONE "ROAD CONSTRUCTION AHEAD" SIGN 48 x 48 (1.2 m x 1.2 m) WITH A FLASHER MOUNTED ON IT APPROXIMATELY 500' (150 m) IN ADVANCE OF THE MAIN ROUTE.
 - b) THE CLOSED PORTION OF THE MAIN ROUTE SHALL BE PROTECTED BY BLOCKING WITH TYPE III BARRICADES, 1/2 OF THE CROSS SECTION OF THE CLOSED PORTION.
3. CONES MAY BE SUBSTITUTED FOR BARRICADES OR DRUMS AT HALF THE SPACING DURING DAY OPERATIONS. CONES SHALL BE A MINIMUM OF 28 (710) IN HEIGHT.
4. WHEN THE SIDE ROAD LIES BETWEEN THE BEGINNING OF THE MAINLINE SIGNING AND THE WORK ZONE, A SINGLE HEADED ARROW (M6-1) SHALL BE USED IN LIEU OF THE DOUBLE HEADED ARROW (M6-4).
5. WHEN WORK IS BEING PERFORMED ON A SIDE ROAD OR DRIVEWAY, FOLLOW THE APPLICABLE STANDARD(S). THE DIRECTIONAL ARROW (M6-1 OR M6-4) SHALL BE COVERED OR REMOVED WHEN NO LONGER CONSISTENT WITH THE TRAFFIC CONTROL SET-UP.
6. ADVANCE WARNING SIGNS ARE TO BE OMITTED ON DRIVEWAYS UNLESS OTHERWISE SPECIFIED IN THE PLANS OR BY THE ENGINEER.
7. THE TRAFFIC CONTROL AND PROTECTION FOR SIDE ROADS, INTERSECTIONS, AND DRIVEWAYS SHALL BE INCLUDED IN THE COST OF SPECIFIED TRAFFIC CONTROL STANDARDS OR ITEMS.

All dimensions are in inches (millimeters) unless otherwise shown.

T:\Bicycle Advisory Commission\CMAQ\FY-2008\

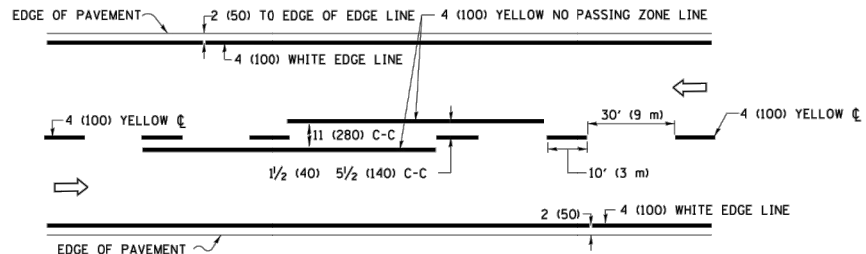
FILE NAME =	USER NAME = footemj	DESIGNED - L.H.A.	REVISED - A. HOUSEH 10-15-96
PROJECT =	PROJECT =	DRAWN -	REVISED - T. RAMMACHER 01-06-00
SCALE = 50.000' / 1" =	CHECKED -	DATE - 06-89	REVISED - A. SCHUETZE 07-01-13
PLOT DATE = 9/15/2016	DATE - 06-89	REVISED - A. SCHUETZE 09-15-16	

**STATE OF ILLINOIS
DEPARTMENT OF TRANSPORTATION**

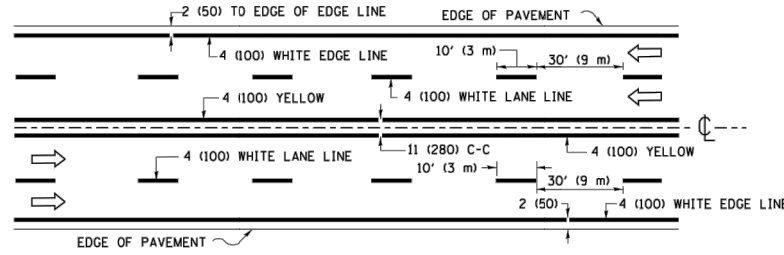
**TRAFFIC CONTROL AND PROTECTION FOR
SIDE ROADS, INTERSECTIONS, AND DRIVEWAYS**

SCALE: NONE SHEET 1 OF 1 SHEETS STA. TO STA.

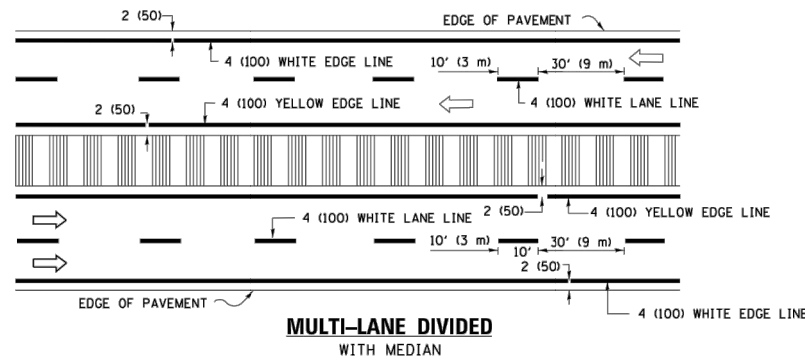
F.A. RTE.	SECTION	COUNTY	TOTAL SHEETS	SHEET NO.
			29	23
TC-10			CONTRACT NO.	61652
ILLINOIS FED. AID PROJECT				



2-LANE ROADWAY

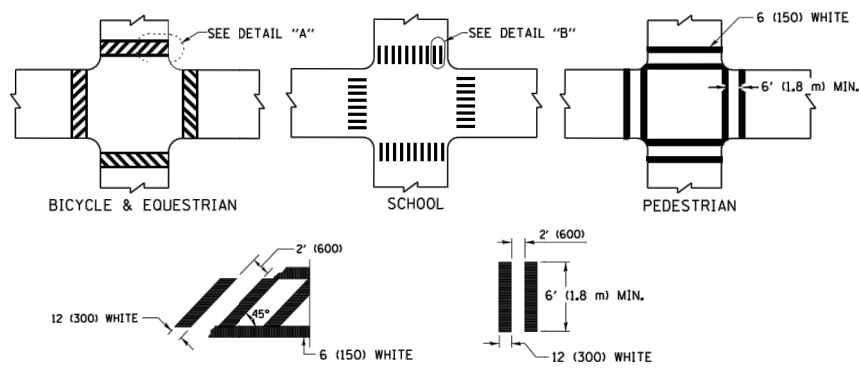


MULTI-LANE UNDIVIDED



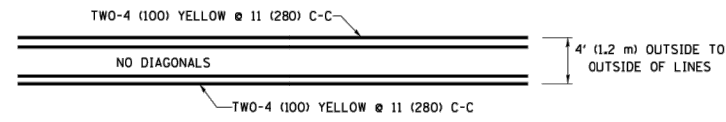
MULTI-LANE DIVIDED WITH MEDIAN

TYPICAL LANE AND EDGE LINE MARKING

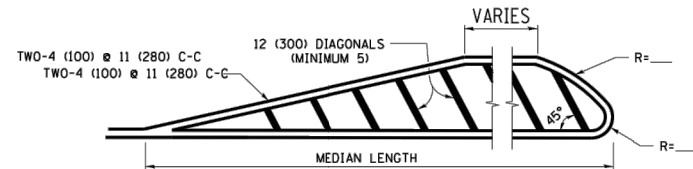


DETAIL "A" DETAIL "B" TYPICAL CROSSWALK MARKING

* MARKINGS SHALL BE INSTALLED PARALLEL TO THE CENTERLINE OF THE ROAD WHICH IT CROSSES

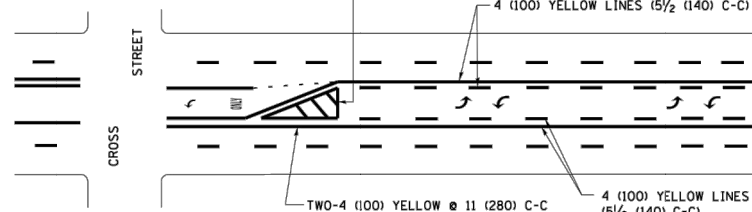


4' (1.2 m) WIDE MEDIANS ONLY

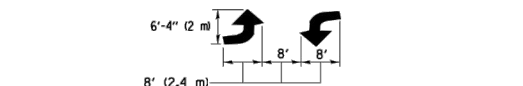


DIAGONAL LINE SPACING: 50' (15 m) C-C (LESS THAN 30MPH (50 km/h))
75' (25 m) C-C 30MPH (50 km/h) TO 45MPH (70 km/h)
150' (45 m) C-C (MORE THAN 45MPH (70 km/h))

MEDIANS OVER 4' (1.2 m) WIDE

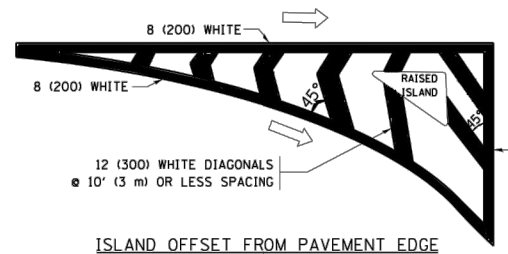


MEDIAN WITH TWO-WAY LEFT TURN LANE TYPICAL PAINTED MEDIAN MARKING

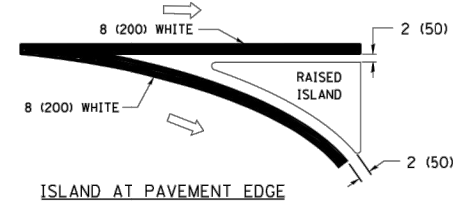


FULL SIZE LETTERS 8" (2.4 m) AND ARROWS SHALL BE USED.
AREA = 15.6 SQ. FT. (1.5 m²) ONLY AREA = 20.8 SQ. FT. (1.9 m²)
* TURN LANES IN EXCESS OF 400' (120 m) IN LENGTH MAY HAVE AN ADDITIONAL SET OF ARROW - "ONLY" INSTALLED MIDWAY BETWEEN THE OTHER TWO SETS OF ARROW - "ONLY".

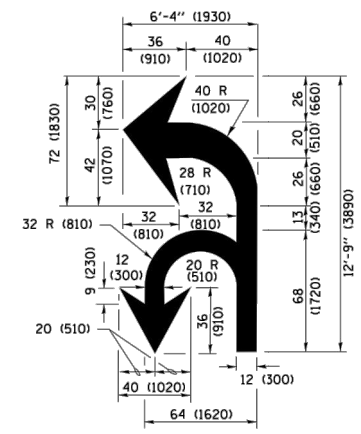
TYPICAL LEFT (OR RIGHT) TURN LANE TYPICAL TURN LANE MARKING



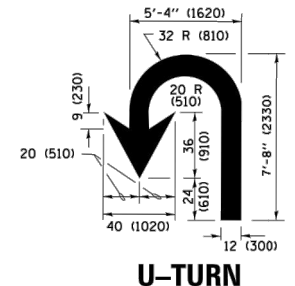
ISLAND OFFSET FROM PAVEMENT EDGE



ISLAND AT PAVEMENT EDGE TYPICAL ISLAND MARKING



COMBINATION LEFT AND U-TURN



U-TURN

LANE REDUCTION TRANSITION
* LANE REDUCTION ARROWS REQUIRED AT SPEEDS OF 45 MPH OR GREATER OR WHEN SPECIFIED IN PLANS.

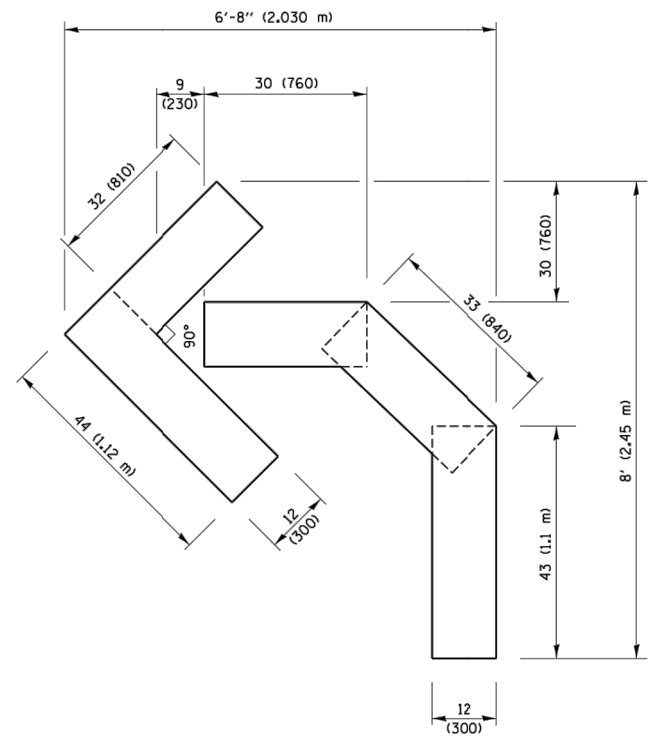
D(FT)	SPEED LIMIT
345	30
425	35
500	40
580	45
665	50
750	55

TYPE OF MARKING	WIDTH OF LINE	PATTERN	COLOR	SPACING /REMARKS
CENTERLINE ON 2 LANE PAVEMENT	4 (100)	SKIP-DASH	YELLOW	10' (3 m) LINE WITH 30' (9 m) SPACE
CENTERLINE ON MULTI-LANE UNDIVIDED PAVEMENT	2 @ 4 (100)	SOLID	YELLOW	11 (280) C-C
NO PASSING ZONE LINES: FOR ONE DIRECTION FOR BOTH DIRECTIONS	4 (100) 2 @ 4 (100)	SOLID SOLID	YELLOW YELLOW	5/2 (140) C-C FROM SKIP-DASH CENTERLINE 11 (280) C-C OMIT SKIP-DASH CENTERLINE BETWEEN
LANE LINES	4 (100) 5 (125) ON FREEWAYS	SKIP-DASH SKIP-DASH	WHITE WHITE	10' (3 m) LINE WITH 30' (9 m) SPACE
DOTTED LINES (EXTENSIONS OF CENTER, LANE OR TURN LANE MARKINGS)	SAME AS LINE BEING EXTENDED	SKIP-DASH	SAME AS LINE BEING EXTENDED	2' (600) LINE WITH 6' (1.8 m) SPACE
EDGE LINES	4 (100)	SOLID	YELLOW-LEFT WHITE-RIGHT	OUTLINE MEDIANS IN YELLOW
TURN LANE MARKINGS	6 (150) LINE; FULL SIZE LETTERS & SYMBOLS (8' (2.4m))	SOLID	WHITE	SEE TYPICAL TURN LANE MARKING DETAIL
TWO WAY LEFT TURN MARKING	2 @ 4 (100) EACH DIRECTION 8' (2.4m) LEFT ARROW	SKIP-DASH AND SOLID IN PAIRS	YELLOW WHITE	10' (3 m) LINE WITH 30' (9 m) SPACE FOR SKIP-DASH; 5/2 (140) C-C BETWEEN SOLID LINE AND SKIP-DASH LINE SEE TYPICAL TWO-WAY LEFT TURN MARKING DETAIL
CROSSWALK LINES (PEDESTRIAN A. DIAGONALS (BIKE & EQUESTRIAN) B. LONGITUDINAL BARS (SCHOOL))	2 @ 6 (150) 12 (300) @ 45° 12 (300) @ 90°	SOLID SOLID SOLID	WHITE WHITE WHITE	NOT LESS THAN 6' (1.8 m) APART 2' (600) APART SEE TYPICAL CROSSWALK MARKING DETAILS.
STOP LINES	24 (600)	SOLID	WHITE	PLACE 4' (1.2 m) IN ADVANCE OF AND PARALLEL TO CROSSWALK, IF PRESENT, OTHERWISE, PLACE AT DESIRED STOPPING POINT, PARALLEL TO CROSSROAD CENTERLINE, WHERE POSSIBLE
PAINTED MEDIANS	2 @ 4 (100) WITH 12 (300) DIAGONALS @ 45° NO DIAGONALS USED FOR 4' (1.2 m) WIDE MEDIANS	SOLID	YELLOW; TWO WAY TRAFFIC WHITE; ONE WAY TRAFFIC	11 (280) C-C FOR THE DOUBLE LINE. SEE TYPICAL PAINTED MEDIAN MARKING.
GORE MARKING AND CHANNELIZING LINES	8 (200) WITH 12 (300) DIAGONALS @ 45°	SOLID	WHITE	DIAGONALS: 15' (4.5 m) C-C (LESS THAN 30MPH (50 km/h)) 20' (6 m) C-C 30MPH (50 km/h) TO 45MPH (70 km/h) 30' (9 m) C-C (OVER 45MPH (70 km/h))
RAILROAD CROSSING	24 (600) TRANSVERSE LINES; "RR" IS 6' (1.8 m) LETTERS; 16 (400) LINE FOR "X"	SOLID	WHITE	SEE STATE STANDARD 780001 AREA OF: "R"=3.6 SQ. FT. (0.33 m ²) EACH "X"=54.0 SQ. FT. (5.0 m ²)
SHOULDER DIAGONALS (REQUIRED FOR SHOULDERS ≥ 8')	12 (300) @ 45°	SOLID	WHITE - RIGHT YELLOW - LEFT	50' (15 m) C-C (LESS THAN 30MPH (50 km/h)) 75' (25 m) C-C (30 MPH (50 km/h) TO 45MPH (70 km/h)) 150' (45 m) C-C (OVER 45MPH (70 km/h))
U TURN ARROW	SEE DETAIL	SOLID	WHITE	16.3 SF
2 ARROW COMBINATION LEFT AND U TURN	SEE DETAIL	SOLID	WHITE	30.4 SF

FOR FURTHER DETAILS ON PAVEMENT MARKING REFER TO STANDARD SPECIFICATIONS FOR ROAD AND BRIDGE CONSTRUCTION AND STATE STANDARD 780001.

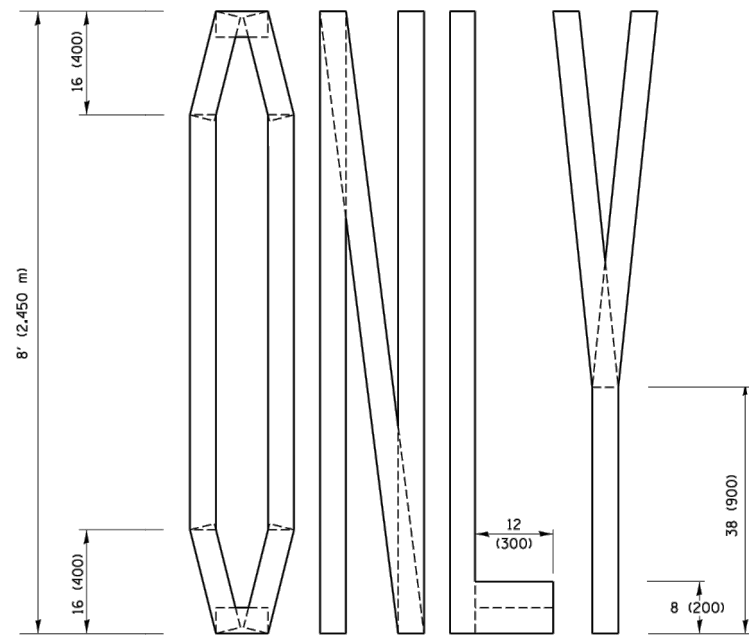
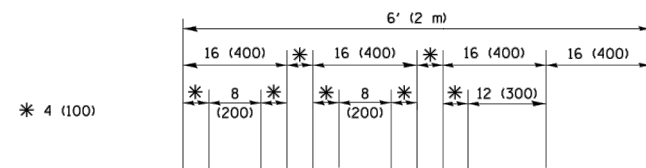
All dimensions are in inches (millimeters) unless otherwise shown.

T:\Bicycle Advisory Commission\CMAD\FY-2008\



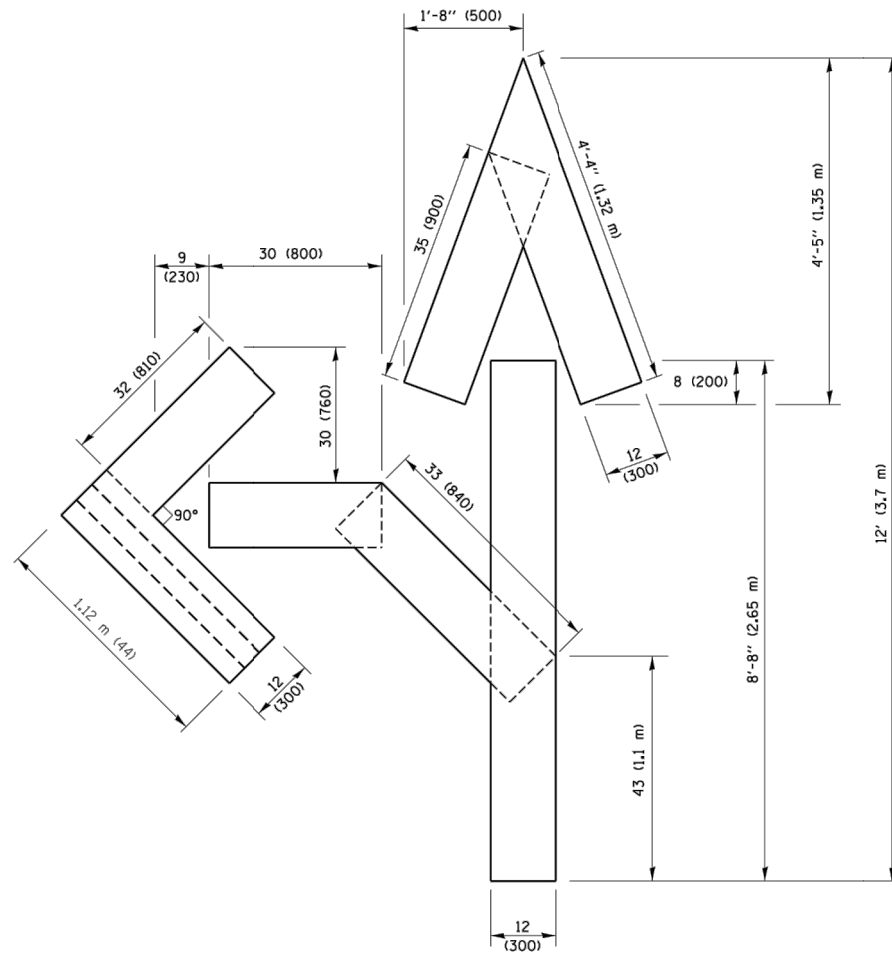
QUANTITY

4 (100) LINE = 45.5 ft. (13.9 m)
15.2 sq. ft. (1.41 sq. m)



QUANTITY

4 (100) LINE = 64.1 ft. (19.5 m)
21.4 sq. ft. (1.99 sq. m)

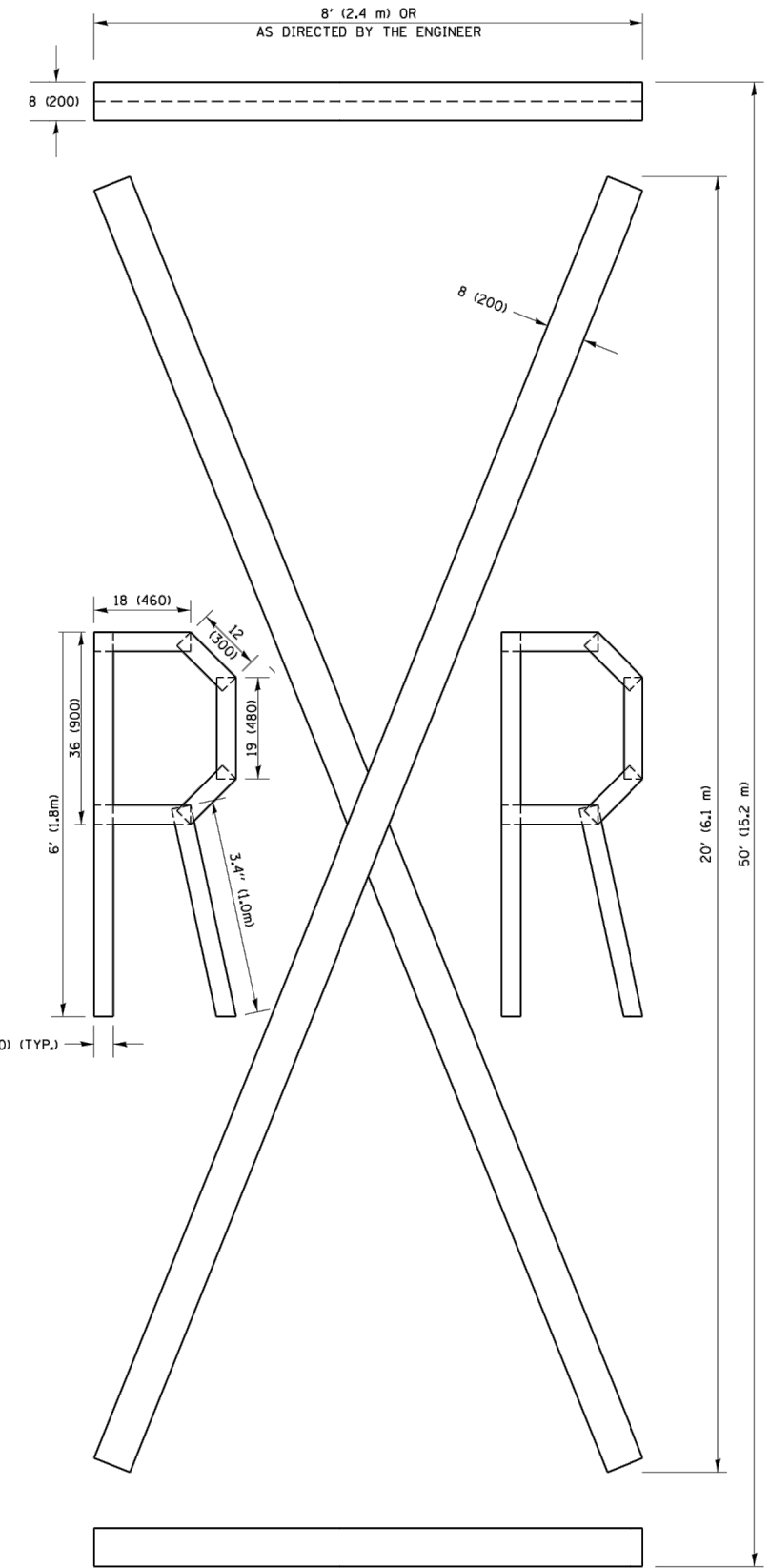


QUANTITY

4 (100) LINE = 82.5 ft. (25.1 m)
27.5 sq. ft. (2.53 sq. m)

NOTE:

ALL QUANTITIES OF PLACEMENT ARE REPRESENTED IN LINEAR FEET OF 4" LINES TO MATCH THE 4" TEMPORARY TAPE PAY ITEM AND REPRESENTS THE TOTAL QUANTITY OF 4" TAPE REQUIRED.



QUANTITY

4 (100) LINE = 225.9 ft. (68.9 m)
75.3 sq. ft. (6.99 sq. m)

All dimensions are in inches (millimeters) unless otherwise shown.

T:\Bicycle Advisory Commission\CMAG\FY-2008\

FILE NAME =	USER NAME = footemj	DESIGNED -	REVISED - T. RAMMACHER 03-02-98
PROJECT =	PROJECT =	DRAWN -	REVISED - E. GOMEZ 08-28-00
PLOT SCALE = 50.0000' / 1"	CHECKED -	REVISED - E. GOMEZ 08-28-00	
PLOT DATE = 9/15/2016	DATE - 09-18-94	REVISED - A. SCHUETZE 09-15-16	

**STATE OF ILLINOIS
DEPARTMENT OF TRANSPORTATION**

SHORT TERM PAVEMENT MARKING LETTERS AND SYMBOLS

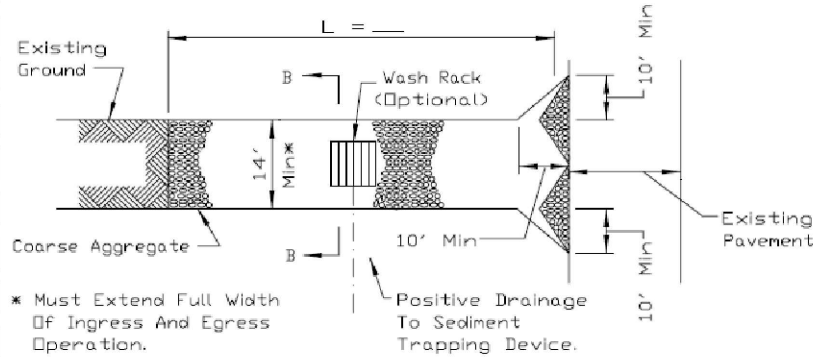
SCALE: NONE SHEET NO. 1 OF 1 SHEETS STA. TO STA.

F.A. RTE.	SECTION	COUNTY	TOTAL SHEETS	SHEET NO.
	TC-16		29	25
FED. ROAD DIST. NO. 1 ILLINOIS FED. AID PROJECT			CONTRACT NO. 61652	

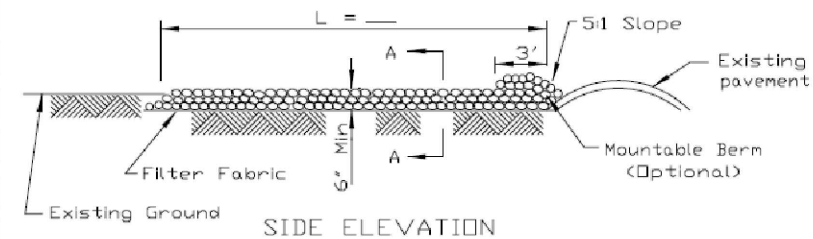
DATE	
DESIGNED	
CHECKED	
GRADES CHECKED	
BY	
STRUCTURE NOTATIONS CHKD	
NO.	

DATE	
DESIGNED	
CHECKED	
GRADES CHECKED	
BY	
STRUCTURE NOTATIONS CHKD	
NO.	

STABILIZED CONSTRUCTION ENTRANCE PLAN



PLAN VIEW



SIDE ELEVATION

NOTES:

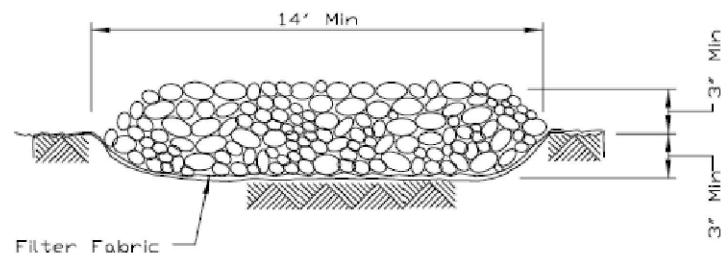
1. Filter fabric shall meet the requirements of material specification 592 GEOTEXTILE, Table I or 2, Class I, II or IV and shall be placed over the cleared area prior to the placing of rock.
2. Rock or reclaimed concrete shall meet one of the following IDOT coarse aggregate gradation, CA-1, CA-2, CA-3 or CA-4 and be placed according to construction specification 25 ROCKFILL using placement Method 1 and Class III compaction.
3. Any drainage facilities required because of washing shall be constructed according to manufacturers specifications.
4. If wash racks are used they shall be installed according to the manufacturer's specifications.

REFERENCE	Project	_____
	Designed	_____ Date _____
	Checked	_____ Date _____
	Approved	_____ Date _____

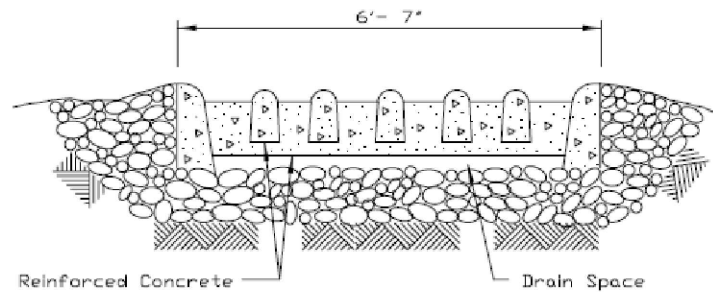


STANDARD DWG. NO.	IL-630
SHEET	1 OF 2
DATE	8-18-94

STABILIZED CONSTRUCTION ENTRANCE PLAN



SECTION A-A



SECTION B-B

REFERENCE	Project	_____
	Designed	_____ Date _____
	Checked	_____ Date _____
	Approved	_____ Date _____



STANDARD DWG. NO.	IL-630
SHEET	2 OF 2
DATE	8-18-94

1. Set posts and excavate or slit-trench a 6-inch deep trench upslope along the line of the post

6 in.

5 (five) foot max. spacing

Direction of flow

2. Attach the geotextile filter fabric to each post with a minimum of 3 (three) fasteners per post and extend to the bottom of the trench. Acceptable fasteners include staples, zip ties, or wire ties

3. Backfill and compact the excavated spoil materials

2 (two) inch nominal hardwood posts or U.T.L. or C shape, steel posts with a minimum weight of 1.33 lbs/ft

Post and fabric height above ground = 30 in.

Fasteners (typ.)

Geotextile fabric

Compacted spoil material

Fabric extension into the trench

Burial depth = 18 in.

Geotextile Requirement	Test Method	MARV
Grab strength	ASTM D 4632	
- Machine direction		550 N
- X-machine direction		450 N
Permittivity	ASTM D 4491	0.05 sec-1
Apparent opening size*	ASTM D 4751	0.60 mm
Ultraviolet stability (retained strength)	ASTM D 4365	70% after 500 hours

Note: Value for apparent opening size represents maximum average roll value.

SILT FENCE DETAIL

DATE: 4/21/08 BY: KAW

REVISED: _____ BY: _____



STORMWATER MANAGEMENT COMMISSION



STORMWATER MANAGEMENT COMMISSION

TYPICAL CONSTRUCTION SEQUENCING

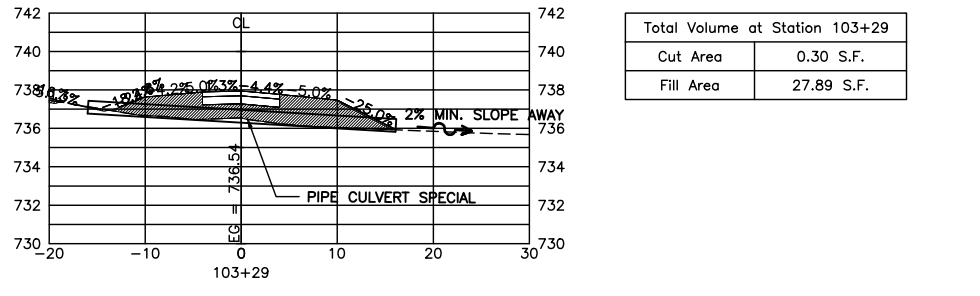
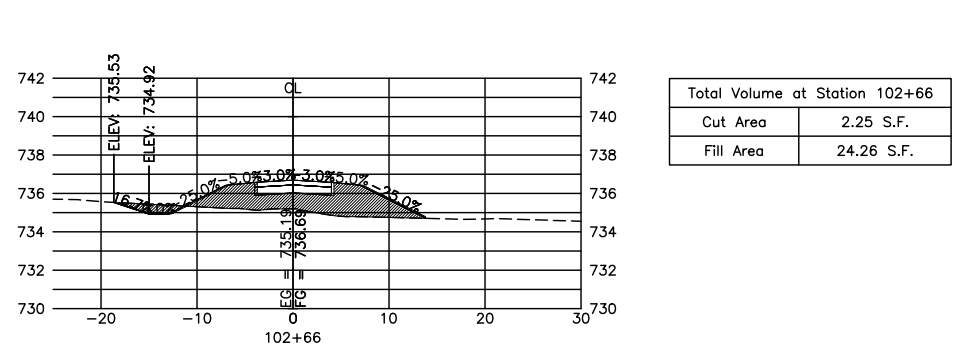
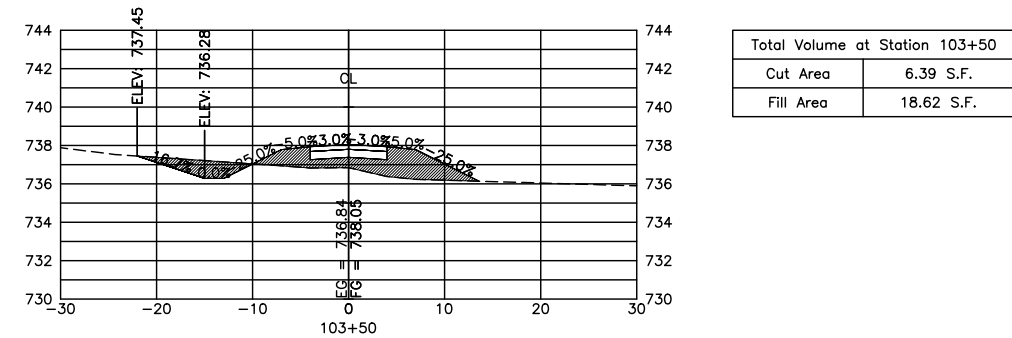
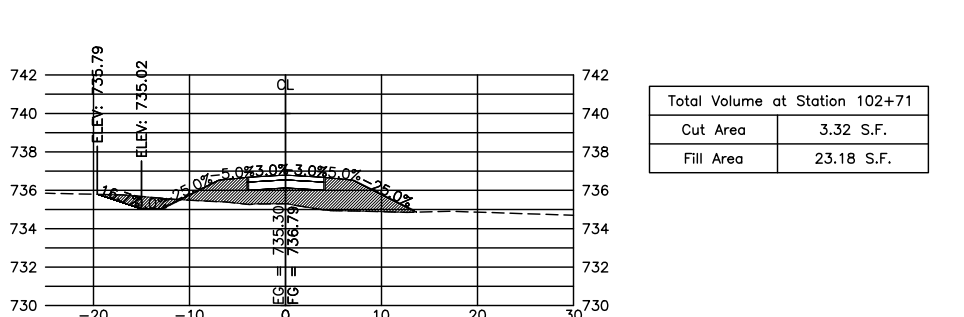
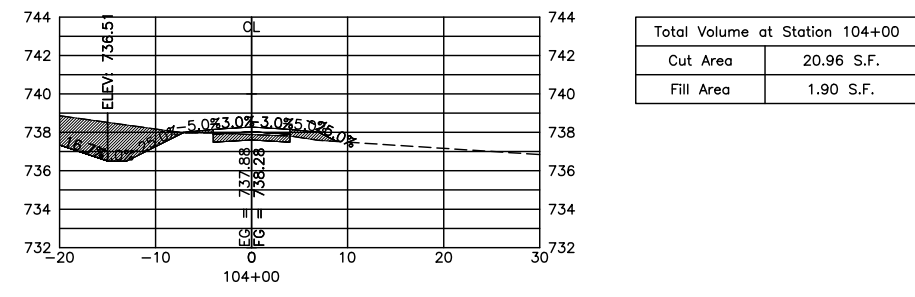
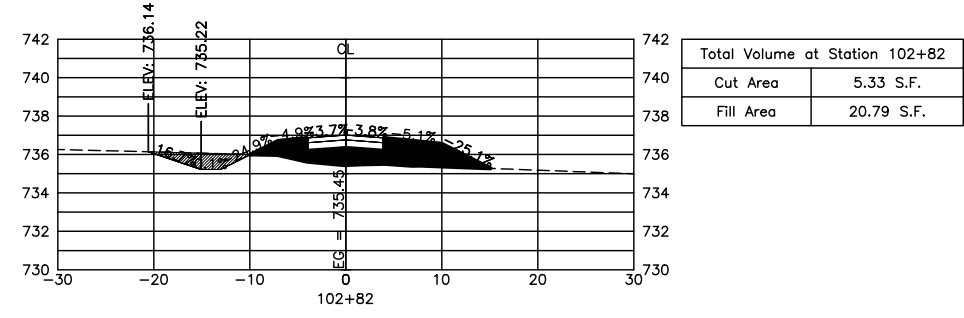
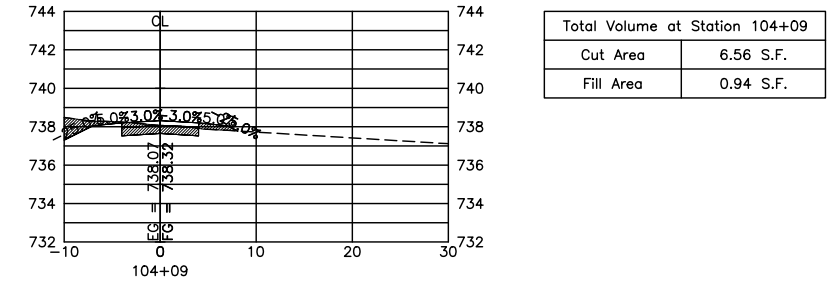
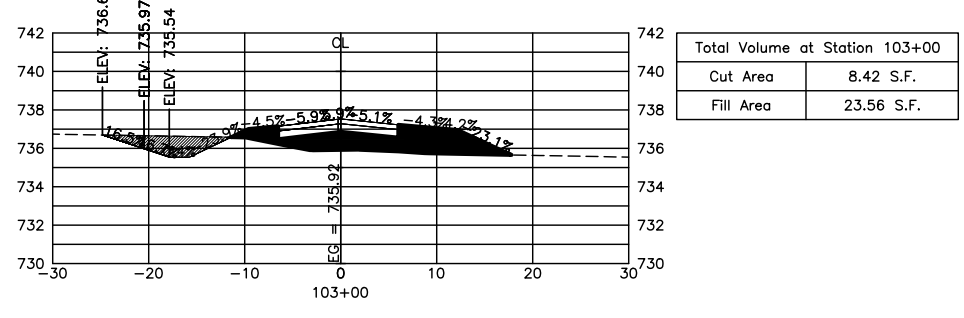
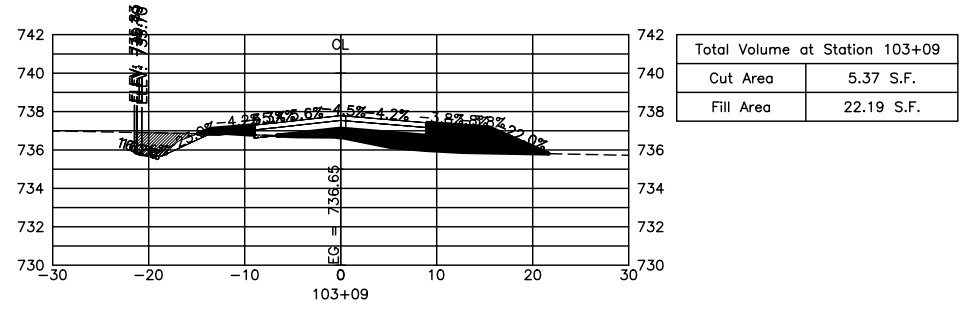
- 1.) Installation of soil erosion and sediment control SE/SC measures
 - a.) Selective vegetation removal for silt fence installation
 - b.) Silt fence installation
 - c.) Construction fencing around areas not to be disturbed
 - d.) Stabilized construction entrance
 - 2.) Tree removal where necessary (clear & grub)
 - 3.) Construct sediment trapping devices (sediment traps, basins...)
 - 4.) Construct detention facilities and outlet control structure with restrictor & temporary perforated riser
 - 5.) Strip topsoil, stockpile topsoil and grade site
 - 6.) Temporarily stabilize topsoil stockpiles (seed and silt fence around toe of slope)
 - 7.) Install storm sewer, sanitary sewer, water and associated inlet & outlet protection
 - 8.) Permanently stabilize detention basins with seed and erosion control blanket
 - 9.) Temporarily stabilize all areas including lots that have reached temporary grade
 - 10.) Install roadways
 - 11.) Permanently stabilize all outlot areas
 - 12.) Install structures and grade individual lots
 - 13.) Permanently stabilize lots
 - 14.) Remove all temporary SE/SC measures after the site is stabilized with vegetation
- * Soil erosion and sediment control maintenance must occur every two weeks and after every 1/2 or greater rainfall event

T:\Bicycle Advisory Commission\CMQ\FY-2008\

FILE NAME = Buffalo_Creek_Design2019.dwg	USER NAME = chomuth	DESIGNED - BS	REVISED -	BUFFALO CREEK MULTI-USE TRAIL EXTENSION LAKE COUNTY STORMWATER MANAGEMENT COMMISSION DETAILS	F.A.U. RTE.	SECTION	COUNTY	TOTAL SHEETS	SHEET NO.
	LAYOUT NAME = Erosion Details	DRAWN - CH	REVISED -			19-00212-00-BT	COOK	29	26
	PLOT SCALE = 20.00' / IN.	CHECKED - MP	REVISED -						CONTRACT NO. 61G52
	PLOT DATE = Apr 22, 2020-1:01pm	DATE - 09/12/2019	REVISED -		SCALE: VERT. N.T.S.	SHEET NO. 26 OF 29 SHEETS			ILLINOIS FED. AID PROJECT

DATE	
BY	
REVISIONS	
GRADES CHECKED	
B.M. NOTED	
STRUCTURE NOTATIONS CHKD	
PLAN	
NOTE BOOK NO.	

DATE	
BY	
REVISIONS	
GRADES CHECKED	
B.M. NOTED	
STRUCTURE NOTATIONS CHKD	
PROFILE	
NOTE BOOK NO.	



FILE NAME = Buffalo_Creek_Design2019.dwg

USER NAME = chomuth
 LAYOUT NAME = Cross-Sections 2
 PLOT SCALE = 20.00' / IN.
 PLOT DATE = Apr 22, 2020-1:02pm

DESIGNED - BS
 DRAWN - CH
 CHECKED - MP
 DATE - 09/12/2019

REVISED -
 REVISED -
 REVISED -
 REVISED -

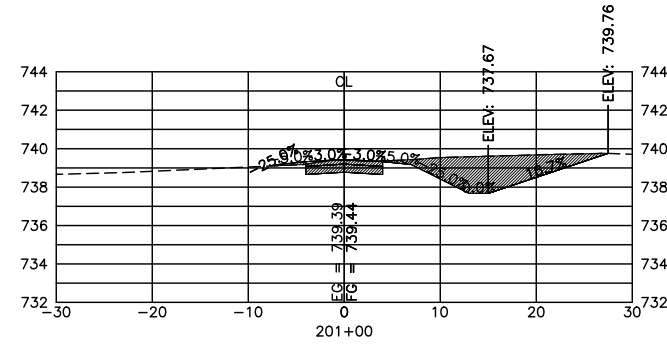
STATE OF ILLINOIS
 DEPARTMENT OF TRANSPORTATION

BUFFALO CREEK MULTI-USE TRAIL EXTENSION
 LAKE COUNTY FOREST PRESERVE CROSS SECTION SHEET
 HORIZ. 1"=10'
 SCALE: VERT. 1"=5' SHEET NO. 28 OF 29 SHEETS

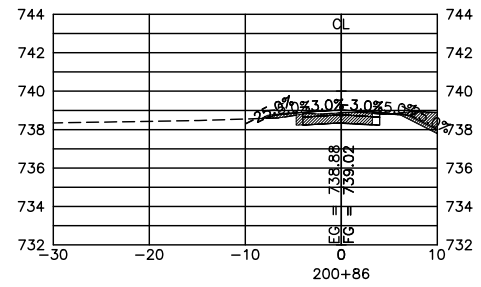
F.A.U. RTE.	SECTION	COUNTY	TOTAL SHEETS	SHEET NO.
	19-00212-00-BT	COOK	29	28
CONTRACT NO. 61G52				
ILLINOIS FED. AID PROJECT				

DATE	
BY	
REVISIONS	
GRADES CHECKED	
B.M. NOTED	
STRUCTURE NOTATIONS CH'D	
PLAN	
NOTE BOOK NO.	

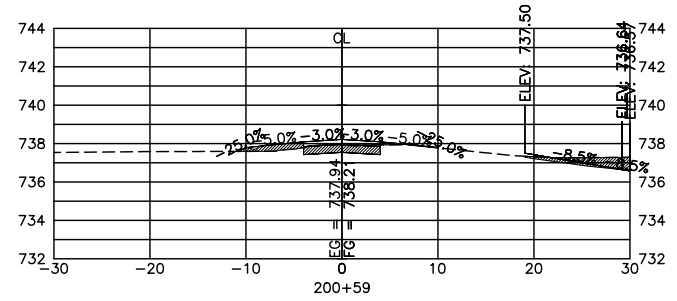
DATE	
BY	
REVISIONS	
GRADES CHECKED	
B.M. NOTED	
STRUCTURE NOTATIONS CH'D	
PROFILE	
NOTE BOOK NO.	



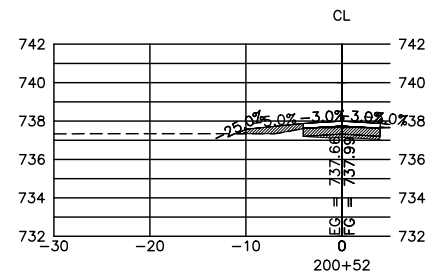
Total Volume at Station 201+00	
Cut Area	28.11 S.F.
Fill Area	0.31 S.F.



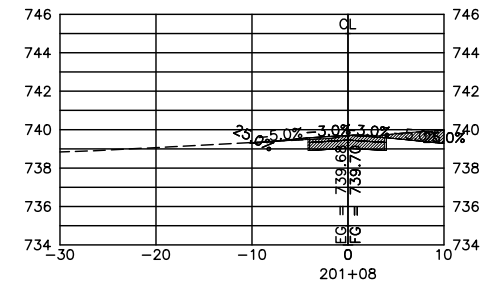
Total Volume at Station 200+86	
Cut Area	7.00 S.F.
Fill Area	0.67 S.F.



Total Volume at Station 200+59	
Cut Area	7.40 S.F.
Fill Area	2.02 S.F.



Total Volume at Station 200+52	
Cut Area	4.21 S.F.
Fill Area	1.95 S.F.



Total Volume at Station 201+08	
Cut Area	7.96 S.F.
Fill Area	0.20 S.F.

FILE NAME = Buffalo_Creek_Design2019.dwg

USER NAME = chomuth	DESIGNED - BS	REVISED -
LAYOUT NAME = Cross-Sections 3	DRAWN - CH	REVISED -
PLOT SCALE = 20.00' / IN.	CHECKED - MP	REVISED -
PLOT DATE = Apr 22, 2020-1:02pm	DATE - 09/12/2019	REVISED -

**STATE OF ILLINOIS
DEPARTMENT OF TRANSPORTATION**

**BUFFALO CREEK MULTI-USE TRAIL EXTENSION
LAKE COUNTY FOREST PRESERVE CROSS SECTION SHEET**
HORIZ. 1"=10'
SCALE: VERT. 1"=5' SHEET NO. 29 OF 29 SHEETS

F.A.U. RTE.	SECTION	COUNTY	TOTAL SHEETS	SHEET NO.
	19-00212-00-BT	COOK	29	29
CONTRACT NO. 61G52			ILLINOIS FED. AID PROJECT	