

F.A.U. RTE.	SECTION	COUNTY	TOTAL SHEETS	SHEET NO.
4056	19-00070-00-SW	McHENRY	18	1
LIPR(748)		ILLINOIS	CONTRACT NO. 61G63	

FOR INDEX OF SHEETS, SEE SHEET NO. 2

FOR INDEX OF HIGHWAY STANDARDS, SEE SHEET NO. 2

PLANS FOR PROPOSED FEDERAL AID HIGHWAY

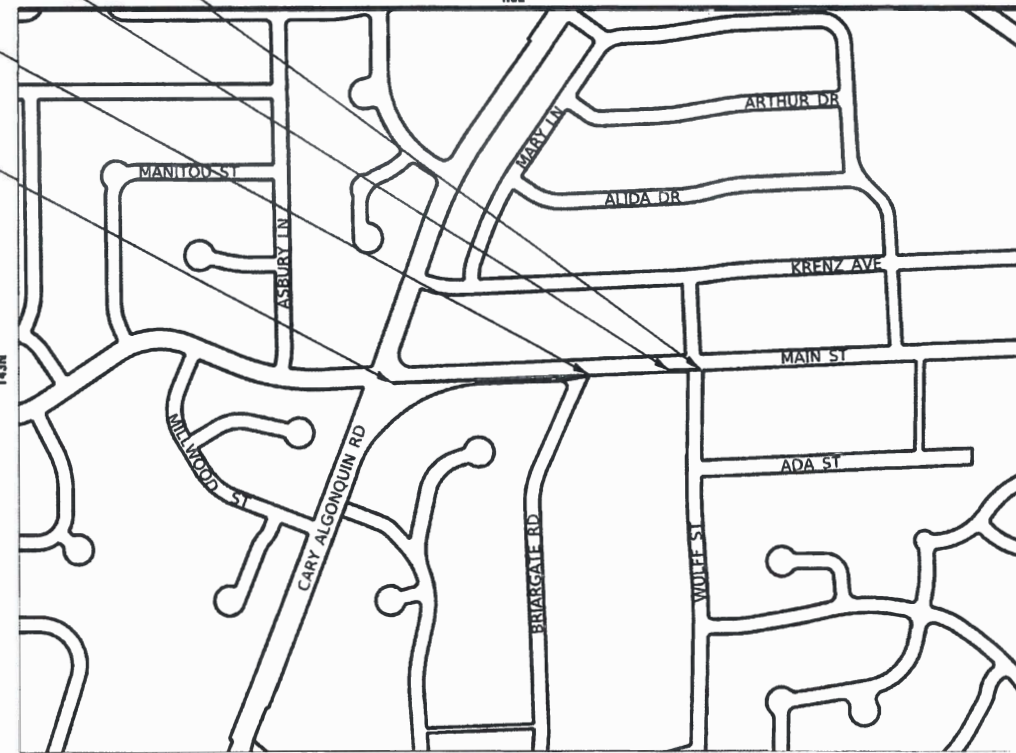
FAU 4056 (W MAIN STREET)
 FROM FAU 4052 (CARY-ALGONQUIN ROAD)
 TO MUN 2110 (WULFF STREET)
 SECTION: 19-00070-00-SW
 PROJECT: LIPR(748)
 SIDEWALK INSTALLATION
 VILLAGE OF CARY, ILLINOIS
 McHENRY COUNTY
 C-91-189-20

IMPROVEMENTS END
 STA 63+17

END OMISSION
 STA 61+98

BEGIN OMISSION
 STA 58+46

IMPROVEMENTS BEGIN
 STA 50+30



GROSS LENGTH = 1,287 FT. = 0.244 MILE
 NET LENGTH = 935 FT. = 0.177 MILE

BAXTER & WOODMAN
 Consulting Engineers



LOCATION OF SECTION INDICATED THIS: -

62-68953
 LICENSED PROFESSIONAL ENGINEER
 STATE OF ILLINOIS
 JONATHAN D. MILLER
 2/28/20

PROJECT MANAGER
 LICENSE EXPIRES 11-30-2020

STATE OF ILLINOIS
 DEPARTMENT OF TRANSPORTATION
 APPROVED *Erich D. Horn*
 2-28-20
 VILLAGE OF CARY, ILLINOIS

PASSED *C. F. ...*
 3-11-2020
 DISTRICT I ENGINEER OF LOCAL ROADS AND STREETS

RELEASING FOR BID
 BASED ON LIMITED REVIEW
 March 13, 2020
Jonathan D. Miller
 REGIONAL ENGINEER

PRINTED BY THE AUTHORITY
 OF THE STATE OF ILLINOIS

B&W PROJECT NO.: 181149 DATE: 3-2-20

64210m BUREAU OF LOCAL ROADS AND STREETS: FEDERAL AID PROGRAM ENGINEER CARMEN E. RAMOS SCHAUMBURG, IL
 2/28/2020 06:56:00 AM C:\AD\PROJ\181149\181149-00-SW\181149-00-SW-01\181149-00-SW-01-01.dwg
 62-68953 LICENSED PROFESSIONAL ENGINEER STATE OF ILLINOIS JONATHAN D. MILLER 2/28/20

FULL SIZE PLANS HAVE BEEN PREPARED USING STANDARD ENGINEERING SCALES. REDUCED SIZED PLANS WILL NOT CONFORM TO STANDARD SCALES. IN MAKING MEASUREMENTS ON REDUCED PLANS, THE ABOVE SCALES MAY BE USED.

J.U.L.I.E. DESIGN STAGE REQUEST
 DIG. No. X3520987



CONTACT JULIE AT 811 OR 800-892-0123 WITH THE FOLLOWING:

COUNTY McHENRY
 CITY-TOWNSHIP: CARY - ALGONQUIN
 SEC. & 1/4 SEC. NO. = NW 1/4 S13 T43N R8E
 48 HOURS (2 working days) BEFORE YOU DIG

CONTRACT NO. 61G63

GENERAL NOTES

- ALL CONSTRUCTION SHALL BE DONE IN ACCORDANCE WITH THE DETAILS IN THE PLANS, THE SPECIAL PROVISIONS INCLUDED IN THE CONTRACT DOCUMENTS, AND THE FOLLOWING STATE OF ILLINOIS SPECIFICATIONS: "THE STANDARD SPECIFICATIONS FOR ROAD AND BRIDGE CONSTRUCTION APRIL 2016" (REFERRED TO AS THE "STANDARD SPECIFICATIONS"), THE "SUPPLEMENTAL SPECIFICATIONS AND RECURRING SPECIAL PROVISIONS JANUARY 2020", THE "MANUAL ON UNIFORM TRAFFIC CONTROL DEVICES FOR STREETS AND HIGHWAYS", THE "MANUAL OF TEST PROCEDURES FOR MATERIALS" AND THE "STANDARD SPECIFICATIONS FOR WATER AND SEWER MAIN CONSTRUCTION IN ILLINOIS".
- THE LOCATIONS OF PUBLIC UTILITIES SHOWN ON THE PLANS REPRESENTS ONLY THE OPINION OF THE ENGINEER AND IS ONLY INCLUDED FOR THE CONVENIENCE OF THE BIDDER AND THE ACCURACY IS NOT GUARANTEED. THE CONTRACTOR SHALL BE RESPONSIBLE FOR THE PROTECTION OF ALL UNDERGROUND OR SURFACE UTILITIES, INCLUDING SPRINKLER SYSTEMS, EVEN THOUGH THEY MAY NOT BE SHOWN ON THE PLANS.
- THE CONTRACTOR SHALL NOTIFY THE VILLAGE ENGINEER AT 847-639-0003 AT LEAST 48 HOURS IN ADVANCE OF BEGINNING WORK TO OBTAIN VILLAGE UTILITY LOCATIONS.
- THE CONTRACTOR MAY OBTAIN MUNICIPAL WATER IN BULK, AT NO CHARGE, AS LONG AS THERE IS NOT A "WATERING BAN" IN EFFECT. THE INDISCRIMINATE USE OF FIRE HYDRANTS IS STRICTLY PROHIBITED. WATER FOR CONSTRUCTION SHALL BE METERED OR OTHERWISE ACCOUNTED FOR AND A DAILY LOG MAINTAINED. THE CONTRACTOR SHALL PROVIDE THE WATER TRUCK AND DRIVER REQUIRED TO OBTAIN AND TRANSPORT THIS WATER. THE VILLAGE RESERVES THE RIGHT TO RESTRICT OR REFUSE THE USE OF VILLAGE WATER IF DEEMED NECESSARY.
- ACCESS TO PRIVATE DRIVEWAYS SHALL BE PROVIDED AT ALL TIMES EXCEPT DURING ACTUAL CONSTRUCTION ADJACENT THERE TO.
- DURING CONSTRUCTION, THE CONTRACTOR WILL BE PERMITTED TO LIMIT ON-STREET PARKING IN ORDER TO COMPLETE CONSTRUCTION OPERATIONS. THE CONTRACTOR WILL BE REQUIRED TO COORDINATE WITH THE MUNICIPALITY A MINIMUM OF 48 HOURS IN ADVANCE. IT WILL BE THE RESPONSIBILITY OF THE CONTRACTOR TO PLACE ADVANCE SIGNS TO ALERT RESIDENTS AND COMMUTERS OF THE CONSTRUCTION WORK. THE PLACEMENT OF THESE SIGNS SHALL TAKE PLACE 48 HOURS IN ADVANCE IN ORDER TO ALLOW SUFFICIENT TIME FOR RESIDENTS AND GENERAL PUBLIC TO REVISE THEIR PARKING PATTERNS.
- GEOTECHNICAL FABRIC FOR GROUND STABILIZATION AND/OR AGGREGATE SUBGRADE IMPROVEMENT (CU YD) HAVE BEEN PROVIDED FOR USE AT THE LOCATIONS INDICATED FOR SOILS THAT TEND TO BE UNSTABLE AND/OR UNSUITABLE. THE ACTUAL NEED FOR REMOVAL AND REPLACEMENT WITH ABOVE ITEM WILL BE DETERMINED IN THE FIELD AT THE TIME OF CONSTRUCTION BY THE GEOTECHNICAL ENGINEER. ALL POTENTIALLY UNSTABLE SOILS SHOULD BE TESTED WITH A STATIC OR DYNAMIC CONE PENETROMETER AND TREATED IN ACCORDANCE WITH ARTICLE 301.04 OF THE SSRBC AND IDOT SUBGRADE STABILITY MANUAL. IF UNSTABLE AND/OR UNSUITABLE SOILS ARE NOT ENCOUNTERED, THEN THE QUANTITY SHALL BE DEDUCTED AND NO ADDITIONAL COMPENSATION WILL BE DUE TO THE CONTRACTOR.
- ANY AGGREGATE SUBGRADE IMPROVEMENT CONTAMINATED AND/OR DAMAGED BY THE CONTRACTOR'S VEHICLES AND/OR EQUIPMENTS IS TO BE REMOVED AND REPLACED AS DIRECTED BY THE ENGINEER AT CONTRACTOR EXPENSE.

HIGHWAY STANDARDS

000001-07	STANDARD SYMBOLS, ABBREVIATIONS AND PATTERNS
424001-11	PERPENDICULAR CURB RAMPS FOR SIDEWALKS
424031-02	MEDIAN PEDESTRIAN CROSSINGS
606001-07	CONCRETE CURB TYPE B AND COMBINATION CONCRETE CURB AND GUTTER
606301-04	PC CONCRETE ISLANDS AND MEDIANS
701006-05	OFF-RD OPERATIONS, 2L, 2W, 15' (4.5 m) TO 24" (600 mm) FROM PAVEMENT EDGE
701301-04	LANE CLOSURE, 2L, 2W, SHORT TIME OPERATIONS
701501-06	URBAN LANE CLOSURE, 2L, 2W, UNDIVIDED
701502-09	URBAN LANE CLOSURE, 2L, 2W, WITH BIDIRECTIONAL LEFT TURN LANE
701801-06	SIDEWALK, CORNER OR CROSSWALK CLOSURE
701901-08	TRAFFIC CONTROL DEVICES
720001-01	SIGN PANEL MOUNTING DETAILS
720006-04	SIGN PANEL ERECTION DETAILS
878001-10	CONCRETE FOUNDATION DETAILS

INDEX OF SHEETS

1	COVER
2	GENERAL NOTES, HIGHWAY STANDARDS, BENCHMARKS, AND INDEX OF SHEETS
3	SUMMARY OF QUANTITIES
4	TYPICAL SECTIONS AND HOT-MIX ASPHALT MIXTURE REQUIREMENTS
5 - 6	PLAN AND PROFILE
7	PLAN
8	EROSION CONTROL PLAN
9 - 11	ADA DETAILS
12	MISCELLANEOUS DETAILS
13	CURB OR CURB AND GUTTER REMOVAL AND REPLACEMENT
14	DISTRICT ONE TYPICAL PAVEMENT MARKINGS
15 - 18	CROSS SECTIONS

BENCHMARKS

- (NAVD88)
- BM #1 NORTHEAST ARROW BOLT ON FIRE HYDRANT
ON NORTH SIDE OF MAIN STREET AT ADDRESS 664
ELEV = 867.414
- BM #2 NORTHEAST ARROW BOLT ON FIRE HYDRANT
ON NORTH SIDE OF MAIN STREET AT ADDRESS 628
ELEV = 847.732

STATE OF ILLINOIS - PROFESSIONAL DESIGN FIRM \sht\149-Site Route to School\CAD\Sheets-Ph 1181149-SHT-GenNotes.dgn
 LICENSE NO. - 194-00121 - EXPIRES 4/30/21
 642jdm 3/27/2020 8:28:02 AM
 MODEL D:\sht\149-Site Route to School\CAD\Sheets-Ph 1181149-SHT-GenNotes.dgn
 FILE NAME: I:\C\y\149-Site Route to School\CAD\Sheets-Ph 1181149-SHT-GenNotes.dgn

	USER NAME = 642jdm	DESIGNED - JBW	REVISED -
		DRAWN - KAR	REVISED -
	PLOT SCALE = 20.0000 ' / in.	CHECKED - JJF	REVISED -
	PLOT DATE = 3/27/2020	DATE - 3-27-20	FILE - 181149-SHT-GenNotes.dgn

STATE OF ILLINOIS
DEPARTMENT OF TRANSPORTATION

GENERAL NOTES, HIGHWAY STANDARDS, BENCHMARKS, AND INDEX OF SHEETS			
SCALE: N.T.S.	SHEET 1	OF 1	SHEETS
STA.	TO STA.		

F.A.U. RTE.	SECTION	COUNTY	TOTAL SHEETS	SHEET NO.
4056	19-00070-00-SW	McHENRY	18	2
CONTRACT NO. 61G63				
ILLINOIS		FED. AID PROJECT LIPR(748)		

SUMMARY OF QUANTITIES

CODE NO.	ITEM	UNIT	TOTAL QUANTITY	CONSTRUCTION CODE	
				SRTS 100%	
				SIDEWALK	URBAN
20101000	TEMPORARY FENCE	FOOT	500	500	
* 20101200	TREE ROOT PRUNING	EACH	8	8	
* 20101350	TREE PRUNING (OVER 10 INCH DIAMETER)	EACH	8	8	
20200100	EARTH EXCAVATION	CU YD	167	167	
20201200	REMOVAL AND DISPOSAL OF UNSUITABLE MATERIAL	CU YD	214	214	
21001000	GEOTECHNICAL FABRIC FOR GROUND STABILIZATION	SQ YD	1,413	1,413	
21101615	TOPSOIL FURNISH AND PLACE, 4"	SQ YD	930	930	
25000110	SEEDING, CLASS 1A	ACRE	0.3	0.3	
25000400	NITROGEN FERTILIZER NUTRIENT	POUND	27	27	
25000500	PHOSPHORUS FERTILIZER NUTRIENT	POUND	27	27	
25000600	POTASSIUM FERTILIZER NUTRIENT	POUND	27	27	
25100630	EROSION CONTROL BLANKET	SQ YD	930	930	
28000250	TEMPORARY EROSION CONTROL SEEDING	POUND	30	30	
28000400	PERIMETER EROSION BARRIER	FOOT	150	150	
28000510	INLET FILTERS	EACH	7	7	

* INDICATES SPECIALTY ITEM
INDICATES SPECIAL PROVISION

CODE NO.	ITEM	UNIT	TOTAL QUANTITY	CONSTRUCTION CODE	
				SRTS 100%	
				SIDEWALK	URBAN
# 30300001	AGGREGATE SUBGRADE IMPROVEMENT	CU YD	98	98	
35101600	AGGREGATE BASE COURSE, TYPE B 4"	SQ YD	683	683	
40800050	INCIDENTAL HOT-MIX ASPHALT SURFACING	TON	4	4	
42001300	PROTECTIVE COAT	SQ YD	760	760	
42400200	PORTLAND CEMENT CONCRETE SIDEWALK 5 INCH	SQ FT	5,840	5,840	
42400800	DETECTABLE WARNINGS	SQ FT	136	136	
44000100	PAVEMENT REMOVAL	SQ YD	40	40	
44000600	SIDEWALK REMOVAL	SQ FT	425	425	
60600605	CONCRETE CURB, TYPE B	FOOT	310	310	
60603800	COMBINATION CONCRETE CURB AND GUTTER, TYPE B-6.12	FOOT	95	95	
60618300	CONCRETE MEDIAN SURFACE, 4 INCH	SQ FT	150	150	
67100100	MOBILIZATION	L SUM	1.00	1.00	
70102620	TRAFFIC CONTROL AND PROTECTION, STANDARD 701501	L SUM	1.00	1.00	
70102622	TRAFFIC CONTROL AND PROTECTION, STANDARD 701502	L SUM	1.00	1.00	
70102640	TRAFFIC CONTROL AND PROTECTION, STANDARD 701801	L SUM	1.00	1.00	

* INDICATES SPECIALTY ITEM
INDICATES SPECIAL PROVISION

CODE NO.	ITEM	UNIT	TOTAL QUANTITY	CONSTRUCTION CODE	
				SRTS 100%	
				SIDEWALK	URBAN
* 72000100	SIGN PANEL - TYPE 1	SQ FT	46	46	
* 72400500	RELOCATE SIGN PANEL ASSEMBLY - TYPE A	EACH	2	2	
* 72800100	TELESCOPING STEEL SIGN SUPPORT	FOOT	60	60	
* 78000600	THERMOPLASTIC PAVEMENT MARKING - LINE 12"	FOOT	184	184	
* 78000650	THERMOPLASTIC PAVEMENT MARKING - LINE 24"	FOOT	24	24	
* # 89501510	RELOCATE EXISTING FLASHING BEACON	EACH	2	2	
# Z0004562	COMBINATION CONCRETE CURB AND GUTTER REMOVAL AND REPLACEMENT	FOOT	165	165	
Z0013798	CONSTRUCTION LAYOUT	L SUM	1.00	1.00	
# Z0017400	DRAINAGE & UTILITY STRUCTURES TO BE ADJUSTED	EACH	3	3	
* # Z0033058	POST MOUNTED FLASHING BEACON INSTALLATION (SPECIAL)	EACH	2	2	
X0327980	PAVEMENT MARKING REMOVAL - WATER BLASTING	SQ FT	128	128	

* INDICATES SPECIALTY ITEM
INDICATES SPECIAL PROVISION

STATE OF ILLINOIS - PROFESSIONAL DESIGN FIRM 181149-SHT-SOQ.dgn
 LICENSE NO. 194-000121 - EXPIRES 4/30/20
 642jdm
 MODEL - Debut
 FILE NAME - I:\Crystal Lake\181149-SHT-SOQ.dgn

BAXTER & WOODMAN Civil & Survey Engineers	USER NAME = 642jdm	DESIGNED - JBEW	REVISED -
	PLOT SCALE = 20.0000' / in.	DRAWN - KAR	REVISED -
	PLOT DATE = 3/27/2020	CHECKED - JJF	REVISED -
		DATE - 3-27-20	FILE - 181149-SHT-SOQ.dgn

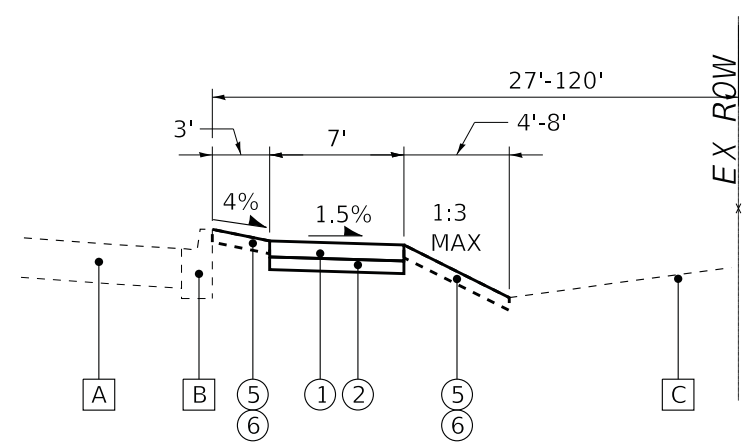
**STATE OF ILLINOIS
DEPARTMENT OF TRANSPORTATION**

SUMMARY OF QUANTITIES

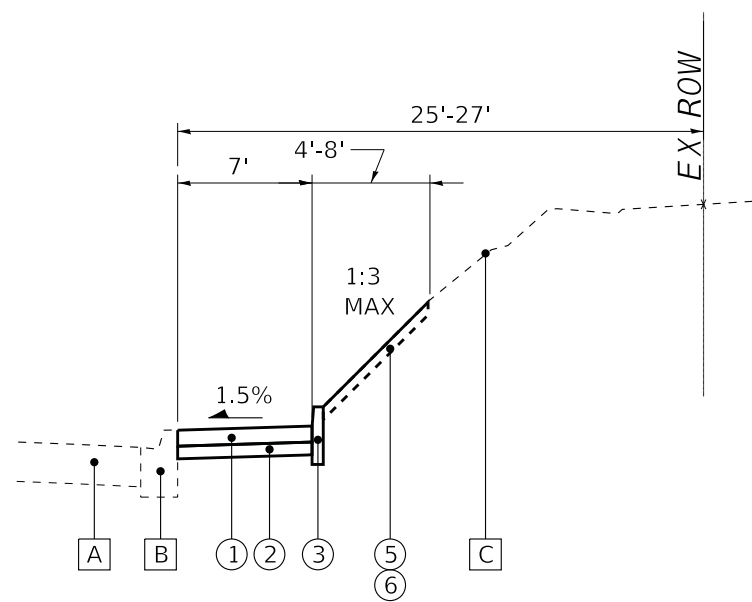
SCALE: N.T.S. SHEET 1 OF 1 SHEETS STA. TO STA.

F.A.U. RTE.	SECTION	COUNTY	TOTAL SHEETS	SHEET NO.
4056	19-00070-00-SW	McHENRY	18	3
			CONTRACT NO. 61G63	
ILLINOIS FED. AID PROJECT IUPR(748)				

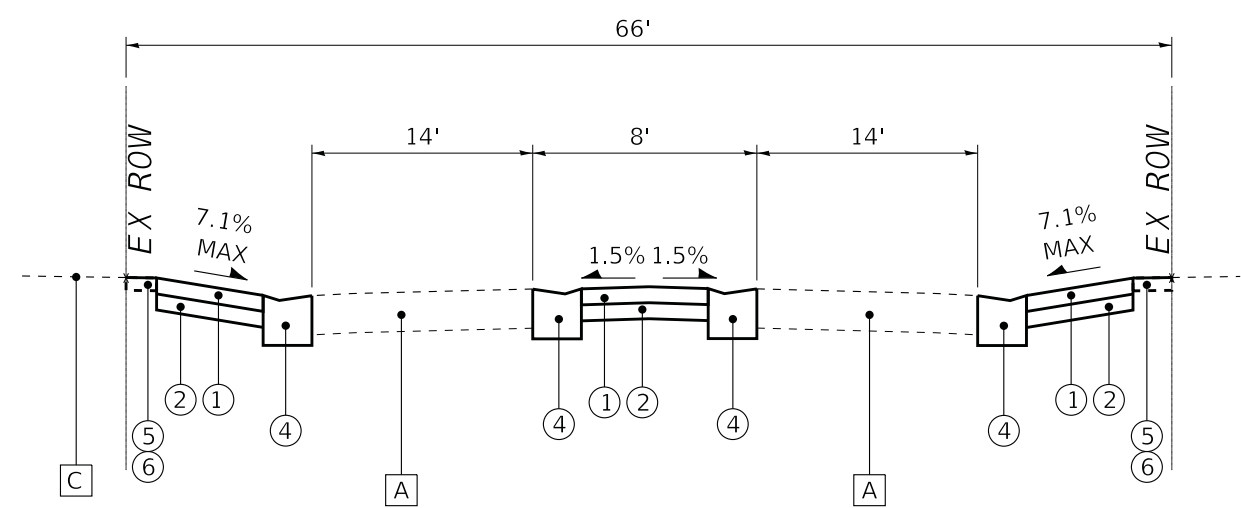
STATE OF ILLINOIS - PROFESSIONAL DESIGN FIRM
 LICENSE NO. 194-001212 EXPIRES 4/30/2021
 3/27/2020 8:28:29 AM
 MODEL Default
 FILE NAME: I:\Cyril\LakeCarry\181149-Site Route to School\CAD\Sheets-PH\181149-SHT-TypSec.dgn



TYPICAL SECTION
 W MAIN STREET
 STA 50+30 TO STA 54+40



TYPICAL SECTION
 W MAIN STREET
 STA 54+40 TO STA 57+73



TYPICAL SECTION
 W MAIN STREET
 AT WULFF ROAD

LEGEND

- A EXISTING PAVEMENT
- B EXISTING CURB AND GUTTER
- C EXISTING GROUND
- 1 PORTLAND CEMENT CONCRETE SIDEWALK - 5"
- 2 AGGREGATE BASE COURSE, TYPE B - 4"
- 3 CONCRETE CURB, TYPE B - 6"
- 4 COMBINATION CONCRETE CURB AND GUTTER TYPE B-6.12
- 5 SEEDING, CLASS 1A
- 6 TOPSOIL FURNISH AND PLACE, 4"

HOT-MIX ASPHALT MIXTURE REQUIREMENTS

MIXTURE TYPE	AIR VOIDS @ Ndes
INCIDENTAL HOT-MIX ASPHALT SURFACING	
HOT-MIX ASPHALT SURFACE COURSE, MIX "D", N50; 2" (IL-9.5mm)	4% @ 50 Gyr.

NOTES:
 1. THE UNIT WEIGHT USED TO CALCULATE ALL HMA SURFACE MIXTURE QUANTITIES IS 112 LBS/SQ YD/IN.
 2. THE "AC TYPE" FOR POLYMERIZED HMA MIXES SHALL BE "SBS/SBR PG 76 -22" AND FOR NON-POLYMERIZED HMA THE "AC TYPE" SHALL BE "PG 64 -22" UNLESS MODIFIED BY DISTRICT ONE SPECIAL PROVISIONS.
 3. FOR USE OF RECYCLED MATERIALS SEE SPECIAL PROVISIONS.



USER NAME = 642jdm	DESIGNED - JBEW	REVISED -
PLOT SCALE = 20.0000' / in.	CHECKED - JJF	REVISED -
PLOT DATE = 3/27/2020	DATE - 3-27-20	FILE - 181149-SHT-TypSec.dgn

**STATE OF ILLINOIS
 DEPARTMENT OF TRANSPORTATION**

**TYPICAL SECTIONS AND
 HOT-MIX ASPHALT MIXTURE REQUIREMENTS**

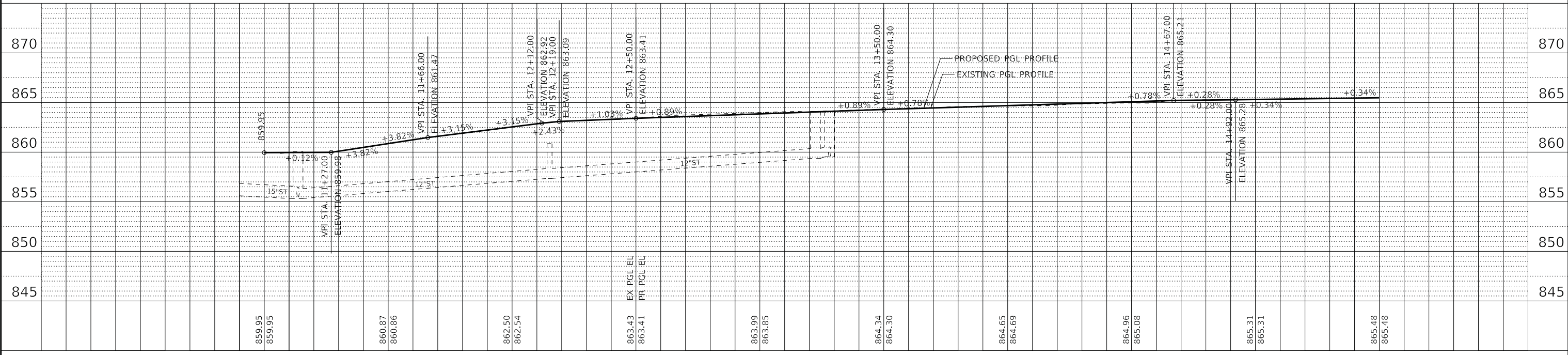
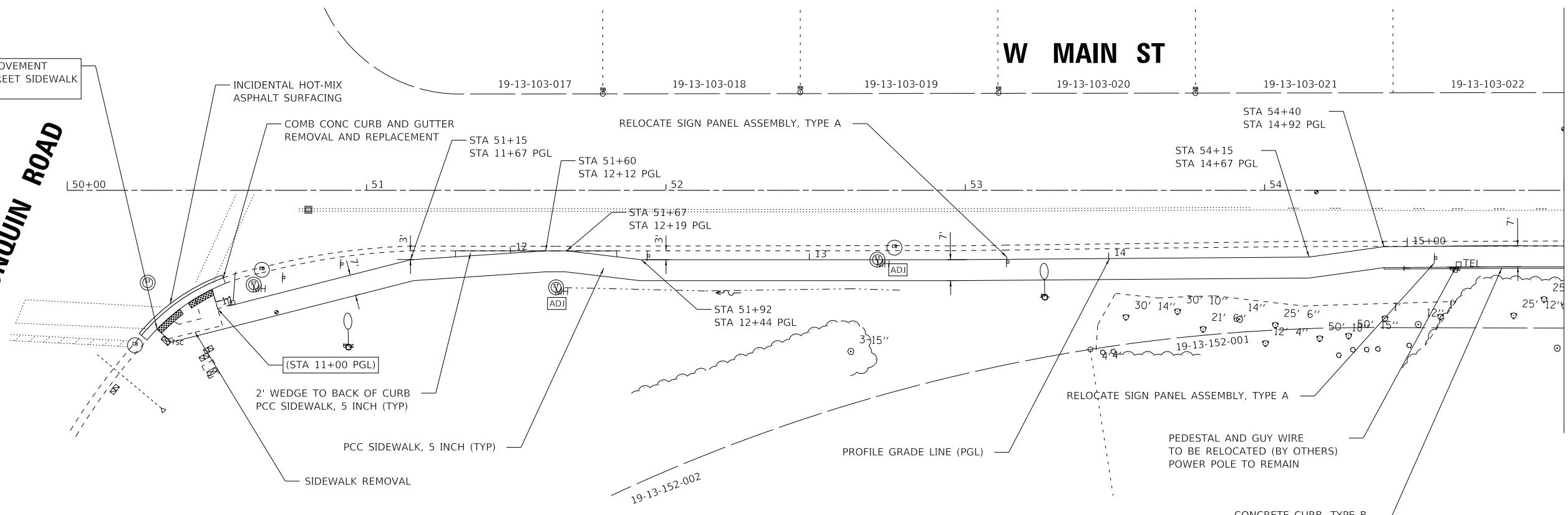
F.A.U. RTE. 4056	SECTION 19-00070-00-SW	COUNTY MCHENRY	TOTAL SHEETS 18	SHEET NO. 4
SCALE: N.T.S.			CONTRACT NO. 61G63	
SHEET 1 OF 1 SHEETS		ILLINOIS FED. AID PROJECT LIPR(748)		

BEGIN IMPROVEMENT
W MAIN STREET SIDEWALK
STA 50+30

CARY-ALGONQUIN ROAD

W MAIN ST

MATCH LINE STA 55+00



STATE OF ILLINOIS - PROFESSIONAL DESIGN FIRM
 LICENSE NO. - 18400121 - EXPIRES 4/30/2021
 MODEL: Default
 FILE NAME: I:\Crystal Lake\CARV1181149-Sale Route to School\CAD\Sheets-PP1-WMain.dgn
 I:\Crystal Lake\CARV1181149-Sale Route to School\CAD\Sheets-PP1-WMain.dgn
 I:\Crystal Lake\CARV1181149-Sale Route to School\CAD\Sheets-PP1-WMain.dgn



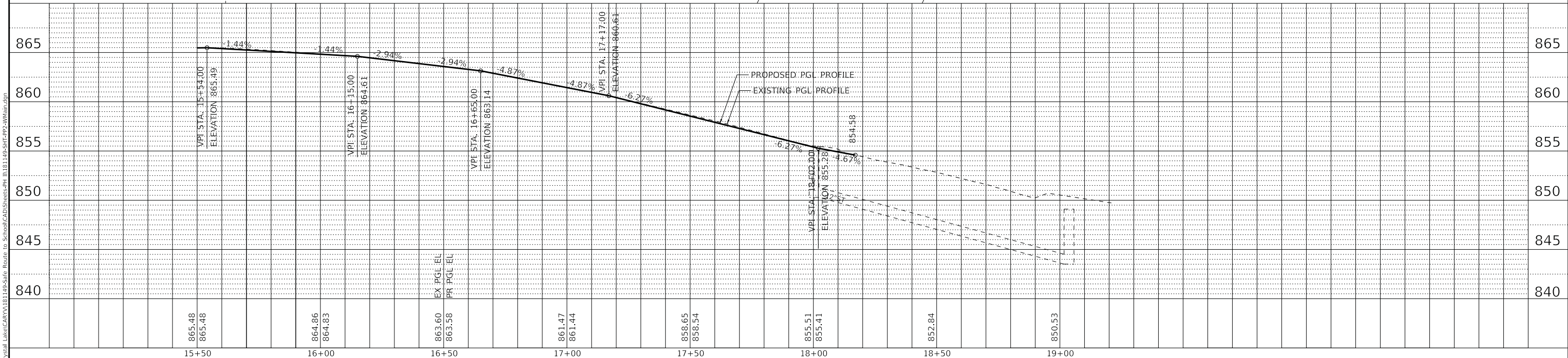
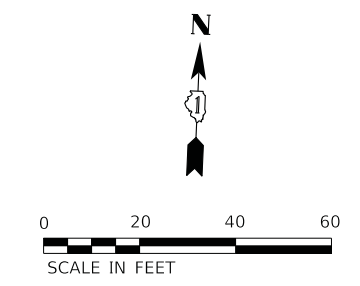
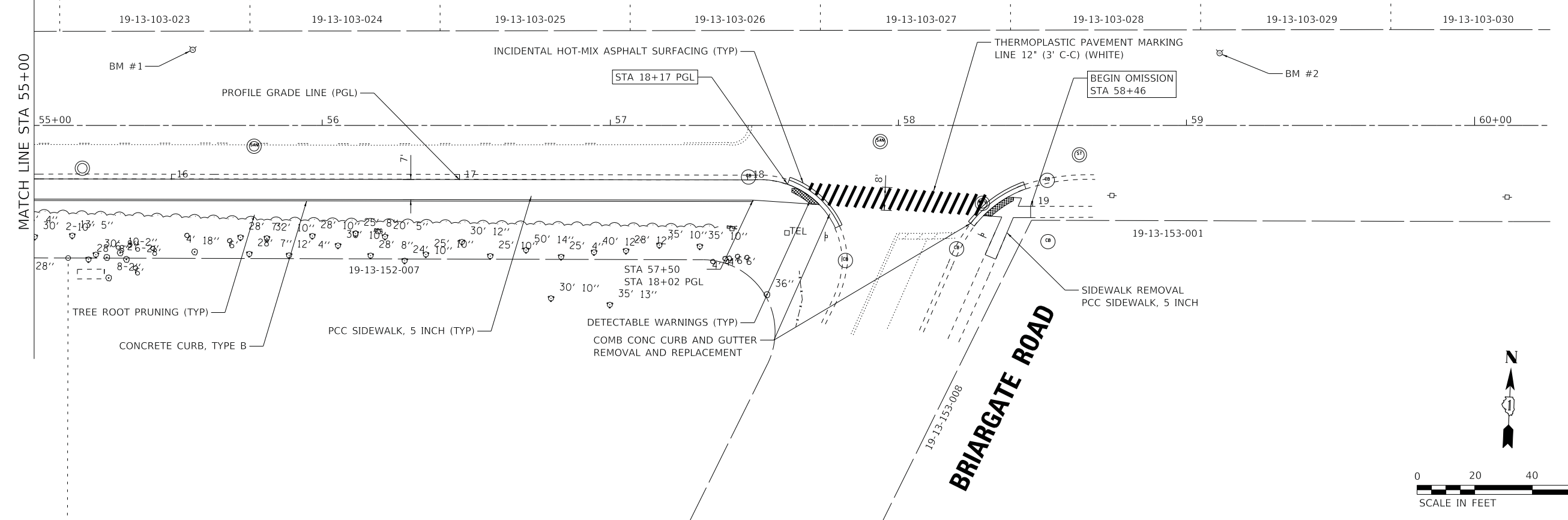
USER NAME = 642jdm	DESIGNED - JDM	REVISED -
PLOT SCALE = 20.0000' / in.	DRAWN - KAR	REVISED -
PLOT DATE = 3/27/2020	CHECKED - JJF	REVISED -
	DATE - 3-27-20	FILE - 181149-SHT-PP1-WMain.dgn

**STATE OF ILLINOIS
DEPARTMENT OF TRANSPORTATION**

PLAN & PROFILE	
W MAIN ST	
SCALE: 1" = 20'	SHEET OF SHEETS STA. 50+00 TO STA. 55+00

F.A.U. RTE. 4056	SECTION 19-00070-00-SW	COUNTY MCHENRY	TOTAL SHEETS 18	SHEET NO. 5
CONTRACT NO. 61G63				
ILLINOIS FED. AID PROJECT LIPR(748)				

W MAIN ST



STATE OF ILLINOIS - PROFESSIONAL DESIGN FIRM
 LICENSE NO. - 184-000121 - EXPIRES 4/30/2021
 MODEL: Default
 FILE NAME: I:\Crystal Lake\CRV\181149-SHT-PP2-WMain.dgn
 ...:\Projects\181149_SHT_PP2-WMain.dgn
 I:\Crystal Lake\CRV\181149-SHT-PP2-WMain.dgn

BAXTER & WOODMAN
Consulting Engineers

USER NAME = 642jdm	DESIGNED - JDM	REVISED -
	DRAWN - KAR	REVISED -
PLOT SCALE = 20.0000' / in.	CHECKED - JJF	REVISED -
PLOT DATE = 3/27/2020	DATE - 3-27-20	FILE - 181149-SHT-PP2-WMain.dgn

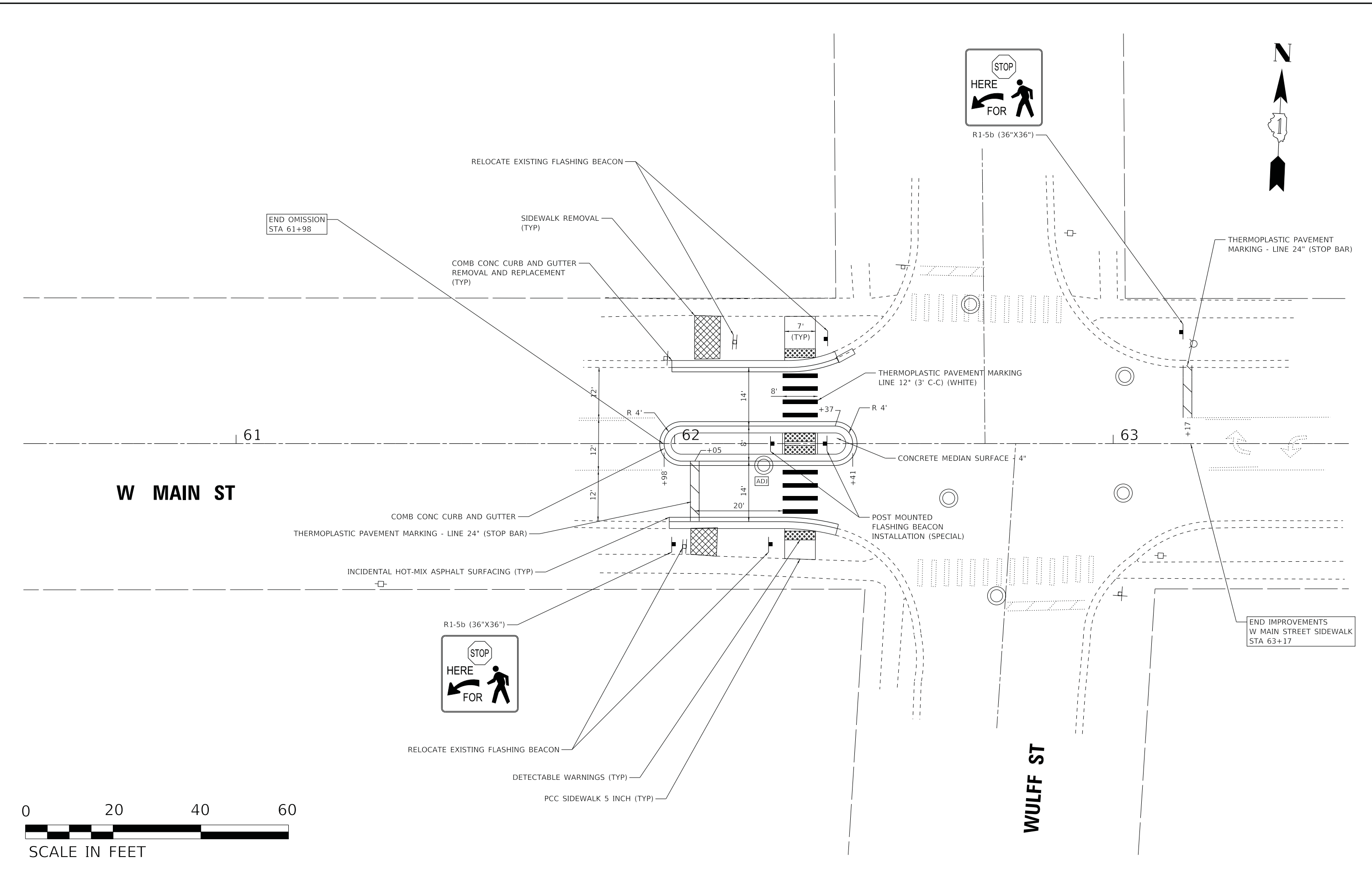
**STATE OF ILLINOIS
DEPARTMENT OF TRANSPORTATION**

**PLAN & PROFILE
W MAIN ST**

SCALE: 1" = 20' SHEET OF SHEETS STA. 55+00 TO STA. 59+00

F.A.U. RTE.	SECTION	COUNTY	TOTAL SHEETS	SHEET NO.
4056	19-00070-00-SW	MCHENRY	18	6
CONTRACT NO. 61G63				
ILLINOIS FED. AID PROJECT LIPR(748)				

STATE OF ILLINOIS - PROFESSIONAL DESIGN FIRM: s:\projects\181149-SHT-Plan1-WMain.dgn
 LICENSE NO. 194-00121 EXPIRES 4/30/24
 3/27/2020 8:28:43 AM
 MODEL: D:\dwg\181149-SHT-Plan1-WMain.dgn
 FILE NAME: I:\C:\Users\lakes\OneDrive\Documents\181149-SHT-Plan1-WMain.dgn



BAXTER & WOODMAN Consulting Engineers	USER NAME = 642jdm	DESIGNED - JDM	REVISED -
	PLOT SCALE = 10.0000' / in.	DRAWN - KAR	REVISED -
	PLOT DATE = 3/27/2020	CHECKED - JJF	REVISED -
		DATE - 3-27-20	FILE - 181149-SHT-Plan1-WMain.dgn

**STATE OF ILLINOIS
DEPARTMENT OF TRANSPORTATION**

**PLAN
W MAIN STREET**

SCALE: 1" = 10'
SHEET OF SHEETS STA. TO STA.

F.A.U. RTE.	SECTION	COUNTY	TOTAL SHEETS	SHEET NO.
4056	19-00070-00-SW	MCHEMRY	18	7
CONTRACT NO. 61G63				
ILLINOIS FED. AID PROJECT LIPR(748)				




BEGIN IMPROVEMENT
W MAIN STREET SIDEWALK
STA 50+30

CARY-ALGONQUIN ROAD

W MAIN ST

MATCH LINE STA 55+00

LEGEND

-  INLET FILTER
-  EROSION CONTROL BLANKET
-  PERIMETER EROSION BARRIER



W MAIN ST

BEGIN OMISSION
W MAIN STREET SIDEWALK
STA 58+46

BRIARGATE ROAD

MATCH LINE STA 55+00

STATE OF ILLINOIS - PROFESSIONAL DESIGN FIRM: s:\projects\181149-SHT-Eros.dgn
 LICENSE NO. - 194-00121 - EXPIRES - 4/30/2021
 3/27/2020 8:28:44 AM
 MODEL: D:\sht\181149-SHT-Eros.dgn
 FILE NAME: I:\C:\Users\Baker\OneDrive\Documents\181149-SHT-Eros.dgn

BAXTER & WOODMAN Consulting Engineers	USER NAME = 642jdm	DESIGNED - JDM	REVISED -
	PLOT SCALE = 20.0000' / in.	DRAWN - KAR	REVISED -
	PLOT DATE = 3/27/2020	CHECKED - JJF	REVISED -
		DATE - 3-27-20	FILE - 181149-SHT-Eros.dgn

**STATE OF ILLINOIS
DEPARTMENT OF TRANSPORTATION**

**EROSION CONTROL PLAN
W MAIN ST**

SCALE: 1" = 20' SHEET OF SHEETS STA. 50+00 TO STA. 58+36

F.A.U. RTE.	SECTION	COUNTY	TOTAL SHEETS	SHEET NO.
4056	19-00070-00-SW	MCHENRY	18	8
			CONTRACT NO. 61G63	
ILLINOIS FED. AID PROJECT LIPR(748)				

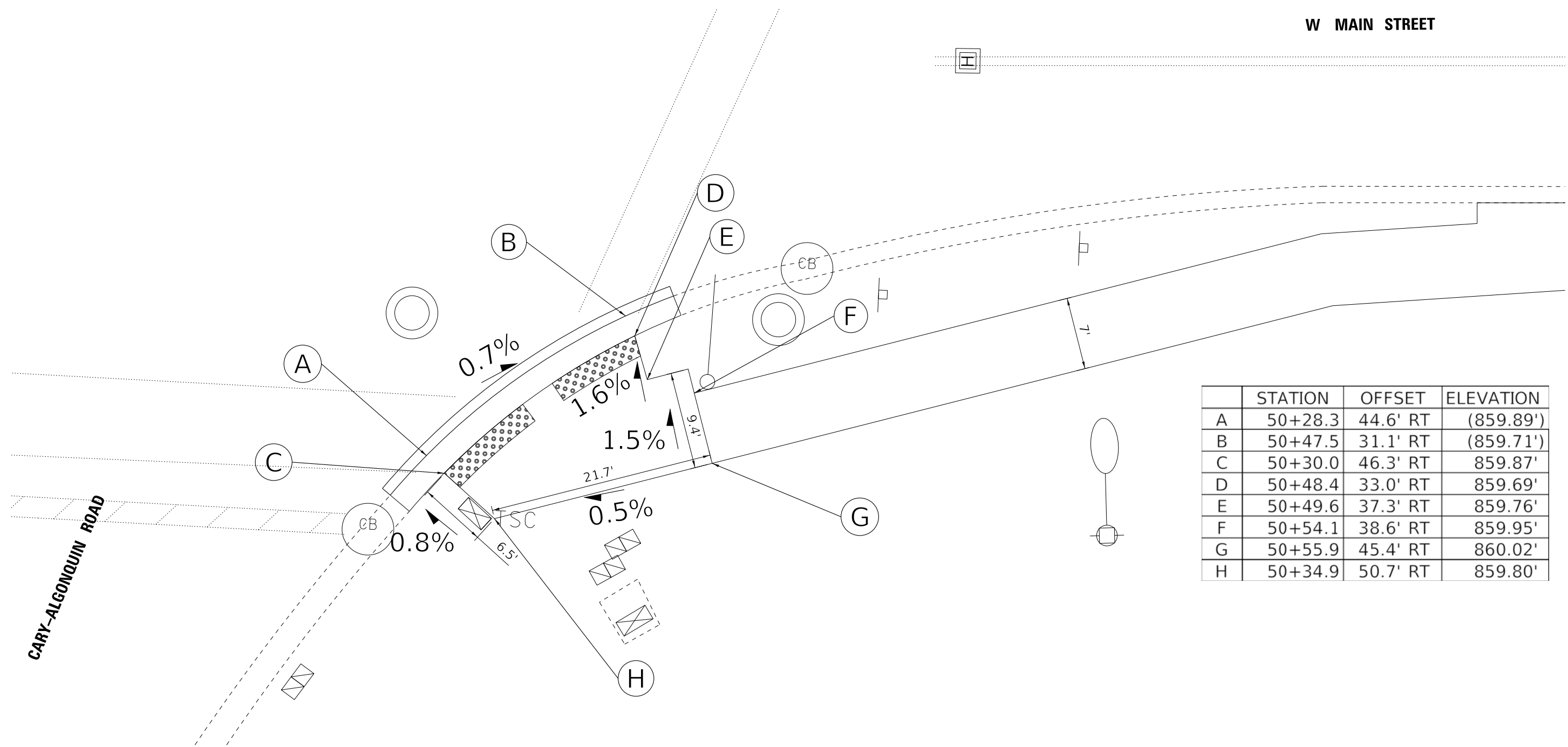


50+00

51

W MAIN STREET

CARY-ALGONQUIN ROAD



	STATION	OFFSET	ELEVATION
A	50+28.3	44.6' RT	(859.89')
B	50+47.5	31.1' RT	(859.71')
C	50+30.0	46.3' RT	859.87'
D	50+48.4	33.0' RT	859.69'
E	50+49.6	37.3' RT	859.76'
F	50+54.1	38.6' RT	859.95'
G	50+55.9	45.4' RT	860.02'
H	50+34.9	50.7' RT	859.80'

STATE OF ILLINOIS - PROFESSIONAL DESIGN FIRM: CARY-ALGONQUIN ROAD, PROJECT NO. 19-00070-00-SW, DRAWING NO. 642JDM, DATE 3/27/2020, EXPIRES 4/30/2021, 8:28:46 AM, I:\CaryAlgonquin\181149-SHT-ADA-CaryAlgonquin.dgn
 MODEL: D:\d\181149-SHT-ADA-CaryAlgonquin.dgn
 FILE NAME: I:\CaryAlgonquin\181149-SHT-ADA-CaryAlgonquin.dgn

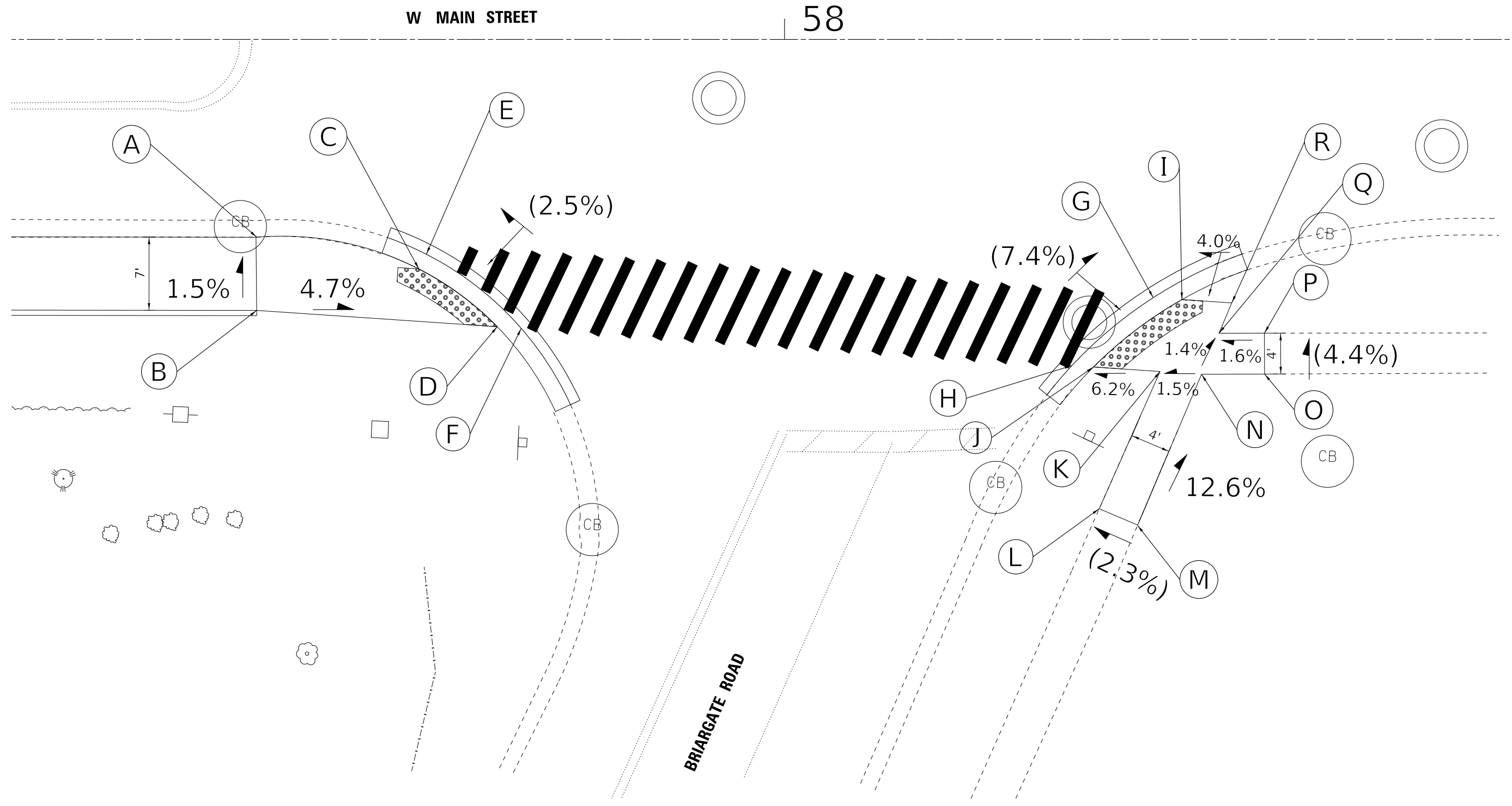
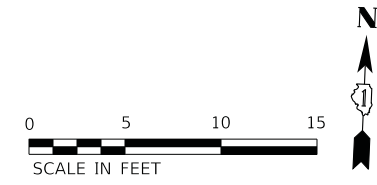
BAXTER & WOODMAN Consulting Engineers	USER NAME = 642jdm	DESIGNED - JDM	REVISED -
	PLOT SCALE = 5.0000 ' / in.	DRAWN - KAR	REVISED -
	PLOT DATE = 3/27/2020	CHECKED - JJF	REVISED -
		DATE - 3-27-20	FILE - 181149-SHT-ADA-CaryAlgonquin.dgn

STATE OF ILLINOIS
DEPARTMENT OF TRANSPORTATION

SIDEWALK DETAILS
MAIN STREET AND CARY-ALGONQUIN ROAD

SCALE: 1" = 5' SHEET 1 OF 3 SHEETS STA. TO STA.

F.A.U. RTE.	SECTION	COUNTY	TOTAL SHEETS	SHEET NO.
4056	19-00070-00-SW	McHENRY	18	9
CONTRACT NO. 61G63				
ILLINOIS FED. AID PROJECT LIPR(748)				



STATE OF ILLINOIS - PROFESSIONAL DESIGN FIRM: s:\projects\181149-SHT-ADA-Briargate.dgn
 LICENSE NO. - 194-00121 - EXPIRES - 4/30/21
 MODEL: D:\dwg\181149-SHT-ADA-Briargate.dgn
 FILE NAME: I:\C:\Users\Baker\OneDrive\Desktop\181149-SHT-ADA-Briargate.dgn

BAXTER & WOODMAN Consulting Engineers	USER NAME = 642jdm	DESIGNED - JDM	REVISED -
	PLOT SCALE = 5.0000' / 1"	DRAWN - KAR	REVISED -
	PLOT DATE = 3/27/2020	CHECKED - JJF	REVISED -
		DATE - 3-27-20	FILE - 181149-SHT-ADA-Briargate.dgn

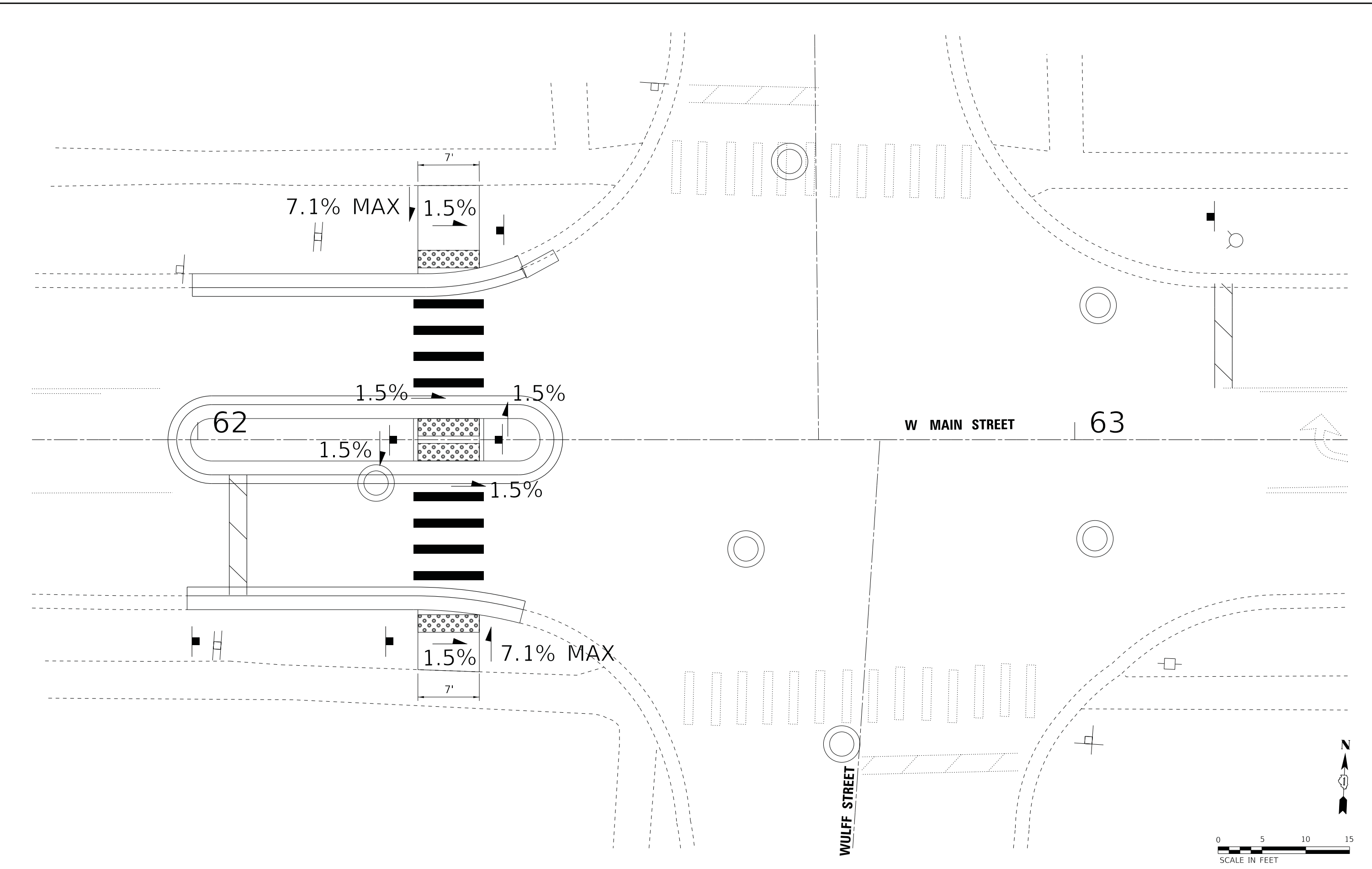
**STATE OF ILLINOIS
DEPARTMENT OF TRANSPORTATION**

**SIDEWALK DETAILS
MAIN STREET AND BRIARGATE ROAD**

SCALE: 1" = 5' SHEET 2 OF 3 SHEETS STA. TO STA.

F.A.U. RTE.	SECTION	COUNTY	TOTAL SHEETS	SHEET NO.
4056	19-00070-00-SW	McHENRY	18	10
CONTRACT NO. 61G63				
ILLINOIS FED. AID PROJECT LIPR(748)				

STATE OF ILLINOIS - PROFESSIONAL DESIGN FIRM
 LICENSE NO. 194-001216 EXPIRES 4/30/2024
 MODEL: D:\d\642jdm\181149-SHT-ADA-Wulff.dgn
 FILE NAME: I:\C\Users\Baker\OneDrive\Documents\181149-SHT-ADA-Wulff.dgn



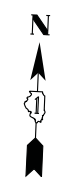
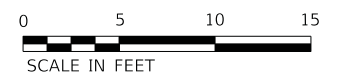
USER NAME = 642jdm	DESIGNED - JDM	REVISED -
PLOT SCALE = 5,0000 ' / in.	DRAWN - KAR	REVISED -
PLOT DATE = 3/27/2020	CHECKED - JJF	REVISED -
	DATE - 3-27-20	FILE - 181149-SHT-ADA-Wulff.dgn

STATE OF ILLINOIS
 DEPARTMENT OF TRANSPORTATION

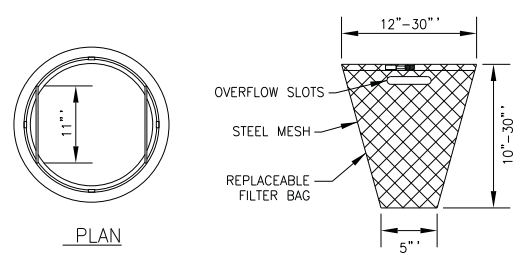
SIDEWALK DETAILS
MAIN STREET AND WULFF STREET

SCALE: 1" = 5'
 SHEET 3 OF 3 SHEETS
 STA. TO STA.

F.A.U. RTE.	SECTION	COUNTY	TOTAL SHEETS	SHEET NO.
4056	19-00070-00-SW	MCHENRY	18	11
CONTRACT NO. 61G63				
ILLINOIS FED. AID PROJECT LIPR(748)				

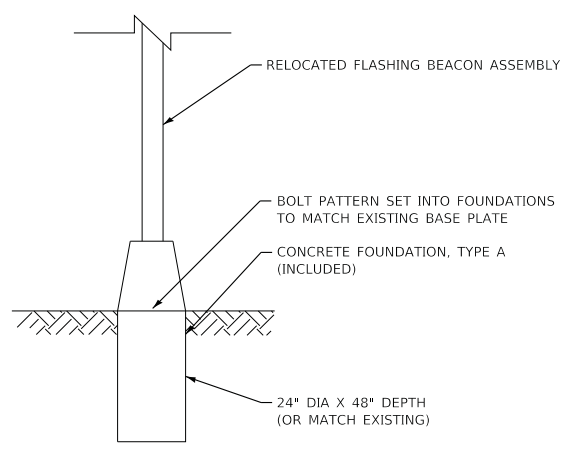


STATE OF ILLINOIS - PROFESSIONAL DESIGN FIRM: \s\c\p\181149-SHT-MiscDetails.dgn
 LICENSE NO. - 194-00121 - EXPIRES: 4/30/21
 MODEL: D:\s\c\p\181149-SHT-MiscDetails.dgn
 FILE NAME: I:\C\p\181149-SHT-MiscDetails.dgn

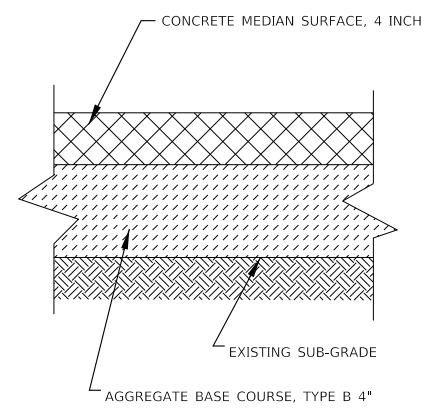


GENERAL NOTES:
 FRAME: TOP RING CONSTRUCTED FROM 1 1/4" x 1 1/4" x 1/8" ANGLE.
 BASE RING CONSTRUCTED OF 1 1/2" x 1/2" x 1/8" CHANNEL.
 HANDLES & SUSPENSION BRACKETS CONSTRUCTED FROM 1/4" x 1 1/4" FLAT. ALL STEEL CONFORMING TO ASTM-A36.
 REPLACEABLE BAG: CONSTRUCTED FROM 4 OZ./SQ. YD. NON-WOVEN POLYPROPYLENE GEOTEXTILE REINFORCED WITH POLYESTER MESH. CONNECTED TO BASE RING WITH STAINLESS STEEL STRAP & LOCK.
 STEEL MESH: REMOVABLE STAINLESS STEEL MESH STRAINER BASKET. 1/4" DIA. HOLE SIZE, 58% OPEN AREA.

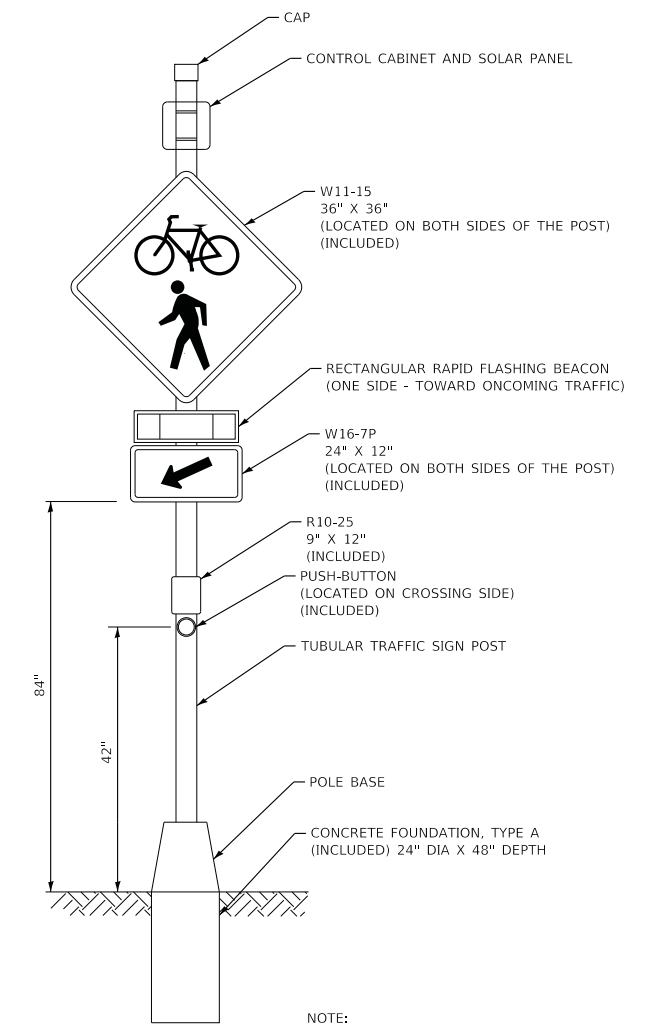
INLET PROTECTION FILTER
NO SCALE



RELOCATE EXISTING FLASHING BEACON FOUNDATION DETAIL
NO SCALE



TYPICAL MEDIAN SECTION
NO SCALE



NOTE:
 1. ALL WIRING AND MOUNTING HARDWARE INCLUDED IN THIS ITEM.
 2. APPLICABLE SIGNAGE AND BEACON LOCATED ON BOTH SIDES OF POST.

POST MOUNTED FLASHING BEACON INSTALLATION (SPECIAL) DETAIL



USER NAME = 642jdm	DESIGNED - JBEW	REVISED -
PLOT SCALE = 20.0000 ' / in.	DRAWN - KAR	REVISED -
PLOT DATE = 3/27/2020	CHECKED - JJF	REVISED -
	DATE - 3-27-20	FILE - 181149-SHT-MiscDetails.dgn

**STATE OF ILLINOIS
DEPARTMENT OF TRANSPORTATION**

MISCELLANEOUS DETAILS

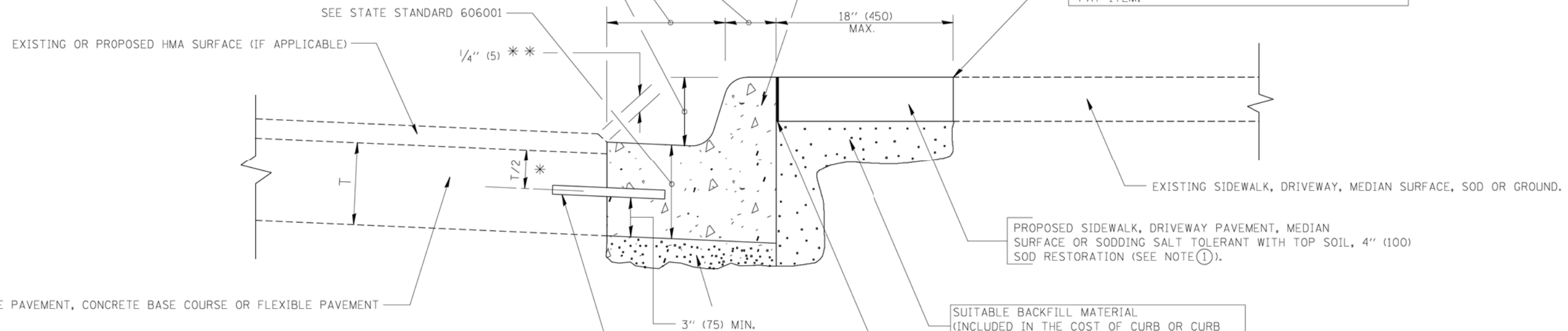
SCALE: N.T.S. SHEET 1 OF 1 SHEETS STA. TO STA.

F.A.U. RTE.	SECTION	COUNTY	TOTAL SHEETS	SHEET NO.
4056	19-00070-00-SW	MCHEMRY	18	12
CONTRACT NO. 61G63			ILLINOIS FED. AID PROJECT LIPR(748)	

VARIABLE - TO MEET EXISTING DIMENSIONS AND FIELD CONDITIONS (SEE NOTE ②)

PROP. CONC. CURB OR CURB AND GUTTER REPLACEMENT IN ACCORDANCE WITH STATE STANDARD 606001. (SEE NOTE ②)

SAW CUT FULL DEPTH - INCLUDED IN THE COST OF SIDEWALK, DRIVEWAY OR MEDIAN SURFACE REMOVAL PAY ITEM.



PROPOSED SIDEWALK, DRIVEWAY PAVEMENT, MEDIAN SURFACE OR SODDING SALT TOLERANT WITH TOP SOIL, 4" (100) SOD RESTORATION (SEE NOTE ①).

SUITABLE BACKFILL MATERIAL (INCLUDED IN THE COST OF CURB OR CURB AND GUTTER REMOVAL AND REPLACEMENT)

PROPOSED 3/4" (20) PREFORMED EXPANSION JOINT AT CONCRETE SIDEWALKS, DRIVEWAYS, AND MEDIANS. (INCLUDED IN THE COST OF CURB OR CURB AND GUTTER REMOVAL AND REPLACEMENT.)

UNSUITABLE SUB-BASE MATERIAL TO BE REMOVED, IF DIRECTED BY THE ENGINEER, SHALL BE REPLACED WITH EITHER SUB-BASE GRANULAR MATERIAL, TYPE B OR ADDITIONAL THICKNESS OF CONCRETE.

REMOVAL AND REPLACEMENT 4" (100) OR LESS IS INCLUDED IN THE COST OF CURB OR CURB AND GUTTER REMOVAL AND REPLACEMENT.

REMOVAL AND REPLACEMENT IN EXCESS OF 4" (100) WILL BE PAID FOR IN ACCORDANCE WITH ARTICLE 109.04 OF THE STANDARD SPECIFICATIONS.

PROPOSED #6 (20) EPOXY COATED TIE BARS 24" (600) LONG AT 24" (600) CENTERS WILL NOT BE PAID FOR SEPARATELY. DELETE EPOXY COATED TIE BARS IF EXISTING TIE BARS ARE USABLE AS DETERMINED BY THE ENGINEER. (SEE NOTE ③).

BASIS OF PAYMENT:
THIS WORK WILL BE PAID FOR AT THE CONTRACT UNIT PRICE PER FOOT (METER) FOR "CURB REMOVAL AND REPLACEMENT" OR "COMBINATION CONCRETE CURB AND GUTTER REMOVAL AND REPLACEMENT".

- * 3" (75) MINIMUM FROM TOP AND BOTTOM OF THE CONCRETE PAVEMENT OR BASE COURSE.
- ** IF THE FINAL SURFACE OF THE PAVEMENT IS CONCRETE, THE GUTTER IS TO BE FLUSH WITH THE PAVEMENT.

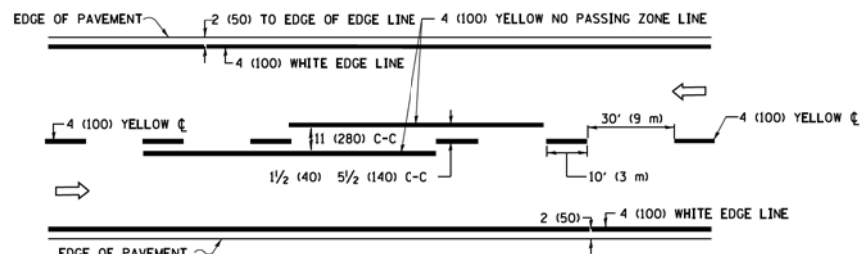
- NOTE:
- ① SIDEWALK, DRIVEWAY PAVEMENT OR MEDIAN SURFACE SHALL BE SIMILAR TO THE MATERIAL BEING REMOVED AND WILL BE PAID FOR SEPARATELY. SODDING, SALT TOLERANT AND TOP SOIL, FURNISH AND PLACE 4" WILL BE PAID FOR SEPARATELY.
 - ② FERTILIZER FOR THE PLACEMENT OF THE SOD IS NOT REQUIRED
 - ③ CURB OR CURB AND GUTTER REPLACEMENT SHALL MATCH THE SHAPE OF THE EXISTING CURB OR CURB AND GUTTER UNLESS OTHERWISE SPECIFIED.
 - ④ FOR CURB OR CURB AND GUTTER REMOVAL AND REPLACEMENT ADJACENT TO FLEXIBLE PAVEMENT DELETE EPOXY COATED TIE BARS.
 - ⑤ LONGITUDINAL BARS, IF ENCOUNTERED IN THE EXISTING CURB OR CURB AND GUTTER, ARE NOT TO BE REPLACED. CUTTING AND REMOVING LONGITUDINAL BARS SHALL BE INCLUDED IN THE COST OF CURB OR CURB AND GUTTER REMOVAL AND REPLACEMENT.
 - ⑥ THE COST OF HMA SURFACE REMOVAL IN THE EXISTING GUTTER FLAG SHALL BE INCLUDED IN THE COST OF THE CURB AND GUTTER REMOVAL AND REPLACEMENT.
 - ⑦ THE REMOVAL AND REPLACEMENT OF THE EXISTING CURB OR CURB AND GUTTER SHALL BE DONE IN ACCORDANCE WITH THE APPLICABLE PORTIONS OF SECTION 440 AND 606 OF THE STANDARD SPECIFICATIONS.
 - ⑧ THE LOCATIONS OF REMOVAL AND REPLACEMENT OF EXISTING CURB OR CURB AND GUTTER SHALL BE DETERMINED BY THE RESIDENT ENGINEER AT THE TIME OF CONSTRUCTION.

CURB OR CURB AND GUTTER REMOVAL AND REPLACEMENT

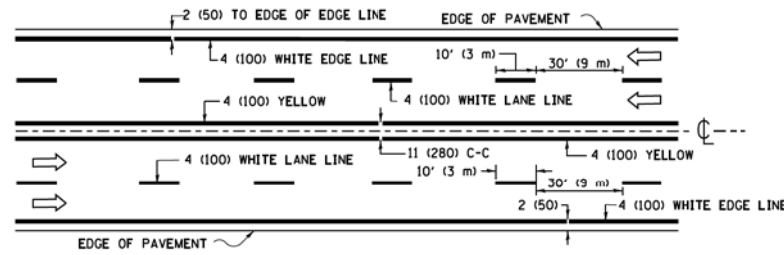
ALL DIMENSIONS ARE IN INCHES (MILLIMETERS) UNLESS OTHERWISE SHOWN.

COPYRIGHT © 2017 BY BAXTER & WOODMAN, INC.
 STATE OF ILLINOIS - PROFESSIONAL DESIGN FIRM
 No. - 108-01272000
 642/Jan
 I:\CrystalLake\CARYV\B199-50te Route to School\CAD\Sheets-PH IN\B149-DISTRICT ONE DETAILS - B0.dgn

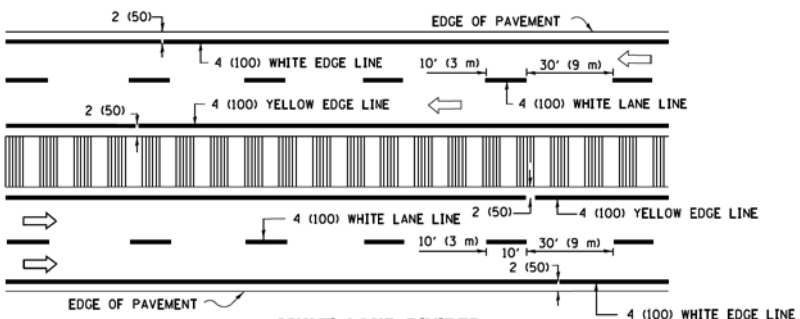
FILE NAME =	USER NAME = drivakosgn	DESIGNED - A. HOUSEH	REVISED - R. SHAH 10-03-96	STATE OF ILLINOIS DEPARTMENT OF TRANSPORTATION	CURB OR CURB AND GUTTER REMOVAL AND REPLACEMENT	F.A. RTE.	SECTION	COUNTY	TOTAL SHEETS	SHEET NO.
es:\pw_work\pwi\dot\drivakosgn\d0108315\bc24.dgn	DRAWN -	REVISED - A. ABBAS 03-21-97	4056			19-00070-00-SW	McHENRY	18	13	
PLOT SCALE = 50.000' / IN.	CHECKED -	REVISED - M. GOMEZ 01-22-01	BD600-06 (BD-24)			CONTRACT NO. 61G63				
PLOT DATE = 12/15/2009	DATE - 03-11-94	REVISED - R. BORO 12-15-09	FED. ROAD DIST. NO. 1 ILLINOIS FED. AID PROJECT LIPR1748							



2-LANE ROADWAY

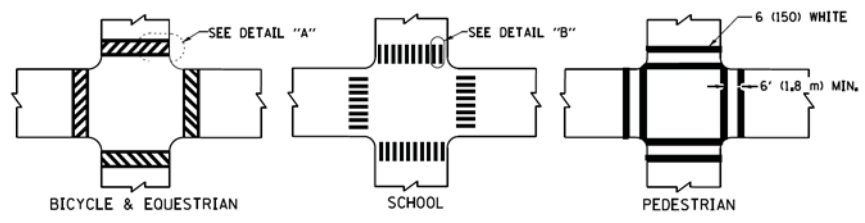


MULTI-LANE UNDIVIDED



MULTI-LANE DIVIDED WITH MEDIAN

TYPICAL LANE AND EDGE LINE MARKING

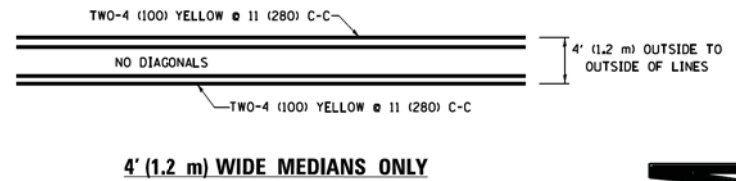


DETAIL "A"

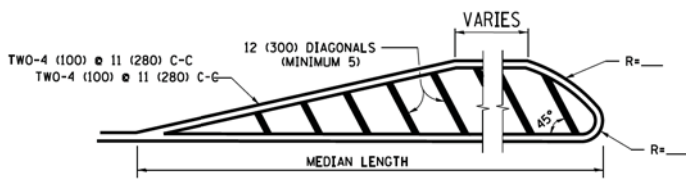
DETAIL "B"

TYPICAL CROSSWALK MARKING

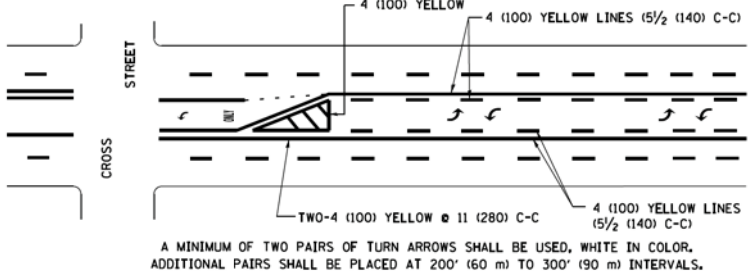
* MARKINGS SHALL BE INSTALLED PARALLEL TO THE CENTERLINE OF THE ROAD WHICH IT CROSSES



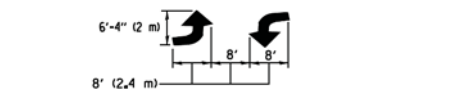
4' (1.2 m) WIDE MEDIANS ONLY



MEDIANS OVER 4' (1.2 m) WIDE



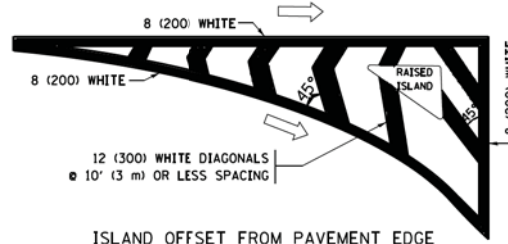
**MEDIAN WITH TWO-WAY LEFT TURN LANE
TYPICAL PAINTED MEDIAN MARKING**



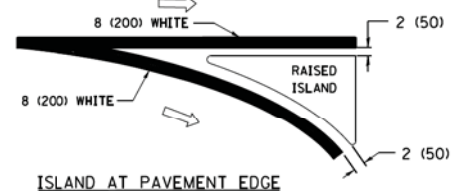
TYPICAL LEFT (OR RIGHT) TURN LANE

TYPICAL TURN LANE MARKING

FULL SIZE LETTERS 8' (2.4 m) AND ARROWS SHALL BE USED.
 AREA = 15.6 SQ. FT. (1.5 m²) ONLY AREA = 20.8 SQ. FT. (1.9 m²)
 * TURN LANES IN EXCESS OF 400' (120 m) IN LENGTH MAY HAVE AN ADDITIONAL SET OF ARROW - "ONLY" INSTALLED MIDWAY BETWEEN THE OTHER TWO SETS OF ARROW - "ONLY".

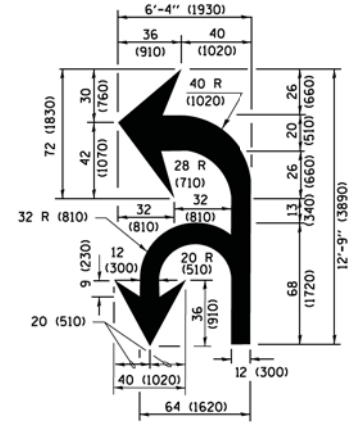


ISLAND OFFSET FROM PAVEMENT EDGE

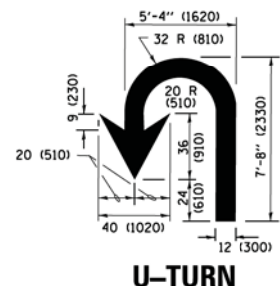


ISLAND AT PAVEMENT EDGE

TYPICAL ISLAND MARKING



COMBINATION LEFT AND U-TURN



U-TURN

LANE REDUCTION TRANSITION

* LANE REDUCTION ARROWS REQUIRED AT SPEEDS OF 45 MPH OR GREATER OR WHEN SPECIFIED IN PLANS.

D(FT)	SPEED LIMIT
345	30
425	35
500	40
580	45
665	50
750	55

TYPE OF MARKING	WIDTH OF LINE	PATTERN	COLOR	SPACING /REMARKS
CENTERLINE ON 2 LANE PAVEMENT	4 (100)	SKIP-DASH	YELLOW	10' (3 m) LINE WITH 30' (9 m) SPACE
CENTERLINE ON MULTI-LANE UNDIVIDED PAVEMENT	2 @ 4 (100)	SOLID	YELLOW	11 (280) C-C
NO PASSING ZONE LINES FOR ONE DIRECTION FOR BOTH DIRECTIONS	4 (100) 2 @ 4 (100)	SOLID SOLID	YELLOW YELLOW	5/2 (140) C-C FROM SKIP-DASH CENTERLINE 11 (280) C-C OMIT SKIP-DASH CENTERLINE BETWEEN
LANE LINES	4 (100) 5 (125) ON FREEWAYS	SKIP-DASH SKIP-DASH	WHITE WHITE	10' (3 m) LINE WITH 30' (9 m) SPACE
DOTTED LINES (EXTENSIONS OF CENTER, LANE OR TURN LANE MARKINGS)	SAME AS LINE BEING EXTENDED	SKIP-DASH	SAME AS LINE BEING EXTENDED	2' (600) LINE WITH 6' (1.8 m) SPACE
EDGE LINES	4 (100)	SOLID	YELLOW-LEFT WHITE-RIGHT	OUTLINE MEDIANS IN YELLOW
TURN LANE MARKINGS	6 (150) LINE; FULL SIZE LETTERS & SYMBOLS (8' (2.4m))	SOLID	WHITE	SEE TYPICAL TURN LANE MARKING DETAIL
TWO WAY LEFT TURN MARKING	2 @ 4 (100) EACH DIRECTION 8' (2.4m) LEFT ARROW	SKIP-DASH AND SOLID IN PAIRS	YELLOW WHITE	10' (3 m) LINE WITH 30' (9 m) SPACE FOR SKIP-DASH 5/2 (140) C-C BETWEEN SOLID LINE AND SKIP-DASH LINE SEE TYPICAL TWO-WAY LEFT TURN MARKING DETAIL
CROSSWALK LINES (PEDESTRIAN) A. DIAGONALS (BIKE & EQUESTRIAN) B. LONGITUDINAL BARS (SCHOOL)	2 @ 6 (150) 12 (300) @ 45° 12 (300) @ 90°	SOLID SOLID SOLID	WHITE WHITE WHITE	NOT LESS THAN 6' (1.8 m) APART 2' (600) APART SEE TYPICAL CROSSWALK MARKING DETAILS.
STOP LINES	24 (600)	SOLID	WHITE	PLACE 4' (1.2 m) IN ADVANCE OF AND PARALLEL TO CROSSWALK, IF PRESENT, OTHERWISE, PLACE AT DESIRED STOPPING POINT, PARALLEL TO CROSSROAD CENTERLINE, WHERE POSSIBLE
PAINTED MEDIANS	2 @ 4 (100) WITH 12 (300) DIAGONALS @ 45° NO DIAGONALS USED FOR 4' (1.2 m) WIDE MEDIANS	SOLID	YELLOW; WHITE; WHITE; ONE WAY TRAFFIC	11 (280) C-C FOR THE DOUBLE LINE SEE TYPICAL PAINTED MEDIAN MARKING.
GORE MARKING AND CHANNELIZING LINES	8 (200) WITH 12 (300) DIAGONALS @ 45°	SOLID	WHITE	DIAGONALS: 15' (4.5 m) C-C (LESS THAN 30MPH (50 km/h)) 20' (6 m) C-C 30MPH (50 km/h) TO 45MPH (70 km/h) 30' (9 m) C-C (OVER 45MPH (70 km/h))
RAILROAD CROSSING	24 (600) TRANSVERSE LINES; "RR" IS 6' (1.8 m) LETTERS; 16 (400) LINE FOR "X"	SOLID	WHITE	SEE STATE STANDARD 780001 AREA OF: "R"=3.6 SQ. FT. (0.33 m ²) EACH "X"=54.0 SQ. FT. (5.0 m ²)
SHOULDER DIAGONALS (REQUIRED FOR SHOULDERS ≥ 8')	12 (300) @ 45°	SOLID	WHITE - RIGHT YELLOW - LEFT	50' (15 m) C-C (LESS THAN 30MPH (50 km/h)) 75' (25 m) C-C (30 MPH (50 km/h) TO 45MPH (70 km/h)) 150' (45 m) C-C (OVER 45MPH (70 km/h))
U TURN ARROW	SEE DETAIL	SOLID	WHITE	16.3 SF
2 ARROW COMBINATION LEFT AND U TURN	SEE DETAIL	SOLID	WHITE	30.4 SF

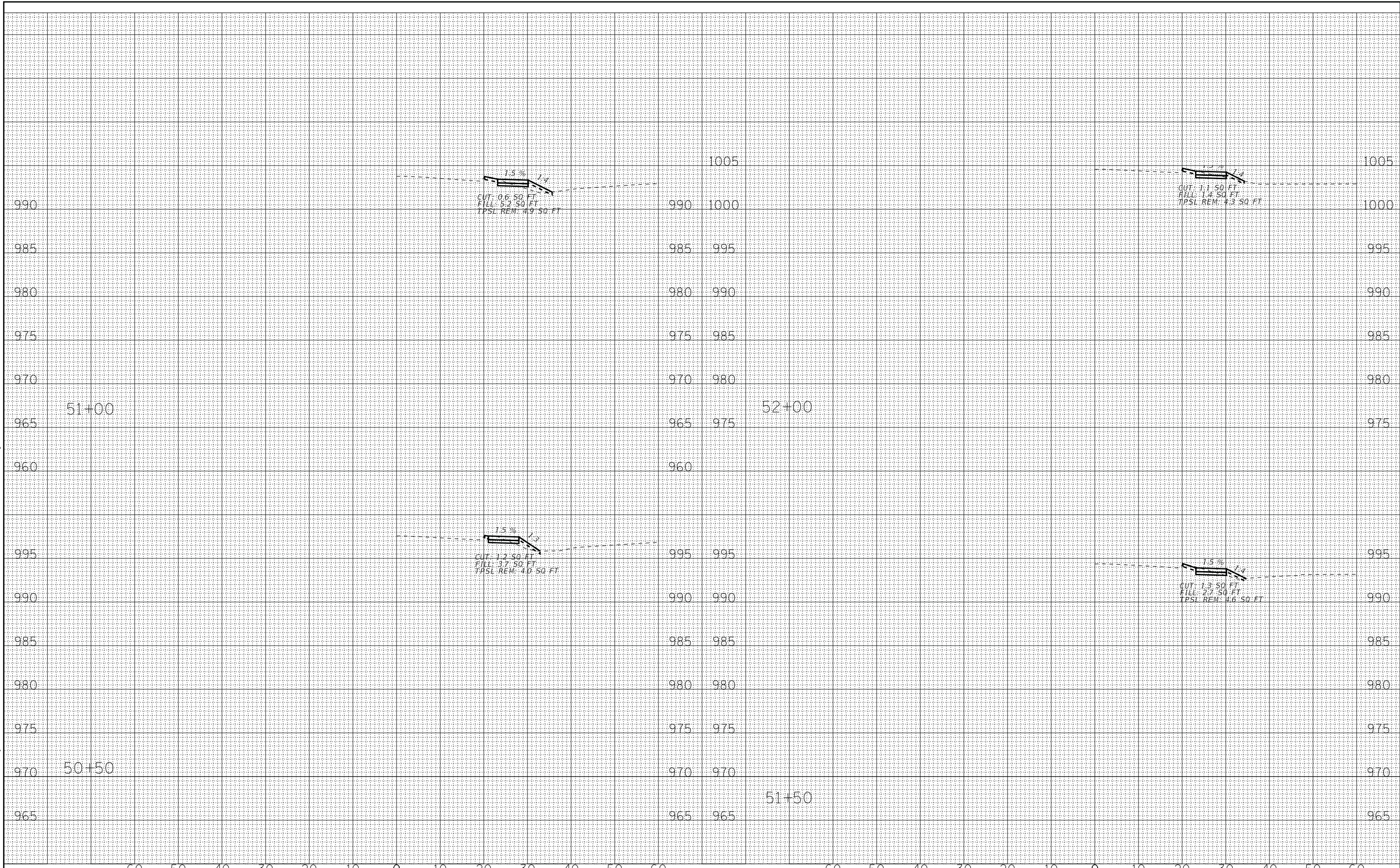
FOR FURTHER DETAILS ON PAVEMENT MARKING REFER TO STANDARD SPECIFICATIONS FOR ROAD AND BRIDGE CONSTRUCTION AND STATE STANDARD 780001.

All dimensions are in inches (millimeters) unless otherwise shown.

COPYRIGHT © 2017, BY BAXTER & WOODMAN, INC.
 STATE OF ILLINOIS - PROFESSIONAL DESIGN FIRM
 PROJECT NO. - 18-0070-00-SW
 DATE - 6/23/2017
 PROJECT NAME - 19-00070-00-SW
 SHEET NO. - 61G63

FILE NAME =	USER NAME =	DESIGNED -	REVISED -	STATE OF ILLINOIS DEPARTMENT OF TRANSPORTATION	DISTRICT ONE TYPICAL PAVEMENT MARKINGS	F.A. RTE.	SECTION	COUNTY	TOTAL SHEETS	SHEET NO.	
W:\distsd\22x34\tcl3.dgn	lejos	DRAWN -	REVISED -			4056	19-00070-00-SW	McHENRY	18	14	
Default		PLOT SCALE =	REVISED -			TC-13		CONTRACT NO. 61G63			
		PLOT DATE =	REVISED -			SCALE: NONE SHEET 1 OF 1 SHEETS STA. TO STA.		ILLINOIS FED. AID PROJECT IPR(748)			

STATE OF ILLINOIS - PROFESSIONAL DESIGN FIRM \pdr\dwf\BWXDefault.dwg
 LICENSE NO. 181-001121 - EXPIRES 4/30/2021
 i:\CrystalLake\CARYV\Bldg-Safe Route to School\CAD\Sheets-PH\181149-SHT-XSec-WMain.dgn
 8:29:58 AM 3/27/2020 642jim



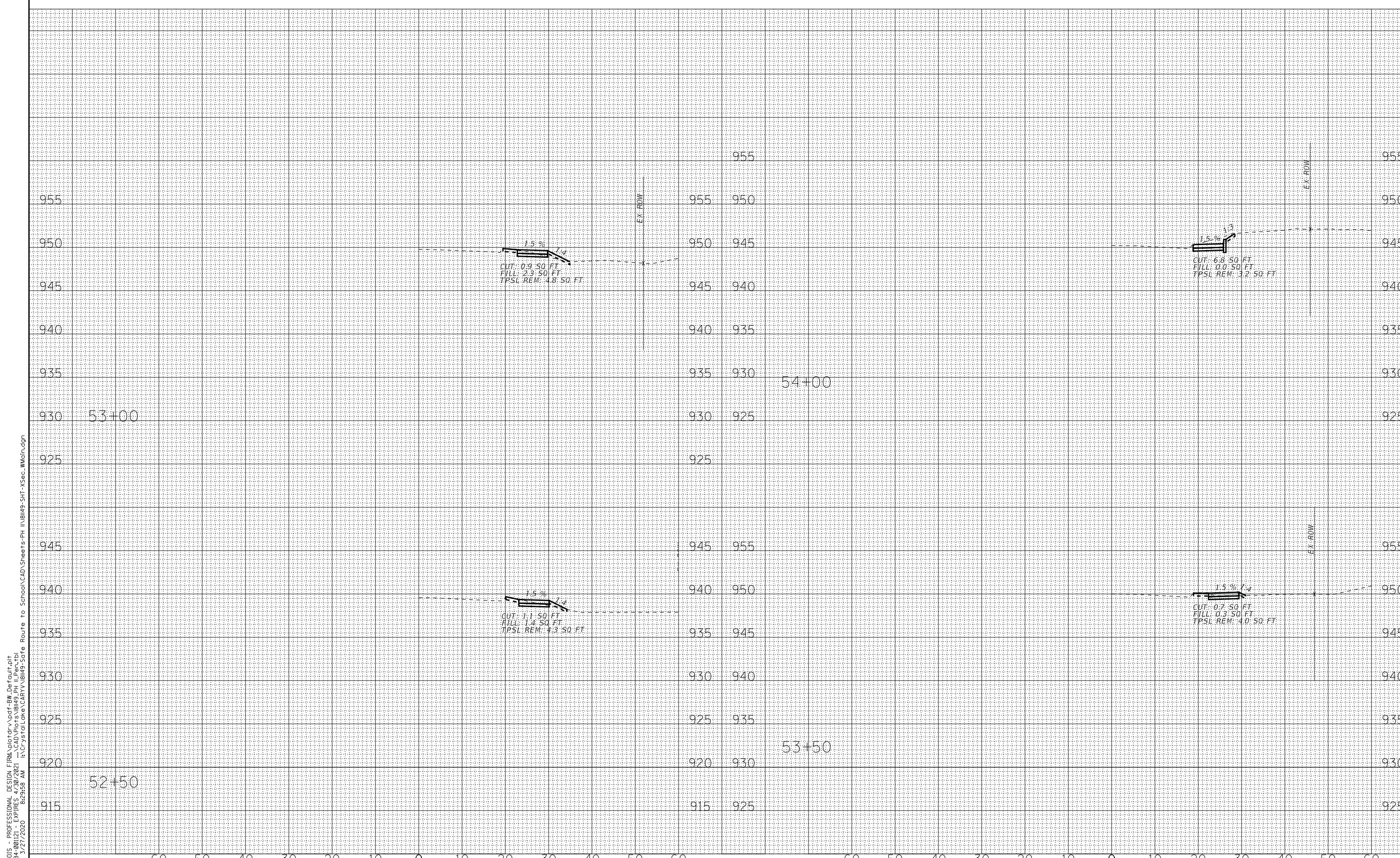
DESIGNED -	REVISED -
DRAWN -	REVISED -
CHECKED -	REVISED -
DATE - 3-27-20	FILE - 181149-SHT-XSec_WMain.dgn

STATE OF ILLINOIS
DEPARTMENT OF TRANSPORTATION

CROSS SECTIONS
W MAIN STREET

SCALE: H: 1"=10' V: 1"=5' STA. 50+50 TO STA. 52+00

F.A. RTE.	SECTION	COUNTY	TOTAL SHEETS	SHEET NO.
4056	19-00070-00-SW	MCHENRY	18	15
FED. ROAD DIST. NO. ILLINOIS FED. AID PROJECT LIPR1748			CONTRACT NO. 61G63	



STATE OF ILLINOIS - PROFESSIONAL DESIGN FIRM \pdr\dwf\B.W.Default.plt
 LICENSE NO. 181-00121 - EXPIRES 4/30/2021 - CAD_Plot_Visual_PH_1_Pen.tbl
 i:\CrystalLake\CARYV\libag-Safe Route to School\CAD\Sheets-PH\181149-SHT-XSec_WMain.dgn
 642jim 3/27/2020 8:29:58 AM



DESIGNED -	REVISED -
DRAWN -	REVISED -
CHECKED -	REVISED -
DATE - 3-27-20	FILE - 181149-SHT-XSec_WMain.dgn

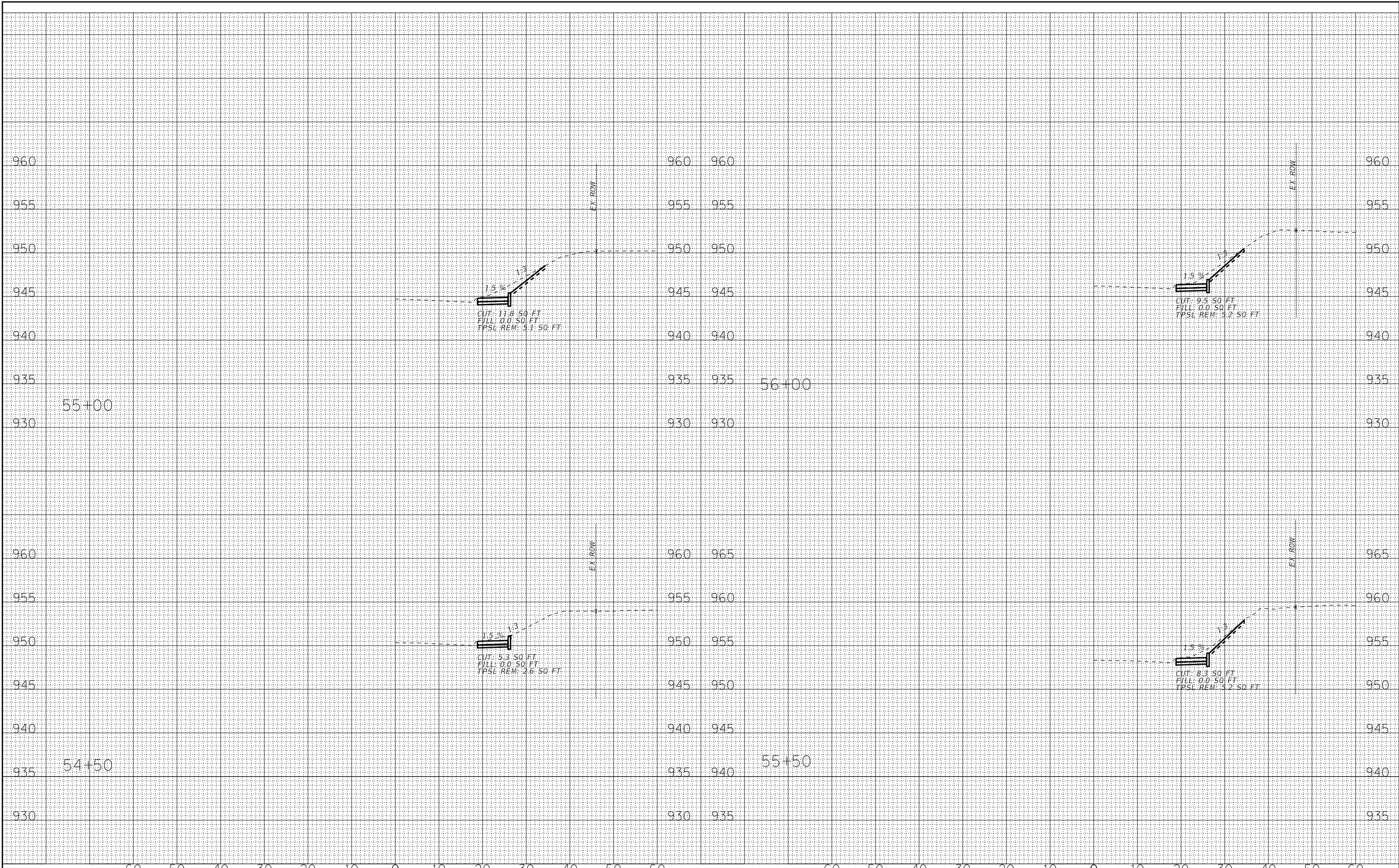
STATE OF ILLINOIS
DEPARTMENT OF TRANSPORTATION

CROSS SECTIONS
W MAIN STREET

SCALE: H: 1"=10' V: 1"=5' STA. 52+50 TO STA. 54+00

F.A. RTE.	SECTION	COUNTY	TOTAL SHEETS	SHEET NO.
4056	19-00070-00-SW	MCHENRY	18	16
FED. ROAD DIST. NO.		ILLINOIS FED. AID PROJECT LIPR1748	CONTRACT NO. 61G63	

STATE OF ILLINOIS - PROFESSIONAL DESIGN FIRM \pdr\dwf\BWXDefault.plt
 LICENSE NO. 181-001121 - EXPIRES 4/30/2021 - \CAD\Plots\Bldg_PH\Pen.tbl
 642Jim 3/27/2020 8:29:59 AM i:\CrystalLake\CARYV\Bldg_Safe Route to School\CAD\Sheets\PH\181149-SHT-XSec_WMain.dgn



DESIGNED -	REVISED -
DRAWN -	REVISED -
CHECKED -	REVISED -
DATE - 3-27-20	FILE - 181149-SHT-XSec_WMain.dgn

STATE OF ILLINOIS
 DEPARTMENT OF TRANSPORTATION

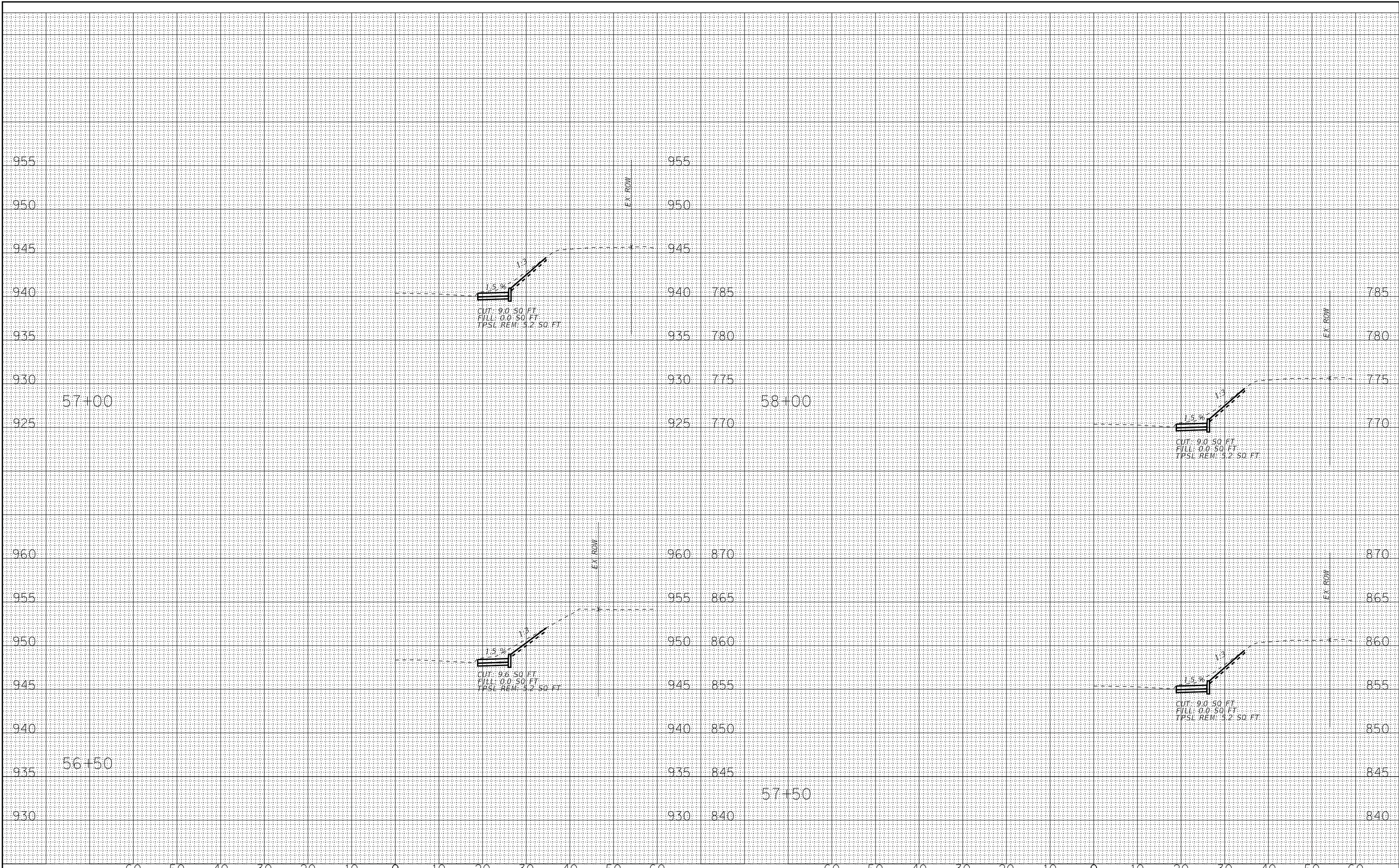
CROSS SECTIONS
 W MAIN STREET

SCALE: H: 1"=10' V: 1"=5'

STA. 54+50 TO STA. 56+00

F.A. RTE.	SECTION	COUNTY	TOTAL SHEETS	SHEET NO.
4056	19-00070-00-SW	MCHENRY	18	17
FED. ROAD DIST. NO.		ILLINOIS FED. AID PROJECT LIPR1748	CONTRACT NO. 61G63	

STATE OF ILLINOIS - PROFESSIONAL DESIGN FIRM \pdr\vd\df\BWXDefault.dwg
 LICENSE NO. 181-001121 - EXPIRES 4/30/2021 - CAD_Plot\Bldg_PH_I_Pen.tbl
 642Jim 3/27/2020 8:29:59 AM i:\CrystalLake\CARYV\Bldg-Safe Route to School\CAD\Sheets-PH\181149-SHT-XSec_WMain.dgn



DESIGNED -	REVISED -
DRAWN -	REVISED -
CHECKED -	REVISED -
DATE - 3-27-20	FILE - 181149-SHT-XSec_WMain.dgn

STATE OF ILLINOIS
 DEPARTMENT OF TRANSPORTATION

**CROSS SECTIONS
 W MAIN STREET**

SCALE: H: 1"=10' V: 1"=5' STA. 56+50 TO STA. 58+00

F.A. RTE.	SECTION	COUNTY	TOTAL SHEETS	SHEET NO.
4056	19-00070-00-SW	MCHENRY	18	18
FED. ROAD DIST. NO. ILLINOIS FED. AID PROJECT LIPRI748			CONTRACT NO. 61G63	