

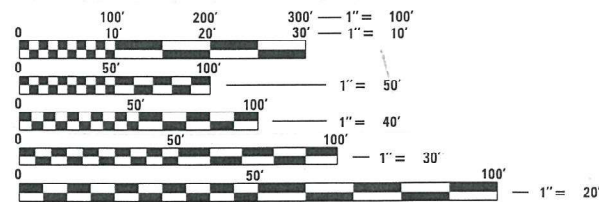
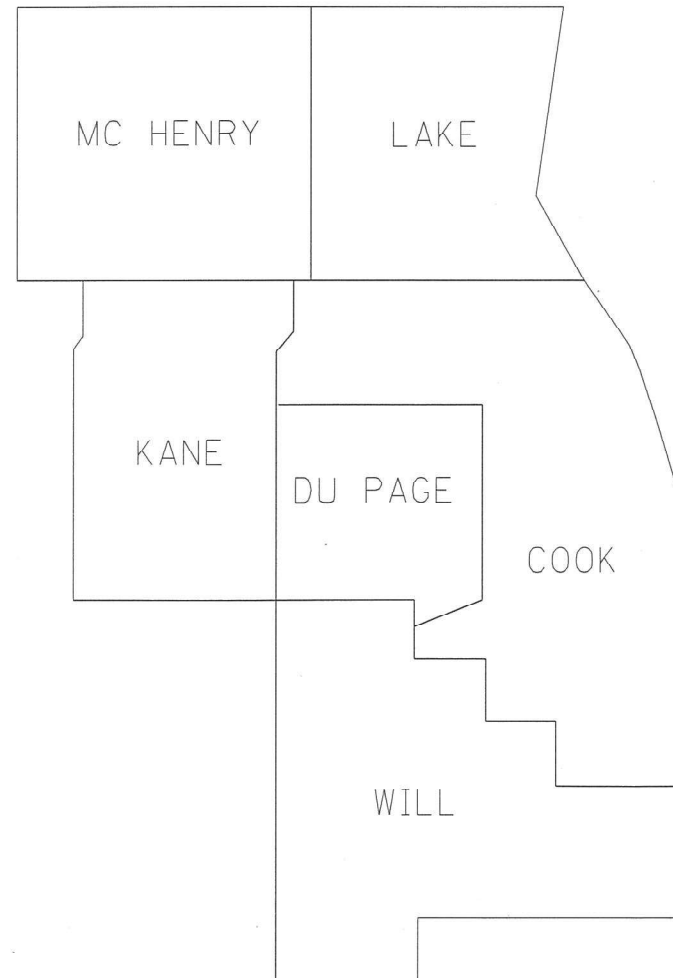
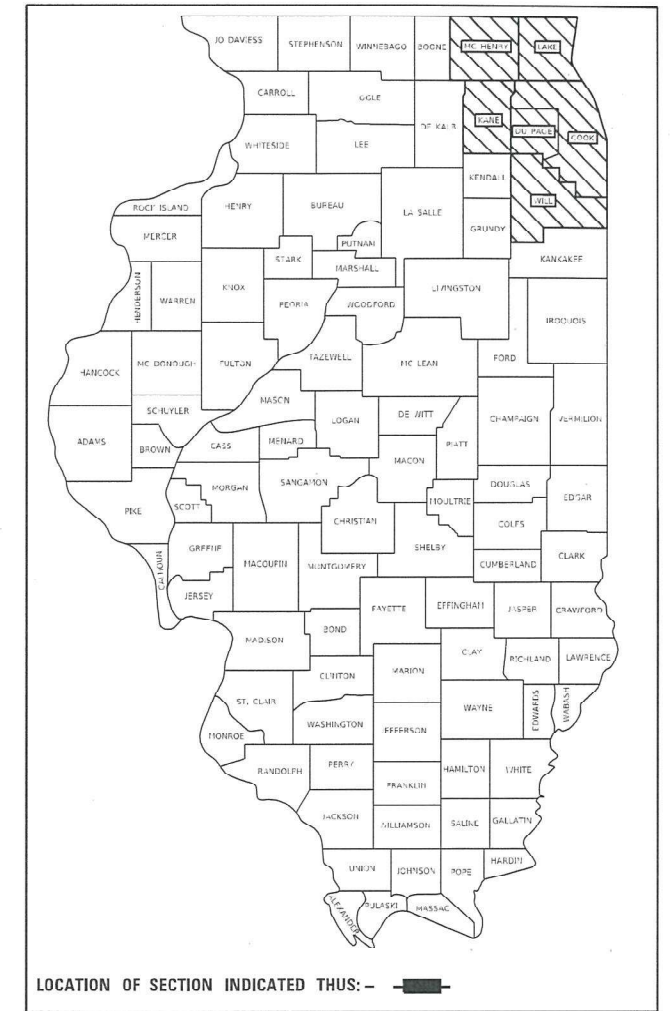
STATE OF ILLINOIS
DEPARTMENT OF TRANSPORTATION

F.A. RTE.	SFCTION	COUNTY	TOTAL SHEETS	SHEET NO.
	D1 HT PVMNT MRK RPR 20-16	VARIOUS	3	1
	ILLINOIS	ILLINOIS		CONTRACT NO. 46525

INDEX OF SHEETS:
1. COVER SHEET
2. STATE STANDARDS
3. SUMMARY OF QUANTITES

PROPOSED
HIGHWAY PLANS

VARIOUS ROUTES
SECTION D1 HT PVMNT MRK RPR 20-16
HIGH TYPE PAVEMENT MARKING
VARIOUS COUNTIES
M-60-009-20



FULL SIZE PLANS HAVE BEEN PREPARED USING STANDARD ENGINEERING SCALES. REDUCED SIZED PLANS WILL NOT CONFORM TO STANDARD SCALES. IN MAKING MEASUREMENTS ON REDUCED PLANS, THE ABOVE SCALES MAY BE USED.

J.U.L.I.E.
JOINT UTILITY LOCATION INFORMATION FOR EXCAVATION
1-800-892-0123
OR 811

STATE OF ILLINOIS
DEPARTMENT OF TRANSPORTATION

SUBMITTED February 5, 2020

Anthony J. Brungby / CRS
REGIONAL ENGINEER

May 8, 2020
Scott A. Elk
ENGINEER OF DESIGN AND ENVIRONMENT

May 8, 2020
James J. Quinn
DIRECTOR OF HIGHWAYS PROJECT IMPLEMENTATION

PRINTED BY THE AUTHORITY
OF THE STATE OF ILLINOIS

STATE STANDARDS

- 701311-03 LANE CLOSURE 2L, 2W MOVING OPERATIONS-DAY ONLY
- 701400-09 APPROACH TO LANE CLOSURE, FREEWAY/EXPRESSWAY
- 701406-12 LANE CLOSURE, FREEWAY/EXPRESSWAY, DAY OPERATIONS ONLY
- 701411-09 LANE CLOSURE, MULTILANE, AT ENTRANCE OR EXIT RAMP, FOR SPEEDS \geq 45 MPH
- 701426-09 LANE CLOSURE, MULTILANE, INTERMITTENT OR MOVING OPER., FOR SPEEDS \geq 45 MPH
- 701456-05 PARTIAL EXIT RAMP CLOSURE FREEWAY/EXPRESSWAY
- 701501-06 URBAN LANE CLOSURE, 2L, 2W, UNDIVIDED
- 701601-09 URBAN LANE CLOSURE, MULTILANE 1W R 2W WITH NONTRAVERSABLE MEDIAN
- 701606-10 URBAN SINGLE LANE CLOSURE, MULTILANE, 2W WITH MOUNTABLE MEDIAN
- 701701-10 URBAN LANE CLOSURE, MULTILANE INTERSECTION
- 701901-08 TRAFFIC CONTROL DEVICES

MODEL: Default
FILE NAME: S:\S:\Contracts\CAD\CoverSheets for Contracts.dgn

REV-SEP

	USER NAME = kienakhonep	DESIGNED -	REVISED -	STATE OF ILLINOIS DEPARTMENT OF TRANSPORTATION	STATE STANDARDS	F.A. RTE.	SECTION	COUNTY	TOTAL SHEETS	SHEET NO.
		DRAWN -	REVISED -							
	PLOT SCALE = 100,0957' / In.	CHECKED -	REVISED -				D1 HT Pvmnt MRK RPR 20-16	VARIOUS	3	2
	PLOT DATE = 2/4/2020	DATE -	REVISED -		SCALE:	SHEET 2	OF 3	SHEETS	STA.	TO STA.
								ILLINOIS	FED. AID PROJECT	CONTRACT NO. 46525

CODE NO.	ITEM	UNIT	TOTAL QUANTITY	CONSTR. CODE
				PAVEMENT MARKING
				100% STATE
				ROADWAY 0021
X7800815	HOT SPRAY THERMOPLASTIC PAVEMENT MARKING LINE 4"	FOOT	1000000	1000000
X7800835	HOT SPRAY THERMOPLASTIC PAVEMENT MARKING LINE 6"	FOOT	50000	50000
X7800845	HOT SPRAY THERMOPLASTIC PAVEMENT MARKING LINE 8"	FOOT	30000	30000
78009000	MODIFIED URETHANE PAVEMENT MARKING - LETTERS AND SYMBOLS	SQ FT	60000	60000
78009004	MODIFIED URETHANE PAVEMENT MARKING - LINE 4"	FOOT	600000	600000
78009006	MODIFIED URETHANE PAVEMENT MARKING - LINE 6"	FOOT	200000	200000
78009008	MODIFIED URETHANE PAVEMENT MARKING - LINE 8"	FOOT	100000	100000
78009012	MODIFIED URETHANE PAVEMENT MARKING - LINE 12"	FOOT	60000	60000
78009024	MODIFIED URETHANE PAVEMENT MARKING - LINE 24"	FOOT	20000	20000
78000100	THERMOPLASTIC PAVEMENT MARKING - LETTERS AND SYMBOLS	SQ FT	100000	100000
78000200	THERMOPLASTIC PAVEMENT MARKING - LINE 4"	FOOT	300000	300000
78000400	THERMOPLASTIC PAVEMENT MARKING - LINE 6"	FOOT	250000	250000
78000500	THERMOPLASTIC PAVEMENT MARKING - LINE 8"	FOOT	30000	30000
78000600	THERMOPLASTIC PAVEMENT MARKING - LINE 12"	FOOT	75000	75000
78000620	THERMOPLASTIC PAVEMENT MARKING - LINE 18"	FOOT	500	500
78000650	THERMOPLASTIC PAVEMENT MARKING - LINE 24"	FOOT	30000	30000
X0327979	PAVEMENT MARKING REMOVAL-GRINDING	SQ FT	350000	350000
X0327980	PAVEMENT MARKING REMOVAL- WATER BLASTING	SQ FT	200000	200000

MODEL Default
FILE Name: S:\Contracts\CAD\CoverSheets for Contracts.dgn

USER NAME = kenenakhonep	DESIGNED -	REVISED -
	DRAWN -	REVISED -
PLOT SCALE = 100,0019 ' / In.	CHECKED -	REVISED -
PLOT DATE = 2/4/2020	DATE -	REVISED -

**STATE OF ILLINOIS
DEPARTMENT OF TRANSPORTATION**

SUMMARY OF QUANTITIES

SCALE: SHEET 3 OF 3 SHEETS STA. TO STA.

F.A. RTE.	SECTION	COUNTY	TOTAL SHEETS	SHEET NO.
	D1 HT Pvmnt MRK RPR 20-16	VARIOUS	3	3
			CONTRACT NO. 46525	
		ILLINOIS	FED. AID PROJECT	

REV-SEP