

STATE OF ILLINOIS  
DEPARTMENT OF TRANSPORTATION

F.A. RTE.	SECTION	COUNTY	TOTAL SHEETS	SHEET NO.
D 1 App Paint Pvt Mkg 20-32		COOK	5	1
		ILLINOIS	CONTRACT NO. 46544	

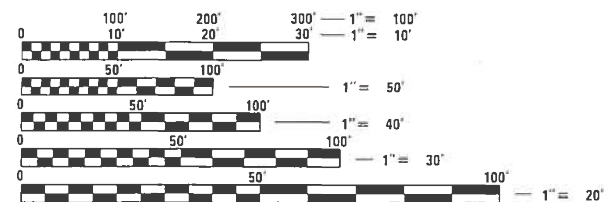
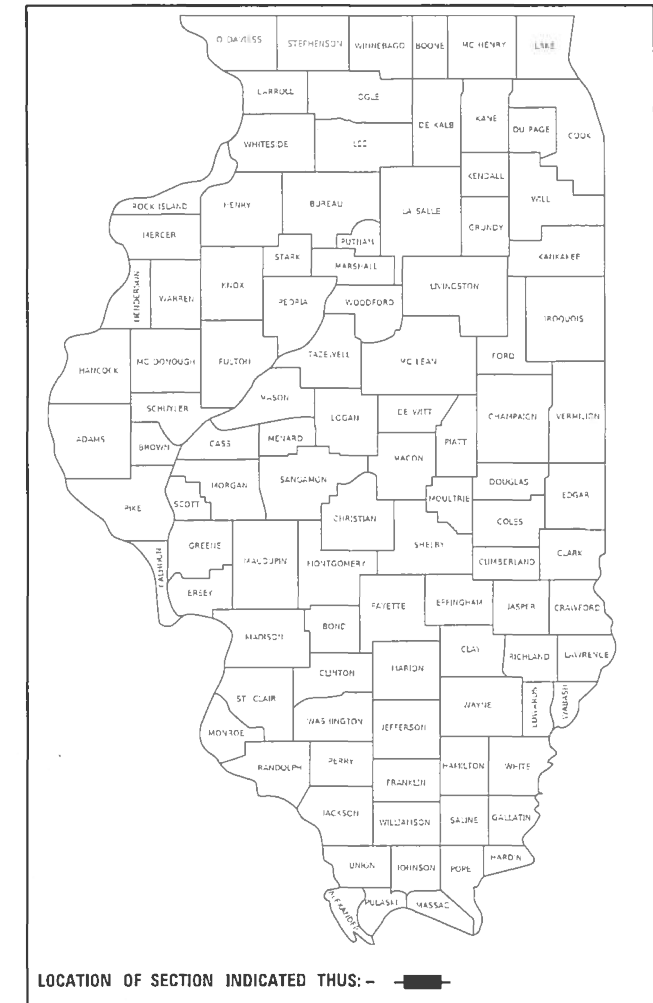
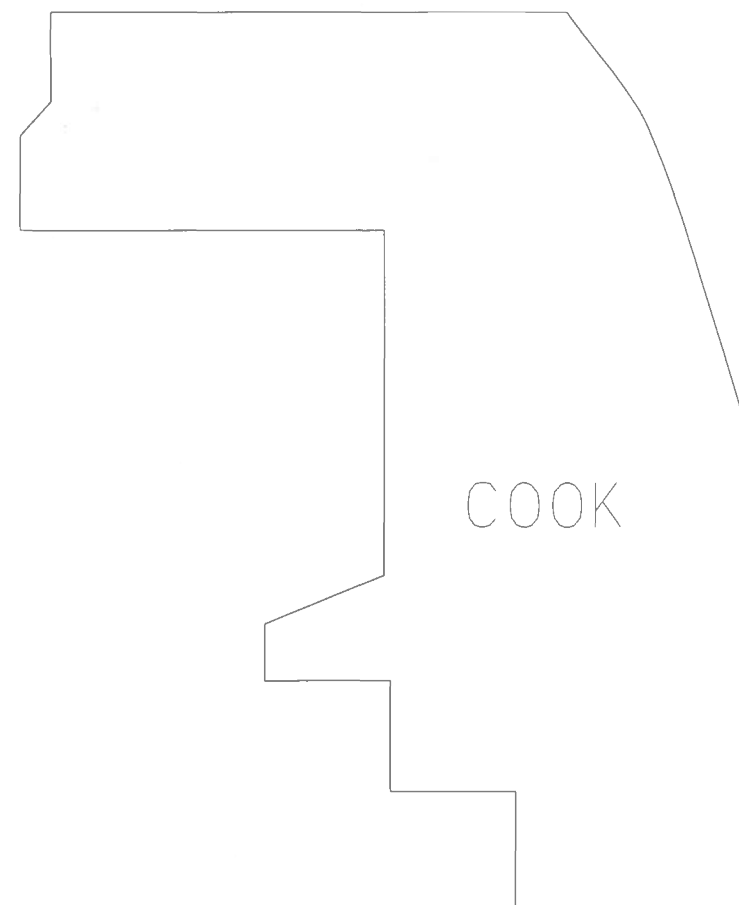
INDEX OF SHEETS

1. COVER SHEET
2. STATE STANDARD
3. SUMMARY OF QUANTITIES
4. LOCATION MAP NORTH COOK COUNTY
5. LOCATION MAP SOUTH COOK COUNTY

# PROPOSED HIGHWAY PLANS

VARIOUS ROUTES  
D1 APP PAINT PVT MKG 20-32  
PAINT PAVEMENT MARKING  
COOK COUNTY

M-60-030-20



FULL SIZE PLANS HAVE BEEN PREPARED USING STANDARD ENGINEERING SCALES. REDUCED SIZED PLANS WILL NOT CONFORM TO STANDARD SCALES. IN MAKING MEASUREMENTS ON REDUCED PLANS, THE ABOVE SCALES MAY BE USED.

J.U.L.I.E.  
JOINT UTILITY LOCATION INFORMATION FOR EXCAVATORS  
1-800-892-0123  
OR 811

STATE OF ILLINOIS  
DEPARTMENT OF TRANSPORTATION

SUBMITTED March 17 20 20

*Anthony A. Orsoly, P.E.*  
REGIONAL ENGINEER

May 8, 2020

*Scott A. Elk*  
ENGINEER OF DESIGN AND ENVIRONMENT

May 8, 2020

*James J. Gu*  
DIRECTOR OF HIGHWAYS PROJECT IMPLEMENTATION

PRINTED BY THE AUTHORITY  
OF THE STATE OF ILLINOIS

## STATE STANDARDS

- 701301-04 LANE CLOSURE, 2L, 2W, SHORT TIME OPERATIONS
- 701311-03 LANE CLOSURE 2L, 2W MOVING OPERATIONS-DAY ONLY
- 701426-09 LANE CLOSURE, MULTILANE, INTERMITTENT OR MOVING OPER., FOR SPEED  $\geq$  45 MPH
- 701427-05 LANE CLOSURE, MULTILANE, INTERMITTENT OR MOVING OPER., FOR SPEED  $\leq$  40 MPH
- 701901-08 TRAFFIC CONTROL DEVICES
- 781001-05 TYPICAL PAVEMENT MARKINGS

MODEL: Default  
 FILE NAME: S:\S\Contracts\CAD\CoverSheets for Contracts.dgn

	USER NAME = kenenakhonep	DESIGNED -	REVISED -	<b>STATE OF ILLINOIS DEPARTMENT OF TRANSPORTATION</b>	<b>STATE STANDARD</b>			F.A. RTE.	SECTION	COUNTY	TOTAL SHEETS	SHEET NO.	
		DRAWN -	REVISED -										
	PLOT SCALE = 99.9984 ' / in.	CHECKED -	REVISED -										
	PLOT DATE = 3/14/2020	DATE -	REVISED -			SCALE:	SHEET 2	OF 5	SHEETS	STA.	TO STA.		
								ILLINOIS		FED. AID PROJECT			
										CONTRACT NO. 46544			

## SUMMARY OF QUANTITIES

			100% STATE
PAY CODE	ITEM DESCRIPTION	UNIT	URBAN 021 TOTAL QUANTITY
78001110	PAINT PAVEMENT MARKING - LINE 4",	FOOT	8,500,000
78001130	PAINT PAVEMENT MARKING - LINE 6",	FOOT	100,000
78001140	PAINT PAVEMENT MARKING - LINE 8",	FOOT	100,000

MODEL: Default  
 FILE NAME: S:\Contracts\CAD\CoverSheets for Contracts.dgn

USER NAME = kenenakhonop	DESIGNED -
	DRAWN -
PLOT SCALE = 100.0235' / in.	CHECKED -
PLOT DATE = 3/14/2020	DATE -

REVISED -	REVISED -
	REVISED -
	REVISED -

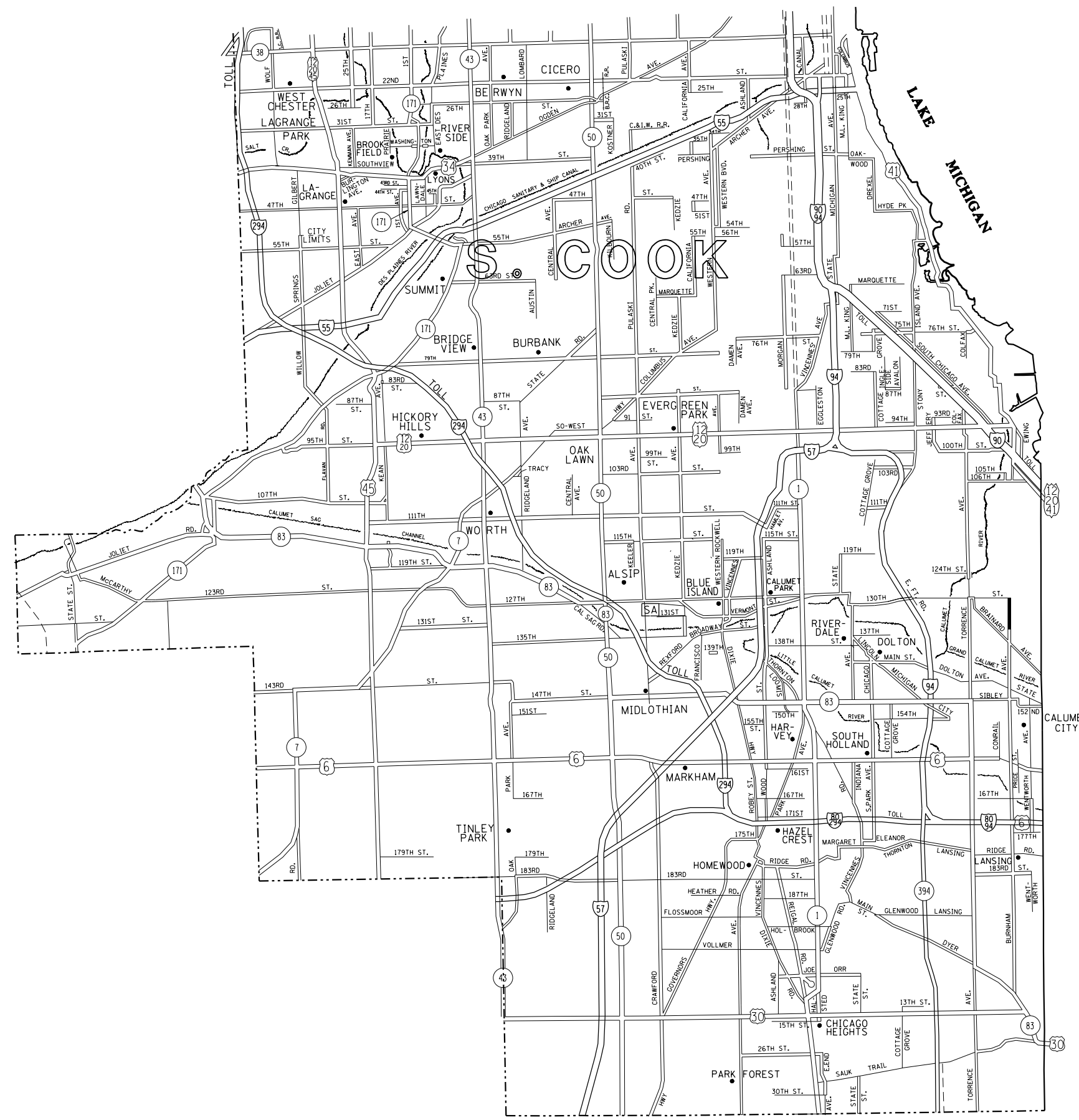
**STATE OF ILLINOIS  
DEPARTMENT OF TRANSPORTATION**

**SUMMARY OF QUANTITIES**

SCALE: SHEET 3 OF 5 SHEETS STA. TO STA.

F.A. RTE.	SECTION	COUNTY	TOTAL SHEETS	SHEET NO.
	D1 APP Paint PVT MKG 20-32	COOK	5	3
CONTRACT NO. 46544				
ILLINOIS FED. AID PROJECT				





MODEL: Default  
 FILE NAME: S:\S\Contract\CAD\CoverSheets for Contracts.dgn

USER NAME = kenenakhonep	DESIGNED -	REVISED -
PLOT SCALE = 100.0435' / in.	DRAWN -	REVISED -
PLOT DATE = 3/14/2020	CHECKED -	REVISED -
	DATE -	REVISED -

**STATE OF ILLINOIS  
 DEPARTMENT OF TRANSPORTATION**

**LOCATION MAP  
 SOUTH COOK COUNTY**

SCALE: SHEET 5 OF 5 SHEETS STA. TO STA.

F.A. RTE.	SECTION	COUNTY	TOTAL SHEETS	SHEET NO.
	D1 APP Paint PVT MKG 20-32	COOK	5	5
CONTRACT NO. 46544				
ILLINOIS FED. AID PROJECT				