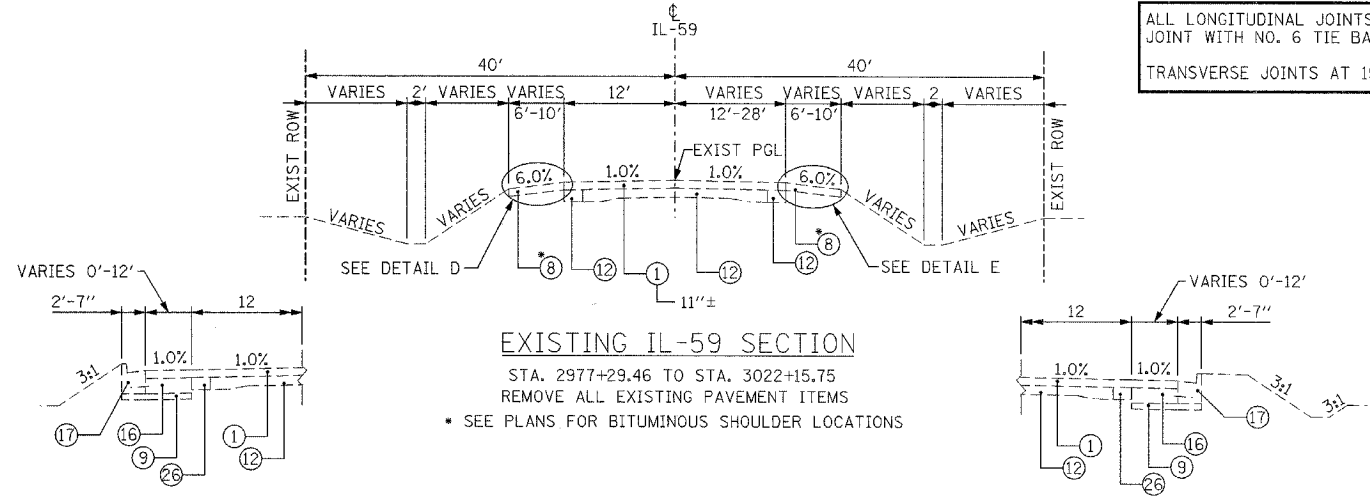


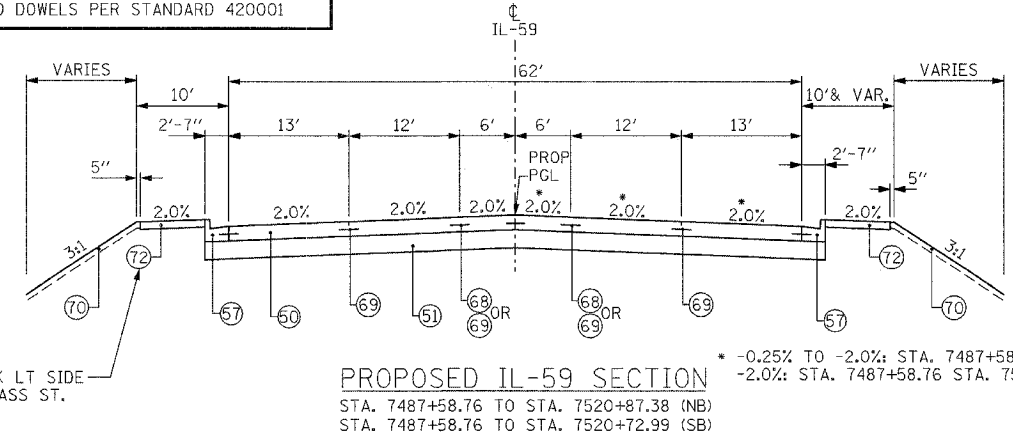
F.A.I. RTE.	SECTION	COUNTY	TOTAL SHEETS	SHEET NO.
55	*	WILL	608	20
STA.	TO STA.			
FED. ROAD DIST. NO. 1	ILLINOIS	FED. AID PROJECT		
* (26, 26HB-18114) R-2		CONTRACT NO. 60363		

ALL LONGITUDINAL JOINTS AND BARS ON IL59 TO BE LONGITUDINAL CONSTRUCTION JOINT WITH NO. 6 TIE BARS @ 24" CTS UNLESS OTHERWISE NOTED  
 TRANSVERSE JOINTS AT 15' SPACING TYP. AND DOWELS PER STANDARD 420001



**EXISTING IL-59 SECTION**

STA. 2977+29.46 TO STA. 3022+15.75  
 REMOVE ALL EXISTING PAVEMENT ITEMS  
 \* SEE PLANS FOR BITUMINOUS SHOULDER LOCATIONS



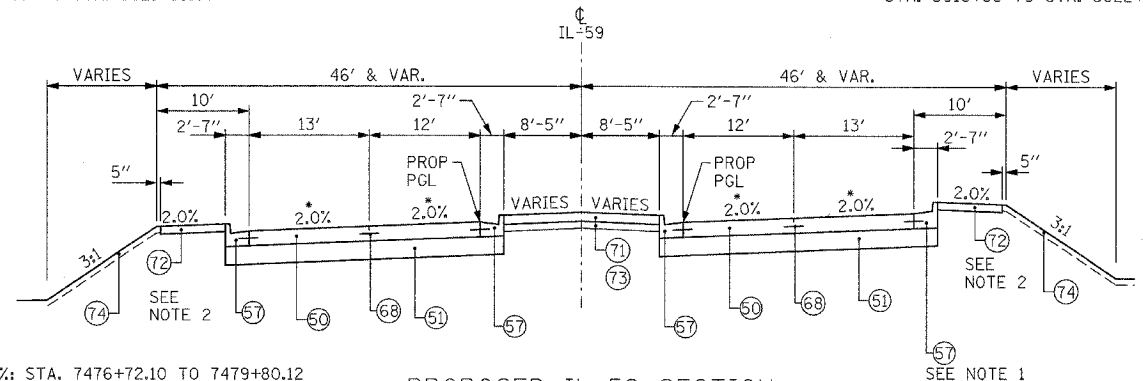
**PROPOSED IL-59 SECTION**

STA. 7487+58.76 TO STA. 7520+87.38 (NB)  
 STA. 7487+58.76 TO STA. 7520+72.99 (SB)

\* -0.25% TO -2.0%: STA. 7487+58.76 TO STA. 7488+20.00  
 -2.0%: STA. 7487+58.76 STA. 7520+87.38

DETAIL D  
 STA. 3016+68 TO STA. 3021+89.67

DETAIL E  
 STA. 3016+66 TO STA. 3022+15.75

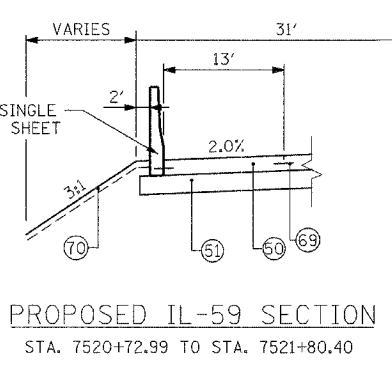


**PROPOSED IL-59 SECTION**

STA. 7476+72.10 TO STA. 7479+80.12  
 2% CROSS SLOPE AT SEIL ROAD INTERSECTION  
 FOR INTERSECTION PAVEMENT TYPICAL SECTION  
 SEE NB AND SB RAMP SECTIONS ON SHEET 22

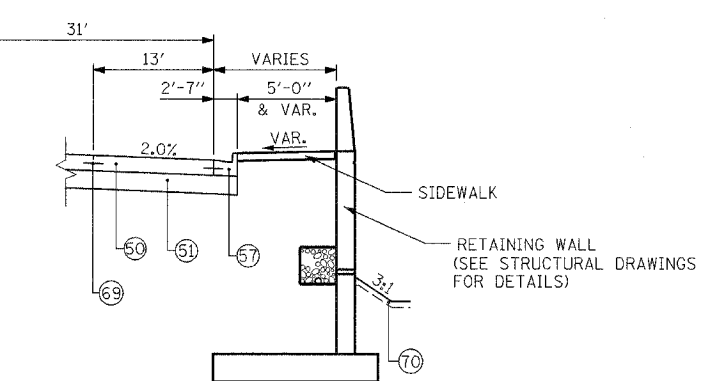
\* 2.0%: STA. 7476+72.10 TO 7479+80.12

NOTE:  
 PORTION OF MEDIAN TO BE COMPLETED  
 AFTER TEMPORARY PAVEMENT IS REMOVED.



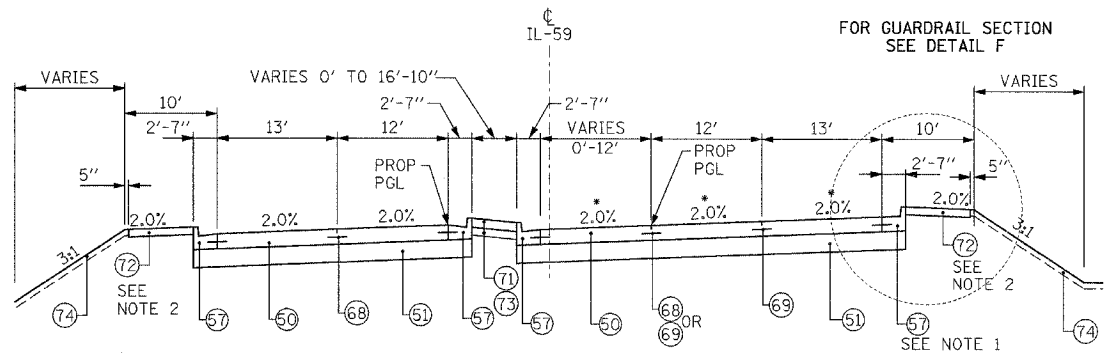
**PROPOSED IL-59 SECTION**

STA. 7520+72.99 TO STA. 7521+80.40



**PROPOSED IL-59 SECTION**

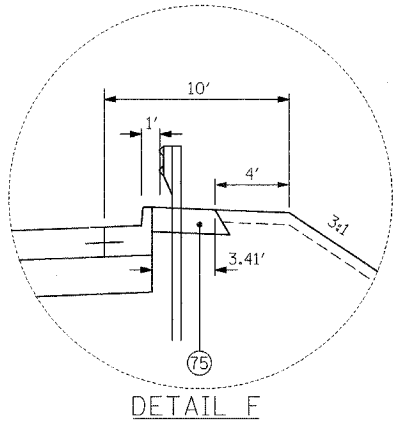
STA. 7520+87.38 TO STA. 7522+07.54



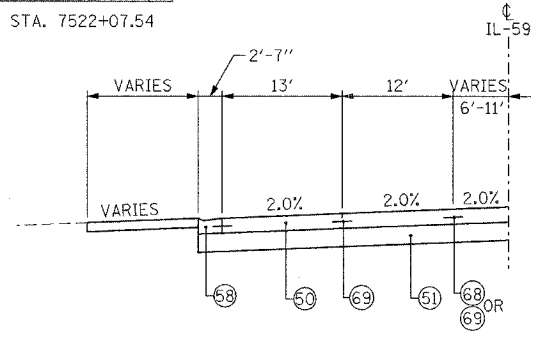
**PROPOSED IL-59 SECTION**

STA. 7479+80.12 TO STA. 7487+58.76

\* 2.0%: STA. 7479+80.12 TO STA. 7486+80.00  
 2.0% TO -0.25%: STA. 7486+80.00 TO STA. 7487+58.76



DETAIL F



**PROPOSED DRIVEWAY OPENINGS**

TYPICAL DRIVEWAY OPENINGS  
 MAX. 8% RESIDENTIAL  
 MAX. 6% COMMERCIAL

- NOTES:
- CONTRACTOR SHALL CONSTRUCT GUTTER SLOPE AT 2%. SLOPE DIRECTION SHALL MATCH ROADWAY.
  - SIDEWALK TO BE OMITTED SOUTH OF 7486+91.47 LT & SOUTH OF 7498+81.36 RT.

REMOVAL

- 1 BITUMINOUS CONCRETE PAVEMENT
- 2 BIT. RESURFACING 3 1/2" AND VARIES
- 3 HMA BASE CSE 8"
- 4 BITUMINOUS SHOULDER
- 5 SUB BASE GRA. MATERIAL 4"
- 6 PIPE UNDERDRAIN 6"
- 7 P.C.C. PAVEMENT, 10" AND VARIES
- 8 AGG. SHOULDER STONE TYPE B
- 9 AGG. SUBGRADE 4"
- 10 POL HMA SC SMA N80 1 3/4
- 11 POL HMA BC SMA N80 1 3/4
- 12 P.C.C. BASE COURSE 9"-7"-9"
- 13 CONC GUTTER TYPE B 6"
- 14 AGG. SUBGRADE (VARIES)
- 15 EARTH EXCAVATION
- 16 BIT. BASE COURSE 10"
- 17 CONC GUTTER TYPE B-6.24
- 18 GRAVEL BASE COURSE
- 19 CONC BASE COURSE
- 20 GRANULAR SUB-BASE 8"±
- 21 CONC. BARRIER, DOUBLE FACE, 42" HEIGHT
- 22 BARRIER BASE
- 23 AGGREGATE SUBGRADE 12"
- 24 STORM SEWER
- 25 FENCE (REMOVAL)
- 26 STABILIZED SUB-BASE 4"
- 27 HMA BASE CSE 2 1/2"
- 28

**PROPOSED LEGEND**

- 60 P.C.C. PAVEMENT JOINTED 9 3/4"
- 61 AGGREGATE SUBGRADE 12"
- 62 P HMA SC "F" N90 - 2" \*\*
- 63 HMA BC IL-19.0 N90 - 13 3/4" \*\*
- 64 PIPE UNDERDRAINS 6"
- 65 AGGREGATE SHOULDERS, TYPE B 8"
- 66 CHAIN LINK FENCE, 4'
- 67 CURB AND GUTTER TYPE B-6.24
- 68 DEPRESSED CURB AND GUTTER TYPE B-6.24
- 69 HMA SHOULDERS 13"
- 70 HMA SHOULDERS 8"
- 71 FURNISHED EXCAVATION
- 72 AGGREGATE SUBGRADE

= INCIDENTAL ITEMS

- 63 P HMA SC "F" N90 - 2" \*\*
- 64 P HMA BC IL19.0 N90 - 15" \*\*
- 65 STAB SUBBASE HMA 4"
- 66 HMA SC "C" N50 - 2" \*\*\*
- 67 HMA BC IL-19.0 N50 - 7" \*\*\*
- 68 LONGITUDINAL SAWED JOINT WITH NO. 6 TIE BARS @ 30" CTS
- 69 LONGITUDINAL CONSTRUCTION JOINT WITH NO. 6 TIE BARS @ 24" CTS
- 70 SODDING, SALT TOLERANT - 4" TOPSOIL
- 71 CONCRETE MEDIAN SURFACE, 5" (SPECIAL)
- 72 7' - PCC SIDEWALK 5"
- 73 AGGREGATE BASE COURSE, TYPE B 4"
- 74 SEEDING, CLASS 2A - 4" TOPSOIL
- 75 HMA STAB AT SPBOR (PAID FOR AS HMA SHOULDERS 8")
- 76 SAWED LONGITUDINAL JOINT WITH NO. 6 TIE BARS @ 18" CTS

REVISIONS	
NAME	DATE

ILLINOIS DEPARTMENT OF TRANSPORTATION  
 FAI 55 AT FAP 338 ILLINOIS ROUTE 59  
 SECTION: (26, 26HB-18114) R-2  
**IL-59 TYPICAL SECTION**  
 STA. 7476+15 TO STA. 7527+00

SCALE: N.T.S. DRAWN BY: JB  
 DATE: 03/14/08 CHECKED BY: ACL

**TENG**  
 TENG & ASSOCIATES, INC.  
 ENGINEERS AND ARCHITECTS  
 305 N. MICHIGAN AVE. CHICAGO, IL 60610  
 TELEPHONE: 312-567-9000

BONDHUJO  
 3-14-2008, 8:52:08  
 T:\DOCUMENT\1837290\CIVIL\BGM\TSCORR\A.DGN  
 1 2 3 4 5 6 7 8 9 10 11 12 13 14 15 16 17 18 19 20 21 22 23 24 25 26 27 28 29 30 31 32 33 34 35 36 37 38 39 40 41 42 43 44 45 46 47 48 49 50 51 52 53 54 55 56 57 58 59 60 61 62 63