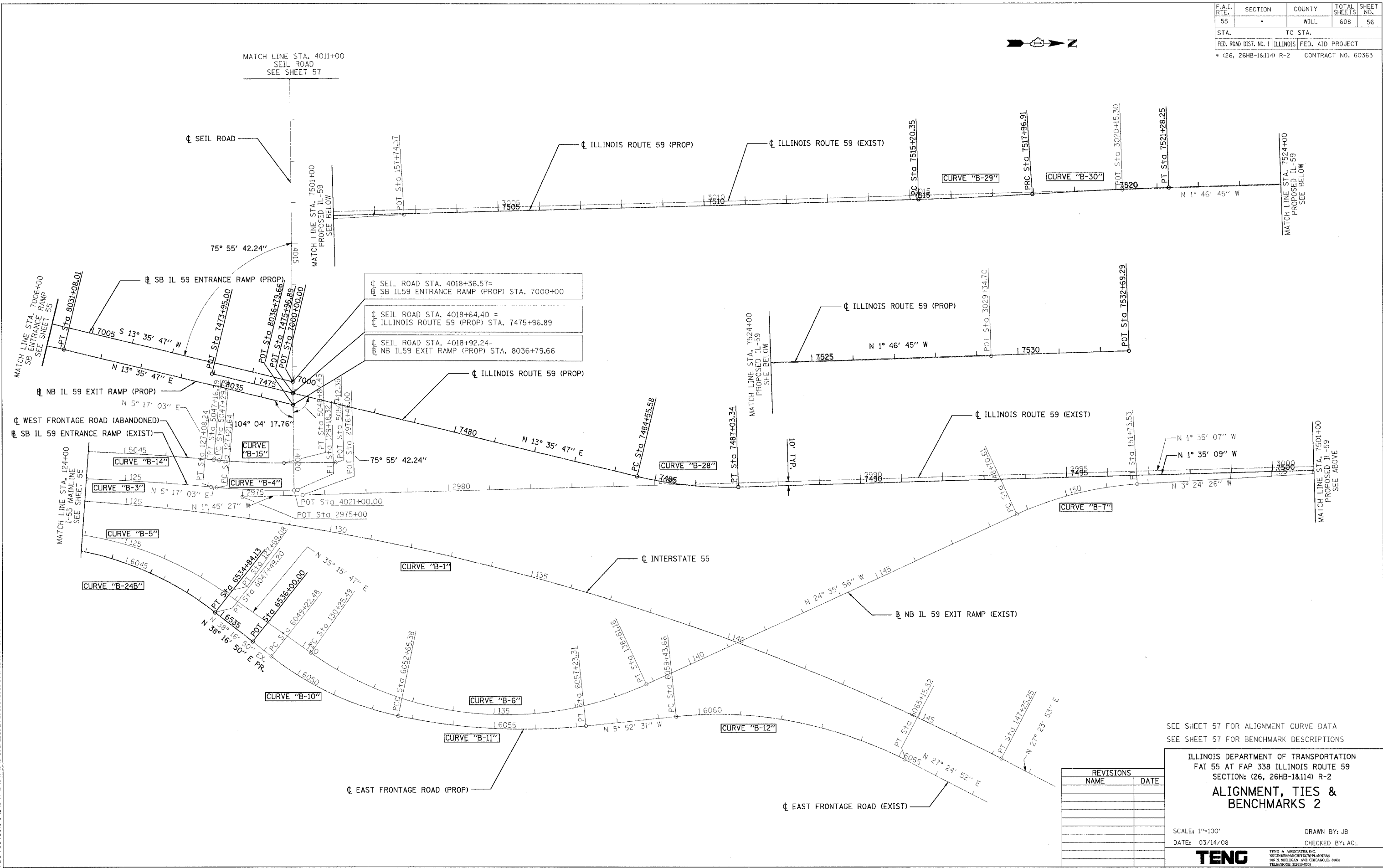
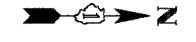


F.A.I. RTE.	SECTION	COUNTY	TOTAL SHEETS	SHEET NO.
55		WILL	608	56
STA.		TO STA.		
FED. ROAD DIST. NO. 1		ILLINOIS FED. AID PROJECT		
* (26, 264B-1&114) R-2		CONTRACT NO. 60363		



SEIL ROAD STA. 4018+36.57 =  
 SB IL59 ENTRANCE RAMP (PROP) STA. 7000+00  
  
 SEIL ROAD STA. 4018+64.40 =  
 ILLINOIS ROUTE 59 (PROP) STA. 7475+96.89  
  
 SEIL ROAD STA. 4018+92.24 =  
 NB IL59 EXIT RAMP (PROP) STA. 8036+79.66

SEE SHEET 57 FOR ALIGNMENT CURVE DATA  
SEE SHEET 57 FOR BENCHMARK DESCRIPTIONS

REVISIONS	
NAME	DATE

ILLINOIS DEPARTMENT OF TRANSPORTATION  
 FAI 55 AT FAP 338 ILLINOIS ROUTE 59  
 SECTION: (26, 264B-1&114) R-2  
**ALIGNMENT, TIES & BENCHMARKS 2**

SCALE: 1"=100'  
 DATE: 03/14/08

DRAWN BY: JB  
 CHECKED BY: ACL

**TENG**

TENG & ASSOCIATES, INC.  
 300 N. MICHIGAN AVE. CHICAGO, IL 60601  
 TELEPHONE: 312-661-2000

\\ALTO0530\LDON...EXH0050\K.DON...EXH0050\K.DON...ALTO0530\LDON...ALTO0530\LDON...ALTO0530\LDON...  
 3-15-2008, 2:42:41  
 T:\DOCUMENT\192730\CHW\ADGN\ALTO0530\LDON...  
 1 2 3 4 5 6 7 8 9 10 11 12 13 14 15 16 17 18 19 20 21 22 23 24 25 26 27 28 29 30 31 32 33 34 35 36 37 38 39 40 41 42 43 44 45 46 47 48 49 50 51 52 53 54 55 56 57 58 59 60 61 62 63