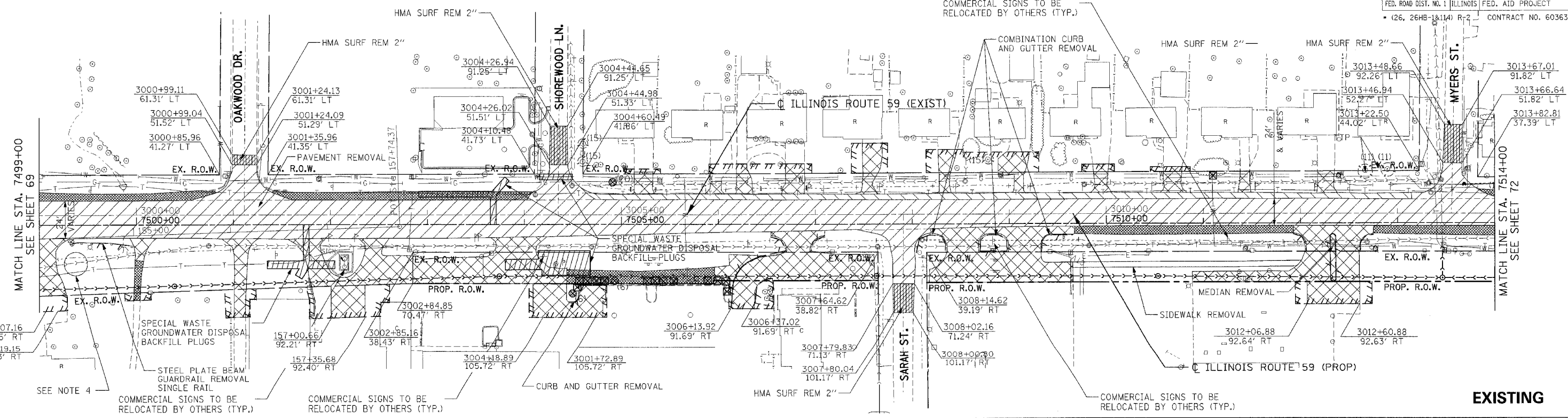
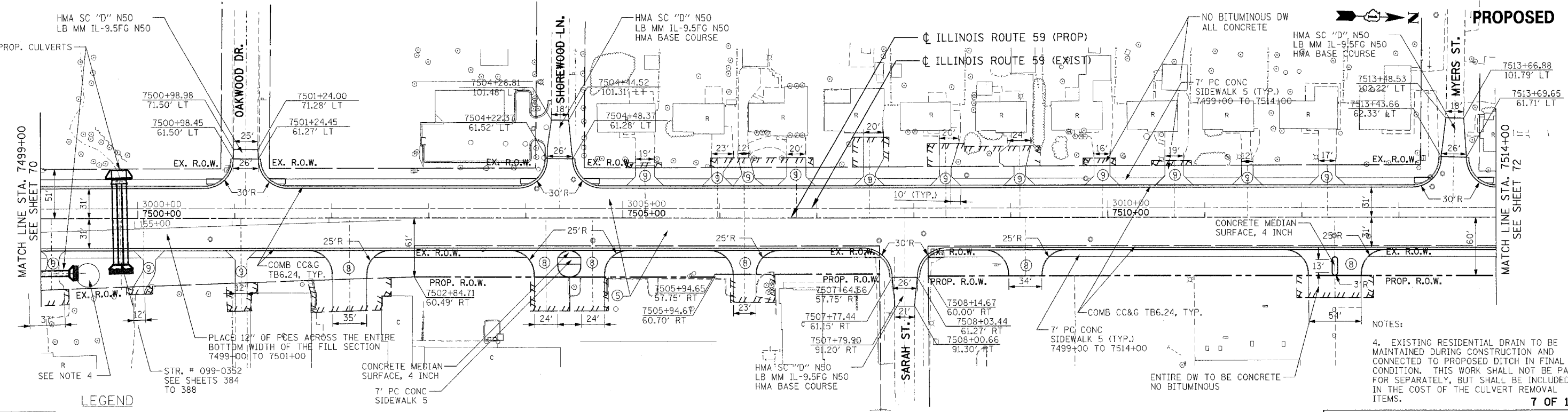


F.A.I. SECTION	COUNTY	TOTAL SHEETS	SHEET NO.
55	WILL	608	71
STA. TO STA.		ILLINOIS FED. AID PROJECT	
FED. ROAD DIST. NO. 1		CONTRACT NO. 60363	



**EXISTING**



**PROPOSED**

NOTES:  
 4. EXISTING RESIDENTIAL DRAIN TO BE MAINTAINED DURING CONSTRUCTION AND CONNECTED TO PROPOSED DITCH IN FINAL CONDITION. THIS WORK SHALL NOT BE PAID FOR SEPARATELY, BUT SHALL BE INCLUDED IN THE COST OF THE CULVERT REMOVAL ITEMS.

7 OF 12

**LEGEND**

	PAVEMENT REMOVAL
	PAVED SHOULDER REMOVAL (INCLUDES GORE AREAS)
	DRIVEWAY PAVEMENT REMOVAL (INCL. PARKING LOTS)
	AGGREGATE REMOVAL TO BE PAID FOR AS EARTH EXCAVATION
	HOT-MIX ASPHALT SURFACE REMOVAL, 2" SEE SHEET 422 FOR DETAILS
	LINEAR REMOVALS
	TREE REMOVAL (WITH DIAMETER)
	BUSH/SHRUB REMOVAL (REMOVAL INCLUDED IN COST OF EARTHWORK)
	TREE TRUNK PROTECTION (TTP)

- ① NB & SB IL59 RAMP  
PCC PVT 9 3/4 JOINTD STAB SUBBASE HMA 4 AGG SUBGRADE 12
- ② HMA SHOULDERS 8 AGG SUBGRADE 12
- ③ I-55 AUX LANE WIDENING  
HMA PAVT FD 17 AGG SUBGRADE 12
- ④ HMA SHOULDERS 13 AGG SUBGRADE 12
- ⑤ IL ROUTE 59  
PCC PVT 9 3/4 JOINTD AGG SUBGRADE 12

- ⑥ SEIL ROAD  
HMA PAVT FD 15 3/4 AGG SUBGRADE 12
- ⑦ EAST FRONTAGE ROAD  
HMA PAVT FD 9 AGG SUBGRADE 12
- ⑧ PCC DRIVEWAY PAVT 8
- ⑨ PCC DRIVEWAY PAVT 6

**NOTES:**  
 1. SEE SHEET 216 TO SHEET 220 FOR DRAINAGE SCHEDULE.  
 2. COST OF PLANTER REMOVAL SHALL BE INCLUDED IN THE COST OF PAVEMENT REMOVAL.  
 3. SEE SHEET 421 FOR DRIVEWAY SCH. ALL IL59 DRIVEWAYS SHALL BE HMA BEYOND R.O.W. LIMITS EXCEPT AS NOTED.

REVISIONS	
NAME	DATE

ILLINOIS DEPARTMENT OF TRANSPORTATION  
 FAI 55 AT FAP 338 ILLINOIS ROUTE 59  
 SECTION: (26, 26HB-1&114) R-2

**EXISTING AND PROPOSED  
 IL 59 ROADWAY PLAN  
 STA. 7499+00 TO STA 7514+00**

SCALE: 1" = 50'  
 DATE: 03/14/08  
 DRAWN BY: JB  
 CHECKED BY: ACL

**TENG**

TENG & ASSOCIATES, INC.  
 ENGINEERS/ARCHITECTS/PLANNERS  
 200 N. MICHIGAN AVE. CHICAGO, IL 60601  
 TEL: 312.587.8800