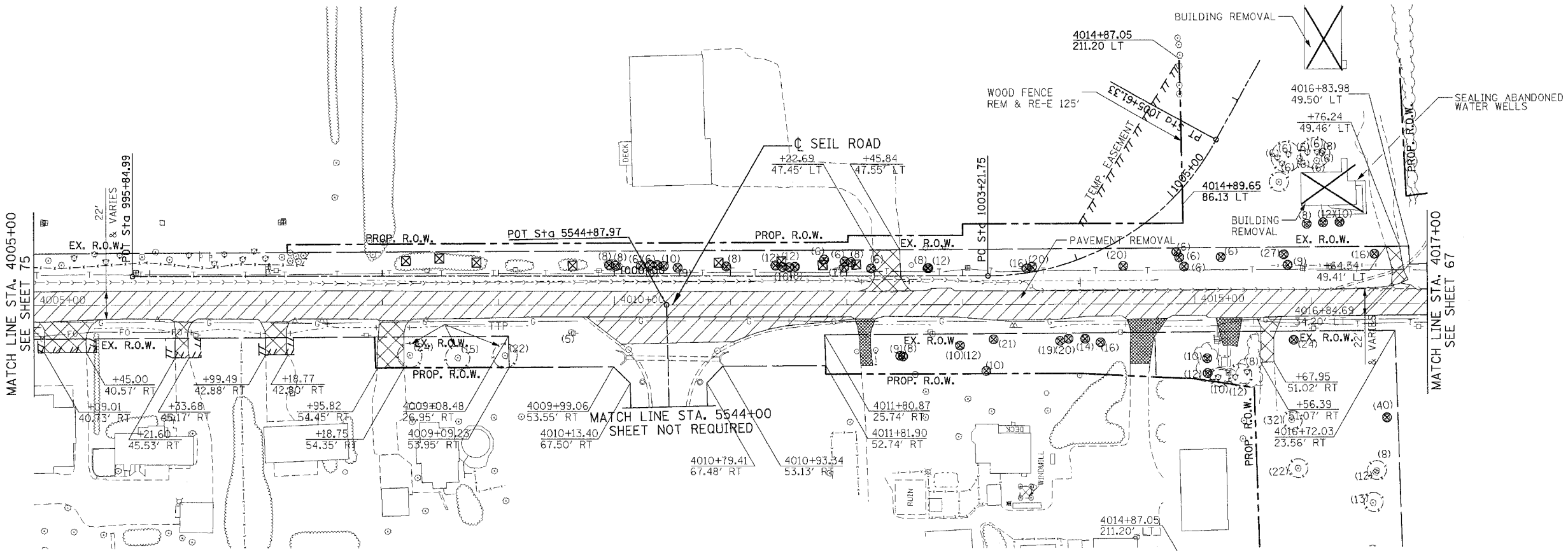
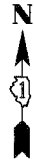
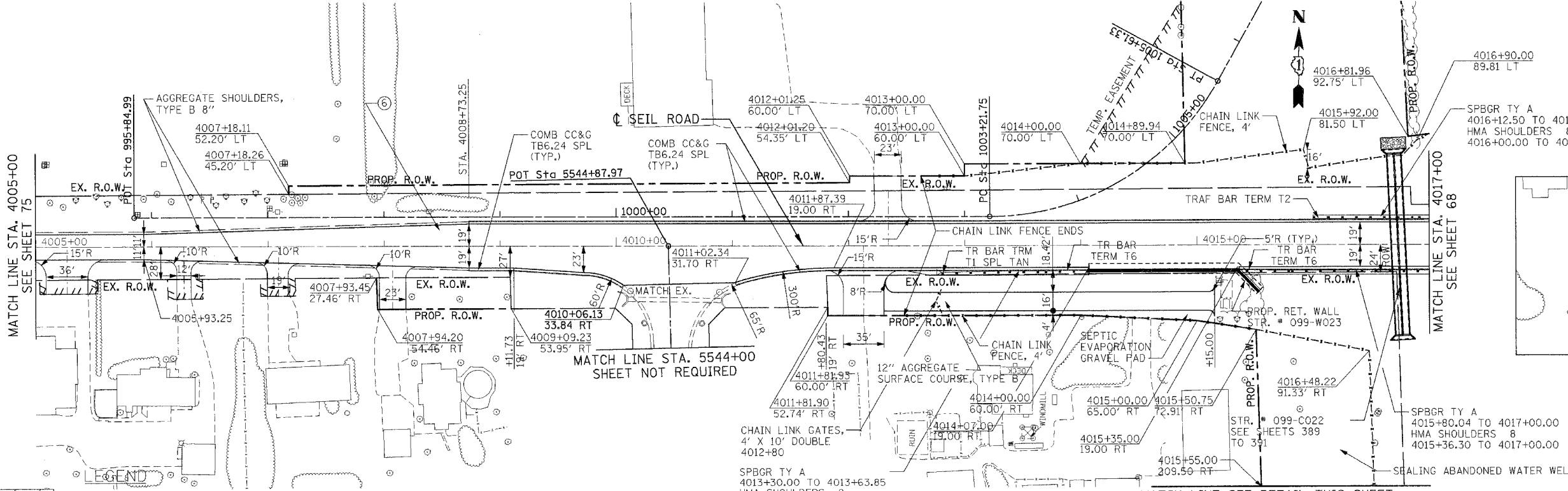


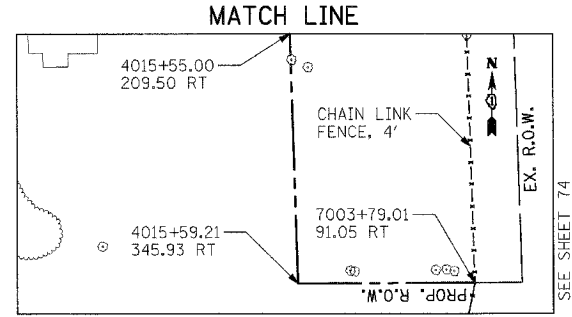
F.A.I. RTE.	SECTION	COUNTY	TOTAL SHEETS	SHEET NO.
55		WILL	608	76
STA. TO STA.		FED. ROAD DIST. NO. 1 ILLINOIS FED. AID PROJECT		
		CONTRACT NO. 60363		



EXISTING



PROPOSED



DETAIL

NOTES:
 4. THE ACCESS CONTROL FENCE LOCATIONS ON THIS PLAN SHEET SHALL SUPERSEDE THE LOCATIONS SHOWN ELSEWHERE IN THESE CONTRACT PLANS.

12 OF 12

- LEGEND**
- PAVEMENT REMOVAL
 - PAVED SHOULDER REMOVAL (INCLUDES GORE AREAS)
 - DRIVEWAY PAVEMENT REMOVAL (INCL. PARKING LOTS)
 - AGGREGATE REMOVAL TO BE PAID FOR AS EARTH EXCAVATION
 - HOT-MIX ASPHALT SURFACE REMOVAL, 2" SEE SHEET 422 FOR DETAILS
 - LINEAR REMOVALS
 - TREE REMOVAL (WITH DIAMETER)
 - BUSH/ SHRUB REMOVAL (REMOVAL INCLUDED IN COST OF EARTHWORK)
 - TREE TRUNK PROTECTION (TP)

- ① NB & SB IL59 RAMP
PCC PVT 9 3/4 JOINTD STAB SUBBASE HMA 4 AGG SUBGRADE 12
- ② HMA SHOULDERS 8
AGG SUBGRADE 12
- ③ I-55 AUX LANE WIDENING
HMA PAVT FD 17 AGG SUBGRADE 12
- ④ HMA SHOULDERS 13
AGG SUBGRADE 12
- ⑤ IL ROUTE 59
PCC PVT 9 3/4 JOINTD AGG SUBGRADE 12
- ⑥ SEIL ROAD
HMA PAVT FD 15 3/4 AGG SUBGRADE 12
- ⑦ EAST FRONTAGE ROAD
HMA PAVT FD 9 AGG SUBGRADE 12
- ⑧ PCC DRIVEWAY PAVT 8
- ⑨ PCC DRIVEWAY PAVT 6

NOTES:
 1. SEE SHEET 216 TO SHEET 220 FOR DRAINAGE SCHEDULE.
 2. COST OF PLANTER REMOVAL SHALL BE INCLUDED IN THE COST OF PAVEMENT REMOVAL.
 3. SEE SHEET 421 FOR DRIVEWAY SCH. ALL IL59 DRIVEWAYS SHALL BE HMA BEYOND R.O.W. LIMITS EXCEPT AS NOTED.

REVISIONS	
NAME	DATE

ILLINOIS DEPARTMENT OF TRANSPORTATION
 FAI 55 AT FAP 338 ILLINOIS ROUTE 59
 SECTION: (26, 26HB-1&114) R-2
**EXISTING AND PROPOSED
 SEIL ROAD ROADWAY PLAN**
 STA. 4005+00 TO STA. 4017+00
 SCALE: 1" = 50'
 DATE: 03/14/08
 DRAWN BY: JB
 CHECKED BY: ACL

TENG
 TENG & ASSOCIATES, INC.
 ENGINEERS/ARCHITECTS/LANDSCAPE ARCHITECTS
 395 N. MICHIGAN AVE. CHICAGO, IL 60601
 TELEPHONE: 312-640-6000