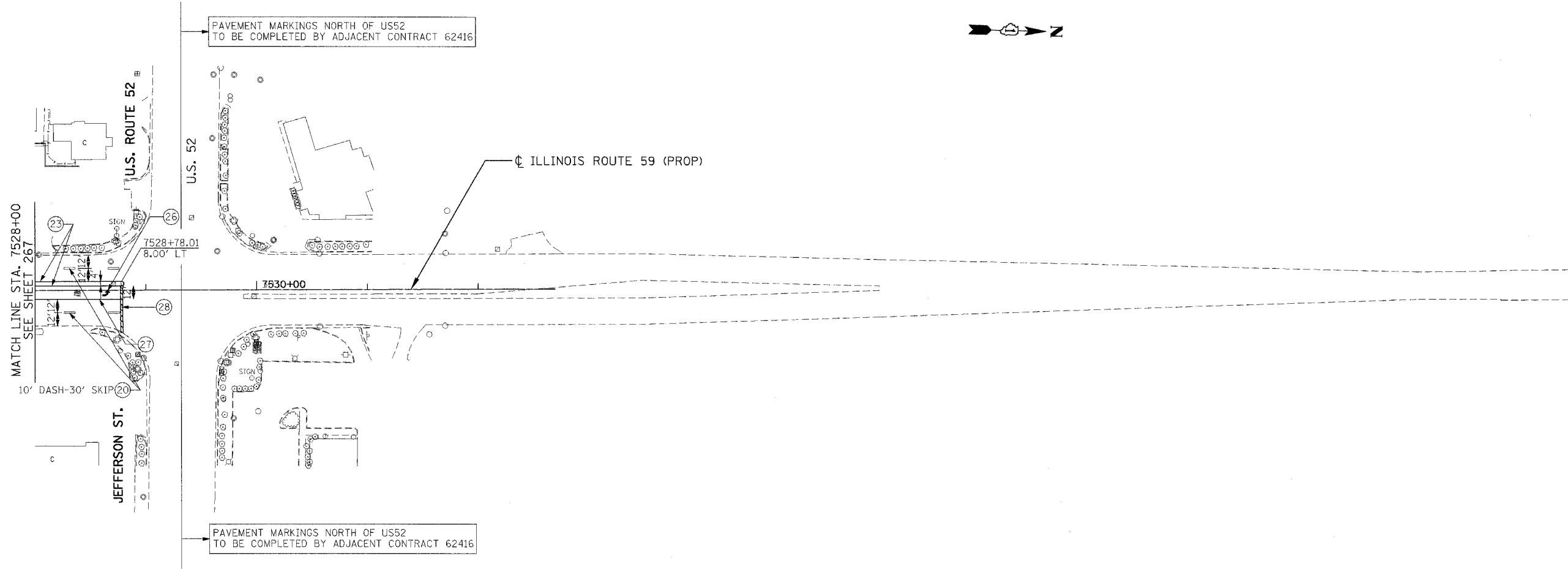


F.A.I. RTE.	SECTION	COUNTY	TOTAL SHEETS	SHEET NO.
55		WILL	608	268
STA.		TO STA.		
FED. ROAD DIST. NO. 1		ILLINOIS	FED. AID PROJECT	
		* (26, 26HB-1&114) R-2 CONTRACT NO. 60363		



\\P0000001.DGN, \\P0000002.DGN, \\P0000003.DGN, \\P0000004.DGN, \\P0000005.DGN, \\P0000006.DGN, \\P0000007.DGN, \\P0000008.DGN, \\P0000009.DGN, \\P0000010.DGN, \\P0000011.DGN, \\P0000012.DGN, \\P0000013.DGN, \\P0000014.DGN, \\P0000015.DGN, \\P0000016.DGN, \\P0000017.DGN, \\P0000018.DGN, \\P0000019.DGN, \\P0000020.DGN, \\P0000021.DGN, \\P0000022.DGN, \\P0000023.DGN, \\P0000024.DGN, \\P0000025.DGN, \\P0000026.DGN, \\P0000027.DGN, \\P0000028.DGN, \\P0000029.DGN, \\P0000030.DGN, \\P0000031.DGN, \\P0000032.DGN, \\P0000033.DGN, \\P0000034.DGN, \\P0000035.DGN, \\P0000036.DGN, \\P0000037.DGN, \\P0000038.DGN, \\P0000039.DGN, \\P0000040.DGN, \\P0000041.DGN, \\P0000042.DGN, \\P0000043.DGN, \\P0000044.DGN, \\P0000045.DGN, \\P0000046.DGN, \\P0000047.DGN, \\P0000048.DGN, \\P0000049.DGN, \\P0000050.DGN, \\P0000051.DGN, \\P0000052.DGN, \\P0000053.DGN, \\P0000054.DGN, \\P0000055.DGN, \\P0000056.DGN, \\P0000057.DGN, \\P0000058.DGN, \\P0000059.DGN, \\P0000060.DGN, \\P0000061.DGN, \\P0000062.DGN, \\P0000063.DGN, \\P0000064.DGN, \\P0000065.DGN, \\P0000066.DGN, \\P0000067.DGN, \\P0000068.DGN, \\P0000069.DGN, \\P0000070.DGN, \\P0000071.DGN, \\P0000072.DGN, \\P0000073.DGN, \\P0000074.DGN, \\P0000075.DGN, \\P0000076.DGN, \\P0000077.DGN, \\P0000078.DGN, \\P0000079.DGN, \\P0000080.DGN, \\P0000081.DGN, \\P0000082.DGN, \\P0000083.DGN, \\P0000084.DGN, \\P0000085.DGN, \\P0000086.DGN, \\P0000087.DGN, \\P0000088.DGN, \\P0000089.DGN, \\P0000090.DGN, \\P0000091.DGN, \\P0000092.DGN, \\P0000093.DGN, \\P0000094.DGN, \\P0000095.DGN, \\P0000096.DGN, \\P0000097.DGN, \\P0000098.DGN, \\P0000099.DGN, \\P0000100.DGN

PAVEMENT MARKING LEGEND

- | | | |
|--|--|--|
| ⑩ PREFORMED PLASTIC PAVEMENT MARKING, TYPE B- LINE 4" (WHITE) | ⑬ POLYUREA PAVEMENT MARKING - LINE 4" (WHITE) | ⑲ THERMOPLASTIC PAVEMENT MARKING- LINE 4" (YELLOW) |
| ⑪ PREFORMED PLASTIC PAVEMENT MARKING, TYPE B- LINE 5" (WHITE) | ⑭ POLYUREA PAVEMENT MARKING - LINE 4" (YELLOW) | ⑳ THERMOPLASTIC PAVEMENT MARKING- LINE 4" (WHITE) |
| ⑫ PREFORMED PLASTIC PAVEMENT MARKING, TYPE B- LINE 4" (YELLOW) | ⑮ POLYUREA PAVEMENT MARKING - LINE 12" (YELLOW) | ㉑ THERMOPLASTIC PAVEMENT MARKING- LINE 6" (WHITE) |
| ⑬ POLYUREA PAVEMENT MARKING - LINE 4" (WHITE) | ⑯ THERMOPLASTIC PAVEMENT MARKING- LINE 8" (WHITE) | ㉒ THERMOPLASTIC PAVEMENT MARKING- LINE 24" (WHITE) |
| ⑭ POLYUREA PAVEMENT MARKING - LINE 6" (WHITE) | ⑰ THERMOPLASTIC PAVEMENT MARKING- LINE 12" (WHITE) | |
| ⑮ POLYUREA PAVEMENT MARKING - LINE 24" (WHITE) | | |

◁ RAISED REFLECTIVE PAVEMENT MARKER ONE WAY CRYSTAL

- NOTES:**
1. RAISED REFLECTIVE PAVEMENT MARKERS TO BE PLACED PER DISTRICT 1 STD. TC-11.
 2. EXIT ONLY PAVEMENT MARKINGS TO BE PLACED PER DISTRICT 1 STD. TC-12

LANDSCAPING LEGEND

- (X) TREE TRUNK PROTECTION (TTP)
- SEEDING CLASS 2A *
- SEEDING CLASS 4 **
- SODDING, SALT TOLERANT ***
- SEEDING CLASS 4 & 5A **

- * TOPSOIL FURNISH AND PLACE, 4" NITROGEN, PHOSPHOROUS AND POTASSIUM FERTILIZER NUTRIENTS (90 LBS/ACRE EACH)
- ** COMPOST FURNISH AND PLACE, 4"
- *** TOPSOIL FURNISH AND PLACE, 4" NITROGEN, PHOSPHOROUS AND POTASSIUM FERTILIZER NUTRIENTS (60 LBS/ACRE EACH)

REVISIONS	
NAME	DATE

ILLINOIS DEPARTMENT OF TRANSPORTATION
 FAI 55 AT FAP 338 ILLINOIS ROUTE 59
 SECTION: (26, 26HB-1&114) R-2
IL 59 PAVEMENT MARKING AND LANDSCAPING PLANS
 STA. 7528+00 TO (LIMIT)
 SCALE: 1" = 50'
 DATE: 03/14/08
 DRAWN BY: JB
 CHECKED BY: ACL
TENG
TENG & ASSOCIATES, INC.
 ENGINEERS/ARCHITECTS/PLANNERS
 200 N. MICHIGAN AVE. CHICAGO, IL 60601
 TEL: (312) 280-9000