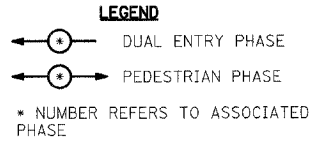
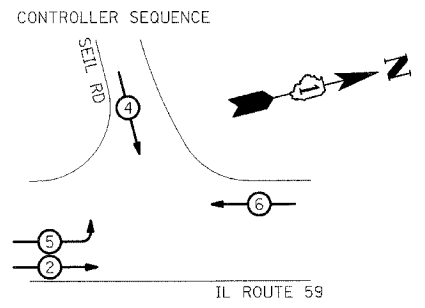


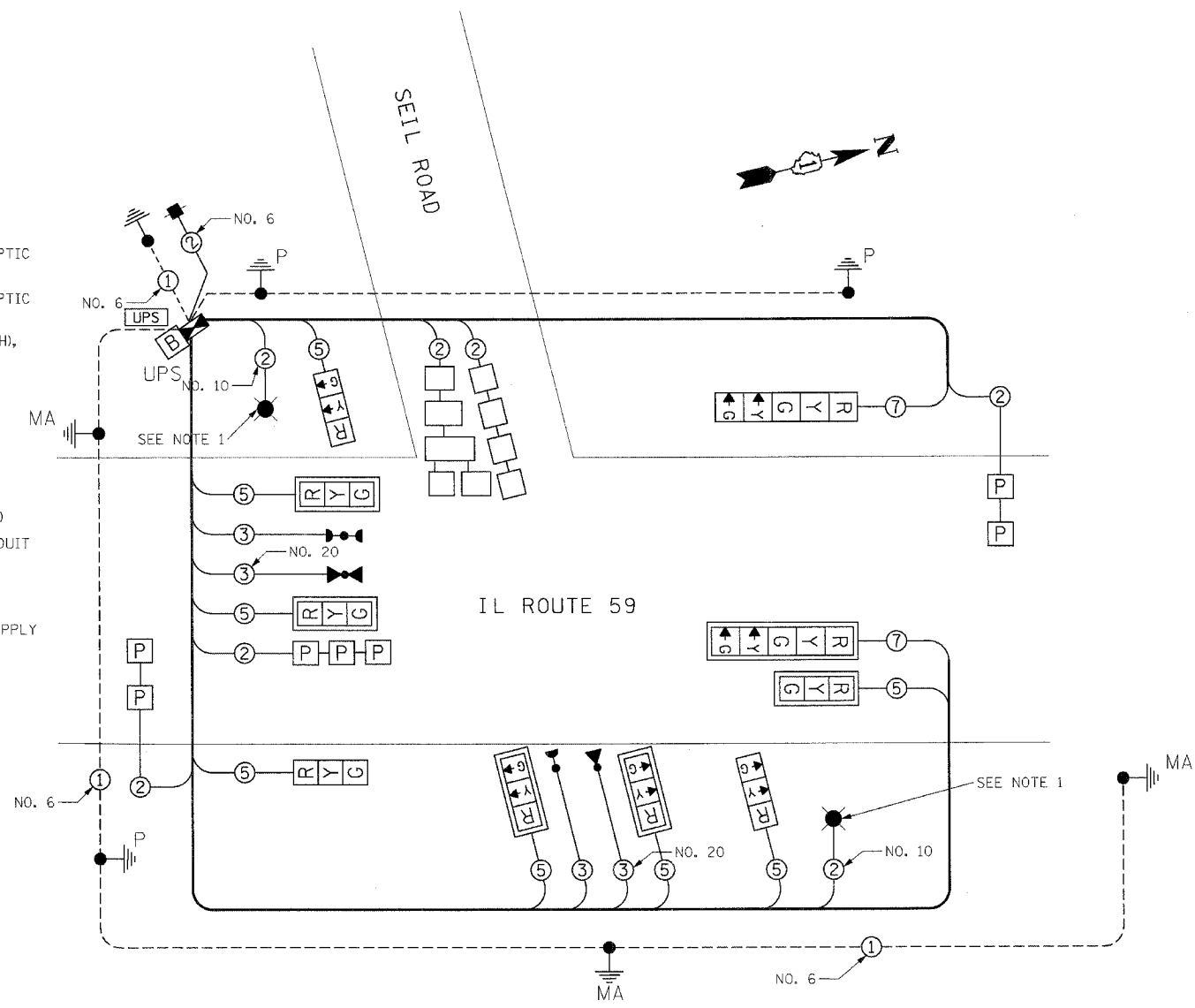
F.A.T. RTE.	SECTION	COUNTY	TOTAL SHEETS	SHEET NO.
55		WILL	608	319
STA.		TO STA.		
FED. ROAD DIST. NO. 1		ILLINOIS	FED. AID PROJECT	
* (26, 26HB-1&114) R-2		CONTRACT NO. 60363		

### CABLE PLAN LEGEND

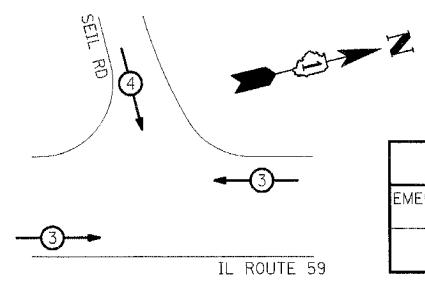
EXISTING	PROPOSED	EXISTING	PROPOSED	DESCRIPTION
				SIGNAL FACE WITH BACKPLATE, "P" INDICATES PROGRAMMED HEAD
				TRAFFIC SIGNAL SECTION
				12" (300mm) PEDESTRIAN SIGNAL SECTION
				RAILROAD CONTROL CABINET
				CONTROLLER CABINET
				SERVICE INSTALLATION
				TELEPHONE CONNECTION
				MAGNETIC DETECTOR
				EMERGENCY VEHICLE LIGHT DETECTOR
				CONFIRMATION BEACON
				PUSHBUTTON DETECTOR
				VEHICLE DETECTOR, INDUCTION LOOP
				VIDEO VEHICLE DETECTOR
				PERFORMED DETECTOR LOOP
				BATTERY BACKUP SYSTEM
				GROUND ROD AT HANDHOLE (H), DOUBLE HANDHOLE (H), OR CONTROLLER (C).
				GROUND ROD AT POST (P), OR MAST ARM POLE (MA).
				GROUND ROD AT ELECTRIC SERVICE INSTALLATION
				GROUND CABLE IN CONDUIT NO. 6 SOLID COPPER (GREEN)
				FIBER OPTIC CABLE IN CONDUIT NO. 62.5/125 MM12F SM12F
				400 W HPS LUMINAIRE
				UNINTERRUPTIBLE POWER SUPPLY



### PHASE DESIGNATION DIAGRAM



CABLE PLAN (NOT TO SCALE)



### EMERGENCY VEHICLE PREEMPTION SEQUENCE

PROPOSED EMERGENCY VEHICLE PREEMPTION		
EMERGENCY VEHICLE PREEMPTOR	3	4
MOVEMENT	←	↓

### SCHEDULE OF QUANTITIES

ITEM	UNITS	QUANTITY
SIGN PANEL - TYPE 1	SQ FT	10.5
CONDUIT IN TRENCH, 2" DIA., GALVANIZED STEEL	FOOT	615
CONDUIT IN TRENCH, 2 1/2" DIA., GALVANIZED STEEL	FOOT	64
CONDUIT IN TRENCH, 4" DIA., GALVANIZED STEEL	FOOT	33
CONDUIT IN TRENCH, 3" DIA., GALVANIZED STEEL	FOOT	129
CONDUIT PUSHED, 4" DIA., GALVANIZED STEEL	FOOT	211
HANDHOLE	EACH	6
HEAVY-DUTY HANDHOLE	EACH	1
DOUBLE HANDHOLE	EACH	1
TRENCH AND BACKFILL FOR ELECTRICAL WORK	FOOT	726
FULL-ACTUATED CONTROLLER AND TYPE IV CABINET	EACH	1
ELECTRIC CABLE IN CONDUIT, SIGNAL NO. 14 3C	FOOT	313
ELECTRIC CABLE IN CONDUIT, SIGNAL NO. 14 5C	FOOT	1354
ELECTRIC CABLE IN CONDUIT, SIGNAL NO. 14 7C	FOOT	406
ELECTRIC CABLE IN CONDUIT, LEAD-IN, NO. 14 1 PAIR	FOOT	1156
ELECTRIC CABLE IN CONDUIT, SERVICE, NO. 6 2 C	FOOT	273
TRAFFIC SIGNAL POST, GALVANIZED STEEL 14 FT.	EACH	2
TRAFFIC SIGNAL POST, GALVANIZED STEEL 16 FT.	EACH	1
STEEL COMBINATION MAST ARM ASSEMBLY AND POLE, 24 FT.	EACH	1
STEEL COMBINATION MAST ARM ASSEMBLY AND POLE, 32 FT.	EACH	1
STEEL MAST ARM ASSEMBLY AND POLE, 34 FT.	EACH	1
CONCRETE FOUNDATION, TYPE A	FOOT	12
CONCRETE FOUNDATION, TYPE E 30-INCH DIAMETER	FOOT	45
CONCRETE FOUNDATION TYPE C	FOOT	4
PERFORMED DETECTOR LOOP	FOOT	210
TRAFFIC SIGNAL BATTERY BACKUP SYSTEM	EACH	1
TRAFFIC SIGNAL BACKPLATE	EACH	6
INDUCTIVE LOOP DETECTOR	EACH	5
DETECTOR LOOP, TYPE I	FOOT	219
* LIGHT DETECTOR	EACH	2
* LIGHT DETECTOR AMPLIFIER	EACH	1
* TEMPORARY TRAFFIC SIGNAL INSTALLATION	EACH	1
* SERVICE INSTALLATION - POLE MOUNTED	EACH	1
* ELECTRIC CABLE IN CONDUIT, GROUNDING, NO. 6 1C	FOOT	786
* ELECTRIC CABLE IN CONDUIT NO. 20 3/C, TWISTED, SHIELDED	FOOT	313
SIGNAL HEAD ,LED, 1-FACE, 3-SECTION, MAST-ARM MOUNTED	EACH	5
SIGNAL HEAD ,LED, 1-FACE, 3-SECTION, BRACKET MOUNTED	EACH	3
SIGNAL HEAD ,LED, 1-FACE, 5-SECTION, BRACKET MOUNTED	EACH	1
SIGNAL HEAD ,LED, 1-FACE, 5-SECTION, MAST-ARM MOUNTED	EACH	1
ELECTRIC CABLE IN CONDUIT, LTG, 2/C NO. 10	FOOT	415
UNINTERRUPTIBLE POWER SUPPLY	EACH	1

\* - 100% COST TO THE VILLAGE OF SHOREWOOD

NOTE 1: FOR LIGHTING PLANS AND CONTROLLER LOCATION, SEE PLANS 320 THRU 346

I.D.O.T. TRAFFIC SIGNAL INSTALLATION ELECTRICAL SERVICE REQUIREMENTS					TOTAL WATTAGE
TYPE	NO. LAMPS	WATTAGE (INCAND.)	WATTAGE (LED)	% OPERATION	
SIGNAL (RED)	10		17	0.50	85.00
(YELLOW)	10		25	0.25	62.50
(GREEN)	10		15	0.25	37.50
ARROW	4		12	0.10	4.80
CONTROLLER	1		100	1.00	100.00
TOTAL =					289.80

ENERGY COSTS TO: ILLINOIS DEPARTMENT OF TRANSPORTATION  
 201 WEST CENTER COURT  
 SCHLAUBURG, ILLINOIS 60196-1096  
 CONTACT: MR. RANDY BALES  
 PHONE: (1) 815-724-5355  
 COMPANY: COM. EDISON

FOUNDATION (DEPTH)	FT. (m)	CABLE SLACK	FT. (m)	VERTICAL	FT. (m)
TYPE A - POST	4 (1.2)	HANDHOLE	6.5 (2.0)	ALL FOUNDATIONS	3.5 (1.0)
D - CONTROLLER	4 (1.2)	DOUBLE HANDHOLE	13 (4.0)	MAST ARM (L) POLE	20'H-2"=
E - M. ARM POLE		SIGNAL POST	2 (0.6)	(6mH-0.6m)=	
24" (600mm)	10 (3.0)	CONTROLLER CAB.	1 (0.5)	BRACKET MOUNTED	13 (4.0)
30" (750mm)	15 (4.6)	FIBER OPTIC	13 (4.0)	PED. PUSHBUTTON	4 (1.2)
		ELECTRIC SERVICE	1 (0.5)	ELECTRIC SERVICE	13.5 (4.1)
		GROUND CABLE	1 (0.5)	SERVICE TO GROUND	13.5 (4.1)
				POST MOUNTED	6 (1.8)

REVISIONS	
NAME	DATE

ILLINOIS DEPARTMENT OF TRANSPORTATION  
 FAI 55 AT FAP 338 ILLINOIS ROUTE 59  
 SECTION: (26, 26HB-1&114) R-2

### CABLE PLAN, PHASE DESIGNATION DIAGRAM & SCHEDULE OF QUANTITIES

SCALE: NONE  
 DATE: 03/14/08  
 DRAWN BY: TMH  
 DESIGNED BY: RKF  
 CHECKED BY: RKF

**TENG**

TENG & ASSOCIATES, INC.  
 ENGINEERING ARCHITECTURE PLANNING  
 302 N. MICHIGAN AVE. CHICAGO, IL 60601  
 TEL: 312.467.1000 FAX: 312.467.1001