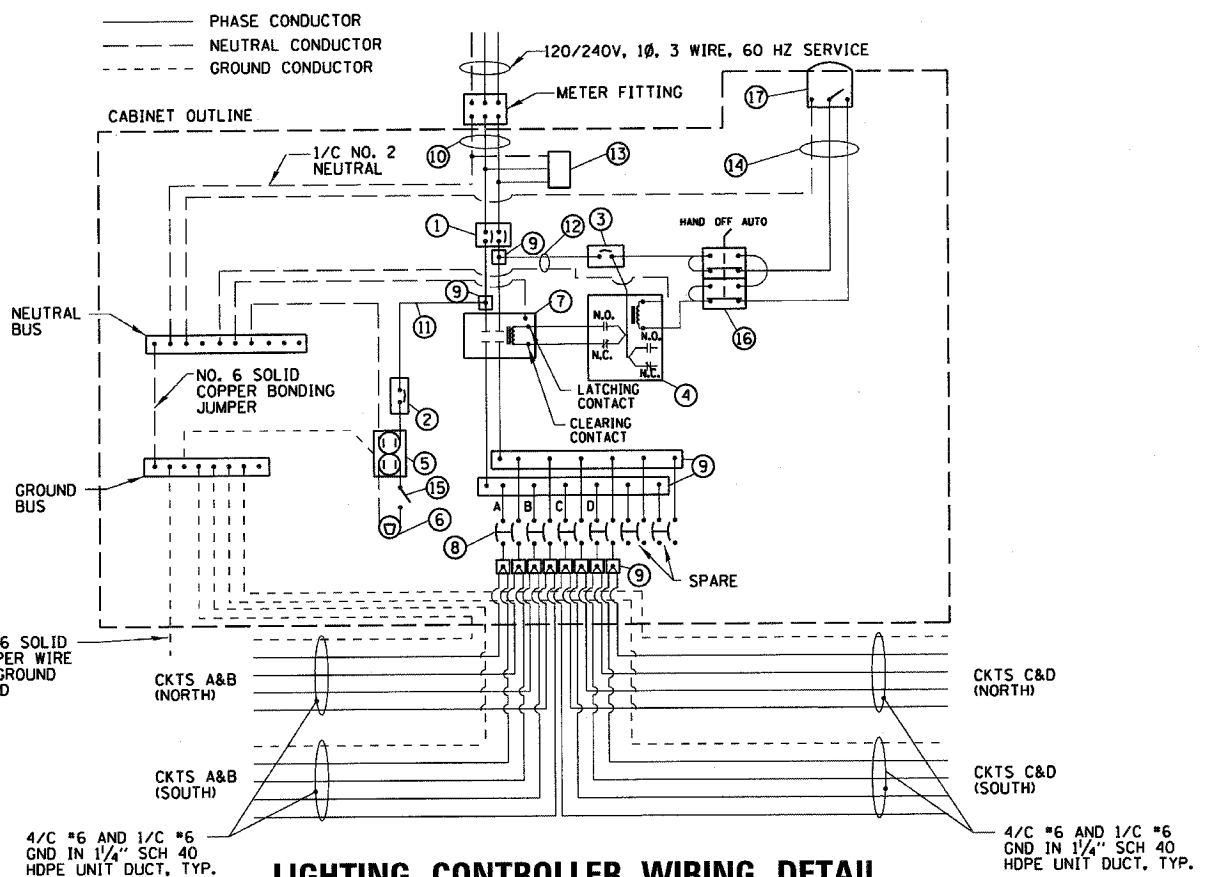


ITEM	SPECIFICATION	MANUFACTURER/MODEL NO. OR EQUAL
1 MAIN CIRCUIT BREAKER	100 AMPERE, 2P, 240V SERVICE RATING, 22KAIC	SIEMENS NO. ED42B100
2 LAMPHOLDER CIRCUIT BREAKER	20 AMPERE, 1P, 120V RATING, 22KAIC	SIEMENS NO. ED41B020
3 PHOTOELECTRIC CONTROL CIRCUIT BREAKER	15 AMPERE, 1P, 120V RATING, 22KAIC	SIEMENS NO. ED41B015
4 AUXILIARY RELAY	120 V OPERATED DPDT 60 HZ COIL 2 NO & 2 NC CONTACTS	MAGNECRAFT NO. 389 FXBXC1 - 120A
5 CABINET RECEPTACLE AND BOX	COMMERCIAL GRADE GFCI 20A/120V, MOUNTED IN A WEATHERPROOF CAST ALUMINUM SINGLE GANG BOX WITH WEATHERPROOF COVER	RECEPTACLE: LEVITON NO. 8899, BOX: APPLETON NO. WSM150 COVER: APPLETON NO. WHG1
6 CABINET LIGHT AND BOX	120V WEATHERPROOF LAMPHOLDER MOUNTED IN A CAST ALUMINUM BOX & EXT. GRADE 100W LAMP	LIGHT & BOX: RAB NO. VX100DG
7 CONTACTOR	100 AMPERE, 2 POLE, 120 V COIL, MECH HELD	SQUARE D NO. 8903 S00 10 V02
8 BRANCH LINE CIRCUIT BREAKERS	6 - 30 AMPERE, 2P, 240V RATING, 22KAIC	SIEMENS NO. ED42B030
9 POWER DISTRIBUTION BLOCK	600 VOLT, INSULATED, SIZE AS REQUIRED	MARATHON
10 SERVICE CABLES	3-600V (XLP-TYPE USE) NO. 2	N/A
11 LAMPHOLDER WIRE	2-600V XLP NO. 12	N/A
12 CONTROL WIRE	2-600V XLP NO. 12	N/A
13 SURGE ARRESTOR	10 K AMPERE RATING	SQUARE D NO. SDSA 1175
14 PHOTOELECTRIC CONTROL WIRE	3-600V XLP NO. 12	N/A
15 DOOR SWITCH	20A/120V, DOOR MOUNTED SNAP ACTION TYPE PLUNGER SWITCH	OMRON NO. A-20G0-K
16 HAND-AUTO-OFF CONTROL SWITCH	20 A, 3 POS. MTD IN CAST ALUM. ENCLOSURE	SQUARE D NO. 9001 KYK 111
17 PHOTOCCELL	120V, MTD. ON CABINET, DELAY TYPE, SPST-NC	FISHER PIERCE NO. FPFA-105

NOTES:

- ALL ITEMS LISTED IN LIGHTING CONTROLLER COMPONENT SCHEDULE SHALL BE CONSIDERED INCIDENTAL TO THE PRICE BID FOR "LIGHTING CONTROLLER" INCLUDING CABINET AND FOUNDATION.
- THE LIGHTING CONTROLLER TOGETHER WITH ALL OF ITS COMPONENTS SHALL BE UL LISTED AS AN "ENCLOSED INDUSTRIAL CONTROL PANEL" UNDER UL508A.
- CONNECTION OF SURGE ARRESTOR TO LINE SIDE OF MAIN CIRCUIT BREAKER SHALL NOT BE "DOUBLE LOGGED."

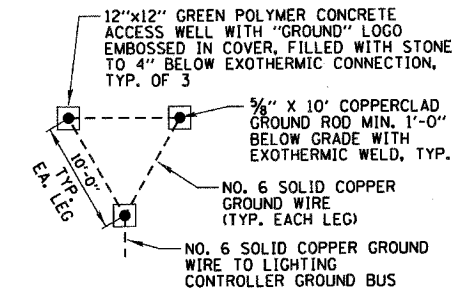
LIGHTING CONTROLLER COMPONENT SCHEDULE



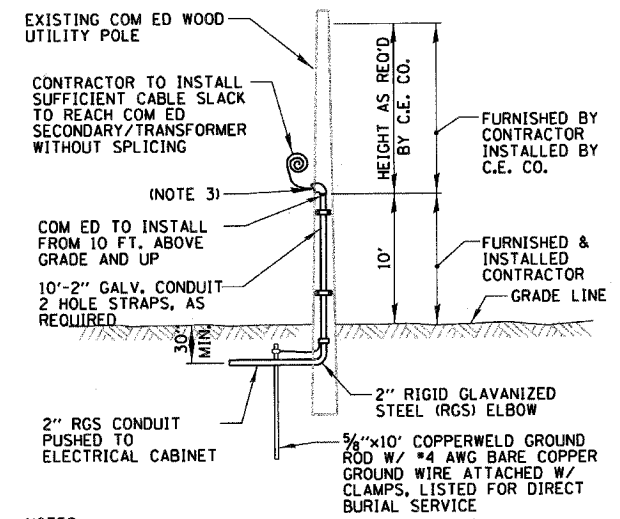
LIGHTING CONTROLLER WIRING DETAIL
N.T.S.

CIRCUIT ID	250W ROADWAY LUMINAIRE		TOTAL CIRCUIT LOAD	
	QTY.	LOAD/FIXT. (WATTS)	(WATTS)	AMPS (240V)
A	12	305 W	3660 W	15.25 A
B	12	305 W	3660 W	15.25 A
C	12	305 W	3660 W	15.25 A
D	12	305 W	3660 W	15.25 A
TOTAL	48	N/A	14640 W	61.0 A

LIGHTING CONTROLLER CIRCUIT LOADS



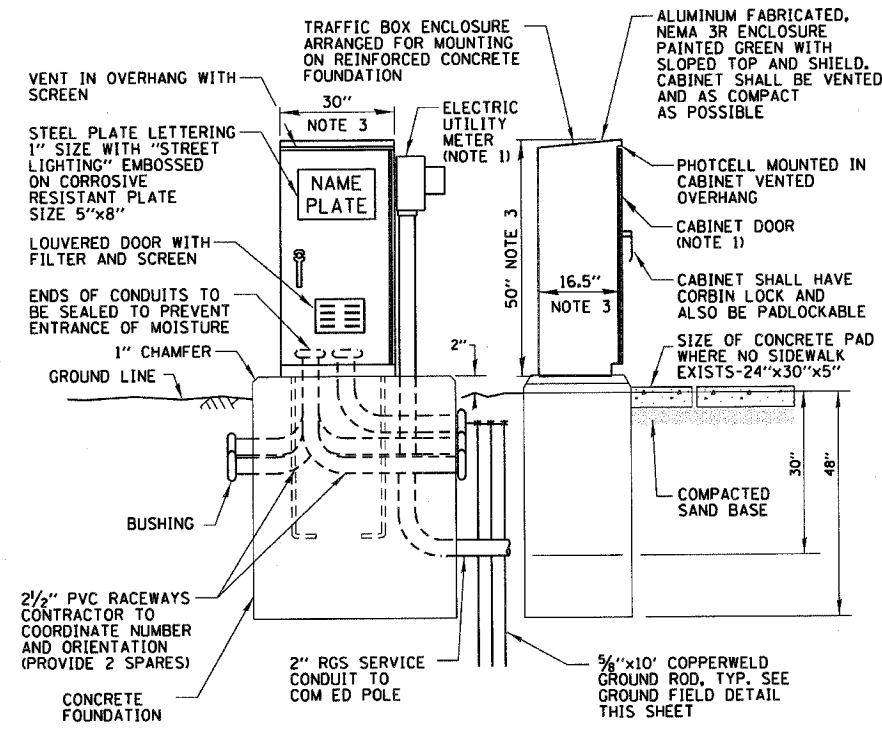
GROUND FIELD DETAIL (TYP.)
N.T.S.



NOTES:

- ALL WORK SHALL CONFORM TO COM ED'S BOOK OF "INFORMATION AND REQUIREMENTS FOR THE SUPPLY OF ELECTRIC SERVICE."
- FURNISHING AND INSTALLING ALL MATERIAL SHOWN ABOVE (EXCEPT FOR POLE) SHALL BE INCLUDED IN THE PRICE BID FOR "ELECTRIC SERVICE INSTALLATION". THE HORIZONTAL SERVICE CONDUIT AND WIRING FROM POLE TO CONTROLLER SHALL BE INCLUDED IN THIS PAY ITEM, AND WILL NOT BE PAID FOR SEPARATELY.
- CONTRACTOR TO PROVIDE A WEATHER HEAD AT TOP OF RISER.

COM ED OVERHEAD CONNECTION POLE
N.T.S.



NOTES:

- SEE LIGHTING PLAN DRAWINGS FOR METER & DOOR ORIENTATION.
- ALL ITEMS SHOWN ABOVE (INCLUDING FOUNDATION & GROUND FIELD) SHALL BE INCLUDED IN THE PRICE BID FOR "LIGHTING CONTROLLER", EXCEPT FOR THE SERVICE CONDUIT WHICH WILL BE PAID FOR UNDER "ELECTRIC SERVICE INSTALLATION."
- CABINET DIMENSIONS SHOWN ARE APPROXIMATE, CABINET SHALL BE AS COMPACT AS POSSIBLE. CONTRACTOR TO COORDINATE.

PROPOSED LIGHTING CONTROLLER CABINET AND FOUNDATION
N.T.S.

REVISIONS	
NAME	DATE

ILLINOIS DEPARTMENT OF TRANSPORTATION
 FAI 55 AT FAP 338 ILLINOIS ROUTE 59
 SECTION: 26HB-1BR AND 114R-1
 VILLAGE OF SHOREWOOD
 PROPOSED IL 59
 LIGHTING DETAILS (1 OF 3)
 STA. 7480+50 TO STA. 7521+00
 SCALE: N.T.S. DRAWN BY: KB
 DATE: 3/14/2008 CHECKED BY: AJD