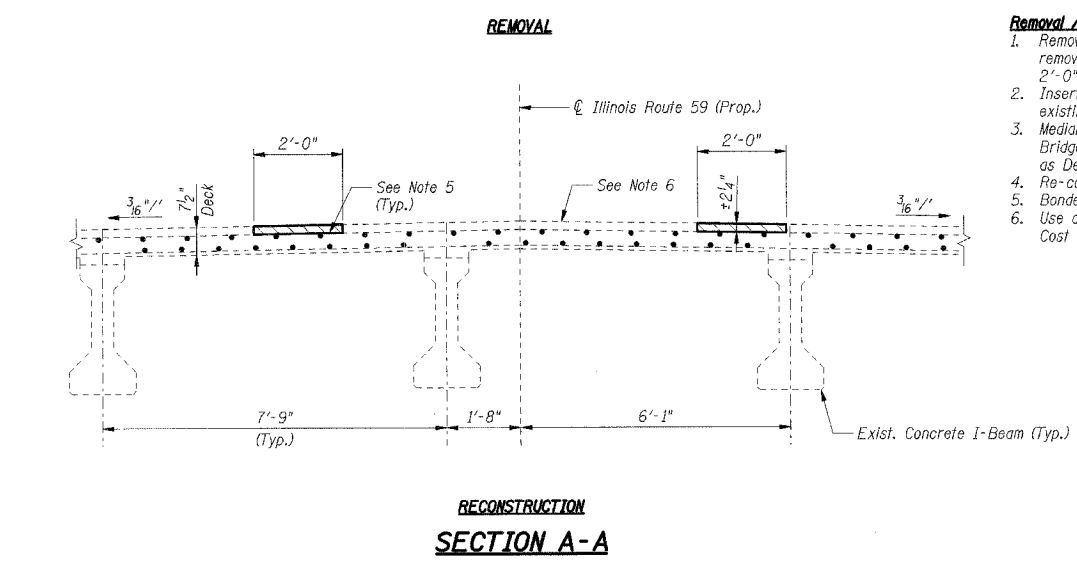
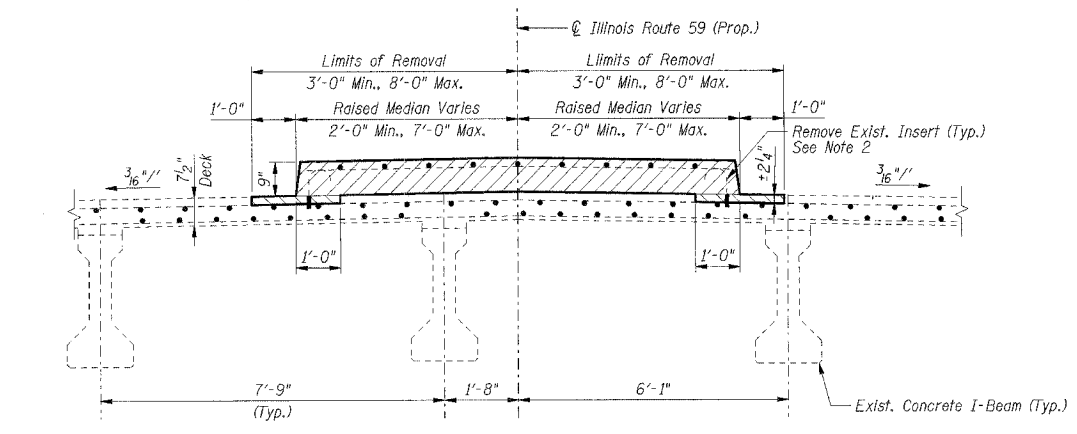
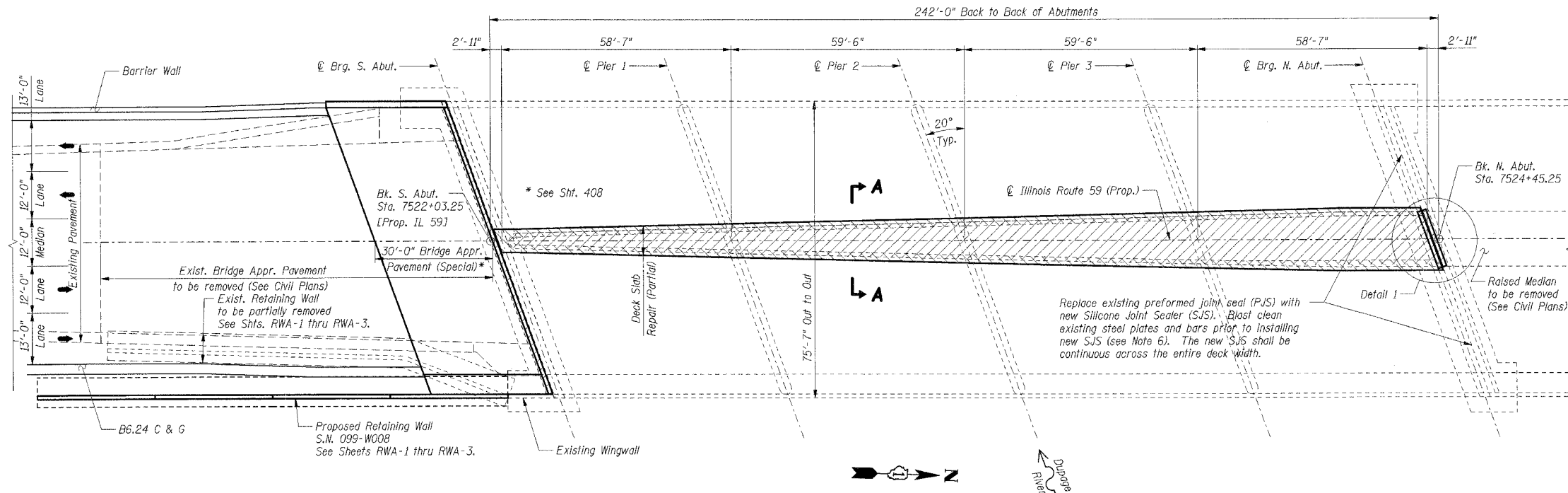


F.A.I. R.T.E.	SECTION	COUNTY	TOTAL SHEETS	SHEET NO.
59	*	WILL.	608	372
STA.	TO STA.			
FED. ROAD DIST. NO. 1		ILLINOIS	FED. AID PROJECT	
* (26, 26HB-1 & 114) R-2 CONTRACT NO. 60363				



PLAN

REMOVAL

RECONSTRUCTION SECTION A-A

Removal / Reconstruction Notes:

1. Remove concrete median to top of bridge deck; remove bridge deck to top of top reinforcement for 2'-0" wide strips along the median edges.
2. Inserts to be removed to at least the top layer of the existing bridge deck reinforcement.
3. Median removal to be paid for as Concrete Removal. Bridge deck removal and replacement to be paid for as Deck Slab Repair (Partial).
4. Re-coat damaged reinforcement bars with epoxy.
5. Bonded joint with epoxy bonding compound.
6. Use diamond grinding to smooth out rough surface. Cost included with Concrete Removal.

BENCHMARKS:
TBM#5 Square cut on the top of retaining wall near DuPage River Bridge on east side of IL 59 and 1/4 - 34' south of south abutment. El. 582.06.

EXISTING STRUCTURE:
S.N. 099-0284. Illinois Route 59 over the DuPage River. Built in 1991. Four Spans, concrete I-Beams superstructure, 242'-0" Long, 75.58' wide. Solid concrete piers and closed abutments on spread footings.

SALVAGE:
None.

STAGING:
Traffic to be maintained utilizing stage construction.

DESIGN SPECIFICATIONS:
2002 AASHTO Standard Specifications for Highway Bridges

DESIGN STRESSES:
Concrete, $f'_c = 3,500$ psi
Reinforcement, $f_y = 60,000$ psi

- GENERAL NOTES:**
1. Reinforcement bars shall conform to the requirements of ASTM A 706 Gr. 60 (IL Modified). See Special Provisions.
 2. Reinforcement bars designated (E) shall be epoxy coated.
 3. Plan dimensions and details relative to existing plans are subject to routine variations. The Contractor shall field verify existing dimensions and details affecting new construction and make necessary approved adjustments prior to construction or ordering of materials. Such variations shall not be cause for additional compensation for a change in scope of the work, however, the Contractor will be paid for the quantity actually furnished based upon the unit price bid for the work.
 4. Existing reinforcement bars extending into the removal area shall be cleaned, straightened and incorporated into the new construction. Any reinforcement bars that are damaged during concrete removal shall be replaced with an approved bar splicer or anchorage system. Cost included with Concrete Removal.
 5. Joint openings shall be adjusted according to Article 520.04 of the Standard Specifications when the deck is poured at an ambient temperature other than 50°F.
 6. Cost of removal of existing preformed joint seals included with Silicone Joint Sealer, 3".

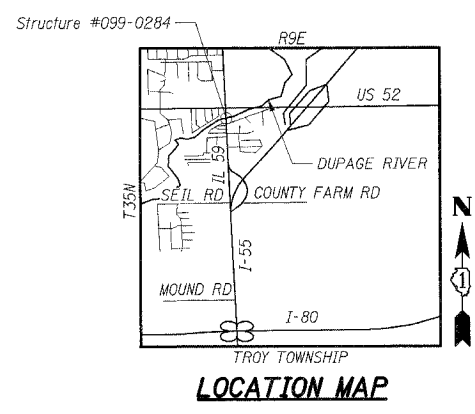
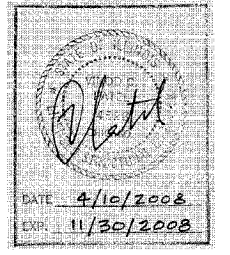
LEGEND

- Concrete Removal
- Deck Slab Repair (Partial)

Notes:
1. Work this sheet with Sheet SB-2.

TOTAL BILL OF MATERIAL

Item	Unit	Total
Concrete Removal	Cu Yd	69.4
Concrete Superstructure	Cu Yd	5.6
Bridge Deck Grooving	Sq Yd	117
Protective Coat	Sq Yd	318
Reinforcement Bars, Epoxy Coated	Lbs	880
Bar Splicers	Each	4
Polymer Concrete	Cu Ft	6.4
Silicone Joint Sealer, 3"	Ft	162
Deck Slab Repair (Partial)	Sq Yd	110



SHT. SB-1 OF SB-2

REVISIONS	
NAME	DATE

ILLINOIS DEPARTMENT OF TRANSPORTATION
F.A.P. ROUTE 338 (ILLINOIS ROUTE 59)
IL ROUTE 59 OVER DUPAGE RIVER
SECTION (26, 26HB-1 & 114) R-2
STRUCTURE NUMBER 099-0284
STATION 7523+24.25, WILL COUNTY

GENERAL PLAN

DATE: 03/14/08

DRAWN BY: CCE
CHECKED BY: TMH

N:\PROJECTS\099-0284\DRAWING\099-0284-114\SB-1.DWG
 DATE: 03/14/08
 DRAWN BY: CCE
 CHECKED BY: TMH