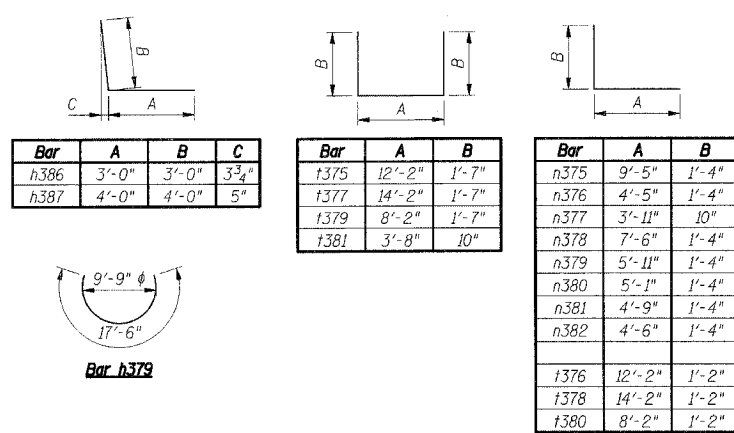
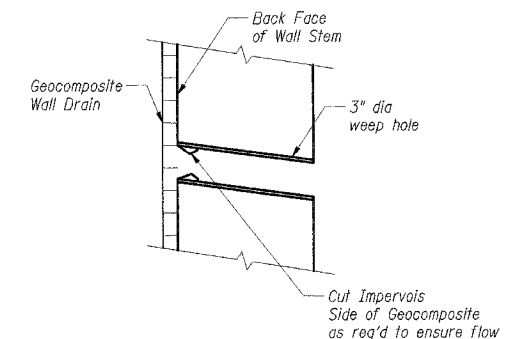


**BAR LIST**

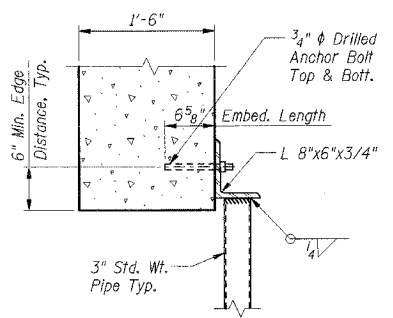
Bar	No.	Size	Length	Shape
h375	22	#5	13'-10"	
h376	2	#5	16'-6"	
h377	3	#5	15'-4"	
h378	2	#5	14'-9"	
h379	4	#5	17'-6"	
h380	14	#8	14'-2"	
h381	8	#5	14'-2"	
h382	5	#8	17'-6"	
h383	3	#5	16'-4"	
h384	1	#8	15'-4"	
h385	1	#5	15'-4"	
h386	28	#5	6'-0"	
h387	14	#8	8'-0"	
h388	8	#6	13'-11"	
n375	5	#8	10'-9"	
n376	16	#8	5'-9"	
n377	46	#5	4'-9"	
n378	2	#8	8'-10"	
n379	2	#8	7'-3"	
n380	2	#8	6'-5"	
n381	2	#8	6'-1"	
n382	2	#8	5'-10"	
t375	7	#9	15'-4"	
t376	7	#7	13'-4"	
t377	8	#9	17'-4"	
t378	8	#7	15'-4"	
t379	8	#9	11'-4"	
t380	8	#7	9'-4"	
t381	26	#5	5'-4"	
v375	8	#6	31'-3"	
v376	8	#5	31'-9"	
v377	15	#5	20'-0"	
v378	1	#5	13'-0"	
w375	14	#5	6'-11"	
w376	7	#5	31'-0"	
w377	6	#5	12'-6"	
w378	8	#9	20'-6"	
w379	5	#7	20'-6"	



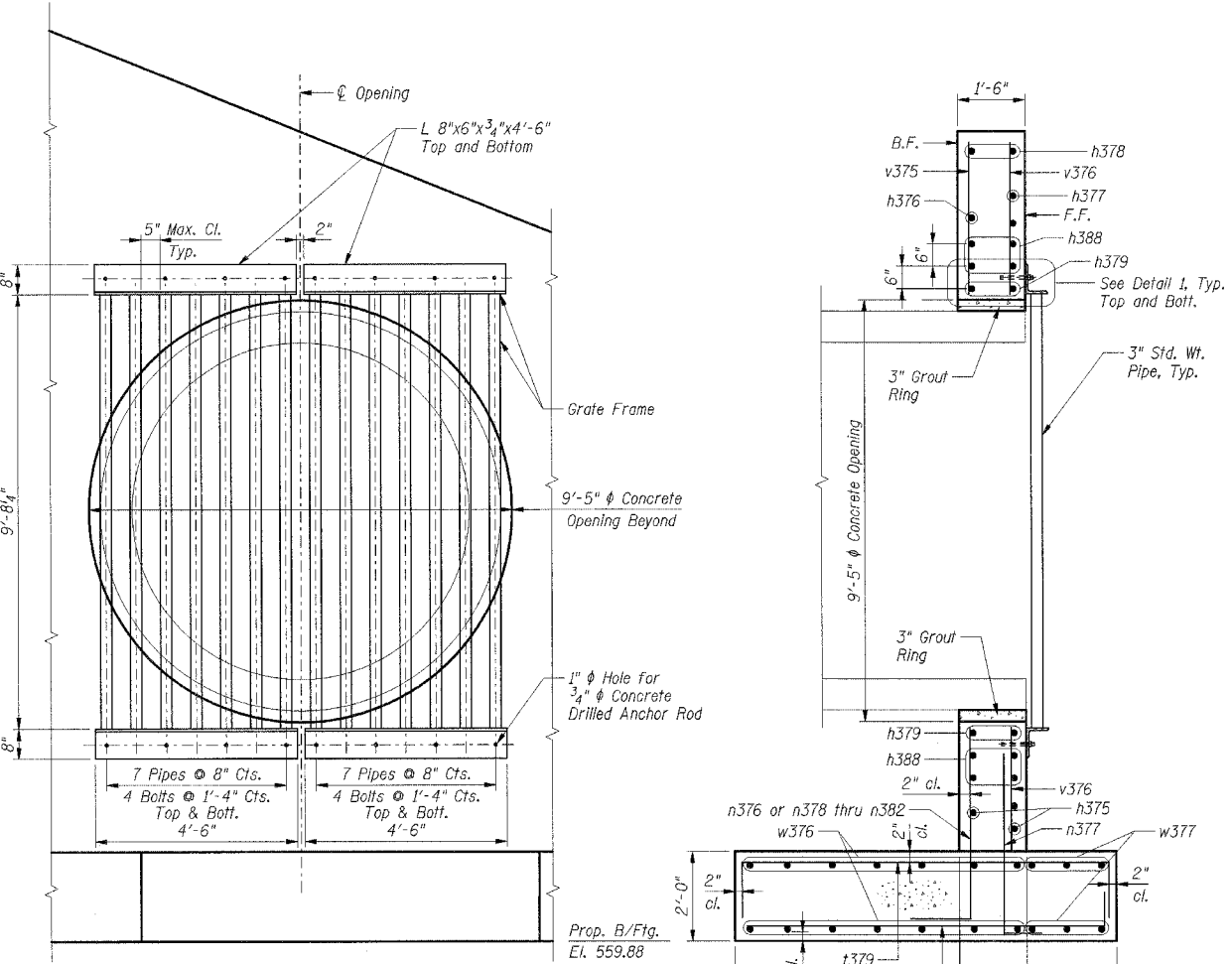
**BAR CUTTING DIAGRAMS**



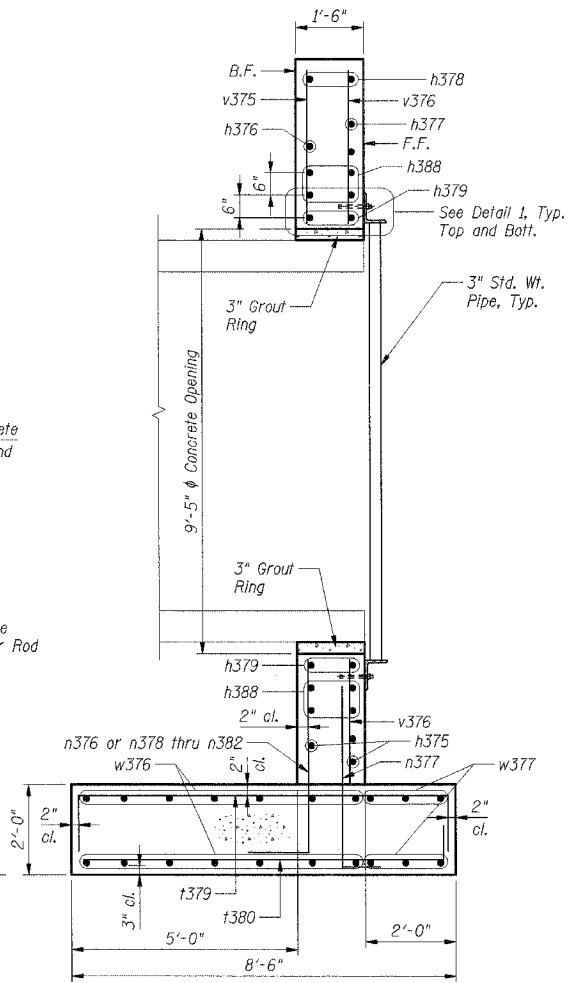
**DRAIN DETAIL**



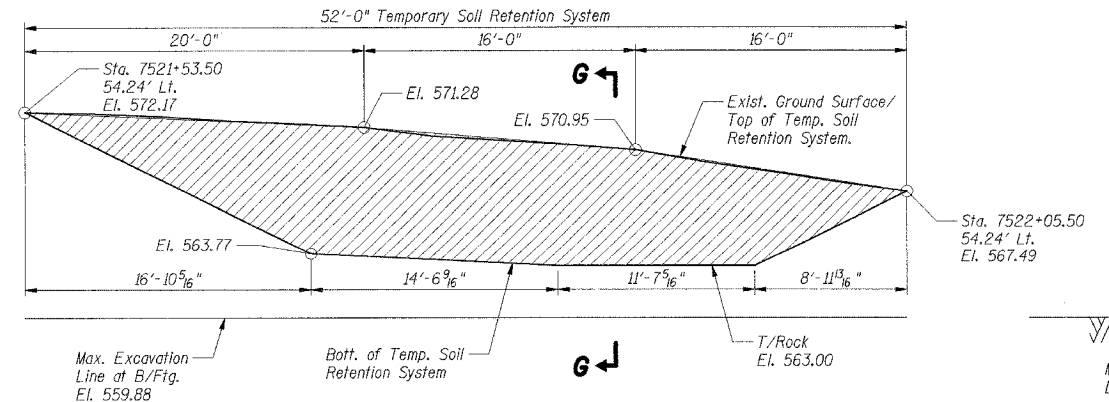
**DETAIL 1**



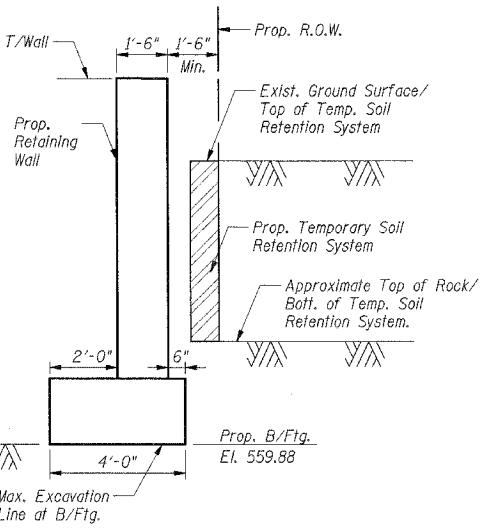
**ELEVATION - GRATE FRAME AT OPENING**



**SECTION D-D**



**ELEVATION - TEMPORARY SOIL RETENTION SYSTEM**



**SECTION G-G**

- Notes:**
- Work this Sheet with Sheets DS-1 and DS-3.
  - F.F. denotes Front Face. B.F. denotes Back Face.
  - Grate Frame:
    - All Structural Steel shall conform to the requirements of AASHTO Designation M-183 and shall be galvanized after fabrication.
    - All welding shall be in accordance with the American Welding Society Standards.
    - All bolts shall conform to the requirements of A.S.T.M. A325, Type I.
    - All work associated with the grate frame shall be included in the cost of Furnishing and Erecting Structural Steel.
  - A cantilevered sheet piling design does not appear feasible and additional members or other retention systems may be necessary. The Contractor shall submit a temporary soil retention system design including plan details and calculations for review and acceptance by the Engineer.

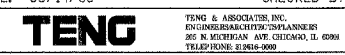
**SHT. DS-4 OF DS-11**

REVISIONS	NAME	DATE

ILLINOIS DEPARTMENT OF TRANSPORTATION  
 FAI 55 AT FAP 338 ILLINOIS ROUTE 59  
 SECTION: (26, 26HB-1 & 114) R-2

**DRAINAGE STRUCTURE 1 DETAILS**

DATE: 03/14/08 DRAWN BY: PA CHECKED BY: BGK



TENG & ASSOCIATES, INC.  
 ENGINEERING ARCHITECTURE INTERIORS  
 303 N. MICHIGAN AVE. CHICAGO, IL 60601  
 TEL: 312.464.4000

\DRODOWN\_JOIN... \DRODOWN\_JOIN... \DRODOWN\_JOIN... \DRODOWN\_JOIN... \DRODOWN\_JOIN... \DRODOWN\_JOIN... \DRODOWN\_JOIN... \DRODOWN\_JOIN... \DRODOWN\_JOIN... \DRODOWN\_JOIN...  
 3-13-2008 12:12:24  
 pen: fabie; n/a