

| | | | | |
|----------------------|--------------|----------------|---------------------------------------|----------------|
| F.A.I. RTE. 90/94 | SECTION * | COUNTY COOK | TOTAL SHEETS 25 +1 <u>26</u> | SHEET NO. 1 |
| 60A00 | | | | |

DESIGN NUMBER
D-91-417-01

STATE OF ILLINOIS
DEPARTMENT OF TRANSPORTATION
DIVISION OF HIGHWAYS

PLANS FOR PROPOSED
FEDERAL AID HIGHWAY

F.A.I. ROUTE 90/94 (DAN RYAN EXPRESSWAY)
SECTION 2324.6-1P-I-5
SOUTHBOUND KNEE WALLS
(33RD ST TO 31ST ST)
COOK COUNTY
C-91-258-05

| | |
|--|------------------------------------|
| | SIGNATURE <i>Jonitt D. Moses</i> |
| | DATE Feb. 7, 2008 |
| | EXPIRES Nov. 30, 2009 |
| | SIGNATURE <i>John D. Conwell</i> |
| | DATE Feb. 7, 2008 |
| | EXPIRES Nov. 30, 2009 |
| | SIGNATURE <i>Brian L. Umbright</i> |
| | DATE Feb. 7, 2008 |
| | EXPIRES Nov. 30, 2008 |

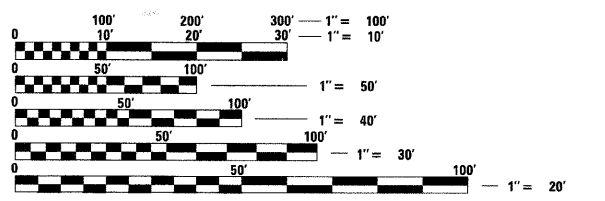


LOCATION OF SECTION INDICATED THUS: — ■ —

PROJECT LOCATED IN CITY OF CHICAGO

DESIGN DESIGNATION
WENTWORTH AVE: 8275 (20) URBAN COLLECTOR

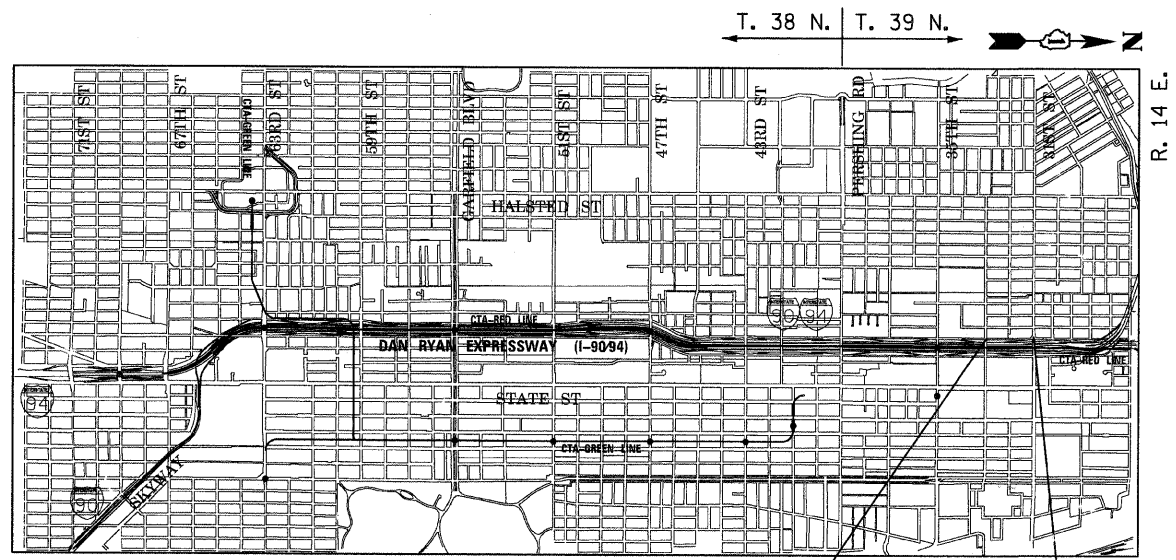
| FRONTAGE ROAD: | ADT (2020) | DESIGN SPEED | POSTED SPEED |
|----------------|------------|--------------|--------------|
| WENTWORTH AVE. | 11,000 | 30 | 25 |



FULL SIZE PLANS HAVE BEEN PREPARED USING STANDARD ENGINEERING SCALES. REDUCED SIZED PLANS WILL NOT CONFORM TO STANDARD SCALES. IN MAKING MEASUREMENTS ON REDUCED PLANS, THE ABOVE SCALES MAY BE USED.

BEFORE EXCAVATING CALL:
CHICAGO UTILITY ALERT NETWORK
(312) 744-7000

CONTRACT NO. 60A00



PROJECT BEGINS
SB WENTWORTH
STA 140 + 14

PROJECT ENDS
SB WENTWORTH
STA 149 + 35

LOCATION MAP

0 1/2 MILE 1 MILE
1" = 1/2 MILE
GROSS LENGTH OF PROJECT = 921 FT (0.174 MILES)
NET LENGTH OF PROJECT = 921 FT (0.174 MILES)

STATE OF ILLINOIS
DEPARTMENT OF TRANSPORTATION
DIVISION OF HIGHWAYS

SUBMITTED FEBRUARY 8, 20 08

Diana M. O'Keefe
DEPUTY DIRECTOR OF HIGHWAYS, REGION ENGINEER
March 21, 20 08

Eric E. Harrel
ENGINEER OF DESIGN AND ENVIRONMENT
March 21, 20 08

Christine M. Reed
DIRECTOR OF HIGHWAYS, CHIEF ENGINEER

PRINTED BY THE AUTHORITY
OF THE STATE OF ILLINOIS

BOWMAN, BARRETT & ASSOCIATES INC.
CONSULTING ENGINEERS
Chicago, Illinois
312.228.0100
www.bbandainc.com

DISTRICT ONE DESIGN-CONSULTANT SERVICES PROJECT MANAGER
RAJENDRA SHAH (847) 705-4555