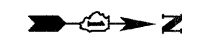
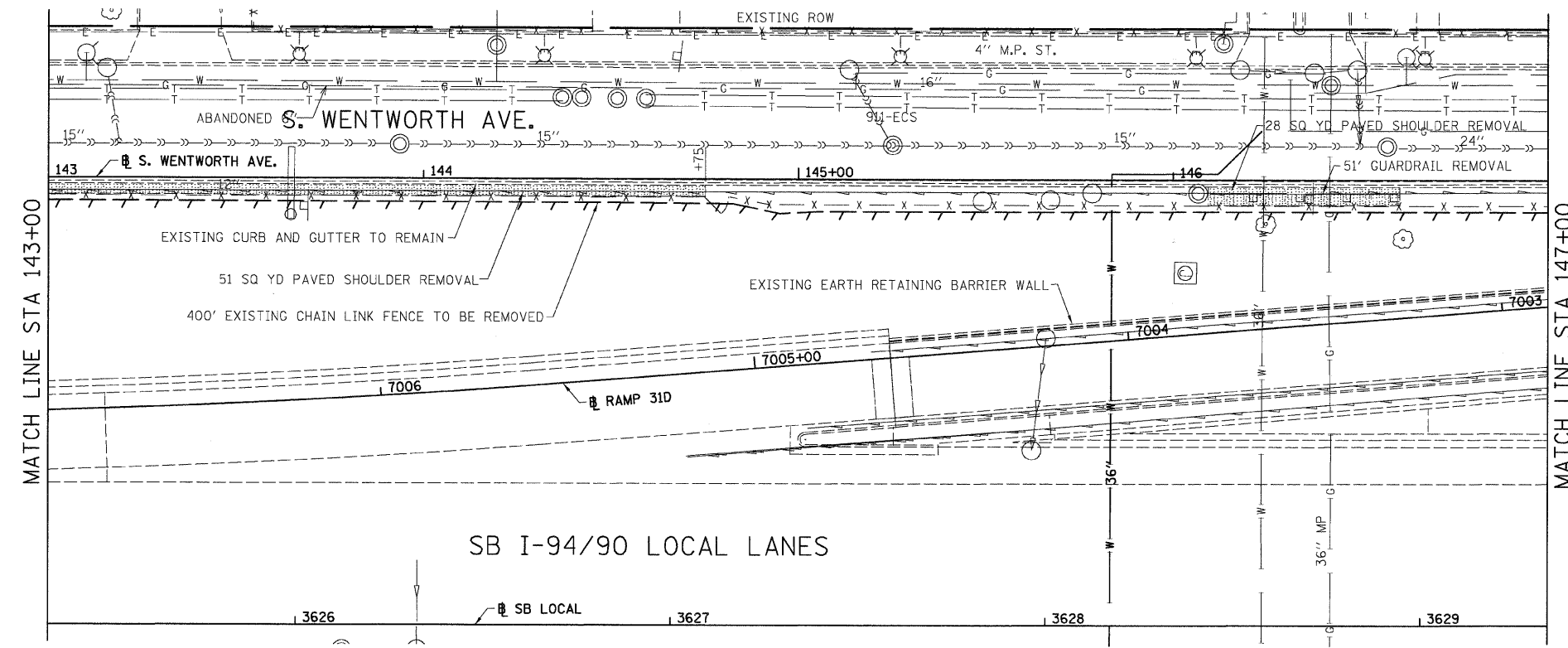

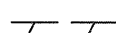
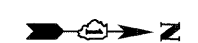
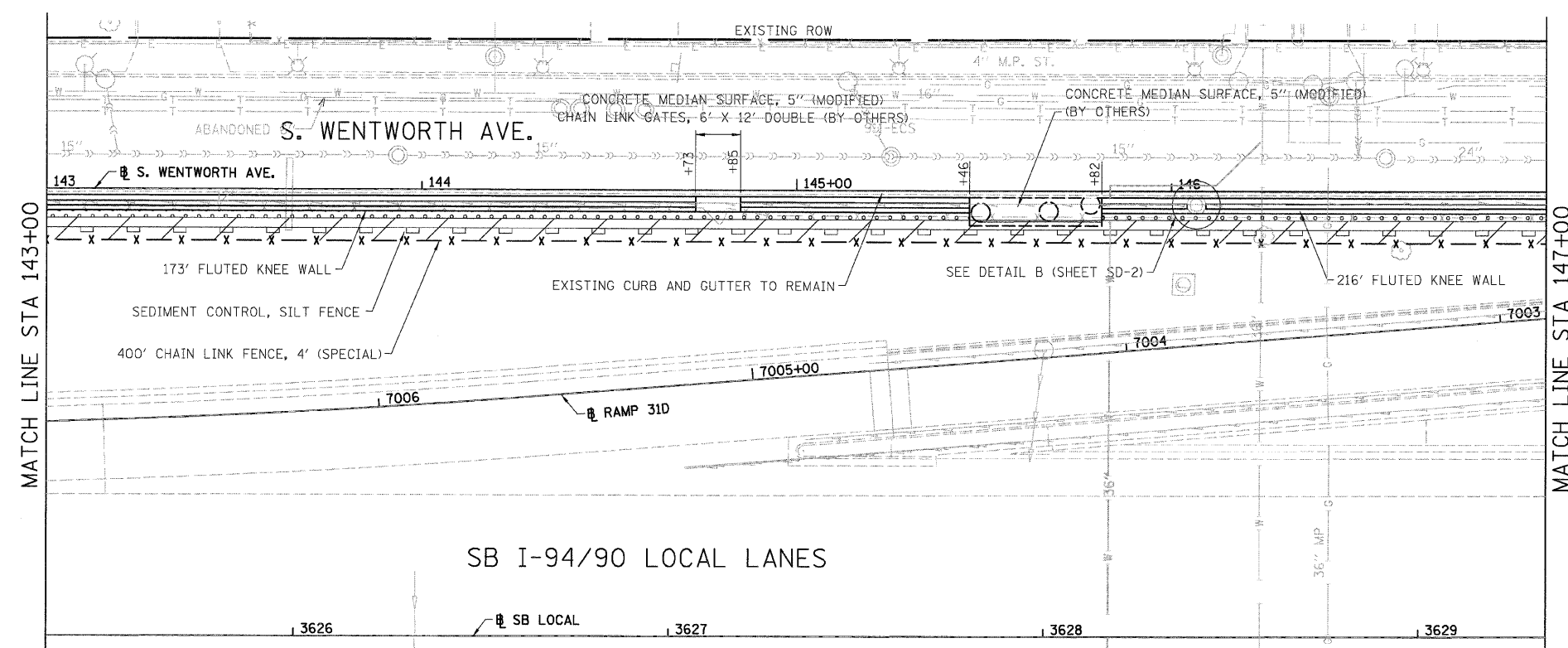
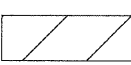



F.A.I.	SECTION	COUNTY	TOTAL SHEETS	SHEET NO.
94/90		COOK	25	11
STA.	TO STA.			
FED. ROAD DIST. NO.	ILLINOIS	FED. AID PROJECT		
60A00		2324.6-1P-1-5		

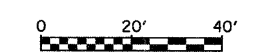


- LEGEND:
-  PAVED SHOULDER REMOVAL
 -  LINEAR REMOVALS



- LEGEND:
-  GROUND PREPARATION FOR SEEDING, CLASS 2A
EROSION CONTROL BLANKET
 -  TOPSOIL FURNISH AND PLACE, 4\"/>

- NOTES:
1. SEE STRUCTURAL DETAIL FOR FLUTED KNEE WALL DETAILS.
 2. ALL POINT CALLOUTS ARE TAKEN AT THE EDGE OF THE KNEE WALL BASE.



REVISIONS	
NAME	DATE

ILLINOIS DEPARTMENT OF TRANSPORTATION
 F.A.I. 94/90 (DAN RYAN EXPRESSWAY)
 SOUTHBOUND KNEE WALLS (33RD ST TO 31ST ST)

**EXISTING AND PROPOSED
 KNEE WALL PLANS**

SCALE: 1"=20'
 DATE: 03/06/08

DRAWN BY: JDC
 CHECKED BY: ODM

BOWMAN, BARRETT & ASSOCIATES INC.
 CONSULTING ENGINEERS
 Chicago, Illinois
 312.228.0100
 www.bbandainc.com

PL-2
3/16/2008 7:42:37 PM