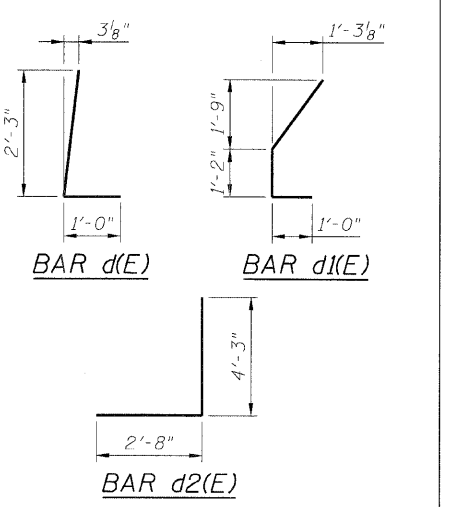
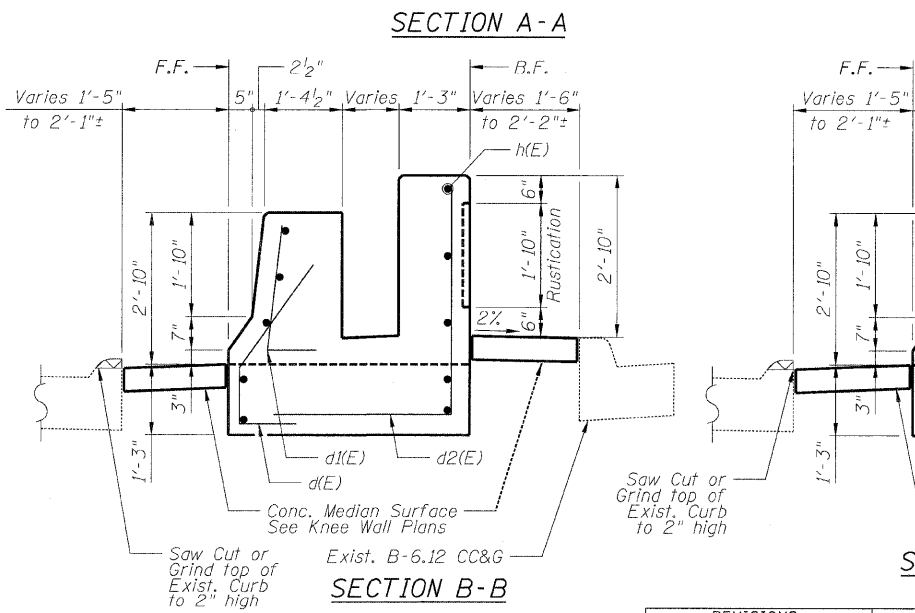
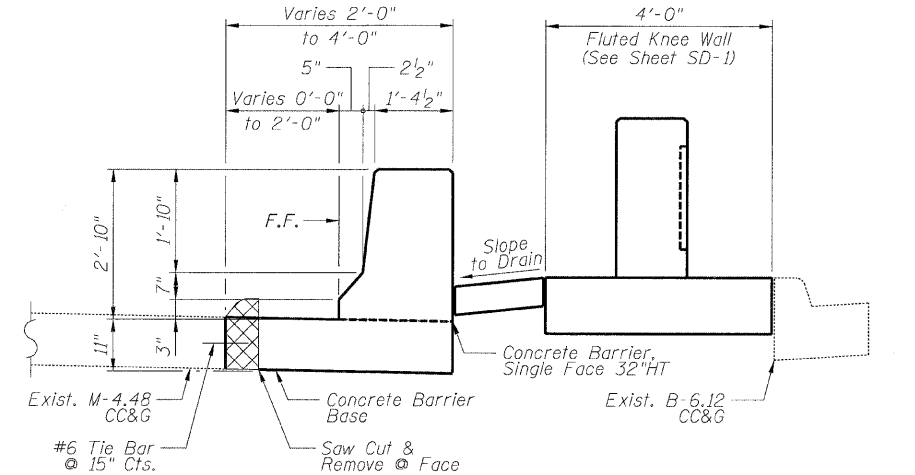
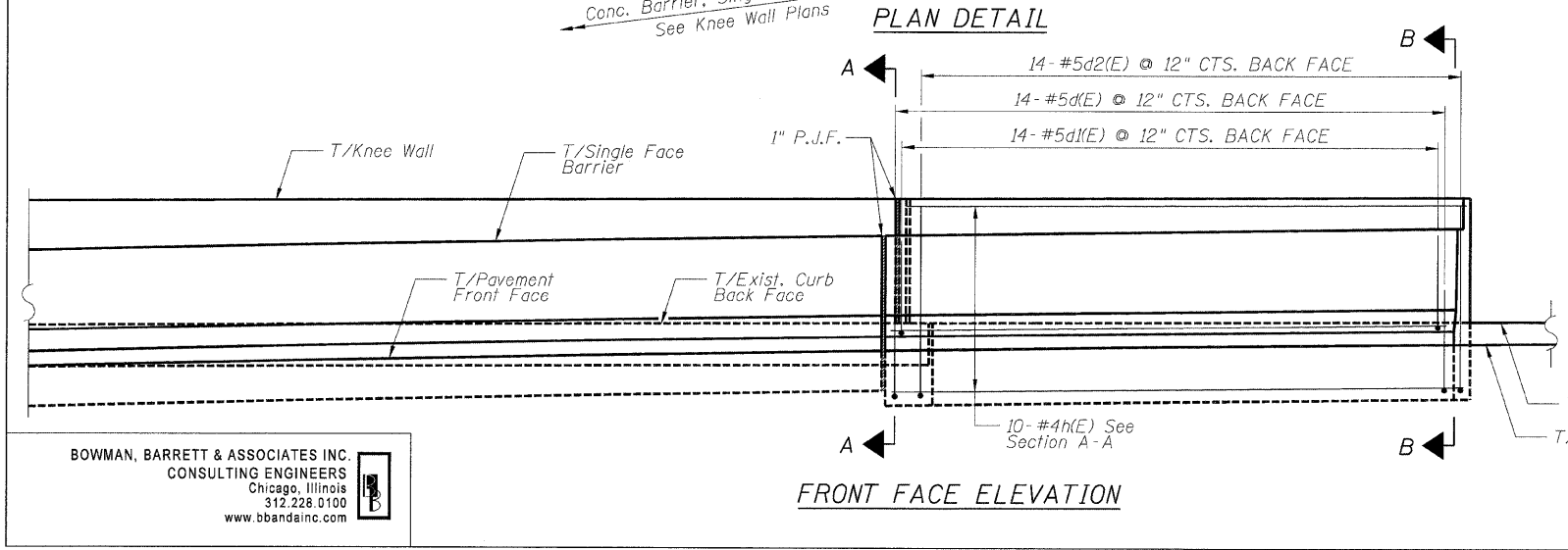
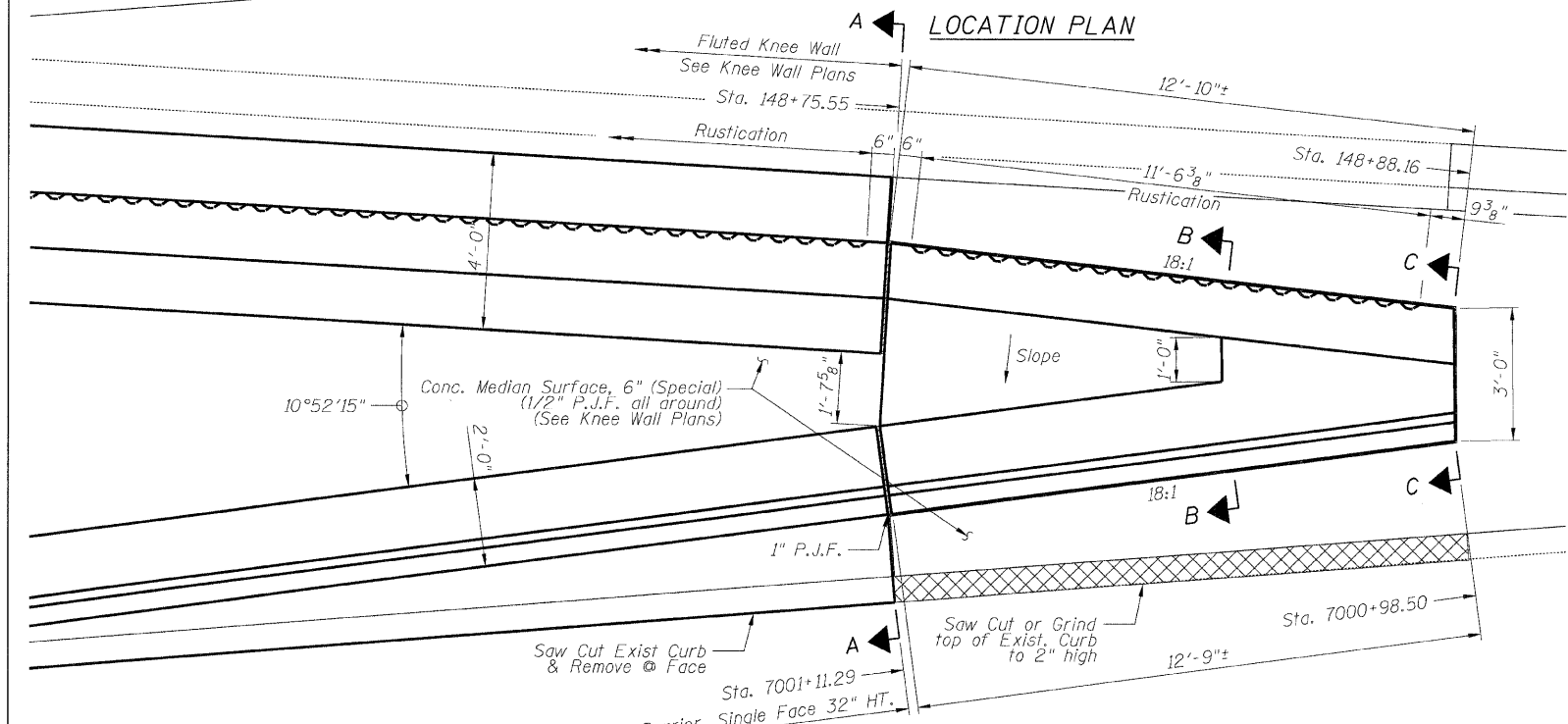
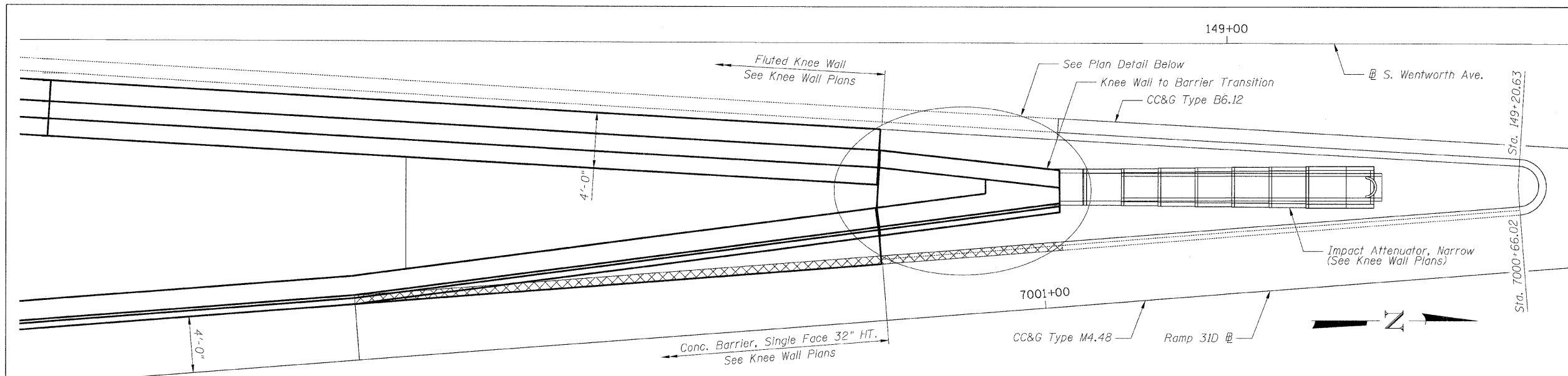


F.A.I.	SECTION	COUNTY	TOTAL SHEETS	SHEET NO.
94/90		COOK	25	15
STA.	TO STA.			
FED. ROAD DIST. NO.	ILLINOIS	FED. AID PROJECT		

60A00
DETAIL B REINFORCEMENT SCHEDULE AND BILL OF MATERIAL

Bar	No.	Size	Length	Shape
d(E)	14	#5	3'-3"	#5
d1(E)	14	#5	4'-3"	#5
d2(E)	14	#5	7'-1"	#5
h(E)	10	#4	12'-5"	#4
Item	Unit	Qty.		
Concrete Superstructures	Cu. Yd.	6.4		
Reinforcement Bars, Epoxy Coated	Pound	1390		
Rustication Finish	Sq. Ft.	22		
Protective Coat	Sq. Yd.	14		



- NOTES:**
- F.F. and B.F. denote Front Face and Back Face of transition, respectively.
 - Knee Wall/Barrier Transition shall be Paid as "Concrete Superstructure", "Reinforcement Bars, Epoxy Coated", "Rustication Finish" and "Protective Coat".

REVISIONS	
NAME	DATE

ILLINOIS DEPARTMENT OF TRANSPORTATION
 F.A.I. 94/90 (DAN RYAN EXPRESSWAY)
 NORTHBOUND KNEE WALLS (35TH ST TO 33RD ST)
DETAIL B
 SCALE: N.T.S. DRAWN BY: PAH
 DATE: 03/06/08 CHECKED BY: BLU

BOWMAN, BARRETT & ASSOCIATES INC.
 CONSULTING ENGINEERS
 Chicago, Illinois
 312.228.0100
 www.bbandainc.com

3/16/2008 1:27:08 PM