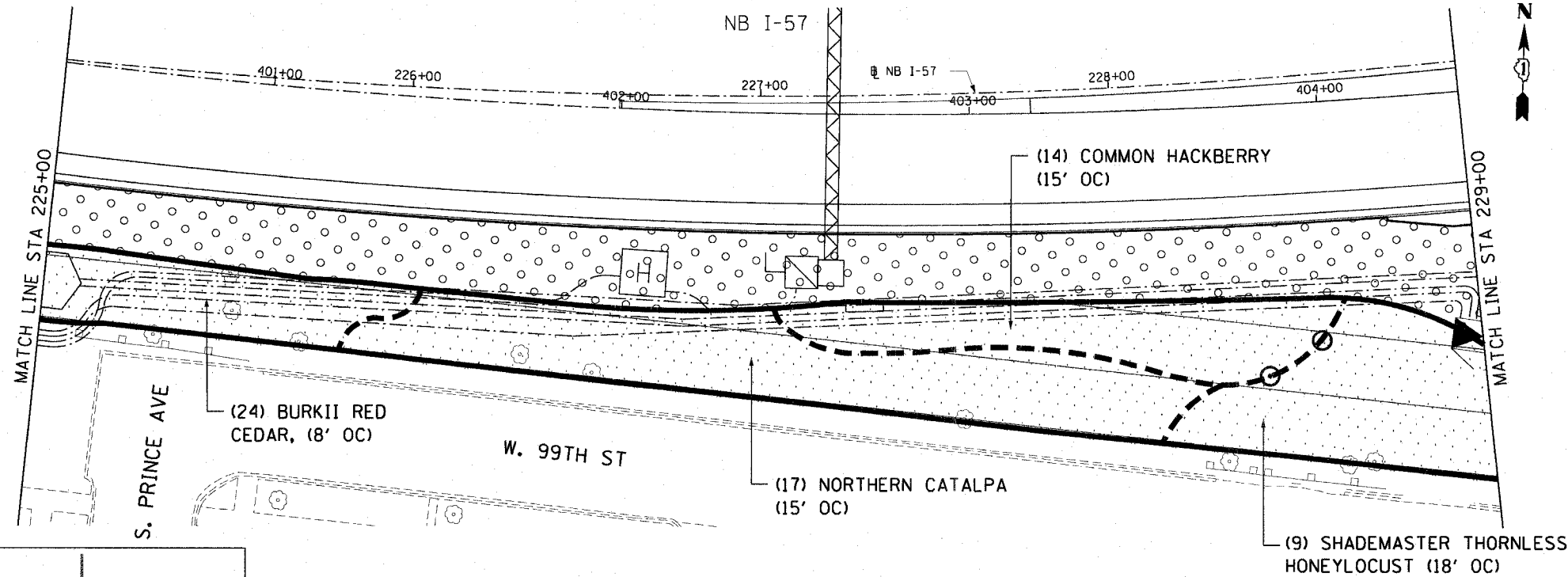
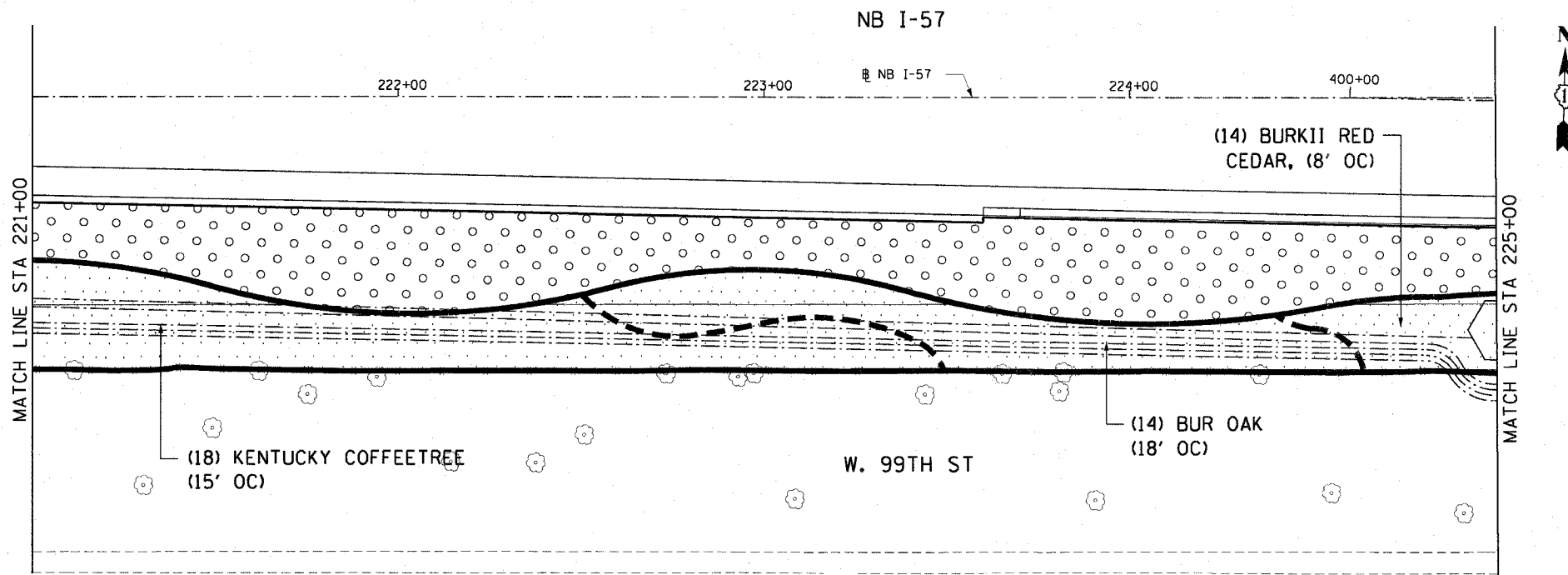


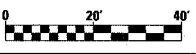
F.A.I. RTE.	SECTION	COUNTY	TOTAL SHEETS	SHEET NO.
90/94	2005-066 LS	COOK	77	13
STA. 000+00	TO STA. 000+00			
FED. ROAD DIST. NO. 1 ILLINOIS FED. AID PROJECT				

60A72



CTE | AECOM

REVISIONS	
NAME	DATE



SHT-4 of 67

ILLINOIS DEPARTMENT OF TRANSPORTATION  
 F.A.I. 90/94 (DAN RYAN EXPRESSWAY)  
 NB ROADSIDE EMBANKMENT LANDSCAPE

PROPOSED IMPROVEMENT  
 1-57 INTERCHANGE TO 31ST STREET

SCALE: 1"=20'  
 DATE: JUNE 2008

DRAWN BY: LAM  
 CHECKED BY: JWM

A:\940468\11\30-roadside embankment\11-220-nv-se22004-15-220.dwg 6:55:06 PM 3/19/2008