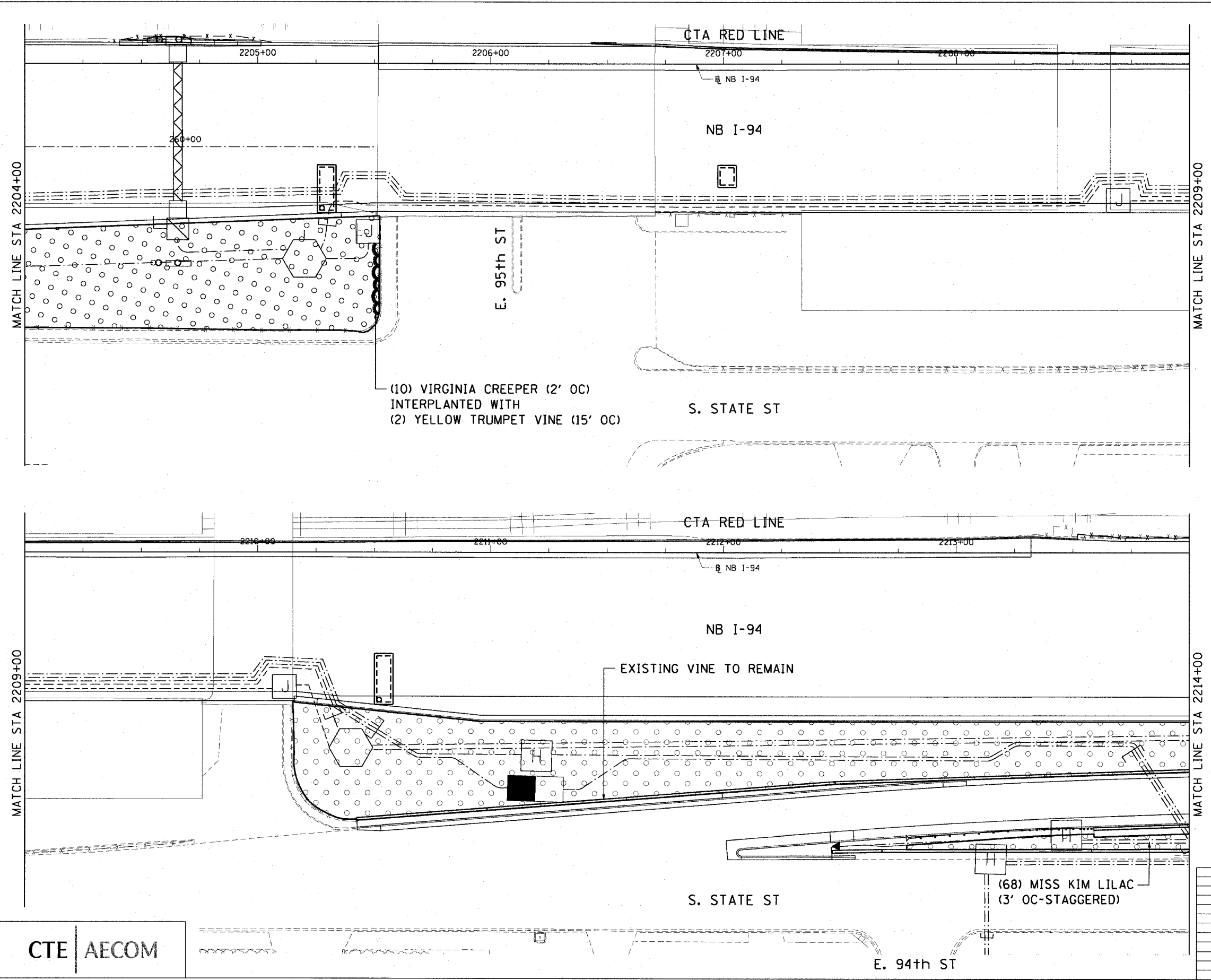


F.A.I. RTE.	SECTION	COUNTY	TOTAL SHEETS	SHEET NO.
90/94	2005-066 LS	COOK	77	32
STA. 2204+00		TO STA. 2214+00		
FED. ROAD DIST. NO. 1 ILLINOIS FED. AID PROJECT				
60A72				

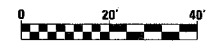


(10) VIRGINIA CREEPER (2' OC)
 INTERPLANTED WITH
 (2) YELLOW TRUMPET VINE (15' OC)

EXISTING VINE TO REMAIN

(68) MISS KIM LILAC
 (3' OC-STAGGERED)

CTE | AECOM



SHT-23 of 67

REVISIONS	
NAME	DATE

ILLINOIS DEPARTMENT OF TRANSPORTATION
 F.A.I. 90/94 (DAN RYAN EXPRESSWAY)
 NB ROADSIDE EMBANKMENT LANDSCAPE

PROPOSED IMPROVEMENT
 I-57 INTERCHANGE TO 31ST STREET

SCALE: 1"=20'
 DATE: JUNE 2008

DRAWN BY: LAM
 CHECKED BY: JWM

A:\p04683\1\10\roadside_embankment\11\220_rdv_082602\220.rvt
 6/19/2008 6:56:00 PM