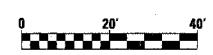
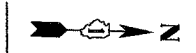
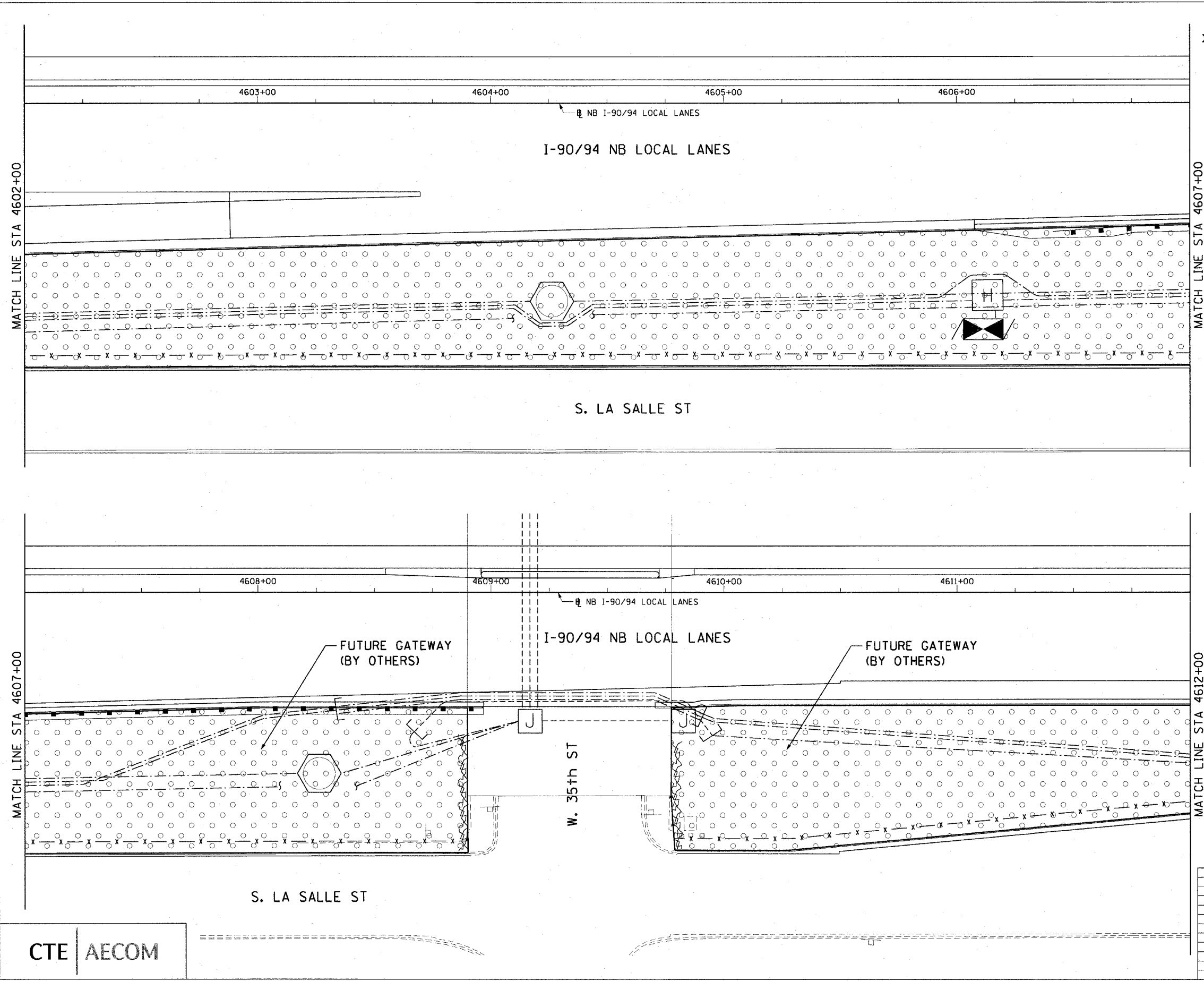


F.A.I. R/F:	SECTION	COUNTY	TOTAL SHEETS	SHEET NO.
90/94	2005-066 LS	COOK	77	73
STA. 4602+00		TO STA. 4612+00		
FED. ROAD DIST. NO. 1		ILLINOIS FED. AID PROJECT		

60A72



REVISIONS	
NAME	DATE

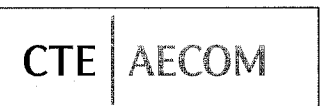
SHT-64 of 67

ILLINOIS DEPARTMENT OF TRANSPORTATION
 F.A.I. 90/94 (DAN RYAN EXPRESSWAY)
 NB ROADSIDE EMBANKMENT LANDSCAPE

PROPOSED IMPROVEMENT
 1-57 INTERCHANGE TO 31ST STREET

SCALE: 1"=20'
 DATE: JUNE 2008

DRAWN BY: LAM
 CHECKED BY: RMG



P:\200460\90\94\30-roadside embankment\STA\2005-066-LS-2005-066-LS-73.dwg

6/5/08 10:16 AM