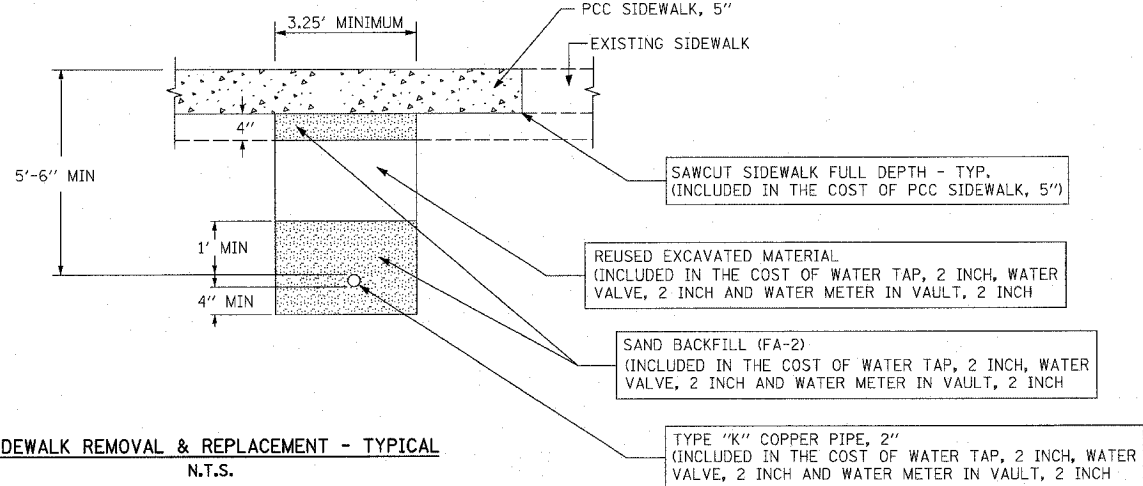
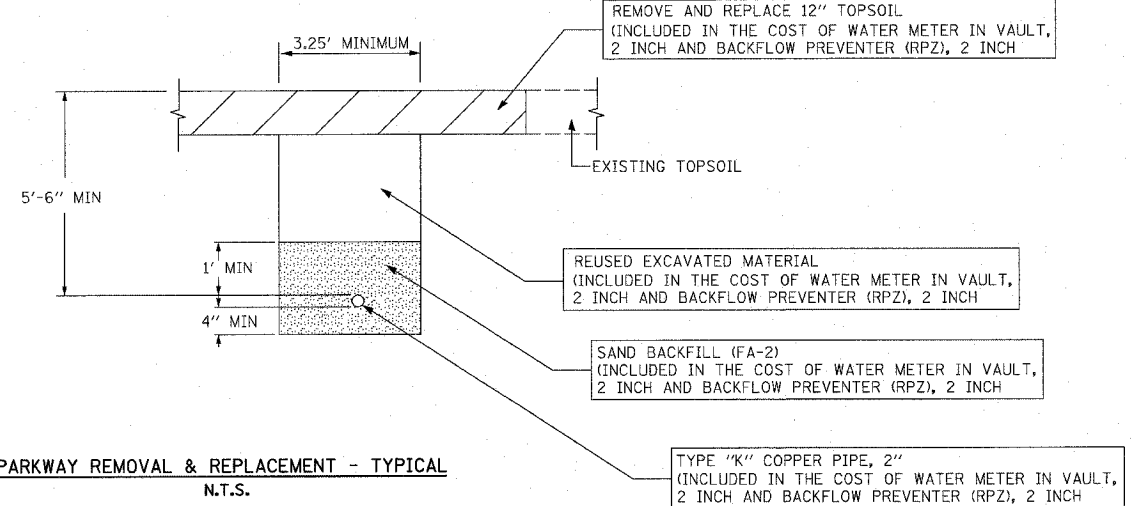


F.A.I.	SECTION	COUNTY	TOTAL SHEETS	SHEET NO.
94/90	*	COOK	38	29
STA.	TO STA.			
FED. ROAD DIST. NO.	ILLINOIS	FED. AID PROJECT		
62303		2005-073 LS		

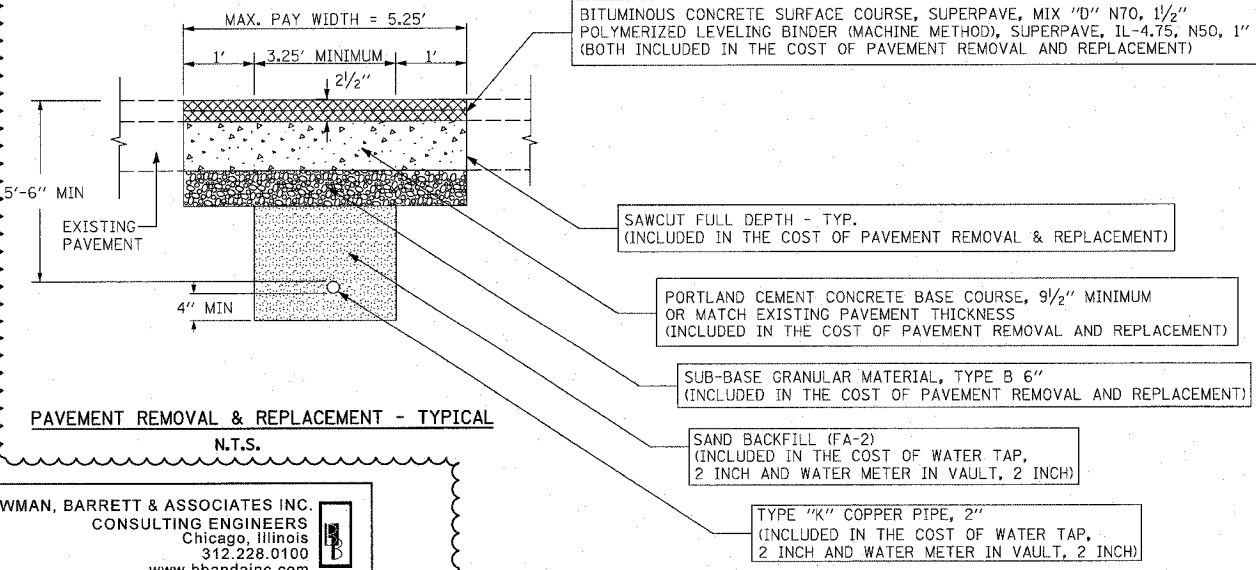
MAG60060401M122F122F SHEET S660 22F00103.401



**SIDEWALK REMOVAL & REPLACEMENT - TYPICAL**  
N.T.S.



**PARKWAY REMOVAL & REPLACEMENT - TYPICAL**  
N.T.S.



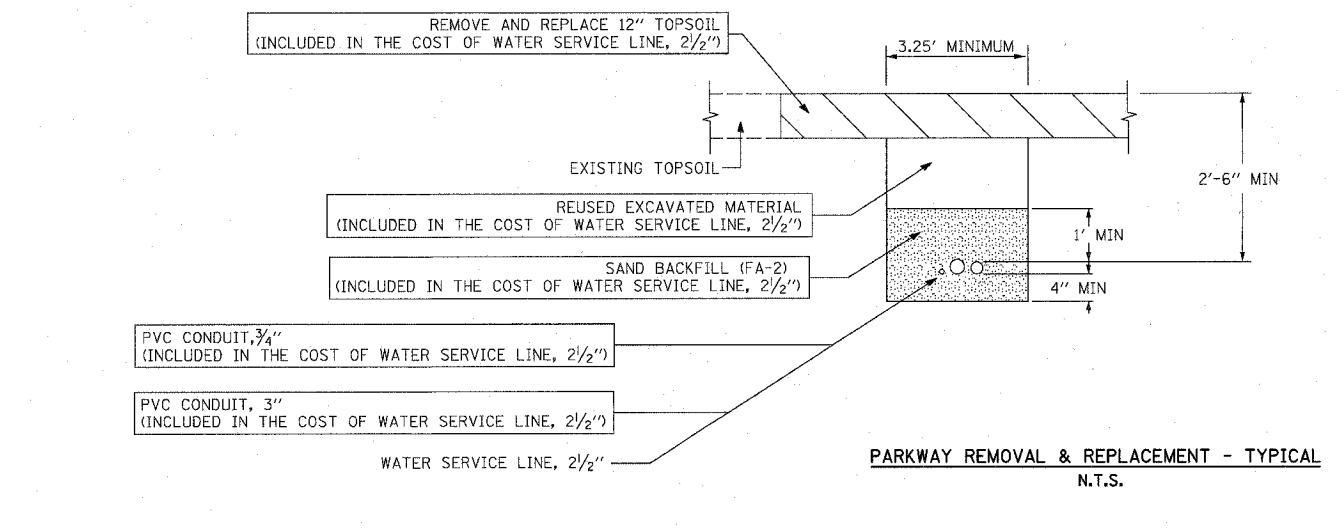
**PAVEMENT REMOVAL & REPLACEMENT - TYPICAL**  
N.T.S.

BOWMAN, BARRETT & ASSOCIATES INC.  
CONSULTING ENGINEERS  
Chicago, Illinois  
312.228.0100  
www.bbainc.com

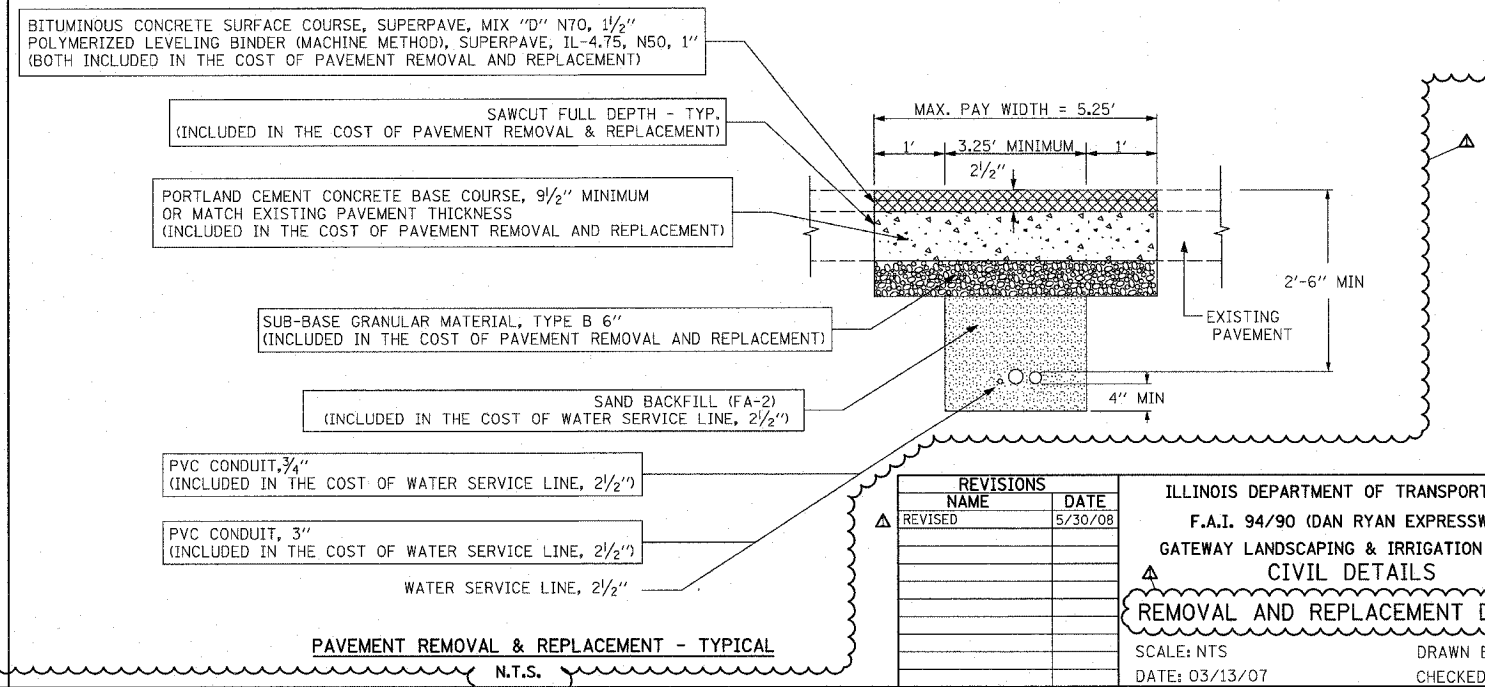
**NOTES:**

- ALL BACKFILL MATERIAL (SAND BACKFILL, SUB-BASE GRANULAR MATERIAL, TYPE B AND REUSED EXCAVATED MATERIAL) SHALL BE DEPOSITED IN UNIFORM LIFTS NOT EXCEEDING 12" IN DEPTH, LOOSE MEASUREMENT, AND EACH LIFT SHALL BE COMPACTED BY MECHANICAL MEANS TO THE SATISFACTION OF THE ENGINEER.
- PAVEMENT SHALL BE REMOVED TO NEAREST CONSTRUCTION JOINT IF TRENCH EDGE IS 2' OR LESS FROM JOINT (TO BE DETERMINED BY THE ENGINEER). THE MAX. PAY WIDTH WILL BE INCREASED ACCORDINGLY AT ANY SUCH LOCATIONS.
- BITUMINOUS MATERIALS (PRIME COAT) SHALL BE PLACED ON THE NEWLY PLACED PORTLAND CEMENT CONCRETE BASE COURSE, 9 1/2" AND ON THE NEWLY PLACED POLYMERIZED LEVELING BINDER (MACHINE METHOD), SUPERPAVE, IL-4.75, N50, 1"

TYPE K COPPER PIPE, 2"  
WATER SERVICE, LINE 2 1/2"



**PARKWAY REMOVAL & REPLACEMENT - TYPICAL**  
N.T.S.



**PAVEMENT REMOVAL & REPLACEMENT - TYPICAL**  
N.T.S.

REVISIONS		DATE
NAME		
Δ REVIS		5/30/08

ILLINOIS DEPARTMENT OF TRANSPORTATION  
F.A.I. 94/90 (DAN RYAN EXPRESSWAY)  
GATEWAY LANDSCAPING & IRRIGATION @ 35TH  
CIVIL DETAILS  
**REMOVAL AND REPLACEMENT DETAILS**  
SCALE: NTS  
DATE: 03/13/07  
DRAWN BY: JDC  
CHECKED BY: DM

CDT-03  
5/29/2008 3:16:17 PM