

INDEX OF SHEETS

SHEET	DESCRIPTION
1	COVER SHEET, INDEX, HIGHWAY STANDARDS
2	GENERAL NOTES
3	SUMMARY OF QUANTITIES
4-8	ALIGNMENT PLANS, SURVEY TIES AND CONTROL POINTS
9-10	MAINTENANCE OF TRAFFIC
11-14	EXISTING CONDITIONS AND UTILITIES PLAN
15-16	WATER SERVICE LINE PLAN
17-20	35TH ST. GATEWAY LANDSCAPE PLAN
21-22	35TH ST. GATEWAY LAYOUT
23	35TH ST. GATEWAY IRRIGATION PLAN
24	35TH ST. GATEWAY LANDSCAPE DETAILS
25	35TH ST. GATEWAY OVERALL PLANT LIST
26	EROSION CONTROL PLAN
27-30	CIVIL DETAILS
31-38	DISTRICT ONE DETAILS

IDOT HIGHWAY STANDARDS

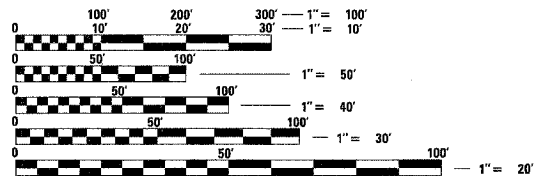
STANDARD	DESCRIPTION
000001-05	STANDARD SYMBOLS, ABBREVIATIONS, AND PATTERNS
001006	DECIMAL OF AN INCH AND OF A FOOT
606001-03	CONCRETE CURB TYPE B AND COMBINATION CONCRETE CURB AND GUTTER
701101-01	'OFF-ROAD OPERATIONS, MULTILANE 45M (15') TO 600mm (24") FROM PAVEMENT EDGE'
701601-05	URBAN LANE CLOSURE, MULTILANE, 1W OR 2W WITH NONTRAVERSABLE MEDIAN
701701-05	URBAN LANE CLOSURE, MULTILANE INTERSECTION
701801-03	LANE CLOSURE MULTILANE 1W OR 2W CROSSWALK OR SIDEWALK CLOSURE
701901	TRAFFIC CONTROL DEVICES

PROJECT LOCATED IN CITY OF CHICAGO

DESIGN DESIGNATION

LA SALLE ST: 8275 (20) URBAN COLLECTOR

FRONTAGE ROAD:	ADT (2020)	DESIGN SPEED	POSTED SPEED
LA SALLE ST	15,000	30	25
WENTWORTH AVE	15,000	30	25

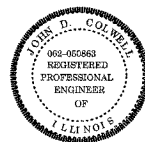


FULL SIZE PLANS HAVE BEEN PREPARED USING STANDARD ENGINEERING SCALES. REDUCED SIZED PLANS WILL NOT CONFORM TO STANDARD SCALES. IN MAKING MEASUREMENTS ON REDUCED PLANS, THE ABOVE SCALES MAY BE USED.

BEFORE EXCAVATING CALL:
CHICAGO UTILITY ALERT NETWORK
(312) 744-7000

CONTRACT NO. 60A79

DISTRICT ONE DESIGNCONSULTANT SERVICES PROJECT MANAGER
RAJENDRA SHAH (847) 705-4555



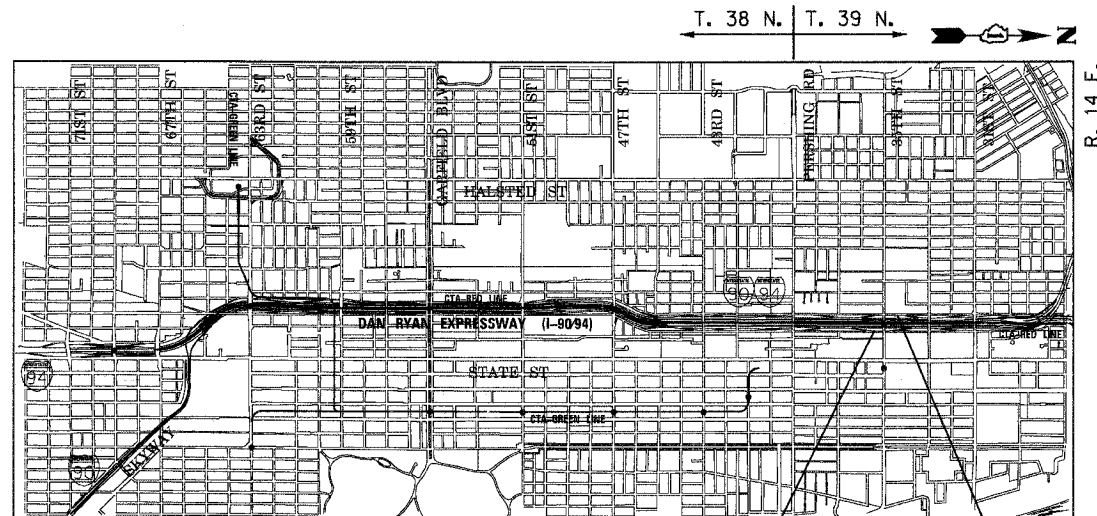
SIGNATURE *John Colwell*
DATE 3/13/08
EXPIRES 11/30/09

LOCATION MAP

0 1/2 MILE 1 MILE 1" = 1/2 MILE
GROSS LENGTH OF PROJECT = 2,025 FT (0.384 MILES)
NET LENGTH OF PROJECT = 2,025 FT (0.384 MILES)

PROJECT BEGINS
NB LA SALLE ST STA 420+35
SB WENTWORTH AVE STA 122+65

PROJECT ENDS
NB LA SALLE ST STA 430+50
SB WENTWORTH AVE STA 132+75



STATE OF ILLINOIS
DEPARTMENT OF TRANSPORTATION
DIVISION OF HIGHWAYS

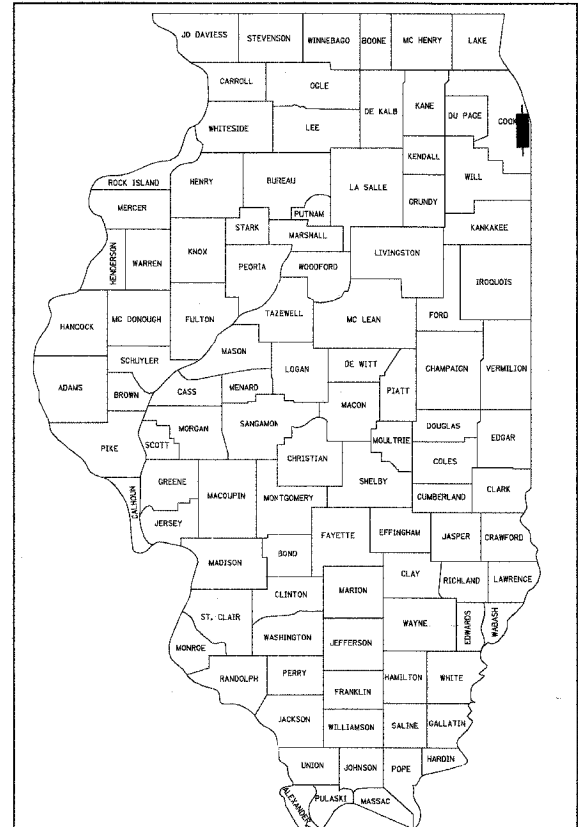
**PLANS FOR PROPOSED
FEDERAL AID HIGHWAY**

F.A.I. ROUTE 90/94 (DAN RYAN EXPRESSWAY)
SECTION 2005-073 LS
PROJECT: IM-0005(587)

GATEWAY LANDSCAPING & IRRIGATION at 35TH STREET
C-91-109-06

F.A.I. RTE.	SECTION	COUNTY	TOTAL SHEETS	SHEET NO.
90/94	2005-073 LS	COOK	38	1

60A79



LOCATION OF SECTION INDICATED THUS: - [Symbol] -

STATE OF ILLINOIS
DEPARTMENT OF TRANSPORTATION
DIVISION OF HIGHWAYS

SUBMITTED MARCH 21, 2008

Diane M. O'Neil
DEPUTY DIRECTOR OF HIGHWAYS, REGION ENGINEER

Eric E. Harn
INTERIM ENGINEER OF DESIGN AND ENVIRONMENT

Christine M. Reed
DIRECTOR OF HIGHWAYS, CHIEF ENGINEER

**PRINTED BY THE AUTHORITY
OF THE STATE OF ILLINOIS**

BOWMAN, BARRETT & ASSOCIATES INC.
CONSULTING ENGINEERS
Chicago, Illinois
312.228.0100
www.bbainc.com

