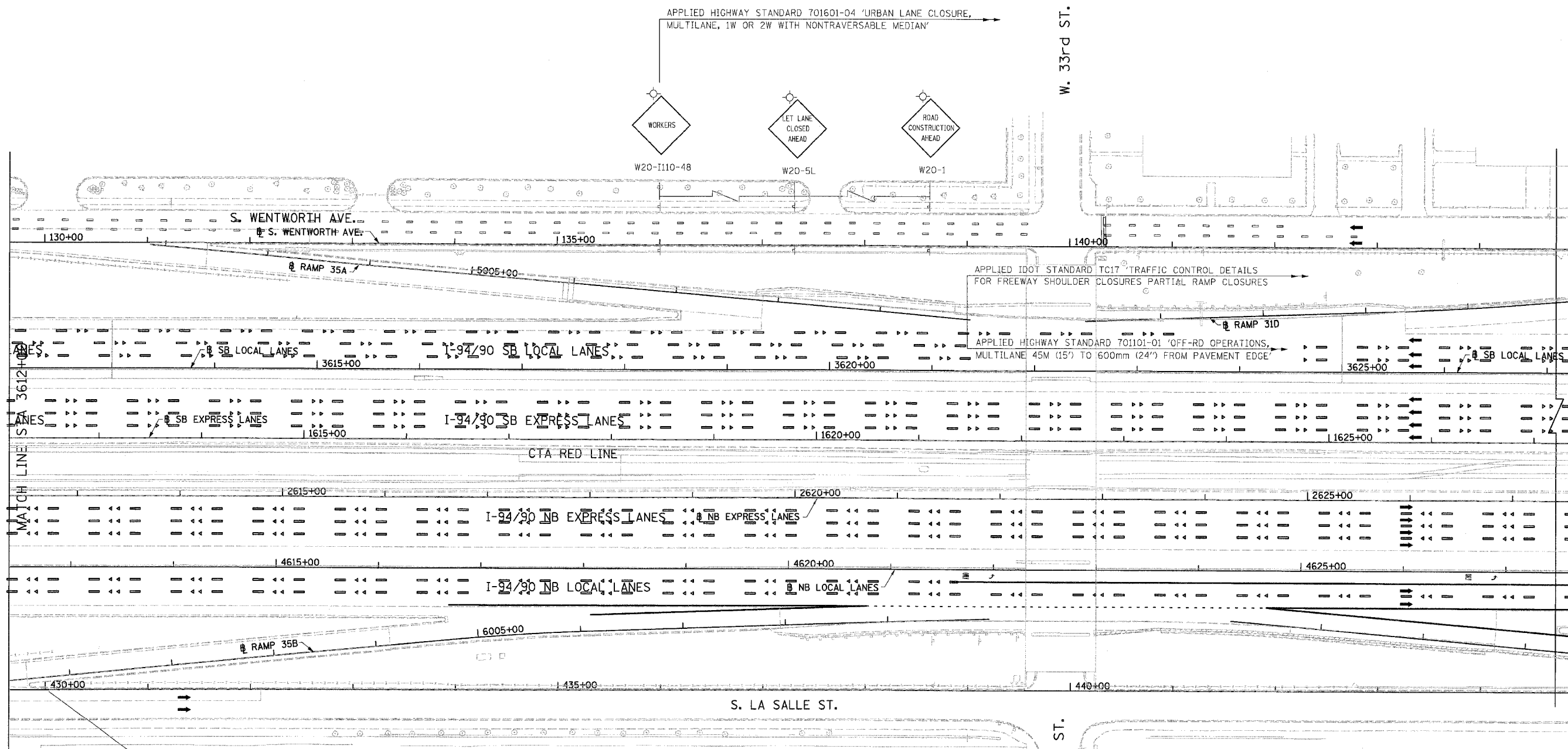
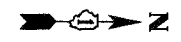


F.A.I.	SECTION	COUNTY	TOTAL SHEETS	SHEET NO.
94/90		COOK	38	10
STA.		TO STA.		
FED. ROAD DIST. NO.		ILLINOIS FED. AID PROJECT		
60A79		2005-073 LS		



APPLIED HIGHWAY STANDARD 701601-04 'URBAN LANE CLOSURE, MULTILANE, 1W OR 2W WITH NONTRAVERSABLE MEDIAN'

APPLIED IDOT STANDARD TC17 'TRAFFIC CONTROL DETAILS FOR FREEWAY SHOULDER CLOSURES PARTIAL RAMP CLOSURES'

APPLIED HIGHWAY STANDARD 701101-01 'OFF-RD OPERATIONS, MULTILANE 45M (15') TO 600mm (24") FROM PAVEMENT EDGE'

APPLIED IDOT STANDARD TC17 'TRAFFIC CONTROL DETAILS FOR FREEWAY SHOULDER CLOSURES PARTIAL RAMP CLOSURES'

BOWMAN, BARRETT & ASSOCIATES INC.  
CONSULTING ENGINEERS  
Chicago, Illinois  
312.228.0100  
www.bbainc.com

REVISIONS	
NAME	DATE

ILLINOIS DEPARTMENT OF TRANSPORTATION  
F.A.I. 94/90 (DAN RYAN EXPRESSWAY)  
GATEWAY LANDSCAPING & IRRIGATION @ 35TH  
MAINTENANCE OF TRAFFIC

SCALE: 1"=50  
DATE: 03/13/07  
DRAWN BY: RA  
CHECKED BY: RS

MOT-02  
1/28/08 AM  
3/15/2008