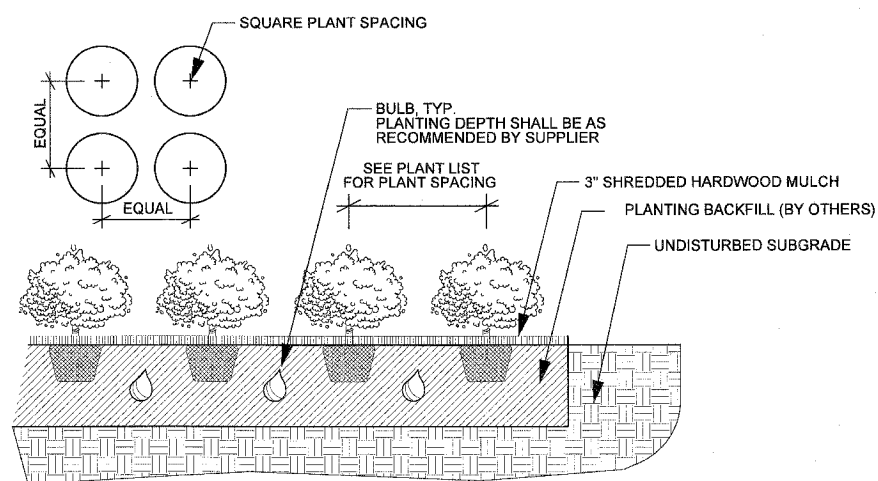
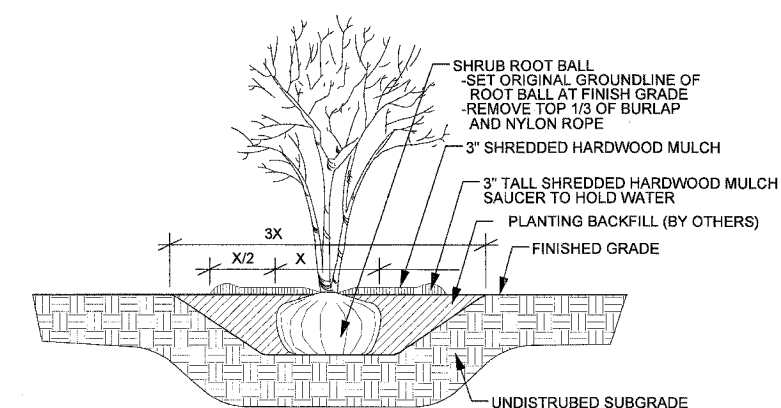


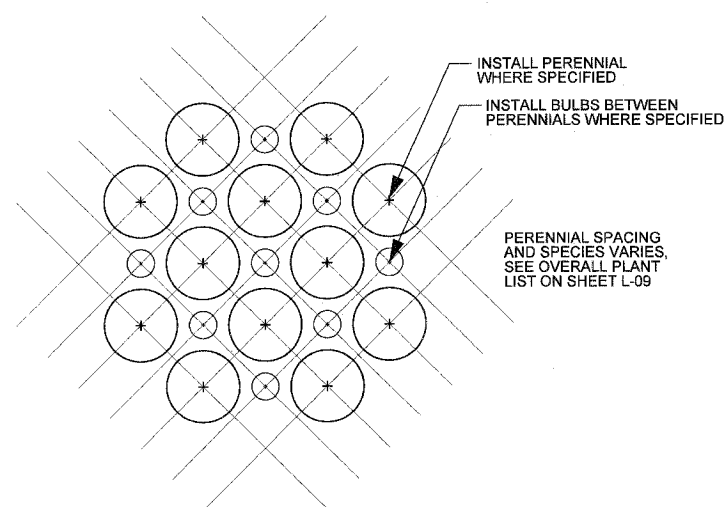
1 SHADE TREE PLANTING DETAIL
No Scale



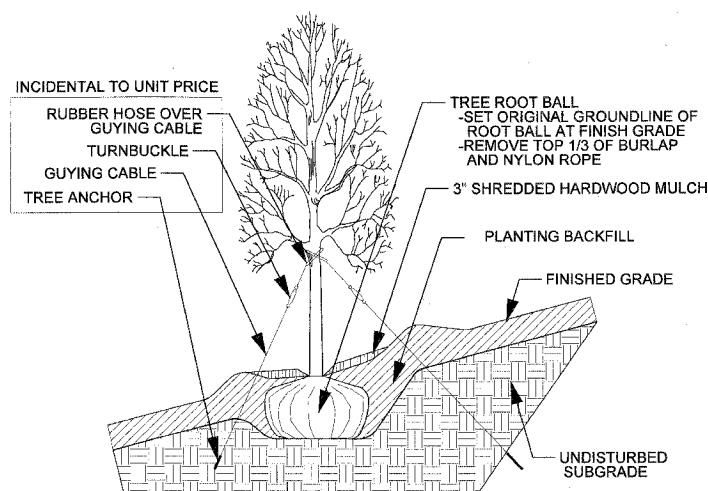
2 PERENNIAL AND BULB PLANTING DETAIL
No Scale



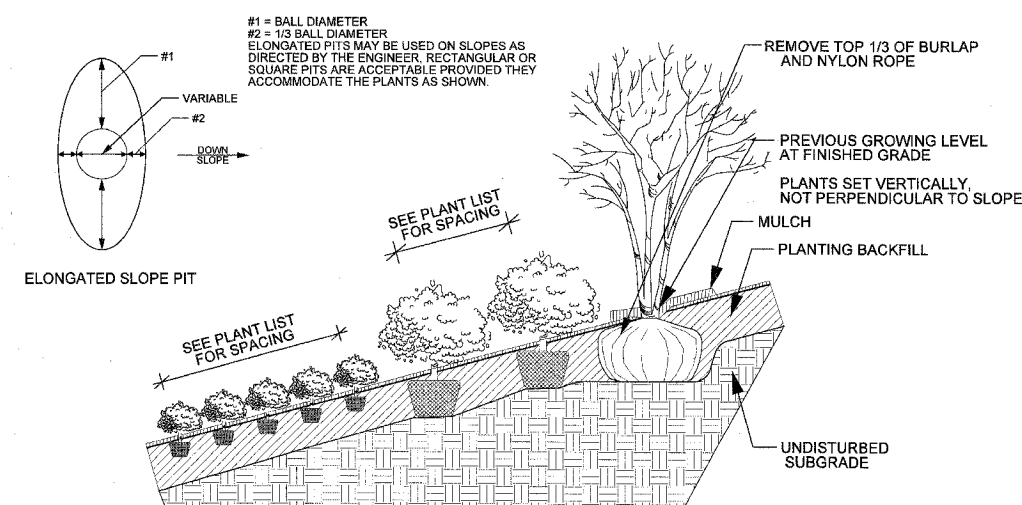
3 SHRUB PLANTING DETAIL
No Scale



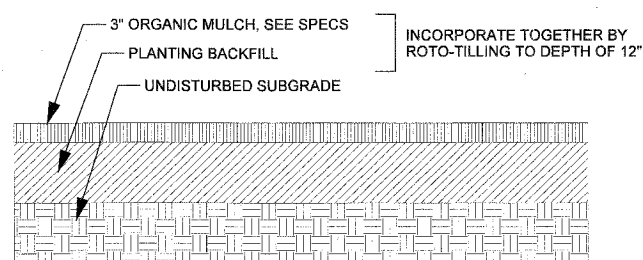
4 INTERPLANTING DETAIL
No Scale



5 TREE PLANTING ON SLOPE DETAIL
No Scale



6 PERENNIAL AND SHRUB PLANTING ON SLOPE DETAIL
No Scale



7 SOIL AMENDMENT, ORGANIC
No Scale

NOTE: ANY CLAY SOIL EXCAVATED FOR TREE OR SHRUB INSTALLATION SHALL BE REMOVED FROM SITE AND HOLE BACKFILLED WITH TOPSOIL FROM UPPER PORTION OF EXCAVATION.

REVISIONS		DATE
NAME		4.25.08
REVISOR		