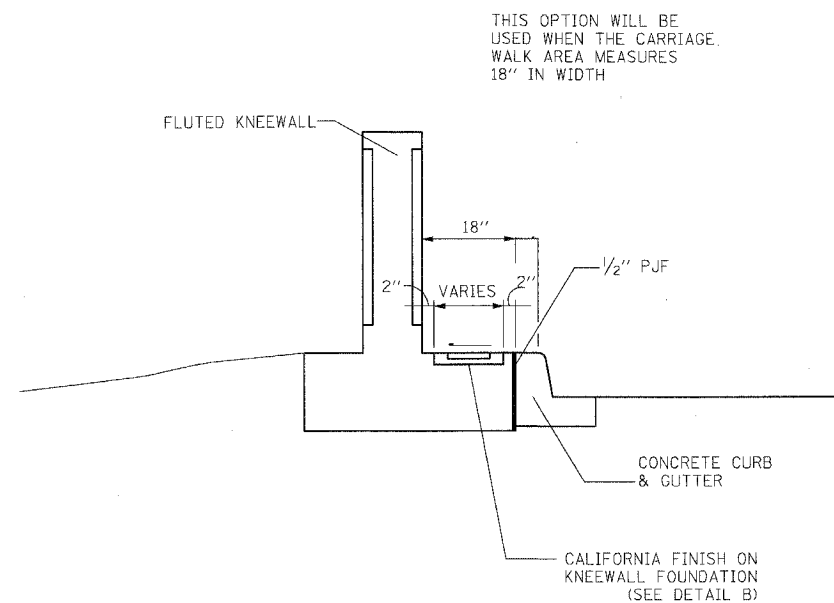
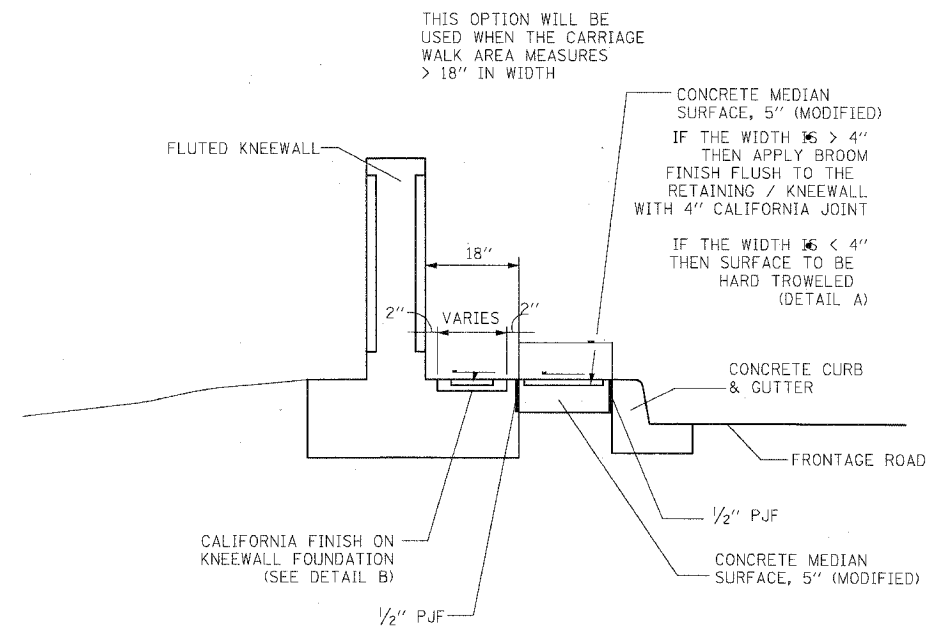


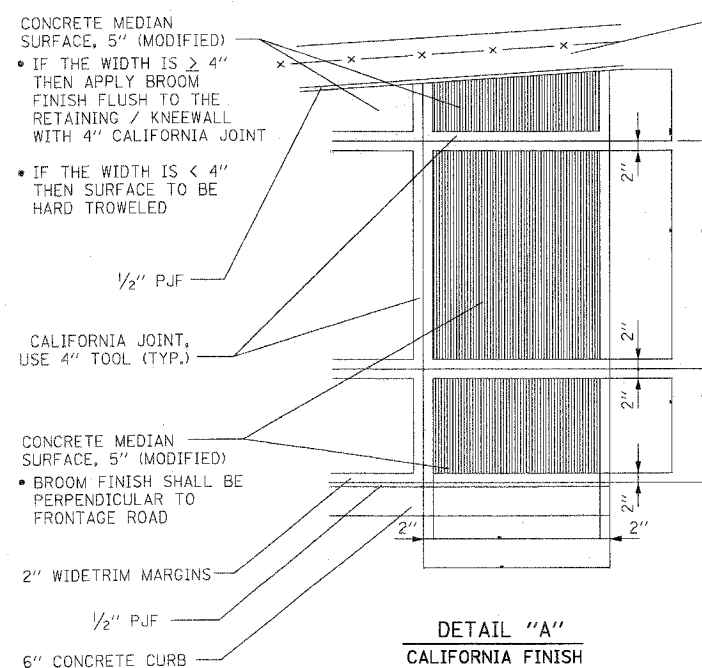
F.A.I.	SECTION	COUNTY	TOTAL SHEETS	SHEET NO.
94/90	*	COOK	38	30
STA.	TO STA.			
FED. ROAD DIST. NO. ILLINOIS	FED. AID PROJECT			
62303	* 2005-073 LS			



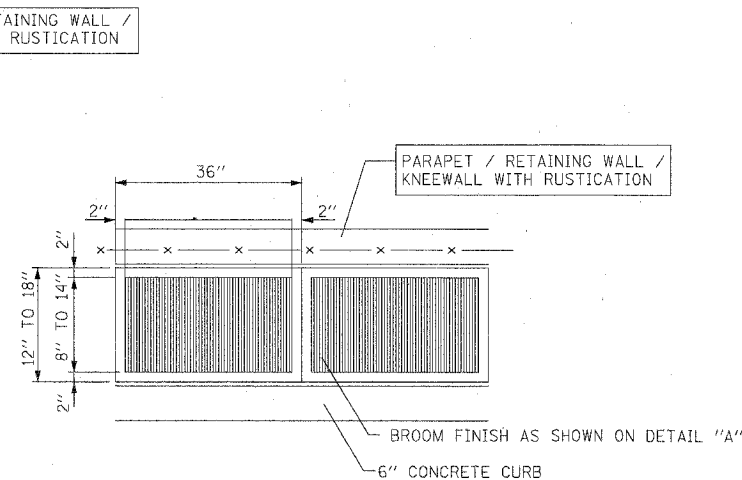
CARRIAGE WALK
WIDTH = 18"



CARRIAGE WALK
WIDTH > 18"



DETAIL "A"
CALIFORNIA FINISH



DETAIL "B"
CALIFORNIA FINISH

BOWMAN, BARRETT & ASSOCIATES INC.
CONSULTING ENGINEERS
Chicago, Illinois
312.228.0100
www.bbainc.com

REVISIONS	
NAME	DATE

CDT-04
ILLINOIS DEPARTMENT OF TRANSPORTATION
F.A.I. 94/90 (DAN RYAN EXPRESSWAY)
GATEWAY LANDSCAPING & IRRIGATION @ 35TH
CIVIL DETAILS
CONCRETE MEDIAN SURFACE 5"
(MODIFIED) CALIFORNIA FINISH
SCALE: NTS
DATE: 03/13/07
DRAWN BY: CDOT
CHECKED BY: CDOT

r:\660\cdot\civ\22f\22f_sheets\660_22f\04.dgn 4/25/2008 4:40:44 PM