

INDEX OF SHEETS
FOR INDEX OF SHEETS, SEE SHEET NO. 2

DESIGN NUMBER
D-91-417-01

DESIGN DESIGNATION
DAN RYAN EXPRESSWAY: 15309(35) ARTERIAL 38.10 (PCC-30)

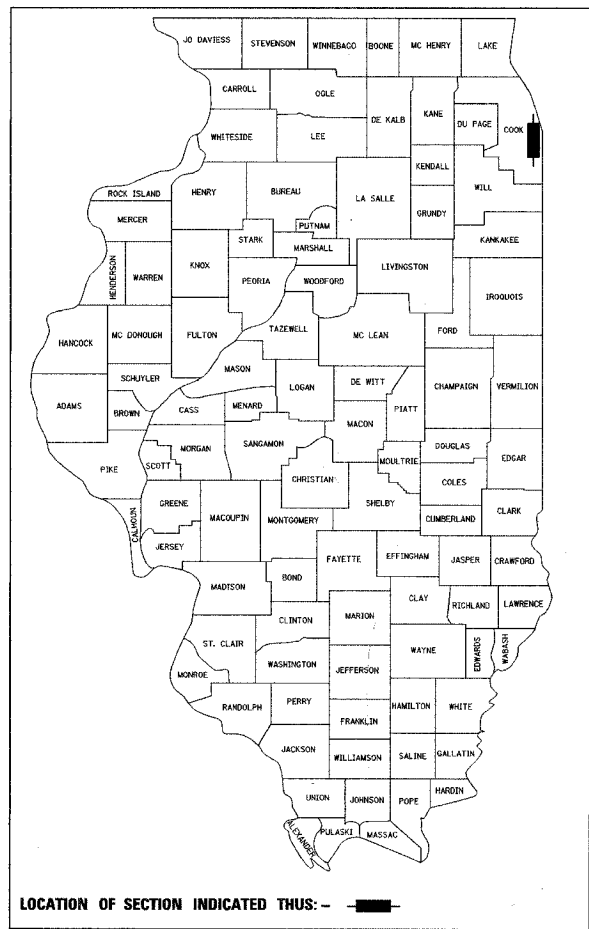
TRAFFIC VOLUMES AND SPEEDS

	ADT (2020)	DESIGN SPEED	POSTED SPEED
NB LOCAL LANES	69945	60	45
SB LOCAL LANES	63440	60	45
SB EXPRESS LANES	98495	60	50
SB EXPRESS LANES	100155	60	50

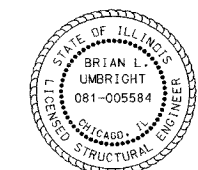
STATE OF ILLINOIS
DEPARTMENT OF TRANSPORTATION
DIVISION OF HIGHWAYS

**PLANS FOR PROPOSED
FEDERAL AID HIGHWAY**

**F.A.I. ROUTE 94/90 (DAN RYAN EXPRESSWAY)
DAN RYAN ELEVATED BRIDGE
BEARING REPLACEMENT AND STEEL REPAIR
SECTION 2005-086 I
COOK COUNTY
C-91-238-06**



SIGNED: *Richard W. Stafford*
DATE: March 7, 2008
EXPIRES: NOVEMBER 30, 2009



SIGNED: *Brian L. Umbrecht*
DATE: March 7, 2008
EXPIRES: NOVEMBER 30, 2008

STATE OF ILLINOIS
DEPARTMENT OF TRANSPORTATION
DIVISION OF HIGHWAYS

SUBMITTED FEBRUARY 21, 2008

Devin M. O'Keefe *sc*
DEPUTY DIRECTOR OF HIGHWAYS, REGION ENGINEER

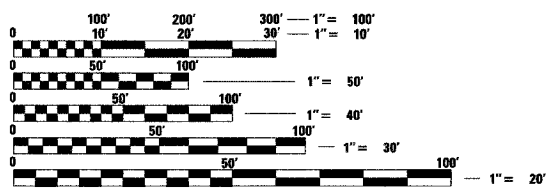
May 9, 2008
Eric E. Harms
INTERIM ENGINEER OF DESIGN AND ENVIRONMENT

May 9, 2008
Christine M. Reed
DIRECTOR OF HIGHWAYS, CHIEF ENGINEER

**PRINTED BY THE AUTHORITY
OF THE STATE OF ILLINOIS**

BOWMAN, BARRETT & ASSOCIATES INC.
CONSULTING ENGINEERS
Chicago, Illinois
312.228.0100
www.bbandainc.com

PROJECT LOCATED IN CITY OF CHICAGO

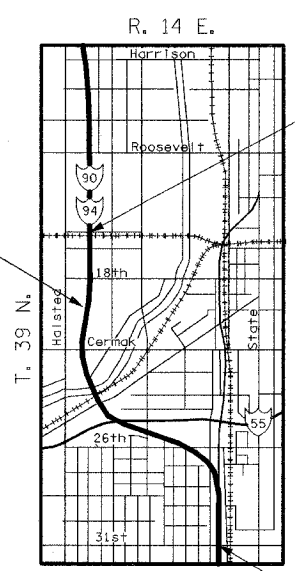


FULL SIZE PLANS HAVE BEEN PREPARED USING STANDARD ENGINEERING SCALES. REDUCED SIZED PLANS WILL NOT CONFORM TO STANDARD SCALES. IN MAKING MEASUREMENTS ON REDUCED PLANS, THE ABOVE SCALES MAY BE USED.

FOR UTILITY LOCATION INFORMATION FOR EXCAVATION
CALL CHICAGO UTILITY ALERT NETWORK
(C.U.A.N.) 312-744-7000

CONTRACT NO. 60B07

BELOW DECK REPAIRS TO THE FOLLOWING BRIDGES: (SOUTH TO NORTH)
SN 016-1118, SN 016-1117
SN 016-1067, SN 016-1116
SN 016-1115, SN 016-1062
SN 016-1046, SN 016-1059
SN 016-1140, SN 016-1047
SN 016-1070, SN 016-1050
SN 016-1066, SN 016-1114
SN 016-1113, SN 016-1112
SN 016-1111, SN 016-1110
SN 016-0137
(19 TOTAL STRUCTURES)



PROJECT ENDS
NORTH OF 15TH ST.
STA. 189+01.30

PROJECT BEGINS
28TH ST.
STA. 2542+76.00

LOCATION MAP

GROSS LENGTH OF PROJECT = 10,487 FT = 1.986 Miles
NET LENGTH OF PROJECT = 10,487 FT = 1.986 Miles

DISTRICT 1 DESIGN/PLAN PREPARATION ENGINEER: RAJENDRA SHAH (847) 705-4555