

**TRAFFIC CONTROL - GENERAL NOTES**

1. THE TABLE HERE, 'TRAFFIC CONTROL AND PROTECTION', SHOWS SUGGESTING CLOSURES TO ACCOMMODATE WORK NEEDED ON THE DAN RYAN BRIDGE. CONTRACTOR SHALL CHECK WITH ENGINEER WHEN MAKING CHANGES.
2. TRAFFIC CONTROL AND PROTECTION FOR THE WORK ZONES ON THE CITY STREETS SHALL BE PAID FOR AT THE CONTRACT LUMP SUM PRICE FOR 'TRAFFIC CONTROL AND PROTECTION FOR (SURFACE STREETS)'.  
FOR (SURFACE STREETS).
3. TRAFFIC CONTROL AND PROTECTION ON DAN RYAN ELEVATED BRIDGE WORK ZONE SHALL BE PAID FOR AT THE CONTRACT LUMP SUM PRICE FOR 'TRAFFIC CONTROL AND PROTECTION (EXPRESSWAYS).
4. ALL PLACEMENT, MOUNTING, RELOCATING AND REMOVING SIGNS FOR THE MOT ON DAN RYAN SHALL BE INCLUDED IN THE CONTRACT LUMP SUM COST OF 'TRAFFIC CONTROL AND PROTECTION (EXPRESSWAYS).
5. CONTRACTOR SHALL COORDINATE WITH CDOT FOR NIGHTTIME AND DAYTIME CLOSURES ON LANES, SIDEWALKS AND SHOULDERS.
6. CONTRACTOR SHALL COORDINATE WITH IDOT ON NIGHTTIME AND DAYTIME CLOSURES.
7. LANE CLOSURES, SHOULDER CLOSURES, SIDEWALK CLOSURES, SIGNING AND BARRICADE PLACEMENT SHALL BE IN ACCORDANCE WITH THE LATEST IDOT HIGHWAY STANDARD DRAWINGS. IDOT DISTRICT 1 STANDARD DETAILS AND DETAIL INCLUDED IN THIS CONTRACT.
8. ALL DRUMS, VERTICAL PANELS, AND BARRICADES IMMEDIATELY ADJACENT TO THE EDGE OF TRAVELED WAY SHALL BE EQUIPPED WITH STEADY BURN MONO-DIRECTIONAL LIGHTS.
9. IN WORK ZONE AREAS, NO PARKING IS ALLOWED AT ANY TIME. APPROPRIATE SIGNING SHALL BE PROVIDED BY THE CONTRACTOR ALONG WORK ZONE/CITY STREETS TO COMMUNICATE PARKING RESTRICTIONS. FURNISHING, REMOVING AND RELOCATING THESE SIGNS IS INCLUDED IN THE CONTRACT LUMP SUM PRICE FOR 'TRAFFIC CONTROL AND PROTECTION FOR (SURFACE STREETS)'.  
FOR (SURFACE STREETS).

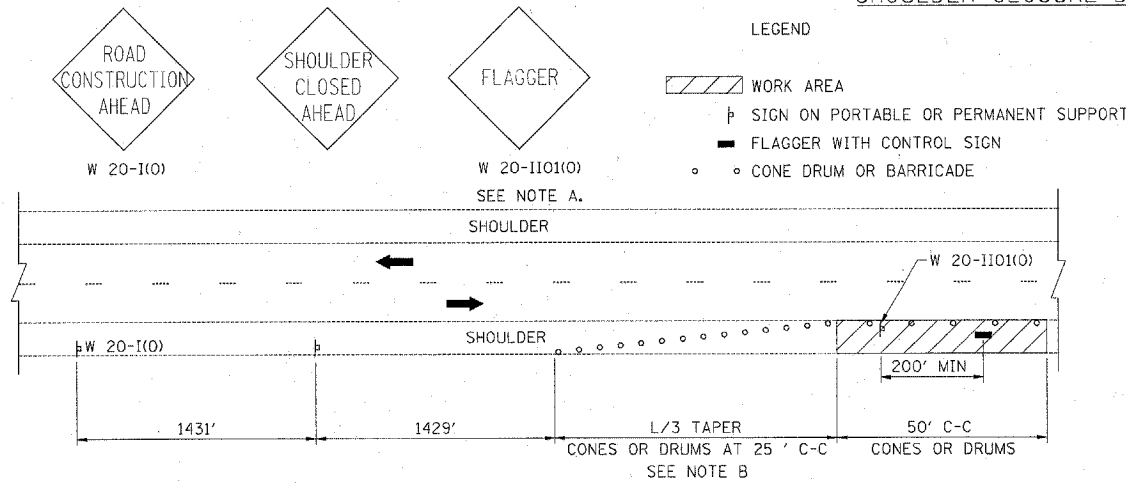
10. THE CONTRACTOR IS RESPONSIBLE FOR KEEPING CITY STREETS TRAFFIC INTERRUPTION TO A MINIMUM. RELOCATION OF TRAFFIC CONTROL DEVICES AS NEEDED IS INCIDENTAL TO 'TRAFFIC CONTROL AND PROTECTION FOR (SURFACE STREETS).
11. ALL TRAFFIC CONTROL DEVICES SHALL BE REMOVED AND CONSTRUCTION DEBRIS SHALL BE CLEANED UP BEFORE OPENING THE SHOULDER, LANE OR SIDEWALK TO TRAFFIC. ALL IS INCLUDED IN 'TRAFFIC CONTROL AND PROTECTION FOR SURFACE STREETS'.

**TRAFFIC CONTROL AND PROTECTION**

\*\*FOR STRUCTURE LOCATION, SEE 'VIADUCT KEY PLAN', SHEET NO. 5.

STRUCTURE	PIER/SPAN	SEE SHEET NO.	STREET/EXPRESSWAY REQUIRING TRAFFIC CONTROL	SUGGESTED MOT
SN 016-1112	C18	53	RAMP D	SHOULDER CLOSURE: IDOT DISTRICT STANDARDS
SN 016-1113	C6	24 & 41	UNION ST	LANE CLOSURE: HWY STDS 701501-03, 701801-03, 701701-04
SN 016-1115	P21	26 & 42	ARCHER AVE.	LANE CLOSURE: HWY STDS 701501-03, 701801-03
SN 016-1116	P3/SPAN 3 P2/SPAN 3	27 & 52 27 & 44	S CANAL ST. NB DAN RYAN, RR YARD ACCESS RAMP	LANE CLOSURE: HWY STDS 701501-03, 701801-03 LANE CLOSURES: HWY STDS 701400, 701446, 701411-03, 701401-03, IDOT DISTRICT STDS.
SN016-1117	P2-P4 P6 P19 P19 P20 P21 P23 SPAN 18 SPAN 21 SPAN 22	27 & 117B 27 & 40 28 & 45 28 & 45 28,40,45,46 28 & 40 28 & 45 28 & 40 28 & 39 28 & 39	SB FRANKLIN CONNECTOR S. WENTWORTH AVE & 27 ST INT. S. PRINCETON AVE. WB 26TH ST. & PRINCETON AVE WB 26TH ST. WB 26TH ST. WB 26TH ST. WB 26TH ST. WB 26TH ST	LANE CLOSURE: HWY STDS 701400 LANE CLOSURE: HWY STDS 701501-03, 701801-03, 701701-04 LANE CLOSURE: HWY STDS 701501-03, 701801-03 LANE CLOSURE: HWY STDS 701501-03, 701801-03, 701701-04 LANE CLOSURE: HWY STDS 701501-03, 701801-03 LANE CLOSURE: HWY STDS 701501-03, 701801-03 LANE CLOSURE: HWY STDS 701501-03, 701801-03 LANE CLOSURE: HWY STDS 701501-03, 701801-03 LANE CLOSURE: HWY STDS 701501-03, 701801-03
SN 016-1118	SPAN H2 P H4 P H3	30 & 40 30,40,41 & 45 30 & 45	FRANKLIN CONNECTOR SB FRANKLIN ST. CONNECTOR NB FRANKLIN ST. CONNECTOR	LANE CLOSURES: HWY STDS 701400, 701446, 701411-03, 701401-03, IDOT DISTRICT STDS. LANE CLOSURES: HWY STDS 701400, 701446, 701411-03, 701401-03, IDOT DISTRICT STDS. SHOULDER CLOSURE: IDOT DISTRICT STDS.
SN 016-1115	P21 P17 P13 P14	26,40,41 26 & 45 26,46,47 26,46,47	ARCHER AVE. I-55 RAMP I-55 STEVENSON, RAMP D & NB DAN RYAN I-55 STEVENSON, NB & SB DAN RYAN	LANE CLOSURE: HWY STDS 701501-03, 701801-03 SHOULDER CLOSURE: IDOT DISTRICT STDS. LANE CLOSURES: HWY STDS 701400, 701446, 701411-03, 701401-03, IDOT DISTRICT STDS. LANE CLOSURES: HWY STDS 701400, 701446, 701411-03, 701401-03, IDOT DISTRICT STDS.
SN 016-1067	SPAN A4 SPAN A5 A5	29 & 39 29 & 39 29 & 48	S. WENTWORTH AVE S. WENTWORTH AVE S. WENTWORTH AVE	LANE CLOSURE: HWY STDS 701501-03, 701801-03 LANE CLOSURE: HWY STDS 701501-03, 701801-03 SHOULDER CLOSURE: IDOT DISTRICT STDS.
SN 016-1050	P80	31,33-36	I-55	SHOULDER CLOSURE: IDOT DISTRICT STDS.
SN 016-0137	SPANS 17&18	20 & 53	NB EXIT TO ROOSEVELT ST.	LANE CLOSURES: 701411-03, IDOT DISTRICT STDS.

**SHOULDER CLOSURE DETAIL**



THIS DETAIL IS USED HERE:

1. ON CDOT STREETS WHERE VEHICLES, EQUIPMENT, WORKERS OR THEIR ACTIVITIES ENCROACH IN AN AREA CLOSER THAN 15' TO THE EDGE OF PAVEMENT FOR A PERIOD IN EXCESS OF 15 MINUTES.

**BOWMAN, BARRETT & ASSOCIATES INC.**  
CONSULTING ENGINEERS  
Chicago, Illinois  
312.228.0100  
www.bbainc.com

REVISIONS		ILLINOIS DEPARTMENT OF TRANSPORTATION F.A.I. 94/90 (DAN RYAN EXPRESSWAY) DAN RYAN ELEVATED BRIDGE BEARING REPLACEMENT & STEEL REPAIR MAINTENANCE OF TRAFFIC GENERAL NOTES AND DETAILS
NAME	DATE	
		SCALE: NTS
		DATE: 3/7/2008
		DRAWN BY: RS
		CHECKED BY: RS