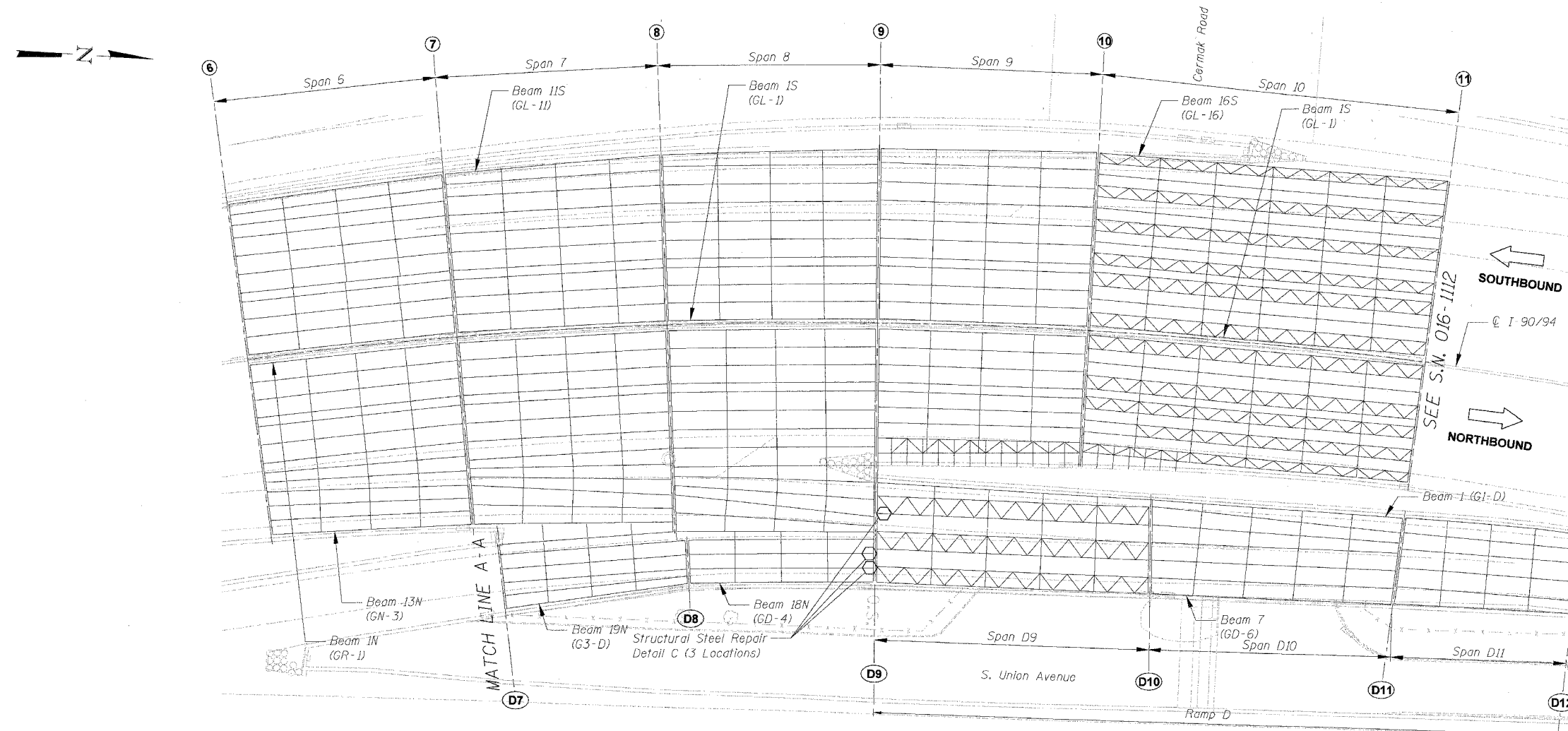
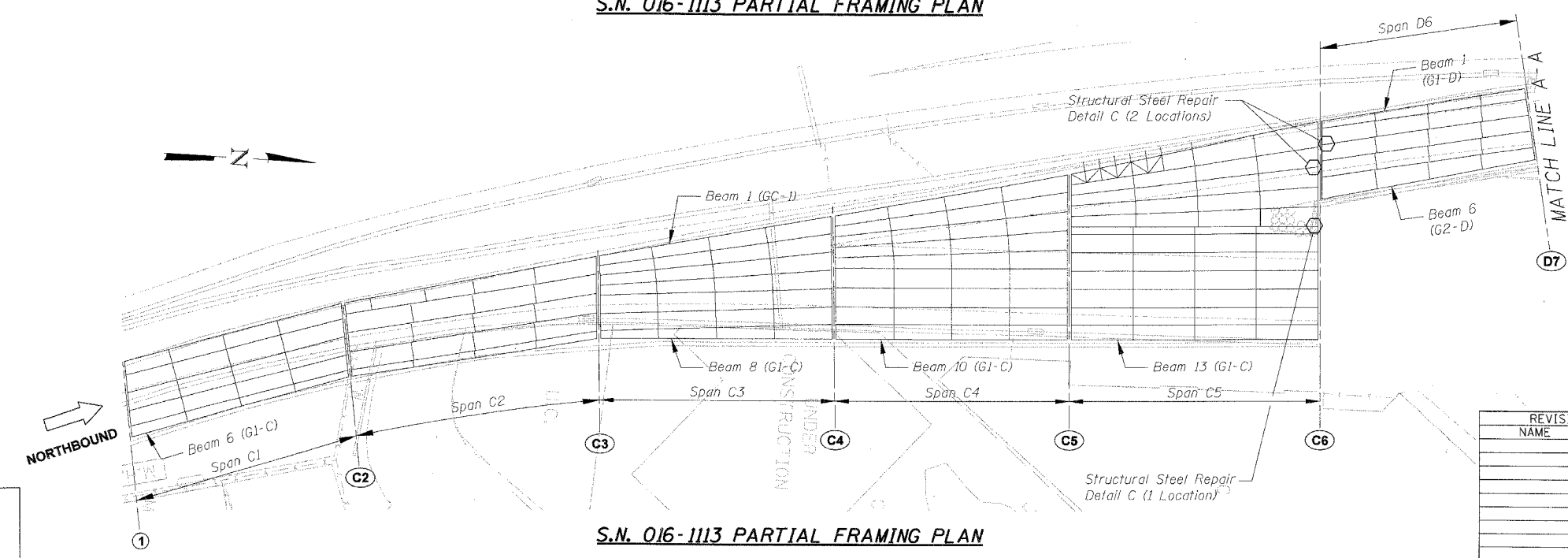


F.A.I.	SECTION	COUNTY	TOTAL SHEETS	SHEET NO.
94/90	2005-086 I	COOK	228	24
STA. TO STA.		FED. AID PROJECT		
60B07				



**S.N. 016-1113 PARTIAL FRAMING PLAN**



**S.N. 016-1113 PARTIAL FRAMING PLAN**

**ELEMENT IDENTIFICATION**

Elements on the Southbound Structure are identified 1S, 2S, 3S etc. starting from the centerline of I-90/94.

Elements on the Northbound Structure are identified 1N, 2N, 3N etc. starting from the centerline of I-90/94.

Elements on the Ramp Structures are identified 1, 2, 3 etc. from left to right looking on the direction of ramp traffic.

Numbers within ( ) refer to as-built beam designations.

① = Pier No.  
 ◻ = Location of Structural Steel Repair

BOWMAN, BARRETT & ASSOCIATES INC.  
 CONSULTING ENGINEERS  
 Chicago, Illinois  
 312.228.0100  
 www.bbainc.com

REVISIONS		ILLINOIS DEPARTMENT OF TRANSPORTATION F.A.I. 94/90 (DAN RYAN EXPRESSWAY) DAN RYAN ELEVATED BRIDGE BEARING REPLACEMENT & STEEL REPAIR PARTIAL FRAMING PLAN S.N. 016-1113
NAME	DATE	
		SCALE: NTS
		DATE: 3/7/2008
		DRAWN BY: LAM
		CHECKED BY: BLU