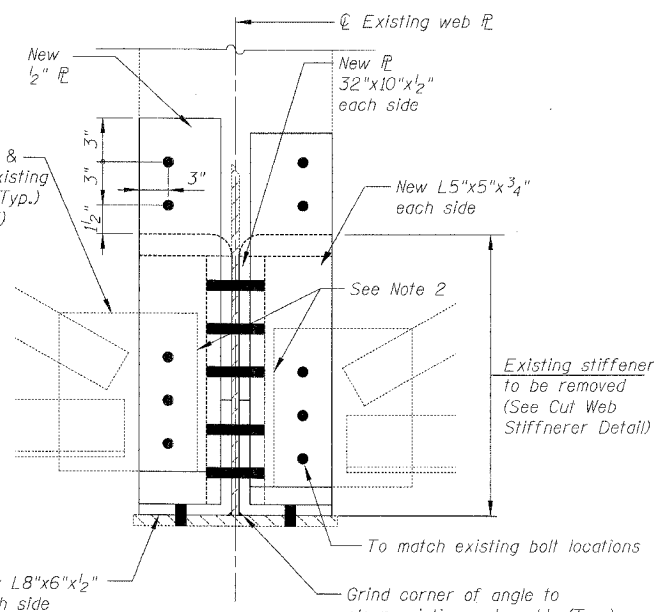
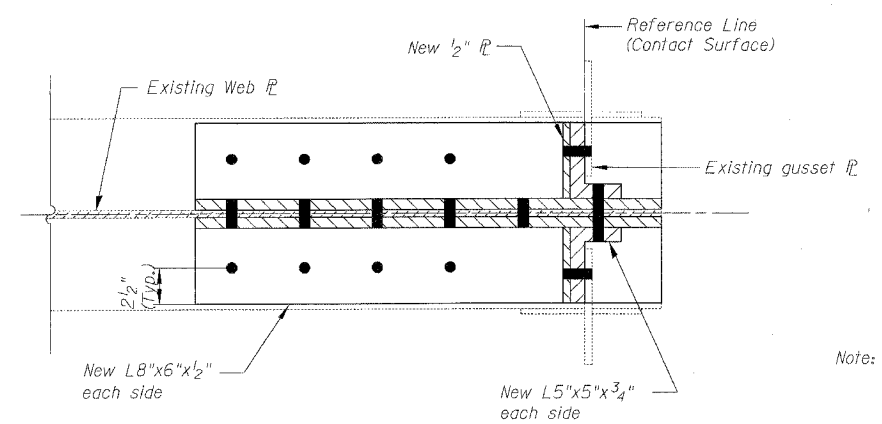


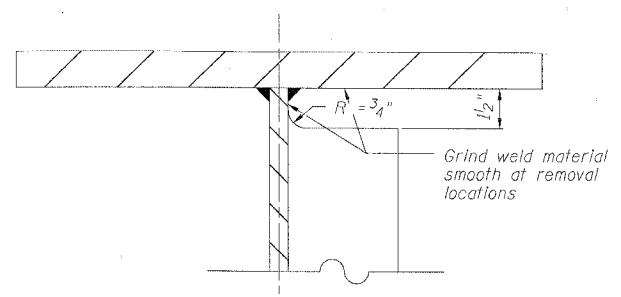
**ELEVATION**



**SECTION B-B**



**SECTION A-A**



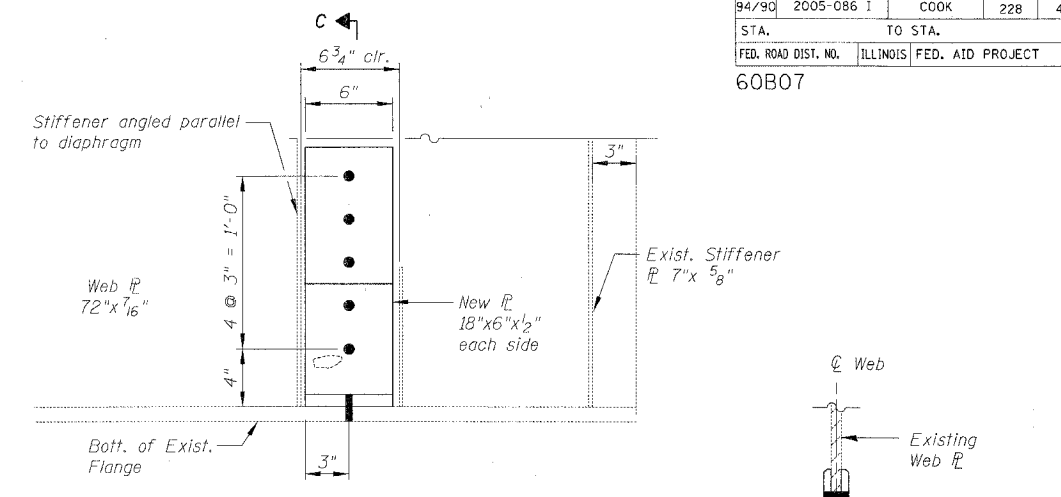
**CUT WEB STIFFENER DETAIL**

- Note: 1. Field cut web stiffener using saw, drill and / or grinding. Flame cutting will not be permitted within 2" of girder web or flange. Grind surfaces after cutting to a surface roughness of (Ra) 250u in. or less.
2. Contractor shall fabricate retrofit hardware providing holes subpunched for attachment to girder flange. Holes shall be reamed full size for attachment to the flange and drilled for attachment in the field.

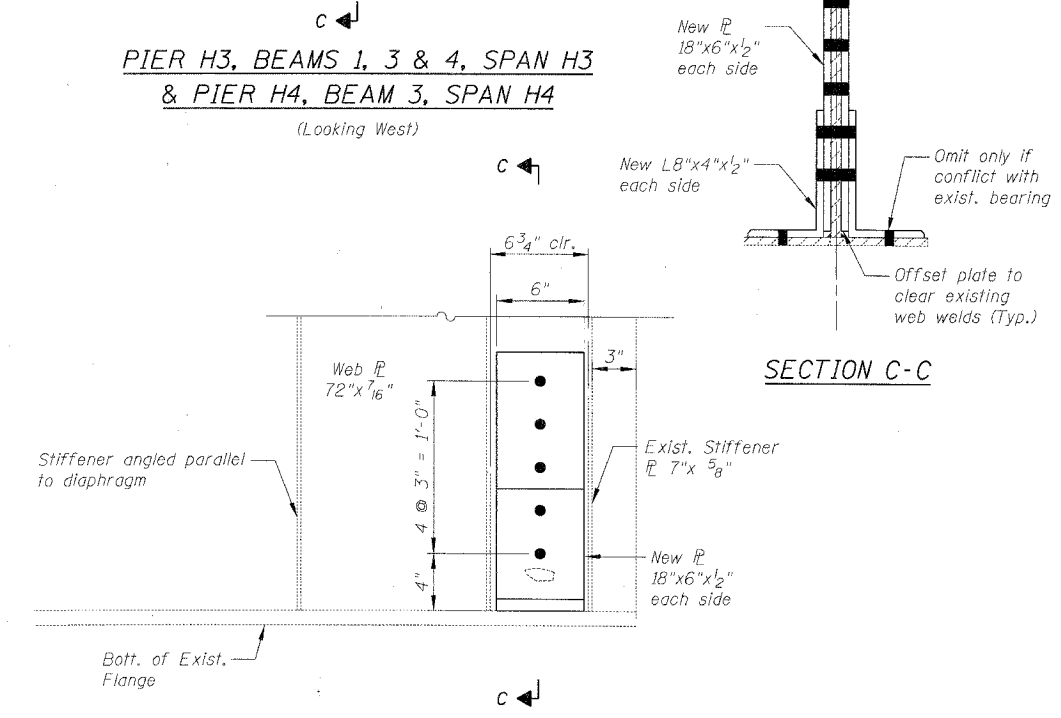
**TYPE C-1**  
(SN 016-1113, Piers D9 & C6)

- Notes:
- All new bolts for this Detail C (Types C-1 & C-3) repair work shall be 7/8"  $\phi$  H.S. bolts.
  - Shorten existing gusset plate to clear L leg as needed.
  - For locations where end cross frame is present on one side only (S.N. 1115, Span 21, Pier 21, Girder 1N, 4N, 5N & BN), new gusset plate shall be replaced on that side.

**DETAIL C END OF GIRDER REPAIR**



**PIER H3, BEAMS 1, 3 & 4, SPAN H3 & PIER H4, BEAM 3, SPAN H4**  
(Looking West)



**PIER H3, BEAM 2, SPAN H3**  
(Looking West)

**TYPE C-3**  
(SN 016-1118, Piers H3 & H4)

**BILL OF MATERIAL**

Item	Unit	Quantity
Structural Steel Repair	Pound	5,440

REVISIONS		ILLINOIS DEPARTMENT OF TRANSPORTATION F.A.I. 94/90 (DAN RYAN EXPRESSWAY) DAN RYAN ELEVATED BRIDGE BEARING REPLACEMENT & STEEL REPAIR STEEL REPAIRS - DETAIL C (1 of 2)
NAME	DATE	

SCALE: NTS  
DATE: 3/7/2008  
DRAWN BY: MTR  
CHECKED BY: BLU

**BOWMAN, BARRETT & ASSOCIATES INC.**  
CONSULTING ENGINEERS  
Chicago, Illinois  
312.228.0100  
www.bbainc.com

B-40-48 AM  
3/21/2008