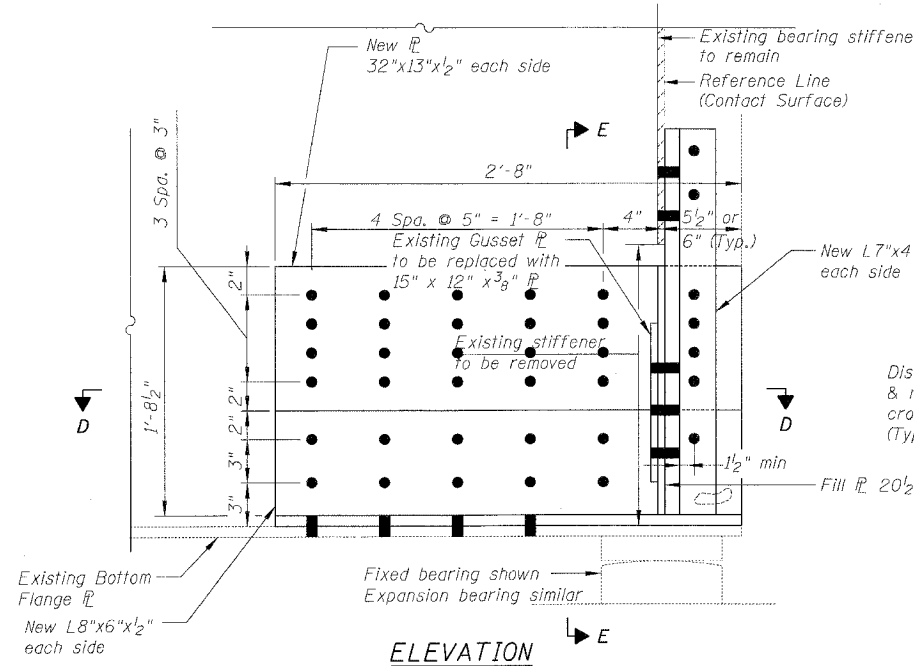
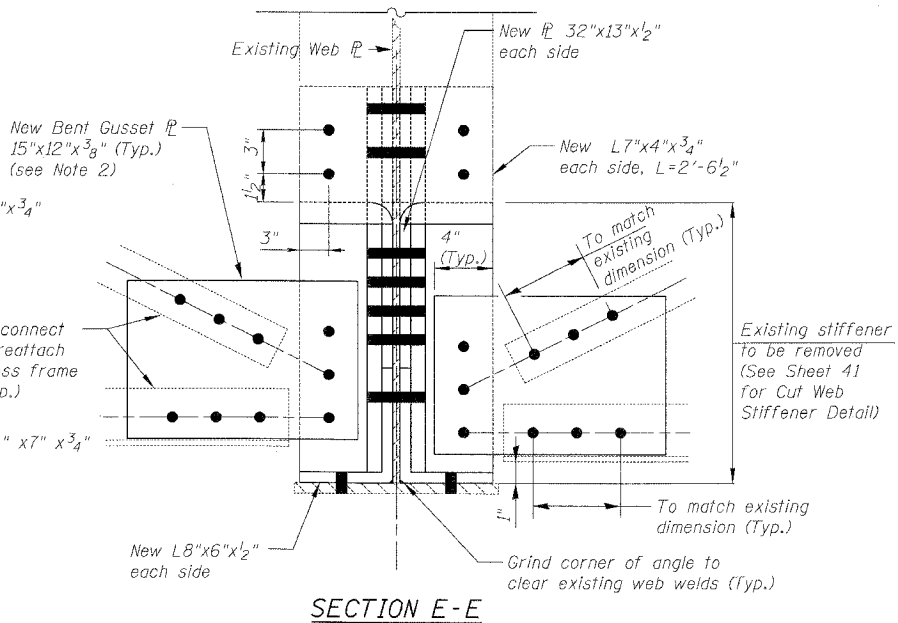


F.A.I.	SECTION	COUNTY	TOTAL SHEETS	SHEET NO.
94/90	2005-086 I	COOK	228	42
STA.	TO STA.			
FED. ROAD DIST. NO.	ILLINOIS	FED. AID PROJECT		

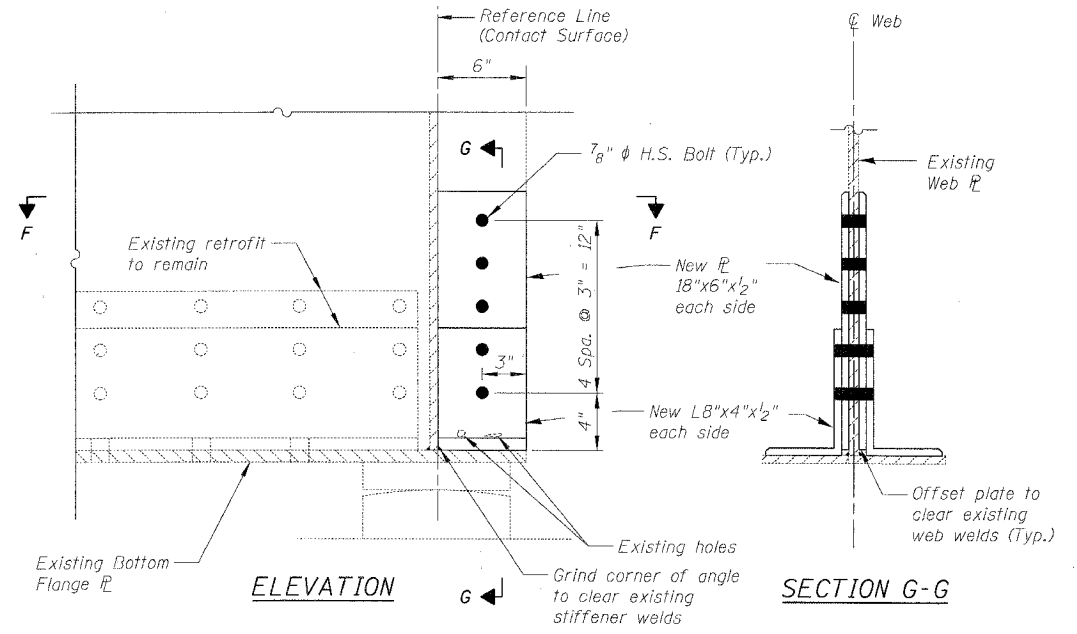
60B07



ELEVATION

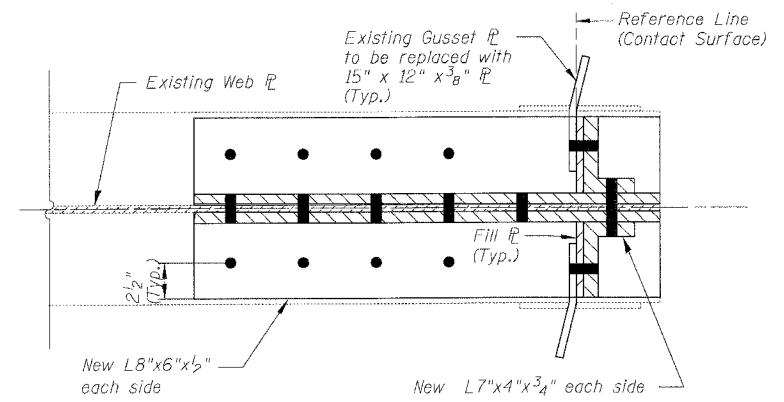


SECTION E-E

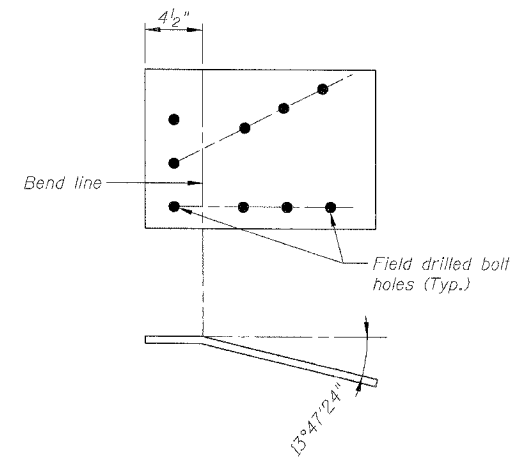


ELEVATION

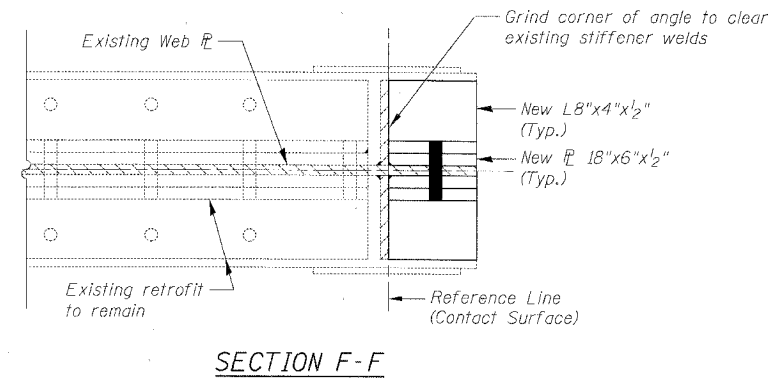
SECTION G-G



SECTION D-D



DETAIL OF BENT PLATES



SECTION F-F

TYPE C-2
(SN 016-1115, PIER 21)

TYPE C-3
(SN 016-1112 Pier 28)

- Notes:
- All new bolts for this Detail C (Types C-2 & C-3) repair work shall be 7/8" phi H.S. bolts.
 - For locations where end cross frame is present on one side only (S.N. 1115, Span 21, Pier 21, Girder 1N, 4N, 5N & 8N), new gusset plate shall be replaced on that side.

BOWMAN, BARRETT & ASSOCIATES INC.
CONSULTING ENGINEERS
Chicago, Illinois
312 228 0100
www.bbainc.com

DETAIL C END OF GIRDER REPAIR

REVISIONS		ILLINOIS DEPARTMENT OF TRANSPORTATION F.A.I. 94/90 (DAN RYAN EXPRESSWAY) DAN RYAN ELEVATED BRIDGE BEARING REPLACEMENT & STEEL REPAIR STEEL REPAIRS - DETAIL C (2 of 2) SCALE: NTS DATE: 3/7/2008	DRAWN BY: MTR CHECKED BY: BLU
NAME	DATE		

N:\6000\BRIDGE\PIER\SHEET\5662_21A_55303A.dwg 8/4/09 AM 3/21/2008