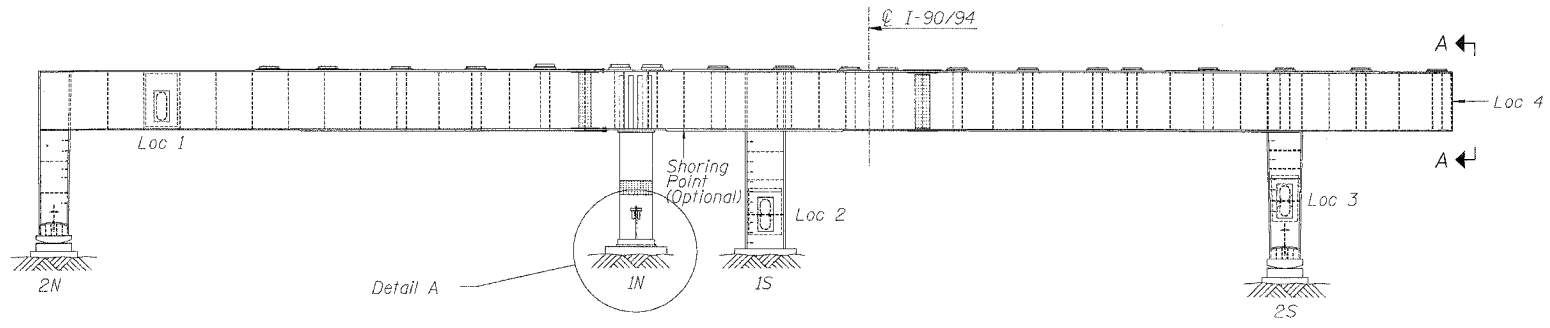
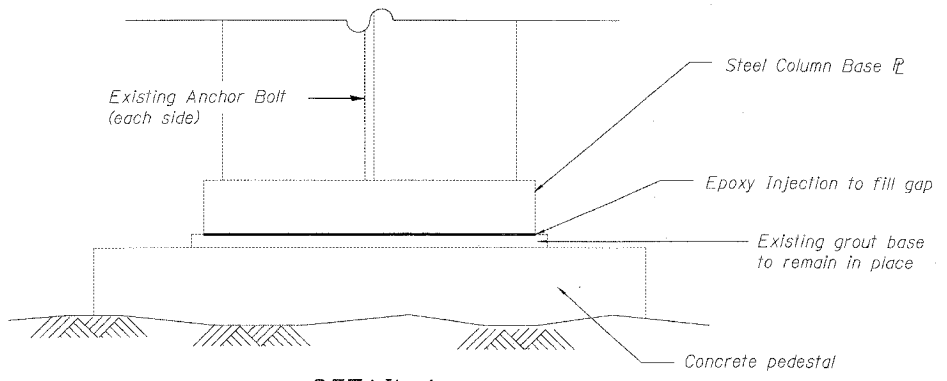


60B07



PIER 2 - WEST ELEVATION
(Looking East)



DETAIL A

NOTES

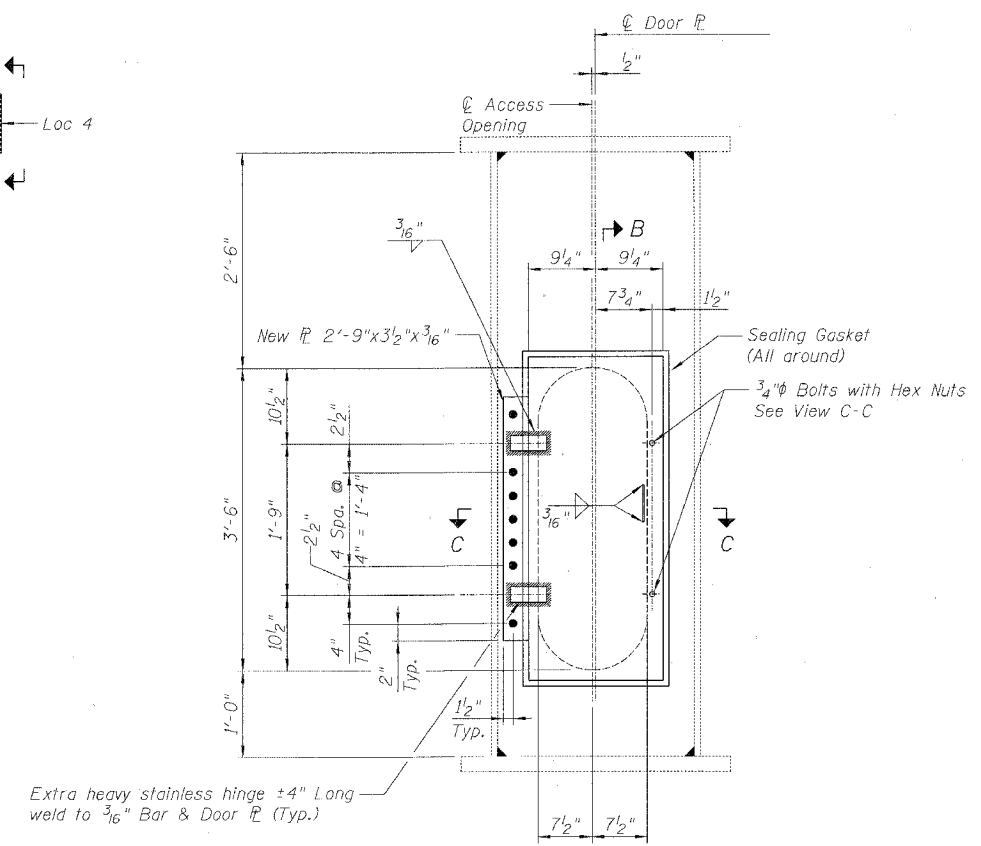
1. Epoxy shall be injected to fill entirely the gap between steel base plate and grout base. See Column Repair Special Provisions for injection operation details.
2. Temporary Shoring and Cribbing for epoxy injection is not required, but can be approved by the Engineer if quality control of injection is concerned. If approved, shoring points shall be at the location shown on the plan. The shoring tower shall be removed as soon as injection operation is completed. The cost shall be included in "Column Repair".
3. This repair work shall be completed during the overnight closure of middle 3 lanes on NB mainline at the time specified in Special Provisions (see Traffic Control Plans for details). Adjacent railroad yard ramp shall be maintained for traffic. Contractor shall coordinate with railroad yard for partial ramp closure.
4. Furnishing and operation of epoxy injection shall be paid by "Column Repair".

DETAIL G COLUMN BASE REPAIR

SN 016-1116, Pier 2
(1 Location)

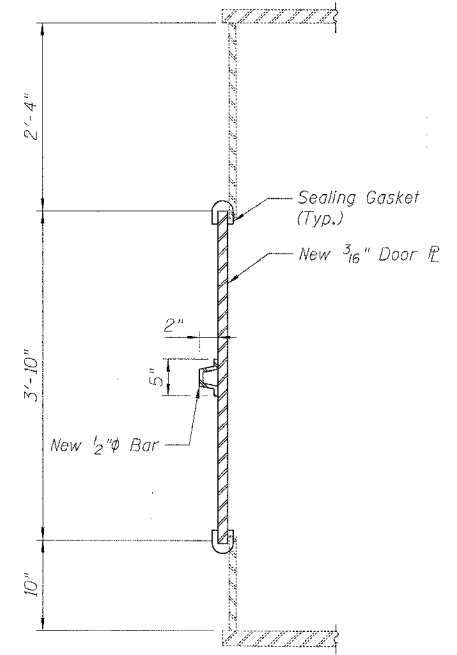
SUPPORTING REACTIONS & MINIMUM JACKING CAPACITY

S/N	Pier	(LL+I) (k)	Min. Jack. Capacity (k) (Each)
016-1116	2	640	480



VIEW A-A

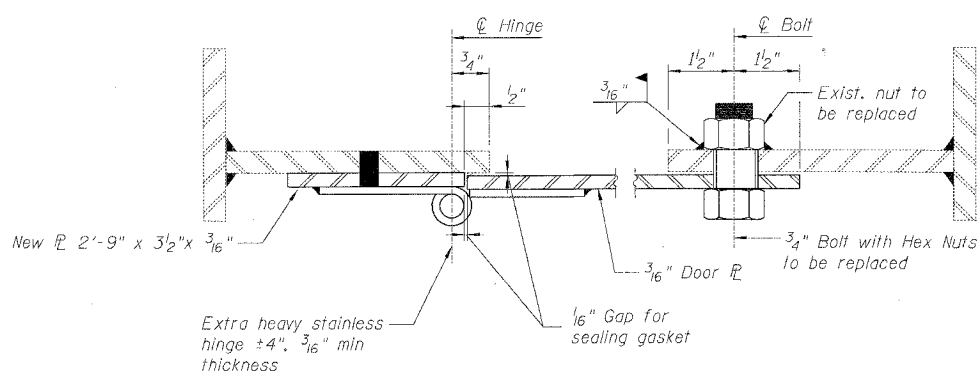
(Location 4 shown, Locations 1-3 similar)



VIEW B-B

NOTES

1. Stainless hinges and sealing gaskets furnished shall be approved by Engineer.
2. Cost of removing & disposal of existing access doors and assemblies, furnishing and erecting new doors and assemblies shall be included in "Structural Steel Repair".



VIEW C-C

DETAIL G-1 ACCESS DOOR REPLACEMENT

SN 016-1116, Pier 2
(4 Locations)

BILL OF MATERIAL

Item	Unit	Quantity
Structural Steel Repair	Pound	380
Column Repair	Lump Sum	1

REVISIONS	
NAME	DATE

ILLINOIS DEPARTMENT OF TRANSPORTATION
F.A.I. 94/90 (DAN RYAN EXPRESSWAY)
DAN RYAN ELEVATED BRIDGE
BEARING REPLACEMENT & STEEL REPAIR
STEEL REPAIRS - DETAIL G & G-1
SCALE: NTS
DATE: 3/7/2008
DRAWN BY: LAM
CHECKED BY: BLU

16600000 BRIDGE BEARING SHEET 5660-21A-55 R02.dwg 3/21/2008 8:02:55 AM