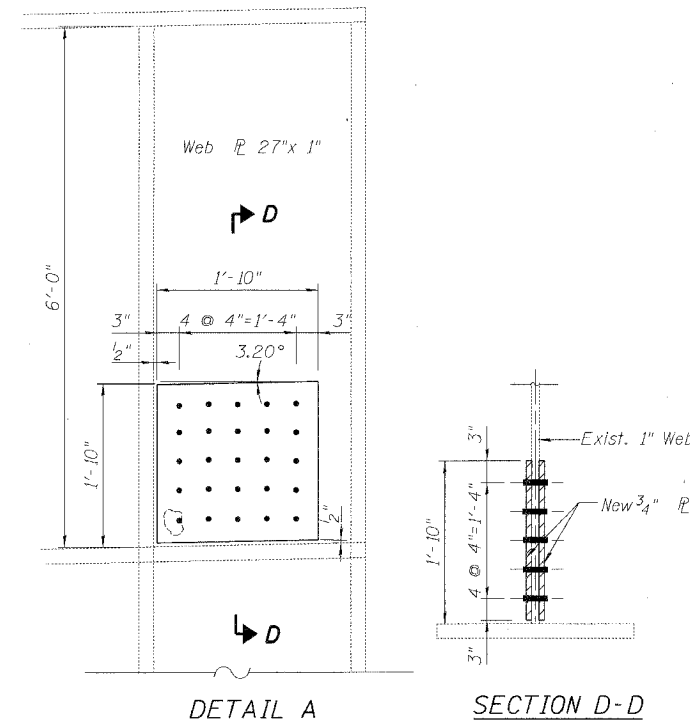
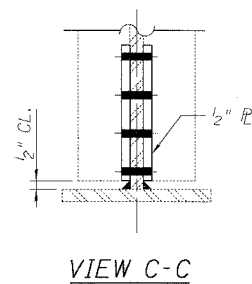


**S.N. 016-1112 - SPAN 26 SB, GIRDER 5S**  
(Looking East)



**SN 016-1067, PIER A5**  
(Top of East Column)

**DETAIL J - WEB REPAIRS**  
(SN 016-1112, SN 016-1067)

**BILL OF MATERIAL**

Item	Unit	Quantity
Structural Steel Repair	Pound	420

BOWMAN, BARRETT & ASSOCIATES INC.  
CONSULTING ENGINEERS  
Chicago, Illinois  
312.228.0100  
www.bbandainc.com



REVISIONS	
NAME	DATE

ILLINOIS DEPARTMENT OF TRANSPORTATION  
F.A.I. 94/90 (DAN RYAN EXPRESSWAY)  
DAN RYAN ELEVATED BRIDGE  
BEARING REPLACEMENT & STEEL REPAIR

**STEEL REPAIRS - DETAIL J**

SCALE: NTS      DRAWN BY: LAM  
DATE: 3/7/2008      CHECKED BY: BLU

M:\600\600\GIRDER\21A\SHEET\SHEET 560\_21A.LSS\607.dwg 3/27/2008 8:40:04 AM