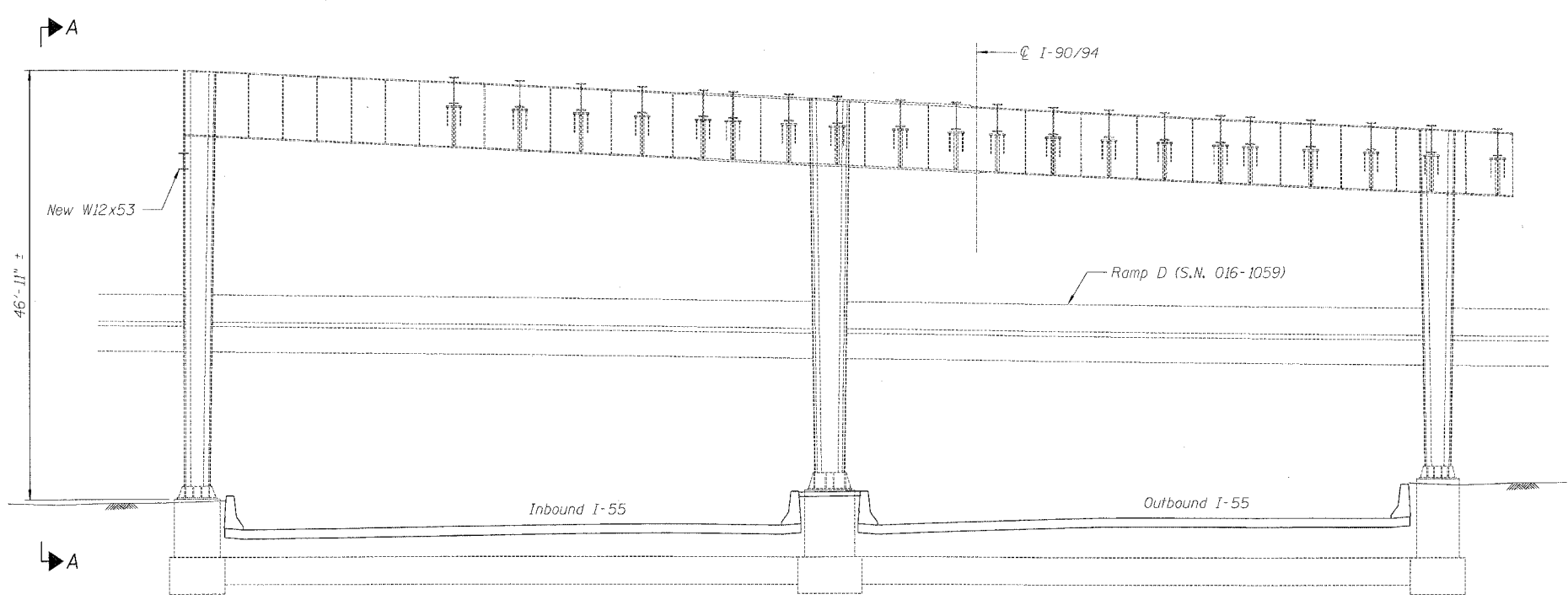
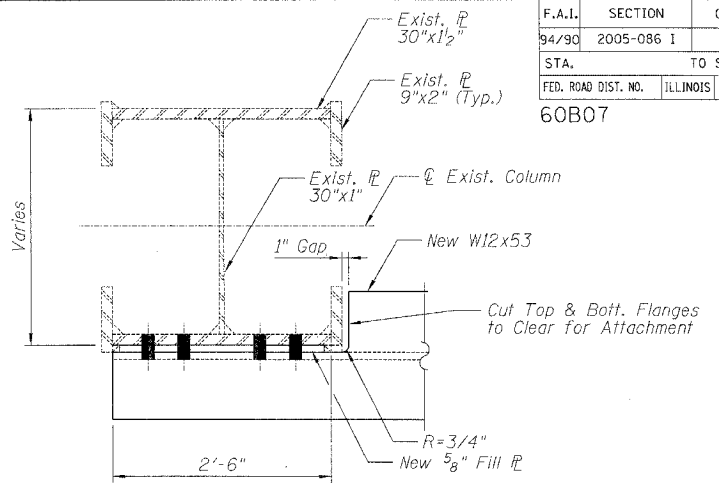


F.A.I.	SECTION	COUNTY	TOTAL SHEETS	SHEET NO.
94/90	2005-086 I	COOK	228	51
STA.	TO STA.			
FED. ROAD DIST. NO.	ILLINOIS	FED. AID PROJECT	60B07	

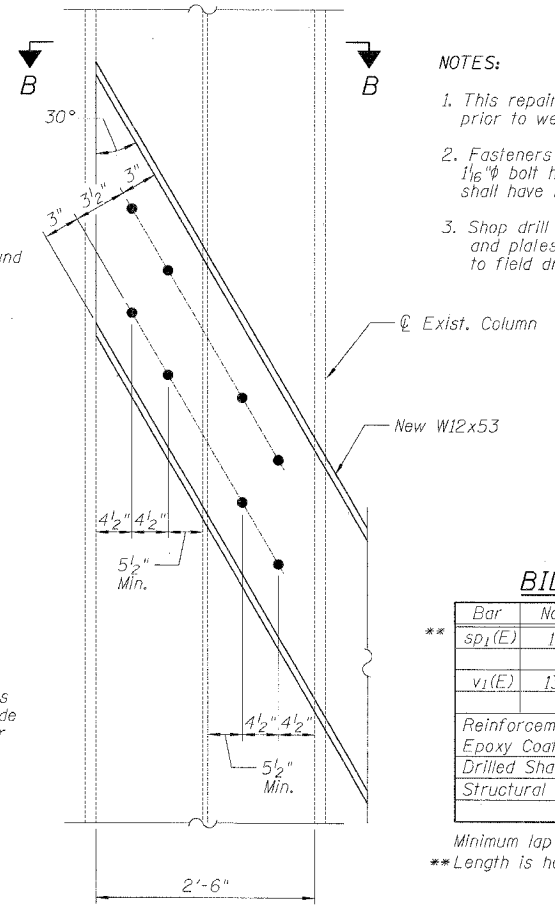


PIER 13 - ELEVATION
(Looking Upstation)



VIEW B-B

- NOTES:**
1. This repair work shall be completed prior to web repairs of Detail J (Sheet 46).
 2. Fasteners shall be 1" ϕ H.S. bolts with 1/6" ϕ bolt holes. 1/2" ϕ anchor bolts shall have 2" ϕ bolt holes.
 3. Shop drill bolt holes on new steel section and plates. Use shop drilled holes as template to field drill holes on existing column.

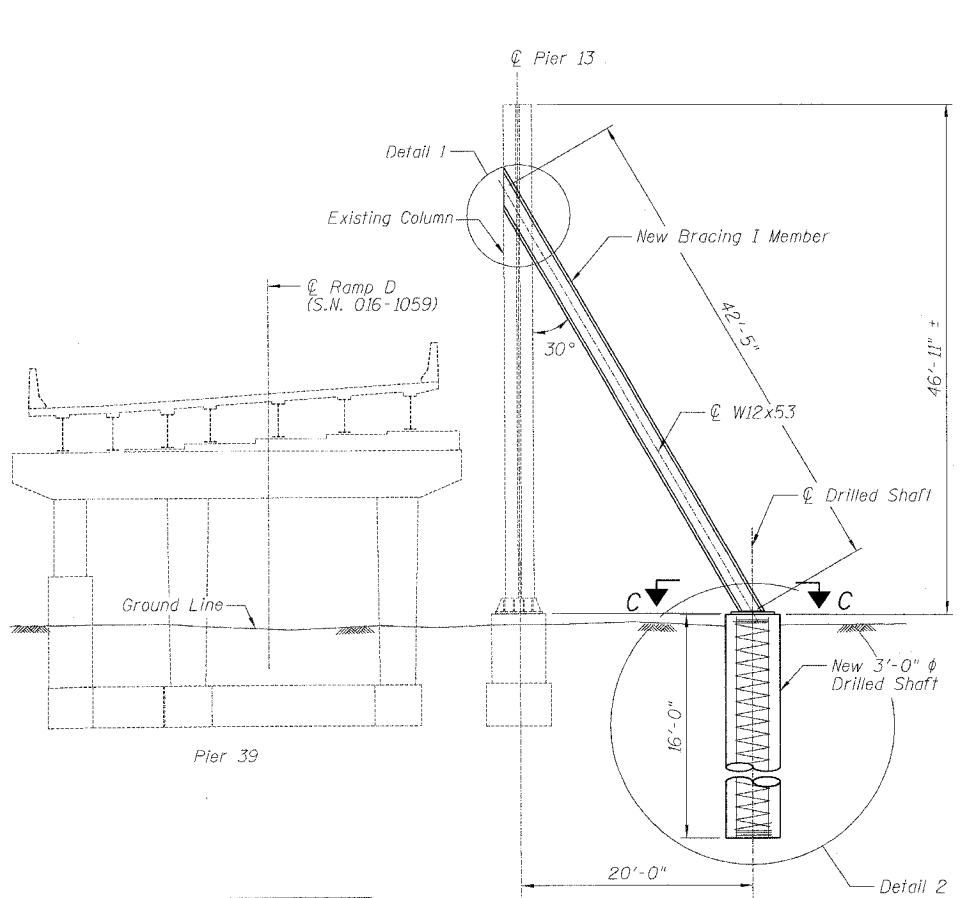


DETAIL 1

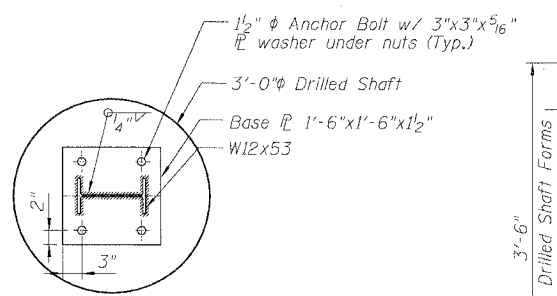
BILL OF MATERIAL

Bar	No.	Size	Length	Shape
sp1(E)	1	#5	13'-6"	~
v1(E)	13	#8	13'-6"	—
Reinforcement Bars, Epoxy Coated			Pound	990
Drilled Shaft in Soil			Cu. Yd.	4.2
Structural Steel Repair			Pound	2,750

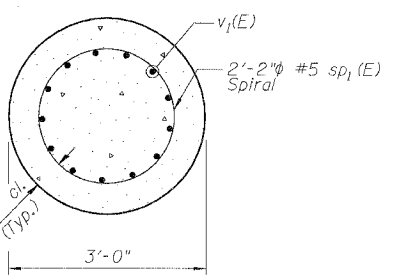
Minimum lap for spirals = 2'-2"
** Length is height of spiral.



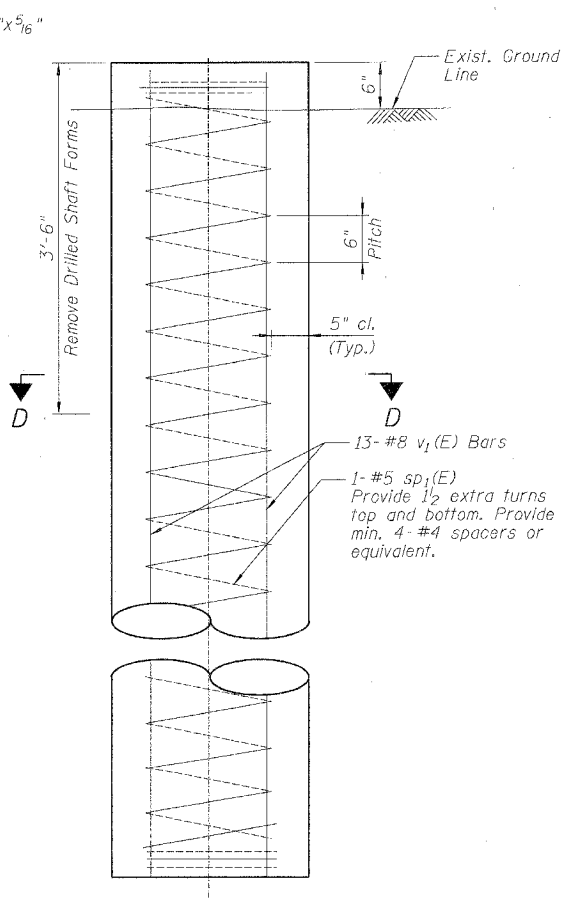
VIEW A-A



VIEW C-C



SECTION D-D



DETAIL 2

BOWMAN, BARRETT & ASSOCIATES INC.
CONSULTING ENGINEERS
Chicago, Illinois
312.228.0100
www.bbainc.com

REVISIONS	NAME	DATE

ILLINOIS DEPARTMENT OF TRANSPORTATION
F.A.I. 94/90 (DAN RYAN EXPRESSWAY)
DAN RYAN ELEVATED BRIDGE
BEARING REPLACEMENT & STEEL REPAIR
STEEL REPAIRS - DETAIL K (2 OF 2)
SCALE: NTS
DATE: 3/7/2008
DRAWN BY: MTR
CHECKED BY: BLU

3/21/2008 8:41:12 AM