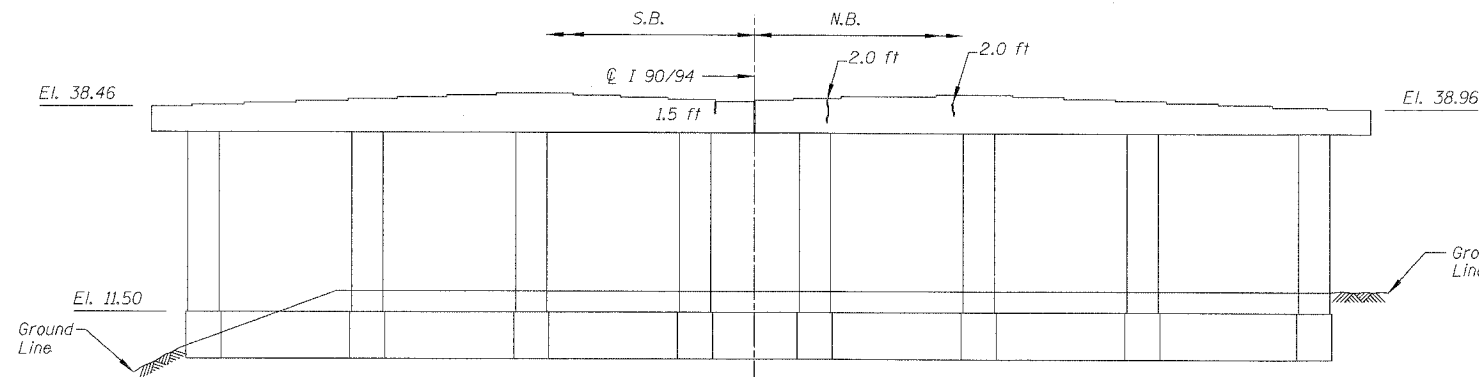
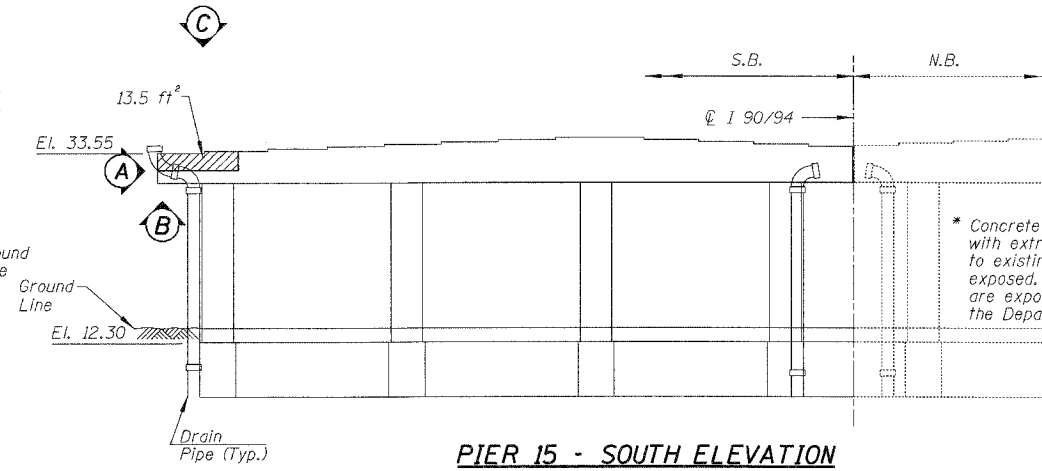


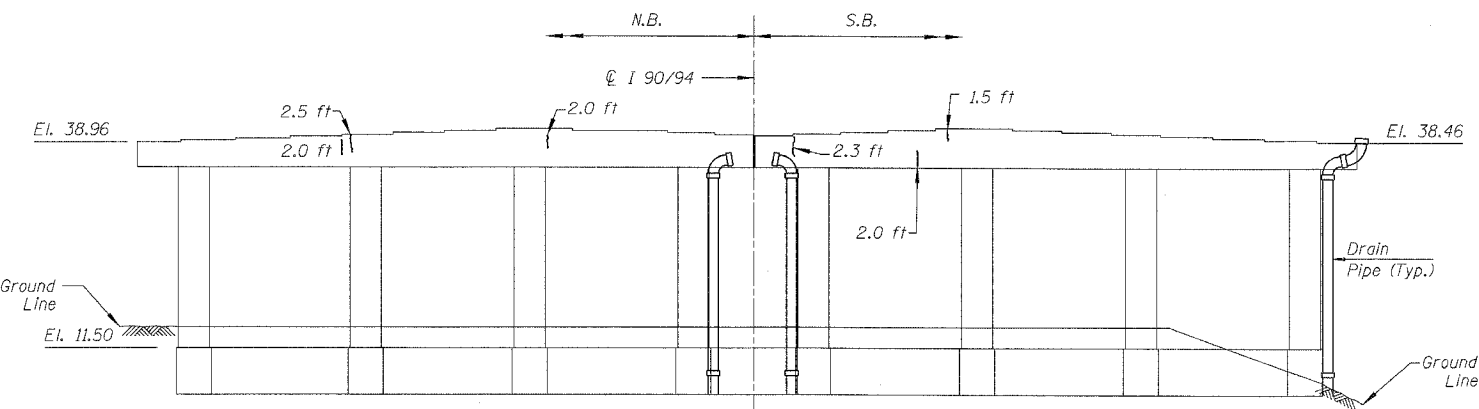
F.A.I.	SECTION	COUNTY	TOTAL SHEETS	SHEET NO.
94/90	2005-086 I	COOK	228	59
STA.		TO STA.		
FED. ROAD DIST. NO.		ILLINOIS	FED. AID PROJECT	
60B07				



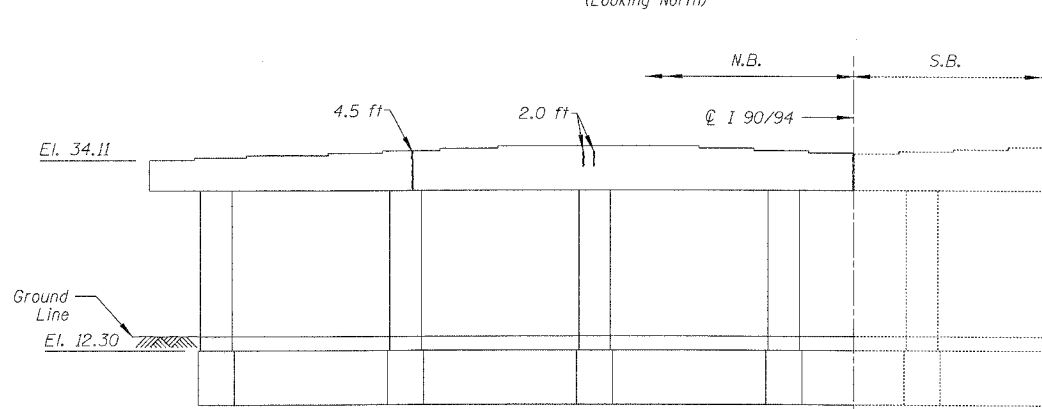
PIER 13 - SOUTH ELEVATION
(Looking North)



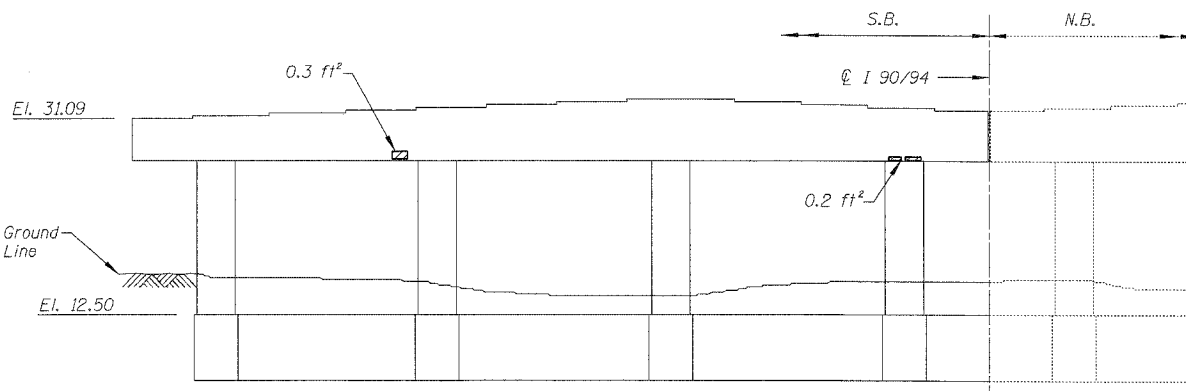
PIER 15 - SOUTH ELEVATION
(Looking North)



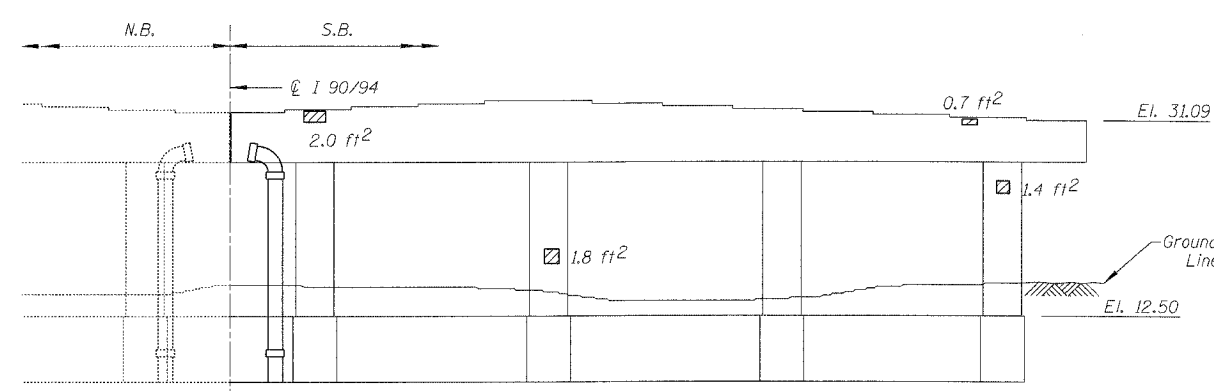
PIER 13 - NORTH ELEVATION
(Looking South)



PIER 15 - NORTH ELEVATION
(Looking South)



PIER 16 - SOUTH ELEVATION
(Looking North)

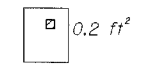


PIER 16 - NORTH ELEVATION
(Looking South)

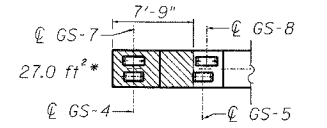
* Concrete shall be removed around existing bearings with extreme cautions. No damage shall be allowed to existing bearings, and no anchor bolts shall be exposed. If bearings are damaged or anchor bolts are exposed, they shall be replaced at no cost to the Department.



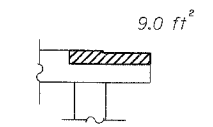
PIER 15 - VIEW A
Looking East at end of cap



PIER 15 - VIEW B
Looking up at bottom of cap



PIER 15 - VIEW C
Looking down at top of cap



PIER 15 - VIEW D
Looking south at west end of cap

BILL OF MATERIAL

ITEM	UNIT	QUANTITY
Structural Repair of Concrete (Depth equal to or less than 5")	SQ. FT.	59.2
Epoxy Crack Injection	FOOT	26.3

REVISIONS	
NAME	DATE

ILLINOIS DEPARTMENT OF TRANSPORTATION
F.A.I. 94/90 (DAN RYAN EXPRESSWAY)
DAN RYAN ELEVATED BRIDGE
BEARING REPLACEMENT & STEEL REPAIR
CONCRETE PIER REPAIRS
SN 016-0137, PIERS 13,15,16
SCALE: NTS
DATE: 5/18/2007
DRAWN BY: LAM
CHECKED BY: BLU

BOWMAN, BARRETT & ASSOCIATES INC.
CONSULTING ENGINEERS
Chicago, Illinois
312.228.0100
www.bbainc.com

For Notes and Legend See Sheet 6

5/25/2007 4:43:37 PM