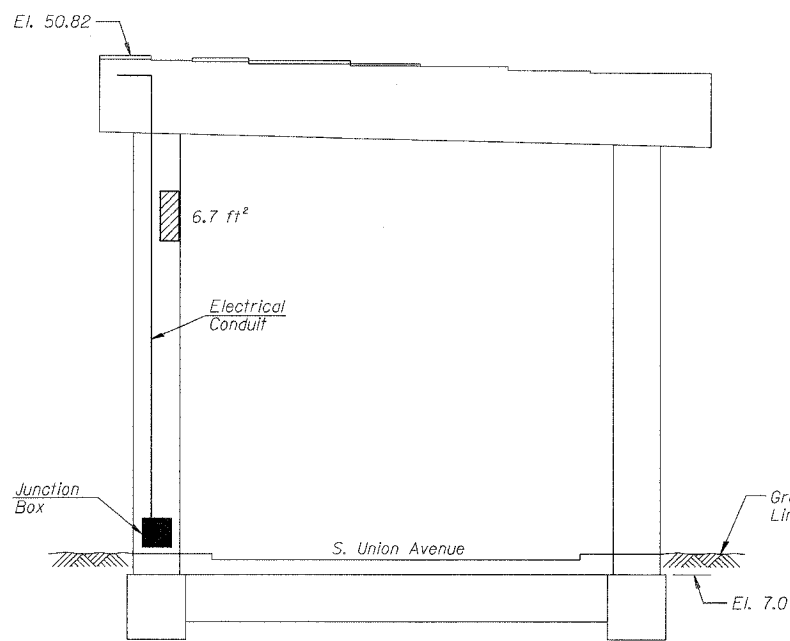
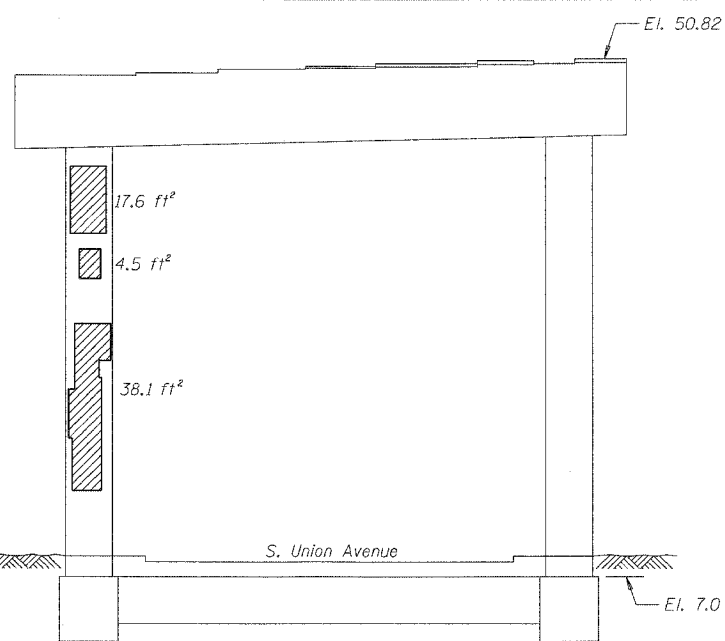


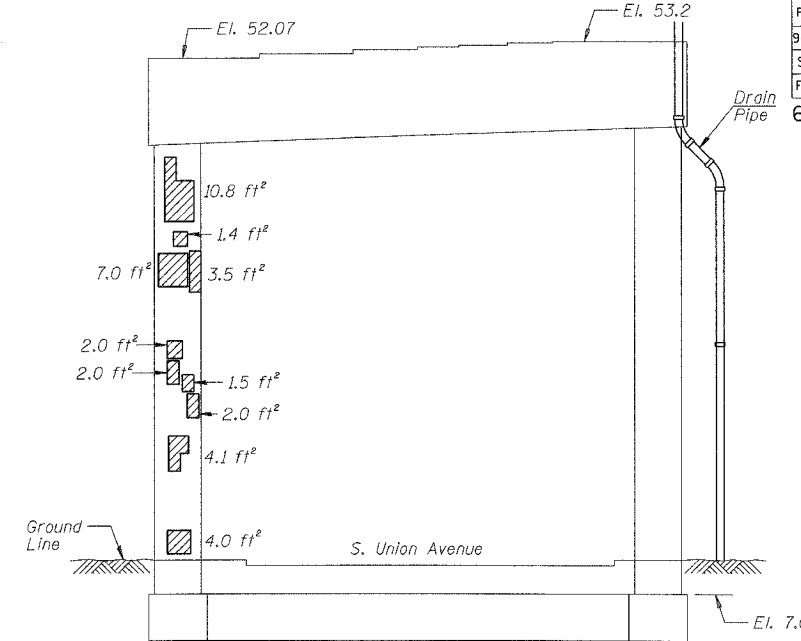
F.A.I.	SECTION	COUNTY	TOTAL SHEETS	SHEET NO.
94/90	2005-086 I	COOK	228	78
STA.		TO STA.		
FED. ROAD DIST. NO.		ILLINOIS	FED. AID PROJECT	
60B07				



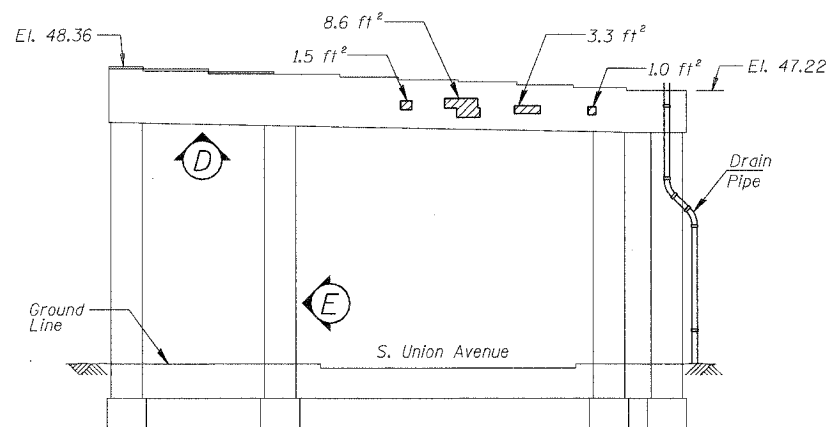
PIER C-4 - SOUTH ELEVATION
(Looking North)



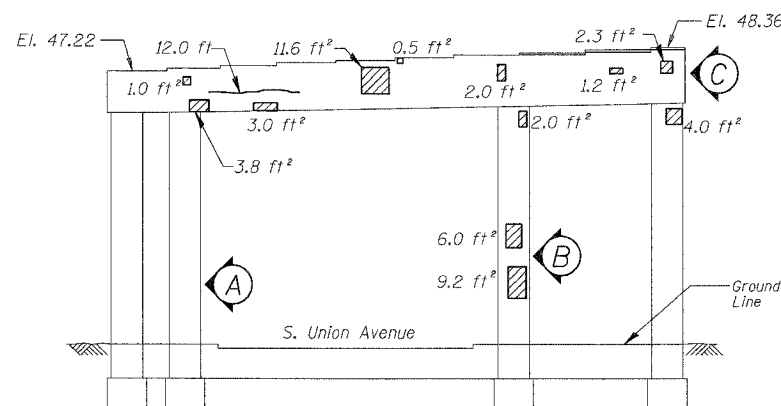
PIER C-4 - NORTH ELEVATION
(Looking South)



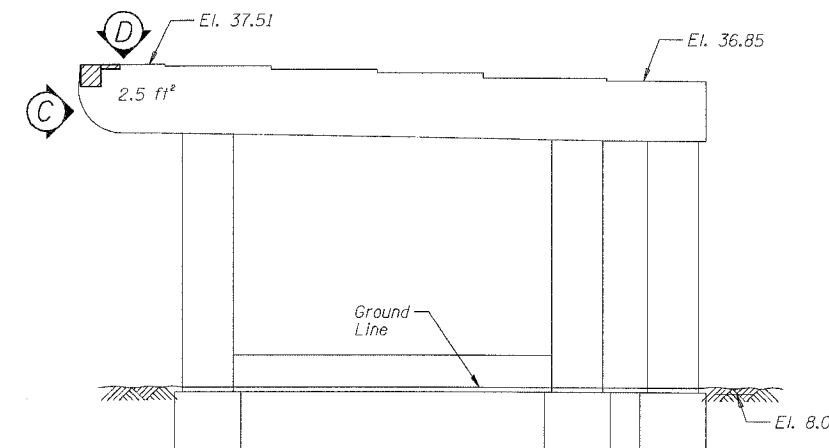
PIER C-3 - NORTH ELEVATION
(Looking South)



PIER C-5 - SOUTH ELEVATION
(Looking North)



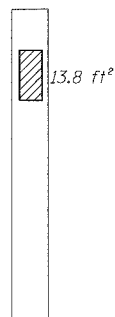
PIER C-5 - NORTH ELEVATION
(Looking South)



PIER C-11 - SOUTH ELEVATION
(Looking North)



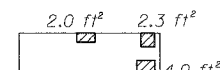
PIER C-5 - VIEW A
Looking East at side of column



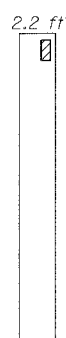
PIER C-5 - VIEW B
Looking East at side of column



PIER C-5 - VIEW C
Looking East at end of cap



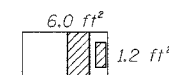
PIER C-5 - VIEW D
Looking up at bottom of cap



PIER C-5 - VIEW E
Looking West at side of column



PIER C-11 - VIEW C
Looking East at end of cap



PIER C-11 - VIEW D
Looking down at top of seat

BILL OF MATERIAL

ITEM	UNIT	QUANTITY
Structural Repair of Concrete (Depth equal to or less than 5")	SQ. FT.	218.0
Structural Repair of Concrete (Depth greater than 5")	SQ. FT.	3.0
Epoxy Crack Injection	FOOT	12.0

REVISIONS		ILLINOIS DEPARTMENT OF TRANSPORTATION F.A.I. 94/90 (DAN RYAN EXPRESSWAY) DAN RYAN ELEVATED BRIDGE BEARING REPLACEMENT & STEEL REPAIR CONCRETE PIER REPAIRS SN 016-1113, PIERS C-3,C-4,C-5,C-11 SCALE: NTS DATE: 5/18/2007
NAME	DATE	
		DRAWN BY: LAM CHECKED BY: BLU

For Notes and Legend See Sheet 6

BOWMAN, BARRETT & ASSOCIATES INC.
CONSULTING ENGINEERS
Chicago, Illinois
312.228.0100
www.bbainc.com



5/24/2007 4:55:45 PM