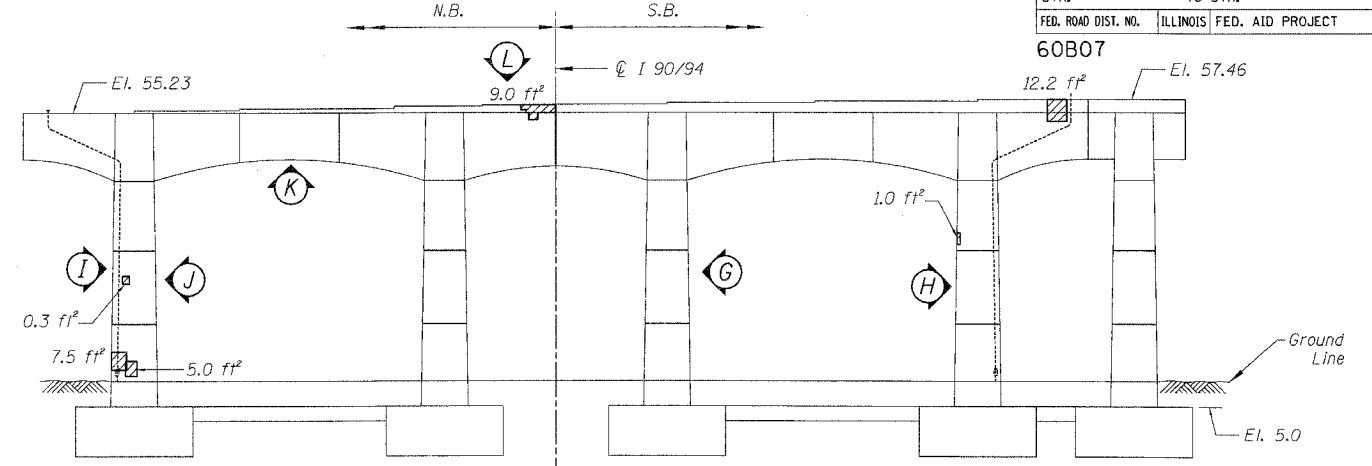
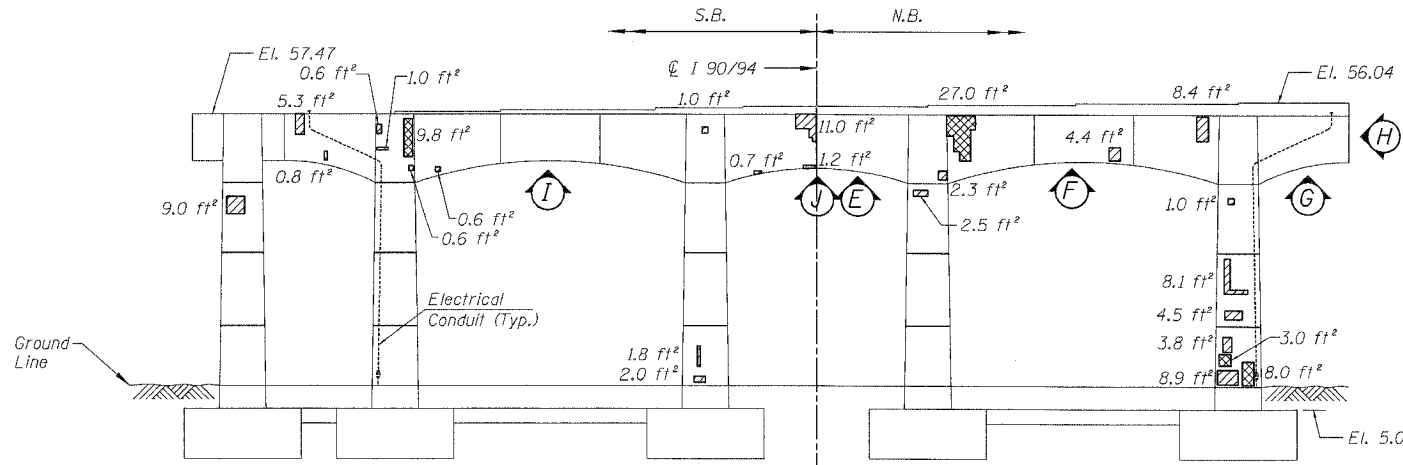


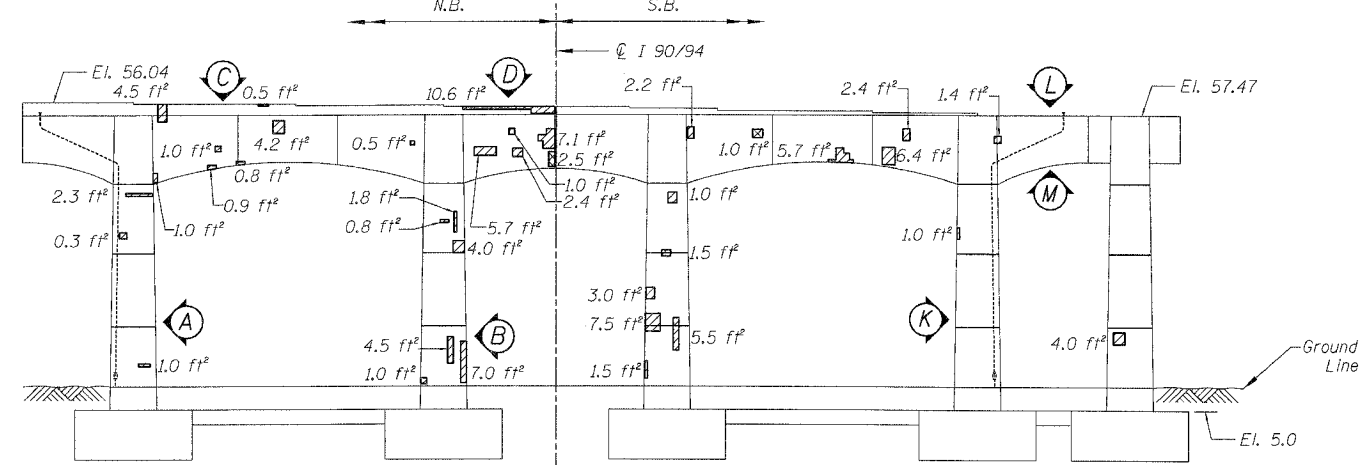
PIER 1 - SOUTH ELEVATION
(Looking North)



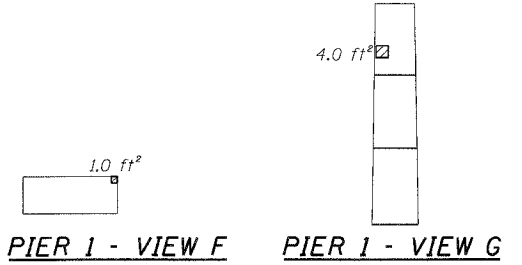
PIER 1 - NORTH ELEVATION
(Looking South)



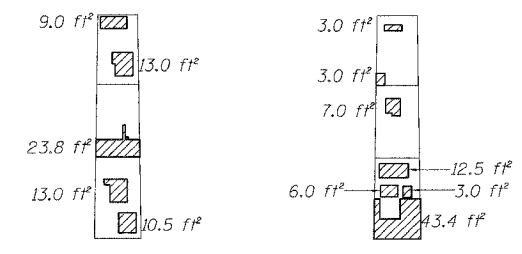
PIER 2 - SOUTH ELEVATION
(Looking North)



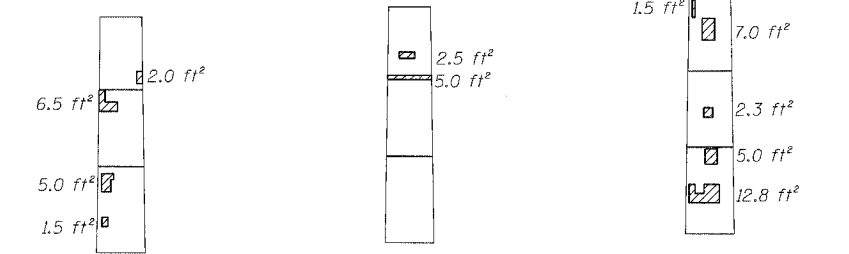
PIER 2 - NORTH ELEVATION
(Looking South)



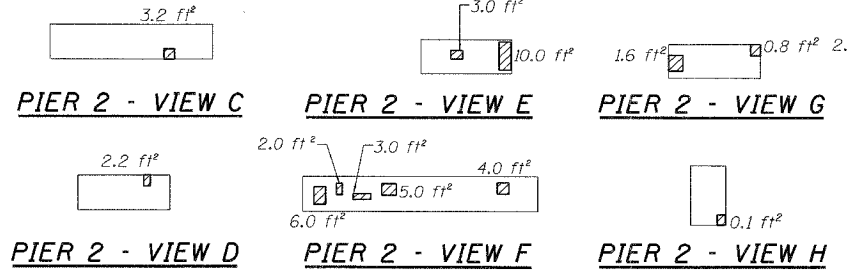
PIER 1 - VIEW F **PIER 1 - VIEW G**



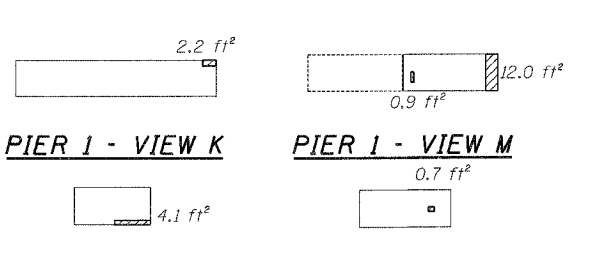
PIER 2 - VIEW A **PIER 2 - VIEW B**



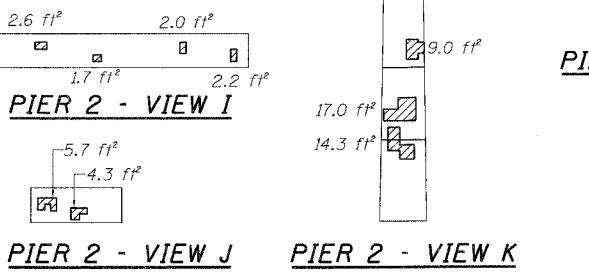
PIER 1 - VIEW H **PIER 1 - VIEW I** **PIER 1 - VIEW J**



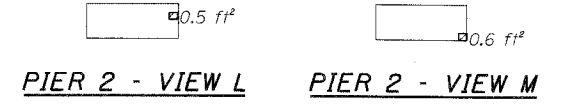
PIER 2 - VIEW C **PIER 2 - VIEW D** **PIER 2 - VIEW E** **PIER 2 - VIEW F**



PIER 1 - VIEW K **PIER 1 - VIEW L** **PIER 1 - VIEW M** **PIER 1 - VIEW N**



PIER 2 - VIEW G **PIER 2 - VIEW H** **PIER 2 - VIEW I** **PIER 2 - VIEW J** **PIER 2 - VIEW K**



PIER 2 - VIEW L **PIER 2 - VIEW M**

BILL OF MATERIAL

| ITEM | UNIT | QUANTITY |
|--|---------|----------|
| Structural Repair of Concrete (Depth equal to or less than 5") | SQ. FT. | 578.6 |
| Structural Repair of Concrete (Depth greater than 5") | SQ. FT. | 54.6 |

For Notes and Legend See Sheet 6

| REVISIONS | | ILLINOIS DEPARTMENT OF TRANSPORTATION F.A.I. 94/90 (DAN RYAN EXPRESSWAY) DAN RYAN ELEVATED BRIDGE BEARING REPLACEMENT & STEEL REPAIR CONCRETE PIER REPAIRS SN 016-1114, PIERS 1&2 |
|-----------|------|--|
| NAME | DATE | |
| | | SCALE: NTS DATE: 5/18/2007 DRAWN BY: LAM CHECKED BY: BLU |
| | | |
| | | |
| | | |
| | | |