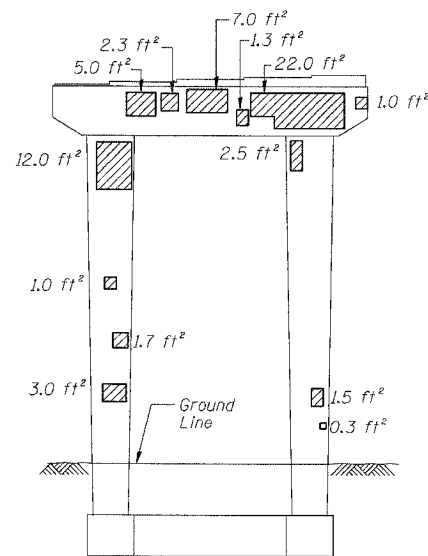
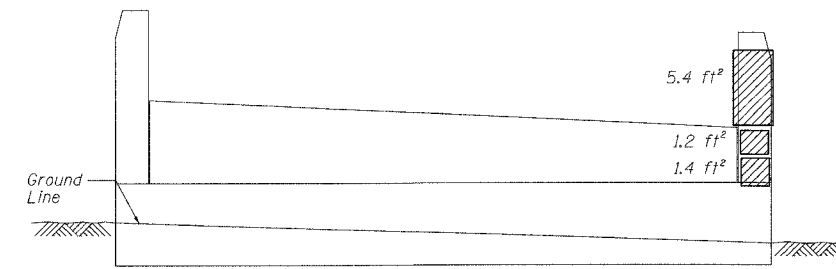


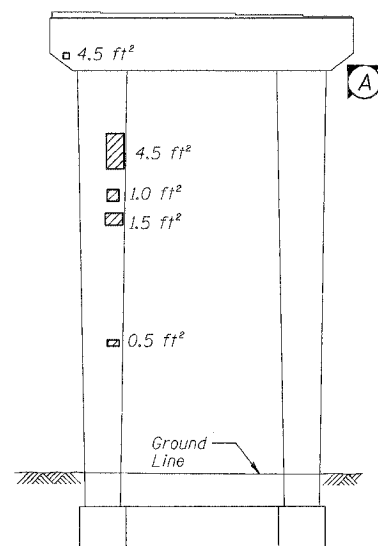
PIER 78 - SOUTH ELEVATION
(Looking North)



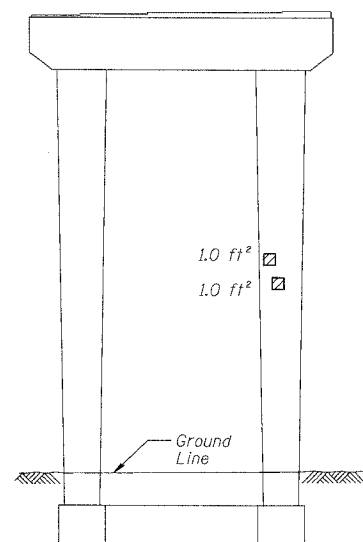
PIER 78 - NORTH ELEVATION
(Looking South)



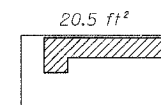
ABUTMENT 73 - EAST ELEVATION
(Looking West)



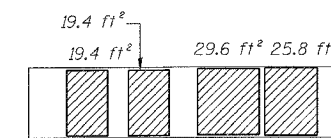
PIER 77 - SOUTH ELEVATION
(Looking North)



PIER 77 - NORTH ELEVATION
(Looking South)



PIER 78 - VIEW A
Looking up at bottom of cap



PIER 78 - VIEW B
Looking down at top of cap



PIER 77 - VIEW A
Looking up at bottom of cap

BILL OF MATERIAL

ITEM	UNIT	QUANTITY
Structural Repair of Concrete (Depth equal to or less than 5")	SQ. FT.	197.8

REVISIONS	
NAME	DATE

ILLINOIS DEPARTMENT OF TRANSPORTATION
F.A.I. 94/90 (DAN RYAN EXPRESSWAY)
DAN RYAN ELEVATED BRIDGE
BEARING REPLACEMENT & STEEL REPAIR
CONCRETE PIER REPAIRS
SN 016-1050, PIERS 77,78, ABUT. 73
SCALE: NTS
DATE: 5/18/2007
DRAWN BY: LAM
CHECKED BY: BLU