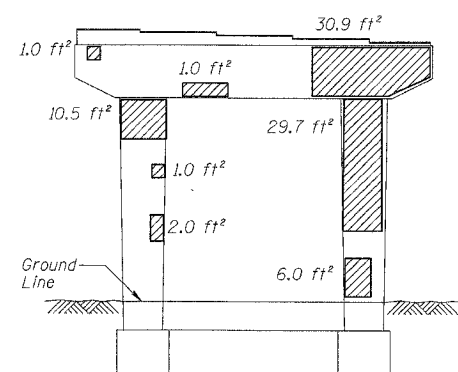
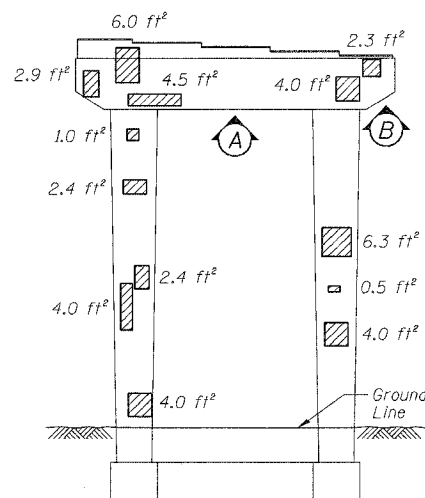


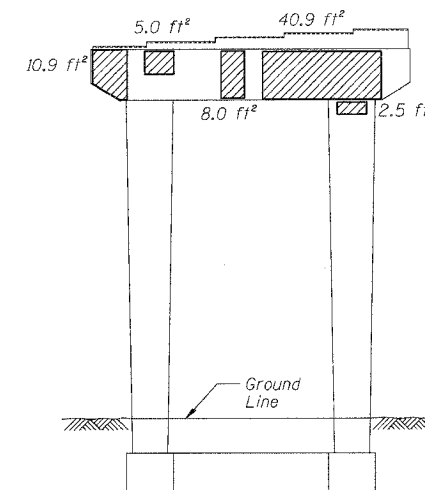
PIER 86 - WEST ELEVATION
(Looking East)



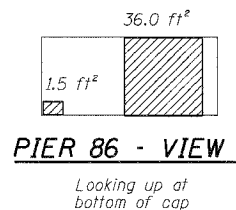
PIER 86 - EAST ELEVATION
(Looking West)



PIER 83 - SOUTH ELEVATION
(Looking North)



PIER 83 - NORTH ELEVATION
(Looking South)



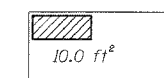
PIER 86 - VIEW A

Looking up at bottom of cap



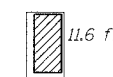
PIER 85 - VIEW A

Looking up at bottom of cap



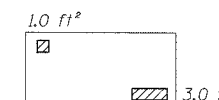
PIER 83 - VIEW A

Looking up at bottom of cap



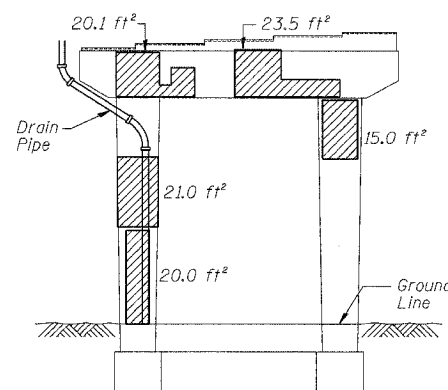
PIER 83 - VIEW B

Looking up at bottom of cap

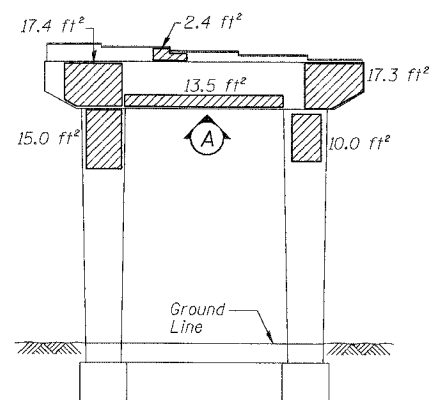


PIER 82 - VIEW A

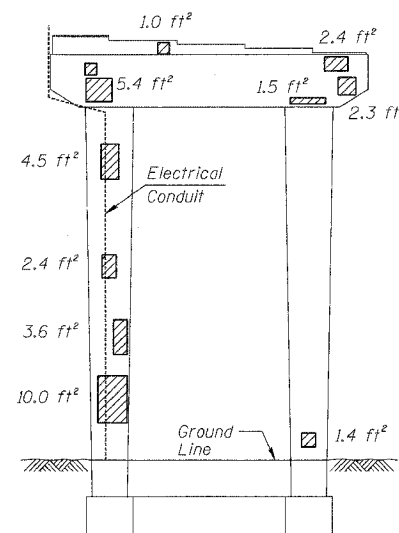
Looking up at bottom of cap



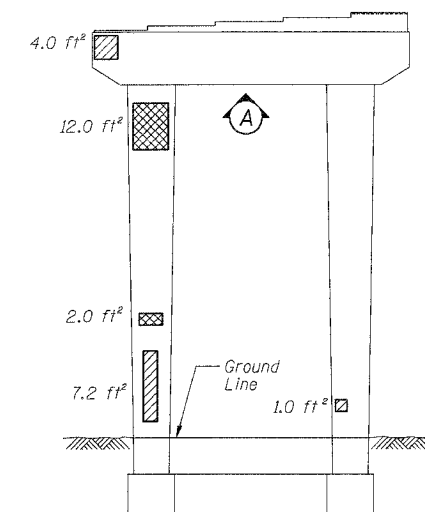
PIER 85 - WEST ELEVATION
(Looking East)



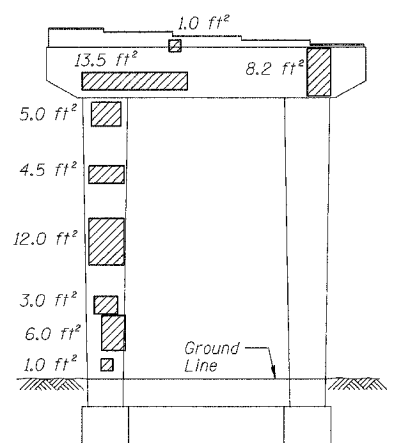
PIER 85 - EAST ELEVATION
(Looking West)



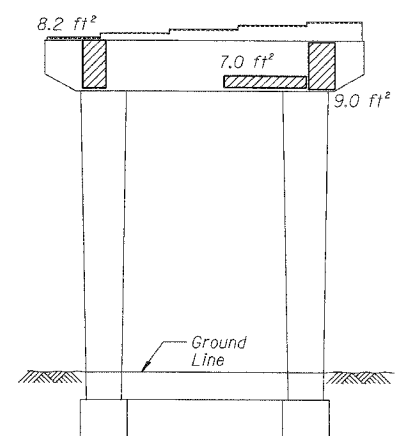
PIER 82 - SOUTH ELEVATION
(Looking North)



PIER 82 - NORTH ELEVATION
(Looking South)



PIER 84 - SOUTH ELEVATION
(Looking North)



PIER 84 - NORTH ELEVATION
(Looking South)

BILL OF MATERIAL

ITEM	UNIT	QUANTITY
Structural Repair of Concrete (Depth equal to or less than 5")	SQ. FT.	665.2
Structural Repair of Concrete (Depth greater than 5")	SQ. FT.	14.0
Temporary Shoring and Crippling	EACH	1

REVISIONS		ILLINOIS DEPARTMENT OF TRANSPORTATION F.A.I. 94/90 (DAN RYAN EXPRESSWAY) DAN RYAN ELEVATED BRIDGE BEARING REPLACEMENT & STEEL REPAIR CONCRETE PIER REPAIRS SN 016-1050, PIERS 82-86
NAME	DATE	

SCALE: NTS
DATE: 5/18/2007
DRAWN BY: LAM
CHECKED BY: BLU