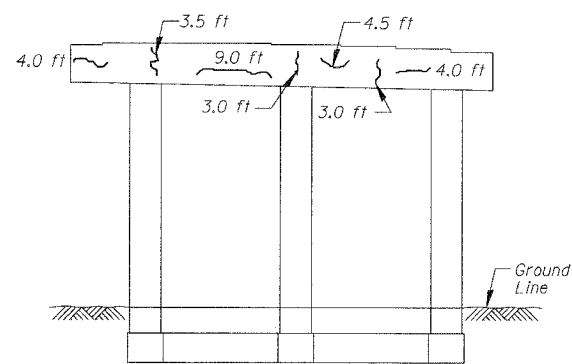
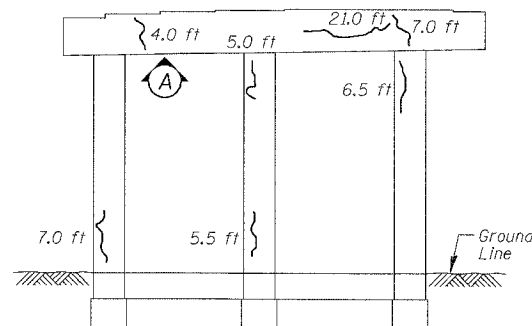


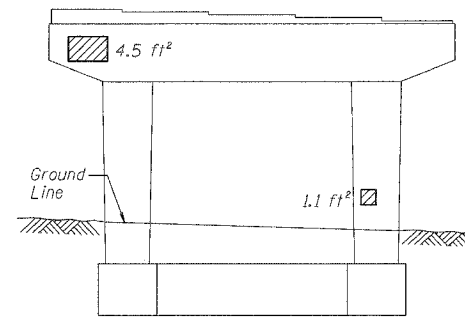
F.A.I.	SECTION	COUNTY	TOTAL SHEETS	SHEET NO.
94/90	2005-086 I	COOK	228	108
STA.	TO STA.			
FED. ROAD DIST. NO.	ILLINOIS	FED. AID PROJECT		
60B07				



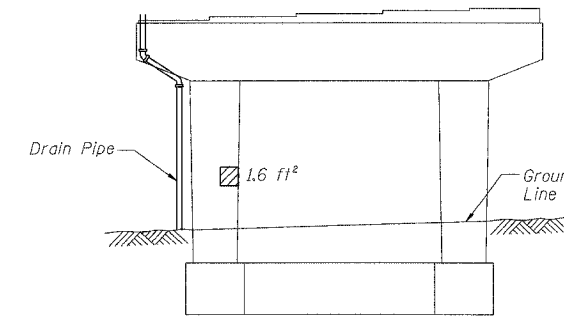
**PIER 22 - SOUTH ELEVATION**  
(Looking North)



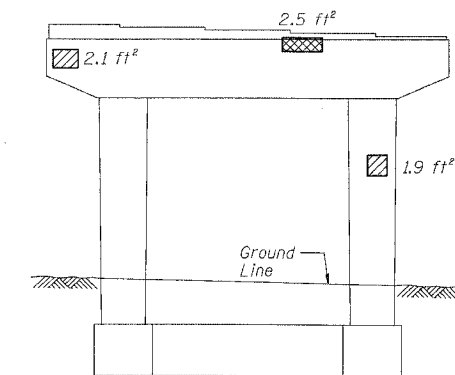
**PIER 22 - NORTH ELEVATION**  
(Looking South)



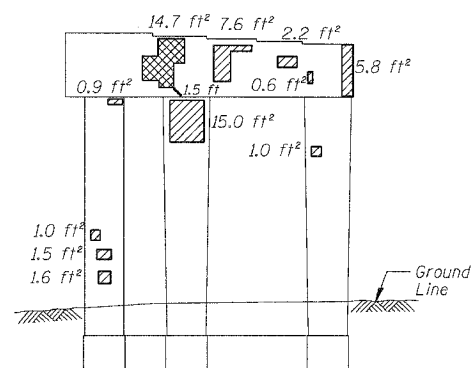
**PIER 27 - SOUTH ELEVATION**  
(Looking North)



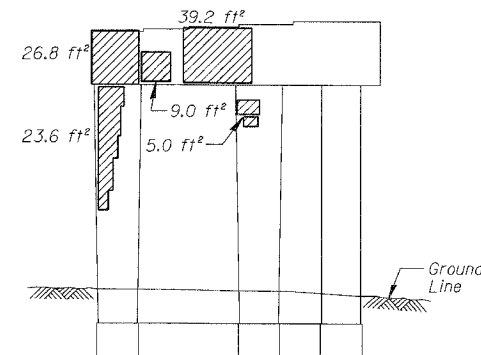
**PIER 27 - NORTH ELEVATION**  
(Looking South)



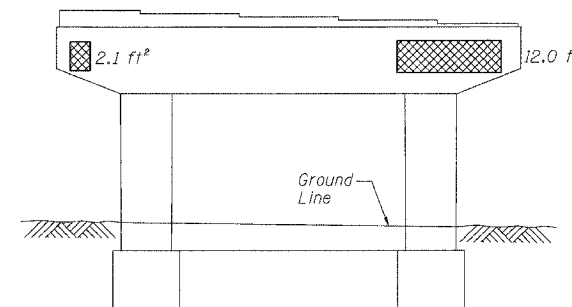
**PIER 26 - SOUTH ELEVATION**  
(Looking North)



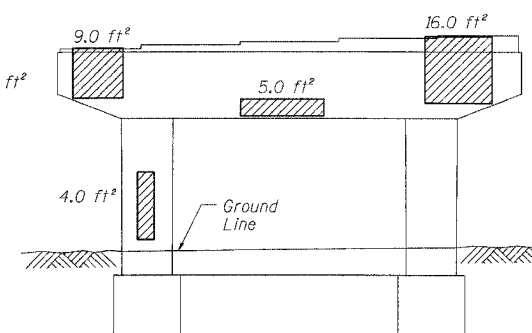
**PIER 23 - SOUTH ELEVATION**  
(Looking North)



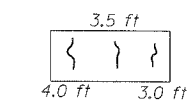
**PIER 23 - NORTH ELEVATION**  
(Looking South)



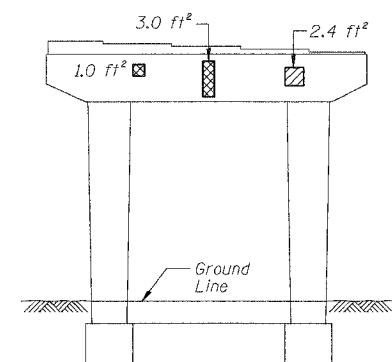
**PIER 28 - SOUTH ELEVATION**  
(Looking North)



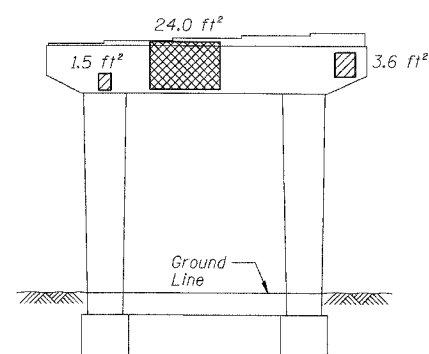
**PIER 28 - NORTH ELEVATION**  
(Looking South)



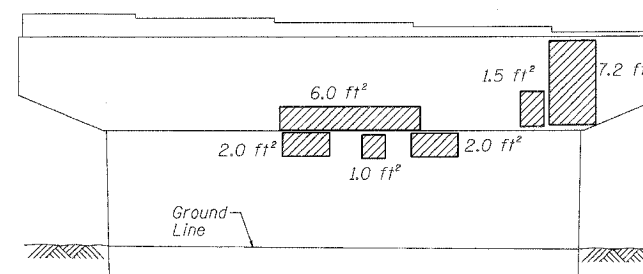
**PIER 22 - VIEW A**  
Looking up at bottom of cap



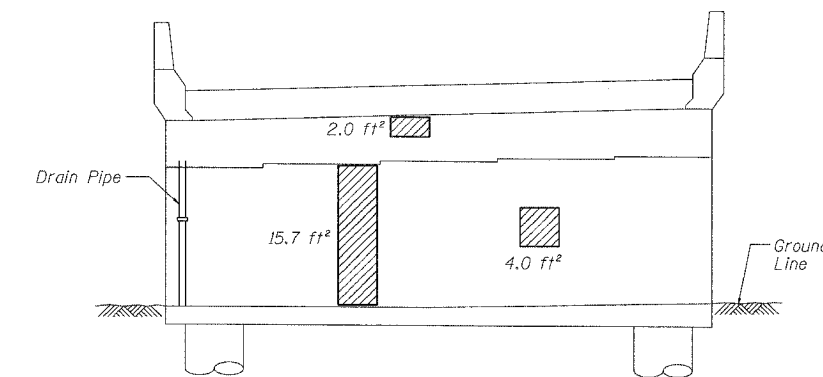
**PIER 25 - SOUTH ELEVATION**  
(Looking North)



**PIER 25 - NORTH ELEVATION**  
(Looking South)



**PIER 29 - SOUTH ELEVATION**  
(Looking North)



**ABUTMENT 30 - NORTH ELEVATION**  
(Looking South)

**BILL OF MATERIAL**

ITEM	UNIT	QUANTITY
Structural Repair of Concrete (Depth equal to or less than 5")	SQ. FT.	234.9
Structural Repair of Concrete (Depth greater than 5")	SQ. FT.	59.3
Epoxy Crack Injection	FOOT	97.5

REVISIONS	
NAME	DATE

ILLINOIS DEPARTMENT OF TRANSPORTATION  
F.A.I. 94/90 (DAN RYAN EXPRESSWAY)  
DAN RYAN ELEVATED BRIDGE  
BEARING REPLACEMENT & STEEL REPAIR  
CONCRETE PIER REPAIRS  
SN 016-1047, PIERS 22,23,25-29, ABUT 30  
SCALE: NTS  
DATE: 5/18/2007  
DRAWN BY: LAM  
CHECKED BY: BLU

BOWMAN, BARRETT & ASSOCIATES INC.  
CONSULTING ENGINEERS  
Chicago, Illinois  
312.228.0100  
www.bbainc.com

For Notes and Legend See Sheet 6

5/24/2007 5:00:27 PM