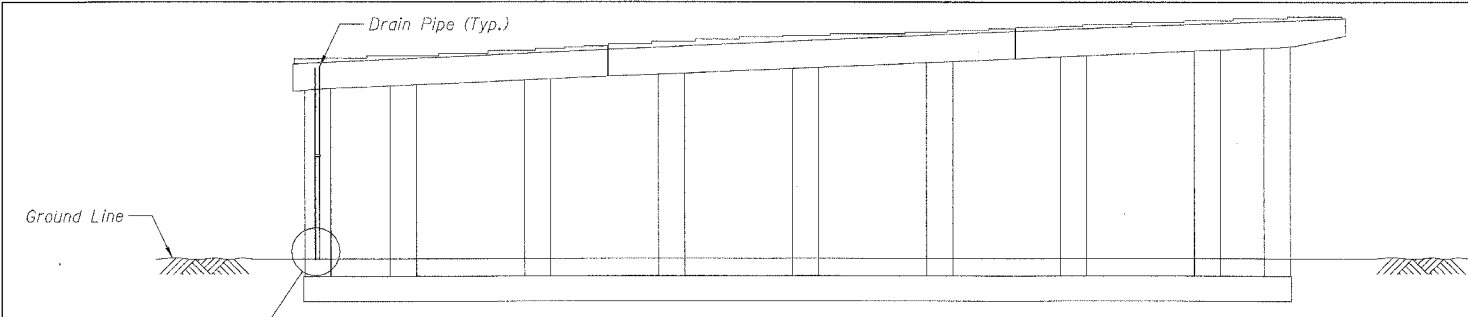


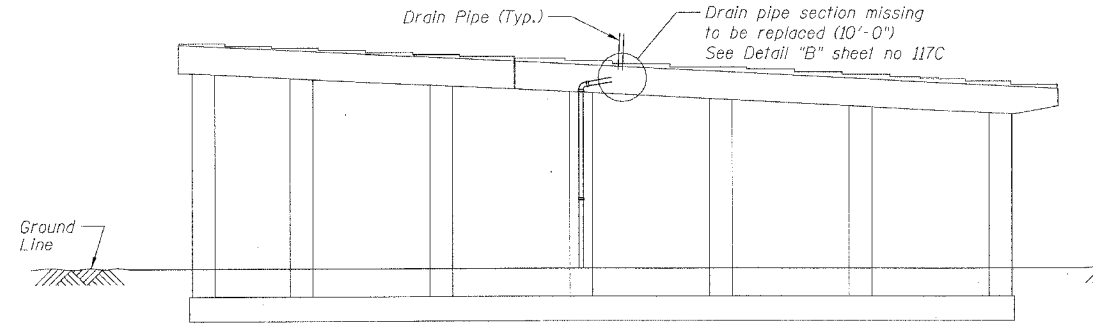
F.A.I.	SECTION	COUNTY	TOTAL SHEETS	SHEET NO.
94/90	2005-086 I	COOK	228	117
STA.	TO STA.			
FED. ROAD DIST. NO.	ILLINOIS	FED. AID PROJECT		

60B07



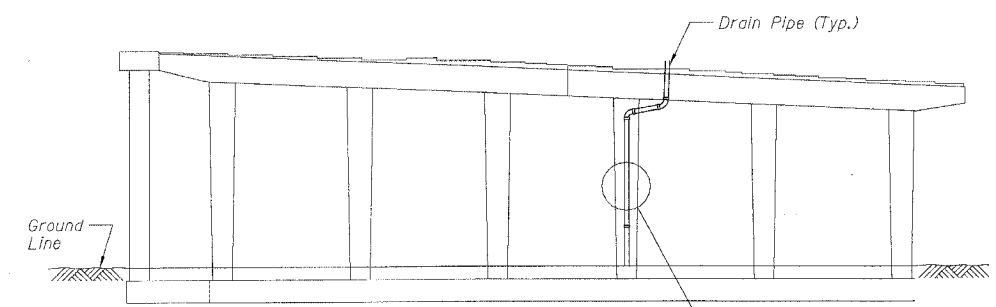
SN 016-1117 - PIER 18 - SOUTH ELEVATION
(Looking North)

Drain pipe section broken to be replaced (3'-0")
See Section A-A sheet no 117C



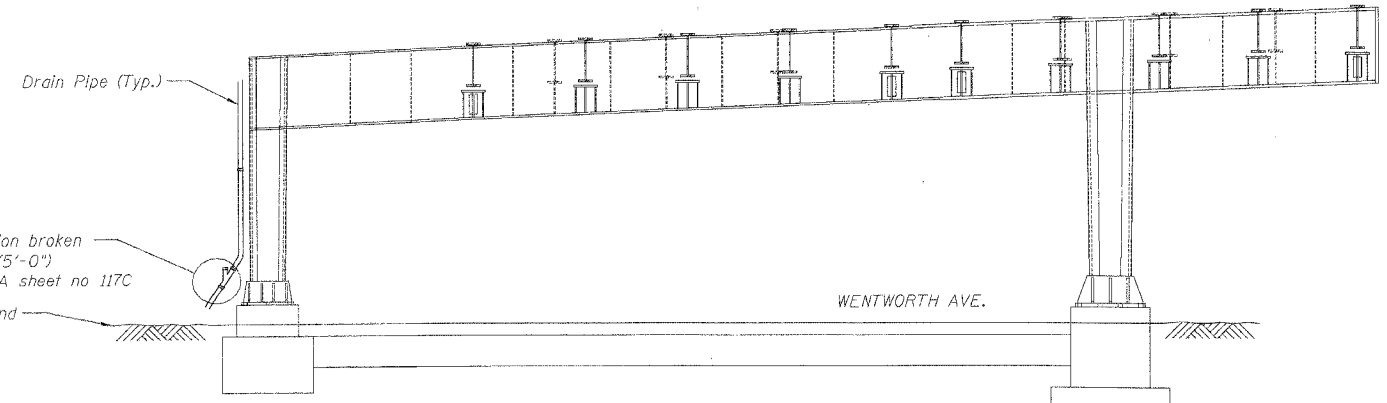
SN 016-1117 - PIER 16 - NORTH ELEVATION
(Looking South)

Drain pipe section missing to be replaced (10'-0")
See Detail "B" sheet no 117C



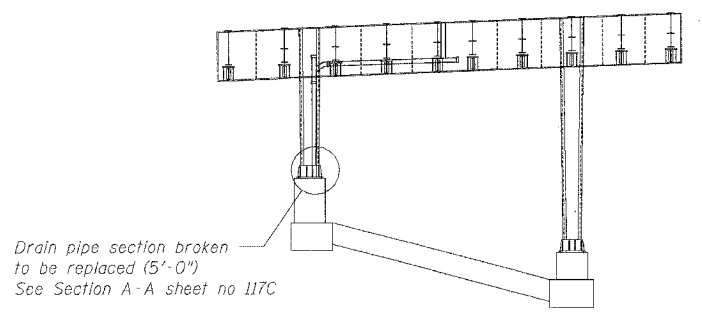
SN 016-1117 - PIER 15 - NORTH ELEVATION
(Looking South)

Drain pipe section missing to be replaced (3'-0")
See Section B-B sheet no 117C



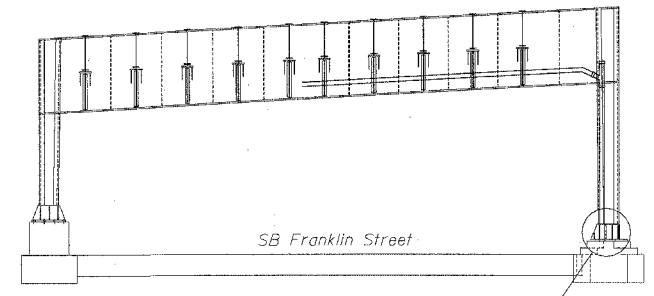
SN 016-1117 - PIER 6 - SOUTH ELEVATION
(Looking North)

Drain pipe section broken to be replaced (5'-0")
See Section A-A sheet no 117C



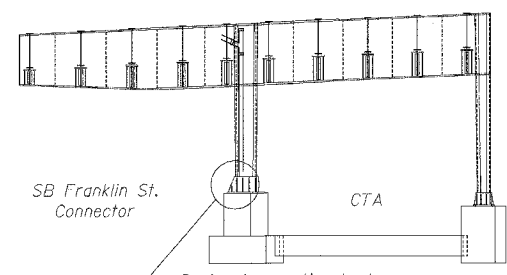
SN 016-1117 - PIER 5 - SOUTH ELEVATION
(Looking North)

Drain pipe section broken to be replaced (5'-0")
See Section A-A sheet no 117C



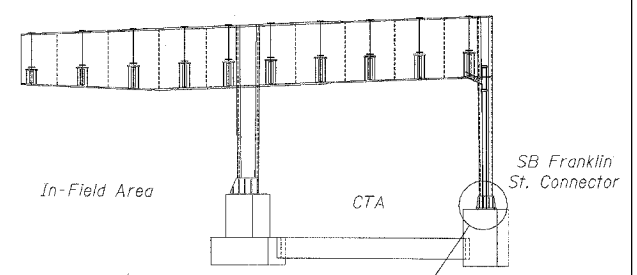
SN 016-1117 - PIER 2 - SOUTH ELEVATION
(Looking North)

Drain pipe section broken to be replaced (5'-0"), groundwork may be required. See Section A-A sheet no 117C. See sheet no 117C for downspout protection



SN 016-1117 - PIER 3 - SOUTH ELEVATION
(Looking North)

Drain pipe section broken to be replaced (5'-0"), groundwork may be required. See Section A-A sheet no 117C. See sheet no 117C for downspout protection



SN 016-1117 - PIER 2 - SOUTH ELEVATION
(Looking North)

Drain pipe section broken to be replaced (7'-0"), groundwork may be required. See Section A-A sheet no 117C. See sheet no 117C for downspout protection

BILL OF MATERIAL

ITEM DESCRIPTION	UNIT	QUANTITY
Bridge Drainage System Repairs	FOOT	43

- Notes:
- See Drainage Repair Notes on sheet 111
 - For pier locations see General Plan & Elevation Sheets.

REVISIONS	DATE

ILLINOIS DEPARTMENT OF TRANSPORTATION
F.A.I. 94/90 (DAN RYAN EXPRESSWAY)
DAN RYAN ELEVATED BRIDGE
BEARING REPLACEMENT & STEEL REPAIR
DRAINAGE REPAIRS
SN 016-1117

SCALE: NTS
DATE: 3/7/2008
DRAWN BY: LAM
CHECKED BY: BLU

BOWMAN, BARRETT & ASSOCIATES INC.
CONSULTING ENGINEERS
Chicago, Illinois
312.228.0100
www.bbandainc.com

W:\660\cadd\BRIDGE\21A\SHEETS\660_21A_117.dwg 3/27/2008 8:43:36 AM