

Remove and replace in-kind bituminous or concrete paving and excavate as required to remove and replace damaged section of pipes.

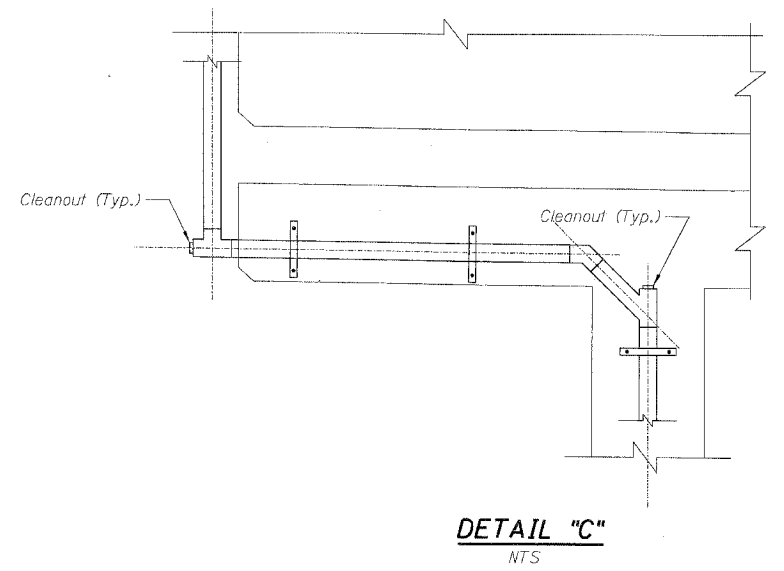
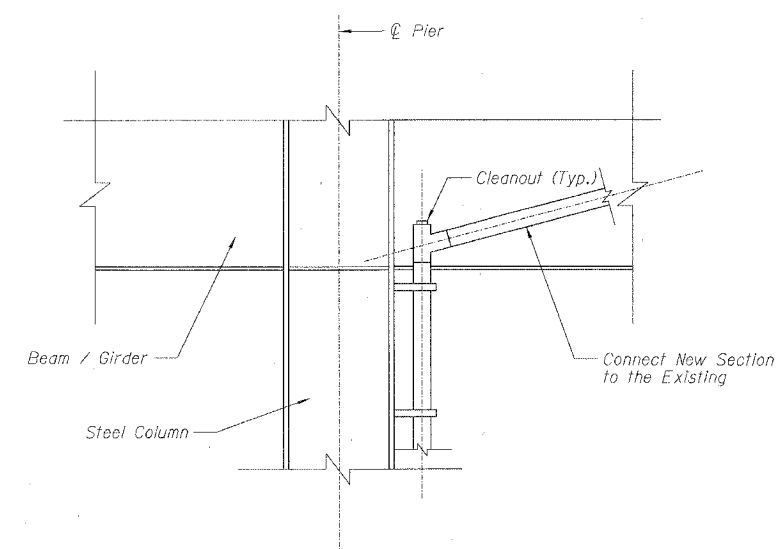
To Catch Basin

- Notes:
- The removal and in-kind replacement of areas of bituminous or concrete paving and necessary excavation required for the replacement of damaged pipes at ground level shall be included in "Bridge Drainage System Repairs".
 - An estimated quantity of 570 L.F. (57 - 10'-0" Segments) of temporary concrete barrier is provided. These barriers are required for the protection of the drain pipes from vehicles at locations under the structures used as parking lots or material storage areas (Locations shown in table).
 - The Contractor shall verify the exact locations where the temporary concrete barriers are required. Location of barrier shall be approved by the Engineer. Place barrier to ensure adequate access to clean-outs and catch basins. Barrier shall be F or New Jersey shape. The work and the material (furnishing and placing) will be paid at the contract unit price for "Furnishing Temporary Concrete Barrier". Quality of provided Temporary Concrete Barrier shall be measured based on 10-foot segments and approved by the Engineer, and the Engineer shall have the authority to reject barrier determined to not be in good condition.
 - See Drainage Repair Notes on sheet 111
 - The details provided on this sheet show a schematic representation of the Existing Drainage System. Contractor shall provide all elbows, tees, couplings and cleanouts necessary to complete the work.

TEMPORARY CONCRETE BARRIER LOCATIONS

Number required for downspout protection (10'-0" Segments)

STRUCTURE NUMBER	PIER	NUMBER REQUIRED	
016-0137	9	4	
016-1110	1	3	
016-1111	7	3	
	2	2	
	3	2	
	4	2	
	5	2	
	6	2	
	7	2	
	8	2	
016-1112	9	2	
	EB	1	
	12	1	
	13	3	
	14	2	
	15	1	
	B14	1	
016-1113	10	2	
	9	2	
	5	2	
	3	3	
	1	1	
	016-1117	8	2
		9	1
		10	2
		11	1
		12	1
		13	2
		24	2
		016-1067	A12
A7	1		
A5	1		
11	1		
10	1		
8	1		
7	1		
6	1		
Misc	6		
TOTAL		73	



BILL OF MATERIAL

ITEM DESCRIPTION	UNIT	QUANTITY
Temporary Concrete Barrier (To Remain Permanently)	FOOT	730

REVISIONS	
NAME	DATE

ILLINOIS DEPARTMENT OF TRANSPORTATION
 F.A.I. 94/90 (DAN RYAN EXPRESSWAY)
 DAN RYAN ELEVATED BRIDGE
 BEARING REPLACEMENT & STEEL REPAIR
 DRAINAGE REPAIRS
 DETAILS AND TYPICAL SECTIONS
 SCALE: NTS
 DATE: 3/7/2008
 DRAWN BY: LAM
 CHECKED BY: BLU

8/4/14/AM
 8/20/12/1/1