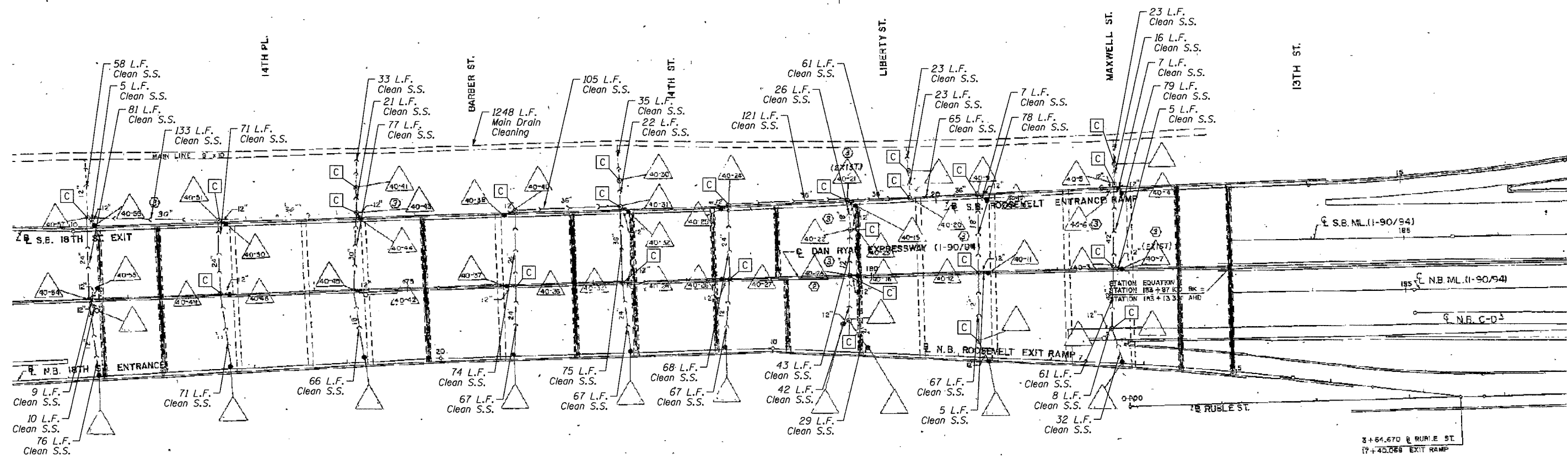


F.A.I.	SECTION	COUNTY	TOTAL SHEETS	SHEET NO.
84/90	2005-086 1	COOK	228	124
STA.		TO STA.		
FED. ROAD DIST. NO.		ILLINOIS	FED. AID PROJECT	
60B07				



BILL OF MATERIAL

ITEM DESCRIPTION	UNIT	QUANTITY	
		SN 016-0137	SN 016-1110
Drainage Structures to be Cleaned	EACH	24	1
Storm Sewers to be Cleaned	FOOT	1796	316
Video Taping of Main Drain	FOOT	1091	157
Main Drain Cleaning	FOOT	1091	157

LEGEND

- or ● = Existing Catch Basin
- ⊙ or ⊛ = Existing Manhole
- ←←← = Existing Storm Sewer
- = Drainage Structures to be Cleaned

NOTE:

Information from 1988-89 As-Builts to show probable location of existing drainage pipes and structures collecting bridge drainage. Field verify locations with Engineer. Clean all drainage pipes and structures downstream of catch basins cleaned under contracts 62580 and 62581 as shown in the plans and directed by the Engineer. Quantities estimated from As-builts.

REVISIONS	
NAME	DATE

ILLINOIS DEPARTMENT OF TRANSPORTATION
 F.A.I. 94/90 (DAN RYAN EXPRESSWAY)
 DAN RYAN ELEVATED BRIDGE
 BEARING REPLACEMENT & STEEL REPAIR
 EXISTING DRAINAGE SYSTEM
 DETAILS

SCALE: NTS
 DATE: 8/21/2007
 DRAWN BY: LAM
 CHECKED BY: BLU

BOWMAN, BARRETT & ASSOCIATES INC.
 CONSULTING ENGINEERS
 Chicago, Illinois
 312.228.0100
 www.bbainc.com

AN 660000 BRIDGE 21A SHEET 13660-21A.DS0307
 12/21/2007