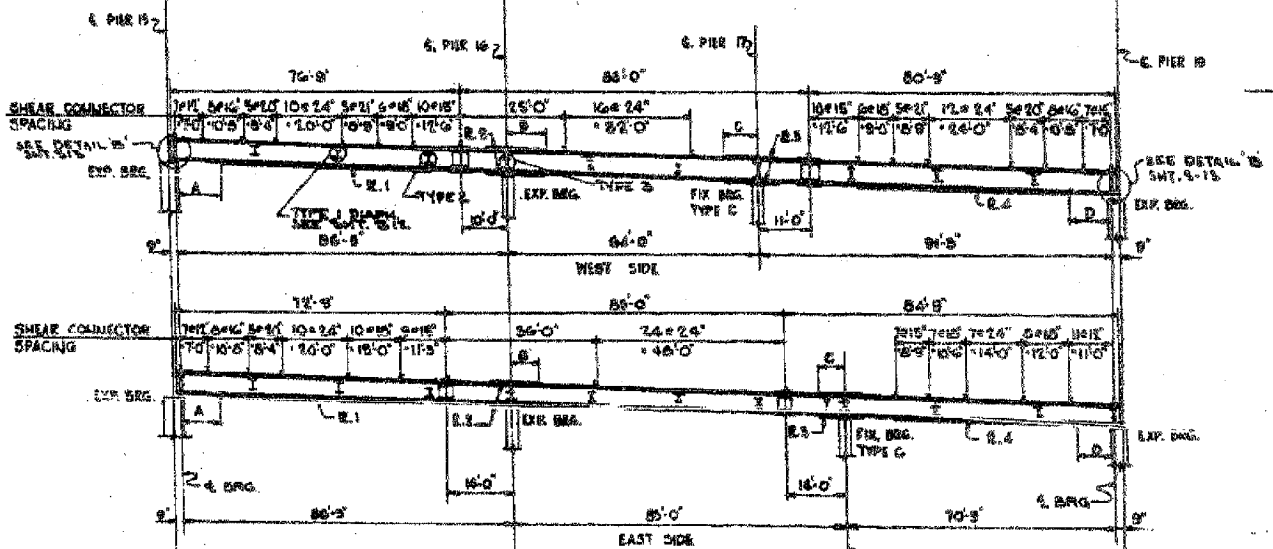
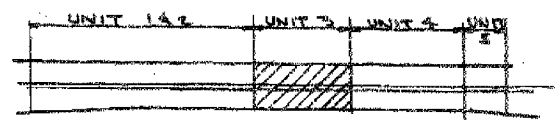


FRAMING PLAN
SCALE: 1"=20'-0"

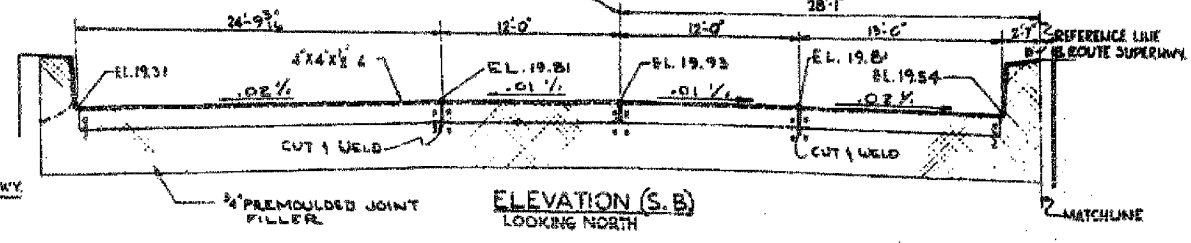


GIRDER ELEVATION
HOR. SCALE: 1"=20'-0"
VER. SCALE: 1"=10'-0"

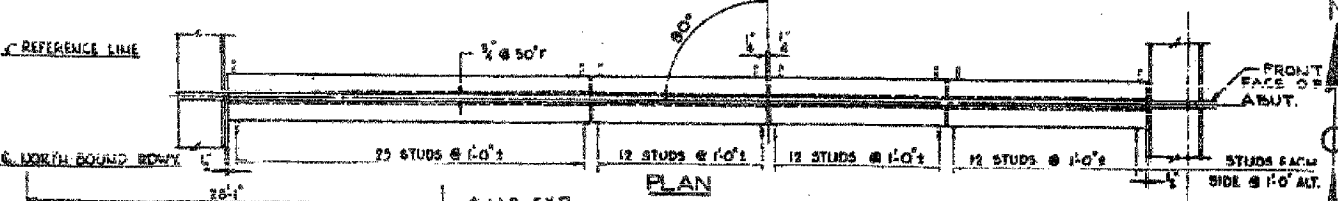


KEY PLAN

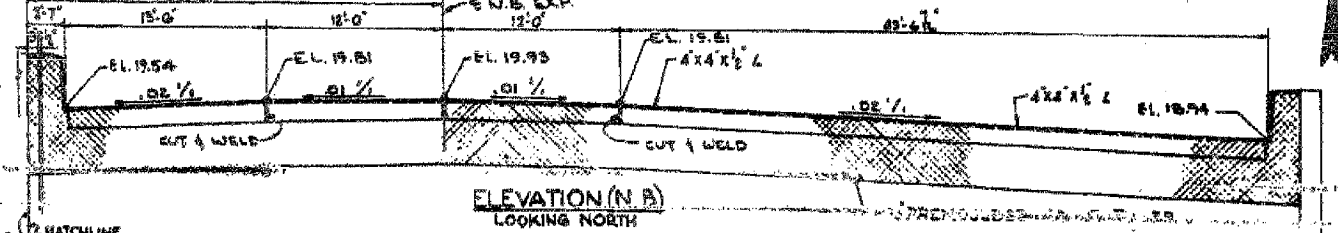
Designed By: J.S.
 Drawn By: P.R.T.
 Checked By: R.H.S.
 In Charge: N.S.WILF
 Approved By: L.N.RIAH



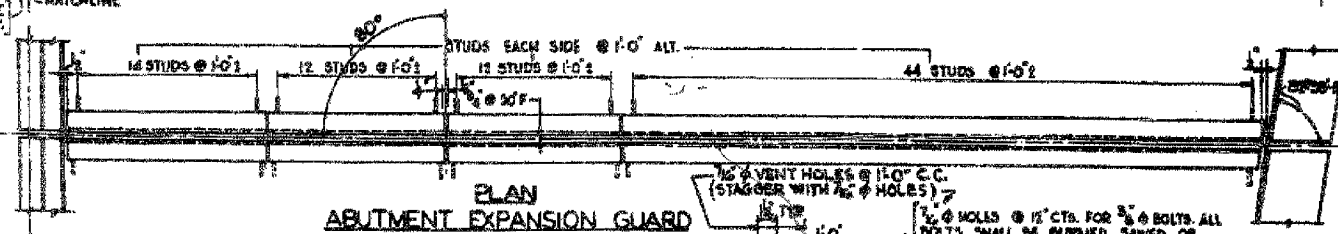
ELEVATION (S.B)
LOOKING NORTH



PLAN

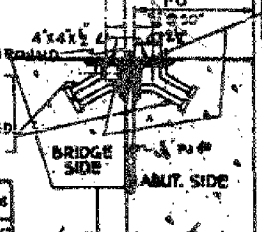


ELEVATION (N.B)
LOOKING NORTH



PLAN
ABUTMENT EXPANSION GUARD

SCALE: HOR. 1/2"=1'-0"
 VER. 1/4"=1'-0"
 1" SCALING, COMPOUND



JOINT DETAIL
SCALE: 1/2"=1'-0"

BILL OF MATERIAL			
ITEM	UNIT	A7	A87B
GIRDERS	POUND	590,800	88,120
DIAPHRAGMS	POUND	24,945	
ABUT. EXP. GUARD	POUND	5,885	

SPlice PLATES & BEARINGS BILLED ON SHEET S-15, FILL PLATES & BEARINGS ON S-16, INCLUDED IN WEIGHT ON SHT. S-12

GIRDER	COVER PLATE OFFSETS				COVER R. 1	2-PLATES COVER R. 2	2-PLATES COVER R. 3	COVER R. 4
	A	B	C	D				
43	8'-6"	8'-6"	11'-6"	8'-0"	10X1/2x16	10X1/2x16	10X1/2x16	10X1/2x16
44 TO 46	8'-6"	7'-6"	8'-6"	8'-0"	10X1/2x16	10X1/2x16	10X1/2x16	10X1/2x16
47	8'-6"	7'-6"	8'-6"	8'-0"	10X1/2x16	10X1/2x16	10X1/2x16	10X1/2x16
48 TO 51	8'-6"	7'-6"	8'-6"	8'-0"	10X1/2x16	10X1/2x16	10X1/2x16	10X1/2x16
52	8'-6"	8'-6"	11'-6"	8'-0"	10X1/2x16	10X1/2x16	10X1/2x16	10X1/2x16
53 TO 57	7'-6"	11'-0"	7'-6"	7'-6"	10X1/2x16	10X1/2x16	10X1/2x16	10X1/2x16
58 TO 61	7'-6"	11'-0"	7'-6"	7'-6"	10X1/2x16	10X1/2x16	10X1/2x16	10X1/2x16
62	7'-6"	8'-6"	8'-6"	7'-6"	15X1/2x20	15X1/2x20	10X1/2x16	10X1/2x16

*NOTE: ALL COVER PLATES OVER 1" THICK & ALL W/ BEAMS WITH COVER PLATES OVER 1" THICK ARE TO BE TYPE-A375 STRUCTURAL STEEL, ALL OTHERS TO BE TYPE-A7 STRUCTURAL STEEL.

CITY OF CHICAGO
 DEPARTMENT OF PUBLIC WORKS
 BUREAU OF ENGINEERING
SOUTH ROUTE SUPERHIGHWAY
 ELEVATED HIGHWAY
 W. 15 TH ST. TO W. MAXWELL ST.
 SECTION 8-888.3 - 11

STEEL FRAMING PLAN UNIT 3
ABUTMENT EXPANSION GUARD

DE LEW, GATHER & COMPANY
 CONSULTING ENGINEERS CHICAGO
 SCALE: AS NOTED SHEET S-14 OF 64 SHEETS

Sheet S14 of 64

REVISIONS	
NAME	DATE

ILLINOIS DEPARTMENT OF TRANSPORTATION
 F.A.I. 94/90 (DAN RYAN EXPRESSWAY)
 DAN RYAN ELEVATED BRIDGE
 BEARING REPLACEMENT & STEEL REPAIR
 EXISTING PLAN INFORMATION
 SN 016-0137

SCALE: NTS
 DATE: 5/18/2007
 DRAWN BY: LAM
 CHECKED BY: BLU

FOR INFORMATION ONLY