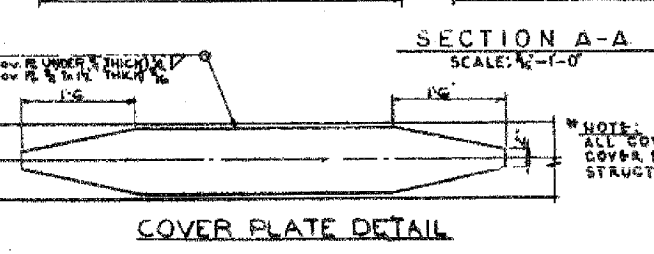
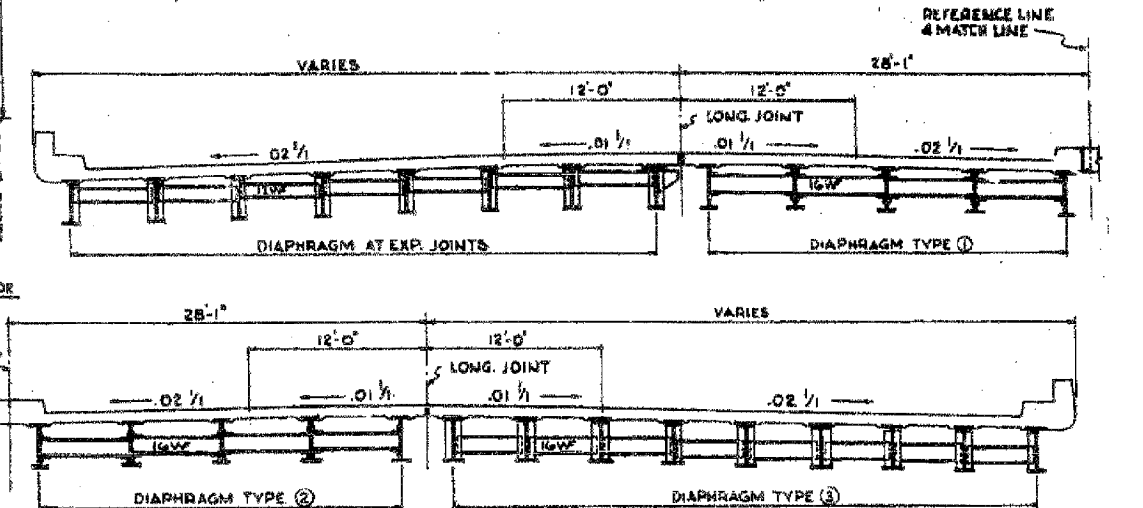
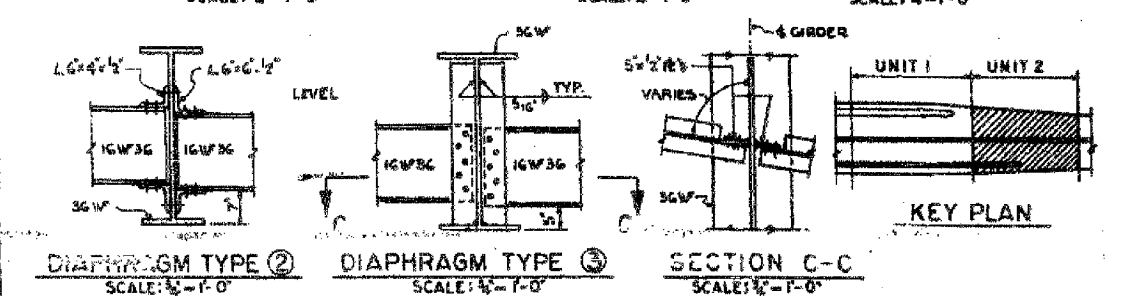
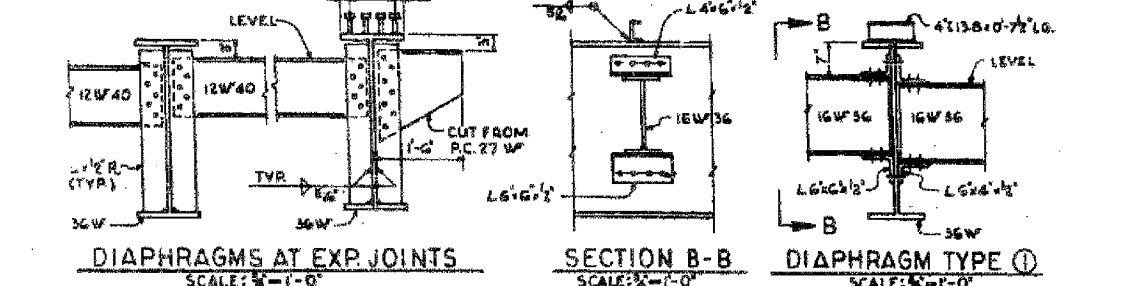


GIRDER	A	B	C	D	S1	S2	S3	F	G	R-1	2 PLATES R-2	R-3	2 PLATES R-4	R-5
41	67'-4"	45'-2"	66'-2"	67'-4"	66'-2"	114'-3"	88'-11"	11'-0"	12'-0"	10'-11/4"	15'-11/4"	10'-11/4"	15'-11/4"	10'-11/4"
42	66'-7"	45'-11/2"	66'-1"	67'-4"	66'-2"	114'-3"	88'-11"	12'-6"	14'-6"	10'-11/4"	15'-11/4"	10'-11/4"	15'-11/4"	10'-11/4"
43	66'-6"	45'-11"	66'-1"	67'-8"	66'-1"	114'-3"	88'-11"	DO	DO	DO	DO	DO	DO	DO
44	66'-6"	45'-0"	66'-0"	67'-2"	66'-0"	114'-3"	88'-11"	DO	DO	DO	DO	DO	DO	DO
45	66'-6"	45'-0"	66'-0"	67'-2"	66'-0"	114'-3"	88'-11"	DO	DO	DO	DO	DO	DO	DO
46	66'-5"	45'-0"	66'-0"	67'-2"	67'-11"	114'-3"	88'-11"	DO	DO	DO	DO	DO	DO	DO
47	66'-5"	45'-0"	67'-11"	67'-11"	67'-11"	113'-11"	88'-7"	DO	DO	DO	DO	DO	DO	DO
48	66'-5"	45'-0"	67'-11"	67'-11"	67'-11"	113'-11"	88'-7"	DO	DO	DO	DO	DO	DO	DO
49	66'-5"	45'-0"	67'-11"	67'-11"	67'-11"	113'-11"	88'-7"	DO	DO	DO	DO	DO	DO	DO
50	DO	DO	DO	DO	DO	DO	DO	DO	DO	DO	DO	DO	DO	DO
51	DO	DO	DO	DO	DO	DO	DO	DO	DO	DO	DO	DO	DO	DO
52	DO	DO	DO	DO	DO	DO	DO	DO	DO	DO	DO	DO	DO	DO
53	DO	DO	DO	DO	DO	DO	DO	DO	DO	DO	DO	DO	DO	DO
54	DO	DO	DO	DO	DO	DO	DO	DO	DO	DO	DO	DO	DO	DO
55	DO	DO	DO	DO	DO	DO	DO	DO	DO	DO	DO	DO	DO	DO
56	DO	DO	DO	DO	DO	DO	DO	DO	DO	DO	DO	DO	DO	DO
57	67'-1"	45'-0"	66'-0"	67'-2"	66'-0"	114'-3"	88'-11"	11'-0"	12'-0"	10'-11/4"	15'-11/4"	10'-11/4"	15'-11/4"	10'-11/4"

Designed By: R.N.V.
Drawn By: H.M.
Checked By: S.F.P.
In Charge: R.S.WILF
Approved By: L.H.RIAH

BOWMAN, BARRETT & ASSOCIATES INC.
CONSULTING ENGINEERS
Chicago, Illinois
312.228.0100
www.bbainc.com

NOTE: ALTERNATE SHEAR CONN. TO BE 3/8" x 4" CP 1020 STL GRANULAR OR SOLID FLUX FILLED STUDS AUTOMATICALLY END WELDED.



SUMMARY OF STRUCTURAL STEEL UNIT 2

ITEM	UNIT	QUANTITY	QUANTITY
		ASTM A 36	ASTM A 572
BEAMS	POUND	1,559,354	96,513
FILL PLATES & SPLICE PLATES	POUND	10,970	
DIAPHRAGMS	POUND	64,241	
STEEL BEARINGS	POUND	20,781	
		1,655,286	96,513

INCLUDED ON SUMMARY OF UNITS 1 & 2 ON SHEET 522. DECK EXPANSION DEVICE COMPLETE, IS FURNISHED IN CONTRACT 8-2525-14 COST OF INSTALLATION IN CONTRACT 5-2525-2N IS INCIDENTAL TO STRUCTURAL STEEL.

GENERAL NOTES

SEE SHEET 525 FOR BEARING DETAILS, SPLICE DETAILS, DEAD LOAD DEFLECTIONS AND CAMBER DIAGRAM. SEE SHEET 5-24. USE HIGH STRENGTH BOLTS FOR ALL DIAPHRAGM CONNECTIONS.

*NOTE: ALL COVER PLATES OVER 1" THICK & ALL W BEAMS WITH COVER PLATES OVER 1" THICK ARE TO BE TYPE A-7 STRUCTURAL STEEL, ALL OTHERS A-7.

CITY OF CHICAGO
DEPARTMENT OF PUBLIC WORKS
BUREAU OF ENGINEERING
SOUTH ROUTE SUPERHIGHWAY
ELEVATED HIGHWAY
W. 16 TH ST TO W. 15 TH ST.
SECTION 5-2525-2N

STEEL FRAMING PLAN
UNIT 2

DE LEW, CATCHER & COMPANY
CONSULTING ENGINEERS CHICAGO
SCALE: AS NOTED SHEET 522 OF 56 SHEETS

ILLINOIS DEPARTMENT OF TRANSPORTATION
F.A.I. 94/90 (DAN RYAN EXPRESSWAY)
DAN RYAN ELEVATED BRIDGE
BEARING REPLACEMENT & STEEL REPAIR
EXISTING PLAN INFORMATION
SN 016-1110

SCALE: NTS
DATE: 5/18/2007

DRAWN BY: LAM
CHECKED BY: BLU

FOR INFORMATION ONLY