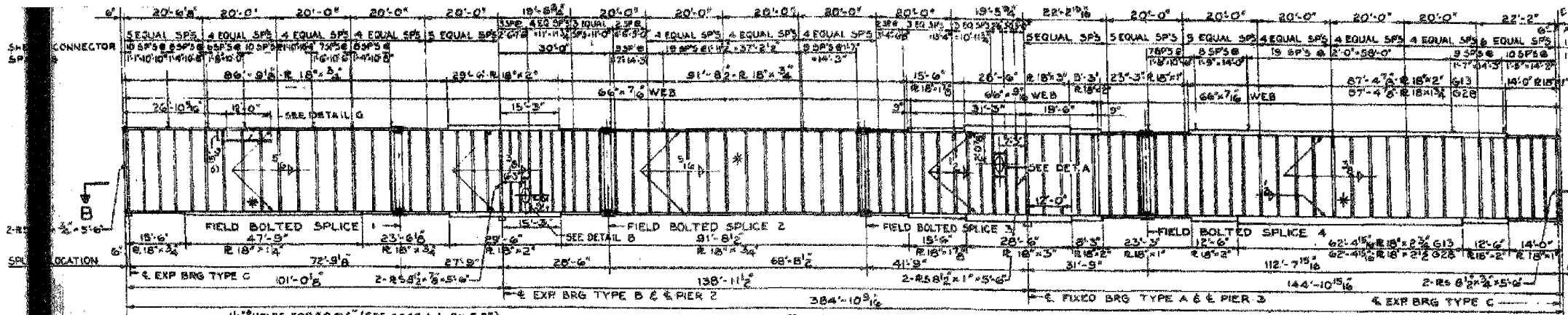
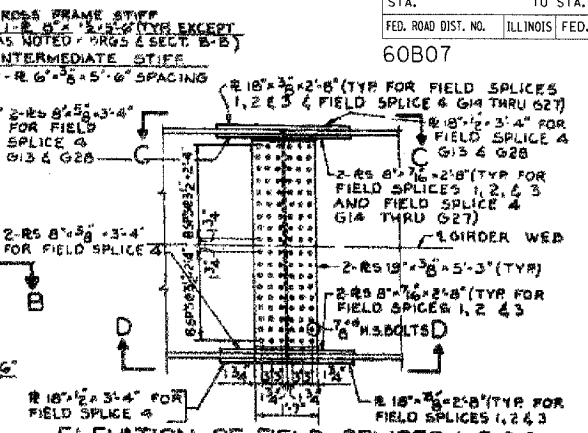


60B07



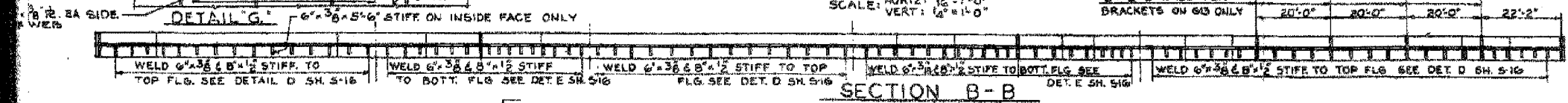
ELEVATION OF GIRDER G13
(GIRDER G28 SIMILAR EXCEPT AS NOTED)

SCALE: HORIZ: 1/8" = 1'-0"
VERT: 1/4" = 1'-0"

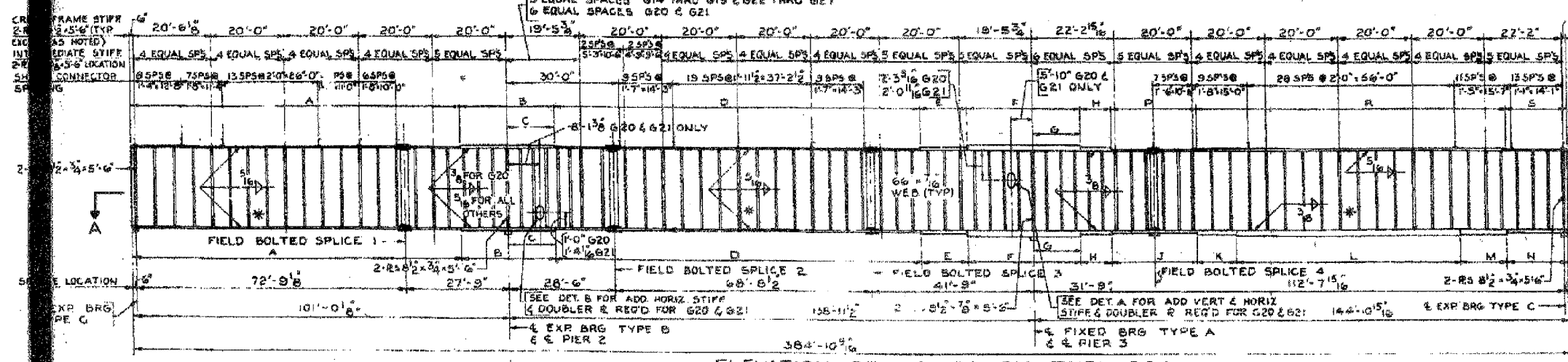


ELEVATION OF FIELD SPLICES 1, 2, 3 & 4
(SPLICE DETAILS APPLY TO ROWNY GIRDERS G13 THRU G28 ONLY)

SCALE: 1/2" = 1'-0"



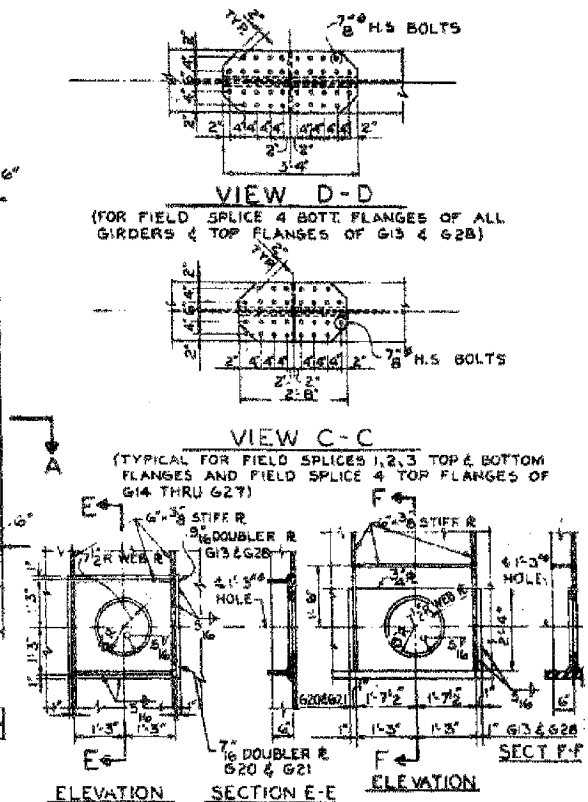
SECTION B-B



ELEVATION OF GIRDERS G14 THRU G27

SCALE: HORIZ: 1/8" = 1'-0"
VERT: 1/4" = 1'-0"

NOTE:
FOR GIRDERS G16, G17, G20, G21, G24 & G25
USE 1'-0" x 1/2" x 5'-6" STIFFENER R AT CROSSFRAME
CONNECTIONS AND 1'-0" x 3/8" x 5'-6" STIFFENER R
WHERE NO CROSSFRAME CONNECTIONS ARE MADE.



DETAIL A
(G13 & G21 AS SHOWN
G20 & G28 SIMILAR)
SCALE: 1/2" = 1'-0"

DETAIL B
(G13 & G21 AS SHOWN
G20 & G28 SIMILAR)
SCALE: 1/2" = 1'-0"

GIRDER	WELDED PLATE GIRDER SCHEDULE														
	A	B	C	D	E	F	G	H	J	K	L	M	N	P	S
G15, G26 & G27	18" x 3/4" x 89"	18" x 3/4" x 89"	11'-6"	18" x 3/4" x 104"	18" x 3/4" x 104"	18" x 3/4" x 104"	11'-0"	18" x 3/4" x 104"	18" x 3/4" x 104"	18" x 3/4" x 104"	18" x 3/4" x 104"	18" x 3/4" x 104"	18" x 3/4" x 104"	18" x 3/4" x 104"	18" x 3/4" x 104"
G17, G18 & G19	18" x 3/4" x 80"	18" x 3/4" x 80"	10'-6"	18" x 3/4" x 103"	18" x 3/4" x 103"	18" x 3/4" x 103"	10'-9"	18" x 3/4" x 103"	18" x 3/4" x 103"	18" x 3/4" x 103"	18" x 3/4" x 103"	18" x 3/4" x 103"	18" x 3/4" x 103"	18" x 3/4" x 103"	18" x 3/4" x 103"
G22, G23, G24 & G25	18" x 3/4" x 87"	18" x 3/4" x 87"	13'-6"	18" x 3/4" x 96"	18" x 3/4" x 96"	18" x 3/4" x 96"	12'-9"	18" x 3/4" x 96"	18" x 3/4" x 96"	18" x 3/4" x 96"	18" x 3/4" x 96"	18" x 3/4" x 96"	18" x 3/4" x 96"	18" x 3/4" x 96"	18" x 3/4" x 96"

CITY OF CHICAGO
DEPARTMENT OF PUBLIC WORKS
BUREAU OF ENGINEERING
SOUTH ROUTE SUPERHIGHWAY
ELEVATED HIGHWAY
W 16TH ST TO W 15TH ST.

Sheet S12 of 56

REVISIONS	
NAME	DATE

ILLINOIS DEPARTMENT OF TRANSPORTATION
F.A.I. 94/90 (DAN RYAN EXPRESSWAY)
DAN RYAN ELEVATED BRIDGE
BEARING REPLACEMENT & STEEL REPAIR
EXISTING PLAN INFORMATION
SN 016-1110

SCALE: NTS
DATE: 5/18/2007

DRAWN BY: LAM
CHECKED BY: BLU

BOWMAN, BARRETT & ASSOCIATES INC.
CONSULTING ENGINEERS
Chicago, Illinois
312.228.0100
www.bbancinc.com

FOR INFORMATION ONLY

5/24/2007 5:50:06 PM