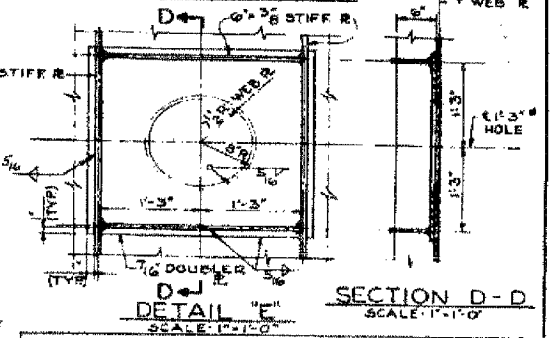
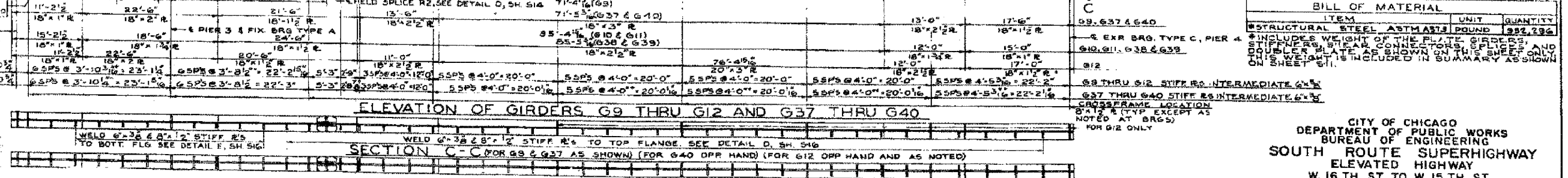
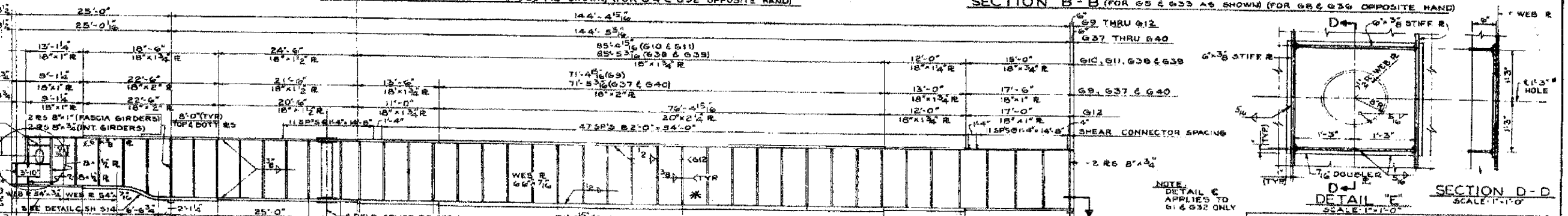
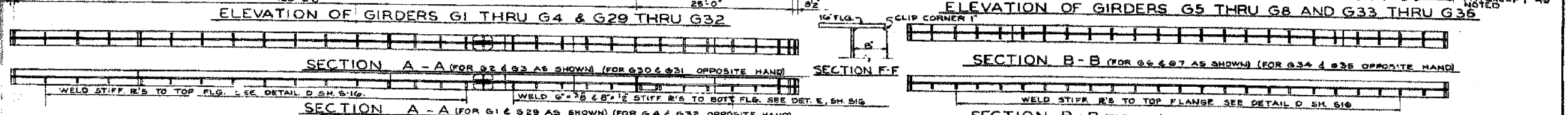
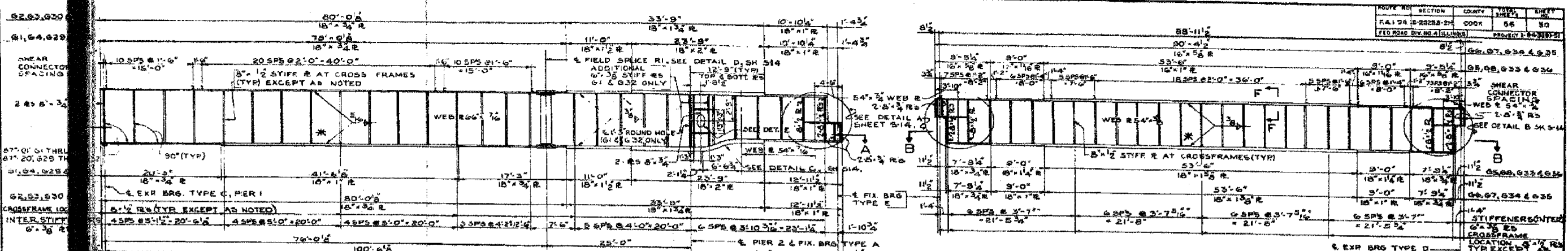


ROUTE NO.	SECTION	COUNTY	TOTAL SHEETS	SHEET NO.
F.A.I. 94-2005-086 I	COOK	66	228	142
FED. ROAD DIV. NO. 4 ILLINOIS		PROJECT E-633(8)97		



BILL OF MATERIAL		
ITEM	UNIT	QUANTITY
STRUCTURAL STEEL ASTM A36	POUND	982,296
* INCLUDES WEIGHT OF THE PLATE, GIRDERS, STIFFENERS, SHEAR CONNECTORS, SPLICES AND DOUBLER PLATE AS SHOWN ON THIS SHEET ONLY. THIS WEIGHT IS INCLUDED IN SUMMARY AS SHOWN ON SHEET S11.		

CITY OF CHICAGO
 DEPARTMENT OF PUBLIC WORKS
 BUREAU OF ENGINEERING
 SOUTH ROUTE SUPERHIGHWAY
 ELEVATED HIGHWAY
 W. 16TH ST TO W. 15TH ST
 SECTION 3-2525.3-24
 RAMP GIRDER DETAILS
 G1 THRU G12 & G29 THRU G40

NOTES:
 SEE SHEET S-16 FOR WELDING, LATERAL BRACING, AND SHEAR CONNECTOR DETAILS

Designer: P.J.V.
 Drawn: O.M.
 Checked: E.L.

BOWMAN, BARRETT & ASSOCIATES INC.
 CONSULTING ENGINEERS
 Chicago, Illinois
 312.228.0100
 www.bbainc.com

FOR INFORMATION ONLY

REVISIONS		ILLINOIS DEPARTMENT OF TRANSPORTATION F.A.I. 94/90 (DAN RYAN EXPRESSWAY) DAN RYAN ELEVATED BRIDGE BEARING REPLACEMENT & STEEL REPAIR EXISTING PLAN INFORMATION SN 016-1110
NAME	DATE	
		SCALE: NTS DATE: 5/18/2007
		DRAWN BY: LAM CHECKED BY: BLU

11/20/05 09:00 AM C:\BRIDGE\214\ASHEETS\60B07.ZIA.DWG (10) E-PROG07