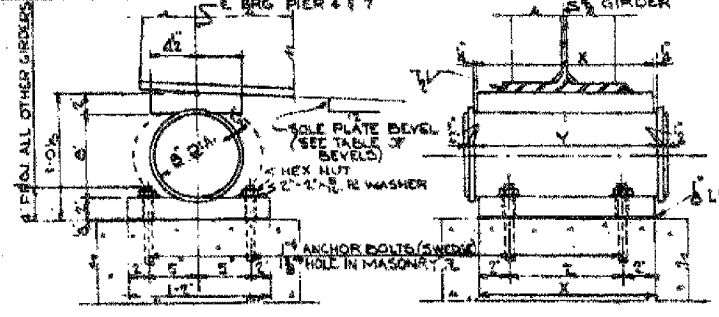
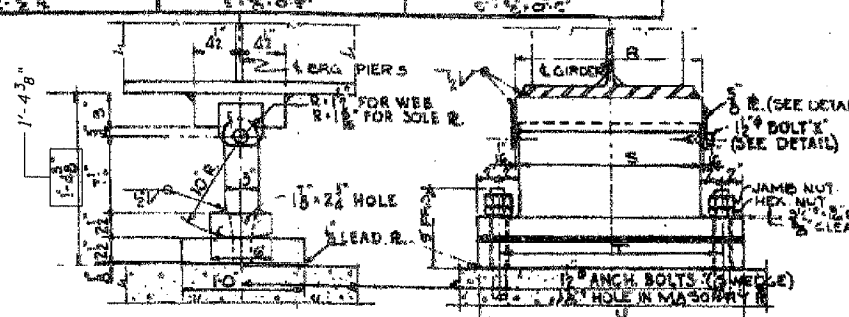


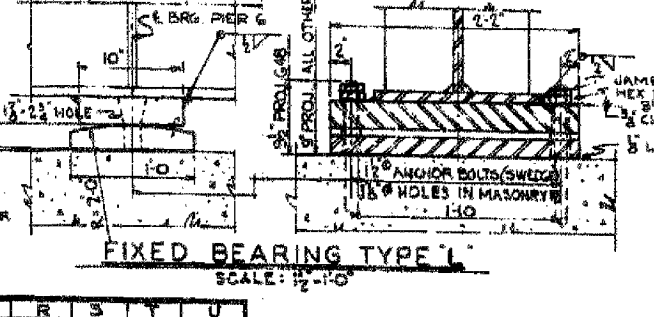
MATERIAL	TYPE F (6 REQ'D)	TYPE G (4 REQ'D)	TYPE H (7 REQ'D)	MATERIAL	TYPE J (3 REQ'D)	TYPE K (24 REQ'D)	MATERIAL	TYPE L (27 REQ'D)
SOLE PLATE MASONRY R LEAD R ANCHOR BOLTS WASHERS BOLTS	5" x 2 1/2" x 1/2" 14" x 1 1/2" x 1/2" 14" x 1 1/2" x 1/2" 2" x 2" x 1/2" 2" x 2" x 1/2" 2" x 2" x 1/2"	3" x 2 1/2" x 1/2" 14" x 1 1/2" x 1/2" 14" x 1 1/2" x 1/2" 2" x 2" x 1/2" 2" x 2" x 1/2" 2" x 2" x 1/2"	5" x 2 1/2" x 1/2" 14" x 1 1/2" x 1/2" 14" x 1 1/2" x 1/2" 2" x 2" x 1/2" 2" x 2" x 1/2" 2" x 2" x 1/2"	SOLE PLATE MASONRY R ROCKER R LEAD R ANCHOR BOLTS WASHERS BOLTS	9" x 3" x 1/2" 12" x 3" x 1/2" 12" x 3" x 1/2" 2" x 2" x 1/2" 2" x 2" x 1/2" 2" x 2" x 1/2"	9" x 3" x 1/2" 12" x 3" x 1/2" 12" x 3" x 1/2" 2" x 2" x 1/2" 2" x 2" x 1/2" 2" x 2" x 1/2"	SOLE PLATE MASONRY R LEAD R ANCHOR BOLTS WASHERS	10" x 2 1/2" x 1/2" 12" x 2 1/2" x 1/2" 12" x 2 1/2" x 1/2" 2" x 2" x 1/2" 2" x 2" x 1/2" 2" x 2" x 1/2"



EXPANSION BEARING - TYPE F, G & H
SCALE: 1/2" = 1'-0"



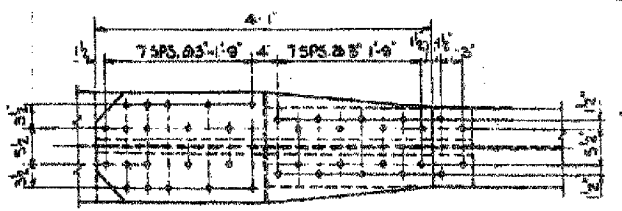
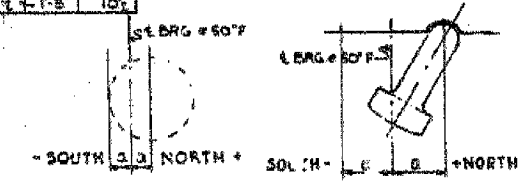
EXPANSION BEARING TYPE J & K
SCALE: 1/2" = 1'-0"



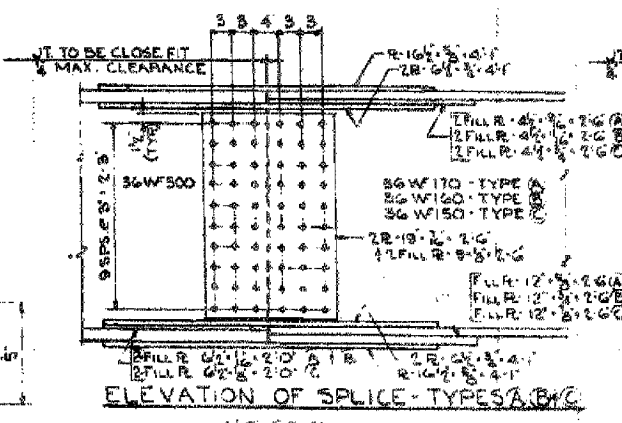
FIXED BEARING TYPE L
SCALE: 1/2" = 1'-0"

	R	S	T	U
TYPE J	140 1/2	1' 10"	2' 2"	2' 6"
TYPE K	1' 0 1/2	1' 6"	1' 10"	2' 2"

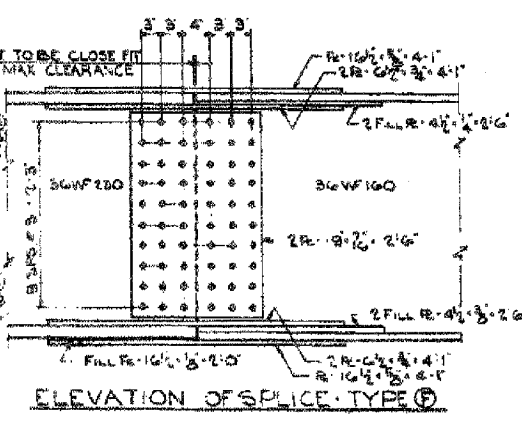
	Y	Z
TYPE F	1' 9"	1' 6"
TYPE G	1' 6"	1' 1 1/2"
TYPE H	1' 1 1/2"	1' 0"



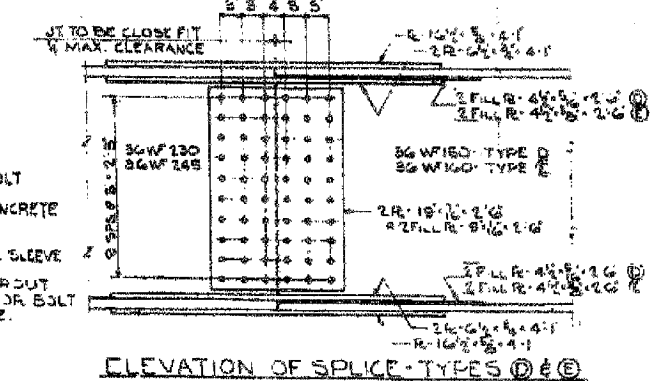
TOP VIEW OF SPLICE - TYPICAL



ELEVATION OF SPLICE - TYPES A, B & C



ELEVATION OF SPLICE - TYPE D



ELEVATION OF SPLICE - TYPES E & F

TABLE OF FILL PLATES (AT BEARINGS)

LOCATION	GIRDER NUMBER				
	41	48	50	55	67
PIER NO. 4	---	---	14" x 2 1/2" x 1/2"	14" x 2 1/2" x 1/2"	14" x 2 1/2" x 1/2"
PIER NO. 6	---	12" x 2 1/2" x 1/2"	---	---	---
PIER NO. 7	14" x 2 1/2" x 1/2"	14" x 2 1/2" x 1/2"	---	---	14" x 2 1/2" x 1/2"

TOTAL WEIGHT OF FILL PLATES = 234 LBS.

TABLE OF BEVELS

LOCATION	GIRDER NUMBER				
	41	42 to 58	64	55 to 66	67
PIER NO. 4	1'	3'	5'	5'	5'
PIER NO. 7	0	5'	5'	5'	1'

SCHEDULE OF BEARINGS

BEARING TYPE	NUMBER REQUIRED	WT. OF STEEL PER BEARING, LBS.	TOTAL STEEL LBS.
F	6	648	3,888
G	41	560	22,960
H	7	475	3,325
J	3	790	2,370
K	24	676	16,224
L	27	465	12,555

LESS ANCHOR BOLTS AT PIER 7 = - 540 LBS

TOTAL WEIGHT OF BEARINGS = 60,782 LBS

NOTE:
MATERIAL INCLUDED IN WEIGHT ON SHT. 52Z
ROCKER R AND WEB R FOR EXPANSION BRG TYPES J, K CAN BE
GRADE 60-35 CARBON STEEL CASTING.
FLANGE SPLICES --- 3/8" HIGH STRENGTH BOLTS.
WEB SPLICES --- 5/8" HIGH STRENGTH BOLTS.
ANCHOR BOLTS AT PIER 7 PROVIDED IN CONTRACT 52225-B-1-H.

CITY OF CHICAGO
DEPARTMENT OF PUBLIC WORKS
BUREAU OF ENGINEERING
SOUTH ROUTE SUPERHIGHWAY
ELEVATED HIGHWAY
W. 16 TH ST. TO W. 15 TH ST.
SECTION 3-2025-3-2H
BEARINGS & SPLICE DETAILS
UNIT 2

SCHEDULE OF SPLICES

SPLICE TYPE	NUMBER REQUIRED	WT. OF STEEL PER SPLICE, LBS.	TOTAL STEEL LBS.
A	2	997	1,994
B	3	1,020	3,060
C	3	1,043	3,129
D	83	922	76,526
E	4	931	3,724
F	13	926	12,038

TOTAL WEIGHT OF SPLICES = 100,471 LBS.

SCALES OF TRACING

FOR INFORMATION ONLY

Des. By N.S.W.
Dwn. By W.G.K.
Chk. By R.S.
In. By N.S.W./L.F.
App. By L.N.RIAN

ANCHOR BOLT SETTING

BOWMAN, BARRETT & ASSOCIATES INC.
CONSULTING ENGINEERS
Chicago, Illinois
312.228.0100
www.bbainc.com

SHEET S23 OF 56

REVISIONS	
NAME	DATE

ILLINOIS DEPARTMENT OF TRANSPORTATION
F.A.I. 94/90 (DAN RYAN EXPRESSWAY)
DAN RYAN ELEVATED BRIDGE
BEARING REPLACEMENT & STEEL REPAIR
EXISTING PLAN INFORMATION
SN 016-1110

SCALE: NTS
DATE: 5/18/2007
DRAWN BY: LAM
CHECKED BY: BLU