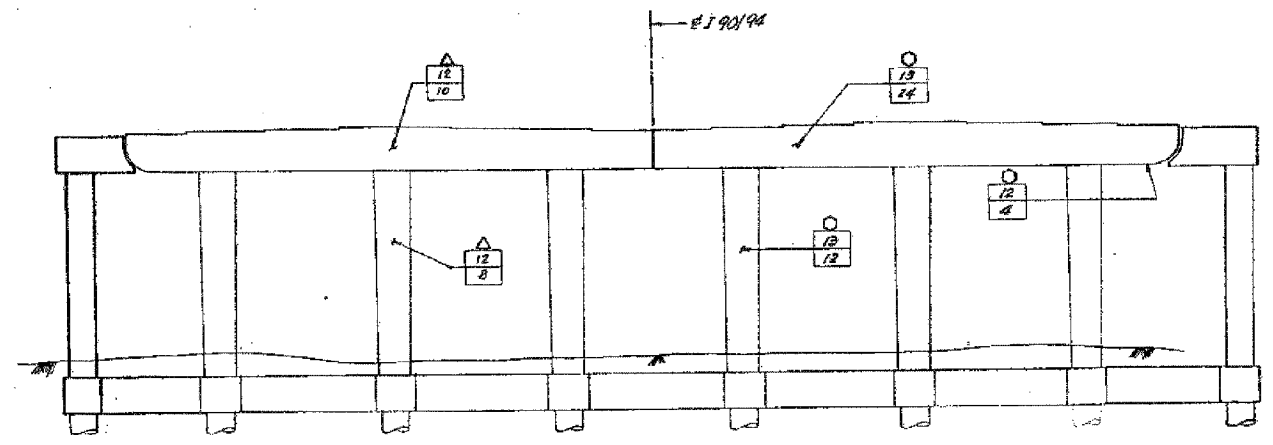


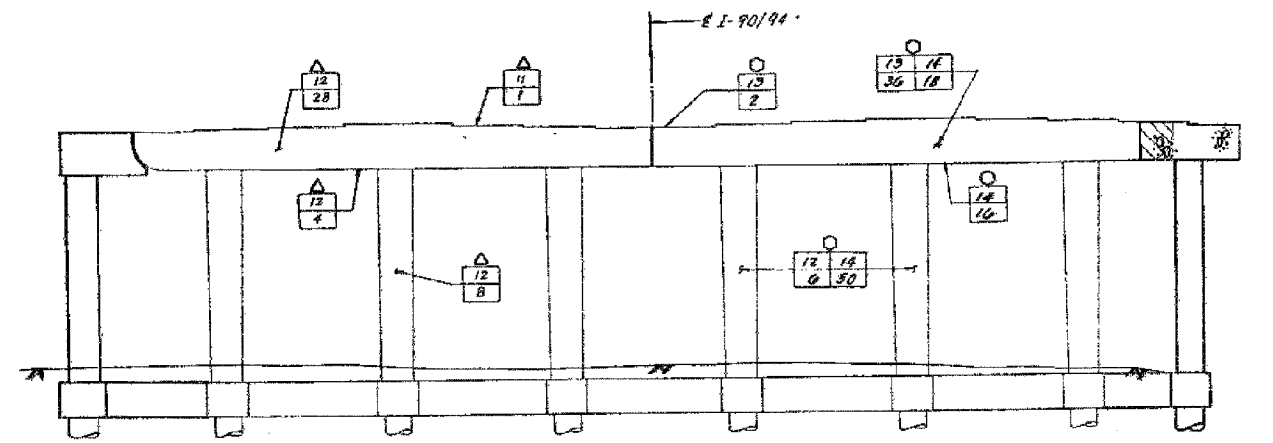
F.A.I.	SECTION	COUNTY	TOTAL SHEETS	SHEET NO.
94/90	2005-086 I	COOK	228	152
STA.	TO STA.			
FED. ROAD DIST. NO.	ILLINOIS	FED. AID PROJECT		

60B07

FEDERAL AID DIST. NO.	SECTION	COUNTY	TOTAL SHEETS	SHEET NO.
94/90	I	COOK	228	152
STA.	TO STA.			
FED. ROAD DIST. NO.	ILLINOIS	FED. AID PROJECT		



PIER 3
(Looking North)



PIER 4
(Looking North)

- LEGEND**
- INITIAL CONSTRUCTION**
 - EXISTING PIER
 - ADVANCE WORK**
 - SUBSTRUCTURE WIDENING
 - SUBSTRUCTURE REMOVAL
 - S.B. MAINLINE RECONSTRUCTION**
 - PIER REMOVAL
 - PIER REPLACEMENT
 - PIER REHABILITATION (SEE NOTE "A")
 - N.B. MAINLINE RECONSTRUCTION**
 - PIER REMOVAL
 - PIER REPLACEMENT
 - PIER REHABILITATION (SEE NOTE "A")

NOTE "A"

- INDICATES TYPE OF REPAIR (FOR DETAILS SEE SHY. PR 1)
- INDICATES AREA OF DISTRESS (EXPRESSED IN SQ. FT. OR LIN. FT.)

SHEET C 33 OF C 38

STATE OF ILLINOIS
DEPARTMENT OF TRANSPORTATION
F.A.I. ROUTE 94/90 (DAN RYAN EXPRESSWAY)
SECTION 1985-082 W - COOK COUNTY
S.B. MAINLINE RECONSTRUCTION
SUBSTRUCTURE WIDENING, REHABILITATION & REPLACEMENT
STRUCTURE 016-111 (MAINLINE)
PERS 3 & 4
Scale: NONE
Date: AUGUST, 1987
Drawn By: SAF
Checked By: RJ
ENVIRONMENTAL ENGINEERS INC.
Chicago, Illinois

REVISIONS	
Name	Date

FOR INFORMATION ONLY

BOWMAN, BARRETT & ASSOCIATES INC.
CONSULTING ENGINEERS
Chicago, Illinois
312.228.0100
www.bbainc.com

ILLINOIS DEPARTMENT OF TRANSPORTATION
F.A.I. 94/90 (DAN RYAN EXPRESSWAY)
DAN RYAN ELEVATED BRIDGE
BEARING REPLACEMENT & STEEL REPAIR
EXISTING PLAN INFORMATION
SN 016-1111
SCALE: NTS
DATE: 5/18/2007
DRAWN BY: LAM
CHECKED BY: BLU

M:\6000\BRIDGE\PIERS\PIER 3\60B07.DWG 5/18/2007 5:45:27 PM