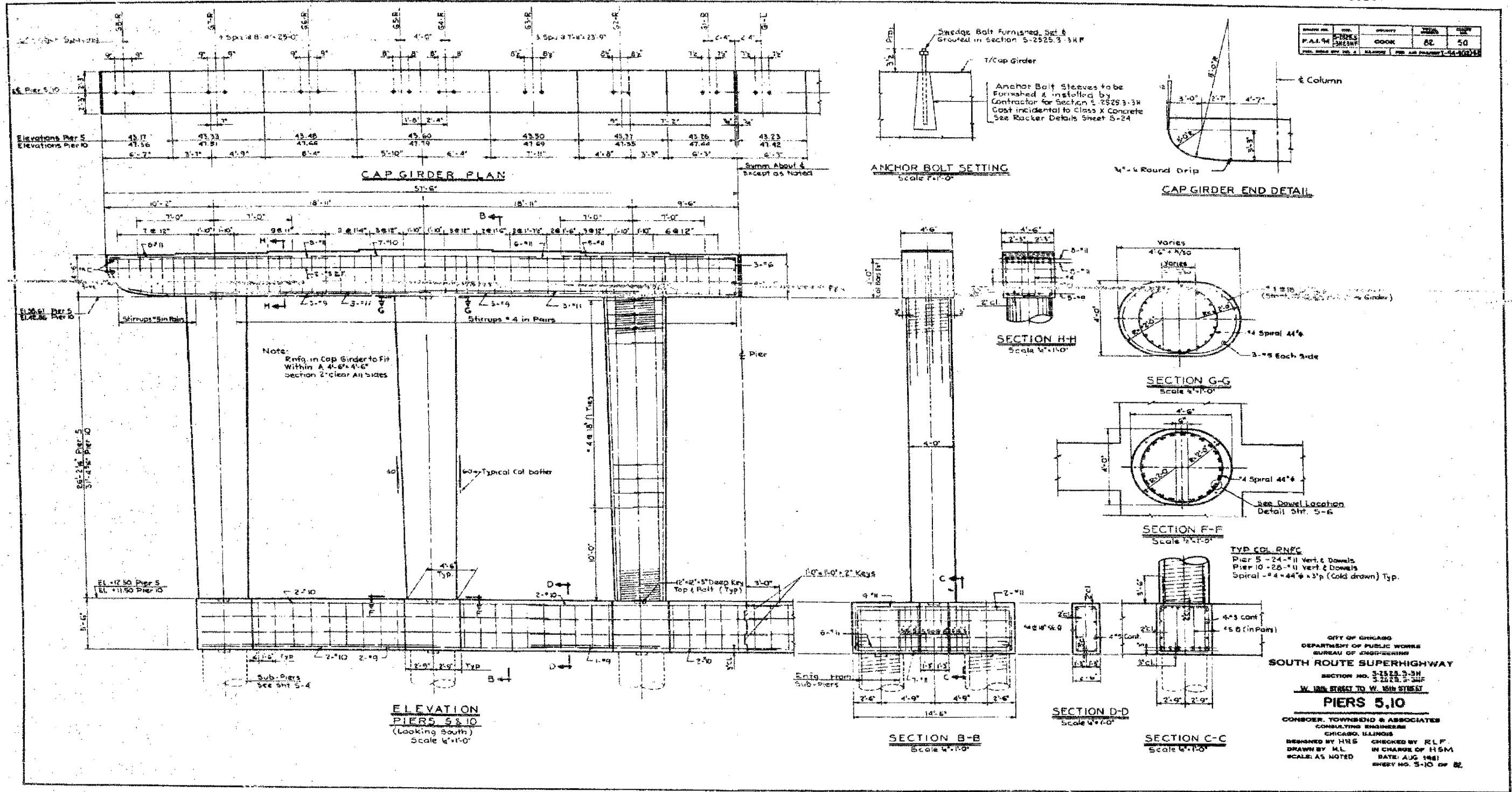


F.A.I.	SECTION	COUNTY	TOTAL SHEETS	SHEET NO.
94/90	2005-086 I	COOK	228	160
STA.		TO STA.		
FED. ROAD DIST. NO.		ILLINOIS FED. AID PROJECT		
60B07				

DESIGNED BY	CHECKED BY	DATE
P.A.L. 94	COOK	82 50



CITY OF CHICAGO
DEPARTMENT OF PUBLIC WORKS
BUREAU OF ENGINEERING
SOUTH ROUTE SUPERHIGHWAY
SECTION NO. 3-1525.3-3H
3-1525.3-3HF
W. 148th STREET TO W. 154th STREET
PIERS 5, 10
CONS. BY TOWNSEND & ASSOCIATES
CONSULTING ENGINEERS
CHICAGO, ILLINOIS
DESIGNED BY HRS
DRAWN BY M.L.
SCALE AS NOTED
CHECKED BY R.L.F.
IN CHARGE OF H.S.M.
DATE: AUG 1981
SHEET NO. 5-10 OF 82

FOR INFORMATION ONLY

REVISIONS	
NAME	DATE

ILLINOIS DEPARTMENT OF TRANSPORTATION
F.A.I. 94/90 (DAN RYAN EXPRESSWAY)
DAN RYAN ELEVATED BRIDGE
BEARING REPLACEMENT & STEEL REPAIR
EXISTING PLAN INFORMATION
SN 016-1111
SCALE: NTS
DATE: 5/18/2007
DRAWN BY: LAM
CHECKED BY: BLU

BOWMAN, BARRETT & ASSOCIATES INC.
CONSULTING ENGINEERS
Chicago, Illinois
312.228.0100
www.bbainc.com

5/24/2007 5:54:43 PM