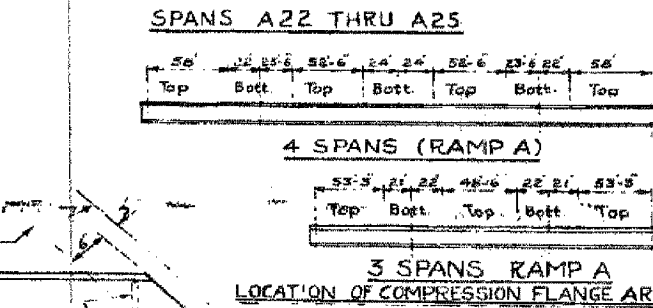
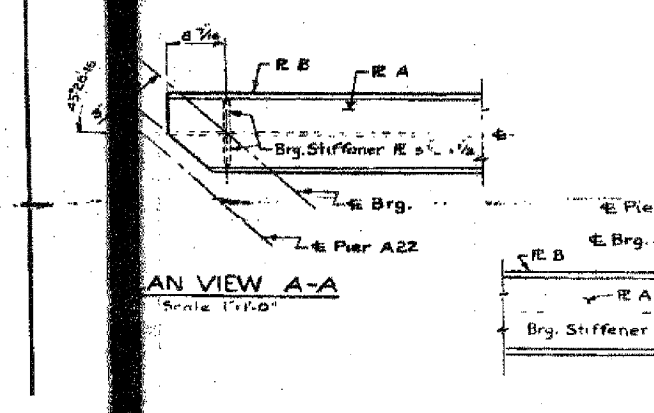
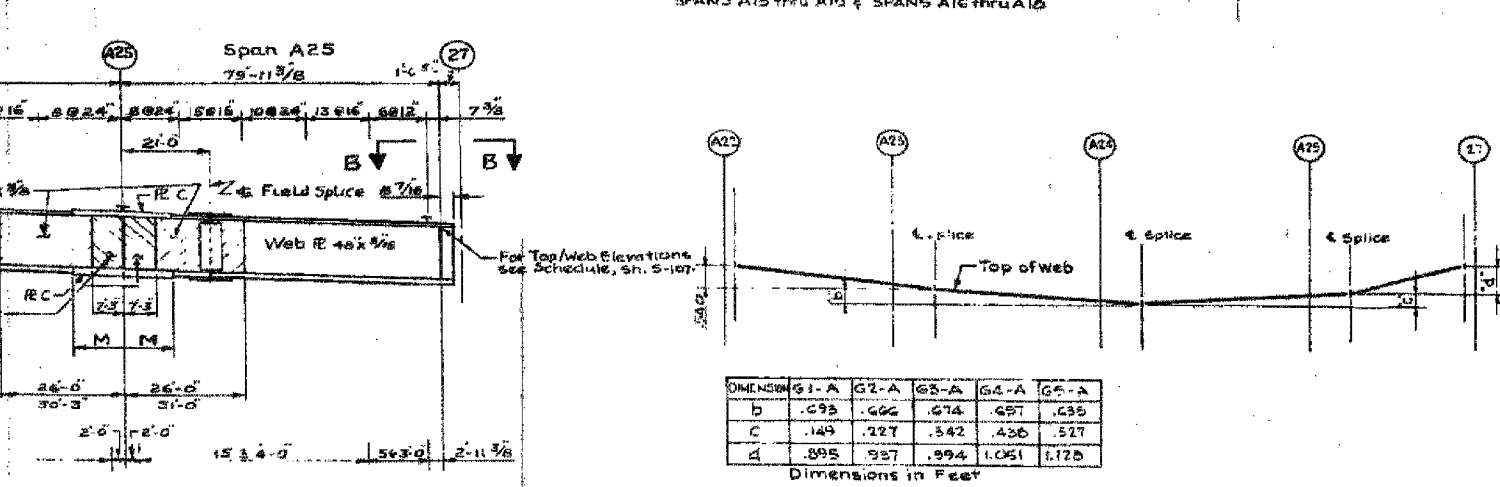
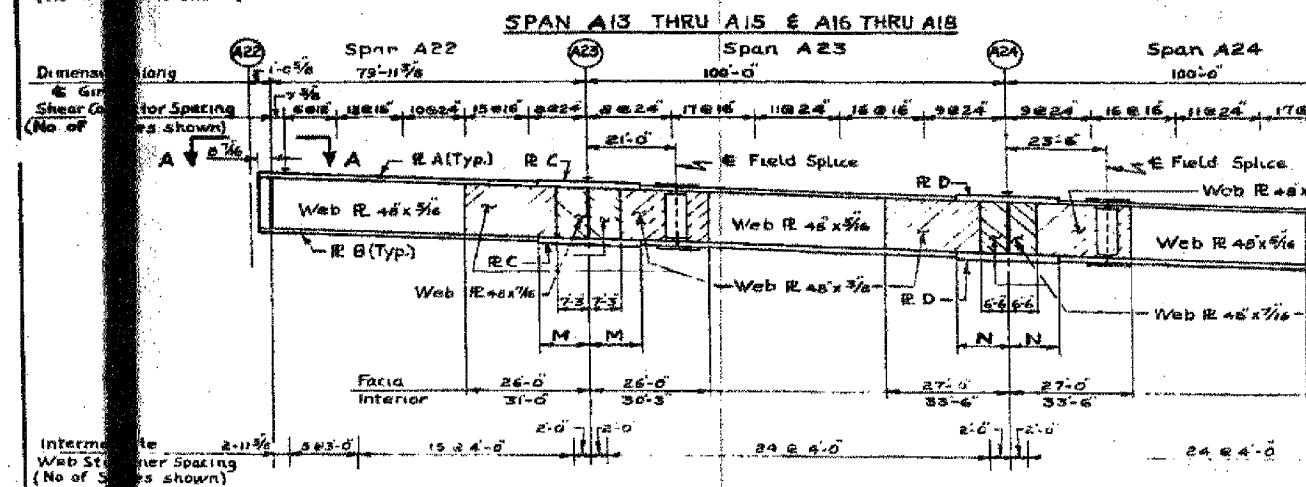
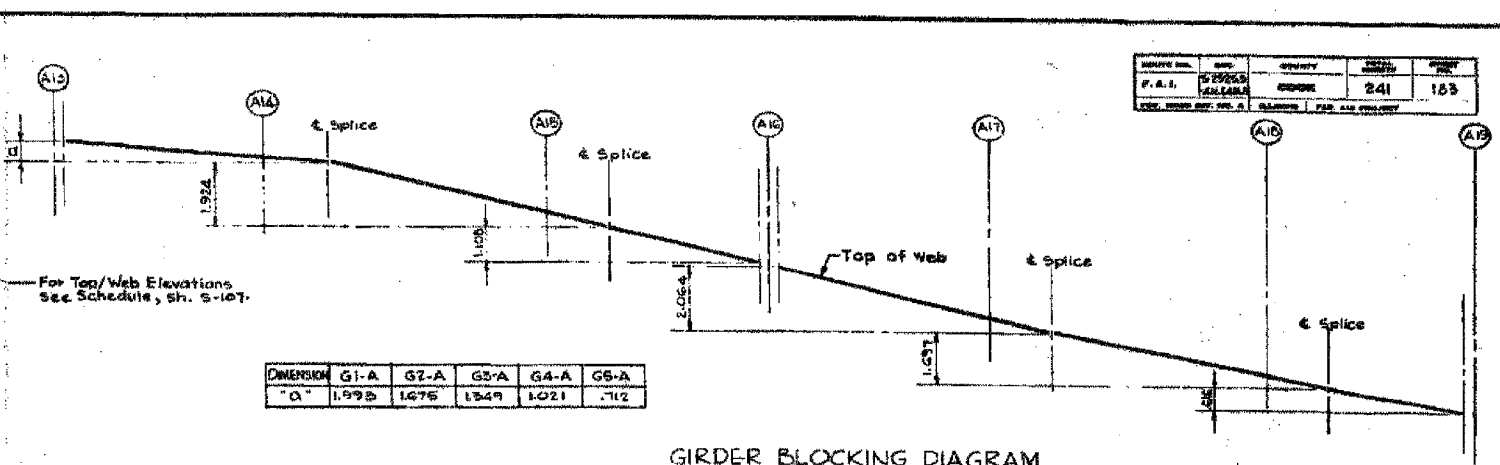
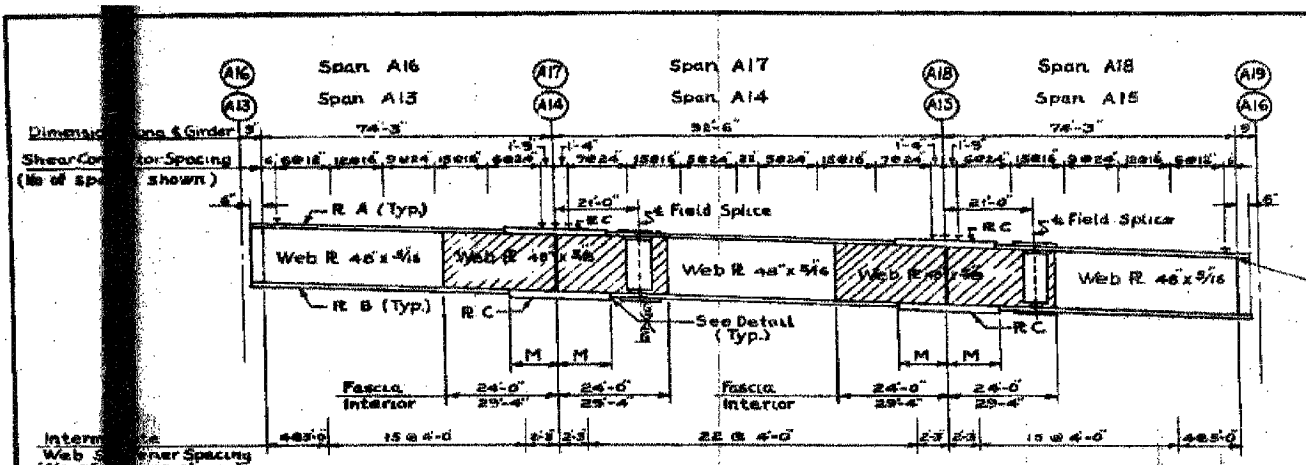


F.A.I.	SECTION	COUNTY	TOTAL SHEETS	SHEET NO.
94/90	2005-086 I	COOK	228	172
STA.	TO STA.			
FED. ROAD DIST. NO.	ILLINOIS	FED. AID PROJECT		
60B07				

REVISED BY	DATE	REASON
F.A.I.	5/18/07	ISSUE
DATE	241	183



UNIT	GIRDER	PLATE		PLATE C		PLATE D	
		A	B	SIZE	M	SIZE	N
SPANS A13	G1-A, G5-A	12x3/4	12x1"	10x1 1/2	11'-9"		
THRU A18	G2-A, G3-A, G4-A	12x3/4	12x1"	16x1 1/2	11'-0"		
SPANS A22	G1-A, G5-A	12x3/4	4x1"	18x1 1/2	13'-5"	15x1 1/2	14'-3"

CITY OF CHICAGO
 DEPARTMENT OF PUBLIC WORKS
 BUREAU OF ENGINEERING
SOUTH ROUTE SUPERHIGHWAY
 SECTION NO. S-2525.3-4 H,
 SECTION NO. S-2525.3-4 H, F
 W. CERMAK RD. TO W. 15TH STREET
CONTINUOUS GIRDER DETAILS
 CONROER, TOWNSEND & ASSOCIATES
 CONSULTING ENGINEERS

FOR INFORMATION ONLY

REVISIONS	
NAME	DATE

ILLINOIS DEPARTMENT OF TRANSPORTATION
 F.A.I. 94/90 (DAN RYAN EXPRESSWAY)
 DAN RYAN ELEVATED BRIDGE
 BEARING REPLACEMENT & STEEL REPAIR
 EXISTING PLAN INFORMATION
 SN 016-1112
 SCALE: NTS
 DATE: 5/18/2007
 DRAWN BY: LAM
 CHECKED BY: BLU

BOWMAN, BARRETT & ASSOCIATES INC.
 CONSULTING ENGINEERS
 Chicago, Illinois
 312.228.0100
 www.bbainc.com